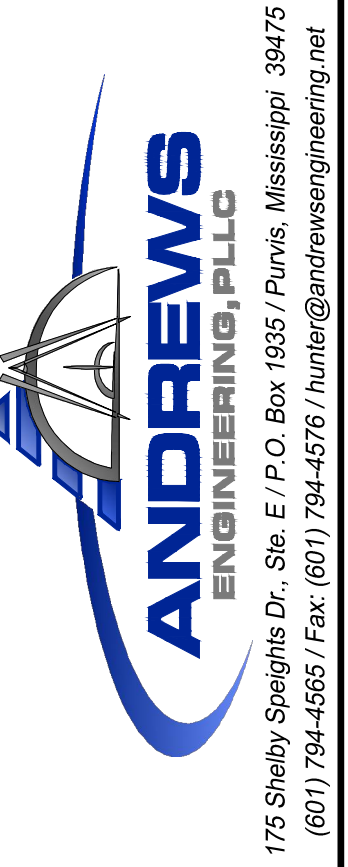


BEARINGS ORIENTED BY:
GPS (GEODETIC NORTH)
DRAWING SCALE: 1" = 20'
CLASS OF SURVEY: B
SURVEYED BY: WHA
DRAWN BY: WHA



PREPARED BY:

GORNAK PROPERTIES, LLC

PREPARED FOR:

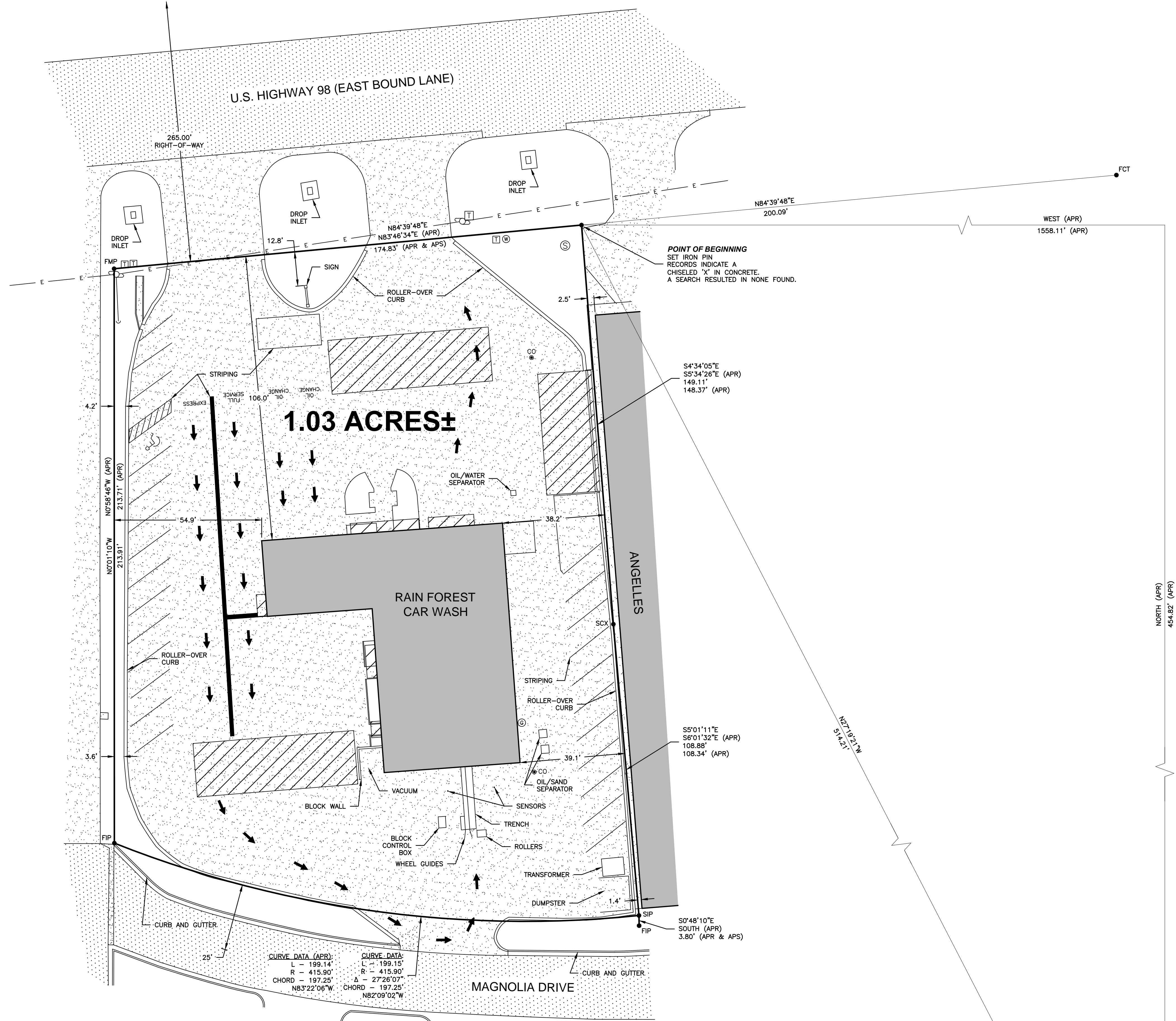
BOUNDARY SURVEY
RAIN FOREST CAR WASH
PART OF THE NW 1/4 OF THE SE 1/4 OF
SECTION 11, TOWNSHIP 4 NORTH, RANGE 14 WEST
LAMAR COUNTY, MISSISSIPPI



I CERTIFY THAT THE INFORMATION CONTAINED ON THIS PLAT IS TRUE AND ACCURATE TO THE BEST OF MY KNOWLEDGE AND BELIEF.

Hunter Andrews
MS PS No. 3123

Date

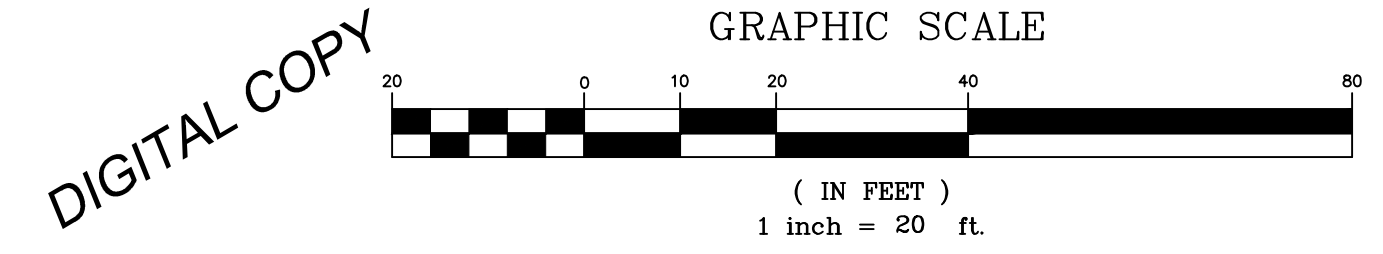


1" = 20'
DIGITAL COPY

LEGEND & ABBREVIATIONS

- APR - AS PER RECORD
- APS - AS PER SURVEY
- FIP - FOUND IRON PIN
- FCT - FOUND CRIMPED TOP PIPE
- FMP - FOUND METAL PIPE
- SIP - SET IRON PIN
- - MONUMENT FOUND/SET
- - NO MONUMENT FOUND/SET
- E — POWER LINE
- ⊕ - UTILITY POLE
- ▨ - ASPHALT PAVEMENT
- ▩ - CONCRETE
- ▭ - TENT/CANOPY
- ⊙ - SEWER MANHOLE
- ⊗ - WATER METER
- ⊠ - TELEPHONE PEDESTAL
- ⊙ - CLEAN-OUT
- ⊙ - GAS METER
- ➔ - TRAFFIC ARROW

- NOTES:**
- 1) SET IRON PINS WERE 1/2" X 18" REBAR.
 - 2) RECORD SEARCH FOR EASEMENTS, RIGHTS-OF-WAY, ETC. AND TITLE OPINION NOT PERFORMED AS PART OF SURVEY.
 - 3) ST. STEPHENS PRINCIPAL MERIDIAN.
- REFERENCE MATERIAL:**
1. WARRANTY DEED FOR PARENT PARCEL ON FILE AT THE LAMAR COUNTY CHANCERY CLERK'S OFFICE IN DB 16E, PG 163.
 2. WARRANTY DEEDS FOR AN ADJACENT PARCELS ON FILE AT THE LAMAR COUNTY CHANCERY CLERK'S OFFICE IN DB 20I, PG 408; DB 17K, PG 515; DB 15L, PG 728; DB 14V, PG 465; AND DB 21K, PG 654.
 3. USGS QUAD MAP.
 4. AERIAL PHOTO TAX MAPS.
 5. MDT STATE HIGHWAY PLANS FOR U.S. HIGHWAY 98, PROJECT NO. RF-014-2(12).



POINT OF COMMENCEMENT
FOUND IRON PIN
SE CORNER OF THE NW 1/4 OF
THE SE 1/4 OF S11, T4N, R14W
LAMAR COUNTY, MS

RECORD POINT OF COMMENCEMENT
NO MONUMENT FOUND, FOUND EVIDENCE
OF A DESTROYED CONCRETE MONUMENT
SE CORNER OF THE NE 1/4 OF THE
SE 1/4 OF S11, T4N, R14W
LAMAR COUNTY, MS

DIGITAL COPY