

BEARINGS ORIENTED BY:
GPS (GEODETIC CONTROL)
DRAWING SCALE: 1" = 20'
CLASS OF SURVEY: B
SURVEYED BY: WHA
DRAWN BY: WHA

PREPARED BY:



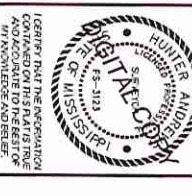
ANDREWS
ENGINEERING, PLLC

175 Shelby Speights Dr., Ste. E / P.O. Box 1835 / Purvis, Mississippi 39475
(601) 794-4555 / Fax: (601) 794-4576 / hunter@andrewsengineering.net

PREPARED FOR:

GORNAK PROPERTIES, LLC

BOUNDARY SURVEY
RAIN FOREST CAR WASH
PART OF THE NW 1/4 OF THE SE 1/4 OF
SECTION 11, TOWNSHIP 4 NORTH, RANGE 14 WEST
LAMAR COUNTY, MISSISSIPPI

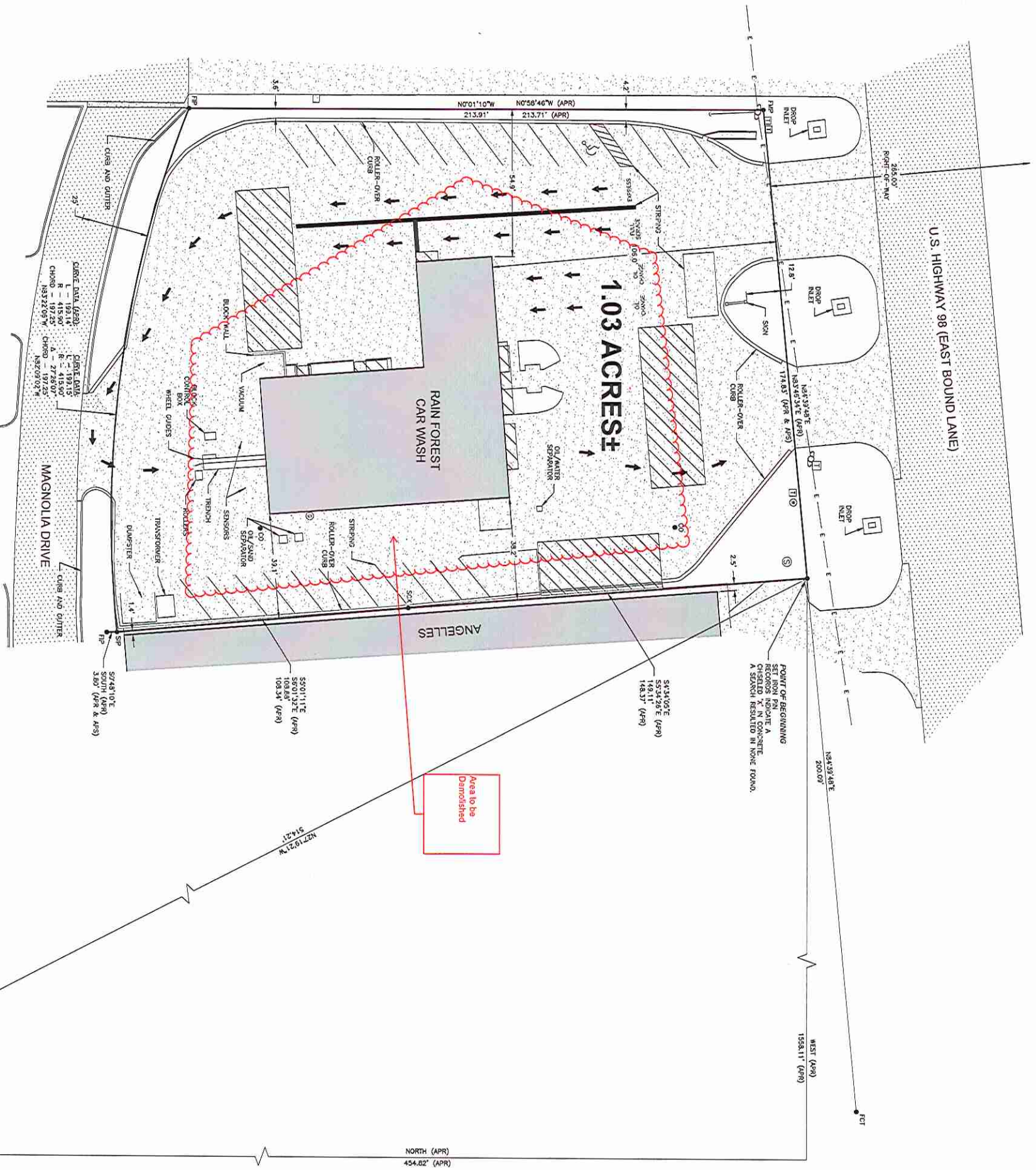
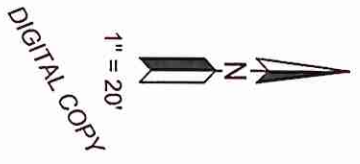


DATE: 05/20/24
DRAWN BY: WHA
CHECKED BY: WHA
DATE: 05/20/24

- LEGEND & ABBREVIATIONS**
- APR - AS PER RECORD
 - AS - AS PER SURVEY
 - FP - FOUND IRON PIN
 - FCI - FOUND CORRODED TIE PEE
 - RP - ROUND REINFORCED TIE PEE
 - SP - SET IRON PIN
 - - MONUMENT FOUND/SET
 - - NO MONUMENT FOUND/SET
 - — — — — POWER LINE
 - - UTILITY POLE
 - ▨ - ASPHALT PAVEMENT
 - ▩ - CONCRETE
 - ▧ - TBN/CANOPY
 - ⊞ - SPHER WASHOLE
 - ⊕ - WATER METER
 - ⊙ - TELEPHONE PENETRATOR
 - ⊖ - CLEAN-OUT
 - ⊗ - GAS METER
 - - TRAFFIC ARROW

RECORD POINT OF COMMENCEMENT
IS THE POINT OF BEGINNING OF A DESTROYED CONCRETE MONUMENT
SE CORNER OF THE NE 1/4 OF THE
SEAM OF SAULT, TEN RISK

POINT OF COMMENCEMENT
SE CORNER OF THE NW 1/4 OF
THE SE 1/4 TOWN CONNT. MS



- NOTES:**
- 1) SET IRON PINS WERE 1/2" X 18" REBAR.
 - 2) RECORD SEARCH FOR RECORDS, OPTION NOT REFERRED AS PART OF SURVEY.
 - 3) ST. STEPHENS PARISH, MISSISSIPPI.

- REFERENCE MATERIAL:**
1. WARRANTY DEED FOR PARBENT LAMAR COUNTY, MISSISSIPPI, CLIENTS OFFICE IN CB 18E, PG 183.
 2. WARRANTY DEEDS FOR AN ADJACENT PARCEL ON FILE AT THE MISSISSIPPI ARCHIVES, CHANCERY CLERK'S OFFICE IN CB 20A, PG 408, 08 17A, 08 21A, 08 42A, AND 08 21A, PG 854.
 3. USGS QUAD MAP.
 4. AERIAL PHOTO TAX MAPS.
 5. MOST STATE HIGHWAY PLANS FOR U.S. HIGHWAY 98, PROJECT NO. 85-014-1(12).

