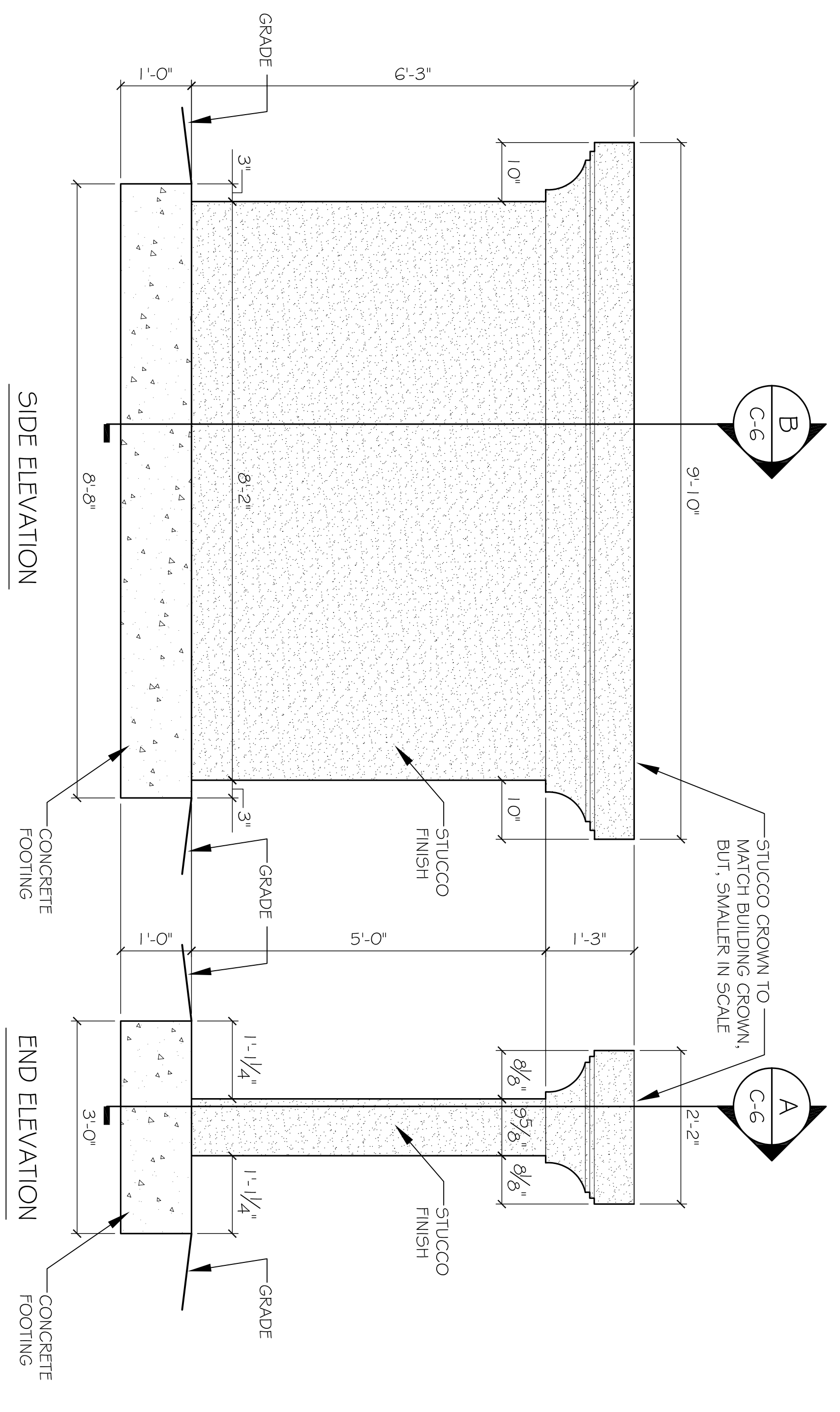


2 SECTIONS
SCALE: 3/4" = 1'-0"



1 ELEVATIONS
SCALE: 3/4" = 1'-0"

REVISIONS	
#	DESCRIPTION

NEW COMMERCIAL BUILDING
DR. FARHAD ADULI

LOT 288 MARI GOLD DRIVE
COVINGTON, LA

JOB No: 2178 DATE: 03-20-2014

DRAWN BY: JTL CHECKED BY:

DAMMON
ENGINEERING, INC.
Architects & Engineers

CHIEF ENGINEER: EMMETT DAMMON, P.E.
CHIEF ARCHITECT: KEVIN KINCHEN, NCARB

554 OLD SPANISH TRAIL
SLIDELL, LA 70458

dammonengineering.com
dammoneng@bellsouth.net
PHONE: 985-649-5832
FAX: 985-641-5950