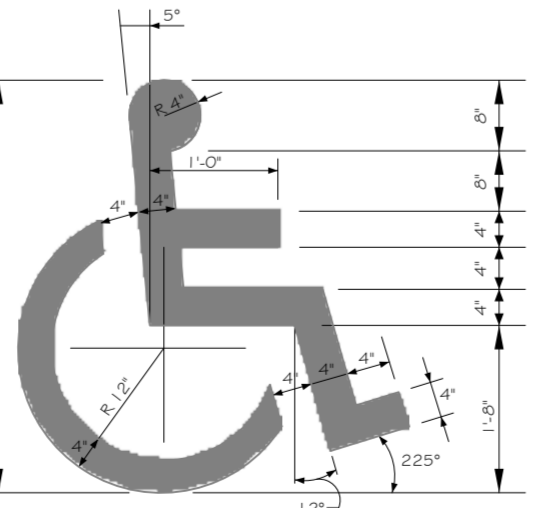
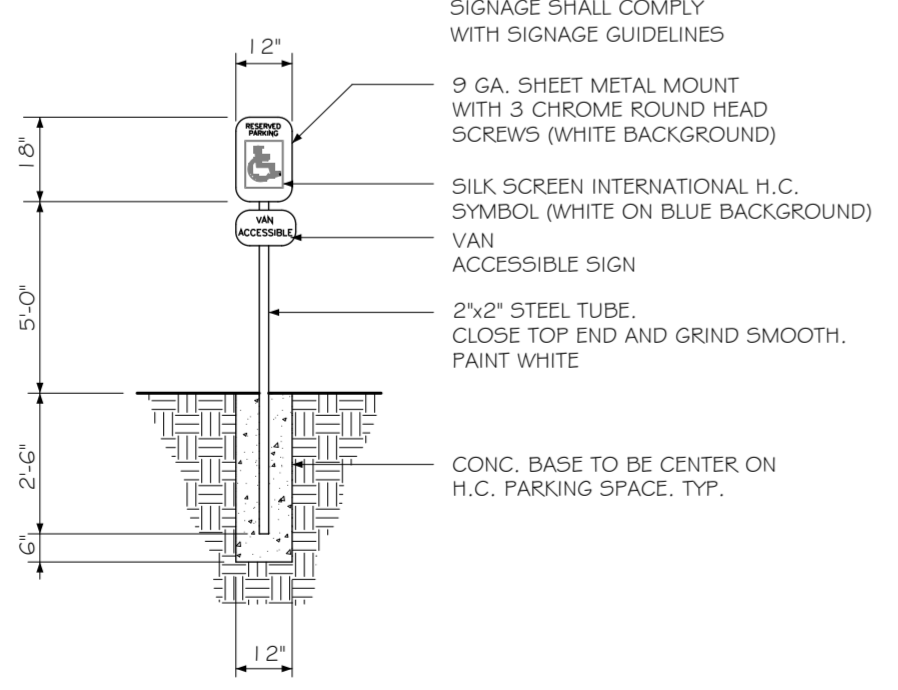


**PARKING REQUIREMENTS**  
 MERCANTILE - 1 PER THREE HUNDRED SQUARE FT. = 27  
 TOTAL PARKING REQUIRED = 27 SPACES INCLUDING  
 2 HANDICAP ACCESSIBLE. TOTAL PROVIDED = 45

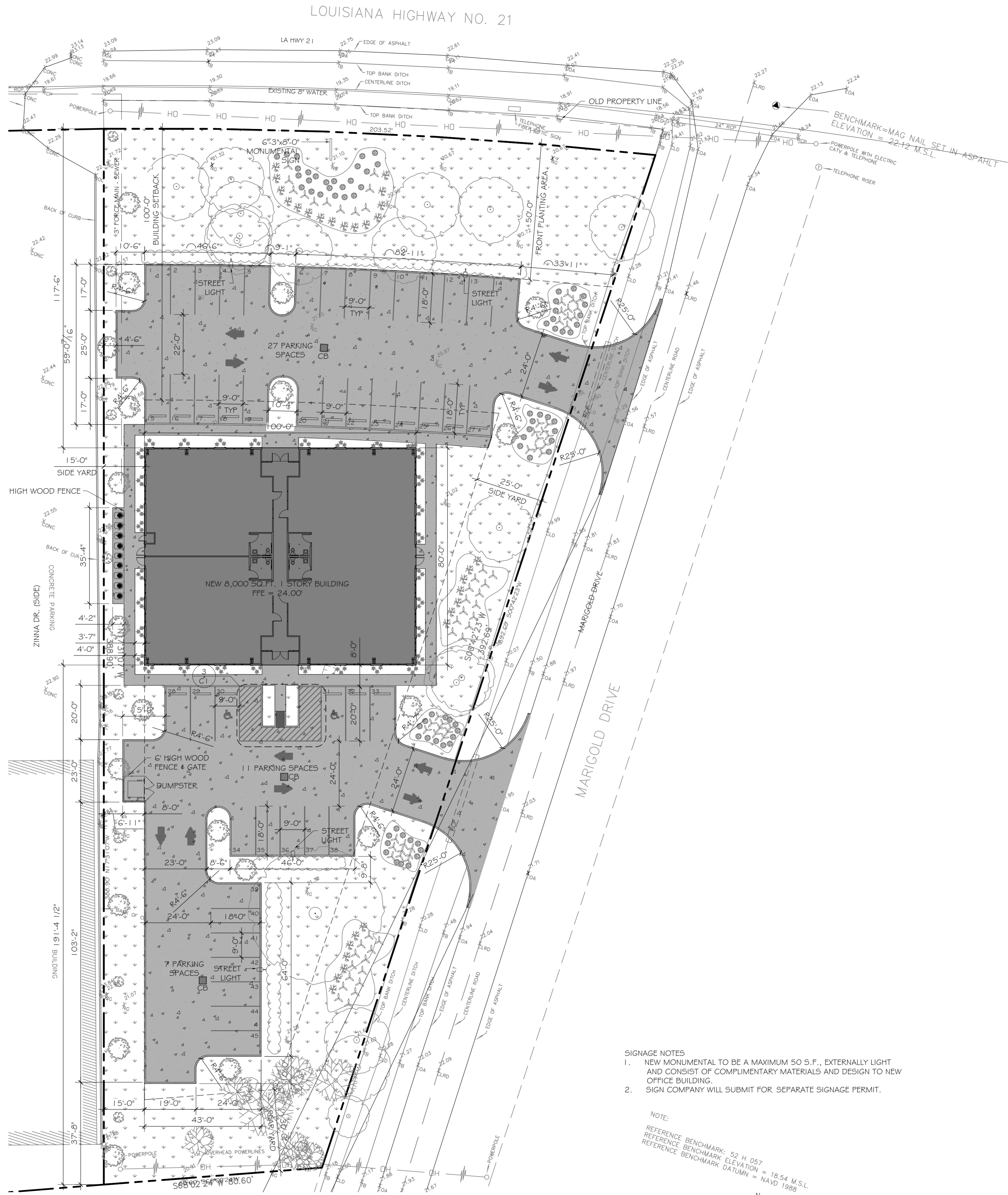
**NOTE:**  
 ALL CONCRETE PAVEMENT SHALL BE 5" THICK CONCRETE EXCEPT FROM PROPERTY LINE TO STREET SHALL BE 6" THICK CONCRETE.

**SITE PLAN NOTES**  
 1. ROOFING MATERIAL: METAL ROOFING PANEL  
 2. SIDING MATERIAL: STUCCO & ALUM STOREFRONT  
 3. UTILITIES: ALL UTILITIES SHALL BE PLACED UNDERGROUND



**SITE LIGHTING**  
 EXTERIOR LIGHTING SHALL BE SHADED OR INWARDLY DIRECTED IN SUCH A MANNER SO THAT NO DIRECT LIGHTING OR GLARE BE CAST BEYOND THE PROPERTY LINE. THE INTENSITY OF SUCH LIGHTING SHALL NOT EXCEED ONE FOOT CANDLE AS MEASURED AT THE ADJUTING PROPERTY LINE. (N/A FOR THIS PARTICULAR JOB)

**2 SITE DETAILS**  
SCALE: N.T.S.



**SIGNAGE NOTES**  
 1. NEW MONUMENTAL TO BE A MAXIMUM 50 S.F., EXTERNALLY LIGHT AND CONSIST OF COMPLIMENTARY MATERIALS AND DESIGN TO NEW OFFICE BUILDING.  
 2. SIGN COMPANY WILL SUBMIT FOR SEPARATE SIGNAGE PERMIT.

**NOTE:**  
 REFERENCE BENCHMARK: 52 H 057  
 REFERENCE BENCHMARK ELEVATION = 18.54 M.S.L.  
 REFERENCE BENCHMARK DATUM = NAVD 1988

**SITE PLAN**  
SCALE: 1" = 200'

**NEW COMMERCIAL BUILDING**  
**DR. FARHAD ADULI**  
 LOT 288 MARIGOLD DRIVE  
 COVINGTON, LA

#	DESCRIPTION	DATE

**REVISIONS**

**SITE PLAN & DETAILS**  
 SHEET No: 5 of 22

**CI**

**DAMMON ENGINEERING, INC.**  
*Architects & Engineers*

dammonengineering.com  
 dammoneng@bellsouth.net  
 PHONE: 985-649-5832  
 FAX: 985-641-5950

CHIEF ENGINEER: EMMETT DAMMON, P.E.  
 CHIEF ARCHITECT: KEVIN KINCHEN, NCARB  
 554 OLD SPANISH TRAIL  
 SUITE 100  
 SUDBURY, LA 70458

DATE: 09-03-2013  
 DRAWN BY: KJK  
 CHECKED BY: KJK  
 JOB No: 2178