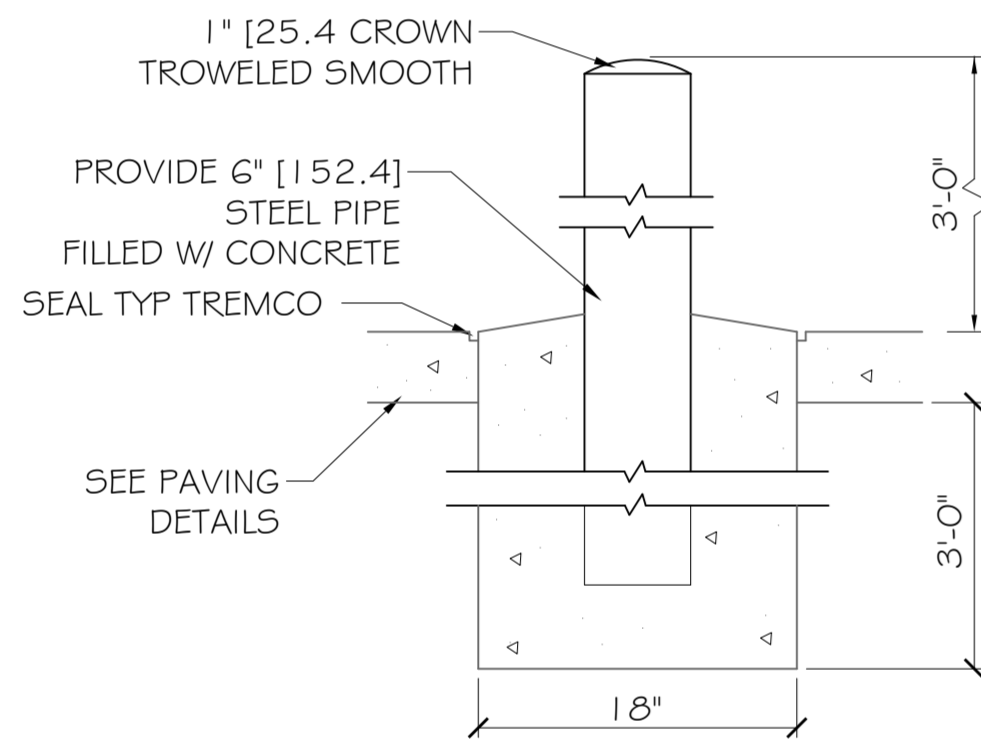


PAVING NOTES:

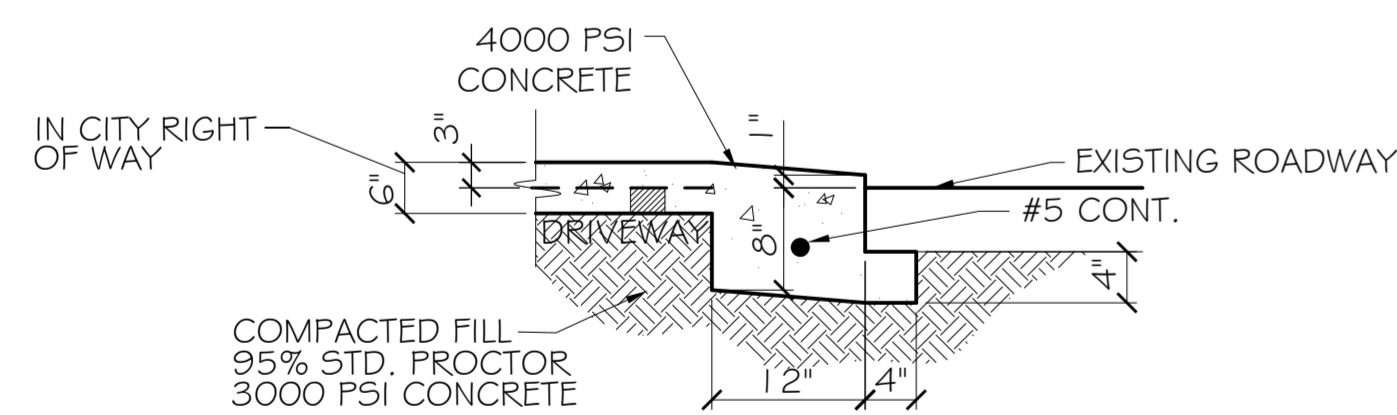
- 1) ALL NEW CONCRETE SHALL HAVE A MINIMUM COMPRESSIVE STRENGTH OF 4,000 PSI AT 28 DAYS AND A MINIMUM THICKNESS OF 5". CONCRETE MIX SHALL BE IN ACCORDANCE WITH THE LATEST REVISION OF ASTM C-150 TYPE I.
- 2) ALL REINFORCING STEEL SHALL MEET ASTM-A615 (GRADE 60).
- 3) ALL REINFORCING STEEL SHALL BE SECURELY SUPPORTED TO PREVENT BOTH VERTICAL AND HORIZONTAL MOVEMENT DURING CONCRETE PLACEMENT. ALL CONTROL AND EXPANSION JOINTS SHALL BE LOCATED AND INSTALLED AS SHOWN ON THE PAVING PLAN AND IN ACCORDANCE WITH THE MANUFACTURER'S RECOMMENDATIONS.
- 4) ALL SUB GRADE FILL SHALL BE SELECT GRANULAR MATERIAL COMPACTED TO 95% STANDARD PROCTOR DENSITY IN A MAXIMUM OF 6" LIFTS.
- 5) CONTRACTOR SHALL CONTACT THEIR REGULATORY DEPARTMENT OF ENGINEERING PRIOR TO CONDUCTING ANY WORK.
- 6) ANY WORK WITHIN THE ROADWAY OR ADJACENT TO THE ROADWAY CAUSING AN INTERFERENCE TO VEHICULAR TRAFFIC REQUIRES PRIOR APPROVAL FROM THE CITY TRAFFIC ENGINEERING DIVISION, AND MUST CONFORM TO THE REQUIREMENTS SET FORTH BY THE UNIFORM MANUAL OF TRAFFIC CONTROL DEVICES OF THE STATE OF LOUISIANA. THE CONTRACTOR MUST FURNISH ALL NECESSARY TRAFFIC SIGNS AND/OR BARRICADES AND MAINTAIN THEM DURING CONSTRUCTION ACTIVITY.

PAVING LEGEND

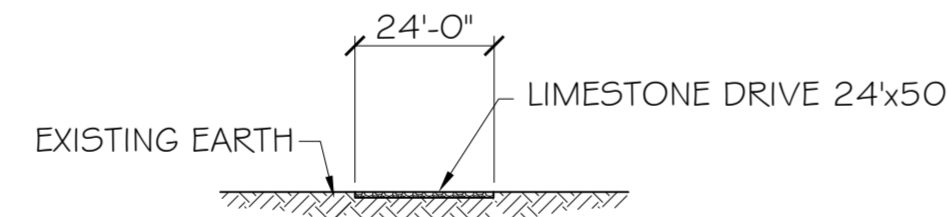
- PROPERTY LINE
- CONTROL JT.
- EXPANSION JT.
- TEMPORARY SILT FENCING
- # - T.O. GRATE ELEVATION
- ⊕ - INVERT ELEVATION
- ⊙ - NEW ELEVATIONS
- EL=00.00 - EXISTING ELEVATIONS
- ▣ - NEW DROP INLET w/TEMP. SILT FENCING



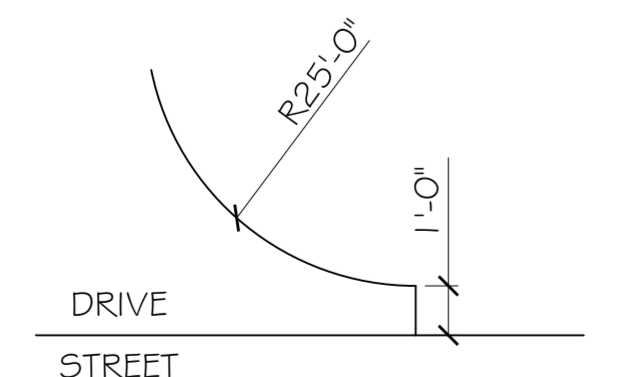
PIPE BOLLARD DETAIL
N. T. S.



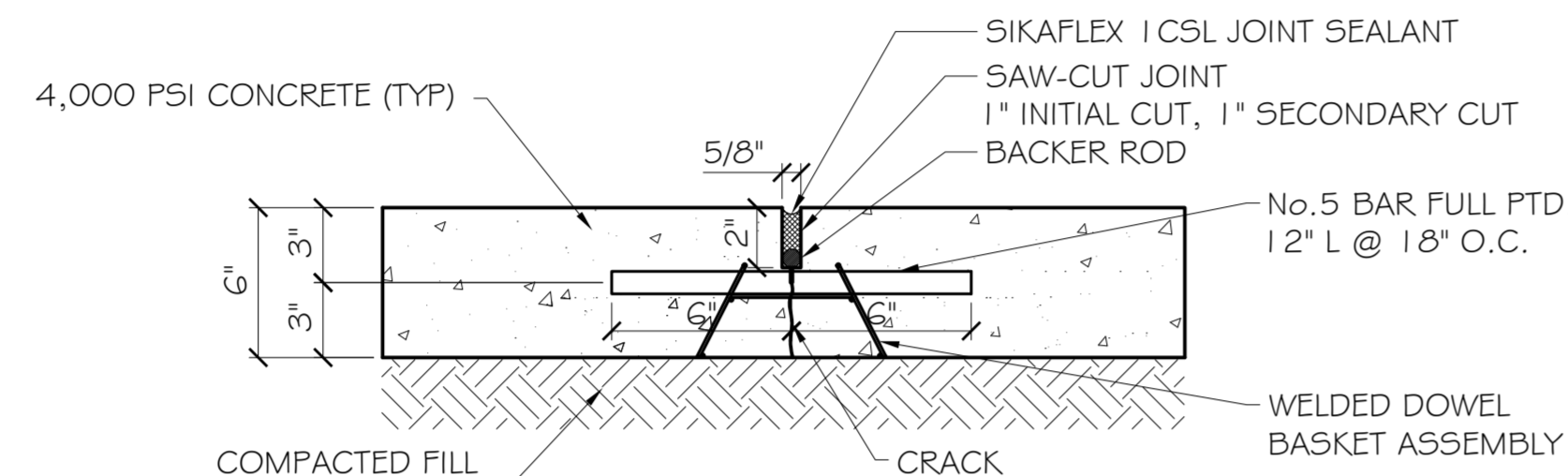
DRIVEWAY SECTION (DS)
N.T.S.



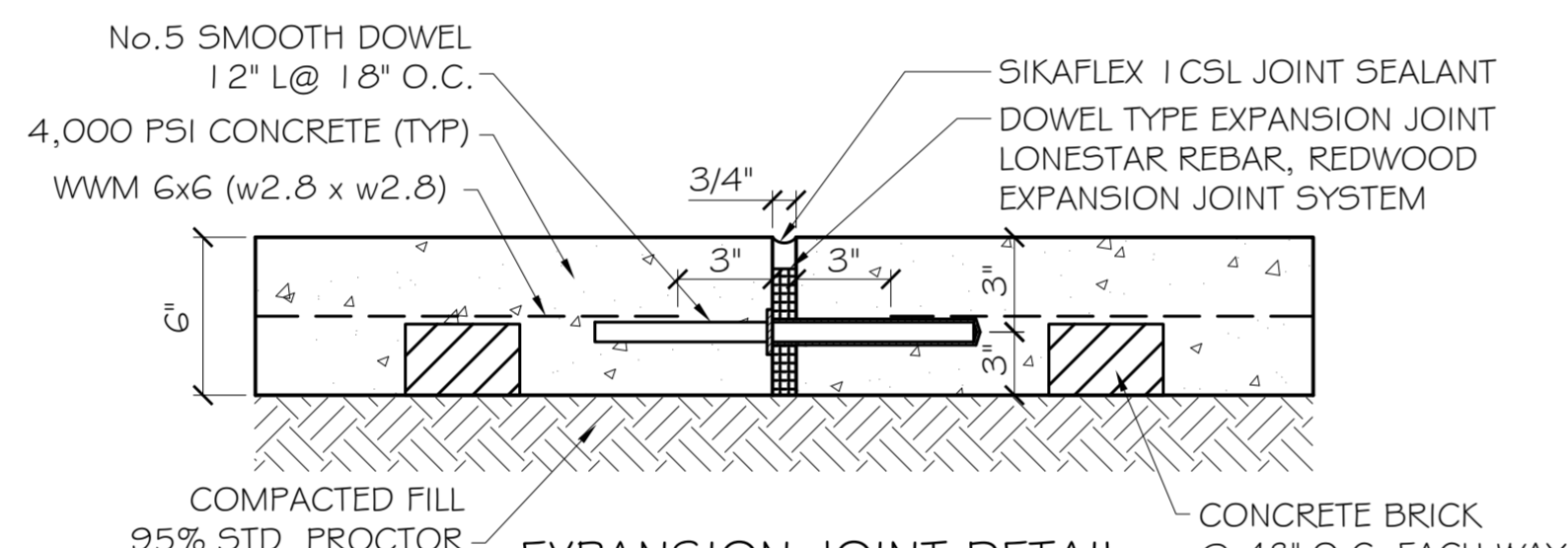
TEMP. ENTRANCE DETAIL
N.T.S.



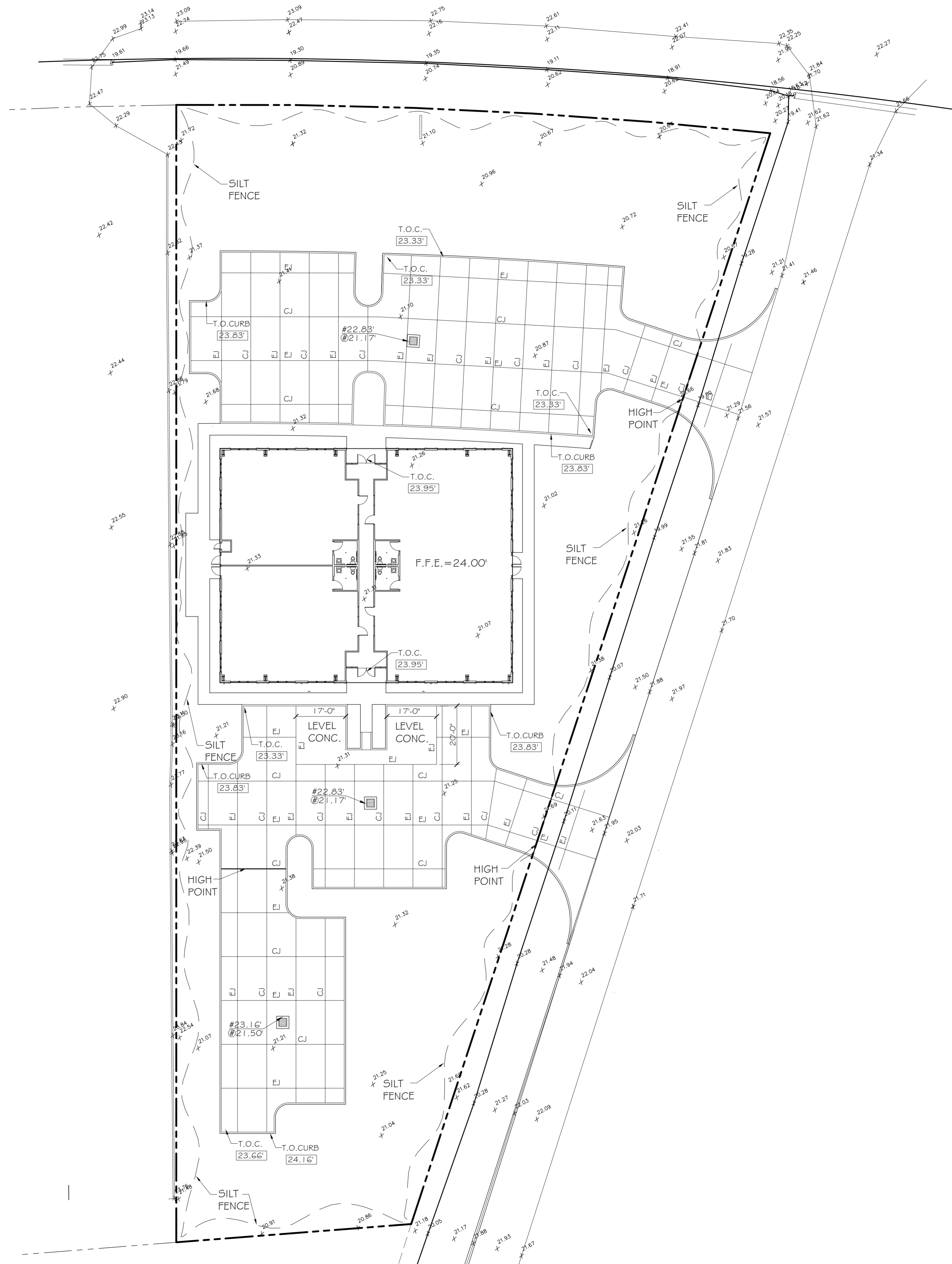
TYPICAL ENTRANCE DETAIL
N.T.S.



CONTROL JOINT DETAIL
N.T.S.



EXPANSION JOINT DETAIL
N.T.S.



NEW COMMERCIAL BUILDING
DR. FARHAD ADULI
LOT 288 MARGOLD DRIVE
COVINGTON, LA

#	DESCRIPTION	REVISIONS	DATE

JOB No: 2178 DATE: 09-03-2013
DRAWN BY: JTL CHECKED BY: KJK

SITE PAVING PLAN & DETAILS

SHEET No: 7 of 22

C3

DAMMON ENGINEERING, INC.
Architects & Engineers

Administrative: 504-985-6411
dammon@bellouth.net
PHONE: 985-649-5432
FAX: 985-641-5950

CHIEF ENGINEER: RAMMETT DAMMON, P.E.
CHIEF ARCHITECT: KEVIN KIRCHEN, NCARB
554 OLD SPANISH TRAIL
SUITE 100
SUDBURY, LA 70458