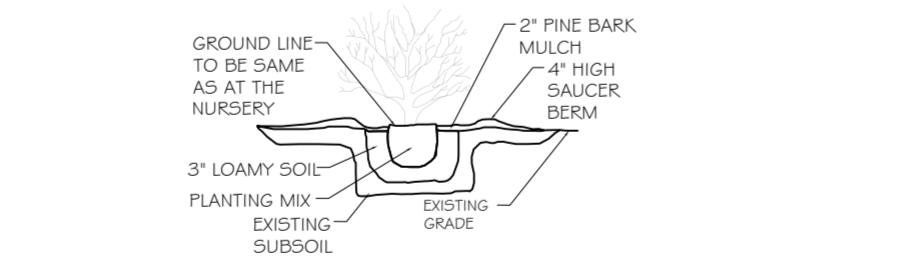
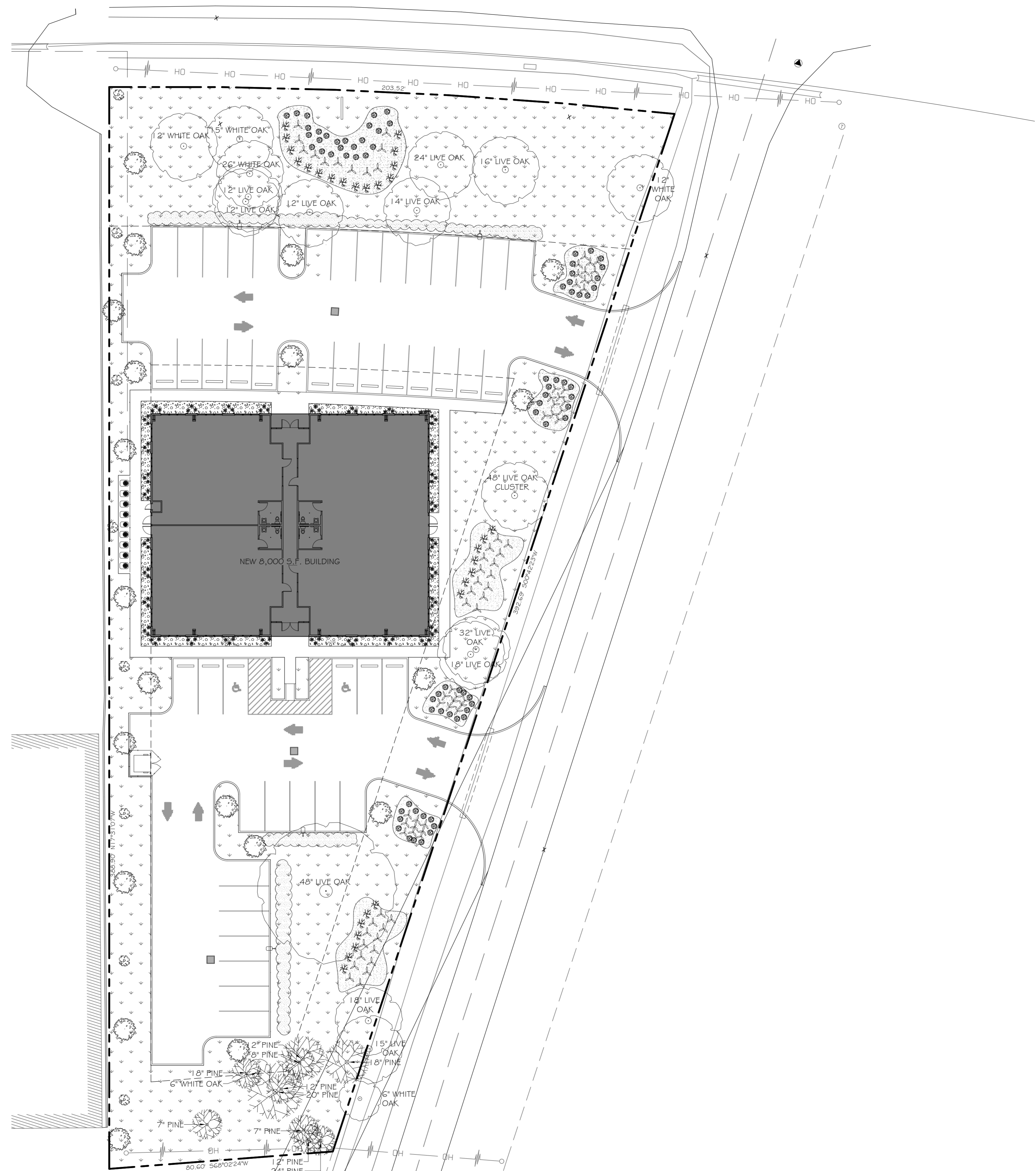
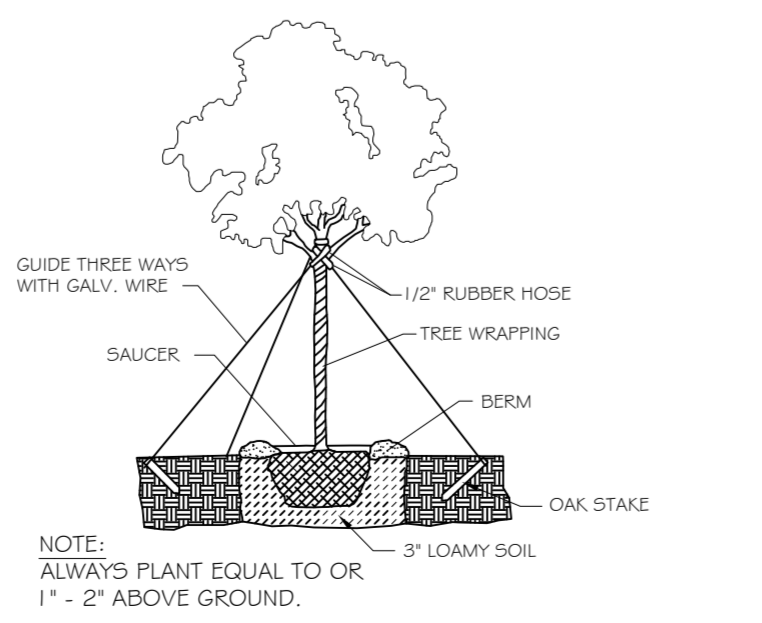


LANDSCAPE LEGEND	
	- DD BLANCHARD MAGNOLIA ALL CLASS "A" TREES, AT THE TIME OF PLANTING, SHALL HAVE A MINIMUM CALIPER OF AT LEAST TWO AND ONE-HALF (2 1/2) INCHES, MEASURED SIX (6") INCHES ABOVE THE ROOT BALL, AND A MINIMUM HEIGHT OF 10-12 FEET AND A MATURE HEIGHT OF 40' AS PER THE NATIONAL NURSERY ASSOCIATION STANDARDS.
	- LITTLE GEM MAGNOLIA ALL CLASS "B" TREES AND ALL TREES, OTHER THAN CLASS "A" TREES, AT THE TIME OF PLANTING, SHALL HAVE A MINIMUM CALIPER OF AT LEAST ONE AND ONE-HALF (1 1/2) INCHES MEASURED (6") SIX INCHES ABOVE THE ROOT BALL AND A MINIMUM HEIGHT OF 8-10 FEET AND A MATURE HEIGHT OF 20' AS PER THE NATIONAL NURSERY ASSOCIATION STANDARDS.
	- JUNIPER SHRUB: A RELATIVELY LOW-GROWING BUSHY PLANT, USUALLY WITH WOODY STEMS. FOR THE PURPOSES OF THIS DEFINITION, GROUND COVER, TREES AND ANNUALS ARE NOT CONSIDERED SHRUBS. ALL SHRUBS, AT THE TIME OF PLANTING, SHALL HAVE A MINIMUM HEIGHT OF TWO (2) FEET.
	- LIGUSTRUM HEDGE, 3' IN HEIGHT PLANTED WITH A MATURE HEIGHT 8' TO 10'
	- ROSES
	- HAWTHORNE - 25
	- SHISHI SASANQUA SHRUB
	EXISTING OAK TREE TO REMAIN. SIZE AND TYPE IDENTIFIED ON PLAN.
	EXISTING PINE TREE TO REMAIN. SIZE IDENTIFIED ON PLAN.
	- PINE STRAW
	- RIVER STONE GROUND COVER
	- CENTIPECT GRASS



3 SHRUB DETAIL
SCALE: NTS



2 TYPICAL TREE PLANTING DETAIL
SCALE: NTS

DAMMON
ENGINEERING, INC.
Architects & Engineers

ADMINISTRATIVE: dammon@dammon.com
PHONE: 985-641-5932
FAX: 985-641-5950

CHIEF ENGINEER: RAMMETT DAMMON, P.E.
CHIEF ARCHITECT: KEVIN KIRCHEN, NCARB
554 OLD SPANISH TRAIL
SUDELL, LA 70455

NEW COMMERCIAL BUILDING
DR. FARHAD ADULI
LOT 288 MARGOLD DRIVE
COVINGTON, LA

JOB No: 2178 DATE: 09-03-2013
DRAWN BY: KJK CHECKED BY: KJK

DESCRIPTION REVISIONS DATE

LANDSCAPING PLAN

SHEET No: 4 of 22

L1

LANDSCAPING PLAN
SCALE: 1" = 20'