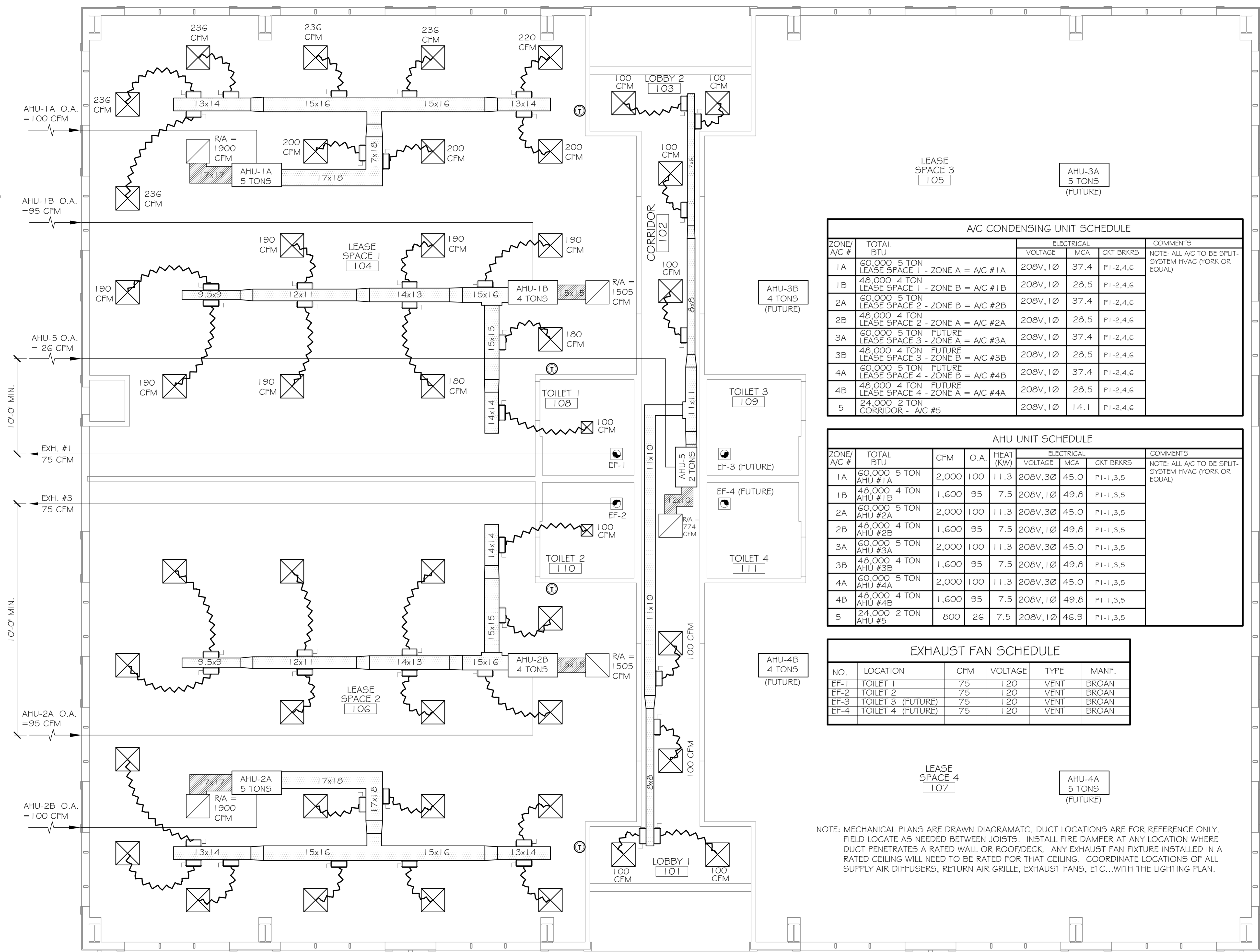


LEGEND

- SUPPLY AIR GRILLE
- RETURN AIR GRILLE
- EXHAUST FAN
- THERMOSTAT
- SUPPLY AIR DUCT
- RETURN AIR DUCT
- DAMPER
- ROUND FLEX DUCT, MAX. LENGTH 12'-0", MIN. R-G, PROVIDE MAN. DAMPER AT DIFFUSER CONNECTIONS, SIZE AS INDICATED OR: 0-200 CFM, USE 6"Ø; 201-300 CFM, USE 8"Ø; 301-400 CFM, USE 9"Ø

- AC-1A 5 TONS
- AC-1B 4 TONS
- AC-5 2 TONS
- AC-2A 5 TONS
- AC-2B 4 TONS
- AC-3A 5 TONS (FUTURE)
- AC-3B 4 TONS (FUTURE)
- AC-4A 5 TONS (FUTURE)
- AC-4B 4 TONS (FUTURE)



A/C CONDENSING UNIT SCHEDULE						
ZONE/ A/C #	TOTAL BTU	ELECTRICAL			COMMENTS	
		VOLTAGE	MCA	CKT BRKRS		
1A	60,000 5 TON LEASE SPACE 1 - ZONE A = A/C #1A	208V, 1Ø	37.4	PI-2,4,6	NOTE: ALL A/C TO BE SPLIT-SYSTEM HVAC (YORK OR EQUAL)	
1B	48,000 4 TON LEASE SPACE 1 - ZONE B = A/C #1B	208V, 1Ø	28.5	PI-2,4,6		
2A	60,000 5 TON LEASE SPACE 2 - ZONE B = A/C #2B	208V, 1Ø	37.4	PI-2,4,6		
2B	48,000 4 TON LEASE SPACE 2 - ZONE A = A/C #2A	208V, 1Ø	28.5	PI-2,4,6		
3A	60,000 5 TON FUTURE LEASE SPACE 3 - ZONE A = A/C #3A	208V, 1Ø	37.4	PI-2,4,6		
3B	48,000 4 TON FUTURE LEASE SPACE 3 - ZONE B = A/C #3B	208V, 1Ø	28.5	PI-2,4,6		
4A	60,000 5 TON FUTURE LEASE SPACE 4 - ZONE B = A/C #4B	208V, 1Ø	37.4	PI-2,4,6		
4B	48,000 4 TON FUTURE LEASE SPACE 4 - ZONE A = A/C #4A	208V, 1Ø	28.5	PI-2,4,6		
5	24,000 2 TON CORRIDOR - A/C #5	208V, 1Ø	14.1	PI-2,4,6		

AHU UNIT SCHEDULE								
ZONE/ A/C #	TOTAL BTU	CFM	O.A.	HEAT (KW)	ELECTRICAL			COMMENTS
					VOLTAGE	MCA	CKT BRKRS	
1A	60,000 5 TON AHU #1A	2,000	100	11.3	208V, 3Ø	45.0	PI-1,3,5	NOTE: ALL A/C TO BE SPLIT-SYSTEM HVAC (YORK OR EQUAL)
1B	48,000 4 TON AHU #1B	1,600	95	7.5	208V, 1Ø	49.8	PI-1,3,5	
2A	60,000 5 TON AHU #2A	2,000	100	11.3	208V, 3Ø	45.0	PI-1,3,5	
2B	48,000 4 TON AHU #2B	1,600	95	7.5	208V, 1Ø	49.8	PI-1,3,5	
3A	60,000 5 TON AHU #3A	2,000	100	11.3	208V, 3Ø	45.0	PI-1,3,5	
3B	48,000 4 TON AHU #3B	1,600	95	7.5	208V, 1Ø	49.8	PI-1,3,5	
4A	60,000 5 TON AHU #4A	2,000	100	11.3	208V, 3Ø	45.0	PI-1,3,5	
4B	48,000 4 TON AHU #4B	1,600	95	7.5	208V, 1Ø	49.8	PI-1,3,5	
5	24,000 2 TON AHU #5	800	26	7.5	208V, 1Ø	46.9	PI-1,3,5	

EXHAUST FAN SCHEDULE					
NO.	LOCATION	CFM	VOLTAGE	TYPE	MANF.
EF-1	TOILET 1	75	120	VENT	BROAN
EF-2	TOILET 2	75	120	VENT	BROAN
EF-3	TOILET 3 (FUTURE)	75	120	VENT	BROAN
EF-4	TOILET 4 (FUTURE)	75	120	VENT	BROAN

NOTE: MECHANICAL PLANS ARE DRAWN DIAGRAMATIC. DUCT LOCATIONS ARE FOR REFERENCE ONLY. FIELD LOCATE AS NEEDED BETWEEN JOISTS. INSTALL FIRE DAMPER AT ANY LOCATION WHERE DUCT PENETRATES A RATED WALL OR ROOF/DECK. ANY EXHAUST FAN FIXTURE INSTALLED IN A RATED CEILING WILL NEED TO BE RATED FOR THAT CEILING. COORDINATE LOCATIONS OF ALL SUPPLY AIR DIFFUSERS, RETURN AIR GRILLE, EXHAUST FANS, ETC...WITH THE LIGHTING PLAN.

NEW COMMERCIAL BUILDING
DR. FARHAD ADULI
LOT 288 MARIGOLD DRIVE
COVINGTON, LA

REVISIONS	DATE

MECHANICAL PLAN

SHEET No: 20 of 22

DAMMON ENGINEERING, INC.
Architects & Engineers

CHIEF ENGINEER: FRANK DAMMON, P.E.
CHIEF ARCHITECT: KEVIN KINCHEN, NCARB
554 OLD SPANISH TRAIL
SUITE 101, LA 70456
PHONE: 985-649-5932
FAX: 985-641-5950