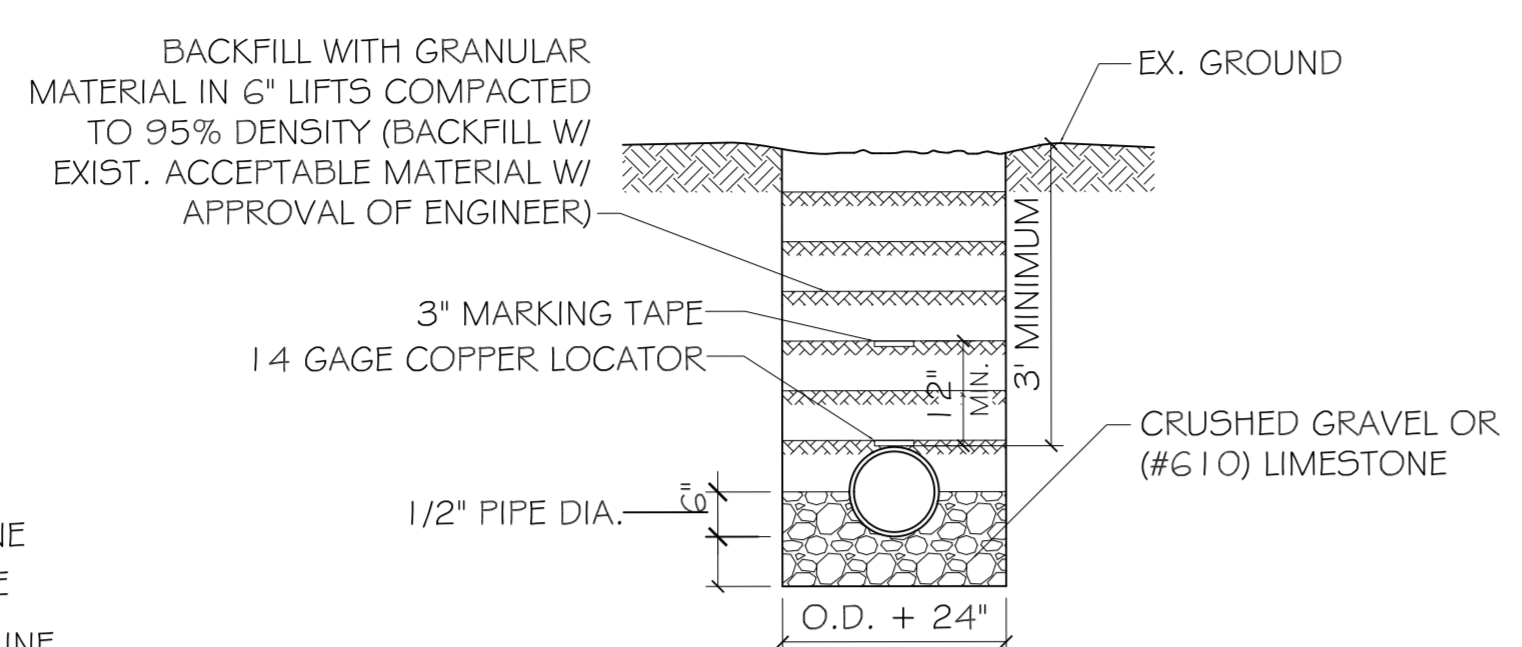
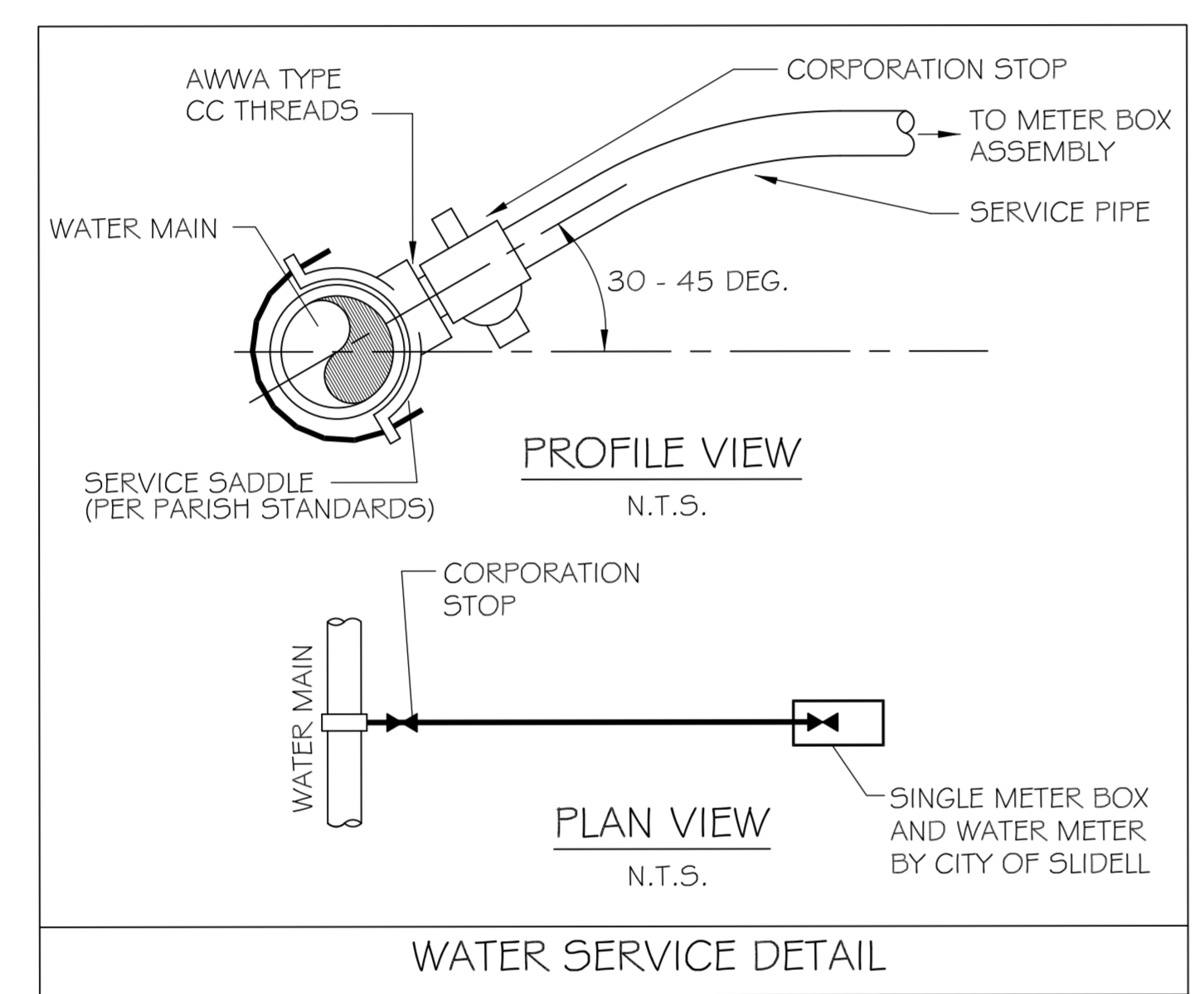


- UTILITY LEGEND**
- — — — — PROPERTY LINE
 - — — — — SETBACK LINE
 - W — NEW WATER LINE
 - S — NEW SEWER LINE
 - - - - - NEW POWER LINE
 - - - - - TEMPORARY SILT FENCING
 - - - - - NEW DRAIN LINE
 - — — — — 6" OPAQUE FENCE



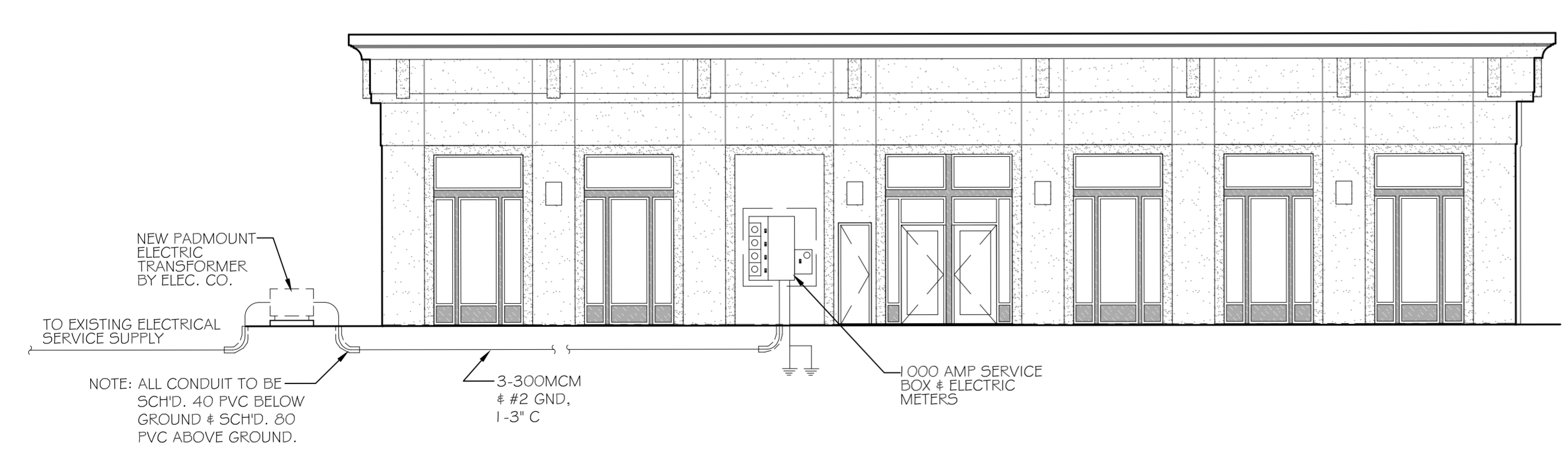
NOTE: A MINIMUM 10' HORZ. AND 18" VERT. SEPARATION IS REQUIRED BETWEEN WATER AND SEWER LINES.

PIPE BEDDING DETAIL FOR SEWER AND WATER
SCALE: N.T.S.

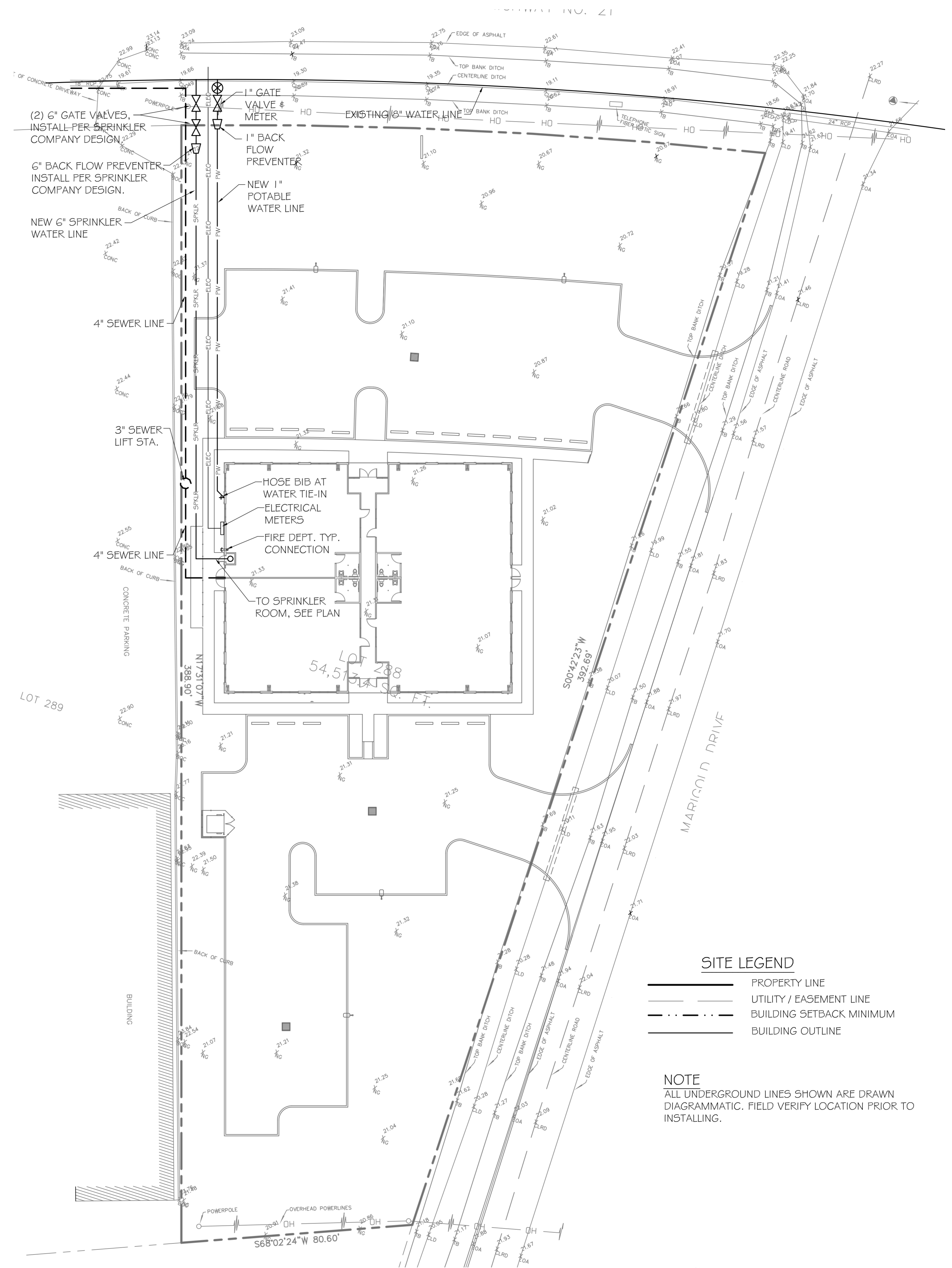


WATER SERVICE DETAIL
N.T.S.

- UTILITY NOTES:**
1. ELECTRICAL - SCH. 80 PVC CONDUIT WHERE PIPE IS EXPOSED OUTSIDE OF BUILDING WALL. TRANSITION BACK TO SCH. 40 PVC @ 90° PVC ELBOW BELOW GRADE. ALL 90° FITTINGS TO BE 36" LONG SWEEP TYPE.
 2. COORDINATE WITH ELEC. COMPANY REGARDING ELECTRICAL SERVICE CONNECTION.
 3. TIE THE NEW WATER SERVICE INTO EXISTING WATER MAIN, FIELD VERIFY LOCATION. SEE DETAIL THIS SHEET



ELECTRICAL SERVICE DETAIL
N.T.S.



- SITE LEGEND**
- — — — — PROPERTY LINE
 - — — — — UTILITY / EASEMENT LINE
 - - - - - BUILDING SETBACK MINIMUM
 - — — — — BUILDING OUTLINE

NOTE
ALL UNDERGROUND LINES SHOWN ARE DRAWN DIAGRAMMATIC. FIELD VERIFY LOCATION PRIOR TO INSTALLING.

NEW COMMERCIAL BUILDING
DR. FARHAD ADULI
LOT 288 MARGOLD DRIVE
COVINGTON, LA

#	DESCRIPTION	DATE

JOB No: 2178 DATE: 09-23-2013
DRAWN BY: KJK CHECKED BY: KJK

SITE UTILITIES PLAN & DETAILS

SHEET No: 6 of 22

DAMMON ENGINEERING, INC.
Architects & Engineers

dammonengineering.com
dammoneng@slidell.net
PHONE: 985-649-5932
FAX: 985-641-5950

CHIEF ENGINEER: BRADY DAMMON, P.E.
CHIEF ARCHITECT: KEVIN KINGHEN, NCARB
554 OLD SPANISH TRAIL
SLIDELL, LA 70458

C2