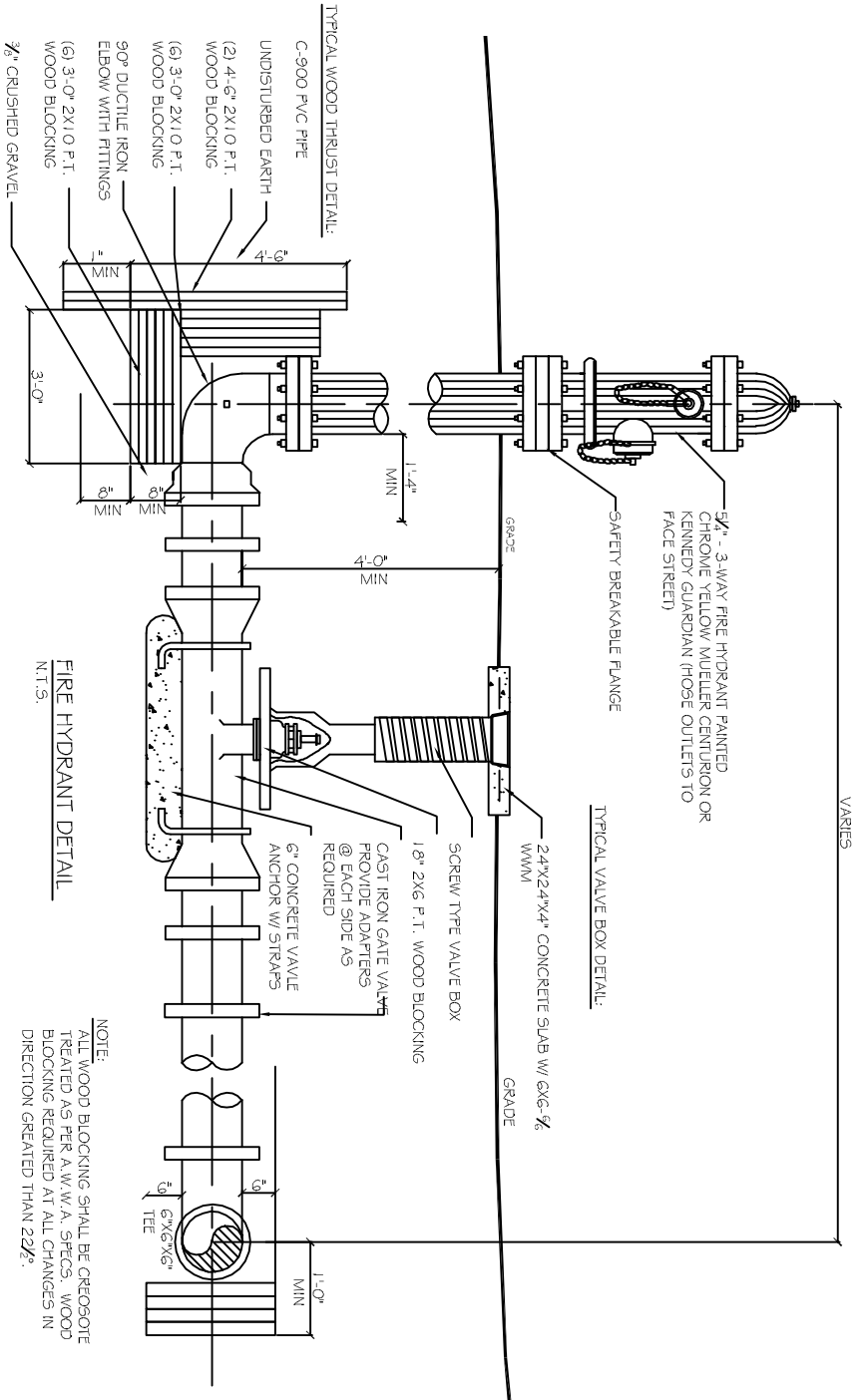


NOTE: A MINIMUM 1'-0\"/>

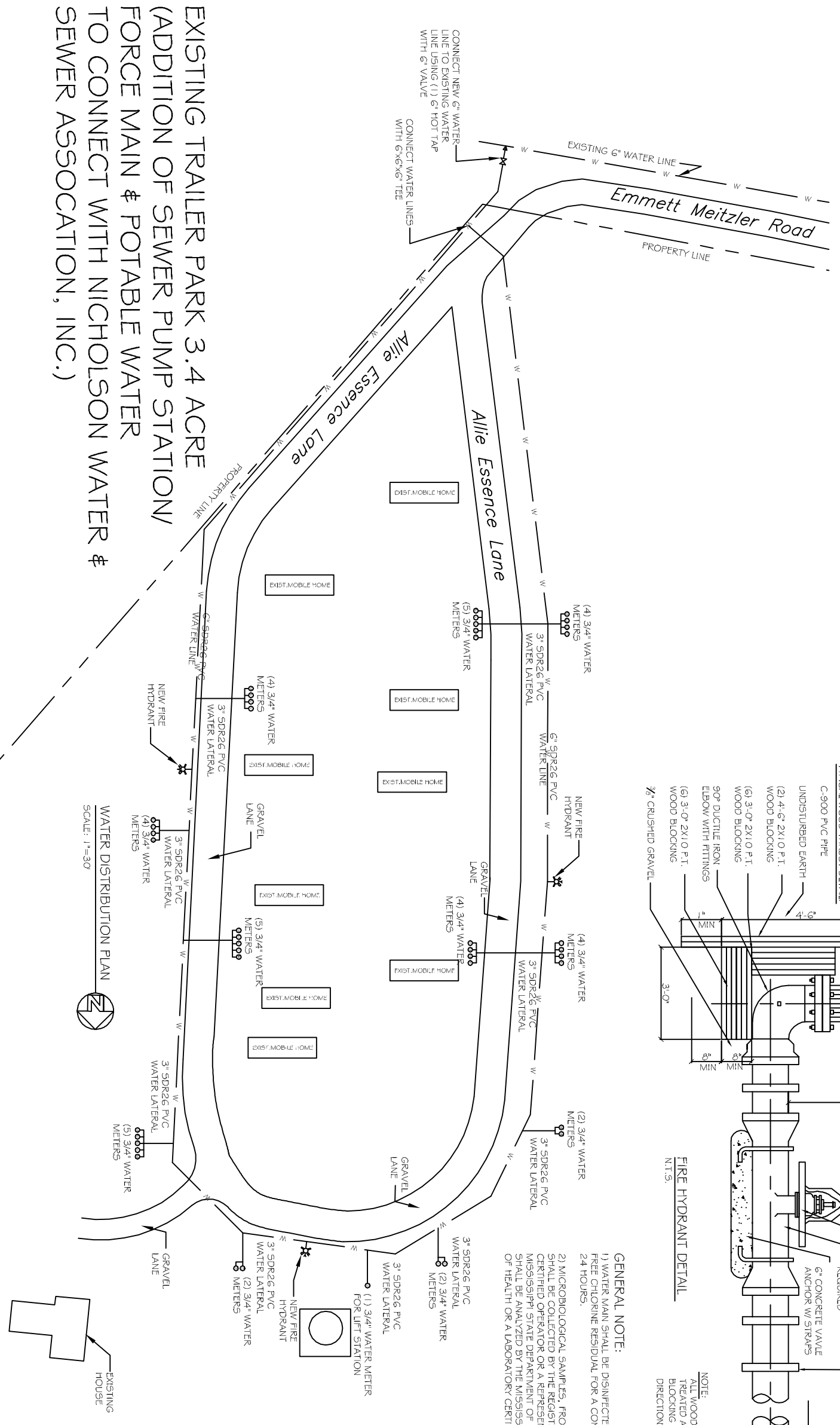
PIPE MAIN BEDDING DETAIL FOR SEWER AND WATER
SCALE: N.T.S.



FIRE HYDRANT DETAIL
N.T.S.

NOTE:
ALL WOOD BLOCKING SHALL BE CREOSOTE TREATED AS PER A.W.W.A. SPECS. WOOD BLOCKING REQUIRED AT ALL CHANGES IN DIRECTION GREATER THAN 22°.

GENERAL NOTE:
1) WATER MAIN SHALL BE DISINFECTED USING A 50MG/L FREE CHLORINE RESIDUAL FOR A CONTACT TIME FOR 24 HOURS.
2) MICROBIOLOGICAL SAMPLES, FROM THE WATER MAINS SHALL BE COLLECTED BY THE REGISTERED ENGINEER, CERTIFIED OPERATOR OR A REPRESENTATIVE OF THE MISSISSIPPI STATE DEPARTMENT OF HEALTH. THE SAMPLES SHALL BE ANALYZED BY THE MISSISSIPPI STATE DEPARTMENT OF HEALTH OR A LABORATORY CERTIFIED BY THE STATE.



EXISTING TRAILER PARK 3.4 ACRE
(ADDITION OF SEWER PUMP STATION/
FORCE MAIN & POTABLE WATER
TO CONNECT WITH NICHOLSON WATER &
SEWER ASSOCIATION, INC.)

WATER DISTRIBUTION PLAN
SCALE: 1"=30'

REVISIONS	
#	DESCRIPTION

DREAMLAND MOBILE HOME PARK
ALLIE ESSENCE LANE
NICHOLSON, MISSISSIPPI

JOB No: 2182 DATE: 05-19-2014
DRAWN BY: CKD CHECKED BY: BM

DAMMON ENGINEERING, INC.
Architects & Engineers

CHIEF ENGINEER: BRIAN MISTICH, P.E.
CHIEF ARCHITECT: KEVIN KINCHEN

dammonengineering.com
dammoneng@bellsouth.net
PHONE: 985-649-5832
FAX: 985-641-5835

C3

WATER DISTRIBUTION PLAN
SHEET No: 04 OF 04