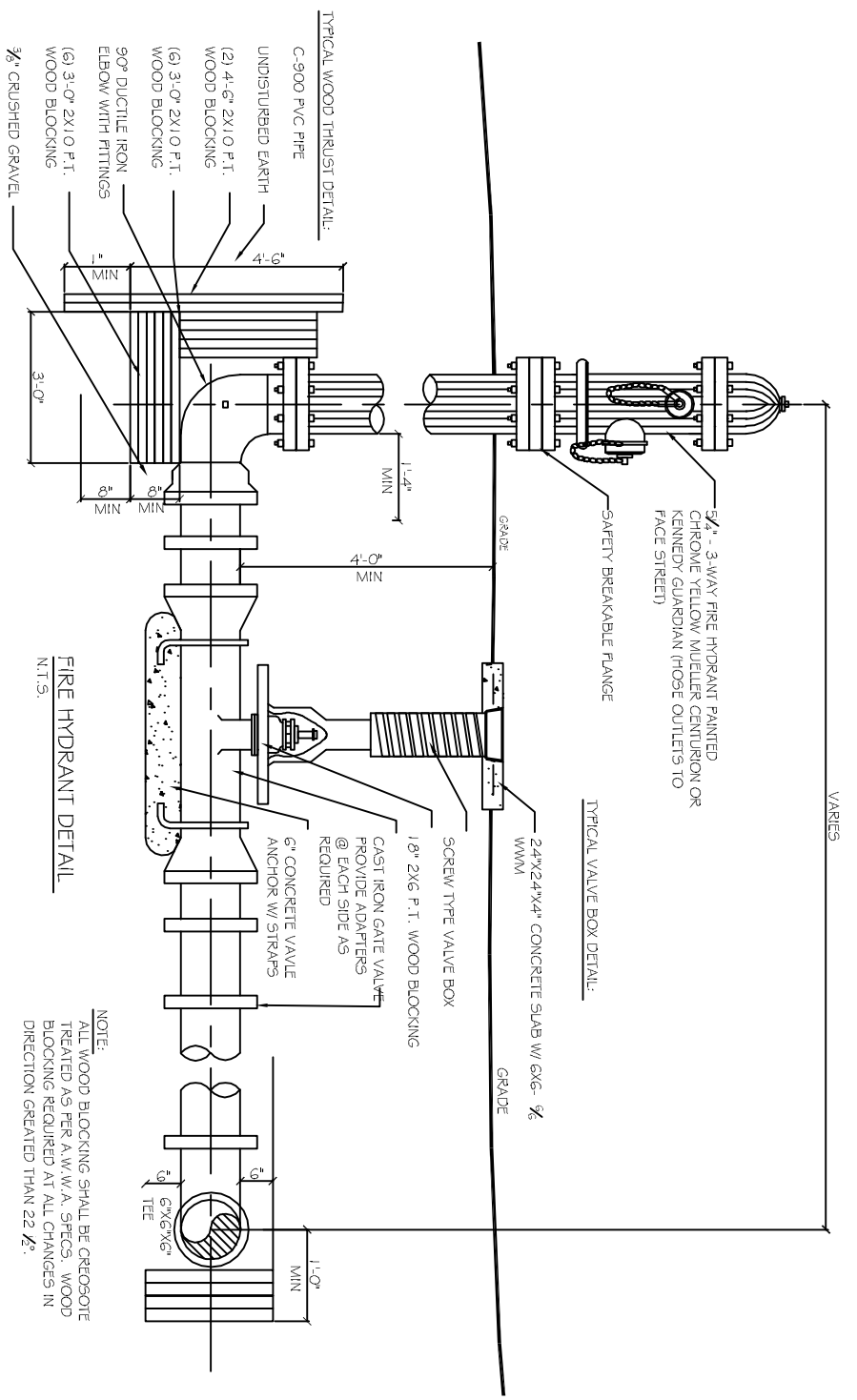
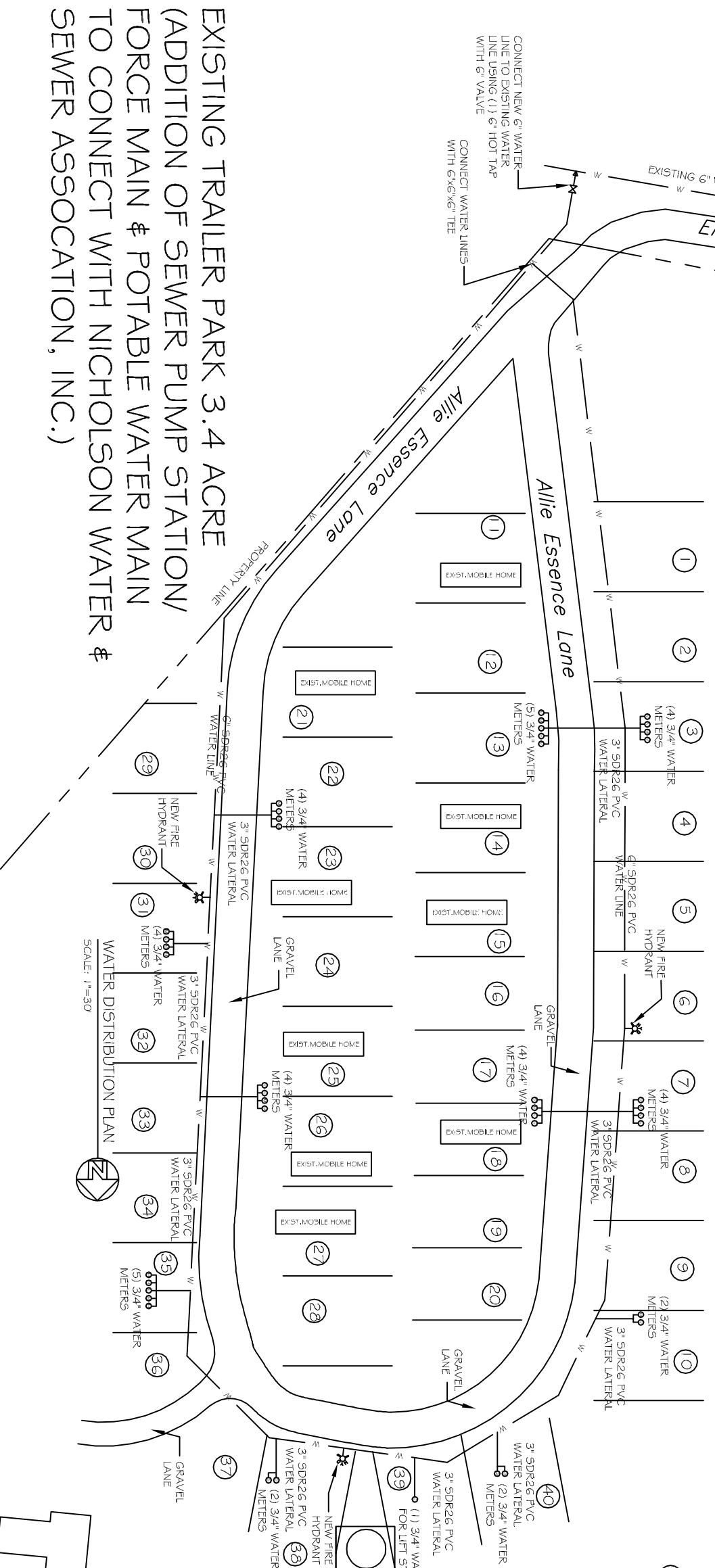


NOTE: A MINIMUM 1'-0" HORIZ. AND 18" VERT. SEPARATION (WITH WATER MAIN ON TOP) IS REQUIRED BETWEEN WATER AND SEWER LINES.  
SCALE: N.T.S.



NOTE: ALL WOOD BLOCKING SHALL BE CREOSOTE TREATED AS PER A.W.W.A. SPECS. WOOD BLOCKING REQUIRED AT ALL CHANGES IN DIRECTION GREATER THAN 22 1/2°.



CONNECT NEW 6" WATER LINE TO EXISTING WATER LINE USING (1) 6" HOT TAP WITH 6" VALVE  
CONNECT WATER LINES WITH 6"x6"x6" TEE

EXISTING TRAILER PARK 3.4 ACRE (ADDITION OF SEWER PUMP STATION/ FORCE MAIN & POTABLE WATER MAIN TO CONNECT WITH NICHOLSON WATER & SEWER ASSOCIATION, INC.)

**LEGEND:**  
40 DENOTES TRAILER COUNT

**GENERAL NOTE:**  
1) WATER MAIN SHALL BE DISINFECTED USING A 50MG/L FREE CHLORINE RESIDUAL FOR A CONTACT TIME FOR 24 HOURS.  
2) MICROBIOLOGICAL SAMPLES, FROM THE WATER MAINS SHALL BE COLLECTED BY THE REGISTERED ENGINEER, CERTIFIED OPERATOR OR A REPRESENTATIVE OF THE MISSISSIPPI STATE DEPARTMENT OF HEALTH. THE SAMPLES SHALL BE ANALYZED BY THE MISSISSIPPI STATE DEPARTMENT OF HEALTH OR A LABORATORY CERTIFIED BY THE STATE.  
3) WATER MAIN SHALL BE SEPARATED FROM SEWER MAINS BY 1'-0" WHEN RUNNING PARALLEL (HORIZONTALLY) AND WATER MAIN SHALL BE INSTALLED 1'-0" ABOVE THE SEWER MAIN (VERTICALLY).

NO.	DESCRIPTION	DATE

**DREAMLAND MOBILE HOME PARK**  
ALLIE ESSENCE LANE  
NICHOLSON, MISSISSIPPI

JOB No: 2182      DATE: 05-19-2014

DRAWN BY: CKD      CHECKED BY: BM

**DAMMON ENGINEERING, INC.**  
Architects & Engineers

CHIEF ENGINEER: BRIAN MISTICH, P.E.  
CHIEF ARCHITECT: KEVIN KINCHEN

554 OLD SPANISH TRAIL  
SLIDE, LA 70458

dammonengineering.com  
dammoneng@bellsouth.net  
PHONE: 985-644-5802  
FAX: 985-641-5950

WATER DISTRIBUTION PLAN

SHEET NO: 04 OF 04

**C3**