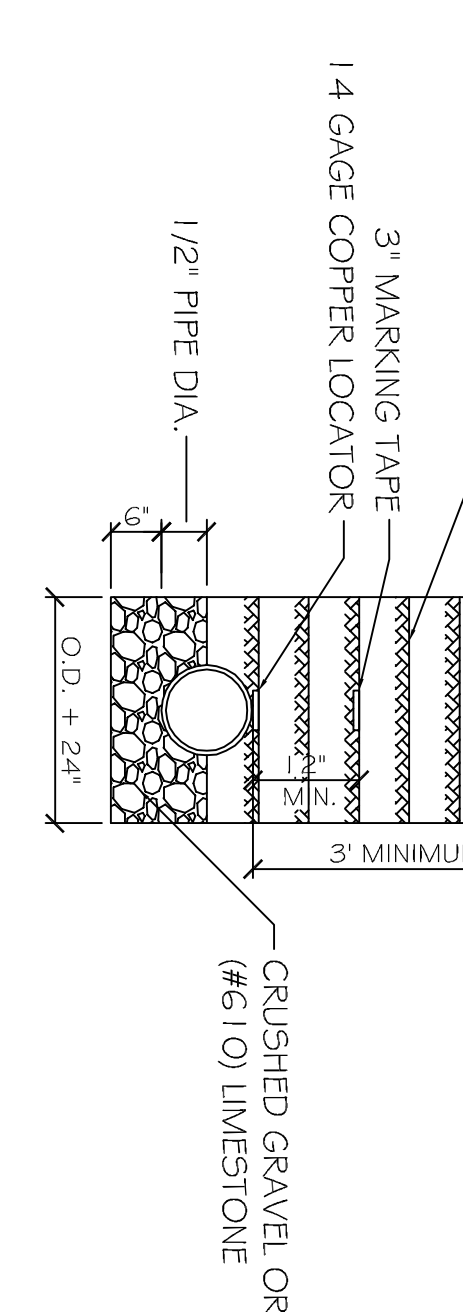
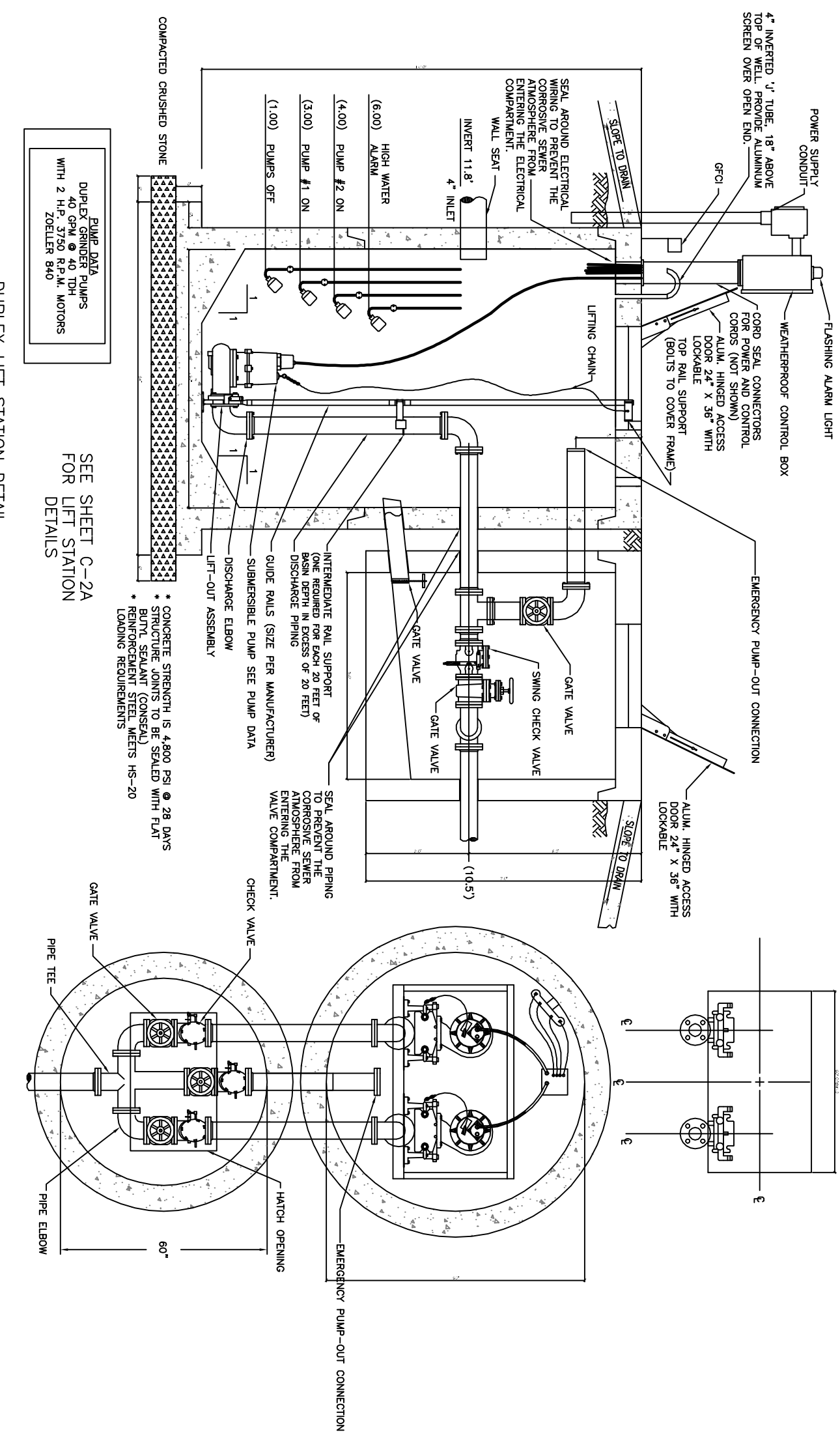


BACKFILL WITH GRANULAR MATERIAL IN 6" LIFTS COMPACTED TO 95% DENSITY (BACKFILL W/ EXIST. ACCEPTABLE MATERIAL W/ APPROVAL OF ENGINEER)

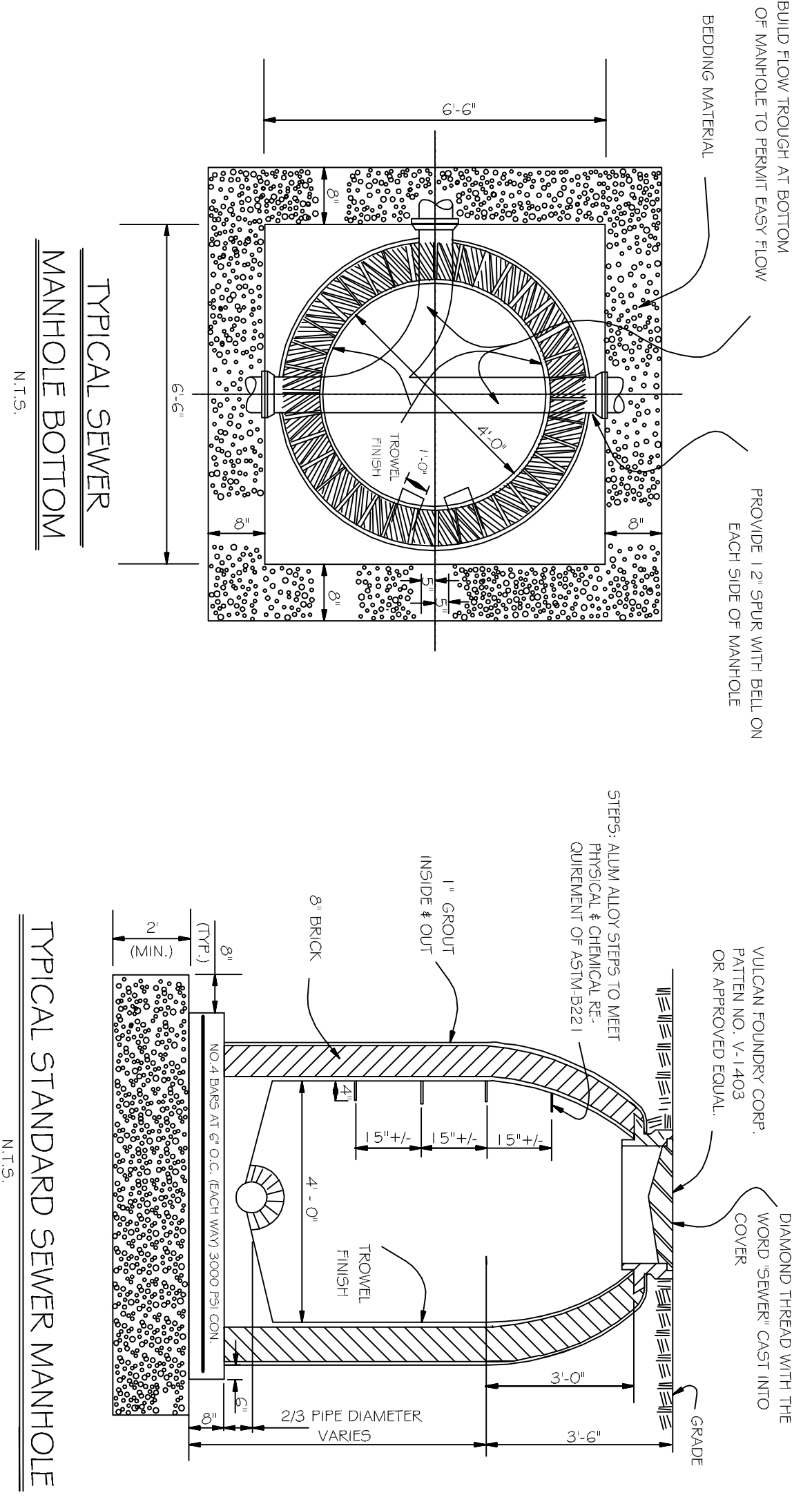


NOTE: A MINIMUM 1'0" HORIZ. AND 1'8" VERT. SEPARATION (WITH WATER MAIN ON TOP) IS REQUIRED BETWEEN WATER AND SEWER LINES.

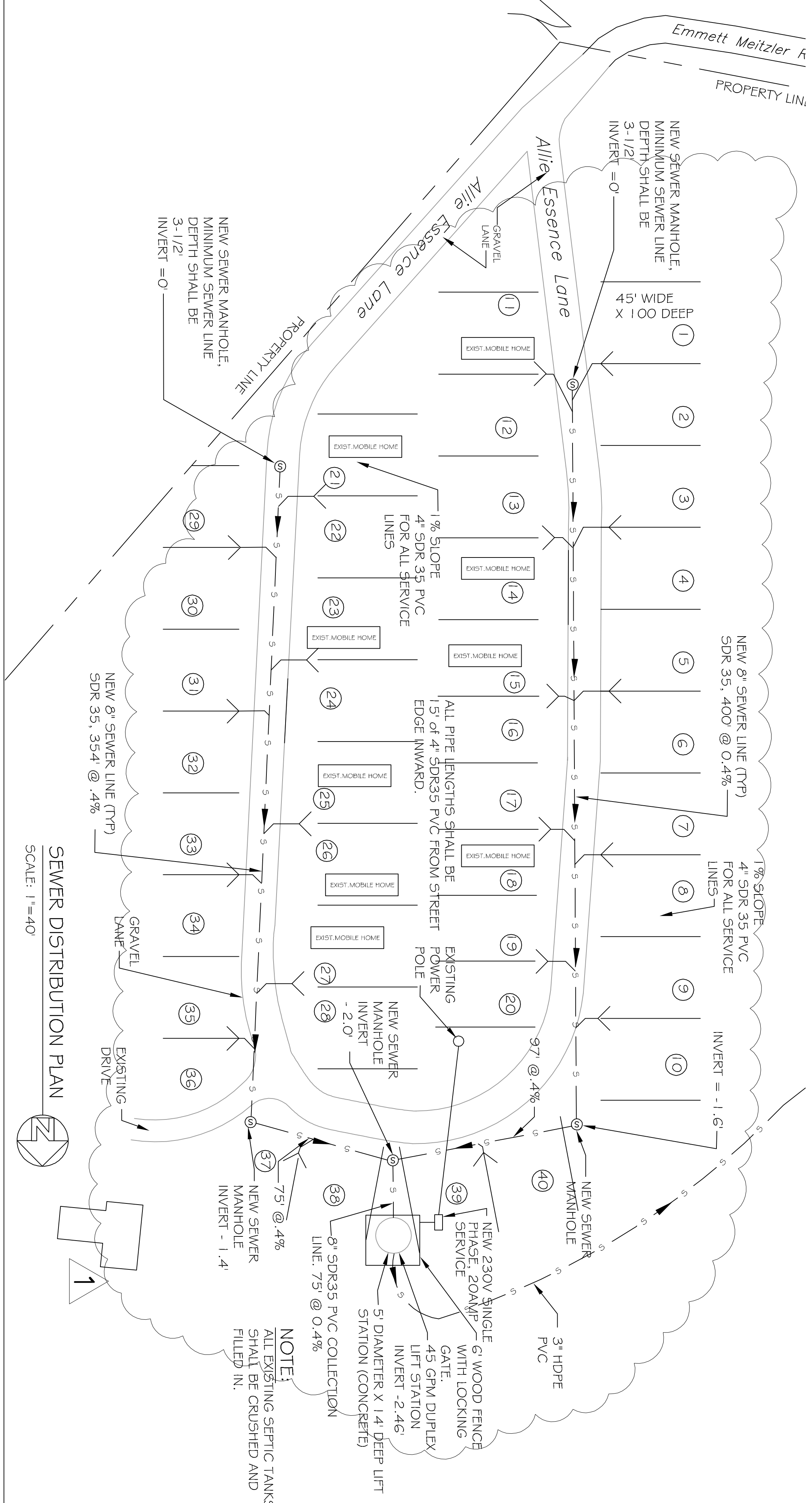
PIPE MAIN BEDDING DETAIL FOR SEWER AND WATER
SCALE: N.T.S.



DUPLEX LIFT STATION DETAIL
SCALE: N.T.S.



EXISTING TRAILER PARK 3.4 ACRE
(ADDITION OF SEWER PUMP STATION/
FORCE MAIN & POTABLE WATER MAIN
TO CONNECT WITH NICHOLSON WATER &
SEWER ASSOCIATION, INC.)



SEWER DISTRIBUTION PLAN
SCALE: 1"=40'

NOTE:

- 1) OWNER SHALL IDENTIFY ALL TRAILER SPACING FOR CONTRACTOR TO LAYOUT SEWER WORK.
- 2) ALL PIPE LENGTHS SHALL BE 15' OF 4" SDR35 PVC FROM STREET EDGE INWARD.

GENERAL NOTES:

1. PROVIDE ALL LABOR, MATERIAL AND EQUIPMENT FOR A COMPLETE OPERATING SYSTEM.
2. ALL WORKS AND MATERIAL SHALL CONFORM STRICTLY TO THE LATEST LOCAL, CITY, COUNTY, STATE AND NATIONAL GOVERNING CODES.
3. CONTRACTOR IS TO FIELD VERIFY ALL EXISTING UTILITY LOCATIONS, ELEVATIONS AND SIZES PRIOR TO COMMENCING ANY WORK. CONTRACTOR SHALL PAY NECESSARY FEES FOR THE UTILITIES CONNECTIONS.
4. CONTRACTOR IS RESPONSIBLE TO SET NEW INVERTS OF SEWERAGE PIPES.
5. 4-INCH SEWER LINES SHALL BE SLOPED 1/8" PER FOOT.
6. TEST ALL PIPING AT REQUIRED PRESSURE.
7. ALL PUMPING SHALL BE CLOSELY COORDINATED WITH WATER SYSTEM.
8. ALL SEWER LINES SHOWN ARE DIAGRAMATIC.
9. ALL SEWER LINES SHOWN ARE DIAGRAMATIC.
10. MINIMUM PIPE BURIAL SHALL BE 3'-0"

LEGEND:

40 DENOTES TRAILER COUNT

NOTE:
ALL EXISTING SEPTIC TANKS SHALL BE CRUSHED AND FILLED IN.

AS-BUILT
07-5-16

REVISIONS		DATE	
#	DESCRIPTION	DATE	
1	RELOCATED SEWER CLOSE TO STREET	07-05-16	

DREAMLAND MOBILE HOME PARK
ALLIE ESSENCE LANE
NICHOLSON, MISSISSIPPI

JOB No: 2182 DATE: 05-19-2014
DRAWN BY: CKD CHECKED BY: BM

CHIEF ENGINEER: BRIAN MISTICH, P.E.
CHIEF ARCHITECT: KEVIN KINCHEN
554 OLD SPANISH TRAIL
SLIDEL, LA 70458

DAMMON ENGINEERING, INC.
Architects & Engineers

dammonengineering.com
dammoneng@bellsouth.net
PHONE: 985-649-5832
FAX: 985-641-5850

SEWER DISTRIBUTION PLAN

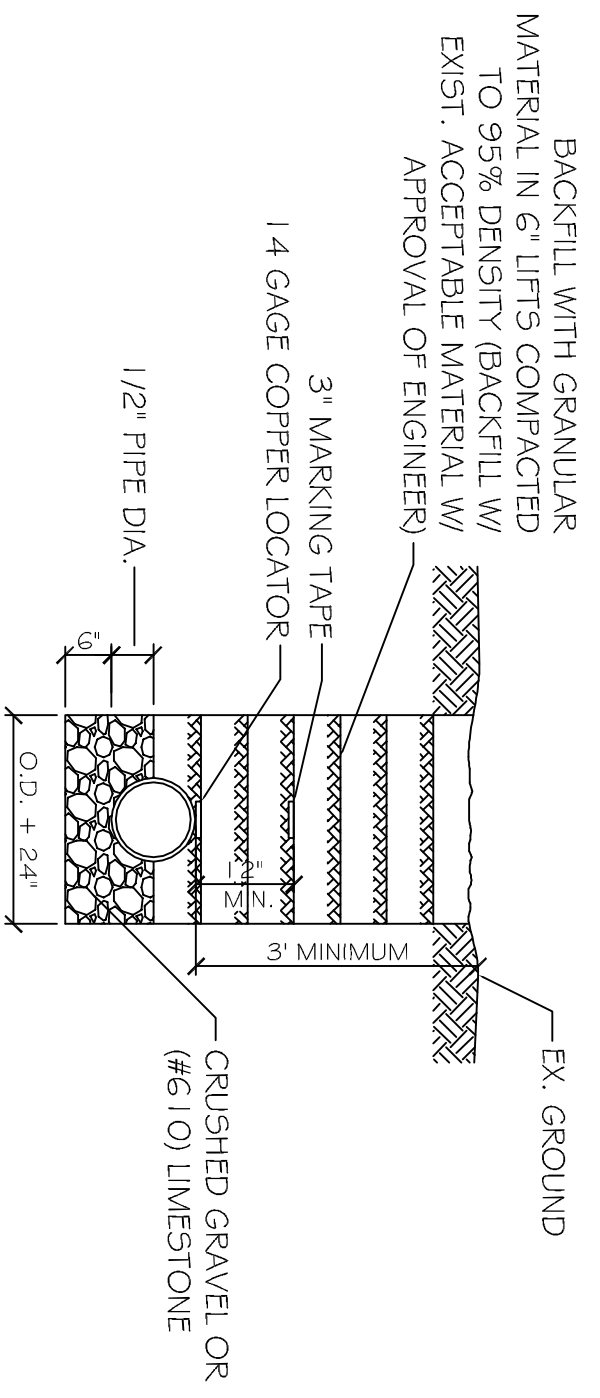
SHEET NO: 02 OF 04

C2

SEWER DISTRIBUTION PLAN

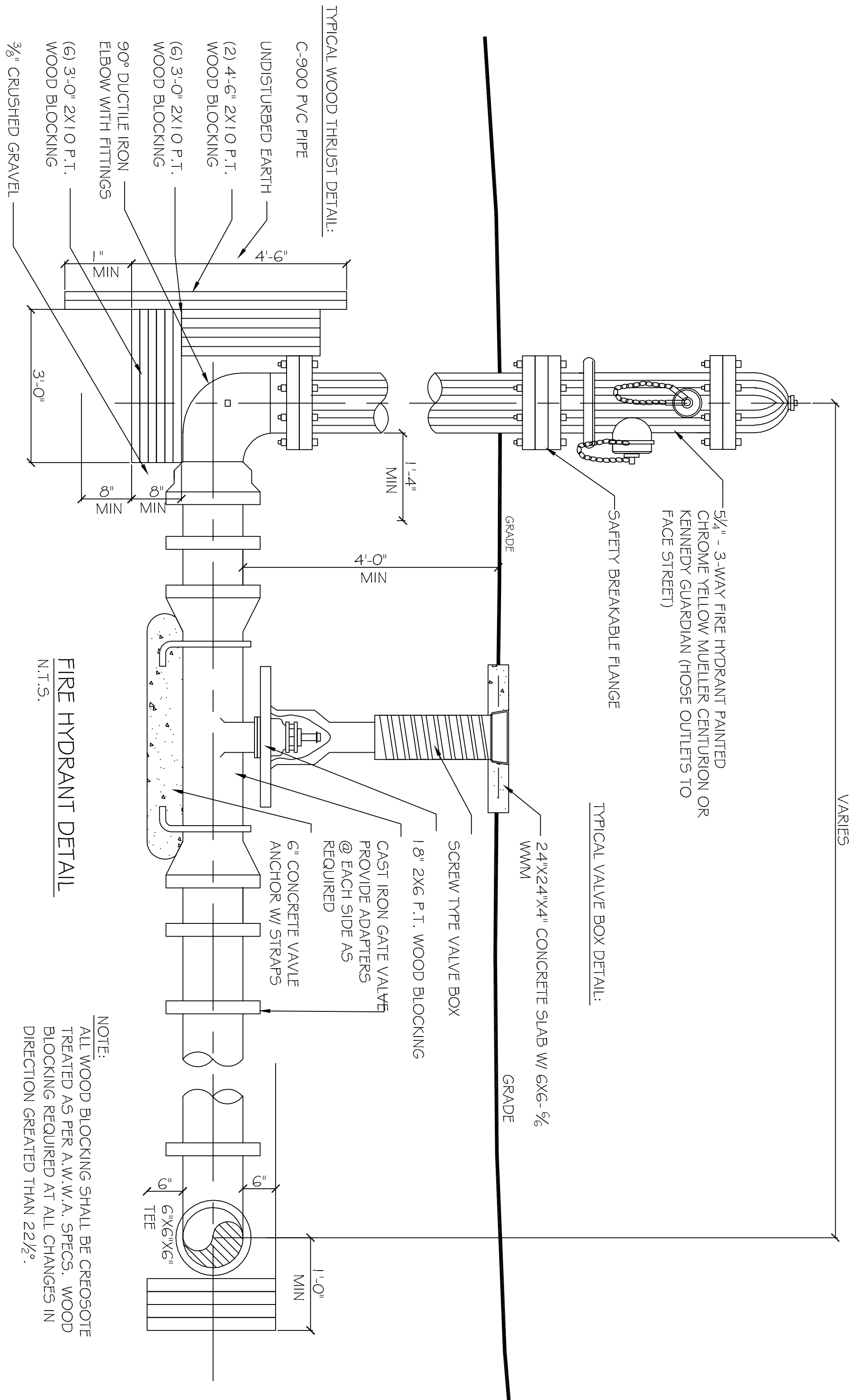
SHEET NO: 02 OF 04

C2



NOTE: A MINIMUM 1'-0\"/>

PIPE MAIN BEDDING DETAIL FOR SEWER AND WATER
SCALE: N.T.S.



NOTE:
ALL WOOD BLOCKING SHALL BE CREOSOTE TREATED AS PER A.W.W.A. SPECS. WOOD BLOCKING REQUIRED AT ALL CHANGES IN DIRECTION GREATER THAN 22 1/2°.

LEGEND:

(40) DENOTES TRAILER COUNT

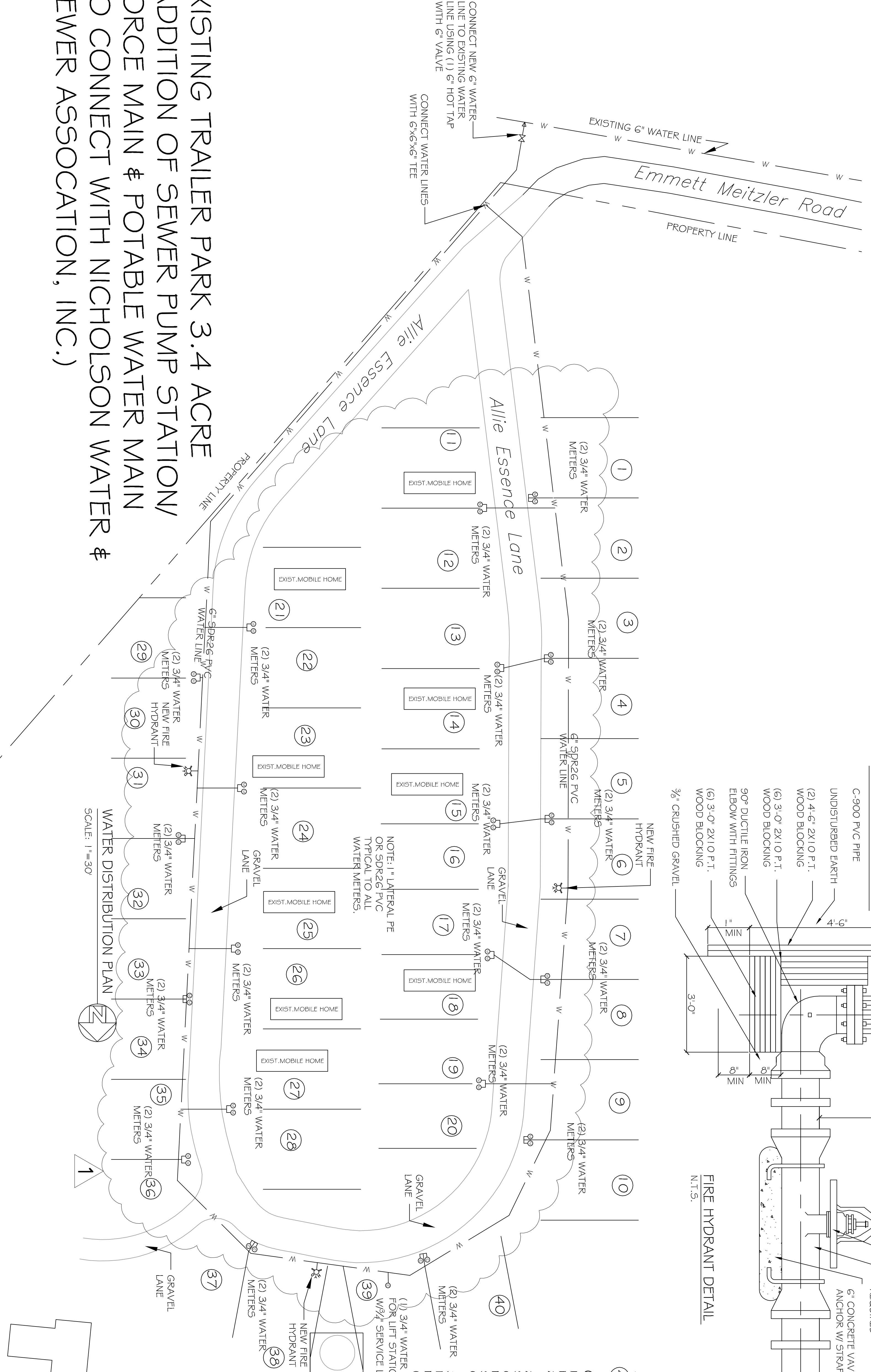
GENERAL NOTE:

1) WATER MAIN SHALL BE DISINFECTED USING A 50MG/L FREE CHLORINE RESIDUAL FOR A CONTACT TIME FOR 24 HOURS.

2) MICROBIOLOGICAL SAMPLES, FROM THE WATER MAINS SHALL BE COLLECTED BY THE REGISTERED ENGINEER, CERTIFIED OPERATOR OR A REPRESENTATIVE OF THE MISSISSIPPI STATE DEPARTMENT OF HEALTH. THE SAMPLES SHALL BE ANALYZED BY THE MISSISSIPPI STATE DEPARTMENT OF HEALTH OR A LABORATORY CERTIFIED BY THE STATE.

3) WATER MAIN SHALL BE SEPARATED FROM SEWER MAINS BY 1'-0\"/>

NOTE: 1\"/>



EXISTING TRAILER PARK 3.4 ACRE
(ADDITION OF SEWER PUMP STATION/
FORCE MAIN & POTABLE WATER MAIN
TO CONNECT WITH NICHOLSON WATER &
SEWER ASSOCIATION, INC.)

SCALE: 1"=30'

AS-BUILT
07-5-16

REVISIONS		
#	DESCRIPTION	DATE
1	RELOCATED WATER METERS CLOSE TO STREET	07-05-16

DREAMLAND MOBILE HOME PARK
ALLIE ESSENCE LANE
NICHOLSON, MISSISSIPPI

JOB No: 2182 DATE: 05-19-2014
DRAWN BY: CKD CHECKED BY: BM

The above drawings and specifications, design and arrangements represented hereby, are and shall remain the property of Dammon Engineering, Inc. and shall not be copied, altered, or reproduced in any form without the prior written consent of Dammon Engineering, Inc. This drawing is for the specific project for which the name has been prepared and does not constitute a contract. Dammon Engineering, Inc. shall not be held liable for any errors or omissions on this drawing or specifications that constitute complete evidence of acceptance of their resolution.

DAMMON ENGINEERING, INC.
Architects & Engineers

CHIEF ENGINEER: BRIAN MISTICH, P.E.
CHIEF ARCHITECT: KEVIN KINCHEN
554 OLD SPANISH TRAIL
SLIDELAND, LA 70458

dammonengineering.com
dammoneng@bellsouth.net
PHONE: 985-649-5832
FAX: 985-641-5450

WATER DISTRIBUTION PLAN

SHEET No: 04 OF 04

C3