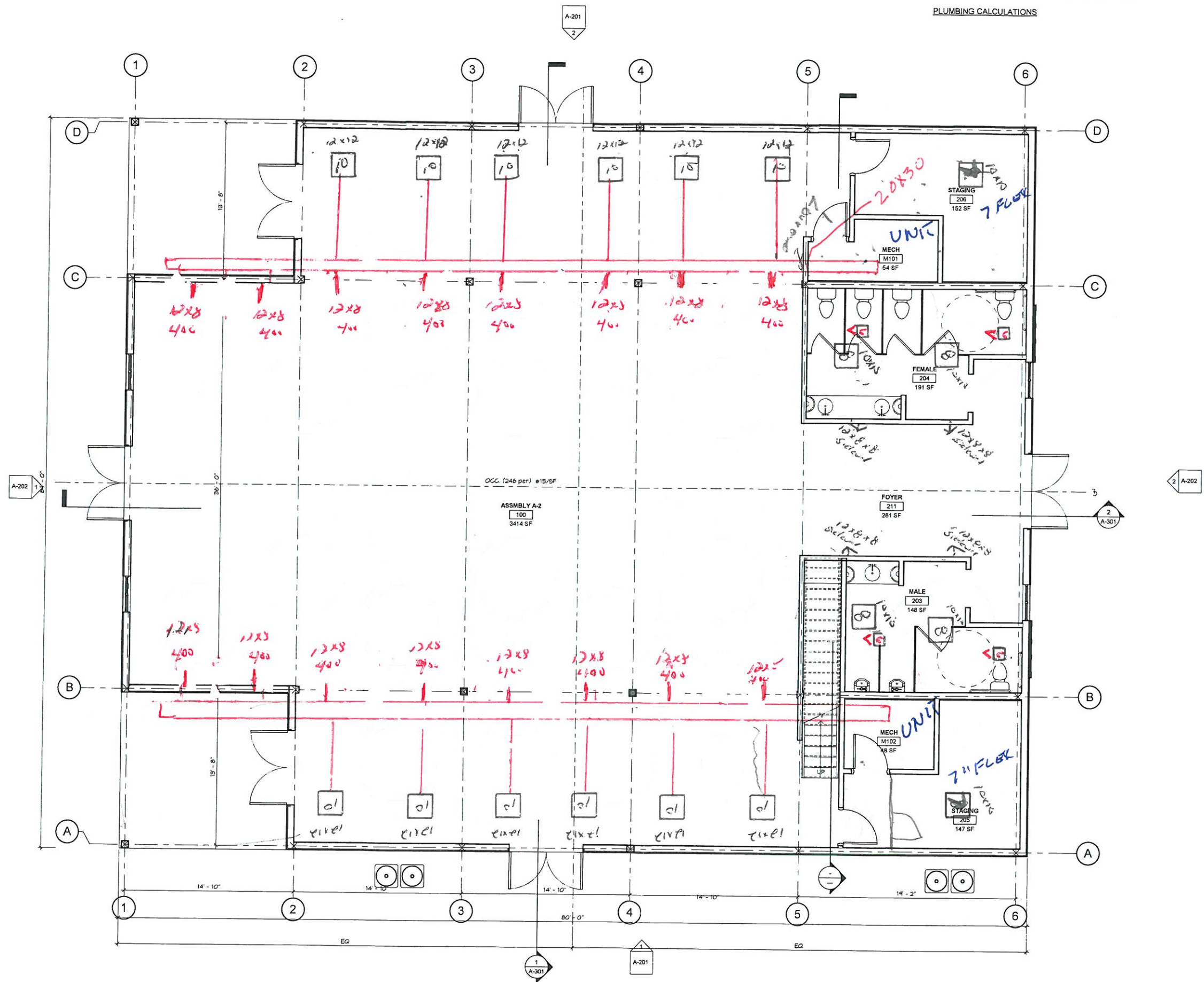




© THIS SET OF DOCUMENTS INCLUSIVE OF DRAWINGS, SPECIFICATIONS, AND ADDENDUMS MAY NOT BE COPIED, SCANNED, NOR ELECTRONICALLY DISTRIBUTED OR USED FOR CONSTRUCTION WITHOUT THE EXPRESSED WRITTEN CONSENT OF GRACEHEBERT ARCHITECTS, APAC. NO PLAN ROOM, ELECTRONIC PLAN SERVICE OR PRINT PLAN SERVICE, NOR REPRODUCTION COMPANY SHALL BE PERMITTED TO POST THESE DOCUMENTS WITHOUT THE EXPRESSED WRITTEN CONSENT OF THE ARCHITECT. GRACEHEBERT ARCHITECTS, APAC 501 GOVERNMENT STREET # B BATON ROUGE, LA 70002 P.225.538.5544 F.225.538.5539



PINEWOOD WEDDING VENUE

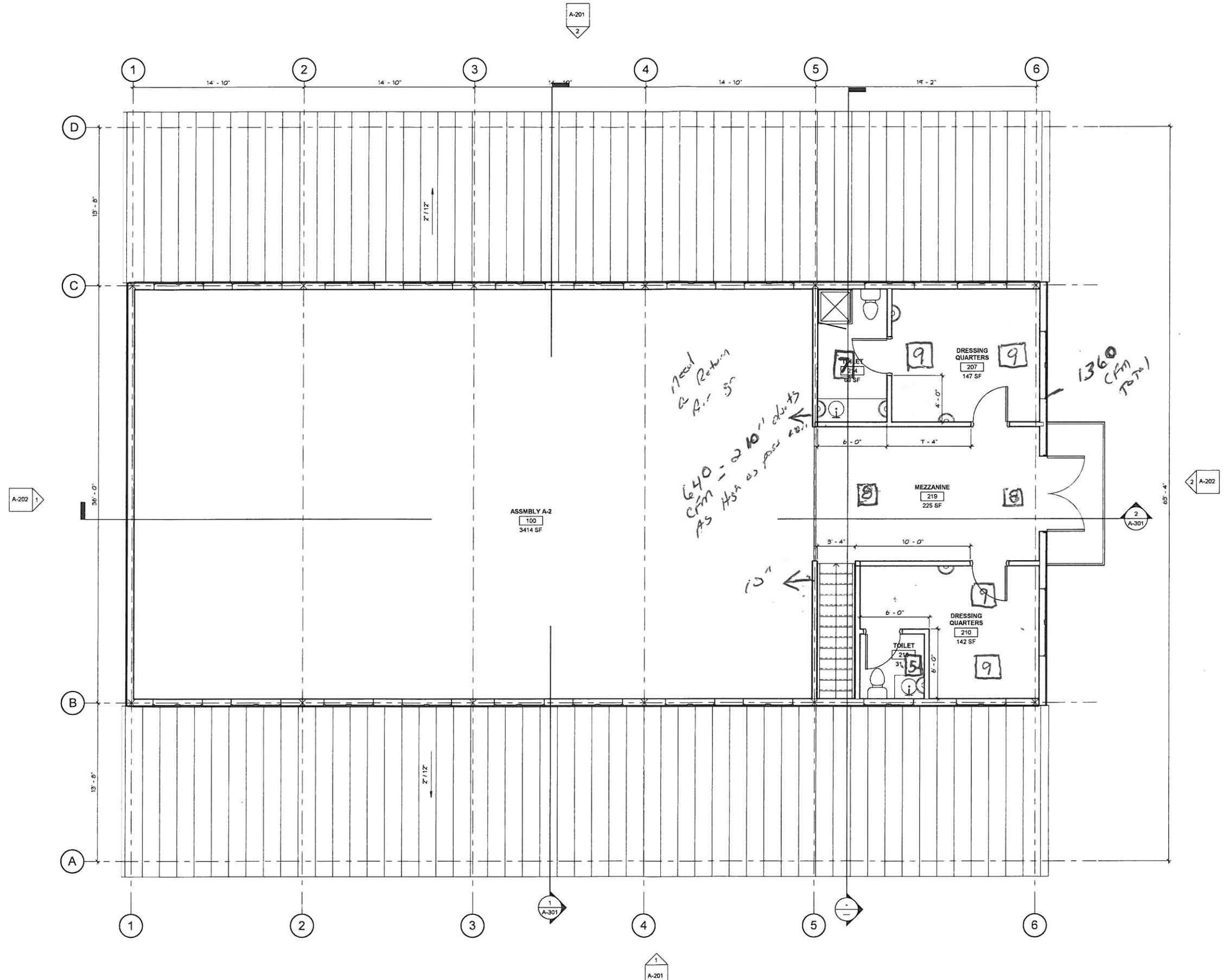
K.B. KAUFMANN & CO
405 COUNTRY CLUB BOULEVARD SUITE 100, LA 70458

DATE	08/09/17
PHASE	50% CONSTRUCTION
ISSUED FOR	DOCUMENTS
PROJECT NO.	211726

1 1ST FLOOR PLAN
1/4" = 1'-0"

FLOOR PLAN

THIS SET OF DOCUMENTS INCLUDES DRAWINGS, SPECIFICATIONS AND ADDENDUMS. THESE DOCUMENTS MAY NOT BE COPIED, REPRODUCED, REPRODUCED OR TRANSMITTED IN ANY FORM OR BY ANY MEANS, ELECTRONIC OR MECHANICAL, INCLUDING PHOTOCOPYING, RECORDING, OR BY ANY INFORMATION STORAGE AND RETRIEVAL SYSTEM, WITHOUT THE EXPRESS WRITTEN PERMISSION OF GRACEHEBERT ARCHITECTS, P.A. NO PLAN BOOK OR ELECTRONIC PLAN SERVICE (INTERNET PLAN SERVICE) NOR REPRODUCTION COMPANY SHALL BE PERMITTED TO POST THESE DOCUMENTS WITHOUT THE EXPRESS WRITTEN PERMISSION OF THE ARCHITECT. GRACEHEBERT ARCHITECTS, P.A. 301 GOVERNMENT STREET • BATON ROUGE, LA 70802 P-225.334.3361 F-225.334.3370



PINEWOOD WEDDING VENUE

K.B. KAUFMANN & CO
405 COUNTRY CLUB BOULEVARD SLIDELL, LA 70458

DATE	08/09/17
PHASE	50% CONSTRUCTION
ISSUED FOR	DOCUMENTS
PROJECT NO	211726

MEZZANINE PLAN

1 MEZZANINE FLOOR PLAN
1/4" = 1'-0"