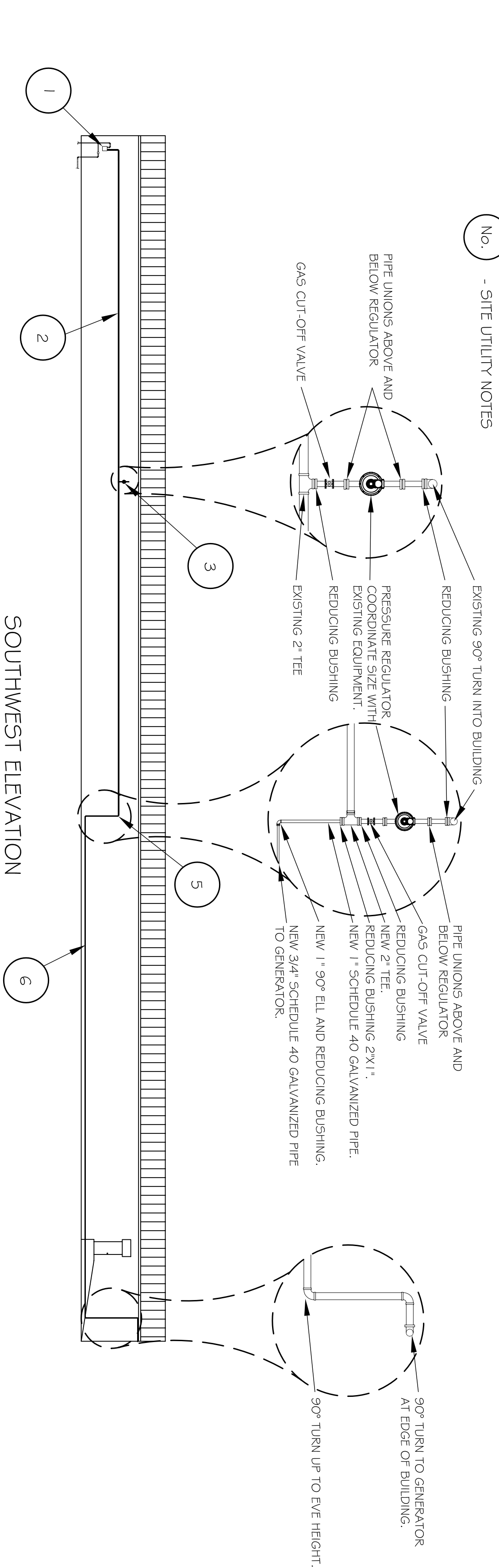
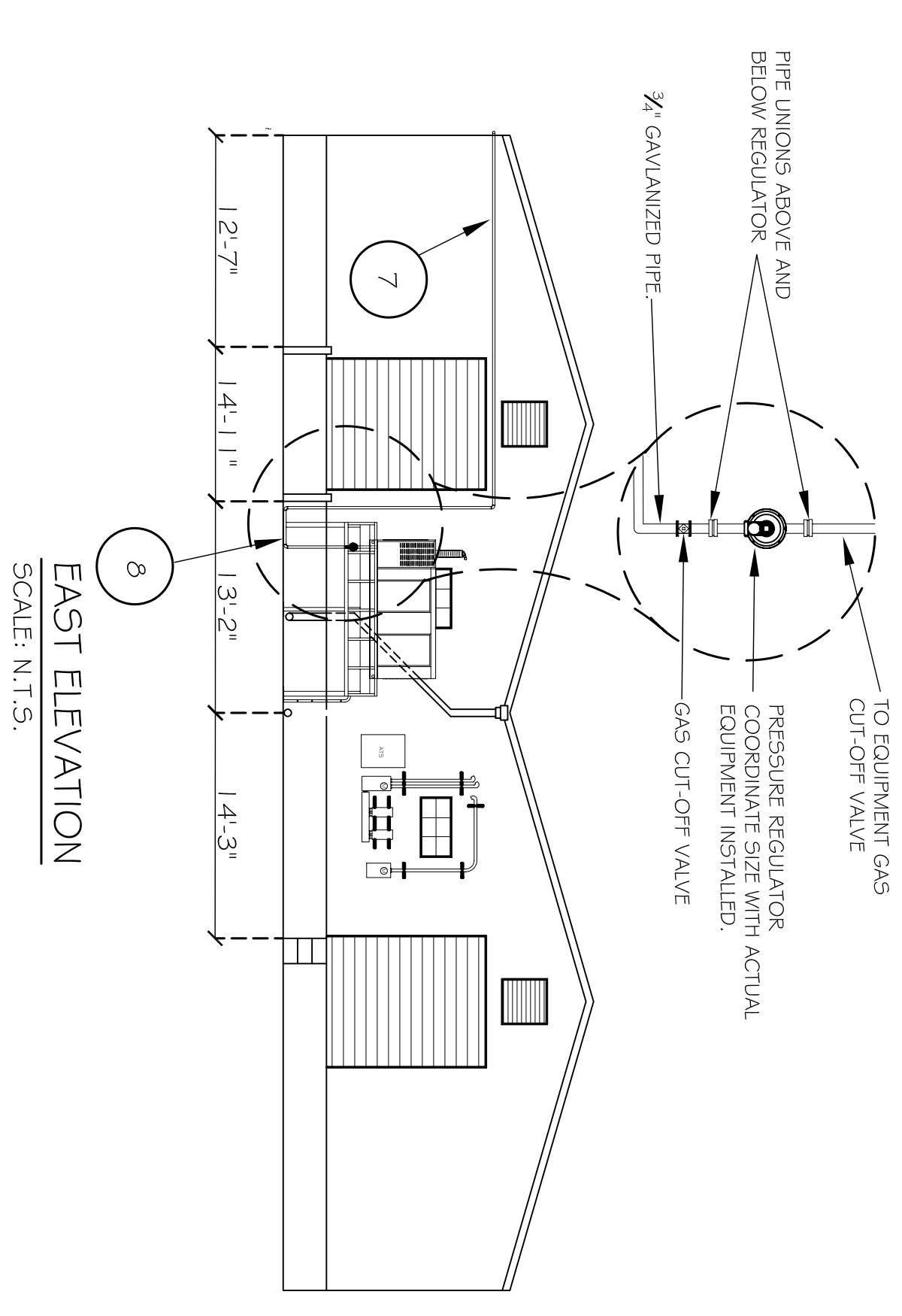


SITE UTILITY PLAN
SCALE: N.T.S.

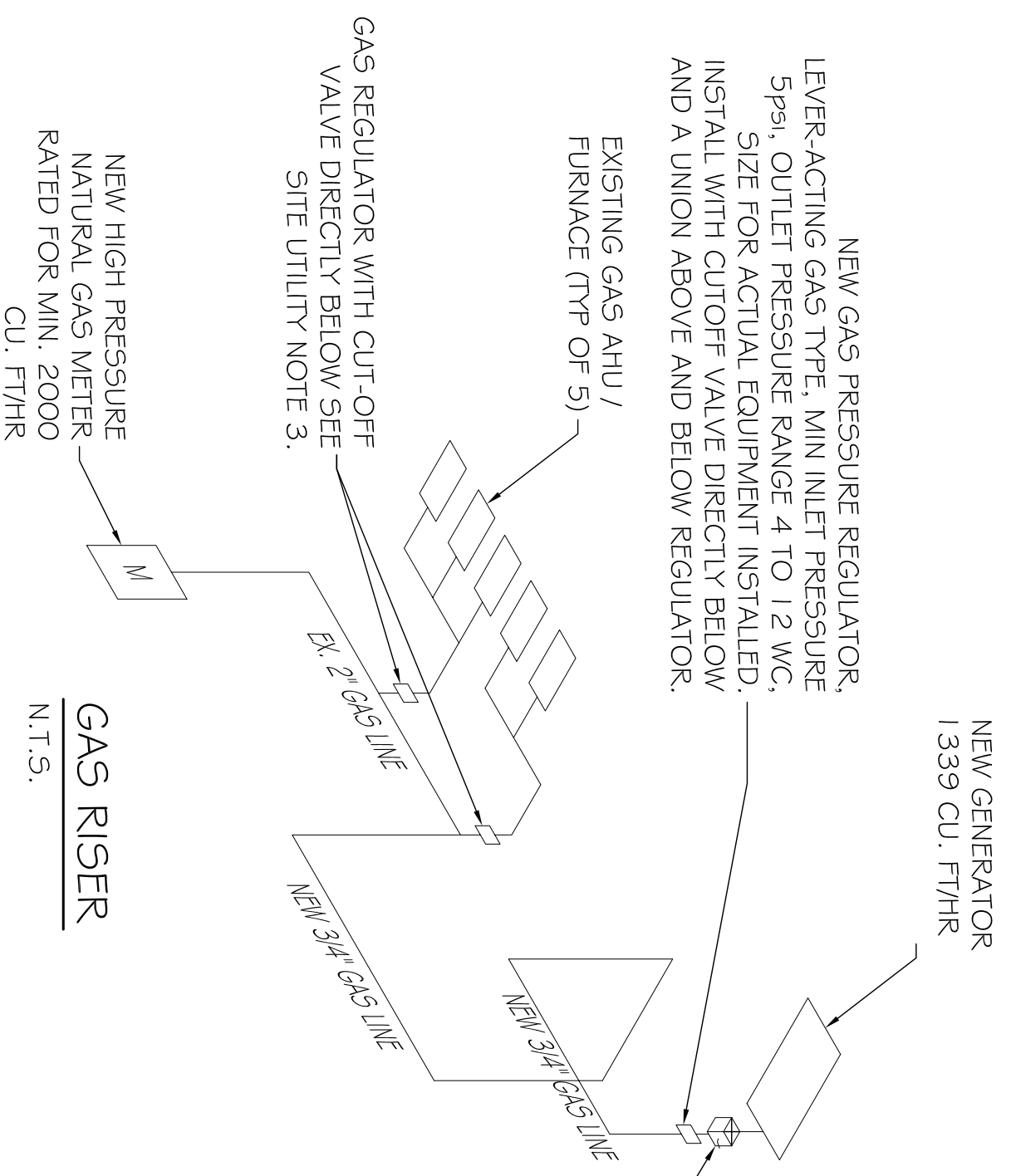
- LEGEND**
- PROPERTY LINE
 - - - - - SETBACK
 - NEW BUILDING OUTLINE
 - (No.) - SITE UTILITY NOTES



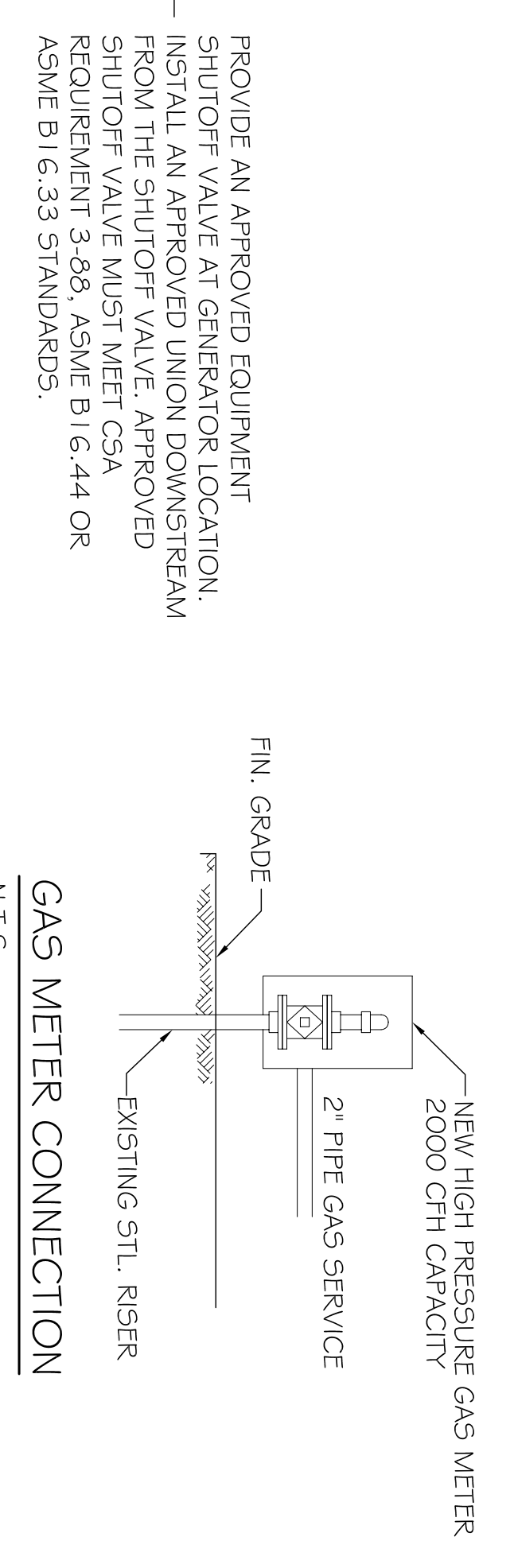
SOUTHWEST ELEVATION
SCALE: N.T.S.



EAST ELEVATION
SCALE: N.T.S.



GAS RISER
N.T.S.

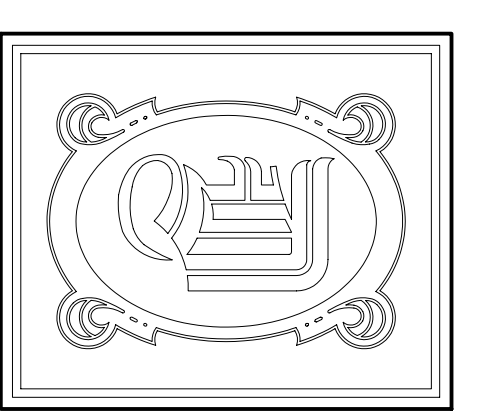


GAS METER CONNECTION
N.T.S.

SITE UTILITY NOTES	
No.	DESCRIPTION
1	EXISTING NATURAL GAS SERVICE. REMOVE EXISTING PRESSURE REGULATOR AND LOW PRESSURE GAS METER. INSTALL NEW HIGH PRESSURE GAS METER AND PIPE AS REQUIRED.
2	EXISTING 2" PIPE TO REMAIN AND BE UTILIZED FOR NEW NATURAL GAS SERVICE.
3	INSTALL PRESSURE REGULATOR AT EXTERIOR OF BUILDING FOR FURNACE CONNECTIONS TO GAS LINE. CONTRACTOR TO COORDINATE SIZE AND ACTUAL LOCATION OF EQUIPMENT.
4	EXISTING GAS HEATED FURNACES LOCATED IN CEILING TO REMAIN. CONTRACTOR TO COORDINATE CONNECTION TO NEW GAS SERVICE.
5	INSTALL PRESSURE REGULATOR GOING UP INTO BUILDING WITH A 2" TEE. CONTRACTOR TO COORDINATE SIZE AND ACTUAL LOCATION OF EQUIPMENT. INSTALL NEW 1" SCHEDULE 40 GALVANIZED PIPING FROM THE DOWNSIDE OF THE TEE FOR A MINIMUM OF 6 FT THEN INSTALL 3/4" SCHEDULE 40 GALVANIZED PIPING TO GENERATOR.
6	DEMO EXISTING PIPING TO EXISTING GENERATOR. INSTALL CAP AT TEE SECTION.
7	INSTALL NEW 3/4" SCHEDULE 40 GALVANIZED PIPING, RUN PARALLEL TO EXISTING 2" GAS PIPE UNTIL IT PENETRATES BUILDING. TURN THE NEW 3/4" GAS PIPE UP TO THE ROOF LINE. PIPING SHALL BE SUPPORTED BY STAINLESS STEEL U-CLAMPS CONFORMING WITH THE REQUIREMENTS OF MSS SP-58. WHEN SUPPORTED BY METAL BUILDING USE 2 #14 SELF-TAPPING SHEET METAL SCREWS AND WHEN SUPPORTED BY CONCRETE USE 2 #4 WEDGE ANCHORS AND UNISTRUT WITH A MAX. SUPPORT INTERVAL OF 10 HORIZONTAL AND 12 VERTICAL OR AS REQUIRED BY MANUFACTURERS REQUIREMENTS.
8	LOCATION OF NEW NATURAL GAS POWERED 100KW GENERATOR. INSTALL NEW GAS SERVICE CONNECTION AND REGULATOR AS REQUIRED BY MANUFACTURER.

PLUMBING GENERAL NOTES:

1. WHEN GAS PIPING IS TO BE OPENED FOR SERVICING, ADDITION, OR MODIFICATION, THE SECTION TO BE WORKED ON SHALL BE TURNED OFF FROM THE GAS SUPPLY AT THE NEAREST CONVENIENT POINT, AND THE LINE PRESSURE VENTED TO OUTDOORS. THE REMAINING GAS SHALL BE DISPLACED WITH AN INERT GAS AS REQUIRED.
2. ATTACH ALL PIPES TO BUILDING STRUCTURE TO WITHSTAND 130 MPH WIND.
3. PROVIDE ALL LABOR, MATERIAL AND EQUIPMENT FOR A COMPLETE OPERATING SYSTEM. THE SYSTEM SHALL INCLUDE HANGERS, VALVES AND SUPPORTS WITHOUT ANY RESTRICTIONS TO VOLUME. CUT AND PATCH AS REQUIRED TO INSTALL PIPES.
4. ALL WORK AND MATERIAL SHALL CONFORM STRICTLY TO THE LATEST LOCAL CITY, PARISH, STATE AND NATIONAL GOVERNING CODES.
5. CONTRACTOR IS TO FIELD VERIFY ALL EXISTING UTILITY LOCATIONS, ELEVATIONS AND SIZES PRIOR TO COMMENCING ANY WORK.
6. ALL PIPING MUST BE INSPECTED AND TESTED AT REQUIRED PRESSURE FROM THE NEW METER TO THE NEW GENERATOR USING AN APPROVED METHOD.
7. CONTRACTOR SHALL UPGRADE THE NATURAL GAS SERVICE TO MEET THE SERVICE DEMANDS OF THE NEW GENERATOR.
8. CONTRACTOR SHALL COORDINATE HIS WORK WITH OTHER TRADES AND WITH OTHER CONTRACTORS WHOSE WORK MAY AFFECT THIS INSTALLATION.
9. ALL METALLIC PIPE SHALL HAVE SMOOTH BENDS FREE OF BUCKLING AND SHALL ONLY BE MADE USING BENDING TOOLS SPECIFICALLY FOR THAT USE.
10. ALL METALLIC PIPE BENDS SHALL NOT EXCEED 90° WITH THE INSIDE BENDING RADIUS NOT LESS THAN SIX TIMES THE OUTSIDE DIAMETER OF THE PIPE.
11. PRIOR TO TURNING THE GAS ON, ALL NEW PIPING WILL BE PURGED WITH AN INERT GAS AND THE ENTIRE SYSTEM WILL BE VISUALLY INSPECTED FOR ANY OPEN FITTINGS AND THAT CUT-OFF VALVES AT EACH EQUIPMENT LOCATION ARE CLOSED.
12. ALL METALLIC PIPE SHALL BE A MIN. STANDARD OF SCH. 40 AND SHALL COMPLY WITH ONE OF THE FOLLOWING STANDARDS. ASME B 36.10, 10W; ASTM A 53; ASTM A 106.



DAMMON ENGINEERING, INC.
 CHIEF ENGINEER
 ENAMETT DAMMON, P.E.
 CHIEF ARCHITECT
 ROBERT WILTSE
 1095 FLORIDA AVENUE
 SUDELL, LA, 70450
 OFFICE: 985-649-5832
 FAX: 985-641-5950
 WEBSITE: WWW.DAMMONENGINEERING.COM
 EMAIL: DAMMONENG@BELL-SOUTH.NET

ARCHITECTURE
 ENGINEERING
 STUDIES
 PLANNING
 INVESTIGATION
 EXPERT WITNESS

GAMBIT COMMUNICATIONS
 3923 BIENVILLE AVE.
 NEW ORLEANS, LA

PLUMBING PLAN

REV:
 SCALE: AS NOTED
 JOB#: 2080
 DATE: 10-15-2010
 SHEET 2
P-1
 OF 3