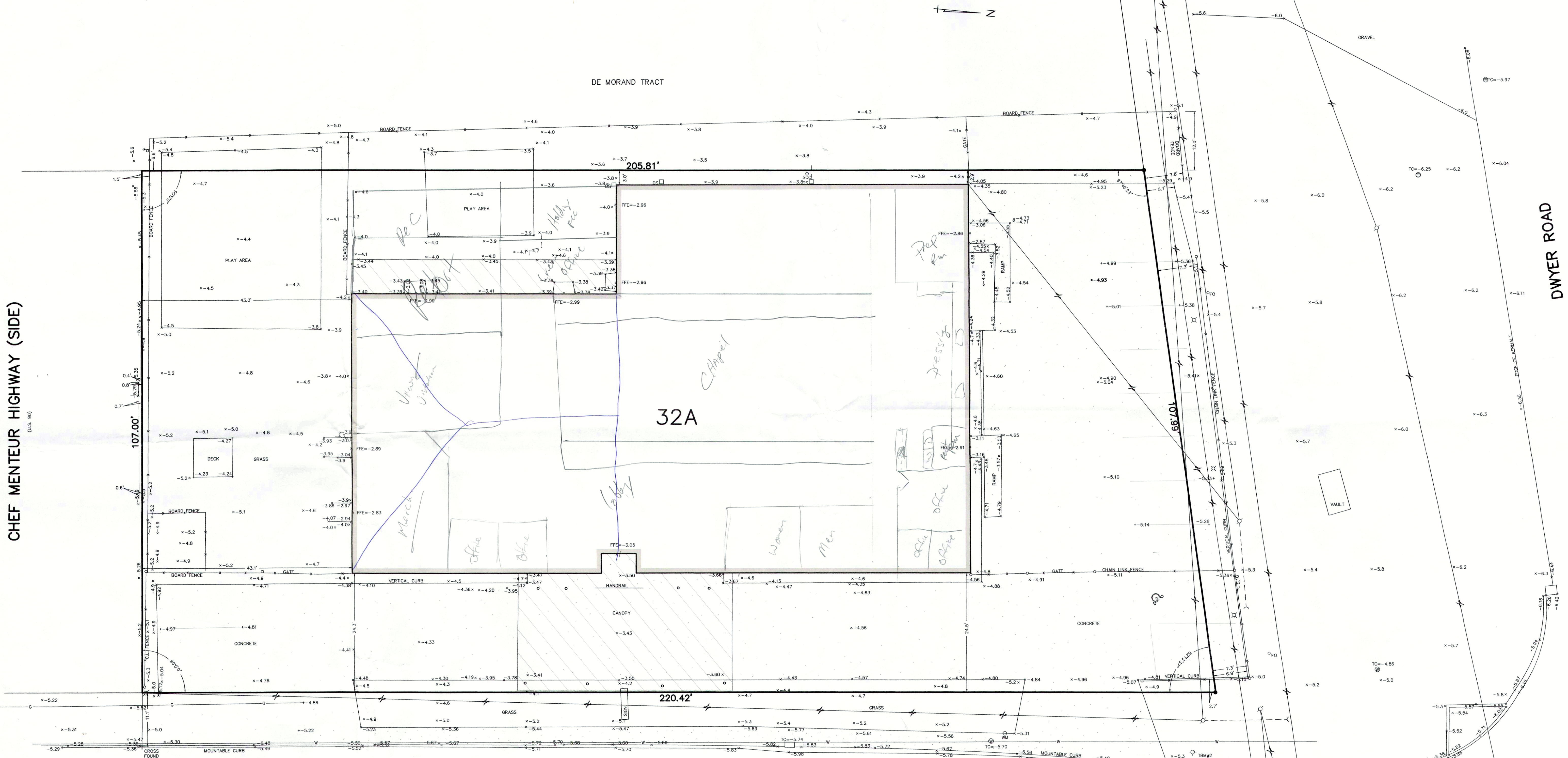


SQUARE H  
DOWNMAN ROAD SUBDIVISION  
THIRD DISTRICT, NEW ORLEANS  
ORLEANS PARISH, LOUISIANA



CHEF MENTEUR HIGHWAY (SIDE)  
(U.S. HW)

DWYER ROAD

DOWNMAN ROAD  
(65' R/W)

- LEGEND**
- OVERHEAD UTILITY LINES
  - SEWER LINE
  - GAS LINE
  - WATER LINE
  - COMMUNICATION LINE
  - CATCH BASIN
  - DOWNSPOUT
  - SEWER MANHOLE
  - SEWER CLEANOUT
  - WATER MANHOLE
  - WATER METER
  - FIRE HYDRANT
  - FIBER OPTIC POST
  - POWER POLE
  - ANCHOR/GUY WIRE
  - LIGHT POLE
  - BOLLARD

ALL ELEVATIONS ARE IN FEET NAVD88(2009.55)  
BASED ON GPS OBSERVATIONS (GEOID12B)

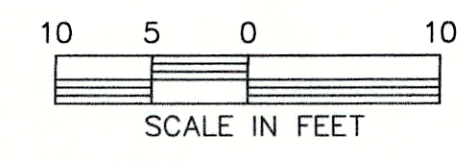
THIS PROPERTY IS IN FEMA ZONE X, BFE= N/A  
COMMUNITY NO. 225203, PANEL NO. 0119F  
FIRM DATE: SEPTEMBER 30, 2016

- TBM#1: FIRE HYDRANT AT LEFT FRONT CORNER OF LOT 32A  
ELEV.: -1.68 NAVD
- TBM#2: FIRE HYDRANT AT FRONT RIGHT CORNER OF LOT 32A  
ELEV.: -3.46 NAVD

REFERENCE:  
— SURVEY BY DADING, MARQUES & ASSOCIATES  
DATED JULY 13, 1999

The locations of underground and other nonvisible utilities shown hereon have been determined from data either furnished by the agencies controlling such data and/or extracted from records made available to us by the agencies controlling such records. Where found, the surface features of locations are shown. The actual nonvisible locations may vary from those shown hereon. Each agency should be contacted relative to the precise location of its underground installation prior to any reliance upon the accuracy of such locations shown hereon, including prior to excavation and digging.

THE SERVICES AND RESTRICTIONS SHOWN ON THIS SURVEY ARE LIMITED TO THOSE SET FORTH IN THE DESCRIPTION FURNISHED TO US, AND THERE IS NO REPRESENTATION THAT ALL APPLICABLE SERVICES AND RESTRICTIONS ARE SHOWN HEREON. THE SURVEYOR HAS MADE NO TITLE SEARCH OR PUBLIC RECORD SEARCH IN COMPILING THE DATA FOR THIS SURVEY.



APRIL 15, 2019  
SURVEYED IN ACCORDANCE WITH THE LOUISIANA STANDARDS  
OF PRACTICE FOR BOUNDARY SURVEYS FOR A CLASS C SURVEY,  
MADE AT THE REQUEST OF BOYD FAMILY FUNERAL HOME

**PRELIMINARY**

THIS DOCUMENT IS NOT TO BE USED FOR CONSTRUCTION,  
BIDDING, RECORDATION, CONVEYANCE, SALES, OR AS THE  
BASIS FOR THE ISSUANCE OF A PERMIT.  
TILDON J. DUFRENE JR., PE 18887, PLS 04563

**DUFRENE SURVEYING  
& ENGINEERING INC.**  
1624 MANHATTAN BOULEVARD, HARVEY, LA 70058  
504-368-6360 FAX  
504-368-6394 FAX  
du@frene.com frene@frene.com