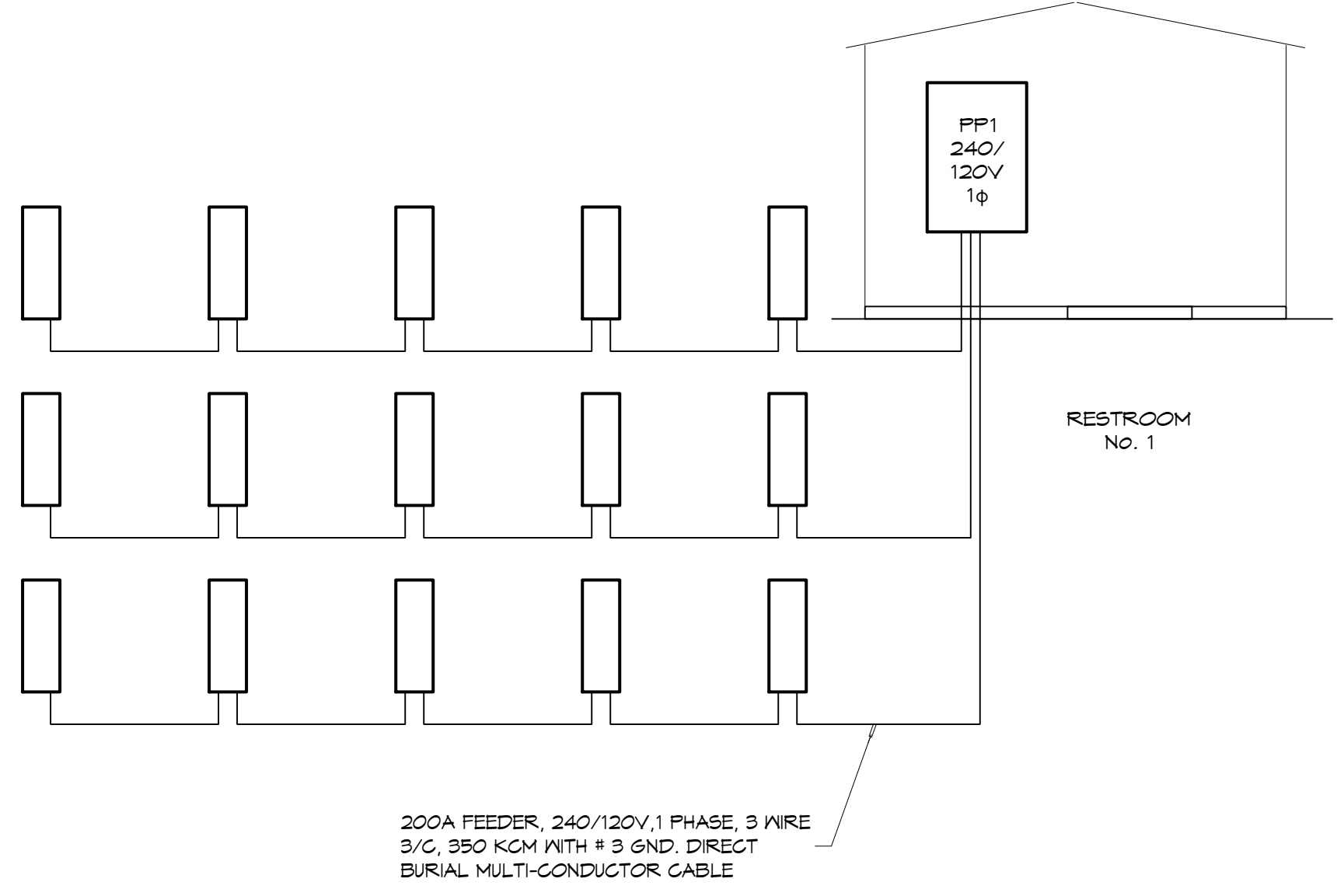
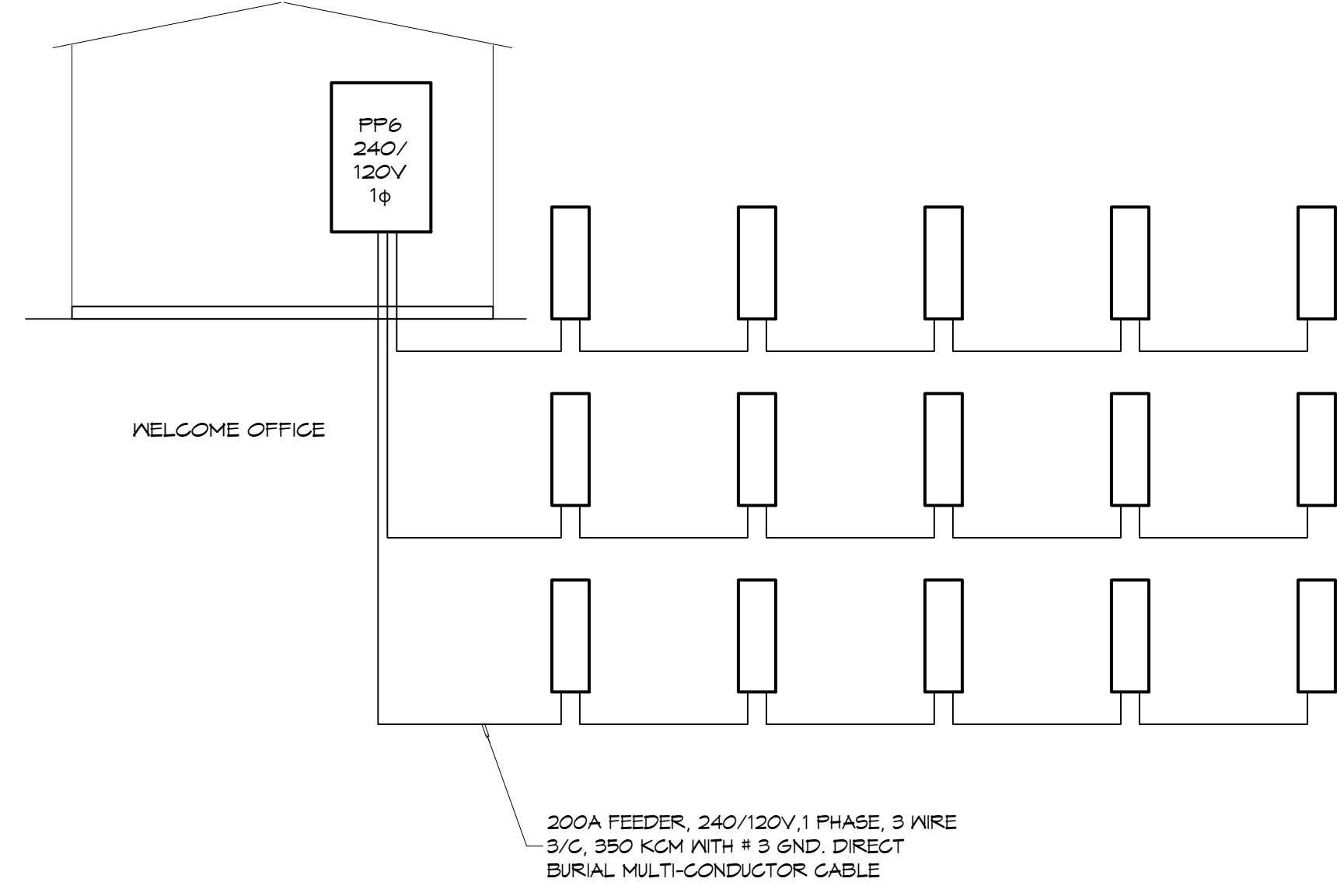


ELECTRICAL LOAD SUMMARY TRANSFORMER 1					
POWER COMPANY:	COAST ELECTRIC				
PROJECT NAME:	EXIT 1 RV RESORT				
PROJECT ADDRESS:	CLYDE MEITZIER				
CITY TOWN:	NICHOLSON, MISSISSIPPI				
INTENDED USER:	RV PARK				
REQUIRED SERVICE:	240/120 VOLTS	1 PHASE	3 WIRE		
SERV ENTR SIZE:	400 AMPS				
HVAC TONNAGE:	TONS				
LARGEST MOTOR:	HP				
LOAD SOURCE	10KVA	30KVA	OR	10KW	30KW
BUILDING LIGHTING	1,360.0				
ELECTRIC WATER HEATING	10,000.0				
HEAT PUMPS					
SUPPLEMENTAL HEAT SYSTEMS					
AIR COND CONDENSING UNITS					
ELEC HEATING (PRIMARY) AHUS					
COOKING					
REFRIGERATION					
RECEPTACLES (STANDARD)	1,080.0				
RECEPTACLES (COMPUTER)					
TOTAL MOTORS (EXCLUDE HVAC)					
EXTERIOR LIGHTING	500.0				
MISCELLANEOUS - CEILING FANS	6,500.0				
OTHER - 15 RV SITES	144,000.0				
TOTAL CONNECTED LOAD	163,440.0				



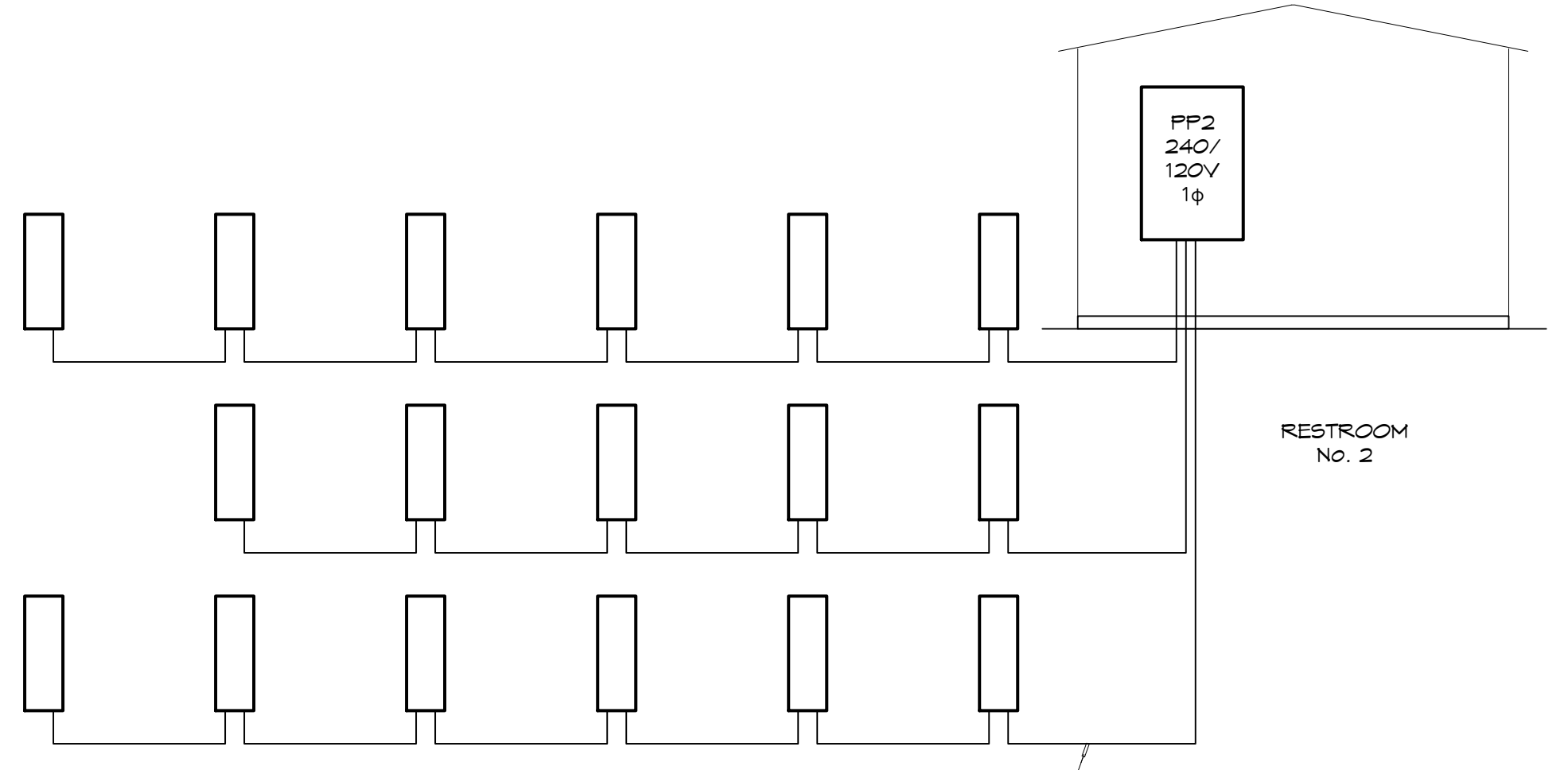
200A FEEDER, 240/120V, 1 PHASE, 3 WIRE
3/0, 350 KCM WITH # 3 GND, DIRECT
BURIAL MULTI-CONDUCTOR CABLE



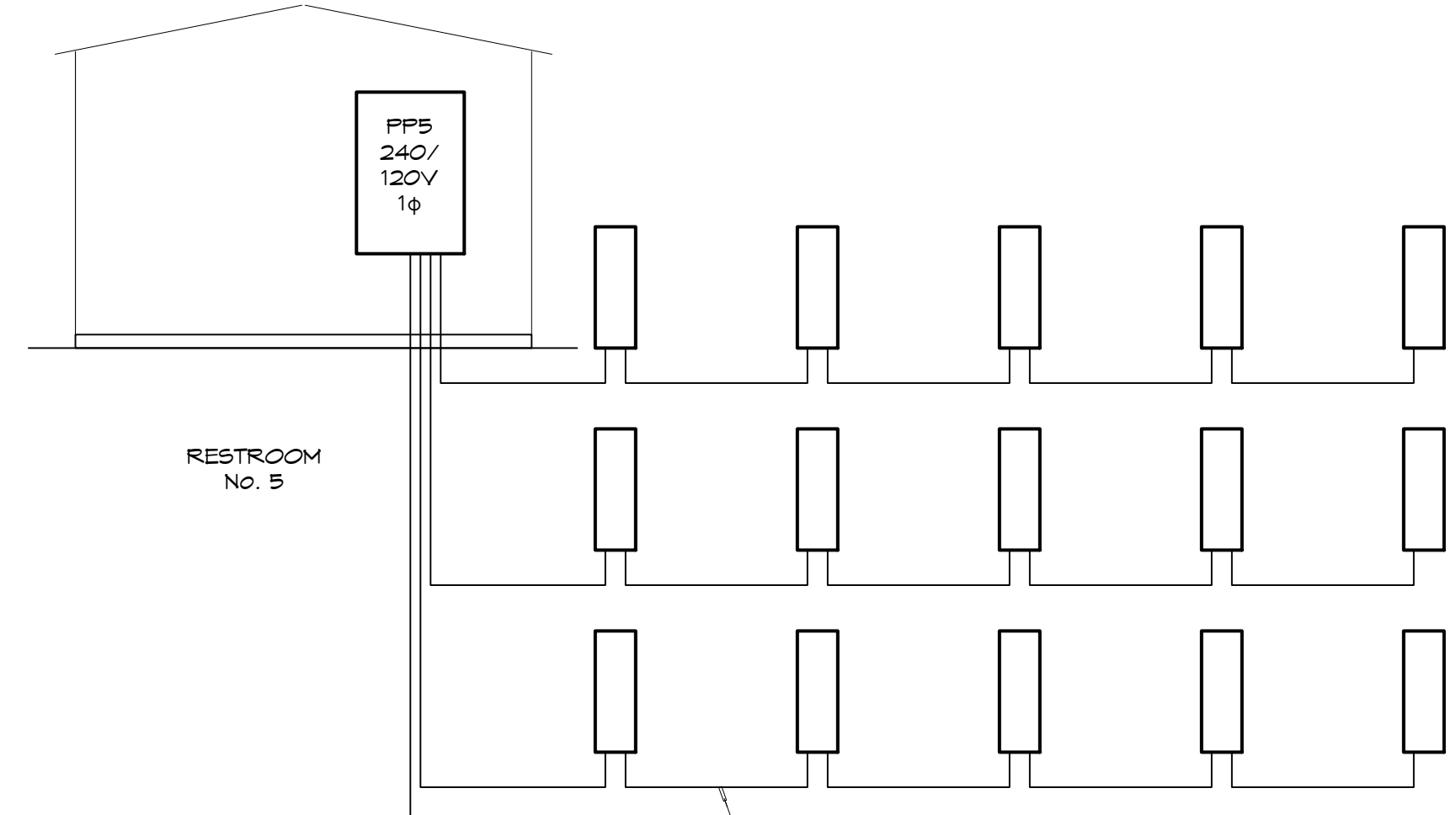
200A FEEDER, 240/120V, 1 PHASE, 3 WIRE
3/0, 350 KCM WITH # 3 GND, DIRECT
BURIAL MULTI-CONDUCTOR CABLE

ELECTRICAL LOAD SUMMARY TRANSFORMER 6					
POWER COMPANY:	COAST ELECTRIC				
PROJECT NAME:	EXIT 1 RV RESORT				
PROJECT ADDRESS:	CLYDE MEITZIER				
CITY TOWN:	NICHOLSON, MISSISSIPPI				
INTENDED USER:	RV PARK				
REQUIRED SERVICE:	240/120 VOLTS	1 PHASE	3 WIRE		
SERV ENTR SIZE:	400 AMPS				
HVAC TONNAGE:	3 TONS				
LARGEST MOTOR:	HP				
LOAD SOURCE	10KVA	30KVA	OR	10KW	30KW
BUILDING LIGHTING	1,360.0				
ELECTRIC WATER HEATING	5,000.0				
HEAT PUMPS					
SUPPLEMENTAL HEAT SYSTEMS					
AIR COND CONDENSING UNITS	2,000.0				
ELEC HEATING (PRIMARY) AHUS	3,600.0				
COOKING					
REFRIGERATION	3,600.0				
RECEPTACLES (STANDARD)	7,780.0				
RECEPTACLES (COMPUTER)					
TOTAL MOTORS (EXCLUDE HVAC)					
EXTERIOR LIGHTING	500.0				
MISCELLANEOUS - CEILING FANS					
OTHER - 15 RV SITES	144,000.0				
TOTAL CONNECTED LOAD	161,980.0				

ELECTRICAL LOAD SUMMARY TRANSFORMER 2					
POWER COMPANY:	COAST ELECTRIC				
PROJECT NAME:	EXIT 1 RV RESORT				
PROJECT ADDRESS:	CLYDE MEITZIER				
CITY TOWN:	NICHOLSON, MISSISSIPPI				
INTENDED USER:	RV PARK				
REQUIRED SERVICE:	240/120 VOLTS	1 PHASE	3 WIRE		
SERV ENTR SIZE:	400 AMPS				
HVAC TONNAGE:	TONS				
LARGEST MOTOR:	HP				
LOAD SOURCE	10KVA	30KVA	OR	10KW	30KW
BUILDING LIGHTING	1,360.0				
ELECTRIC WATER HEATING	10,000.0				
HEAT PUMPS					
SUPPLEMENTAL HEAT SYSTEMS					
AIR COND CONDENSING UNITS					
ELEC HEATING (PRIMARY) AHUS					
COOKING					
REFRIGERATION					
RECEPTACLES (STANDARD)	1,080.0				
RECEPTACLES (COMPUTER)					
TOTAL MOTORS (EXCLUDE HVAC)					
EXTERIOR LIGHTING	500.0				
MISCELLANEOUS - CEILING FANS	6,500.0				
OTHER - 17 RV SITES	168,200.0				
TOTAL CONNECTED LOAD	182,640.0				



200A FEEDER, 240/120V, 1 PHASE, 3 WIRE
3/0, 350 KCM WITH # 3 GND, DIRECT
BURIAL MULTI-CONDUCTOR CABLE



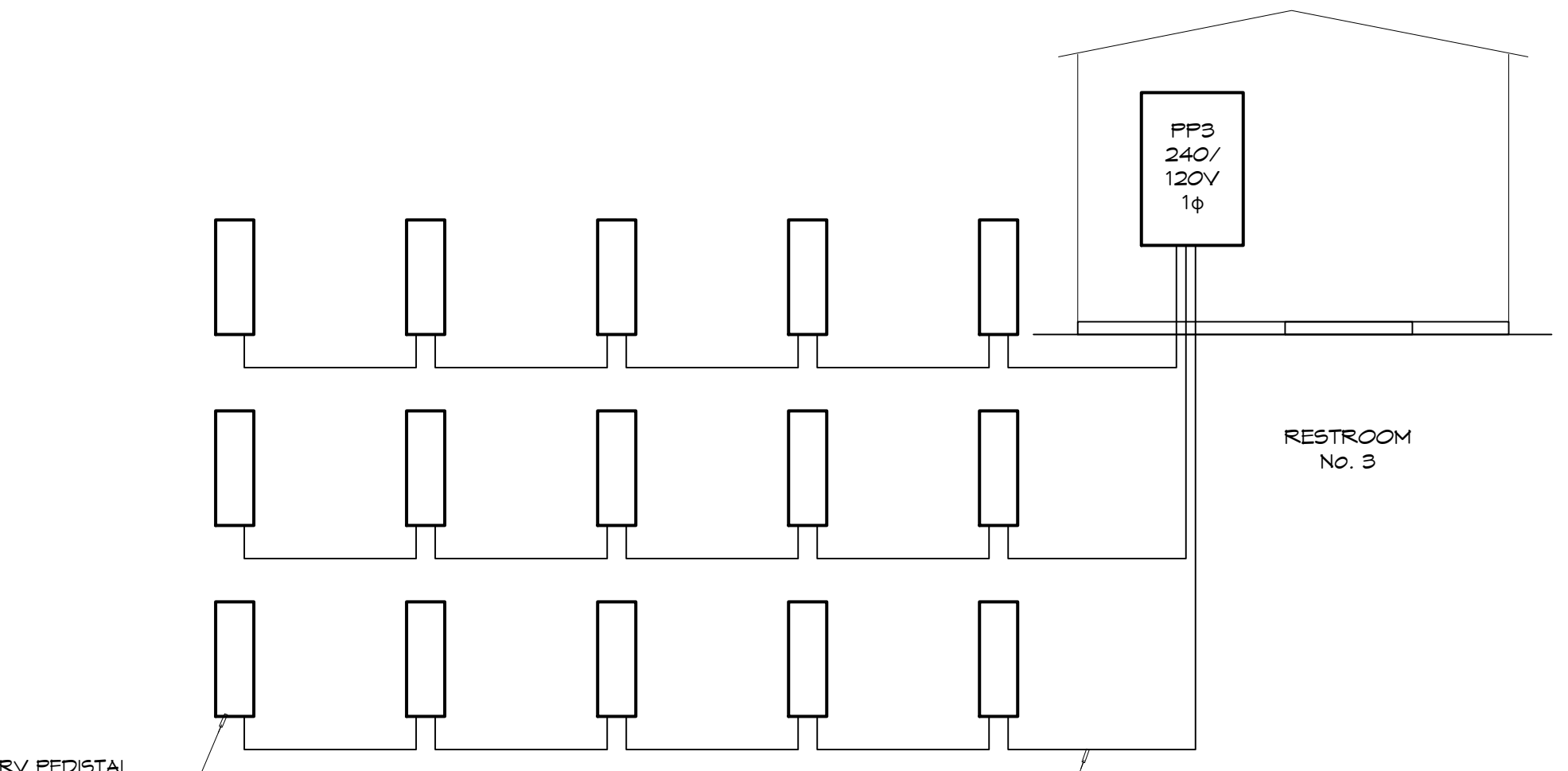
200A FEEDER, 240/120V, 1 PHASE, 3 WIRE
3/0, 350 KCM WITH # 3 GND, DIRECT
BURIAL MULTI-CONDUCTOR CABLE

1" C, 2-6 AWG, 1-10 AWG GND

LIFT STATION

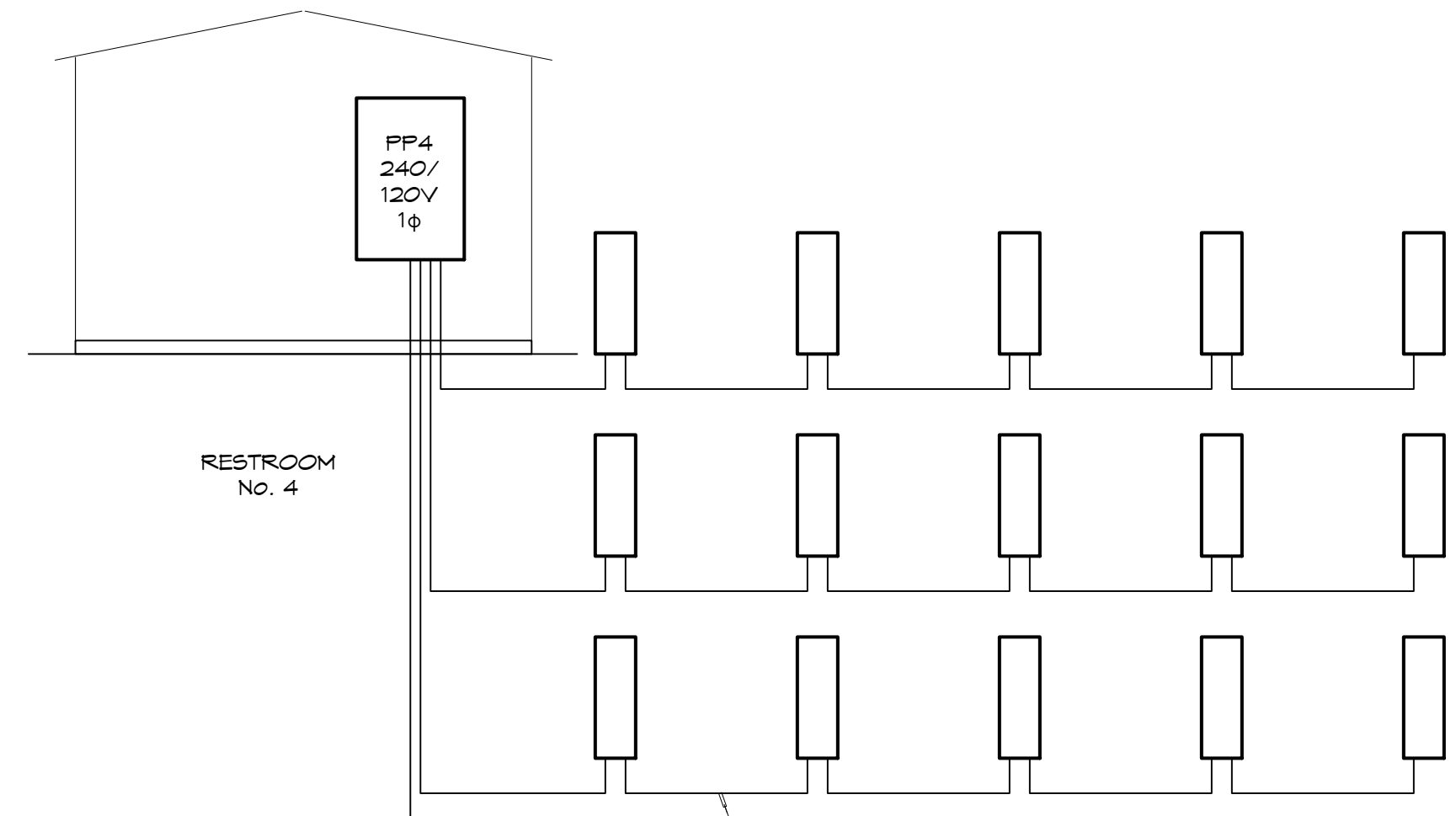
ELECTRICAL LOAD SUMMARY TRANSFORMER 5					
POWER COMPANY:	COAST ELECTRIC				
PROJECT NAME:	EXIT 1 RV RESORT				
PROJECT ADDRESS:	CLYDE MEITZIER				
CITY TOWN:	NICHOLSON, MISSISSIPPI				
INTENDED USER:	RV PARK				
REQUIRED SERVICE:	240/120 VOLTS	1 PHASE	3 WIRE		
SERV ENTR SIZE:	400 AMPS				
HVAC TONNAGE:	TONS				
LARGEST MOTOR:	2 HP				
LOAD SOURCE	10KVA	30KVA	OR	10KW	30KW
BUILDING LIGHTING	1,360.0				
ELECTRIC WATER HEATING	10,000.0				
HEAT PUMPS					
SUPPLEMENTAL HEAT SYSTEMS					
AIR COND CONDENSING UNITS					
ELEC HEATING (PRIMARY) AHUS					
COOKING					
REFRIGERATION					
RECEPTACLES (STANDARD)	1,080.0				
RECEPTACLES (COMPUTER)					
TOTAL MOTORS (EXCLUDE HVAC)	6,600.0				
EXTERIOR LIGHTING	500.0				
MISCELLANEOUS - CEILING FANS	6,500.0				
OTHER - 15 RV SITES	144,000.0				
TOTAL CONNECTED LOAD	170,040.0				

ELECTRICAL LOAD SUMMARY TRANSFORMER 3					
POWER COMPANY:	COAST ELECTRIC				
PROJECT NAME:	EXIT 1 RV RESORT				
PROJECT ADDRESS:	CLYDE MEITZIER				
CITY TOWN:	NICHOLSON, MISSISSIPPI				
INTENDED USER:	RV PARK				
REQUIRED SERVICE:	240/120 VOLTS	1 PHASE	3 WIRE		
SERV ENTR SIZE:	400 AMPS				
HVAC TONNAGE:	TONS				
LARGEST MOTOR:	HP				
LOAD SOURCE	10KVA	30KVA	OR	10KW	30KW
BUILDING LIGHTING	1,360.0				
ELECTRIC WATER HEATING	10,000.0				
HEAT PUMPS					
SUPPLEMENTAL HEAT SYSTEMS					
AIR COND CONDENSING UNITS					
ELEC HEATING (PRIMARY) AHUS					
COOKING					
REFRIGERATION					
RECEPTACLES (STANDARD)	1,080.0				
RECEPTACLES (COMPUTER)					
TOTAL MOTORS (EXCLUDE HVAC)					
EXTERIOR LIGHTING	500.0				
MISCELLANEOUS - CEILING FANS	6,500.0				
OTHER - 15 RV SITES	144,000.0				
TOTAL CONNECTED LOAD	163,440.0				



RV PEDIestal
(TYPICAL FOR #2)

200A FEEDER, 240/120V, 1 PHASE, 3 WIRE
3/0, 350 KCM WITH # 3 GND, DIRECT
BURIAL MULTI-CONDUCTOR CABLE



BEFORE ROUTING FEEDER TO WATER WELL, VERIFY
EQUIPMENT AND SIZE CIRCUIT ACCORDINGLY.

WELL SHED

ELECTRICAL LOAD SUMMARY TRANSFORMER 4					
POWER COMPANY:	COAST ELECTRIC				
PROJECT NAME:	EXIT 1 RV RESORT				
PROJECT ADDRESS:	CLYDE MEITZIER				
CITY TOWN:	NICHOLSON, MISSISSIPPI				
INTENDED USER:	RV PARK				
REQUIRED SERVICE:	240/120 VOLTS	1 PHASE	3 WIRE		
SERV ENTR SIZE:	400 AMPS				
HVAC TONNAGE:	TONS				
LARGEST MOTOR:	2 HP				
LOAD SOURCE	10KVA	30KVA	OR	10KW	30KW
BUILDING LIGHTING	1,360.0				
ELECTRIC WATER HEATING	10,000.0				
HEAT PUMPS					
SUPPLEMENTAL HEAT SYSTEMS					
AIR COND CONDENSING UNITS					
ELEC HEATING (PRIMARY) AHUS					
COOKING					
REFRIGERATION					
RECEPTACLES (STANDARD)	1,080.0				
RECEPTACLES (COMPUTER)					
TOTAL MOTORS (EXCLUDE HVAC)	6,600.0				
EXTERIOR LIGHTING	500.0				
MISCELLANEOUS - CEILING FANS	6,500.0				
OTHER - 15 RV SITE	144,000.0				
TOTAL CONNECTED LOAD	170,040.0				

RISER DIAGRAM

SCALE: NTS

DAMMON ENGINEERING, INC.
LOUISIANA & MISSISSIPPI
www.dammonengineering.com
info@dammonengineering.com
PH: 985.649.9832
Chief Engineer: Brian Mistich, PE
554 Old Spanish Trail
Slidell, LA 70458

DATE	REVISIONS	#	DESCRIPTION



NEW RECREATIONAL RV SITE
EXIT 1 RV RESORT, LLC.
CLYDE MEITZIER ROAD
NICHOLSON MS MISSISSIPPI 39446
JOB No: 2486 | DATE: 04-11-2022 | DRAWN BY: BAW
D/D/JTL | CHECKED BY:

SHEET TITLE:
LOAD SUMMARIES
DRAWING NUMBER:
E103
SHEET No: 18 of 14