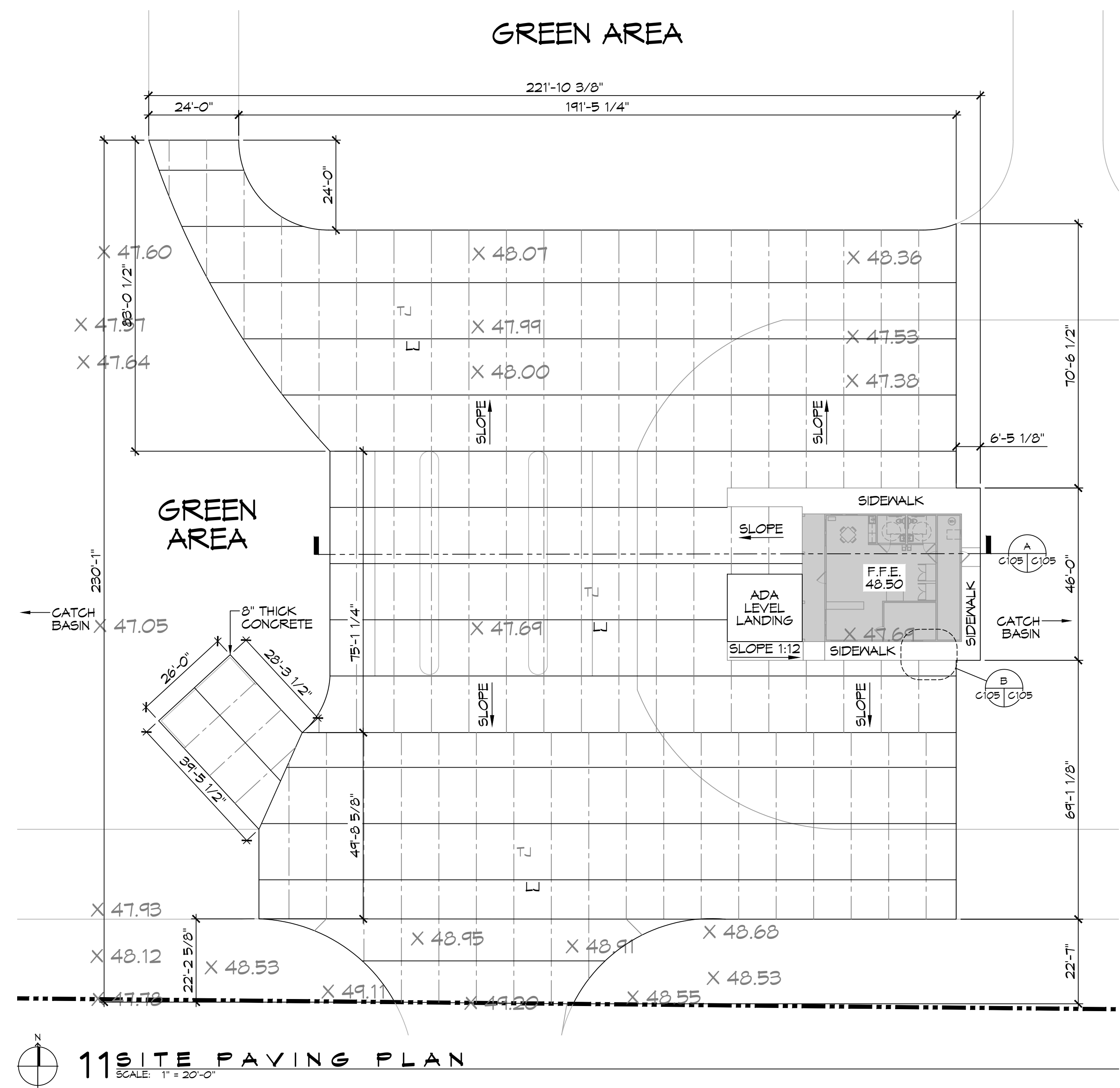
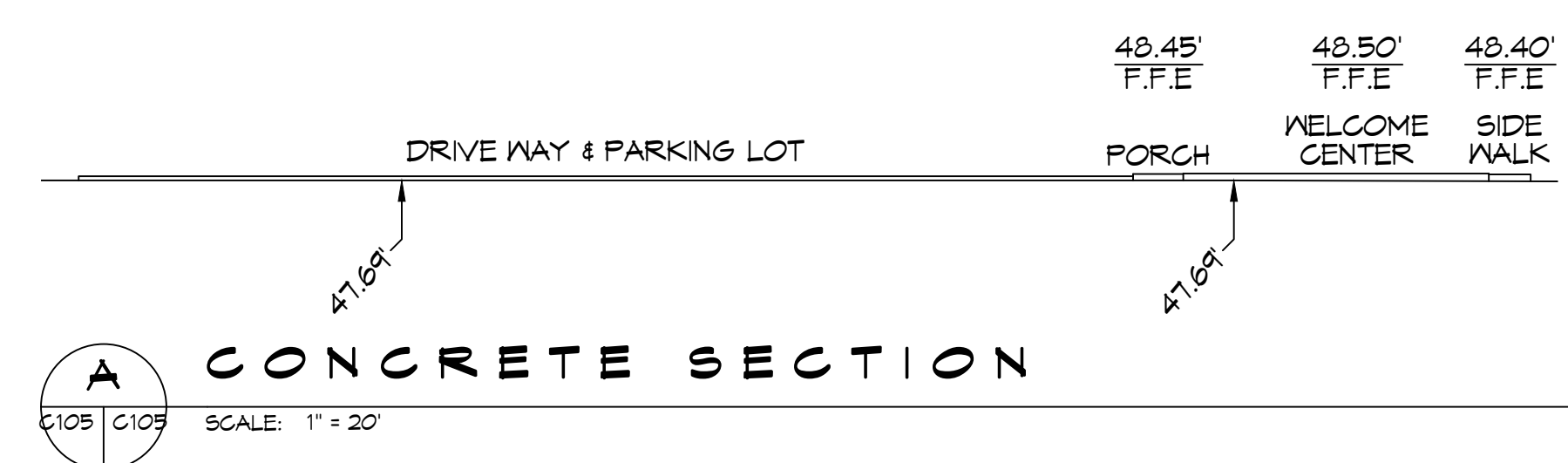


FILE NAME: J:\Comm\10438 - Frank Morgan, PE\10438 - Site Paving\10438 - Site Paving.dwg PLOT DATE: 04/11/2022 8:14:44 AM



11 SITE PAVING PLAN
 SCALE: 1" = 20'-0"



A CONCRETE SECTION
 SCALE: 1" = 20'

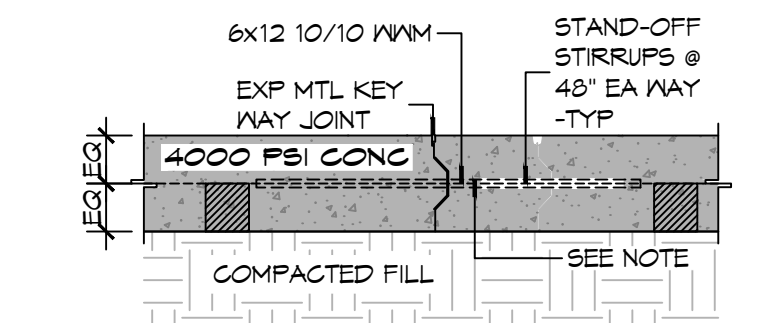
GENERAL PAVING NOTES

1. ALL NEW CONCRETE SHALL HAVE A MINIMUM COMPRESSIVE STRENGTH OF 4,000 PSI AT 28 DAYS AND A MINIMUM THICKNESS OF 6". CONCRETE MIX SHALL BE IN ACCORDANCE WITH THE LATEST REVISION OF ASTM C-150 TYPE 1.
2. CONCRETE PAVING THICKNESS SHALL VARY AS FOLLOWS:
 - a. APRONS & LOADING AREAS = 8" THICKNESS (INDICATED WITH CROSS HATCH WHERE OCCURS)
 - b. DRIVE LANES & PARKING AREAS = 6" THICKNESS (STANDARD UNO)
3. ALL REINFORCING STEEL SHALL MEET ASTM-A615 (GRADE 60).
4. ALL REINFORCING STEEL SHALL BE SECURELY SUPPORTED TO PREVENT BOTH VERTICAL AND HORIZONTAL MOVEMENT DURING CONCRETE PLACEMENT. ALL CONTROL AND EXPANSION JOINTS SHALL BE LOCATED AND INSTALLED AS SHOWN ON THE PAVING PLAN AND IN ACCORDANCE WITH THE MANUFACTURER'S RECOMMENDATIONS.
5. ALL SUB GRADE FILL SHALL BE SELECT GRANULAR MATERIAL COMPACTED TO 95% STANDARD PROCTOR DENSITY IN A MAXIMUM OF 6" LIFTS.
6. ANY WORK WITHIN THE ROADWAY OR ADJACENT TO THE ROADWAY CAUSING AN INTERFERENCE TO VEHICULAR TRAFFIC MUST CONFORM TO THE REQUIREMENTS SET FORTH BY THE UNIFORM MANUAL OF TRAFFIC CONTROL DEVICES OF THE STATE OF LOUISIANA. THE CONTRACTOR MUST FURNISH ALL NECESSARY TRAFFIC SIGNS AND/OR BARRICADES AND MAINTAIN THEM DURING CONSTRUCTION ACTIVITY.

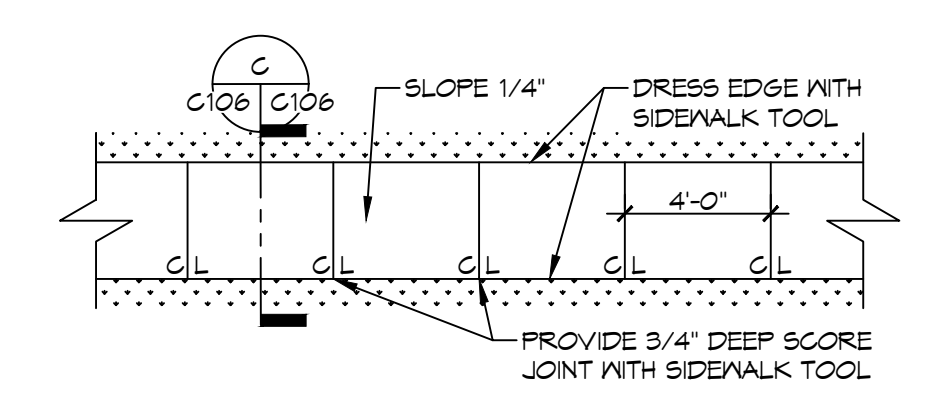
PAVING LEGEND

- L** LONGITUDINAL JOINTS - NO. 5 DEFORMED DONEL RODS 24" LONG @ 24" O. C.
- TJ** TRANSVERSE JOINTS (TJ) = NO. 5 SMOOTH DONEL RODS 24" LONG @ 24" O. C.

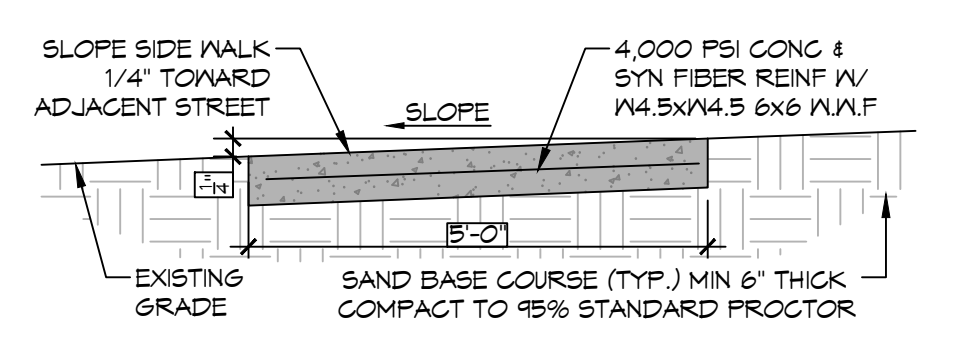
6" MTL KEYWAY JOINT SYSTEM NOTE:
 LONGITUDINAL JOINTS (LJ): NO. 5 DEFORMED DONEL ROD 24" L @ 24" O.C.
 TRANSVERSE JOINTS (TJ): NO. 5 SMOOTH DONEL ROD 24" L @ 24" O.C.



PAVEMENT JOINT
 SCALE: 1" = 1'-0" TYPICAL



B SIDEWALK TYP.
 SCALE: 1" = 1'-0" PLAN VIEW



C SIDEWALK TYP.
 SCALE: 1" = 1'-0" SECTION VIEW

DAMMON ENGINEERING, INC.
 LOUISIANA & MISSISSIPPI
 Chief Engineer: Brian Watch, PE
 554 Old Spanish Trail
 Slidell, LA 70468
 www.dammonengineering.com
 info@dammonengineering.com
 PH: 985.649.9532

#	DESCRIPTION	DATE



NEW RECREATIONAL RV SITE
EXIT 1 R.V. LLC.
 CLYDE MEITZER ROAD
 NICHOLSON MS 38955 (P) 98466
 JOB No: 2456 DATE: 04-11-2022
 DRAWN BY: BAW CHECKED BY: CKD

SHEET TITLE:
 SITE PAVING PLAN
 DRAWING NUMBER:
C105
 SHEET No: 7 of 14