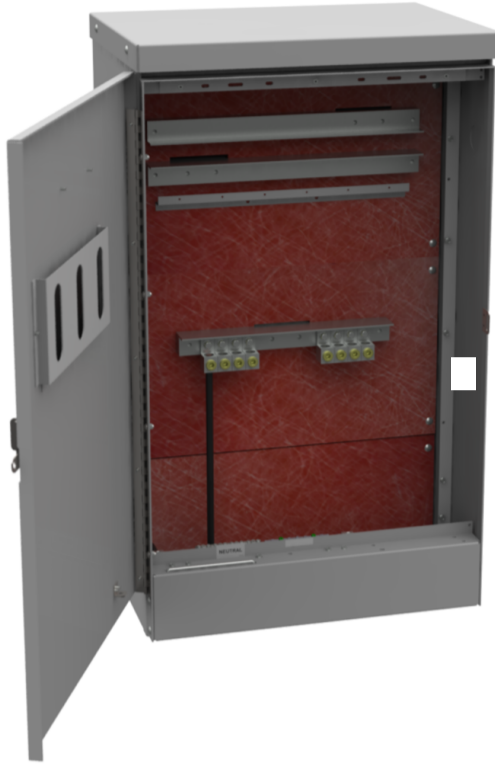


CP3B-AUX-1200



600 To 1200 Ampere 120-240 Volt Pad Mount Distribution Panel Board Enclosure Up To 6-2 Pole 200 Ampere Breakers

SPECIFICATIONS

Height	41 IN
Length	17 IN
Width	24 IN

Please consult serving utility for their requirements prior to ordering or installing, as specifications and approvals vary by utility and may require local electrical inspector approval. All installations must be installed by a licensed electrician and must comply with all national and local codes, laws and regulations. Milbank reserves the right to make changes in specifications and features shown without notice or obligation.

Appears In:

[Ameren Service Area](#)

[Tennessee Area](#)

[Western Region Catalog](#)

[Recreational Vehicle Park Electrical Products](#)