

# PROJECT **CONSTITUTION** GUIDE



**meineke**<sup>®</sup>  
DOING CAR CARE RIGHT ✓

# LET'S GET STARTED

**Congratulations! You have reached the upgrading stage of Project Constitution,** and subject to Meineke review and approval to your plan, qualify to use the accumulated funds to enhance your center image.

In partnership with the Ad Council, we have worked to set a list of pre-approved and prioritized updates that these project funds can be used for. This is intended to ensure that the dollars we've worked diligently to enhance your center image and create a consistent look and feel across all locations.

The order in which upgrades can be completed is as follows:

1.	Exterior Paint
2.	Exterior Wall Signs
3.	Exterior Fascia Panels
4.	Interior Wall Paint
5.	Interior Floors
6.	Meineke Wall
7.	Meineke Kiosks
8.	Hospitality Station
9.	Meineke Workstation
10.	Lobby Chairs
11.	Bay Title Lights
12.	Pole Sign
13.	Exterior Facade Accents

If your center already meets one of these criteria, as it's outlined in this guide, you will be given a chance to request an exception by providing proof you already meet the criteria via the Project Constitution Proposal Form.

Once you have submitted this proposal, it will be reviewed and approved by the Project Constitution team. Once approved, you will receive 50% of your funds to start upgrades. Once all your work is completed, you will receive the rest of the funds.

Use this guide to help conversations with your general contractors and prepare your materials prior to submitting your Project Constitution Proposal Form.

The link to submit your proposal will be sent from **[pcsupport@drivenbrands.com](mailto:pcsupport@drivenbrands.com)**. If you have any questions or need help with your submission, please submit a ticket to **<https://drivenbrands.atlassian.net/servicedesk/customer/portal/5>**.

**CONGRATULATIONS AND  
GOOD LUCK!**

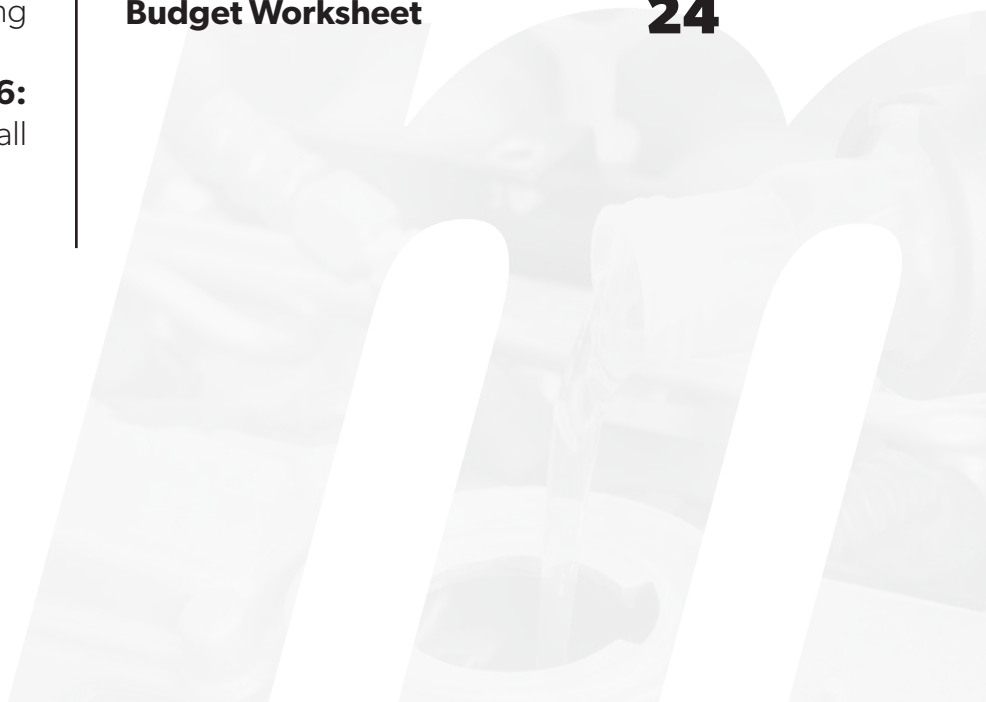


**Danny Rivera**

President,  
Meineke Car Care Centers

# TABLE OF CONTENTS

<b>4</b>	<b>Checklist</b>	<b>Step 7:</b> Meineke Kiosk	<b>17</b>
<b>5</b>	<b>Q&amp;A</b>	<b>Step 8:</b> Hospitality Station	<b>18</b>
<b>6</b>	<b>Glossary</b>	<b>Step 9:</b> Meineke Workstation	<b>19</b>
<b>7</b>	<b>Step 1:</b> Exterior Paint	<b>Step 10:</b> Lobby Chairs	<b>20</b>
<b>8</b>	<b>Step 2:</b> Exterior Wall Sign	<b>Step 11:</b> Bay Title Lights	<b>21</b>
<b>11</b>	<b>Step 3:</b> Exterior Fascia Panels	<b>Step 12:</b> Pole Sign	<b>22</b>
<b>13</b>	<b>Interior Lobby Summary</b>	<b>Step 13:</b> Exterior Façade Accents	<b>23</b>
<b>14</b>	<b>Step 4:</b> Interior Wall Paint	<b>Budget Worksheet</b>	<b>24</b>
<b>15</b>	<b>Step 5:</b> Interior Flooring		
<b>16</b>	<b>Step 6:</b> Meineke Wall		



# PROJECT CONSTITUTION CHECKLIST PROJECTIONS

It's important to note that you need to compile all the necessary materials below before starting your submission. Once you start, you will not be able to save your progress.

The proposal will take between 30-45 minutes to complete.

## You will need the following:

### Before Pictures:

#### Exterior Pictures

- Entrance
- Pole/Monument Sign
- Bays

#### Interior Pictures

- Front Desk
- Floors
- Waiting Area
- Hospitality Station

### Before you Begin:

Be sure to check your lease and city ordinances to determine if you are able to make the following upgrades: exterior paint, fascia panels, title sign and/or pole signs

For each of the following Steps you will need to provide these items, depending on the budget available for your location.

#### Step 1: Exterior Paint

- Bid for painting
- Documentation if the building cannot be painted

#### Step 2: Exterior Wall Sign

- Determine, if you have the correct Meineke sign
- Sign Purchase
- Bid for Installation

#### Step 3: Exterior Fascia Panel

- Number of Bays
- Bid for Installation
- Order for Signs
- Documentation if the building cannot be painted

#### Step 4: Interior Wall Paint

- Estimate of Paint and Repair, if needed

#### Step 5: Interior Floors

Estimate for flooring to include removing of existing and installation of new

#### Step 6-10: Interior Installations

- Measure the wall behind existing or planned sales desk(s) to determine the size of the Meineke Wall needed
- Measure waiting room to determine how many chairs needed, as well as work stations
- Measure hospitality station area
- Estimate for production of wall, workstations, hospitality area, etc, if sourced locally
- Bid for installation

#### Step 11: Bay Title Lights

- Estimate for order of lights, depending on the number of bays
- Bid to paint and install lights (Note: Consider including this in your fascia panel installation)

#### Step 12: Pole/Monument Sign

- Estimate to order and install

#### Step 13: Accent Wall

- Source product for wood and stone accent
- Estimate for installation

# PROJECT CONSTITUTION Q&A

## **1. How will Project Constitution benefit me?**

Project Constitution is a great opportunity for you to make necessary upgrades to your center to stay ahead of competitors.

## **2. How do I start the Project Constitution process?**

Once you have accrued funds for two years, you will be able to fill out the proposal. This proposal will be sent to you via e-mail. If you know you have accrued for two years, please e-mail [pcsupport@drivenbrands.com](mailto:pcsupport@drivenbrands.com) to request the proposal. Use this PC Guide to help you complete the proposal.

## **3. What happens after I submit the Project Constitution proposal?**

Your proposal will need to be approved by the Project Constitution team. Please do not start any work until the proposal is approved.

## **4. What vendors can I use to complete upgrades?**

You may use any vendor of your choosing. If wanted, corporate can provide vendors for exterior signage, fascia panels, and furniture. For all other work, please use local vendors of your choosing.

## **5. When will I receive the accrued funds?**

Project Constitution has two payments. After your proposal is approved, you will receive 50% of your accrued funds or 50% of the estimates you submit, whichever is the lesser amount. Once you complete all upgrades, you will receive the remaining funds.

## **6. How long will it take for me to receive the funds?**

Please allow up to three weeks for you to receive your funds. Your funds will be reviewed by accounting and then paid by AP.

## **7. What do I need to do once all upgrades are completed?**

Once upgrades are complete, please send in photos of all completed work to [pcsupport@drivenbrands.com](mailto:pcsupport@drivenbrands.com). These photos will be reviewed and approved by the Project Constitution team.

# PROJECT **CONSTITUTION** GLOSSARY



- 1.** Exterior Paint
- 2.** Exterior Wall Signs
- 3.** Exterior Fascia Panels
- 4.** Bay Title Lights
- 5.** Exterior Façade Accents

# PROJECT CONSTITUTION

## STEP 1: EXTERIOR PAINT

The first step of Project Constitution is to paint the exterior of your location. The most common facades are brick, split face block, stucco, exterior insulation finish system, dryvit and quick brick. Your center rendering should be helpful to differentiating the areas to be painted cliff colors. Removal of the existing paint and awnings are included as a part of this step, if necessary.

### 1. The exterior wall from the ground to the top of the shortest bay:

Sherwin Williams Eider White (SW 7014) - Flat Finish

### 2. From the top of the tallest bay to eaves (top of the building):

Sherwin Williams Iron Ore (SW 7069) - Flat finish

### 3. Windows, Doors and Bay Doors should all be painted:

Sherwin Williams Tricorn Black (SW 6258) - Flat Finish

*Note: Painting the roof is not a requirement, but if you do choose to include it in this step, dark colors are preferred. Black is ideal.*



**Reminder: As a part of this step, please include a quote to remove all awnings.**

### How to know if you qualify for an exception to this step?

If your location meets any of the criteria below, you may be eligible for an exception. You will need to provide documentation or pictures to validate.

- *Already painted the correct or similar color*
- *Exterior is constructed of brick or decorative stone*
- *Exterior is made of a panel/product that cannot be painted*
- *You can not paint due to permitting, terms of your lease or zoning (Be prepared to provide documentation)*

# PROJECT CONSTITUTION

## STEP 2: EXTERIOR WALL SIGN

The exterior wall sign is the contour-cut title "Meineke" sign that is on the front of your center.

In order to meet the standard, the sign must be:

- The title sign with the square "l", not rounded
- Must include "Car Care Center" centered below the Meineke
- The sign must be positioned over/near the entryway, depending on the location

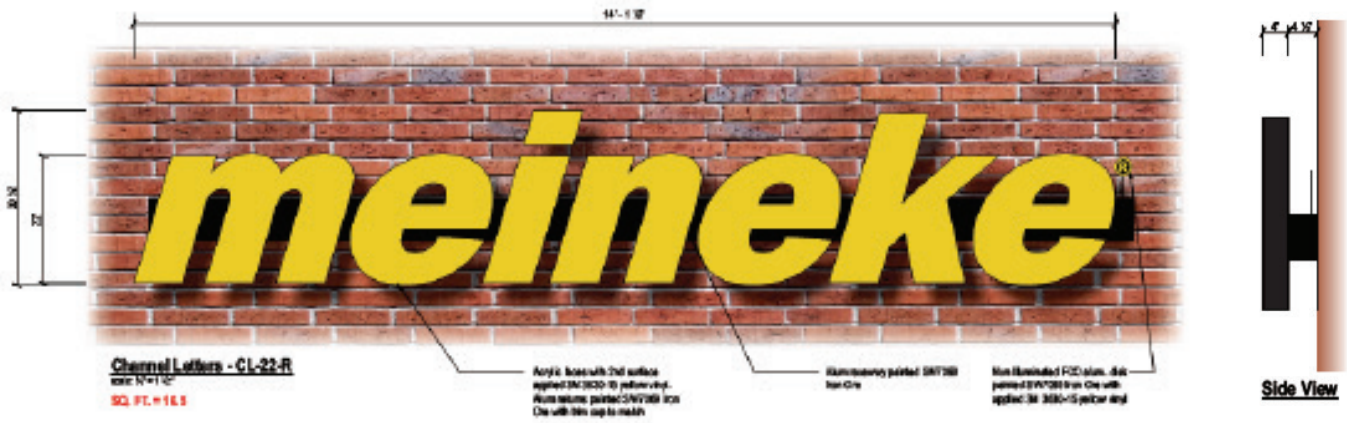
These can be ordered through the PC Proposal Form or locally sourced. Be sure to include the cost of removal/installation in your proposal.



### Title Sign Specifications



**Channel Letters - CL-14-R**  
 Size: 14" x 10"  
 SQ. FT. = 16.5



**Channel Letters - CL-22-R**  
 Size: 22" x 14"  
 SQ. FT. = 16.5



# PROJECT

# CONSTITUTION

## STEP 2: EXTERIOR WALL SIGN (CONT.)



**S/F INTERNALLY ILLUMINATED WALL SIGN - WS-17-CLOUD**

CUST PART#MCC1008

SQ. FT. = 16.5

**SIDE VIEW**  
SCALE: 3/4" = 1'-0"

### SIGN SPECIFICATIONS - (WALL SIGN)

**CABINET MATERIAL:** .220" THK ABS - VACUUM FORMED

**CABINET FINISH:** P4 ON THE OUTSIDE; P3 ON THE INSIDE

**CABINET DEPTH:** 6"

**FACE MATERIAL:** 1/8" THICK VACUUM FORMED POLYCARBONATE  
W/ 1" FORMED RETURN FOR MOUNTING TO CABINET RETURNS

**FACE FINISH:** CLEAR

**GRAPHIC SPECS:** APPLIED 2ND SURFACE VINYL TO MATCH V1 & V4  
2ND SURFACE OF FACE TO BE SPRAY FINISHED P3

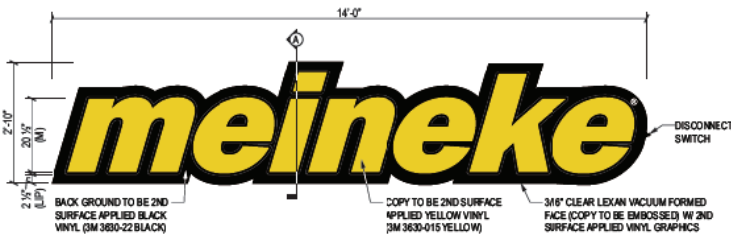
**BACK FINISH:** P4

**INTERNAL ILLUMINATION:** 800MA HO/DL FLUORESENT LAMPS - F96T 12 (X2)

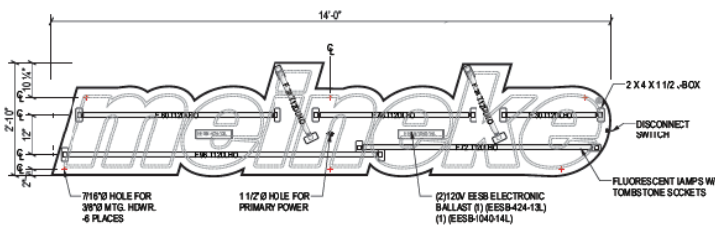
**BALLAST:** EESB-416-12L (X1)

**INSTALL METHOD:** ANCHORED TO EXTERIOR WALL VIA 3/6" Ø WALL ANCHORS - 4  
ANCHORS MIN. SPECIFIC WALL ANCHORS TBD VIA SPECIFIC WALL SURFACE

FINISH & VINYL SPECIFICATIONS		
PANTONE	<div style="display: flex; justify-content: space-around;"> <div style="text-align: center;"> <div style="background-color: yellow; width: 20px; height: 20px; border-radius: 50%; margin: 0 auto; color: white; font-weight: bold; padding: 2px;">P1</div> <p><b>PMS 109C</b> YELLOW</p> </div> <div style="text-align: center;"> <div style="background-color: red; width: 20px; height: 20px; border-radius: 50%; margin: 0 auto; color: white; font-weight: bold; padding: 2px;">P2</div> <p><b>PMS 185C</b> RED</p> </div> </div>	
	<div style="display: flex; justify-content: space-around;"> <div style="text-align: center;"> <div style="background-color: white; width: 20px; height: 20px; border-radius: 50%; margin: 0 auto; border: 1px solid black; color: black; font-weight: bold; padding: 2px;">P3</div> <p><b>PMS WHITE</b></p> </div> <div style="text-align: center;"> <div style="background-color: black; width: 20px; height: 20px; border-radius: 50%; margin: 0 auto; color: white; font-weight: bold; padding: 2px;">P4</div> <p><b>PMS BLACK</b></p> </div> </div>	
	VINYL	<div style="display: flex; justify-content: space-around;"> <div style="text-align: center;"> <div style="background-color: yellow; width: 20px; height: 20px; border-radius: 50%; margin: 0 auto; color: black; font-weight: bold; padding: 2px;">V1</div> <p><b>3M 3630-015</b> YELLOW</p> </div> <div style="text-align: center;"> <div style="background-color: red; width: 20px; height: 20px; border-radius: 50%; margin: 0 auto; color: black; font-weight: bold; padding: 2px;">V2</div> <p><b>3M 3630-33</b> RED</p> </div> </div>
		<div style="display: flex; justify-content: space-around;"> <div style="text-align: center;"> <div style="background-color: white; width: 20px; height: 20px; border-radius: 50%; margin: 0 auto; border: 1px solid black; color: black; font-weight: bold; padding: 2px;">V3</div> <p><b>3M 3630-20</b> WHITE</p> </div> <div style="text-align: center;"> <div style="background-color: black; width: 20px; height: 20px; border-radius: 50%; margin: 0 auto; color: white; font-weight: bold; padding: 2px;">V4</div> <p><b>3M 3630-22</b> WHITE</p> </div> </div>



**WS-40-CLOUD: FRONT VIEW**  
SCALE: 1/2" = 1'-0"



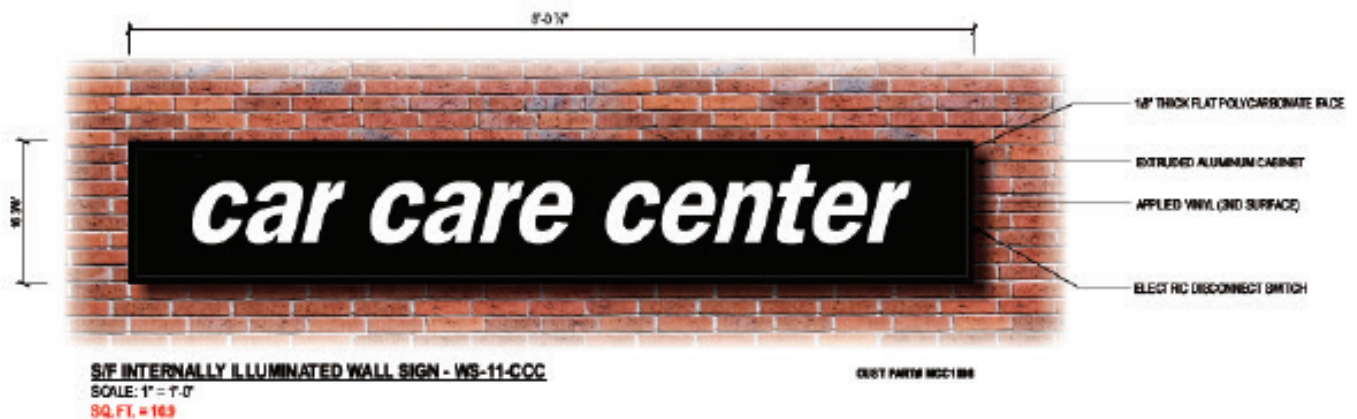
**LIGHTING / FRONT VIEW**  
SCALE: 1/2" = 1'-0"

# PROJECT

# CONSTITUTION

## STEP 2: EXTERIOR WALL SIGN (CONT.)

The title sign must include the following  
**CAR CARE CENTER.**



### SIGN SPECIFICATIONS - (WALL SIGN)

**LOGO CABINET MATERIAL:** 1/8" THICK EXTRUDED ALUMINUM (D/F EXTRUSION - SC#1929)

**LOGO CABINET FINISH:** P4

**LOGO CABINET DEPTH:** 9"

**FACE MATERIAL:** 1/8" THICK CLEAR POLYCARBONATE

**FACE FINISH:** CLEAR

**CABINET BACK MATERIAL:** .063" THICK ALUMINUM

**GRAPHIC SPECS:** APPLIED 2ND SURFACE VINYL TO MATCH V1, V2, V3 & V4. 2ND SURFACE OF FACE TO BE SPRAY FINISHED P3

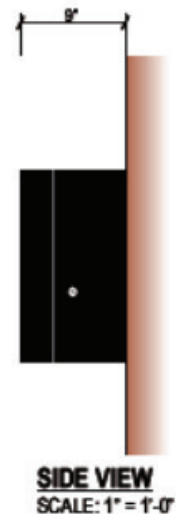
**RETAINING BAND MATERIAL:** 1/8" THICK EXTRUDED ALUMINUM (SC#1940)

**RETAINING BAND FINISH:** P4

**INTERNAL ILLUMINATION:** 800MA HO/DL FLUORESCENT LAMPS - F96/T12 (X2)

**BALLAST:** EESB-416-12L (X1)

**INSTALL METHOD:** ANCHORED TO BUILDING VIA 3/8" Ø WALL ANCHORS



# PROJECT **CONSTITUTION** STEP 3: EXTERIOR FASCIA PANELS

## What is an Exterior Fascia Panel?

These are the title signs that will display services over each of your bays.

## Fascia Panel Sign Specifications

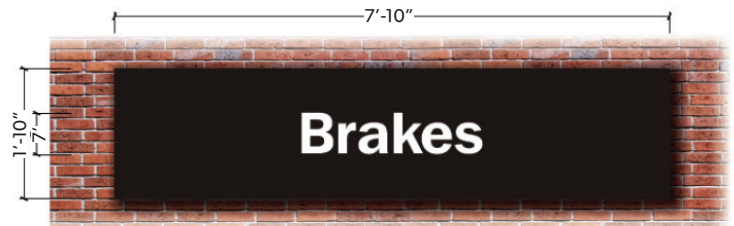
These signs are 2' x 8' and typeface Franklin Gothic Demi, as seen below.

Fascia Panels will be installed in the following order, depending on the number of bays you have available, starting from left to right (if you center is street facing) OR starting closest to the entrance.

1. Brakes
2. Oil Change
3. Tune Up
4. Check Engine Light
5. Tires & Alignment
6. Air Conditioning
7. Cooling System
8. Exhaust & Mufflers
9. Free Inspection

*Note: If the current building has fascia panels labeled "State Inspections", that label will be added to this cycle in the 3rd position. If you has more than 9 bays, you will start from 1 and work your way through the services.*

## Specifications:



**TYPICAL**  
**S/F NON-ILLUMINATED FASCIA PANELS - FP-16-B1**  
SCALE: 1" = 1'-0"  
**SQ. FT. = VARIES PER COPY**



# PROJECT CONSTITUTION

## STEP 3: EXTERIOR FASCIA PANELS (CONT.)

These signs can be sourced through the Meineke Support Center or sourced locally.



**Oil Changes**

### SIGN SPECIFICATIONS - (FASCIA PANELS)

**FACE MATERIAL:** .063" THICK ALUMINUM PAN

**FACE FINISH:** SW7069 IRON ORE

**GRAPHIC SPECS:** 1ST SURFACE APPLIED 3M 3630-20 WHITE VINYL

**MOUNTING BRACKET MATERIAL:** L 3/4 X 3/4 X .125 (6061) ALUMINUM FRAME

**MOUNTING BRACKET FINISH:** SW7069 IRON ORE

**INSTALL METHOD:** MTG. BRACKET TO BE ANCHORED TO EXTERIOR WALL VIA 3/8" Ø WALL ANCHORS - 6 TOTAL. (EXACT WALL ANCHOR TBD VIA WALL SURFACE). RETAINERS ARE TECH SCREWED TO Z-BRACKETS (TOP SIDE & BOTTOM SIDE)

**Brakes**

FP-16-B1-BRAKES **SQ.FT.=1.2**

**Oil Change**

FP-16-B1-OIL **SQ.FT.=1.7**

**Tune-Up**

FP-16-B1-TUNE **SQ.FT.=1.2**

**Check Engine Light**

FP-16-B1-CHECK **SQ.FT.=2.7**

**Tires/Alignment**

FP-16-B1-ALIGN **SQ.FT.=1.7**

**Air Conditioning**

FP-16-B1-AIR **SQ.FT.=0.8**

**Cooling System**

FP-16-B1-COOL **SQ.FT.=2.5**

**Exhaust & Mufflers**

FP-16-B1-PERF **SQ.FT.=3.4**

**Free Inspections**

FP-16-B1-FREE **SQ.FT.=2.7**

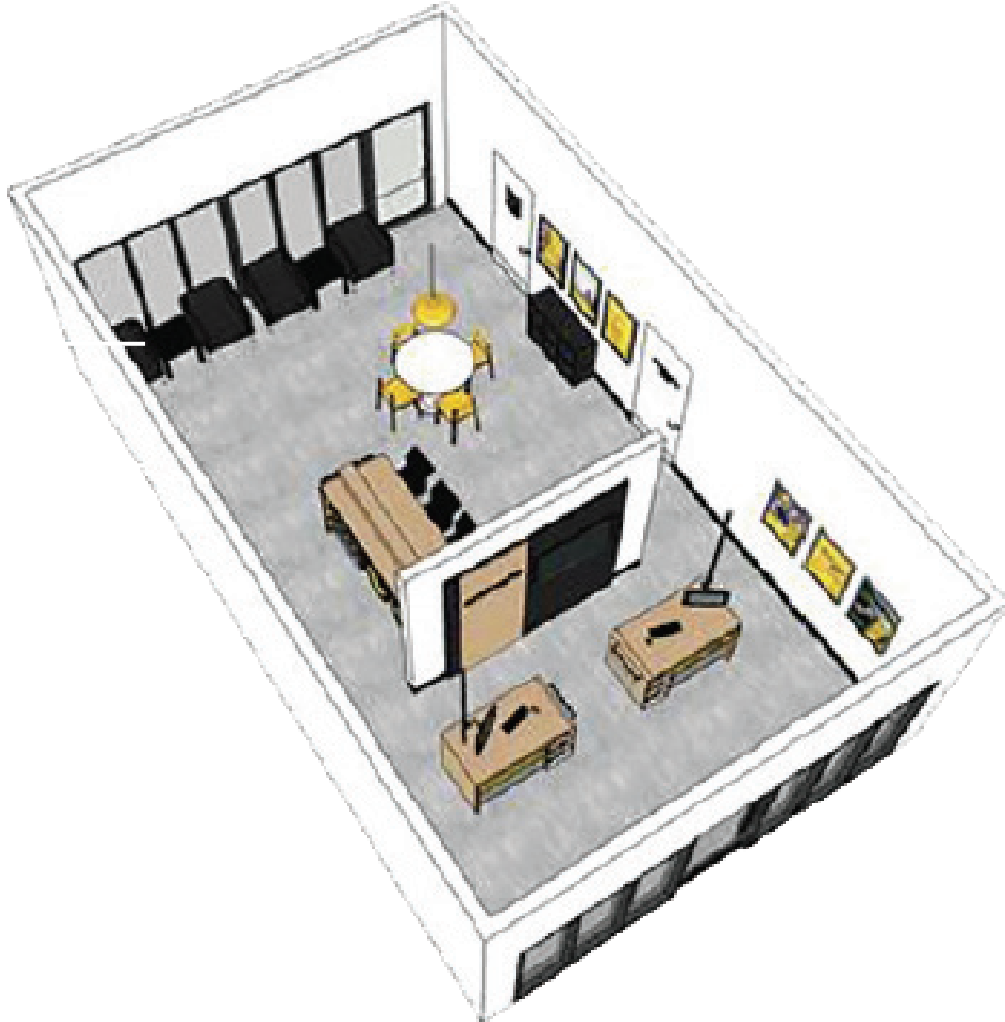
**State Inspections**

FP-16-B1-STATE **SQ.FT.=2.7**

### DETAIL OF COPY VARIATIONS

SCALE: 3/8" = 1'0"

# PROJECT **CONSTITUTION** INTERIOR LOBBY SUMMARY (STEP 4 - 10)



*Note: If you have a concrete or grounded sales desk, that could potentially be expensive to remove or replace and/or have limitations on power sources, please document and submit for exemption.*

# PROJECT CONSTITUTION

## STEP 4: INTERIOR WALL PAINT

The next step is to paint the interior of your location. This only includes the lobby, front office and bathrooms.

This step does NOT include the painting of the interior of the bays.

### Interior Paint Specifications

<b>WALLS</b>	Sherwin William Semi Gloss Pure White (SW 7005)
<b>TRIM</b>	Sherwin William Semi Gloss Pure White (SW 7005)
<b>CEILING</b>	Sherwin Williams Semi Gloss Zircon SW 2129
<b>DOORS</b>	Sherwin Williams Semi-Gloss Summit Gray / Dark Cool Neutral Colors SW 2127 (SW7669) (This does not include bay doors)



Interior concrete surfaces must have block filler applied prior to painting to fill pores and reduce paint absorption. This step also includes the removal of all wallpaper, decorative vinyls and resurfacing of the wall that may be needed to provide a clean finish.

*Note: Generic paint can be used instead of Sherwin-Williams brand, but it must match the color specifications.*

### Are you Exempt?

If your center is already painted in these colors you can request an exemption, by uploading current pictures of your interior.

While you are painting your locations, be sure to clean up and replace your in-center signage.

### REQUIRED INFORMATIONAL MATERIAL

Certain signage must be displayed for customers to see. These include but are not limited to a sign featuring accepted forms of payment, a disposal fees sign, and a shop supplies sign. These can be ordered at **MeinekePOS.com**.

### WHILE YOU ARE UPDATING YOUR LOBBY, MAKE SURE TO:

Take pride in your accomplishments. After all, you're some of the best technicians in the country. Hang any awards or certificates on the walls in the lobby or waiting room. These must be framed or properly displayed.

# PROJECT **CONSTITUTION** STEP 5: INTERIOR FLOORING

There are two routes to Step 5 – Interior Flooring

## **Option 1: Clean**

If you have floors that are in good condition in a solid neutral color, you can choose to clean your floors in this step.

If you have recently cleaned your floors and feel that they are in good condition, please take a picture and request exemption from this step as a part of the PC Proposal Form.

## **Option 2: Replace**

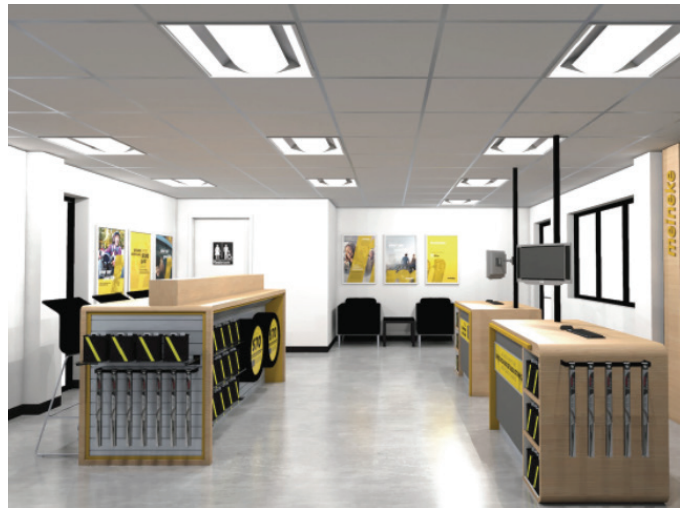
The approved flooring is **Kardean Colorado Loose Lay**.

If you have a similar product in a solid neutral color, but with a higher durability, feel free to submit your request via the PC proposal form. Approvals will be at the PC Committee’s discretion.

The flooring should continue throughout the front office, lobby and bathroom.



**Kardean Colorado Loose Lay.**



# PROJECT **CONSTITUTION** STEP 6: MEINEKE WALL

## What is the Meineke Wall?

The Meineke Wall is shown and is to be the new focal point of your lobby.

## MEINEKE WALL

This is to be located behind your service desk or near your kiosks. It's available in two different sizes depending on your lobby size through Meineke Support Center.

Meineke Wall may also be installed against an existing wall.



WALL SIZE	DIMENSIONS
SMALL WALL	95" H x 60" L x 4.5" W
LARGER WALL	95" H x 90" L x 4.5" W

## Be sure to include the purchase of the TV.

A 50" TV is mounted on the wall to display AutoNet. TVs are not provided. You will need to provide the cost of your TV as a part of your proposal, if you do not already have one in your center.

The average 50" TV costs approximately \$275 - \$350.

*Note: Content will be available via AutoNet content.*



# PROJECT CONSTITUTION STEP 7: MEINEKE KIOSK

## CUSTOMER SERVICE KIOSK

This is where Meineke employees will first greet customers and understand their service needs.

The swivel monitor is used to engage the customer in the proposal process and to better explain what services they need and why.

Promotional banners will be provided in POP kits to place on the front of the kiosk.

Shelves are used to display batteries and peg hangers are used to display wiper blades for a point of purchase item.

**The kiosks can be ordered from Meineke Support Center at the following estimates costs:**

KIOSK SIZE	DIMENSIONS
STANDARD	42" H x 52" L x 30" W

If you would like to produce these locally, visit the Project Constitution section of DrivenConnect to get details specs for the build.

However, you can also source these locally. The following specs and details are provided. Approval will be needed for any exchanges in materials and/or color.

*Note: The customer service kiosk comes with the pole and the computer monitor mount, which can be removed if not used.*



# PROJECT **CONSTITUTION** STEP 8: HOSPITALITY STATION

## HOSPITALITY STATION

The hospitality station is used to offer coffee, and house a fridge for bottled water and/or sodas, as well as a trash can.

If you currently have a refreshment stations, be sure to submit a picture.

**These can be sourced locally or ordered through Meineke Support Center at the following anticipated costs:**

HOSPITALITY STATION SIZE	DIMENSIONS
STANDARD	36" H x 48" L x 24" W



If you need a new coffee machine, caddy and/or refrigerator to fit into the space, you will need to purchase those and submit costs as a part of your proposal. (Traditionally, the cost for these are between \$200-350)

### **Additional items needed:**

- *Caddy for coffee products*
- *Trash can to fit space*
- *Coffee maker*
- *Pod organizer*

# PROJECT CONSTITUTION

## STEP 9: MEINEKE WORKSTATION

### CUSTOMER WORKSTATION

The small customer workstation is a place with power outlets for customers to work on laptops or phones while waiting on their service.

The slat hangers are included and can be used for displays.

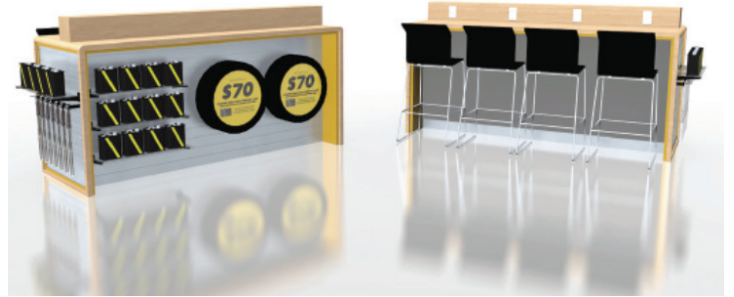


**Small (2 Seats)**

### LARGE CUSTOMER WORKSTATION

The large customer workstation features power outlets, 4 bar stools and is a place for customers to work on laptops or phones while waiting on their service.

The slat hangers are included and can be used for displays.



**Large (4 Seats)**

WORKSTATION SIZE	SIZE
SMALL WORKSTATION	60" H x 66" L x 36" W
LARGE WORKSTATION	48" H x 96" L x 36" W

# PROJECT **CONSTITUTION** STEP 10: LOBBY CHAIRS

Below are the lobby chair requirements for your center and the cost associated, based on the size of your lobby.

A minimum 2 lobby chairs. Additional chairs can be ordered depending on the size and configuration of your lobby.

ITEM	DIMENSIONS	
CHAIR	29 1/2" H x 27 1/2" W x 28 3/4" D	
VENDOR		PRODUCT NUMBER
IKEA		502.628.91

If the Ikea chair is out of stock, please submit another black, padded, leather chair for approval.



# PROJECT

# CONSTITUTION

## STEP 11: BAY TITLE LIGHTS

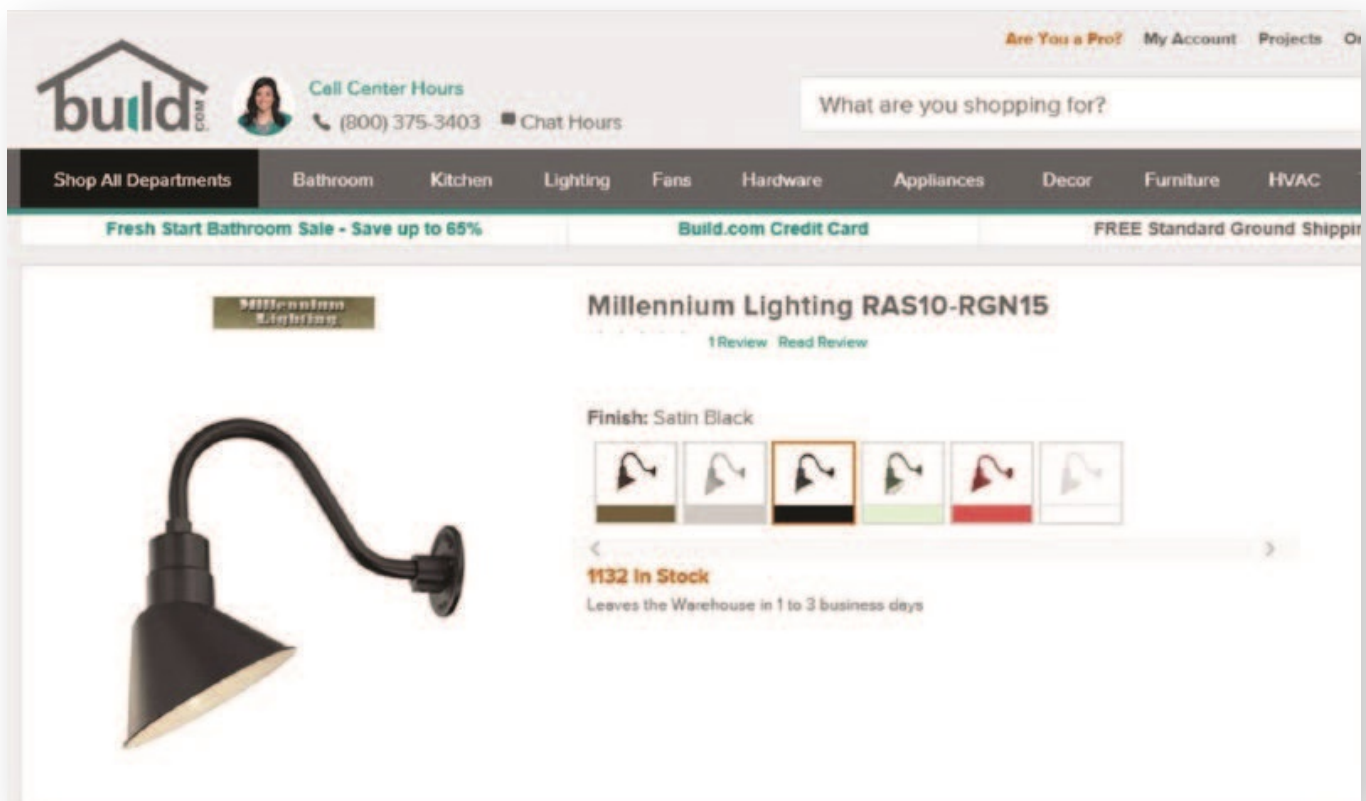
The Bay Title Lights should be aligned above your title signs, which were installed as a part of Step 3, as seen below.

The lights are available at [www.build.com](http://www.build.com) for purchase. Lights will need to be purchased in black or silver and spray painted yellow. (Pantone 109 Yellow).



**PANTONE  
109 U**

*Note: Be sure to check with an electrician to determine whether or not, your center has the wiring to install.*



# PROJECT CONSTITUTION

## STEP 12: POLE SIGN

The approved pole sign is the "Road Sign". If you currently have the Meineke "Road Sign", as shown below, you can submit a picture for exemption from this step.

### REPAIR OR REPLACE:

If you currently have a damaged or different sign, please prepare to upgrade the graphic or replace your current sign.

### INSTALL:

As a part of this step, you can also use these funds to install a pole or monument sign barring there are no limitations by city ordinances.

This can be ordered through Meineke Support Center or sourced locally.

### SPECIFICATION:

#### MCC1001 PYLON CABINET

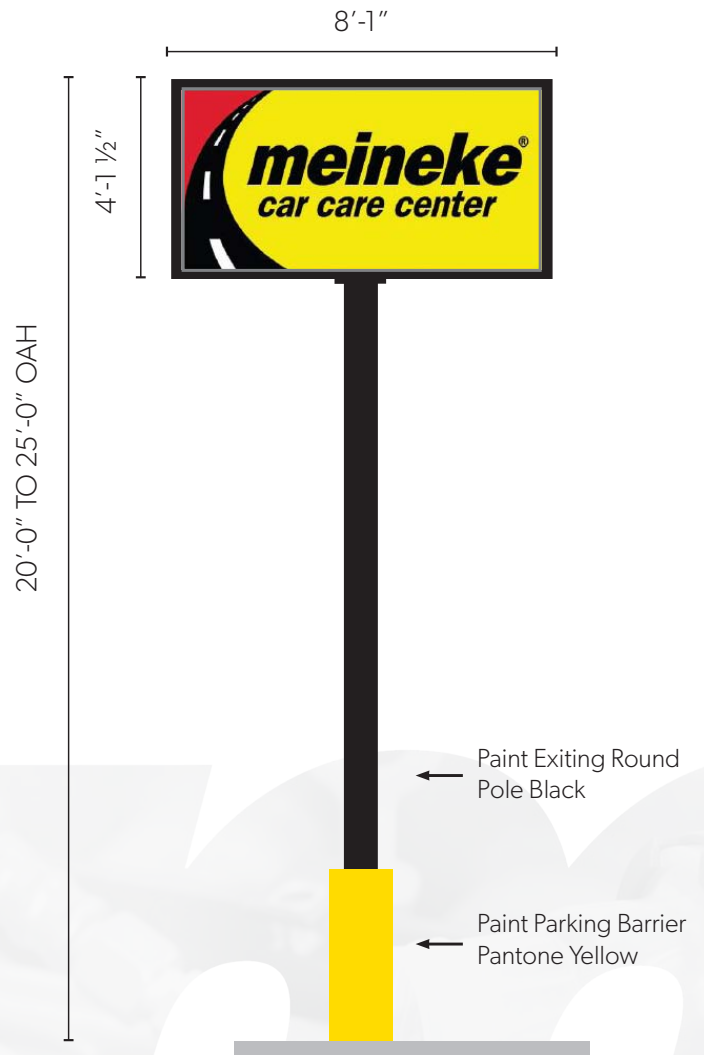
32 Square Feet

11 1/2" Cabinet Depth

#### 5' AND 6' CABINET SIGNS ARE AVAILABLE FOR POLE/MONUMENT SIGNS

### MONUMENT SIGN:

If you have a monument sign, please submit in this section the necessary adjustments.



# PROJECT

# CONSTITUTION

## STEP 13: EXTERIOR FAÇADE ACCENTS

In the final step, you can update the exterior of your location by adding the Exterior Façade Accents (wood and stone accents), as seen below. Be sure to review the external renderings to see the official recommendation for your location.

If your building is currently any of the items below, you may be exempt from this step:

- *Made of materials that create vertical lines/slats*
- *Traditionally brick or texture/decorative stone*
- *Zoning won't allow for updates*

### WOOD SLAT

The Wood Slat Accents will serve as the front entrance facade. There are different textures available depending on the remaining funds available.

The approved exterior slats should be an All-Weather System Siding - Tongue & Groove US09 (5.5 x .5") in Teak or a similar color.

### EXTERIOR STACKED STONE

The approved stacked stone is **Boral Versetta Stacked Stone**, but there is flexibility in material selection in order to deliver the best exterior. If you would like to suggest a different product, be sure to submit it as a part of your proposal.

The stacked stone is only necessary for the front of the shop and should be level with the windows to the ground across the entire front of the shop where there are no wood slats.



**Wood Slat Accent**



**Boral Versetta Stacked Stone**

# PROJECT CONSTITUTION BUDGET WORKSHEET

Please use the budget below for reference when filling out the proposal.

		TOTAL AVAILABLE FUNDS	\$
REQUEST EXEMPTION		ESTIMATED COST	BALANCE AVAILABLE
	Exterior Paint		
	Exterior Wall Signs		
	Exterior Fascial Panels		
	Interior Wall Paint		
	Interior Floors		
	Meineke Wall		
	Meineke Kiosk(s)		
	Hospitality Station		
	Lobby Chairs		
	Bay Title Lights		
	Pole Sign		
	Meineke Work Station		
	Exterior Façade Accent		
		<b>FINAL BALANCE</b>	



**meineke**<sup>®</sup>  
DOING CAR CARE RIGHT ✓