



PROJECT

2048 FRONT STREET- OLDE TOWN

DATE **OCTOBER 1ST OPEN**

CLIENT **ERICA WILLIAMS**



1.5ft Tall

2ft Tall x 1.5 ft Wide

9 in step

PEDICURE PLATFORM DIMENSIONS

25 FT WIDE X 1.5 FT TALL- 2 STEPS 9 INCHES APART NEXT TO EVERY STATION. CAN DO FLAT ACROSS

LaToscana Reversible 24-in x 18-in White Single-Basin Fireclay Standard Farmhouse Sink (Lowes)

HERRINGBONE PATTERN WAINSCOTING ON BACK WALL. WHITE CAN TRACK LIGHTS ABOVE PEDICURE AREA

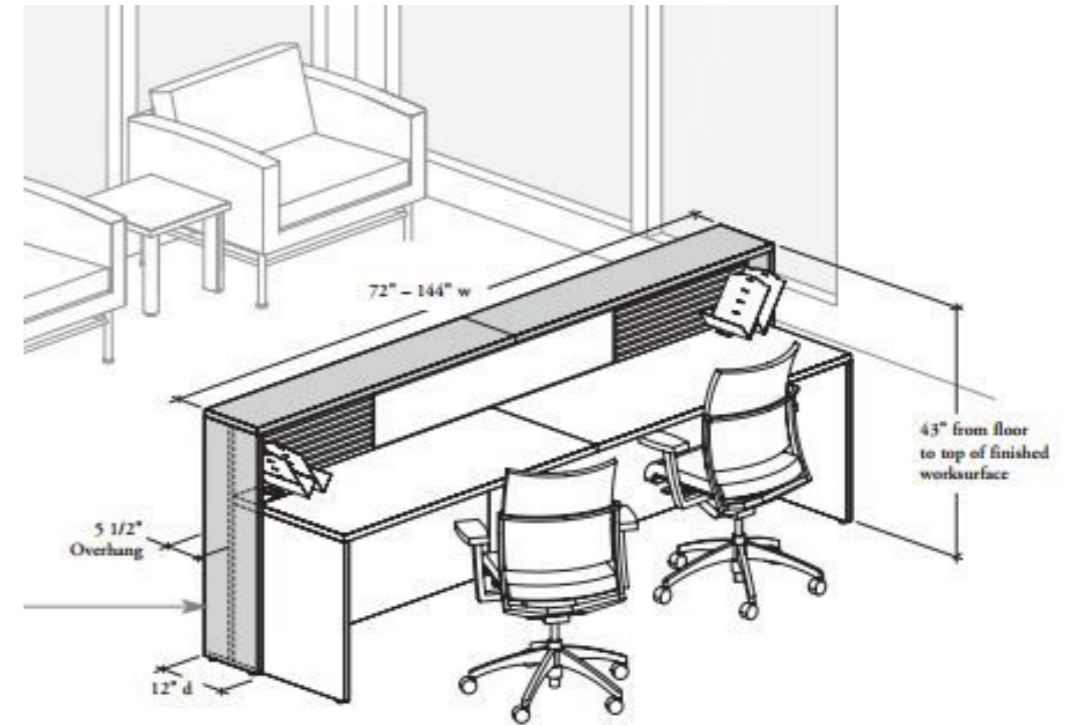


Cabinet Depth (Inches)	19.5
Common Depth (Inches)	20
Cabinet Height (Inches)	32.7
Cabinet Width (Inches)	59.1
Common Width (Inches)	60
Vanity Width (Inches)	60
Top Width/Sink Count	60-in double sink
Maximum Sink Depth (Inches)	7

HAIR WASHING BOWLS AND VANITY

25"W X 55.5"D (NOT INCLUDING OTTOMAN) X 34"H (ALREADY PURCHASED TWO)

MTD VANITIES WHITE DOUBLE SINK VANITY WITH WHITE ENGINEERED STONE TOP (COMMON: 60-IN X 20-IN)



RECEPTION DESK- TWO TIERS

6FT WIDE X 3.5 FT TALL

Chandelier- Quoizel Platform 16-in Black with Gold Hardwired Multi-Light Pendant (Lowes)

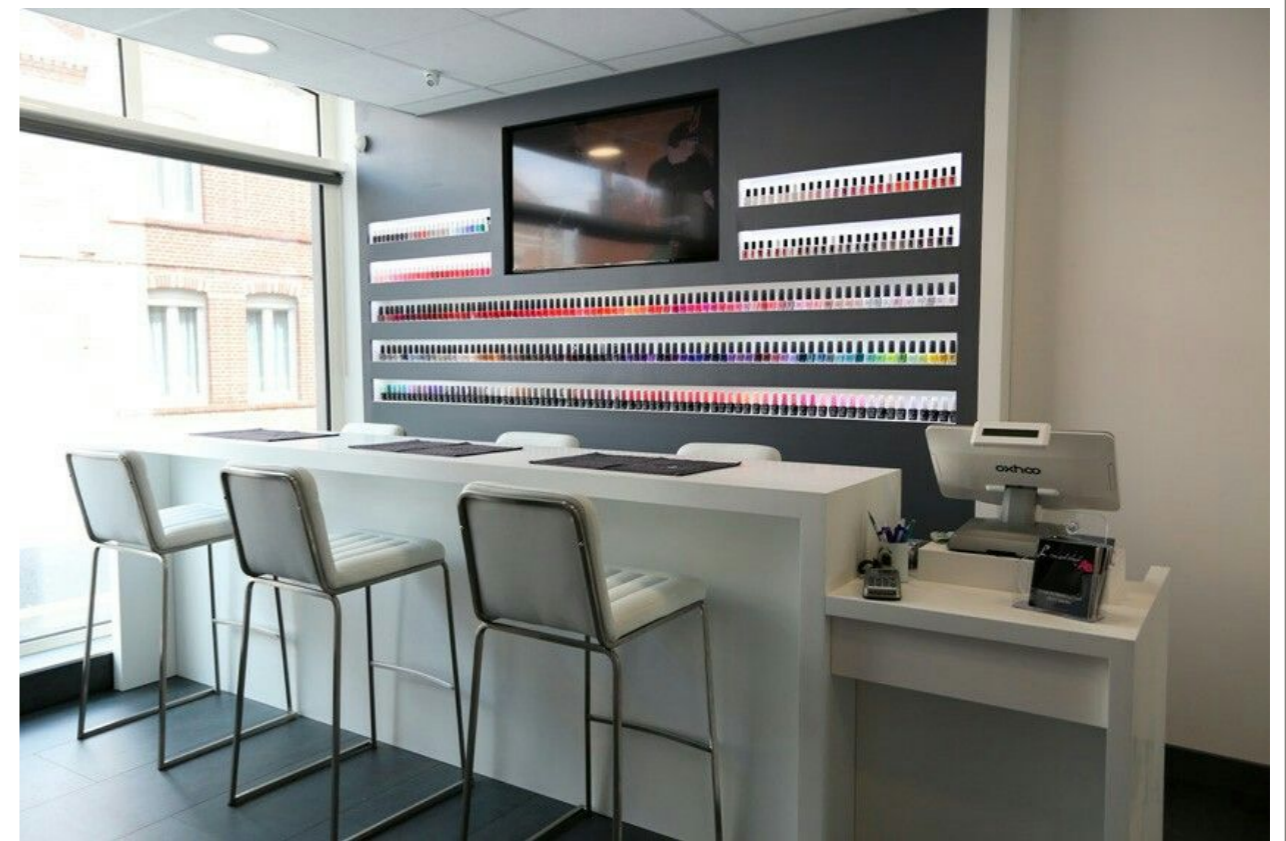
2 Fixtures for Waiting Room- (Quoizel Platform 14-in W Black With Gold No Glass Semi-Flush Mount Light (Lowes)



MAKE-UP BAR

12FT WIDE X 3.5 FT TALL

Lighting- White Builder Basic 8-Light Bath Bar (Wayfair)



MANICURE

18FT WIDE X 3.5 FT HIGH (LOCATED NEXT TO MAKE UP BAR- 5FT SEPARATION IN BETWEEN)



BAR-

6FT WIDE X 3.5 FT TALL (LOCATED ON BACK WALL). WANT FOOT RAIL ON THIS BAR.



WALLS

TWO WALLS 6FT WIDE X 9 FT DEPTH X 8 FT HIGH