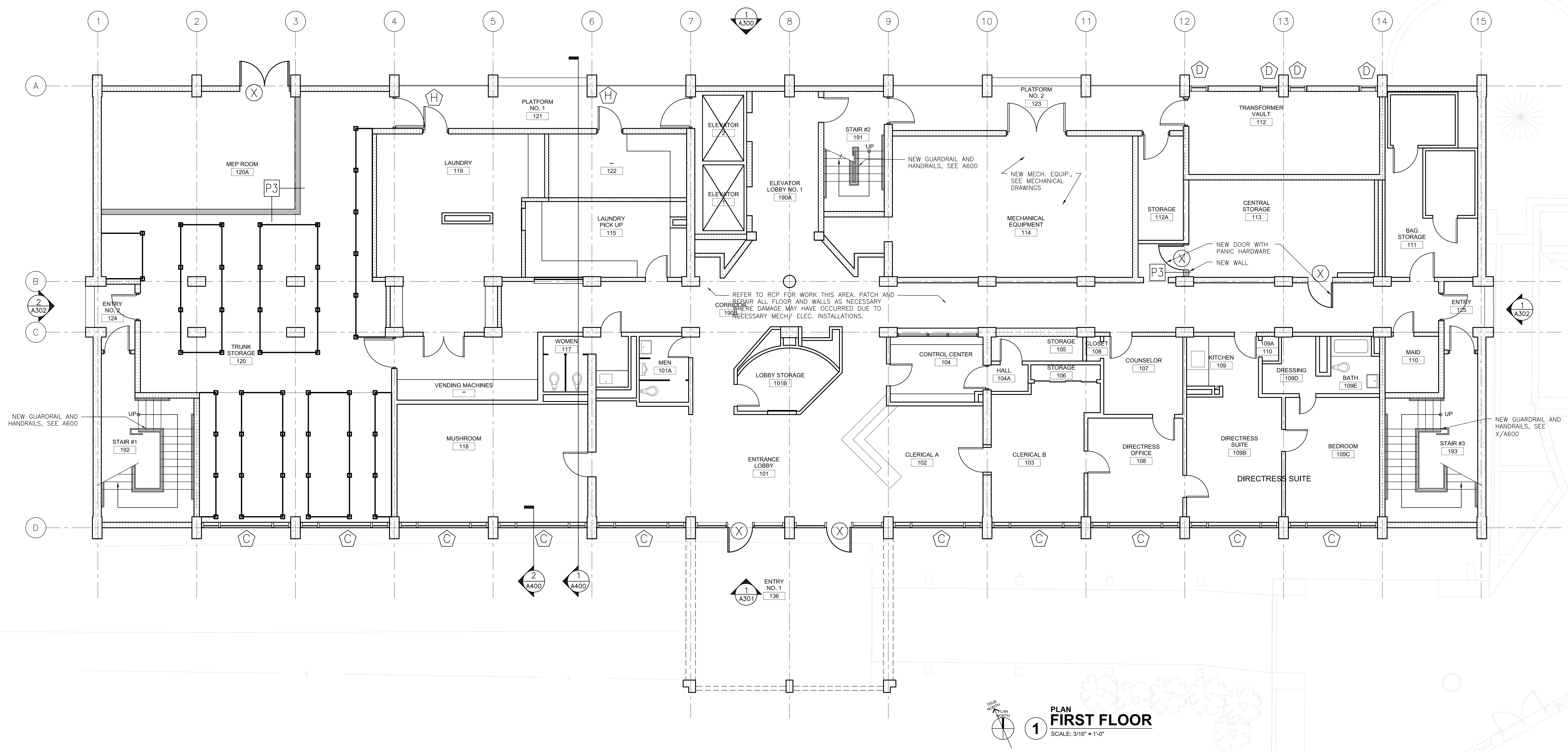


OWNER:
 LOYOLA UNIVERSITY NEW ORLEANS
 6363 St. Charles Avenue
 New Orleans, Louisiana 70118
 Tel. (504) 865-3034
 Fax. (504) 865-3851

STRUCTURAL ENGINEER:
 MORPHY-MAKOFSKY, INC.
 338 North Jefferson Davis Pkwy.
 New Orleans, LA 70119
 Tel. (504) 488-1317

MEP ENGINEER:
 GVA Engineering, PLLC
 2615 Edeborn Ave. Suite C
 Metairie, LA 70002
 Tel. (504) 780-9330



INTERIM REVIEW DOCUMENTS

THE DESIGN DOCUMENTS DEPICTED THEREIN ARE INCOMPLETE AND MAY NOT BE USED FOR REGULATORY APPROVAL, PERMIT, OR CONSTRUCTION.

ARCHITECT'S NAME:
 REGISTRATION NO. 00000

Revisions	#	DESCRIPTION	DATE

Key Plan

THE LOYOLA COLLABORATIVE
 KELL MUÑOZ + MATHES BRIERRE

1017 North Main Suite 300
 San Antonio, Texas 78212
 Tel. (210) 349-1163
 Fax. (210) 525-1038
 munoz@kellmunoz.com

201 St. Charles Avenue, Forty First Floor
 New Orleans, Louisiana 70170-4100
 Tel. (504) 586-9303
 Fax. (504) 582-1305
 architecture@mathesbrierre.com

Project Title

BUDDIG HALL

Loyola University
 New Orleans

Designed by
NC

Checked by

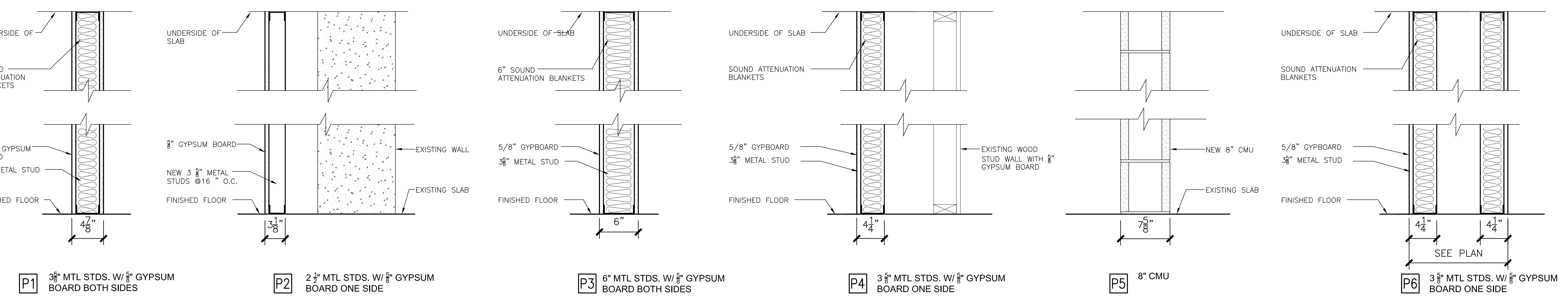
Drawn by
JB

Date
AUGUST 23, 2011

Sheet Title
1ST FLOOR PLAN

Project No.
10664

Sheet No.
A-101



2 PARTITION TYPES
 SCALE: 1 1/2\"/>

PLAN GENERAL NOTES

- 1. VERIFY ALL EXISTING DIMENSION IN FIELD

FLOOR PLAN LEGEND

- EXISTING WALL TO REMAIN
- EXISTING CMU WALL TO REMAIN
- EXISTING CMU WALL TO REMAIN
- NEW WALLS
- WINDOW TAG, SEE SCHEDULE A/220
- P# PARTITION TAG, SEE SCHEDULE 2/A/101
- DOOR TAG, SEE SCHEDULE A/200