

OWNER:
LOYOLA UNIVERSITY NEW ORLEANS
 6345 St. Charles Avenue
 New Orleans, LA 70118
 Tel. (504) 865-5034
 Fax. (504) 865-3851

STRUCTURAL ENGINEER:
KORNYI-JAKOBSKY, INC.
 300 Poydras Street, Suite 2000
 New Orleans, LA 70119
 Tel. (504) 486-1517

MEP ENGINEER: **SLC**
 2615 Eschborn Ave., Suite C
 Metairie, LA 70002
 Tel. (504) 885-9334

INTERIM REVIEW
 DOCUMENTS

THIS DOCUMENT IS NOT TO BE USED FOR CONSTRUCTION. IT IS FOR REVIEW ONLY. ANY CHANGES TO THIS DOCUMENT MUST BE APPROVED BY THE ARCHITECT.

DATE: 08/23/2011

#	DESCRIPTION	DATE

Key Plan

THE LOYOLA COLLABORATIVE
 KELL WUNOZ + MATTHEW BIERRE

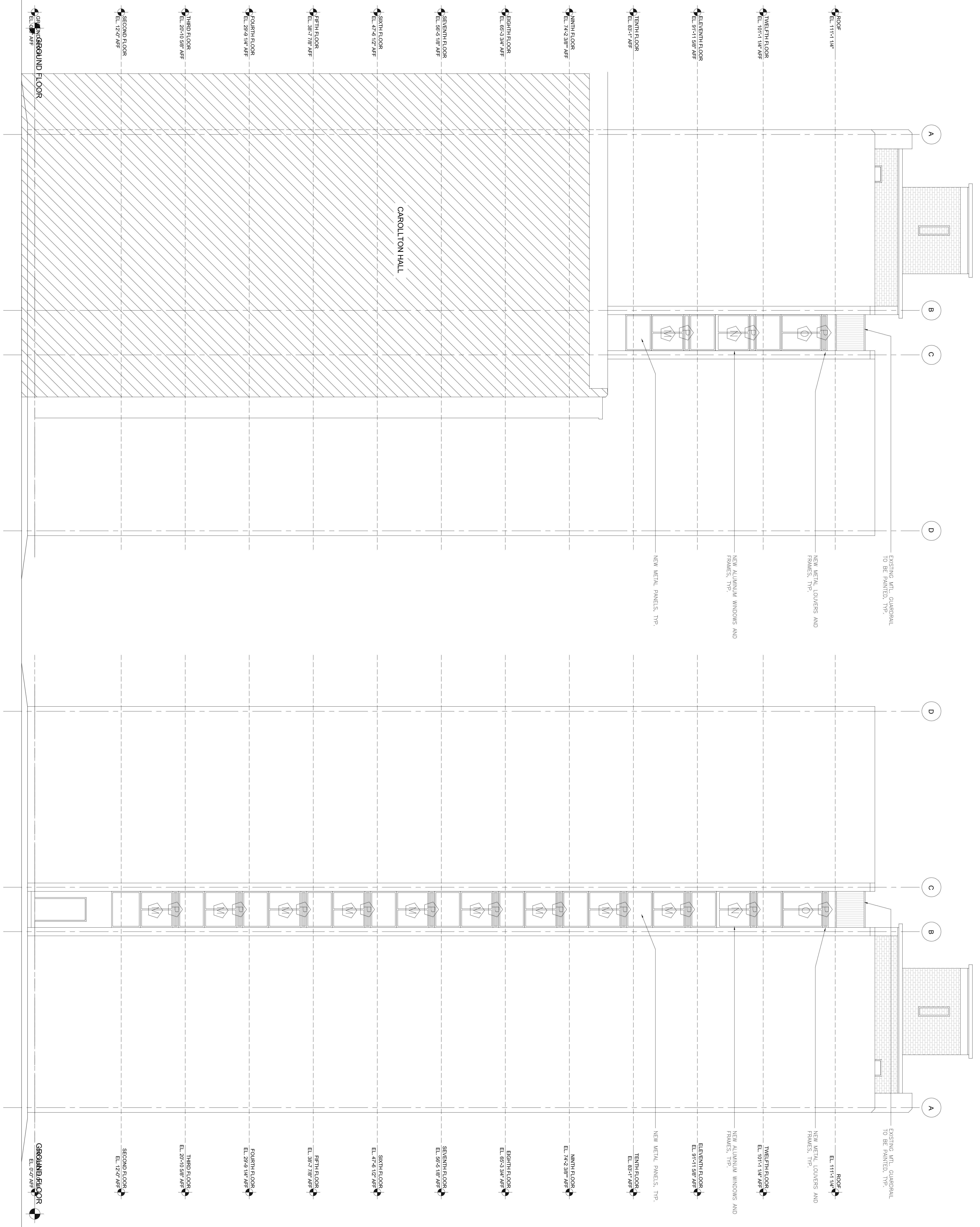
1017 North Main Suite 300
 San Antonio, Texas 78212
 Tel. (214) 225-1038
 Fax. (214) 225-1038
 munoza@kellwunoz.com

201 St. Charles Avenue, Fifth Floor
 New Orleans, Louisiana 70174-4100
 Tel. (504) 585-2332
 Fax. (504) 585-2333
 architecture@matthewbierre.com

BUDDIG HALL

Loyola University
 New Orleans

Designed by NC	Checked by ---
Drawn by JB	Date AUGUST 23, 2011
Sheet Title ELEVATION	Project No. 10664
Sheet No. 1	Sheet No. A-302



1 ELEVATION EAST ELEVATION
 SCALE: 3/16" = 1'-0"

2 ELEVATION WEST ELEVATION
 SCALE: 3/16" = 1'-0"

GENERAL NOTES

1. X

LEGEND

WINDOW TAG, SEE SCHEDULE XXXX