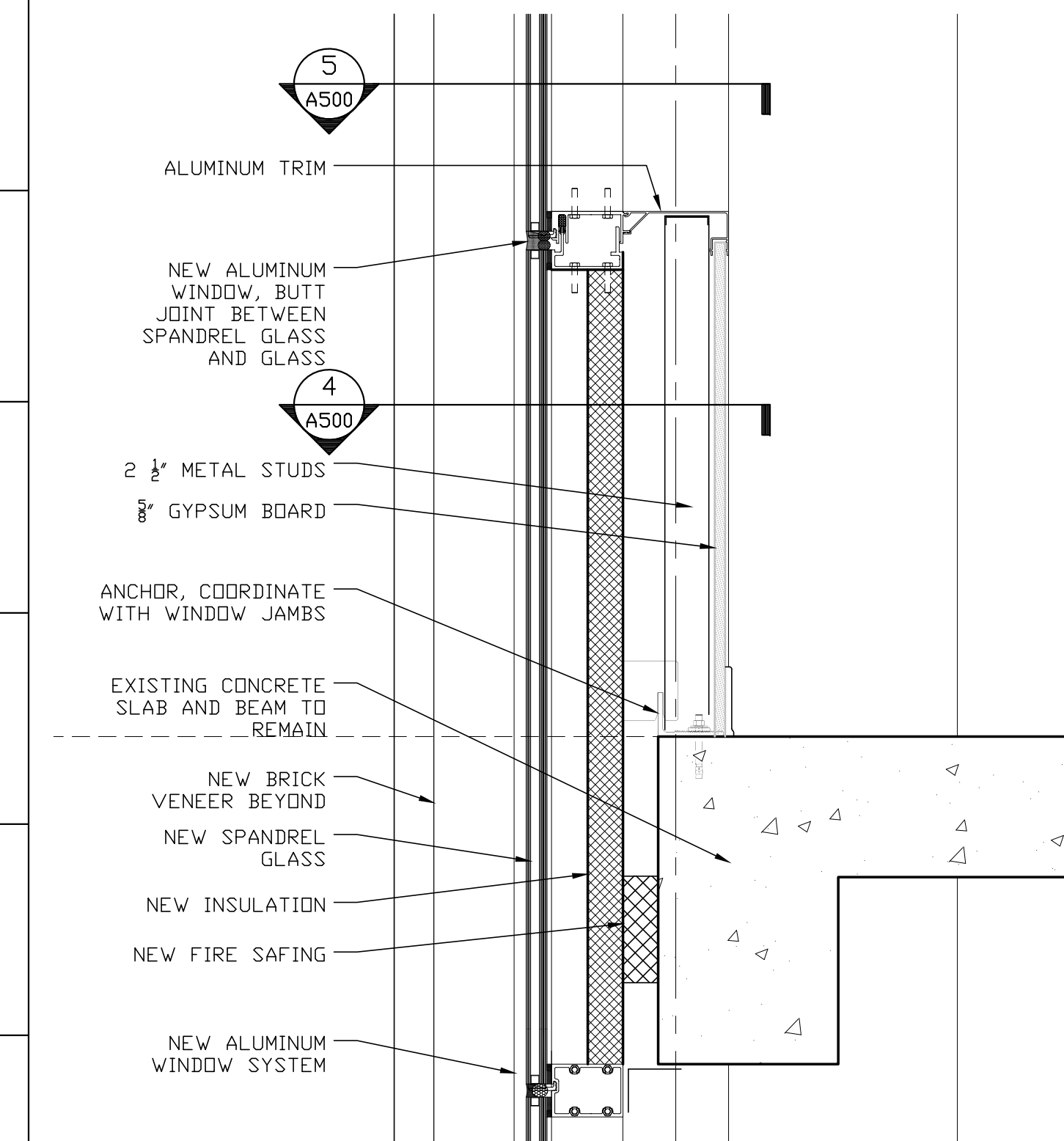
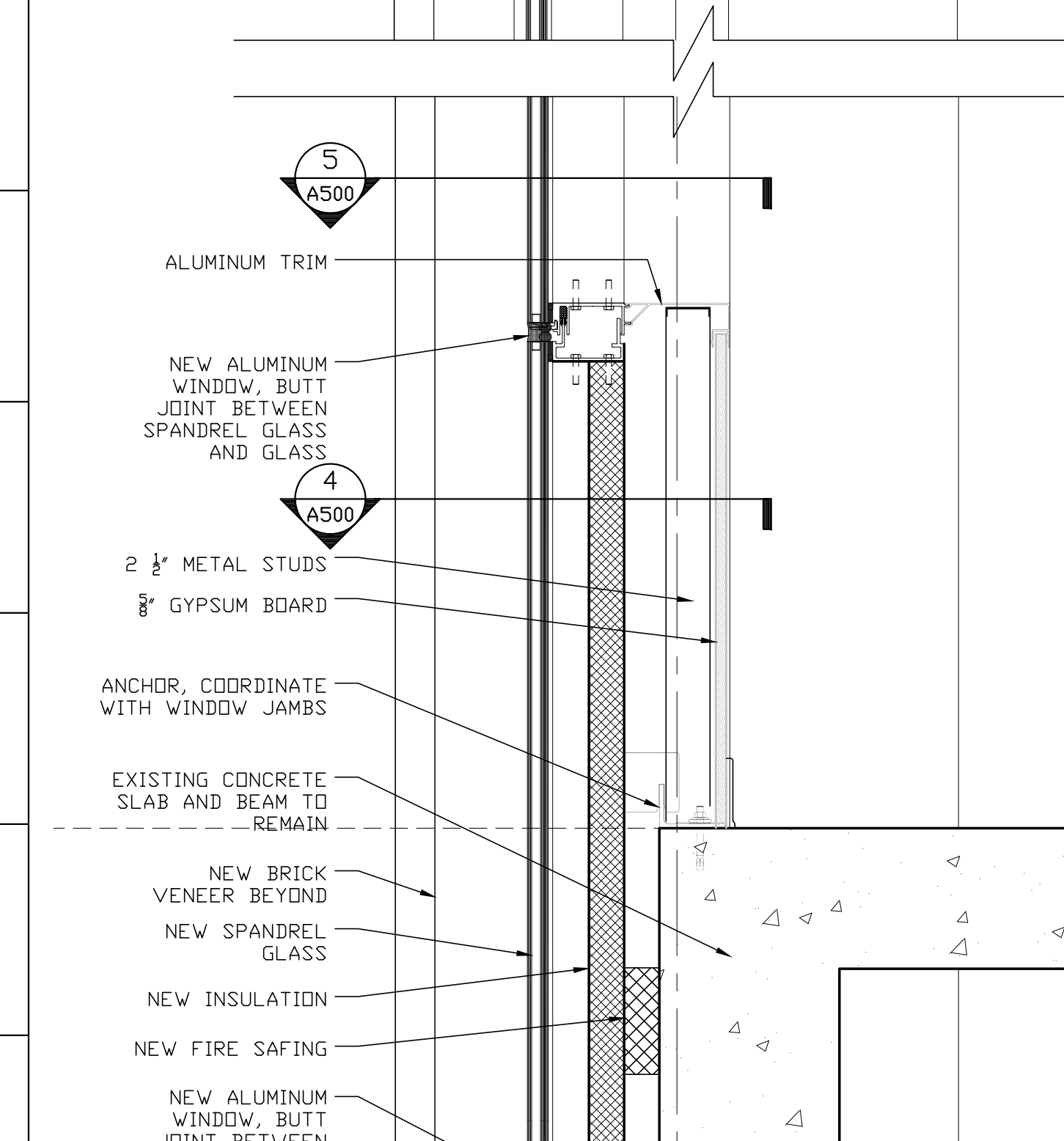


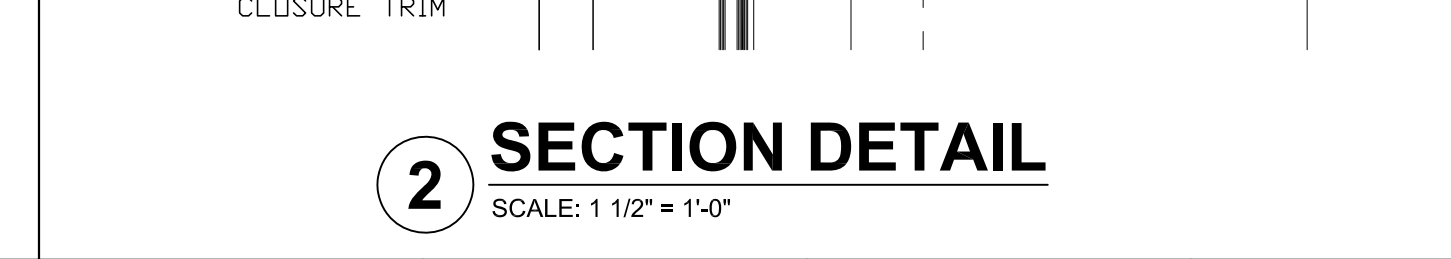
1 SECTION DETAIL
SCALE: 1 1/2" = 1'-0"



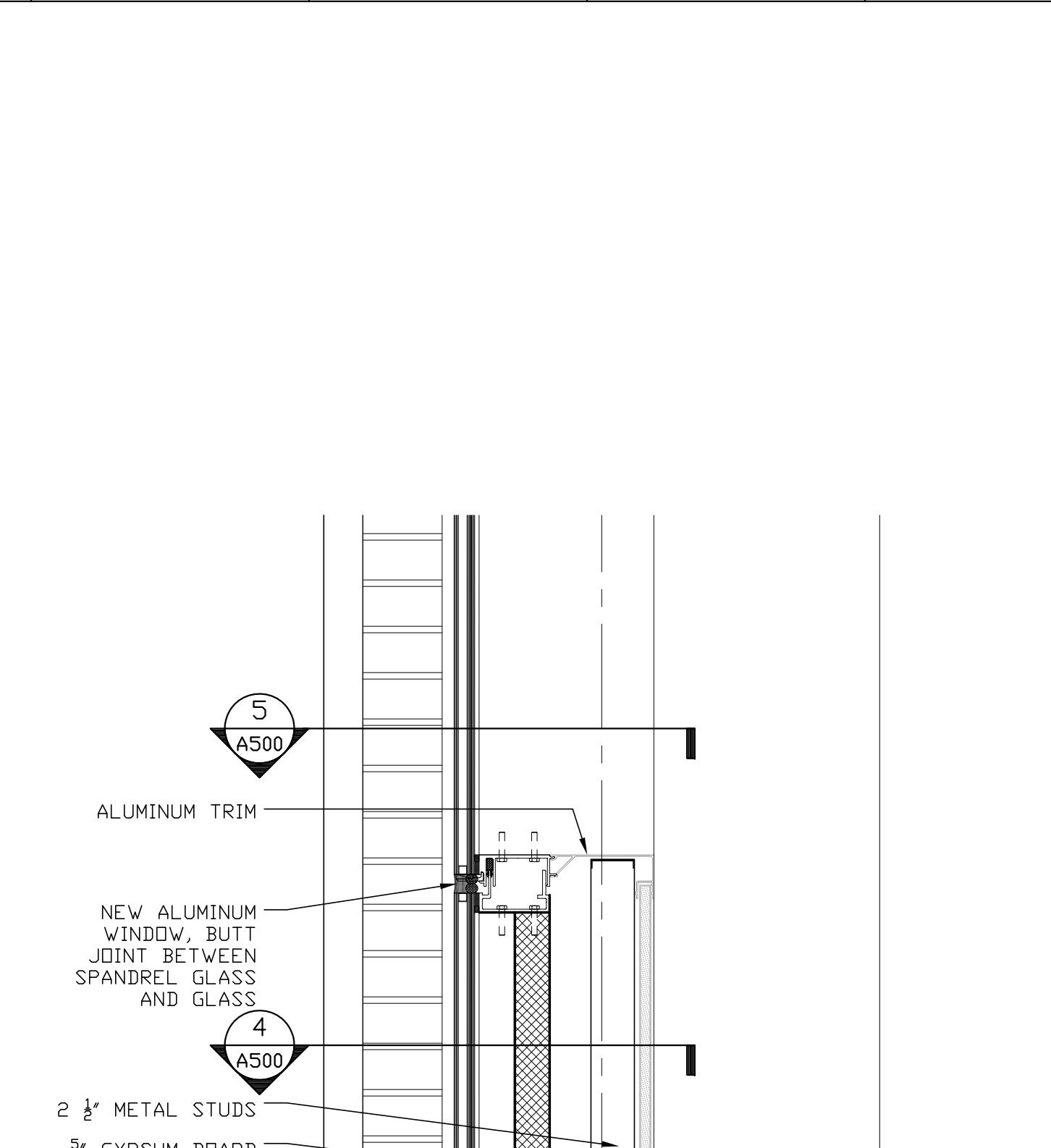
2 SECTION DETAIL
SCALE: 1 1/2" = 1'-0"



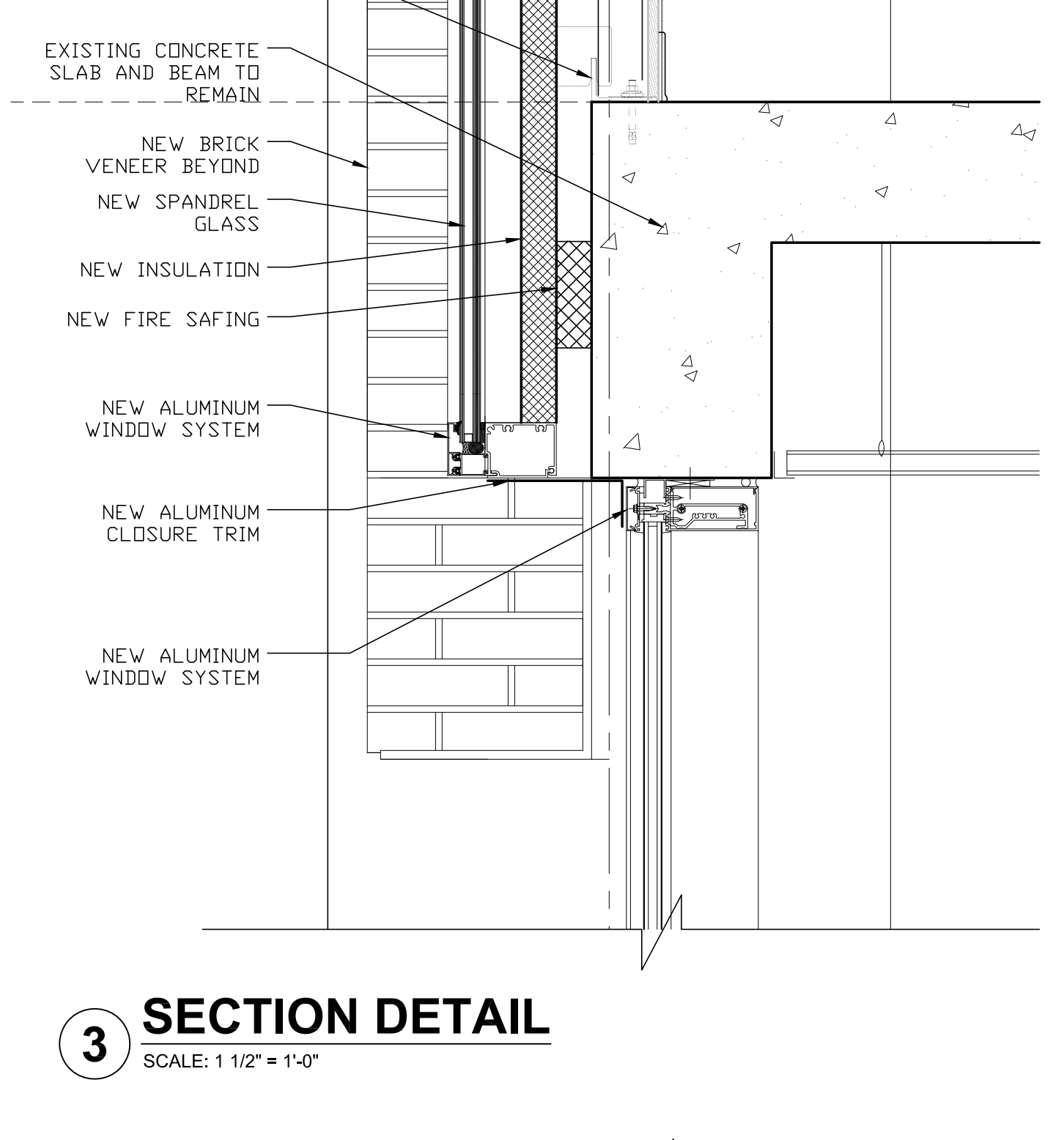
3 SECTION DETAIL
SCALE: 1 1/2" = 1'-0"



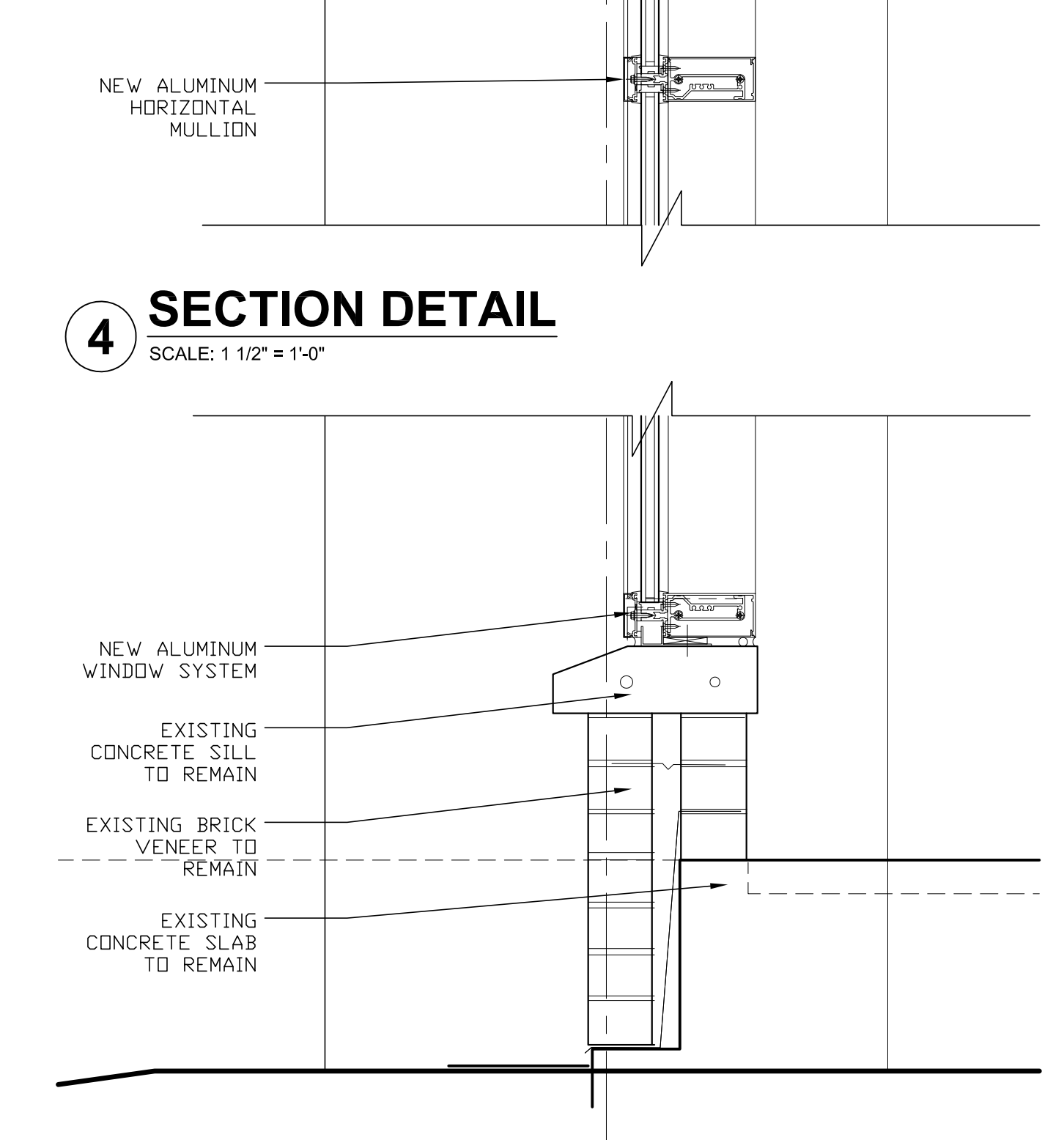
4 SECTION DETAIL
SCALE: 1 1/2" = 1'-0"



5 SECTION DETAIL
SCALE: 1 1/2" = 1'-0"



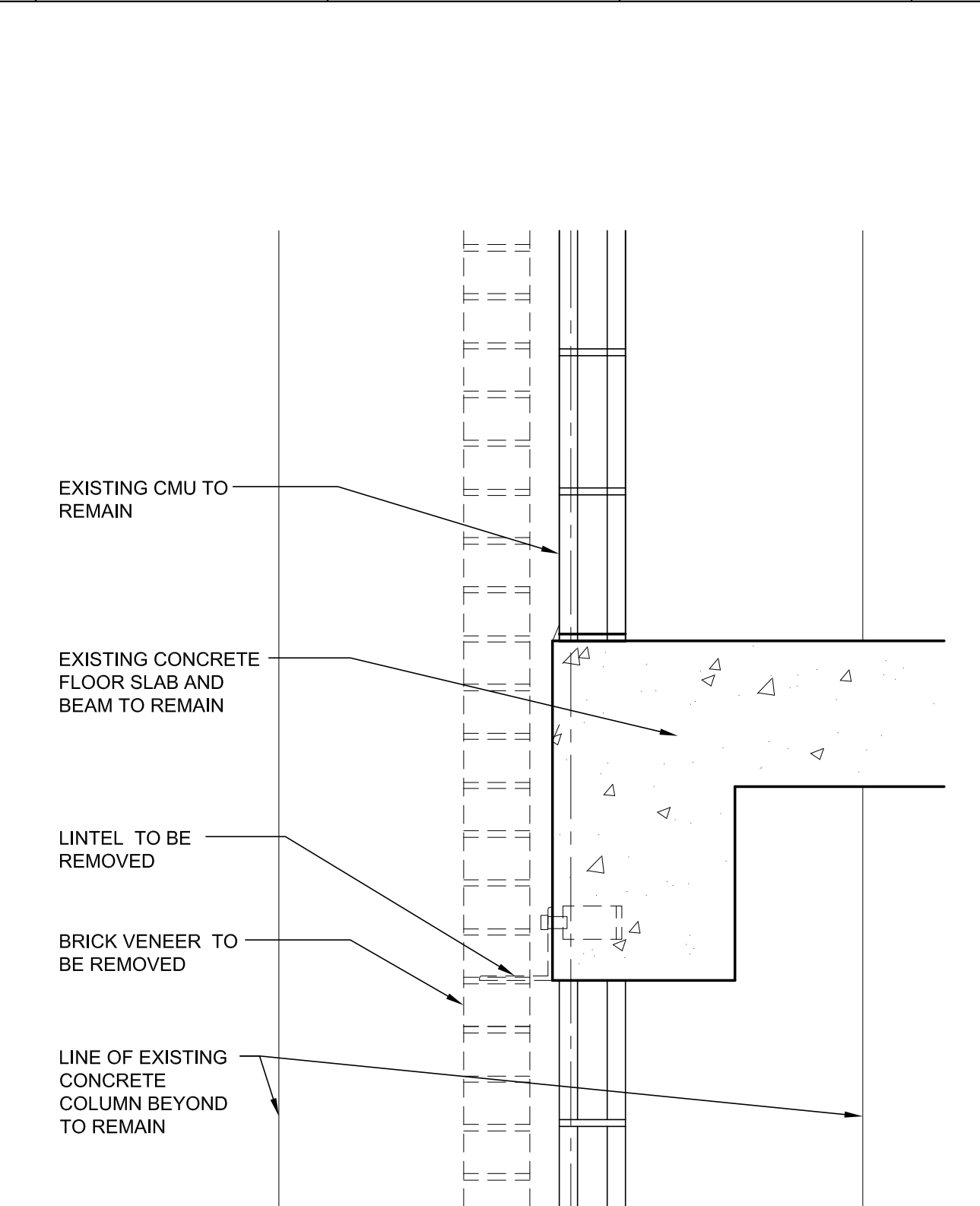
6 SECTION DETAIL
SCALE: 1 1/2" = 1'-0"



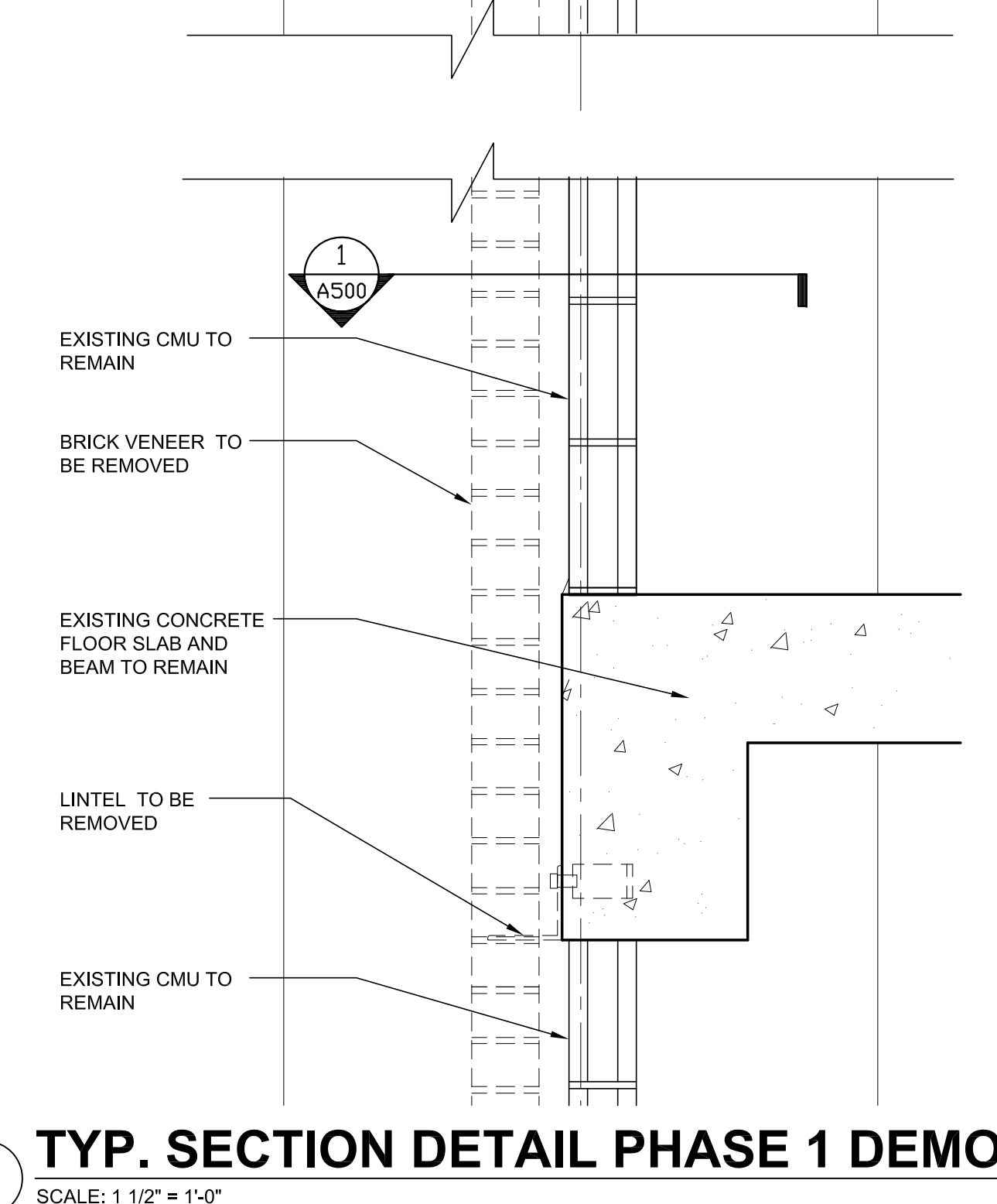
7 SECTION DETAIL
SCALE: 1 1/2" = 1'-0"



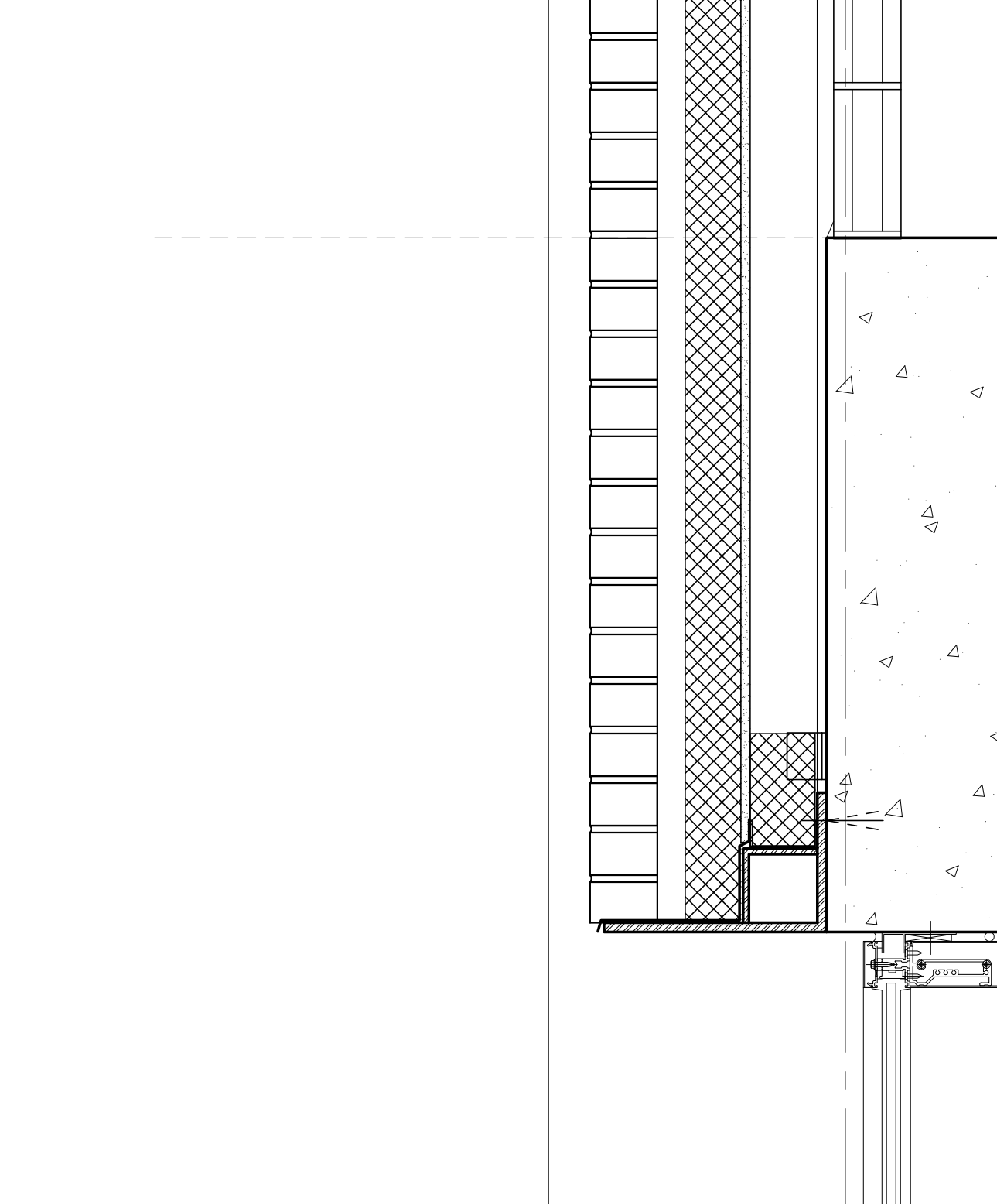
8 SECTION DETAIL
SCALE: 1 1/2" = 1'-0"



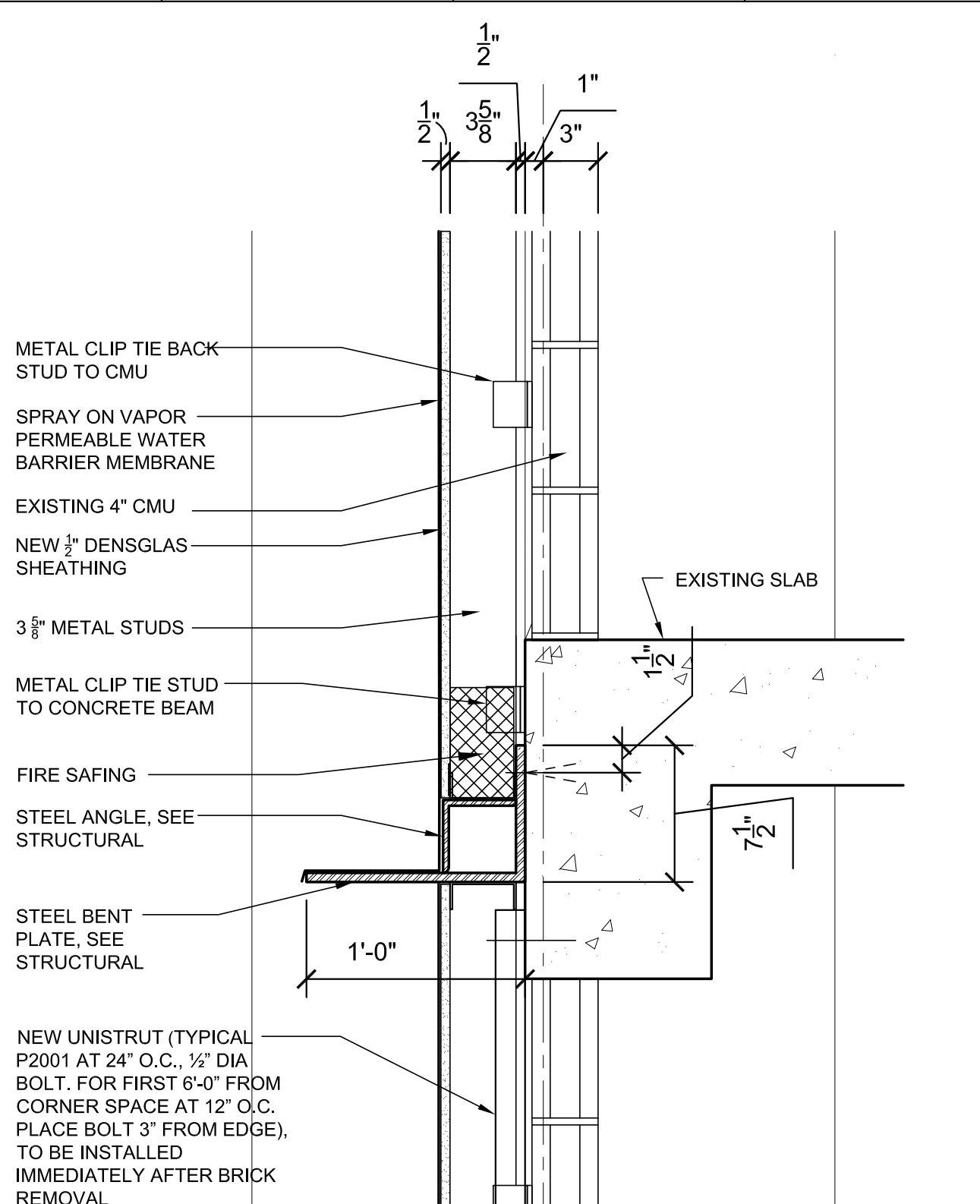
6 TYP. SECTION DETAIL PHASE 1 DEMO
SCALE: 1 1/2" = 1'-0"



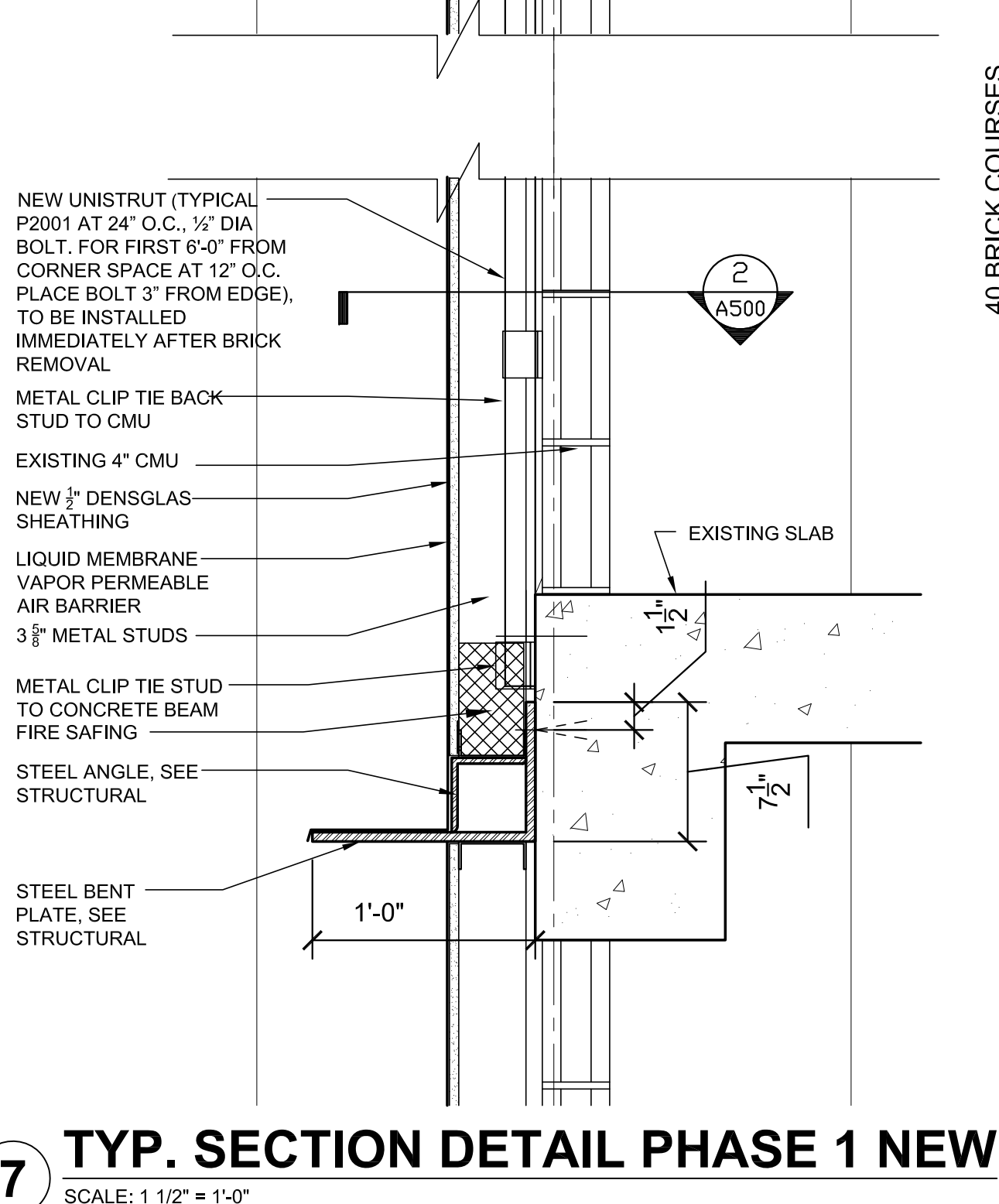
7 TYP. SECTION DETAIL PHASE 1 NEW
SCALE: 1 1/2" = 1'-0"



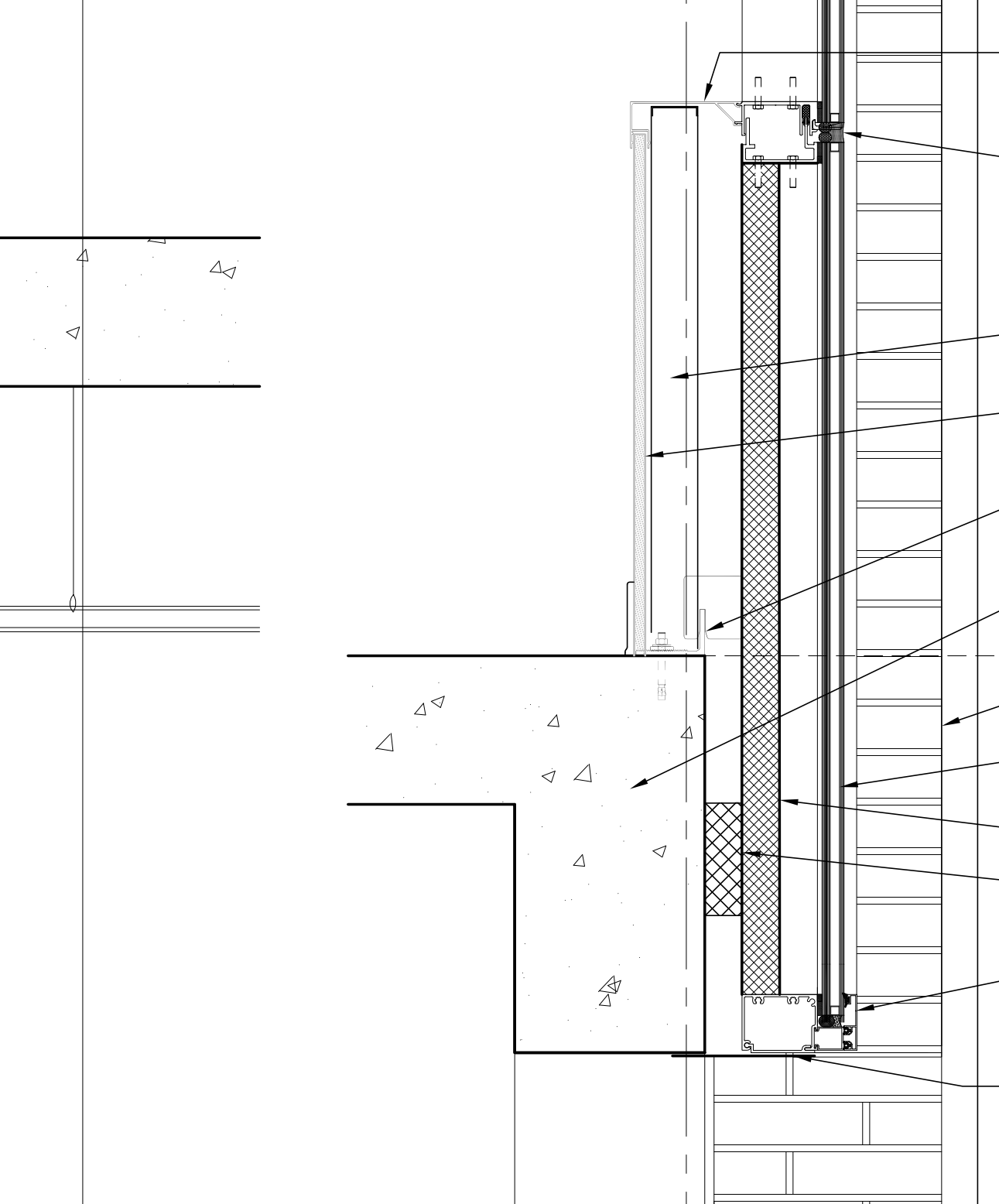
9 TYP. SECTION DETAIL PHASE 2 NEW
SCALE: 1 1/2" = 1'-0"



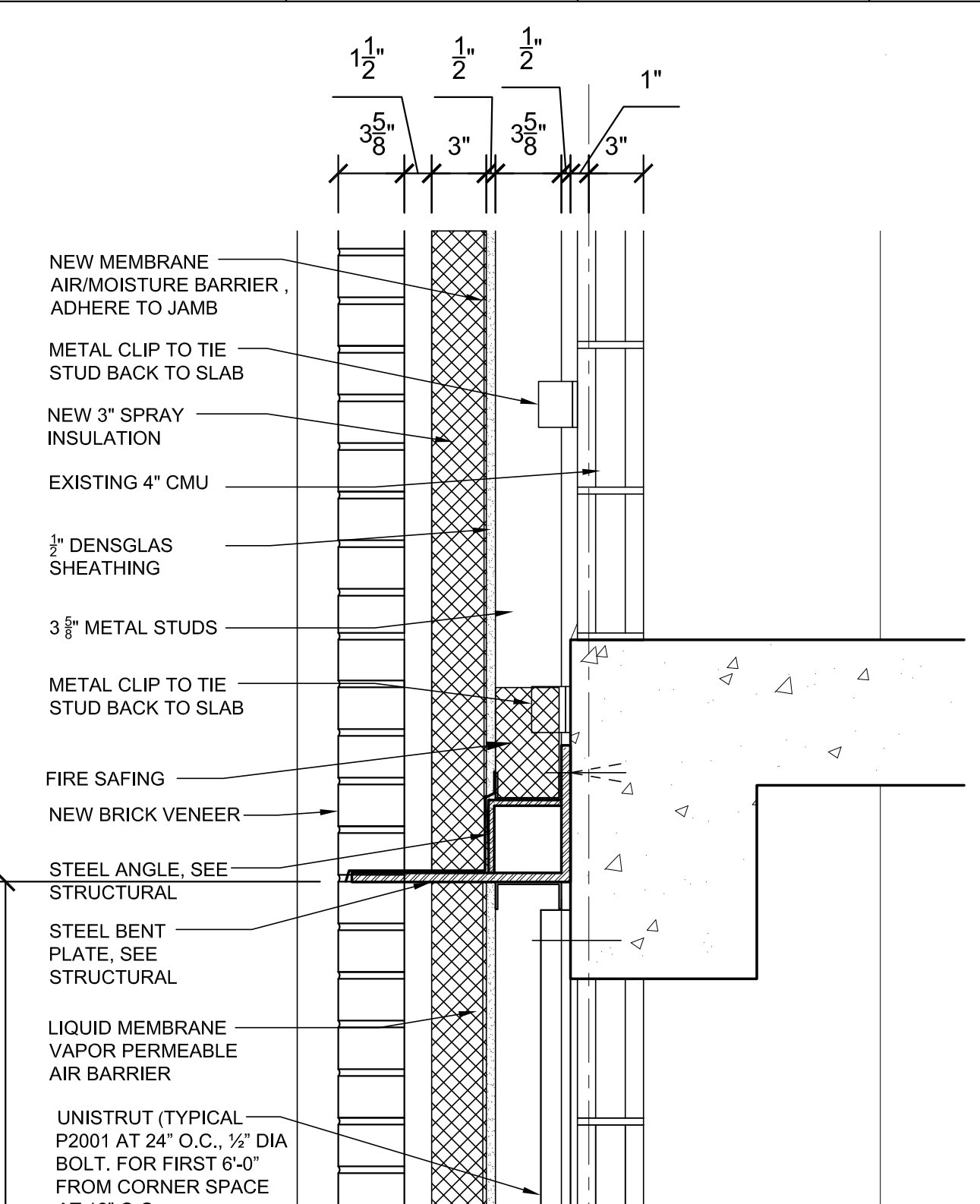
7 TYP. SECTION DETAIL PHASE 1 NEW
SCALE: 1 1/2" = 1'-0"



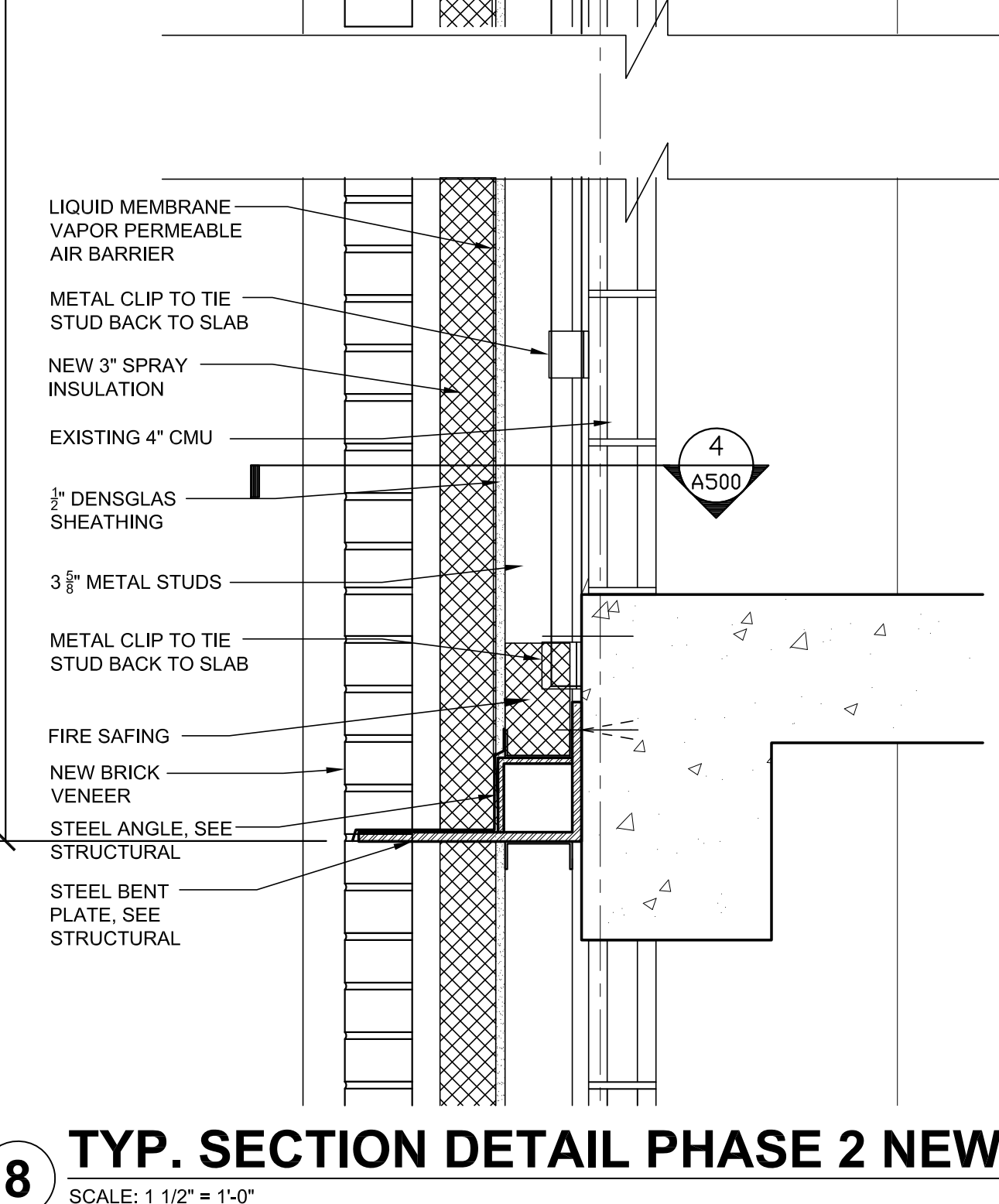
7 TYP. SECTION DETAIL PHASE 1 NEW
SCALE: 1 1/2" = 1'-0"



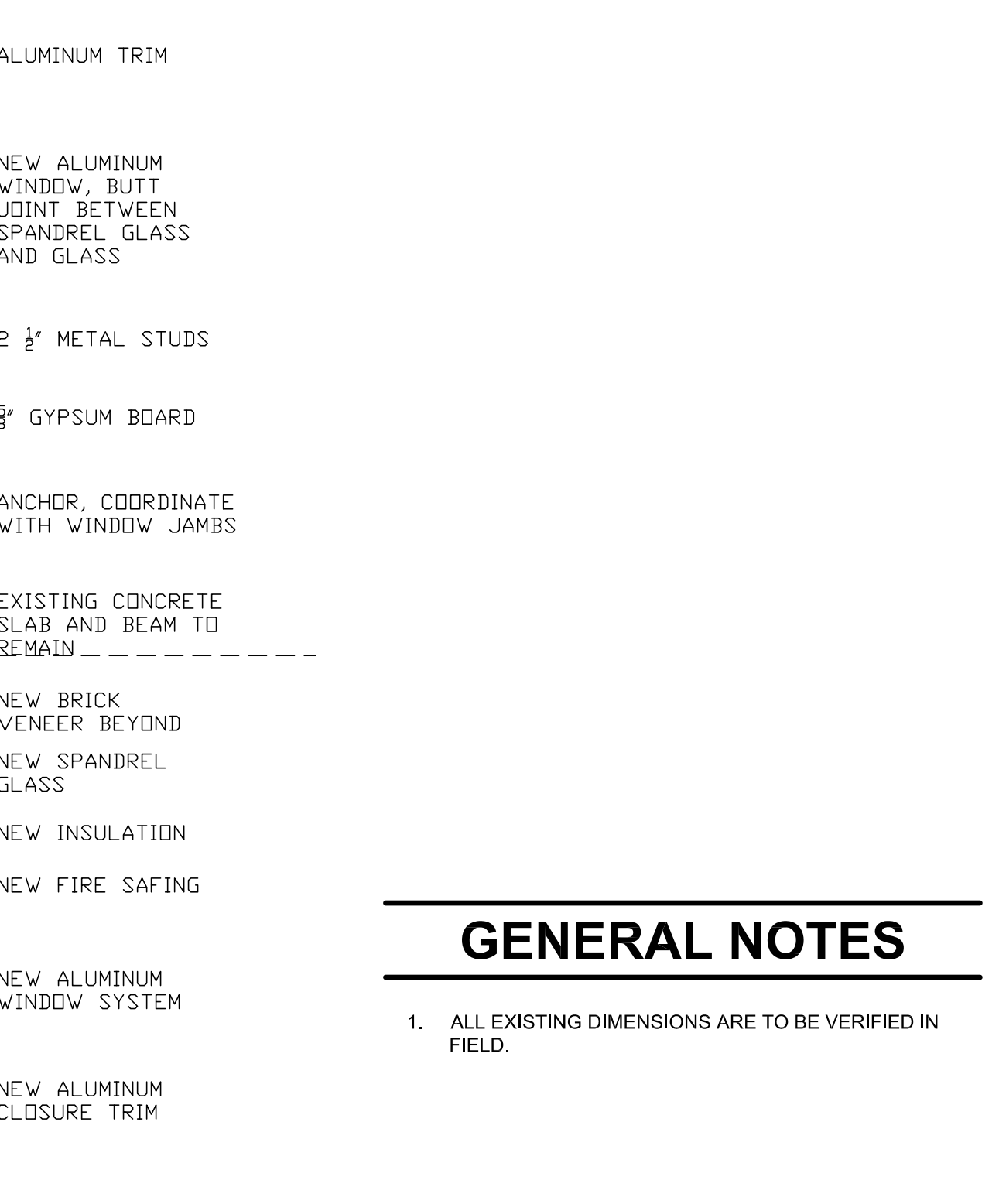
7 TYP. SECTION DETAIL PHASE 1 NEW
SCALE: 1 1/2" = 1'-0"



8 TYP. SECTION DETAIL PHASE 2 NEW
SCALE: 1 1/2" = 1'-0"



8 TYP. SECTION DETAIL PHASE 2 NEW
SCALE: 1 1/2" = 1'-0"



8 TYP. SECTION DETAIL PHASE 2 NEW
SCALE: 1 1/2" = 1'-0"

GENERAL NOTES

1. ALL EXISTING DIMENSIONS ARE TO BE VERIFIED IN FIELD.

OWNER:
LOYOLA UNIVERSITY NEW ORLEANS
6363 St. Charles Avenue
New Orleans, Louisiana 70118
Tel. (504) 865-3034
Fax. (504) 865-3851

STRUCTURAL ENGINEER:
MORPHY-MAROKOSKY, INC.
336 North Jefferson Davis Pkwy.
New Orleans, LA 70119
Tel. (504) 488-1317

MEP ENGINEER:
GVA Engineering, PLLC
2615 Edeborn Ave. Suite C
Metairie, LA 70002
Tel. (504) 780-9330

INTERIM REVIEW DOCUMENTS

THE DESIGN DOCUMENTS DEPICTED THEREIN ARE INCOMPLETE AND MAY NOT BE USED FOR REGULATORY APPROVAL, PERMIT, OR CONSTRUCTION.

(ARCHITECT'S NAME)
REGISTERED NO. 00000

Revisions	#	DESCRIPTION	DATE

Key Plan

THE LOYOLA COLLABORATIVE
KELL MUÑOZ + MATHES BRIERRE

1017 North Main Suite 300
San Antonio, Texas 78212
Tel. (210) 349-1163
Fax. (210) 525-1038
munoz@kellmunoz.com

201 St. Charles Avenue, Forty First Floor
New Orleans, Louisiana 70170-4100
Tel. (504) 586-9303
Fax. (504) 582-1305
architecture@mathesbrierre.com

Project Title

BUDDIG HALL

Loyola University
New Orleans

Designed by
Checked by
Date
OCT. 6, 2011

Sheet Title
SECTION DETAILS

Project No.
Sheet No.
10664
A-450