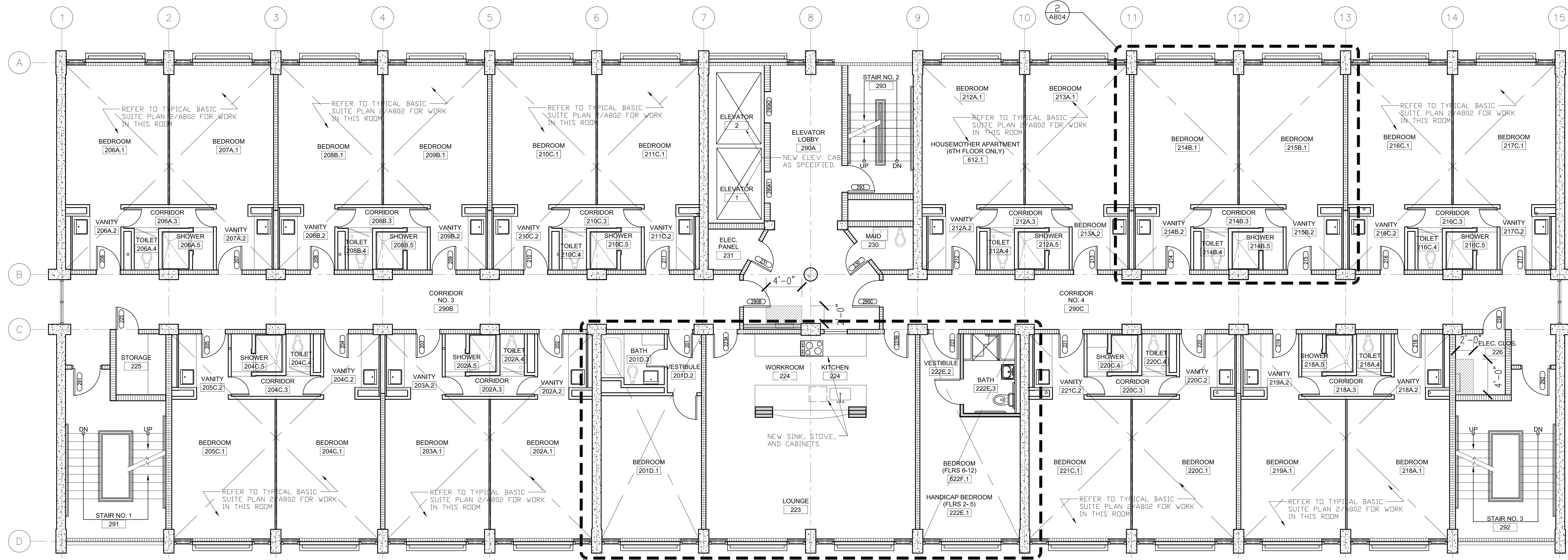


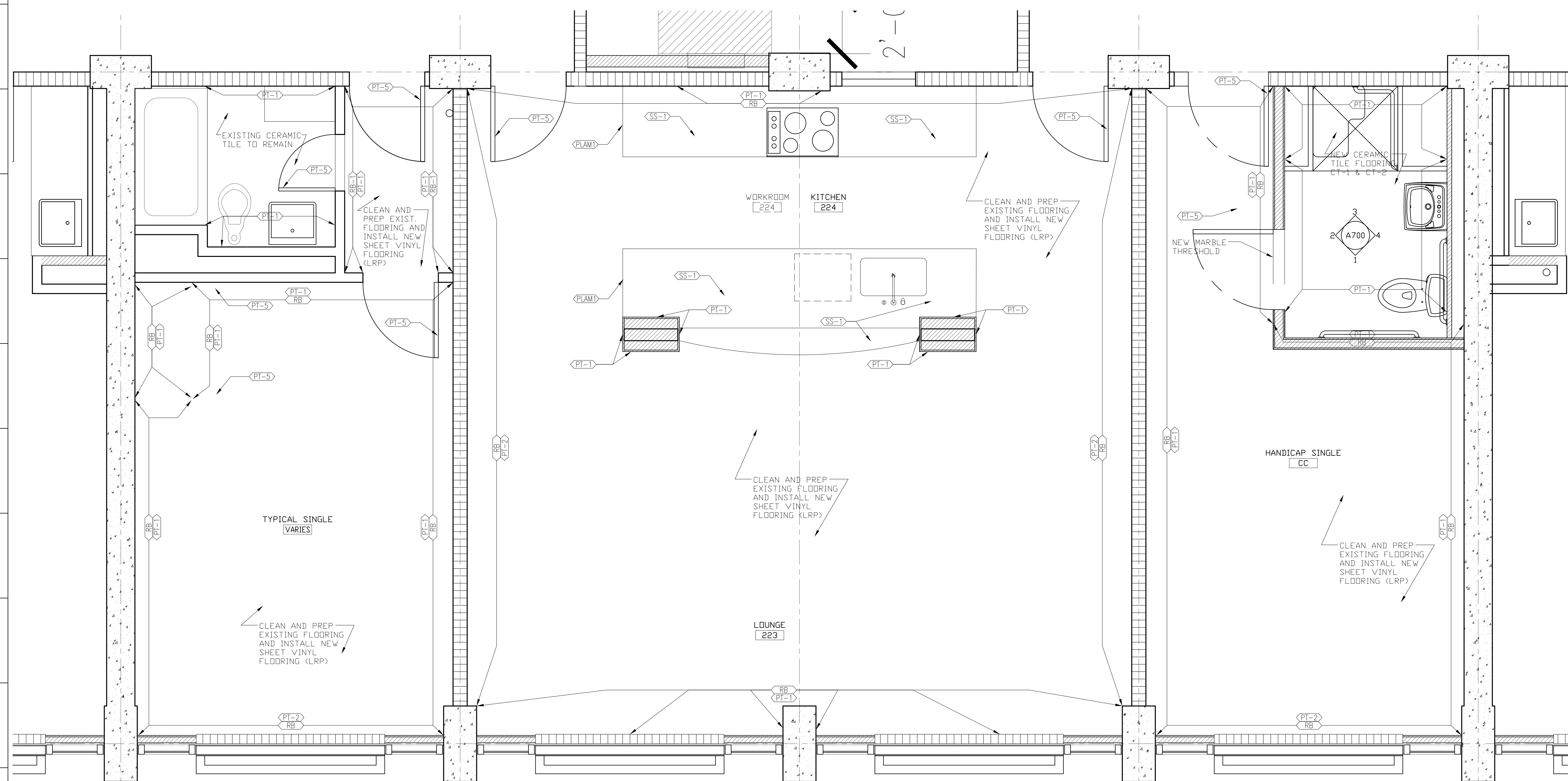
OWNER: LOYOLA UNIVERSITY NEW ORLEANS
 6363 St. Charles Avenue
 New Orleans, Louisiana 70118
 Tel. (504) 865-3034
 Fax. (504) 865-3851

STRUCTURAL ENGINEER:
 MORPHY-MAKOFSKY, INC.
 336 North Jefferson Davis Pkwy.
 New Orleans, LA 70119
 Tel. (504) 488-1317

MEP ENGINEER:
 GVA Engineering, PLLC
 2615 Edouard Ave. Suite C
 Metairie, LA 70002
 Tel. (504) 780-9330



1 PLAN SECOND-ELEVENTH FLOOR
 SCALE: 3/16" = 1'-0"



2 ENLARGED PLAN TYP. SINGLE/LOUNGE/HANDICAP SINGLE
 SCALE: 1/2" = 1'-0"

FINISH LEGEND

MARK	DESCRIPTION	SPEC. SECTION	REMARKS
FLOOR			
LRP	LUXURY RESILIENT PLANKS MANUFACTURE: ARTISTEK FLOORS CENTENNIAL PLUS PRODUCT: LUXURY RESILIENT PLANKS PATTERN COLOR: TBS SIZE: 6X6"	09650	
RB	RUBBER BASE MANUFACTURE: ROPPE PRODUCT: RUBBER, 1/4" STRAIGHT AT CARPET, COVER AT RESILIENT COLOR: TBS	09650	
CT-2	CERAMIC TILE BASE MANUFACTURE: DAL TIE PRODUCT: SEMI GLOSS MATTE COVE BASE COLOR: TBS SIZE: TBS	09300	
WALL			
PT-1	PAINT ON GYP BOARD (PRIMARY WALL PAINT) MANUFACTURE: GILDEN PROFESSIONAL PAINT COLOR: TBS	09900	
PT-2	PAINT ON GYP BOARD (ACCENT WALL PAINT) MANUFACTURE: GILDEN PROFESSIONAL PAINT COLOR: TBS	09900	
PT-3	PAINT ON WOOD PANELING MANUFACTURE: GILDEN PROFESSIONAL PAINT COLOR: TBS	09900	
PT-EX	PAINT TO MATCH EXISTING COLOR	09900	
CT-1	CERAMIC FLOOR TILE MANUFACTURE: DAL TIE PRODUCT: KEYSTONE MOSAICS COLOR: TBS SIZE: TBS	09300	
CEILING			
PT-3	PAINT ON GYP BOARD (CEILING PAINT) MANUFACTURE: GILDEN PROFESSIONAL PAINT COLOR: TBS	09900	
ACP	ACOUSTICAL CEILING PANEL MANUFACTURE: ARMSTRONG PRODUCT: ULTIMA SQUARE LAY-IN SIZE: 24" X 24" SUSPENSION GRID: PRELUDE 15/16" EXPOSED TEE GRID	09500	
MILL WORK			
SS-1	SOLID SURFACE (COUNTERTOPS/ BACK SPLASH) MANUFACTURE: DUPONT PRODUCT: CORIAN PRICE GROUP: C OR D COLOR: TBS	06402	
PLAM-1	PLASTIC LAMINATE (CABINETS) MANUFACTURE: WILSONART COLOR: TBS	06402	
DOORS & FRAMES			
PT-5	PAINT MANUFACTURE: GILDEN PROFESSIONAL PAINT COLOR: TBS	09900	

- FINISH NOTES:**
- REFER TO REFLECTED CEILING PLANS FOR CEILING HEIGHTS & SPECIAL CONDITIONS & ACOUSTICAL CEILING TREATMENTS.
 - LEVELS 2 THRU 12: ALL MILLWORK CABINETS BE PLAM-1.
 - LEVELS 2 THRU 12: ALL MILLWORK COUNTER TOPS TO BE SS-1.
 - LEVELS 2 THRU 12: ALL INTERIOR DOORS AND FRAMES TO BE PAINTED PT-5.
 - LEVELS 2 THRU 12: ALL CORRIDOR & ELEVATOR LOBBY WALLS TO BE PT-1.
 - LEVELS 2 THRU 12: ALL CORRIDOR & ELEVATOR LOBBY FLOORS TO BE LRP AND RB (SEE FINISH LEGEND).
 - ELEVATOR CAB FLOORS TO BE LRP.

PLAN GENERAL NOTES

- VERIFY ALL EXISTING DIMENSION IN FIELD
- CLEAN & RE-GROUT ALL EXISTING WALL & FLOOR TILES TO REMAIN.
- TYP. MARBLE THRESHOLD AT FLOORING TRANSITIONS U.N.O.

FLOOR PLAN LEGEND

- EXISTING WALL TO REMAIN
- EXISTING CMU WALL TO REMAIN
- EXISTING CONCRETE WALL TO REMAIN
- NEW WALLS
- (X) WINDOW TAG, SEE SCHEDULE X/AXXX

INTERIM REVIEW DOCUMENTS
 THE DESIGN DOCUMENTS DEPICTED THEREIN ARE INCOMPLETE AND MAY NOT BE USED FOR REGULATORY APPROVAL, PERMIT, OR CONSTRUCTION.

Revisions

#	DESCRIPTION	DATE

Key Plan

THE LOYOLA COLLABORATIVE
 KELL MUÑOZ + MATHES BRIERRE

1017 North Main Suite 300
 San Antonio, Texas 78212
 Tel. (210) 348-1163
 Fax. (210) 525-1038
 munoz@kellmunoz.com

201 St. Charles Avenue, Forty First Floor
 New Orleans, Louisiana 70178-4100
 Tel. (504) 586-8303
 Fax. (504) 582-1305
 architecture@mathesbrierre.com

Project Title

BUDDIG HALL

Loyola University
 New Orleans

Designed by	Checked by
---	---
Drawn by	Date
---	SEPT. 26, 2011
Sheet Title	
2 THRU 11 FINISH FLOOR PLANS	
Project No.	Sheet No.
10664	A-802