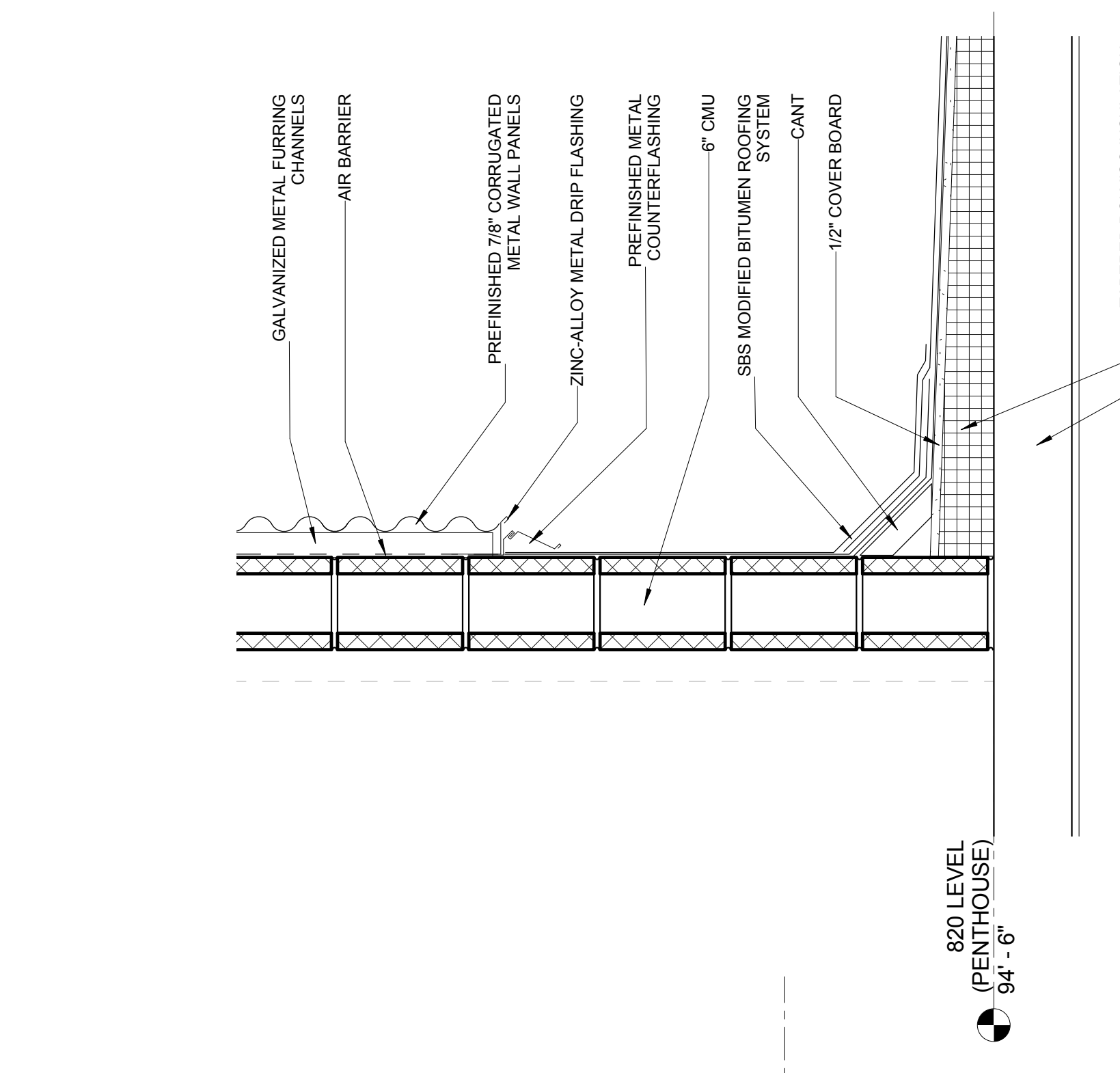
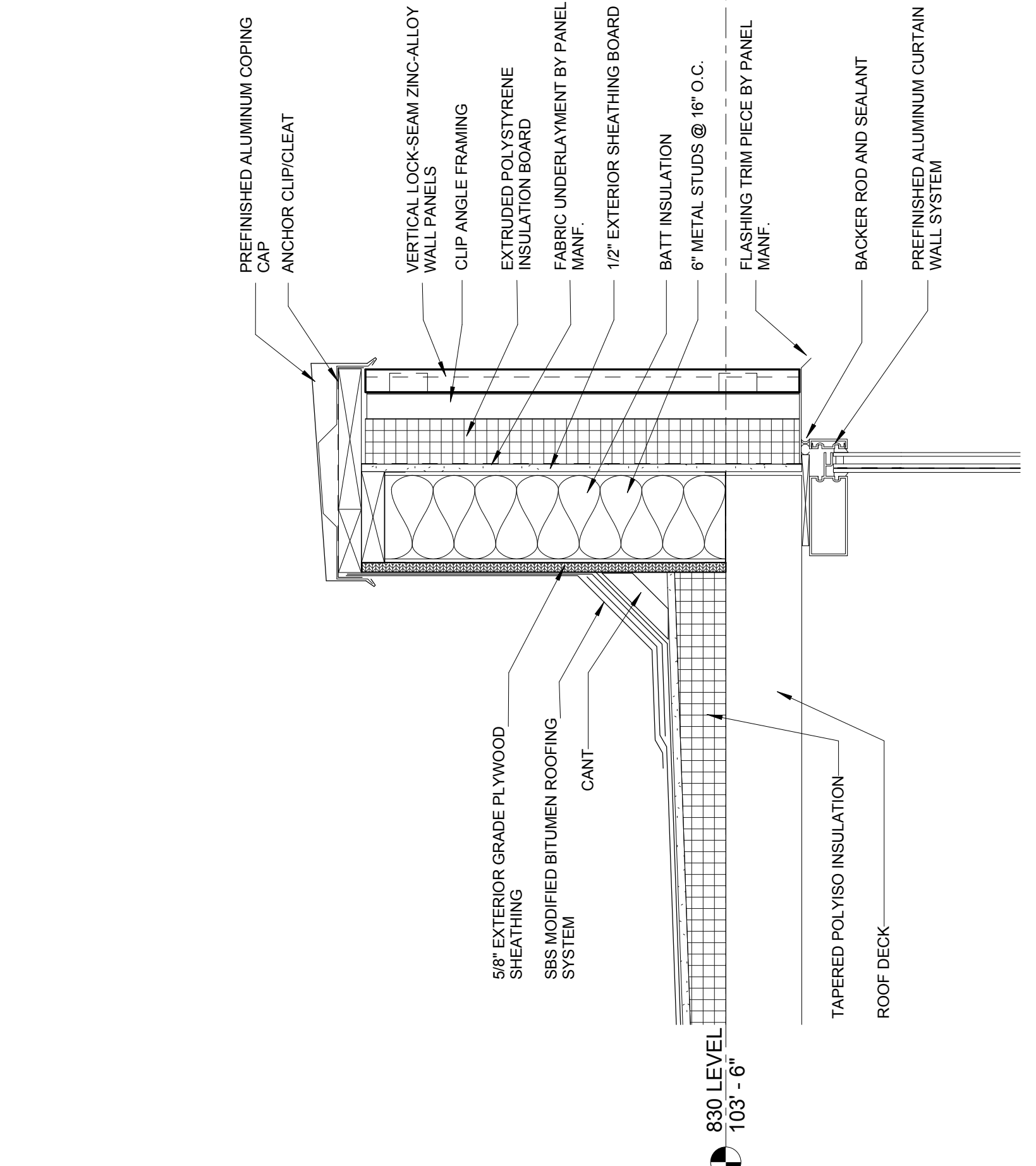


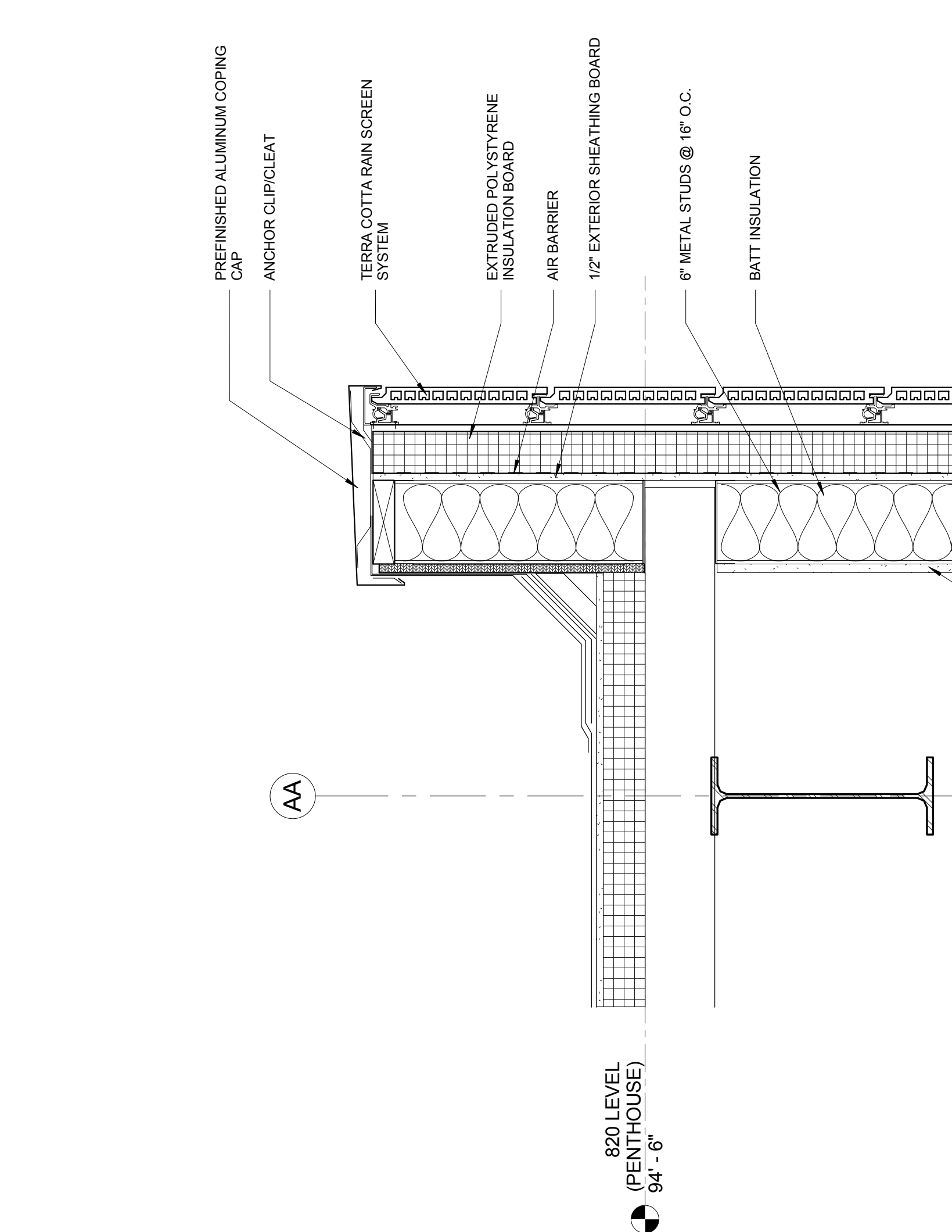
4 STEP FLASHING DETAIL AT GREENHOUSE/EQUIPMENT SCREEN WALL
A5-51 1 1/2" = 1'-0"



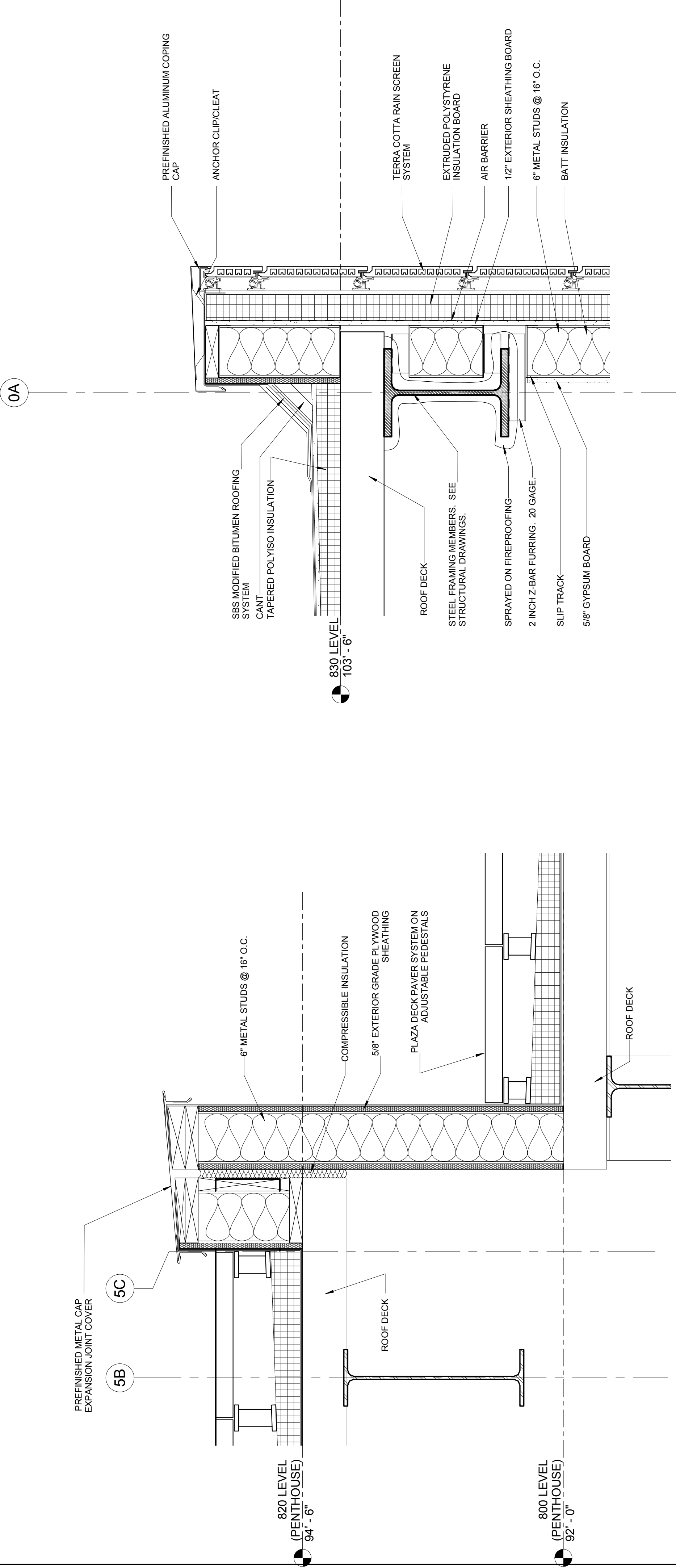
3 WALL TO ROOF DETAIL AT ROOF #6
A5-51 1 1/2" = 1'-0"



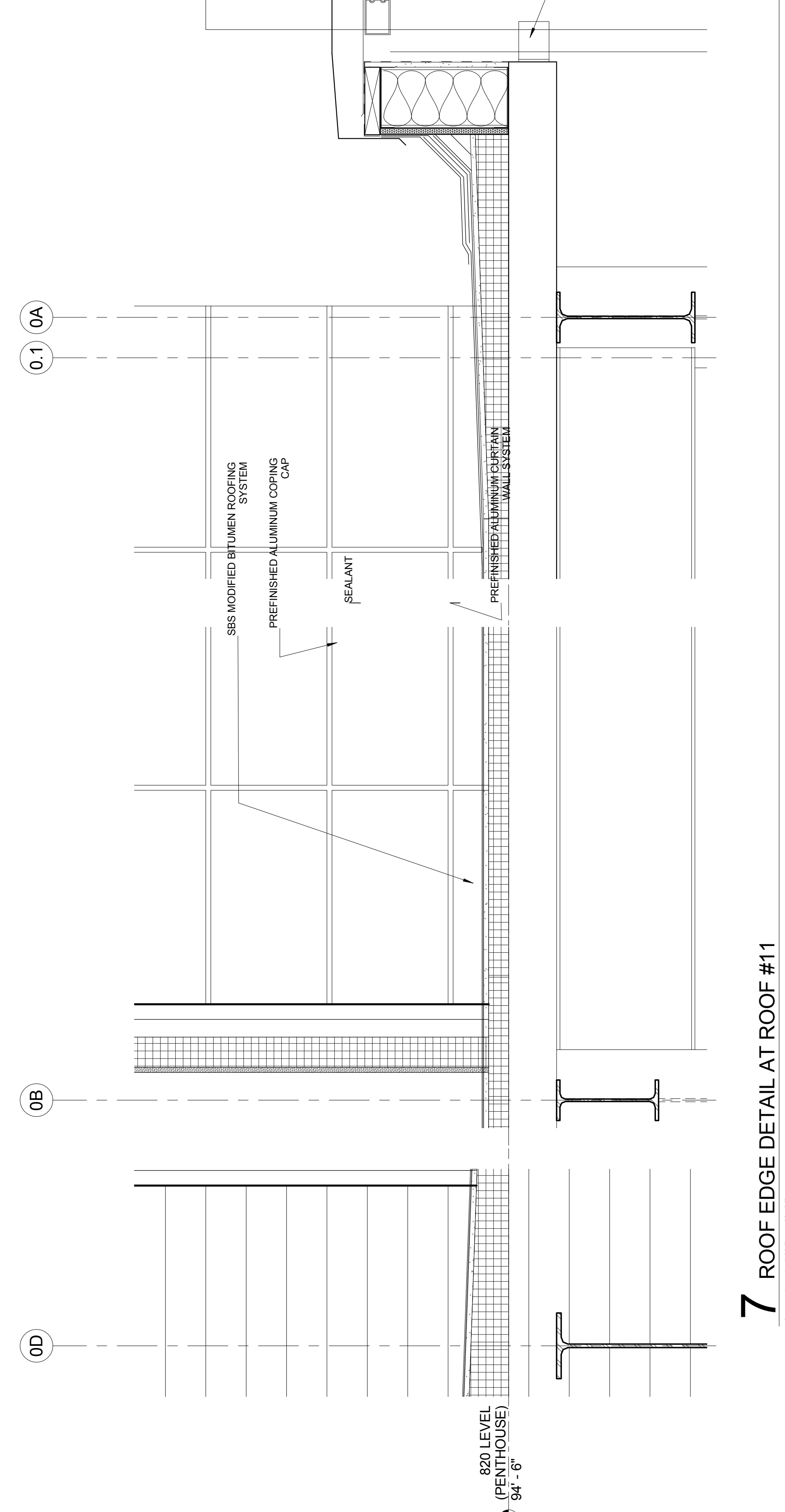
2 ROOF EDGE AT ROOF #10
A5-51 1 1/2" = 1'-0"



1 ROOF PARAPET DETAIL AT ROOF #6
A5-51 1 1/2" = 1'-0"

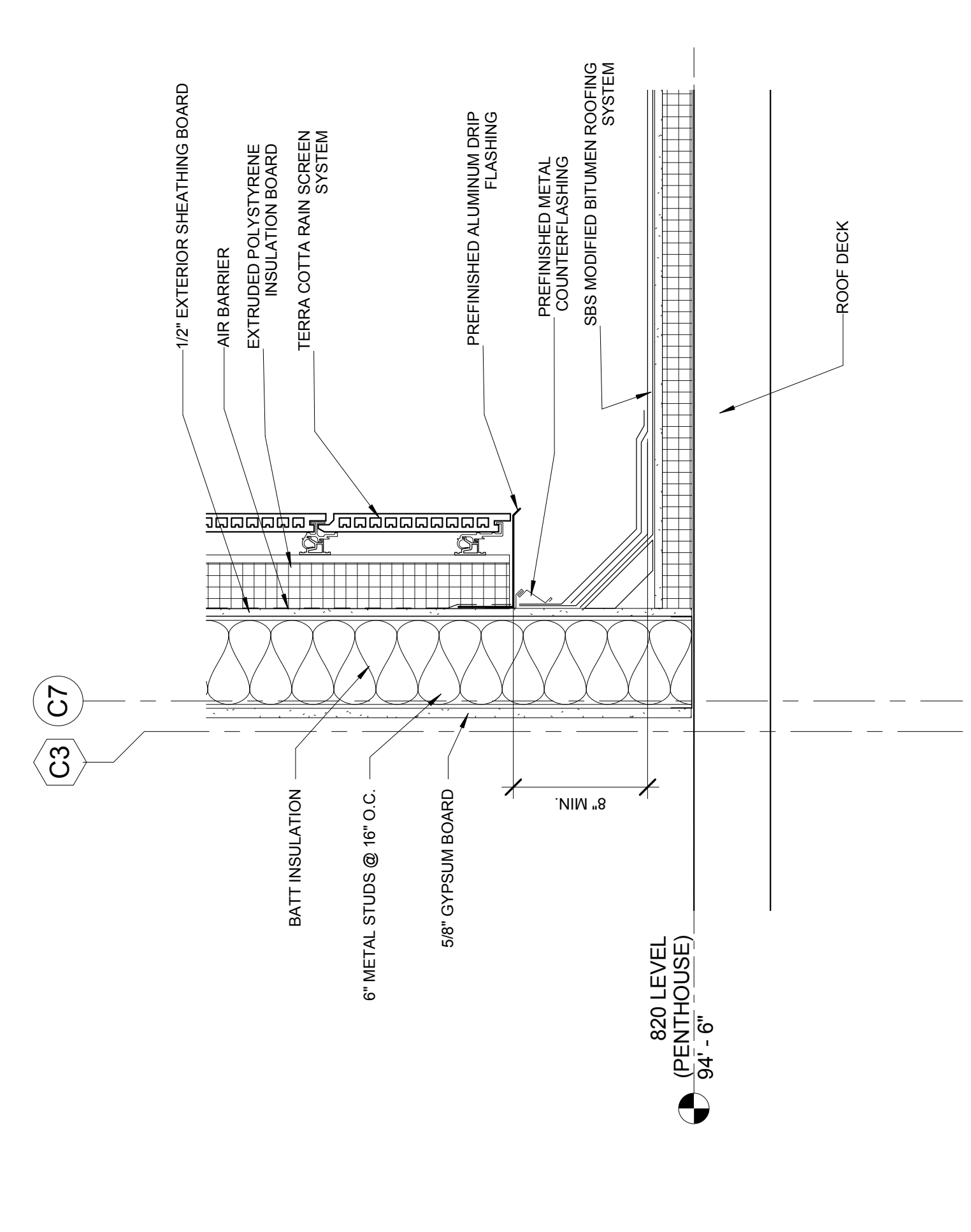


5 EXPANSION JOINT AT ROOF #6
A5-51 1 1/2" = 1'-0"

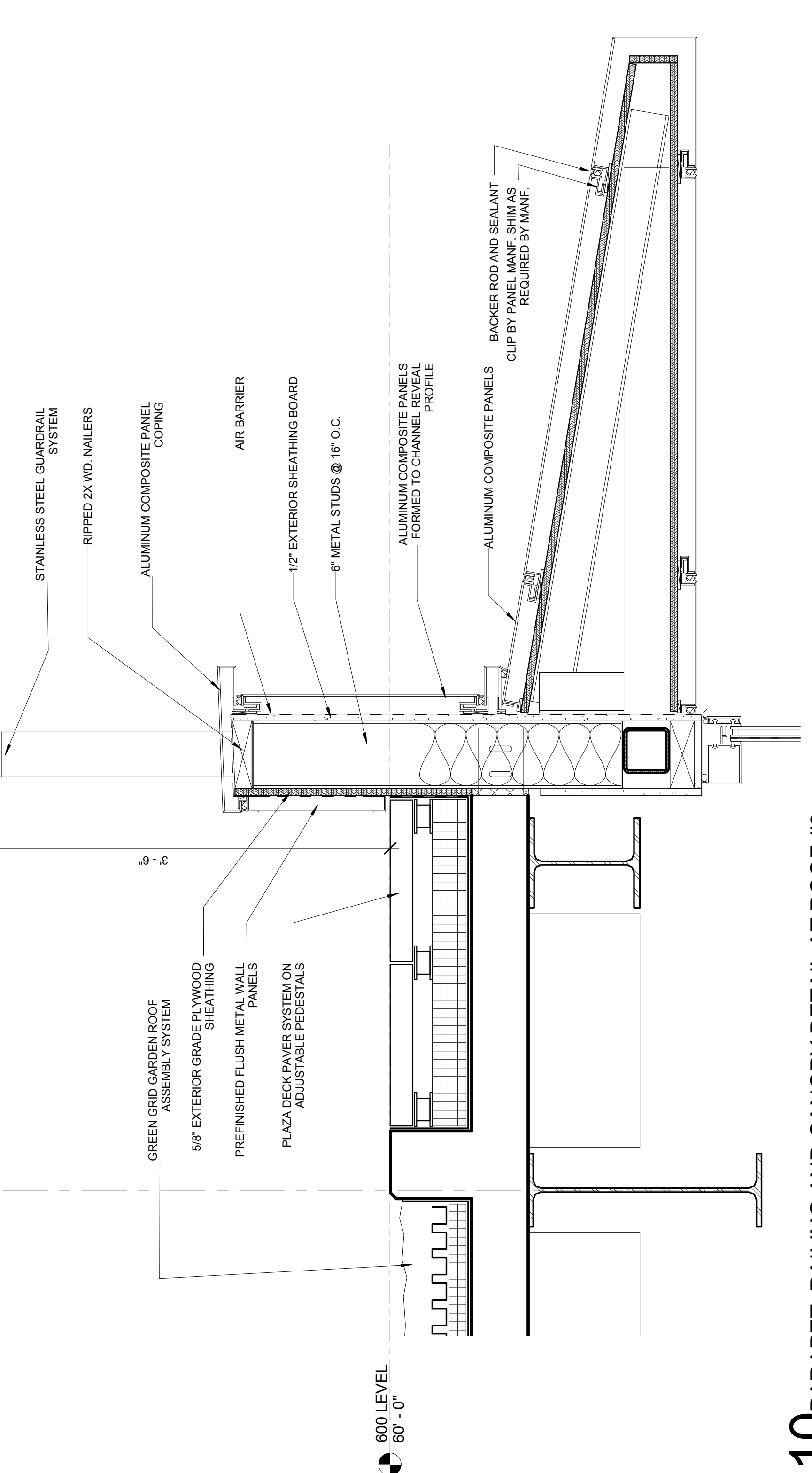


7 ROOF EDGE DETAIL AT ROOF #1
A5-51 1 1/2" = 1'-0"

6 ROOF EDGE PARAPET AT ROOF #10
A5-51 1 1/2" = 1'-0"



8 BASE FLASHING DETAIL AT ROOF #11
A5-51 1 1/2" = 1'-0"



10 PARAPET, RAILING AND CANOPY DETAIL AT ROOF #3
A5-51 1 1/2" = 1'-0"

| SD PRICING SET | | NO. DATE | | ISSUE | |
|----------------|------------|-------------------|--|-------|--|
| 1 | 12.23.10 | 100% SD SET | | | |
| 2 | 01.18.11 | 100% SD SET | | | |
| 3 | 05.18.2011 | 100% LNO Meeting | | | |
| 4 | 09.15.2011 | 100% DD / PRICING | | | |

| No. | Date | Issue |
|-----|------|-------|
| | | |
| | | |
| | | |

| | | | |
|------------------|----------|--------------|------------------------|
| Project Number | 15248.00 | Project Name | MONROE HALL RENOVATION |
| Drawn | ATS | Sheet Name | A5-51 |
| Checked | NDF | Drawing No. | A5-51 |
| Proj. Arch./Eng. | Approver | | |

| | | |
|--------------------|-------------------------|--------------------|
| HOLLY & SMITH LLC | 1000 S. Michigan Avenue | Chicago, IL 60605 |
| 312.337.1772 (ext) | 312.337.1769 (fax) | www.hollysmith.com |

| | | |
|--------------------|-------------------------|--------------------|
| HOLLY & SMITH LLC | 1000 S. Michigan Avenue | Chicago, IL 60605 |
| 312.337.1772 (ext) | 312.337.1769 (fax) | www.hollysmith.com |