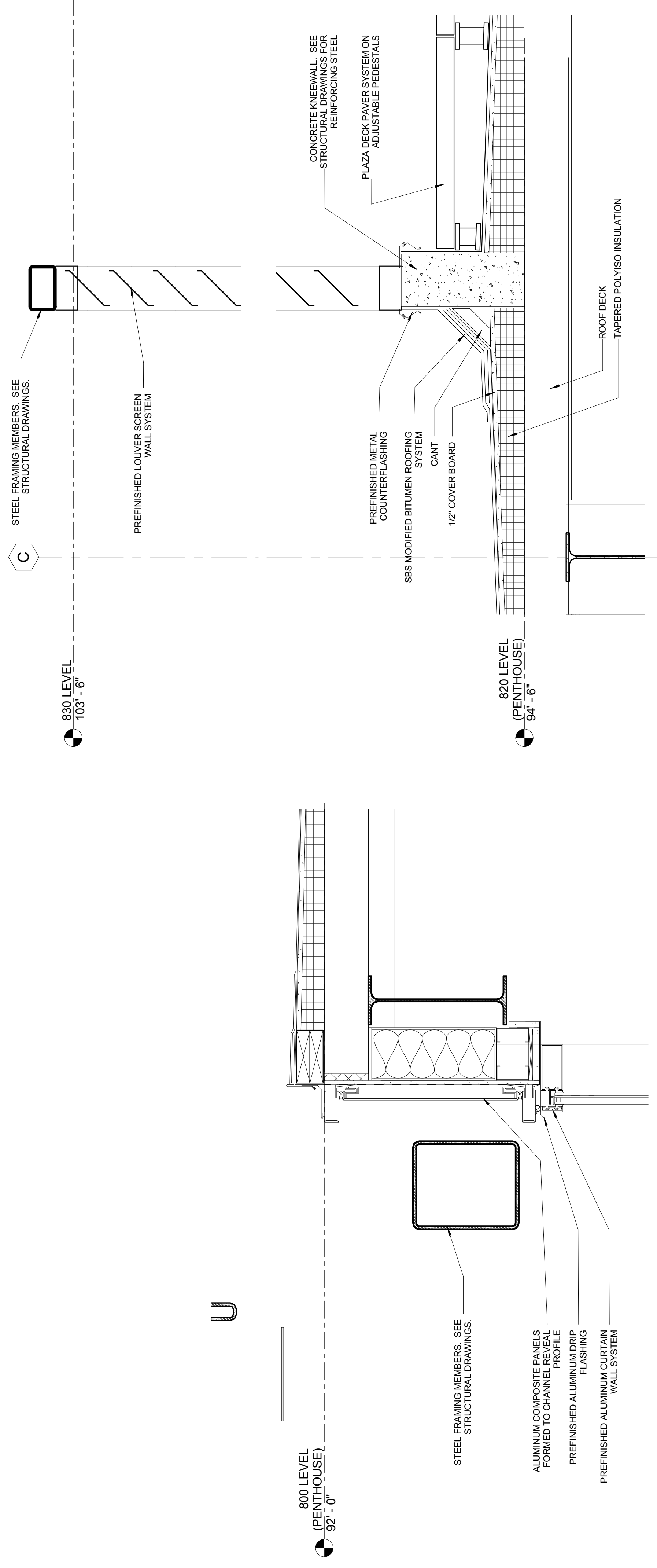
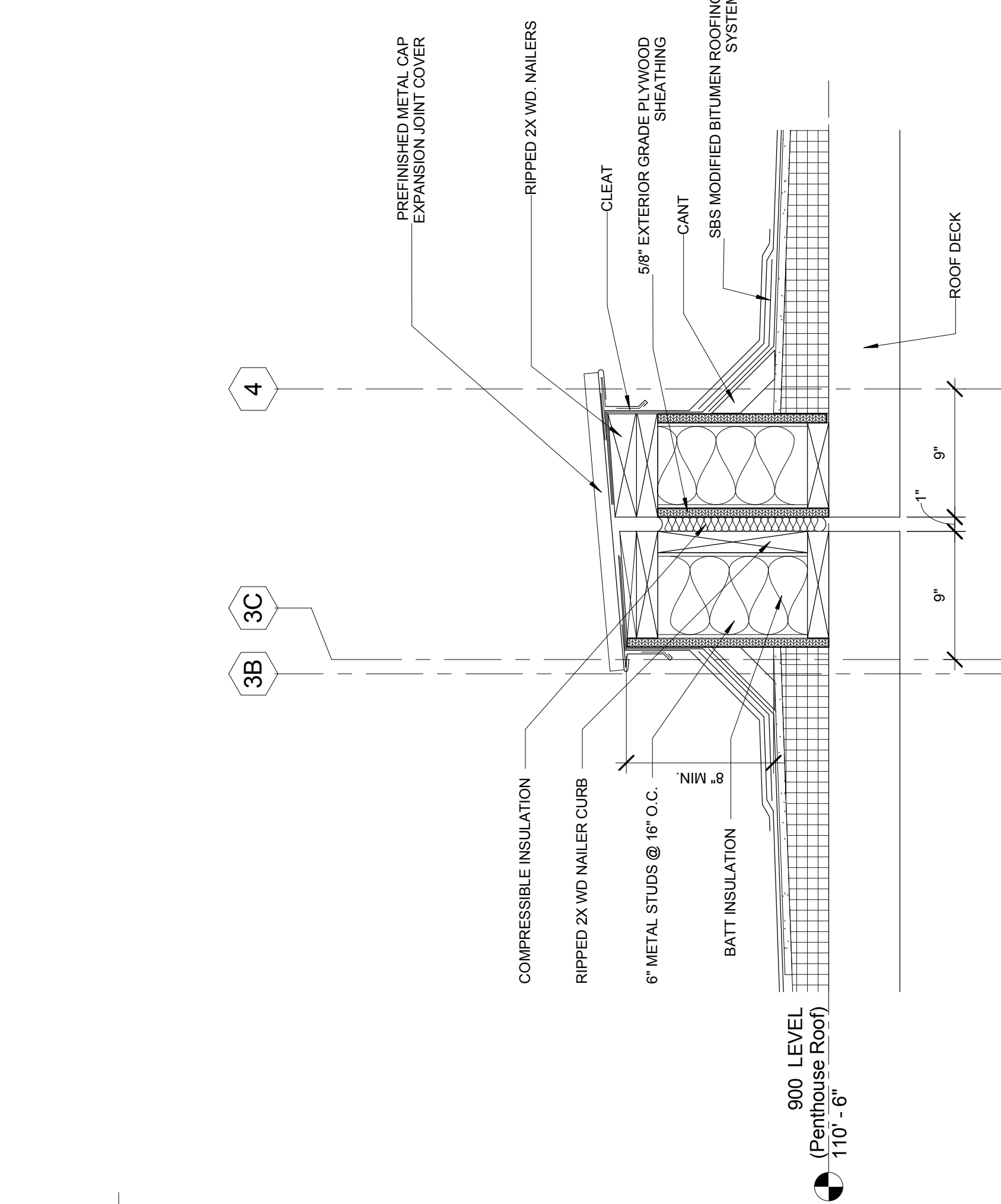


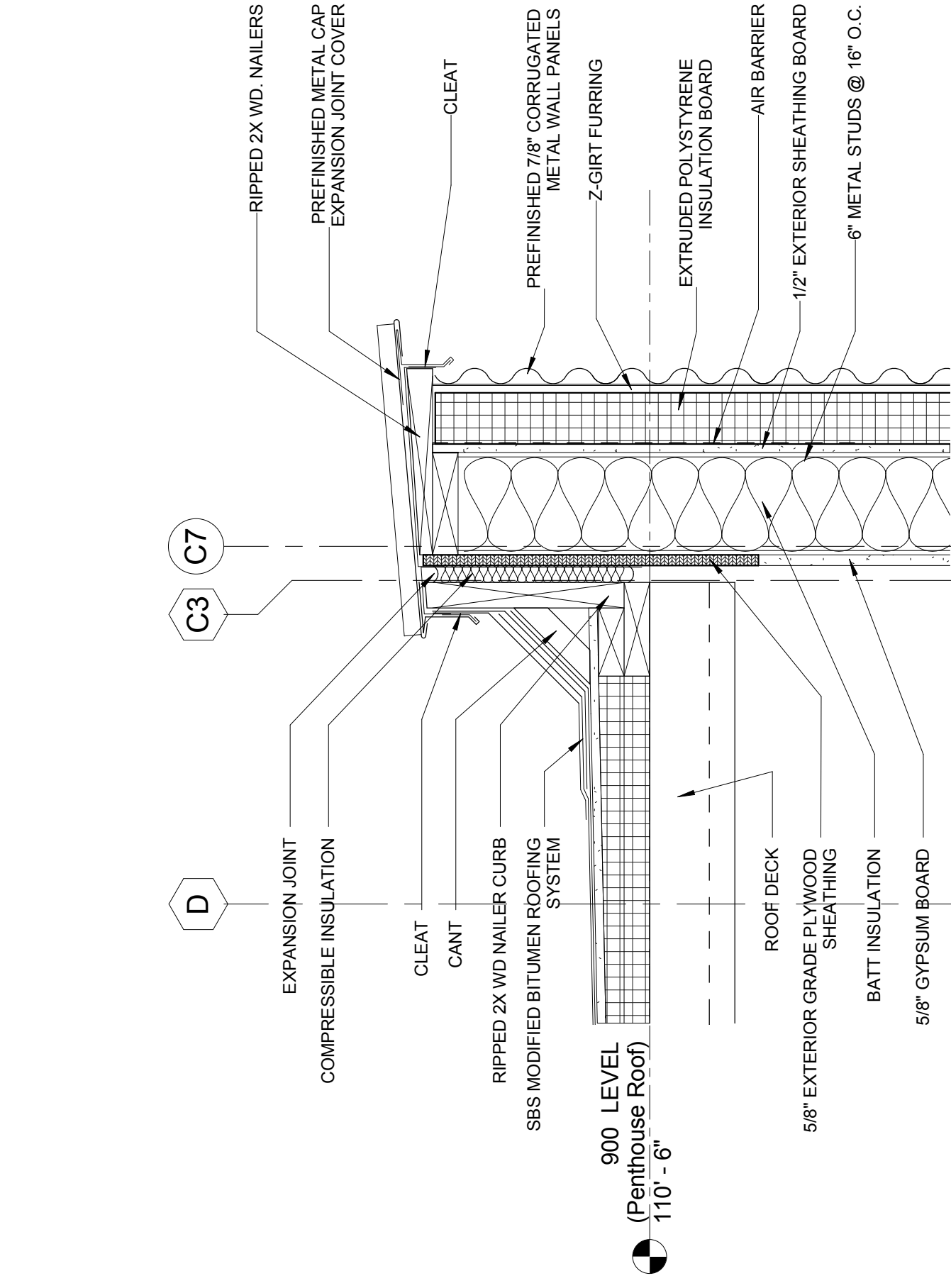
**1 ROOF PARAPET DETAIL AT ROOF #2**  
A5-52 1 1/2" = 1'-0"



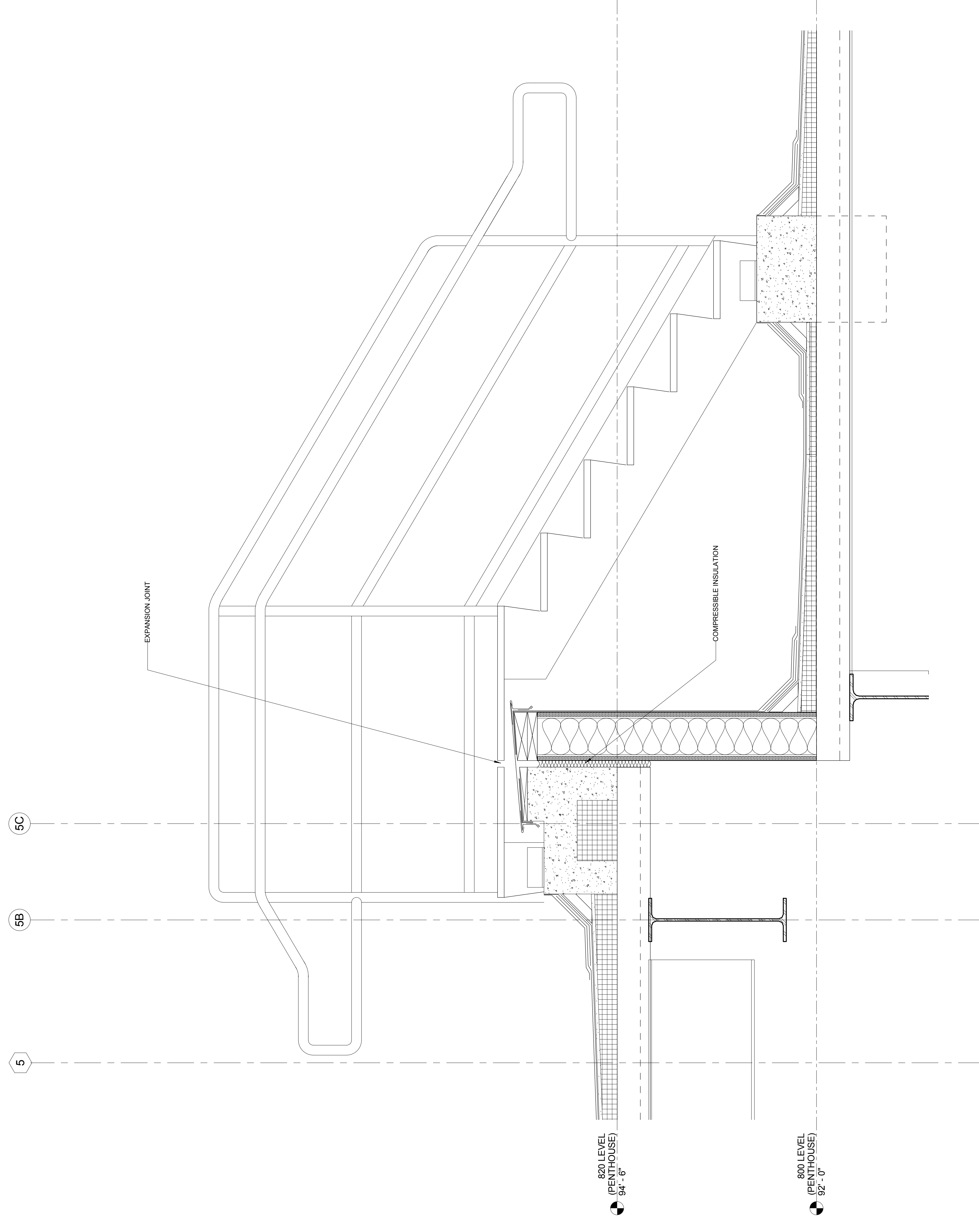
**2 ROOF EDGE AT TRELLIS DETAIL - ROOF #2**  
A5-52 1 1/2" = 1'-0"



**4 EXPANSION JOINT DETAIL AT ROOF #1**  
A5-52 1 1/2" = 1'-0"



**5 EXPANSION JOINT AT ROOF #1**  
A5-52 1 1/2" = 1'-0"



**6 STAIR AT ROOF #6**  
A5-52 1 1/2" = 1'-0"

**3 MECHANICAL EQUIPMENT SCREEN DETAIL AT ROOF #9**  
A5-52 1 1/2" = 1'-0"

No.	Date	Issue
1	12.23.10	SD PRICING SET
2	01.18.11	100% SD SET
3	05.18.2011	100% MEETING
4	09.15.2011	100% DD / PRICING

No.	Date	Issue

Hollady & Smith, LLC expressly disclaims any liability for errors or omissions in this drawing, printing, drawings and notes. Any reproduction must be in writing. This drawing is the property of Hollady & Smith, LLC and is not to be used for any other project without the written consent of Hollady & Smith, LLC. The user assumes all liability for any use of this drawing. © 2011 Hollady & Smith, LLC. All rights reserved.

**HOLLABIRD & ROOT**  
545 South Dearborn Avenue  
Chicago, IL 60609  
312.337.1771 (HQ)  
312.337.1769 (FA)  
www.hollabird.com

**HOLLY & SMITH, LLC**  
1272 August Street  
New Orleans, LA 70119  
504.581.1111 (HQ)  
504.581.1112 (FA)  
www.hollysmith.com

Project Number: 15248.00  
Drawn: ATS  
Checked: NDF  
Proj. Arch./Eng: Approver

**LOYOLA UNIVERSITY NEW ORLEANS**  
**MONROE HALL RENOVATION**  
Project Name  
Sheet Name: **A5-52**  
Drawing No.

ROOF DETAILS