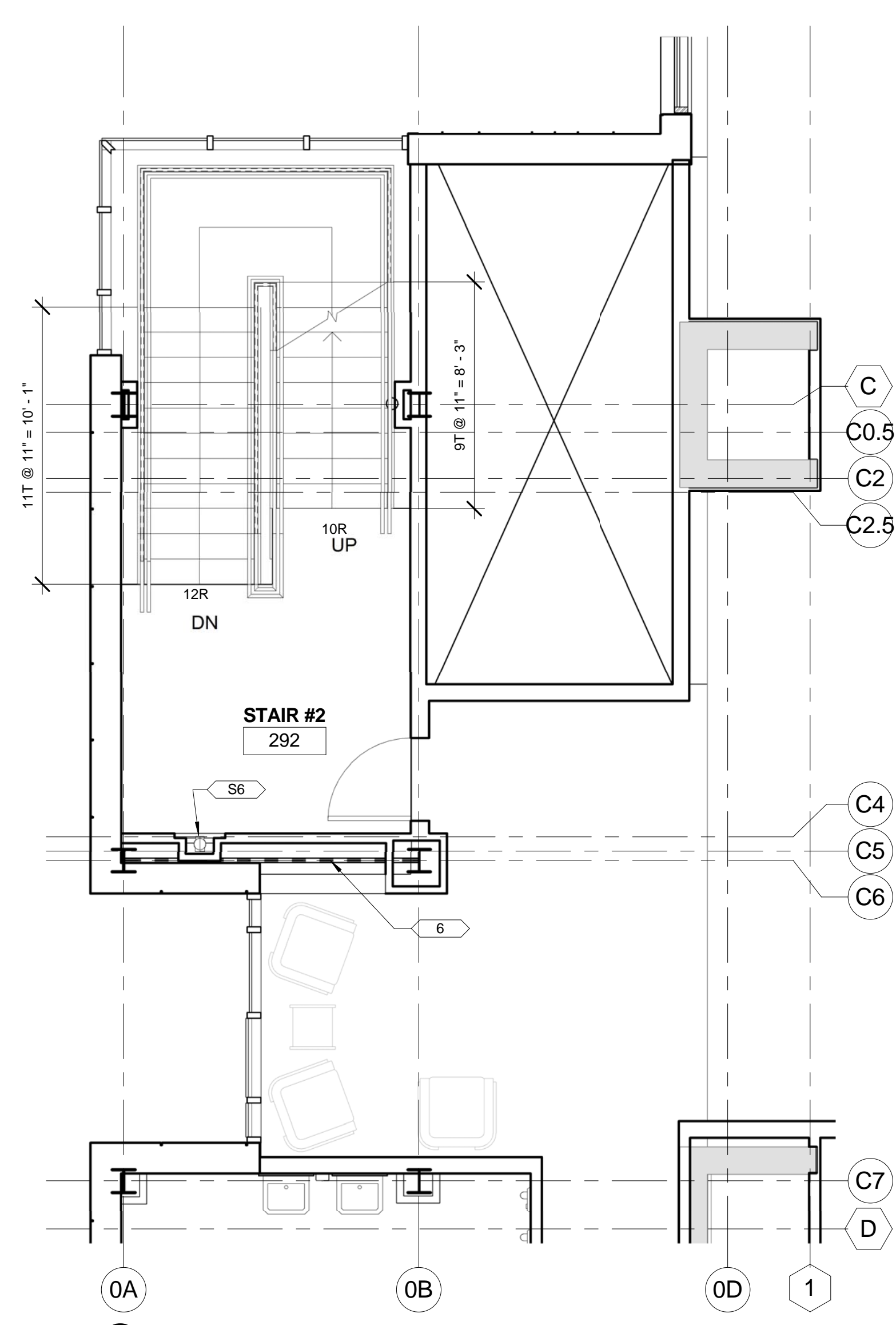
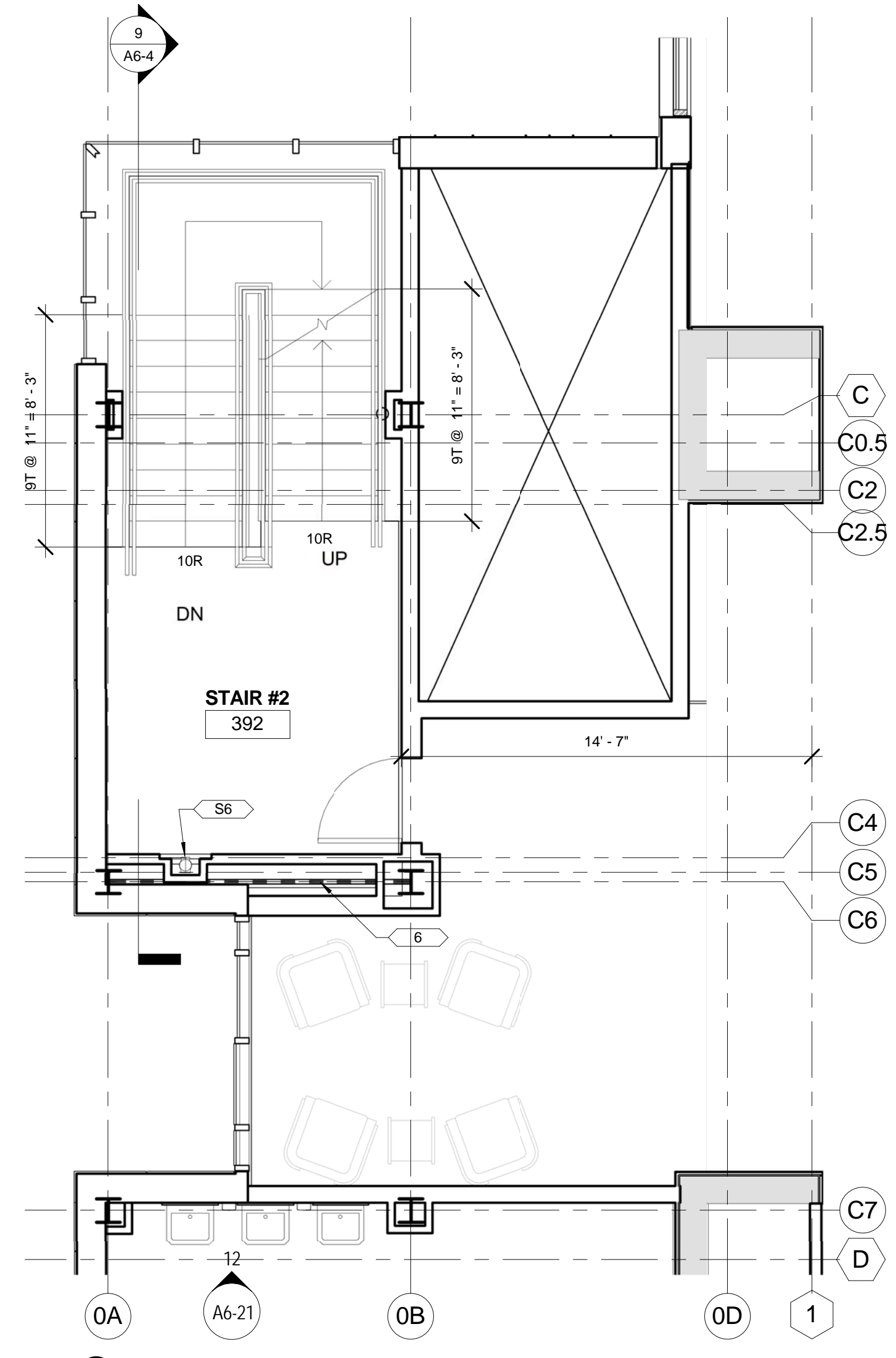


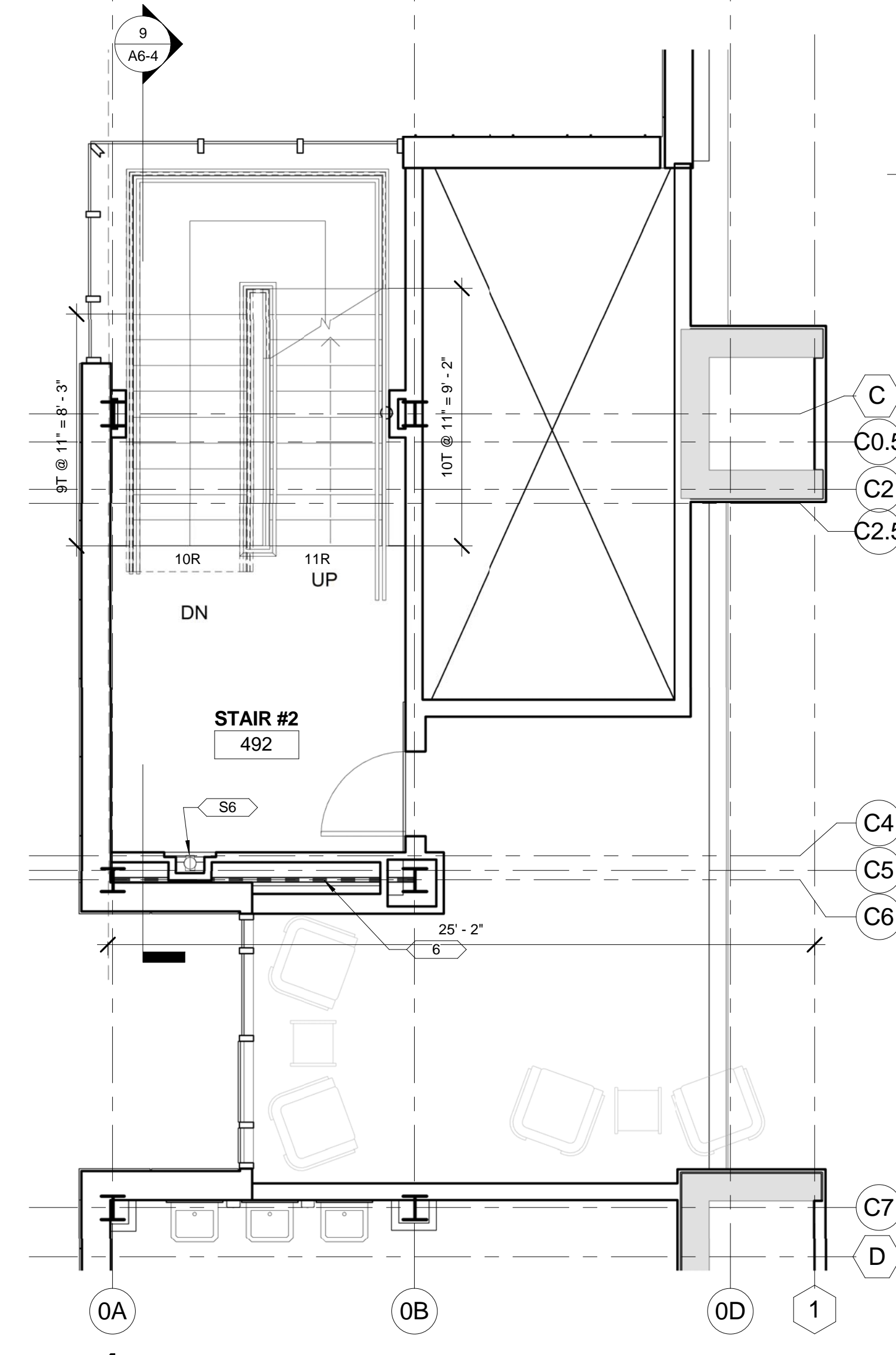
**1 STAIR #2 - 100 LEVEL PLAN**  
A6-4 1/4" = 1'-0" (REF: 1/A2-1)



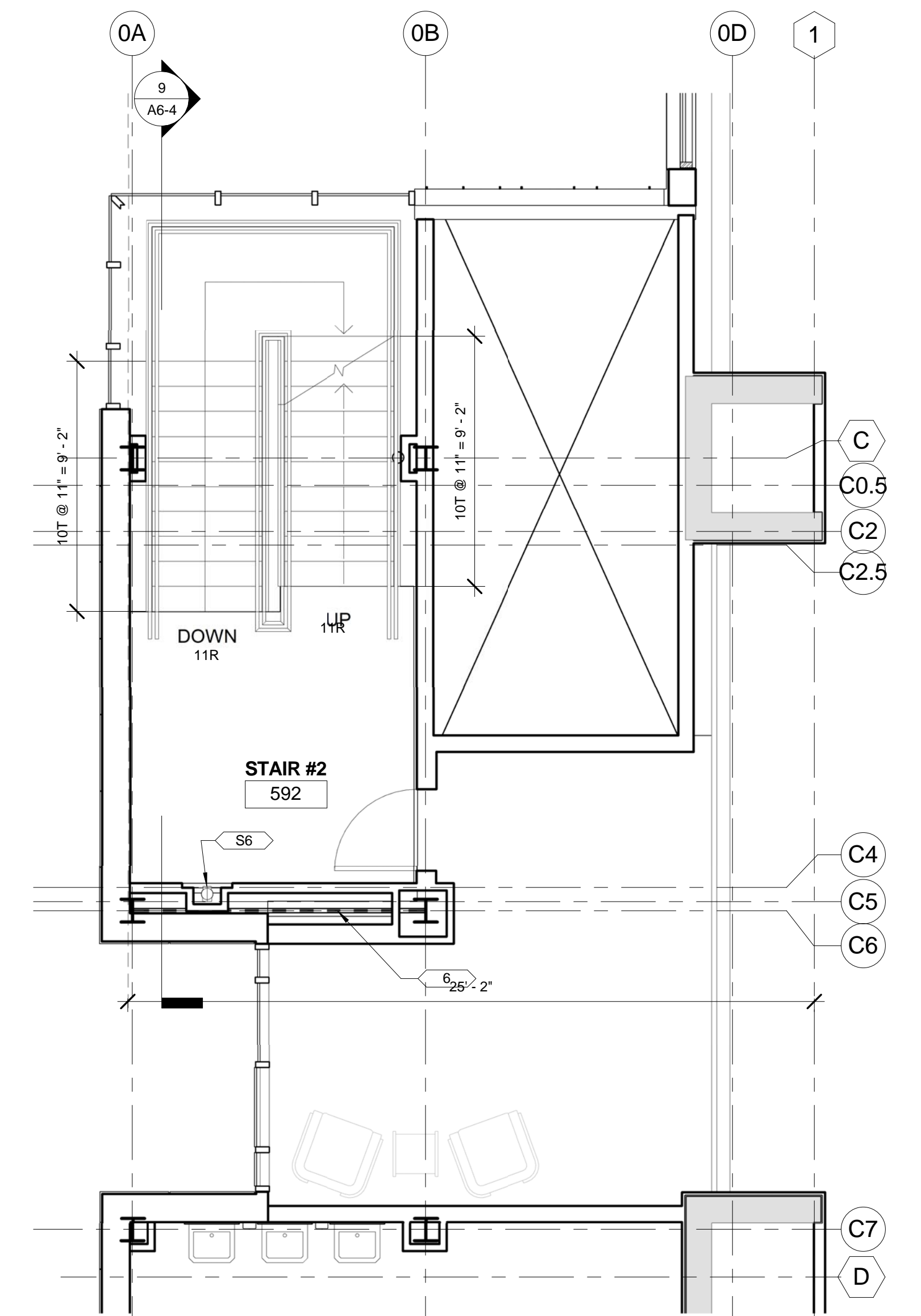
**2 STAIR #2 - 200 LEVEL PLAN**  
A6-4 1/4" = 1'-0" (REF: 1/A2-2)



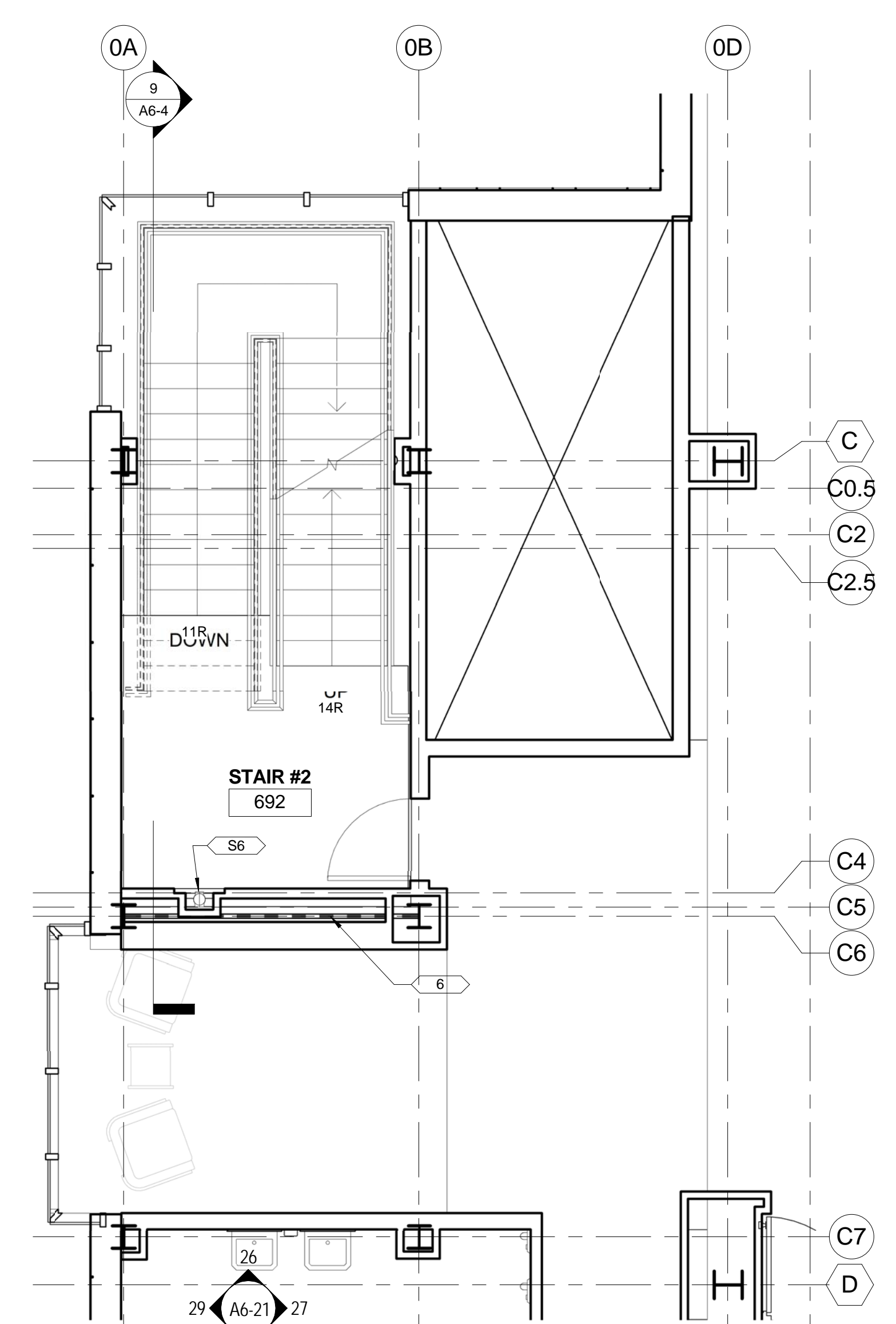
**3 STAIR #2 - 300 LEVEL PLAN**  
A6-4 1/4" = 1'-0" (REF: 1/A2-3)



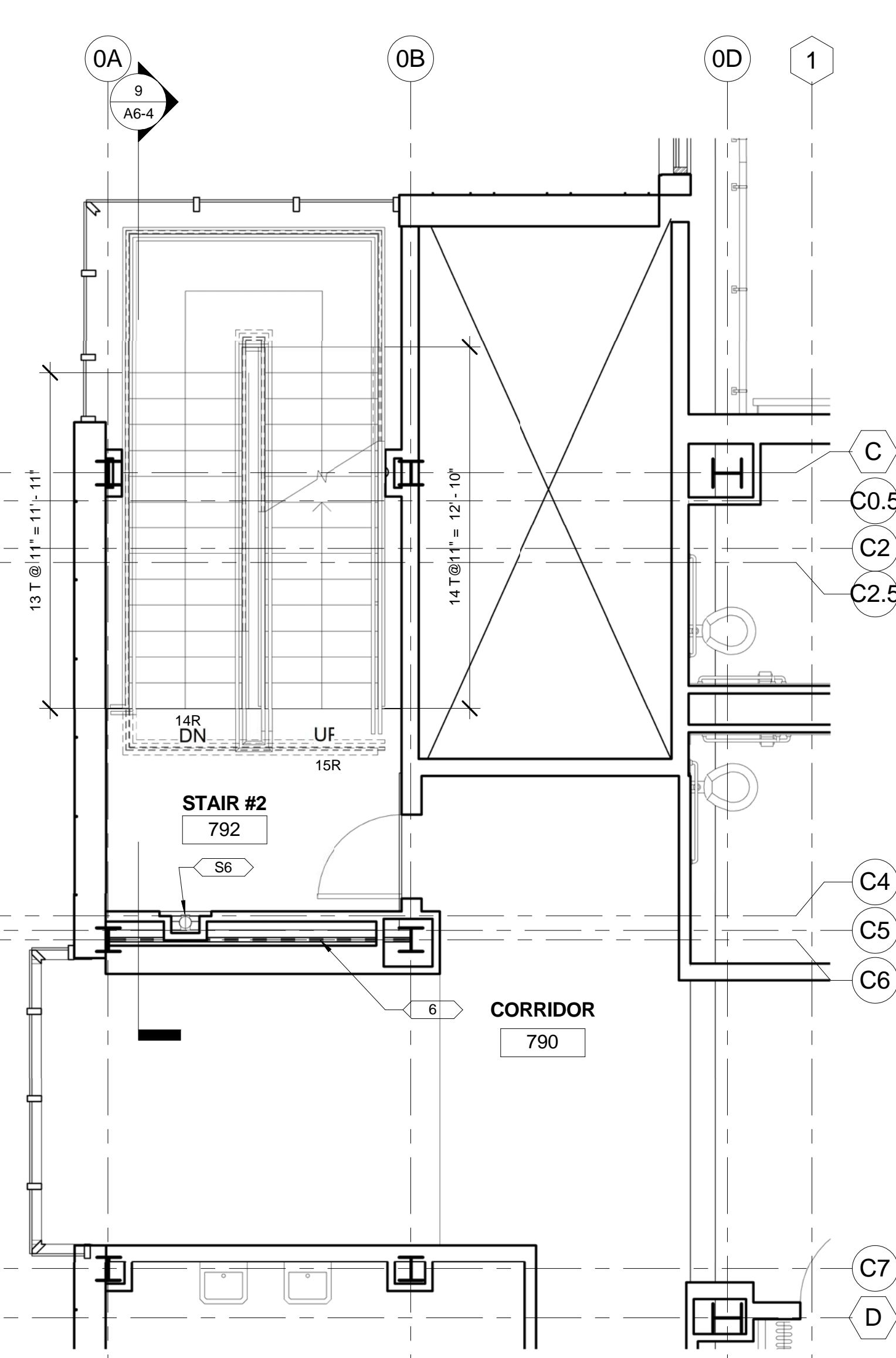
**4 STAIR #2 - 400 LEVEL PLAN**  
A6-4 1/4" = 1'-0" (REF: 1/A2-4)



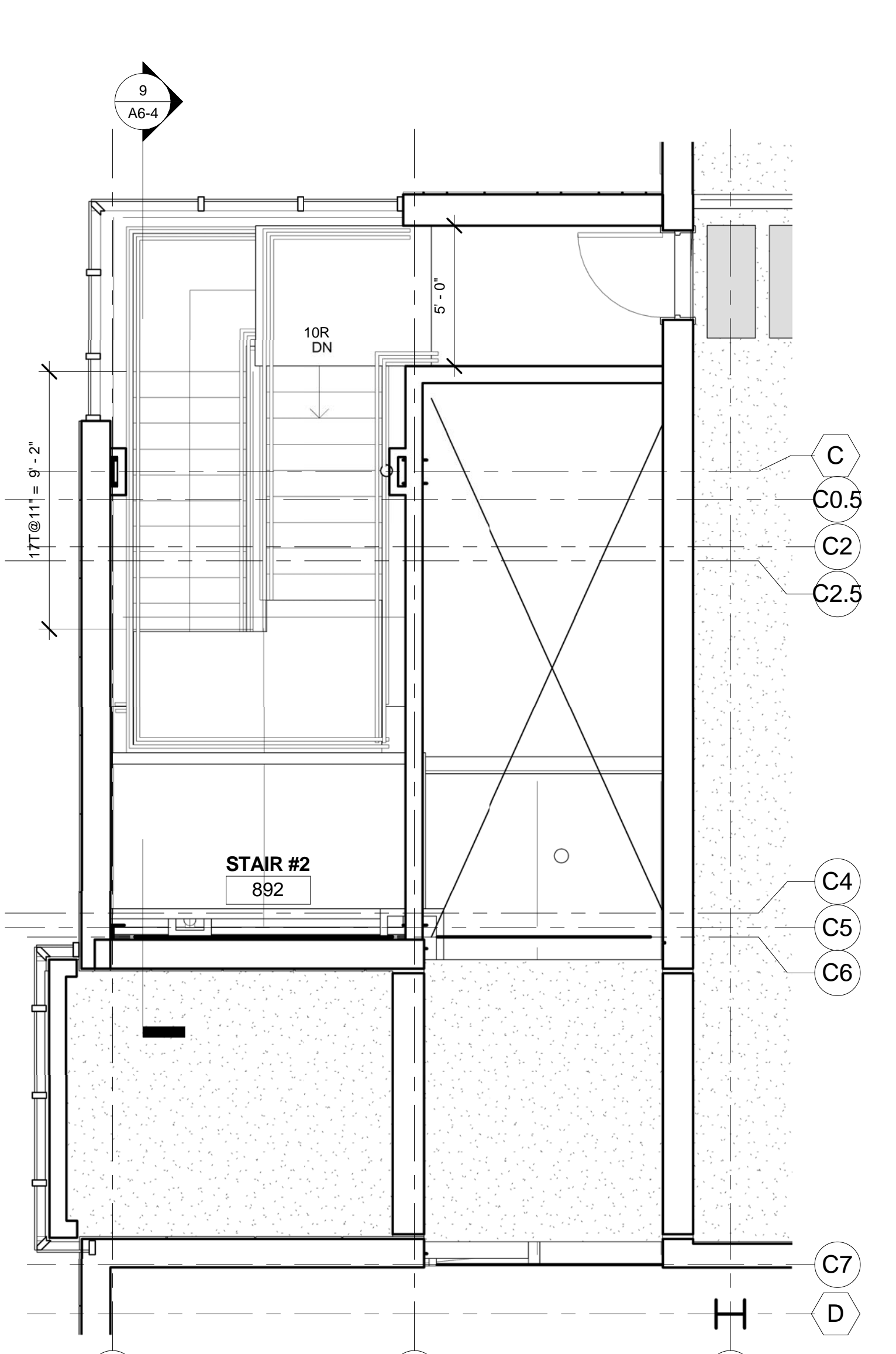
**5 STAIR #2 - 500 LEVEL PLAN**  
A6-4 1/4" = 1'-0" (REF: 1/A2-5)



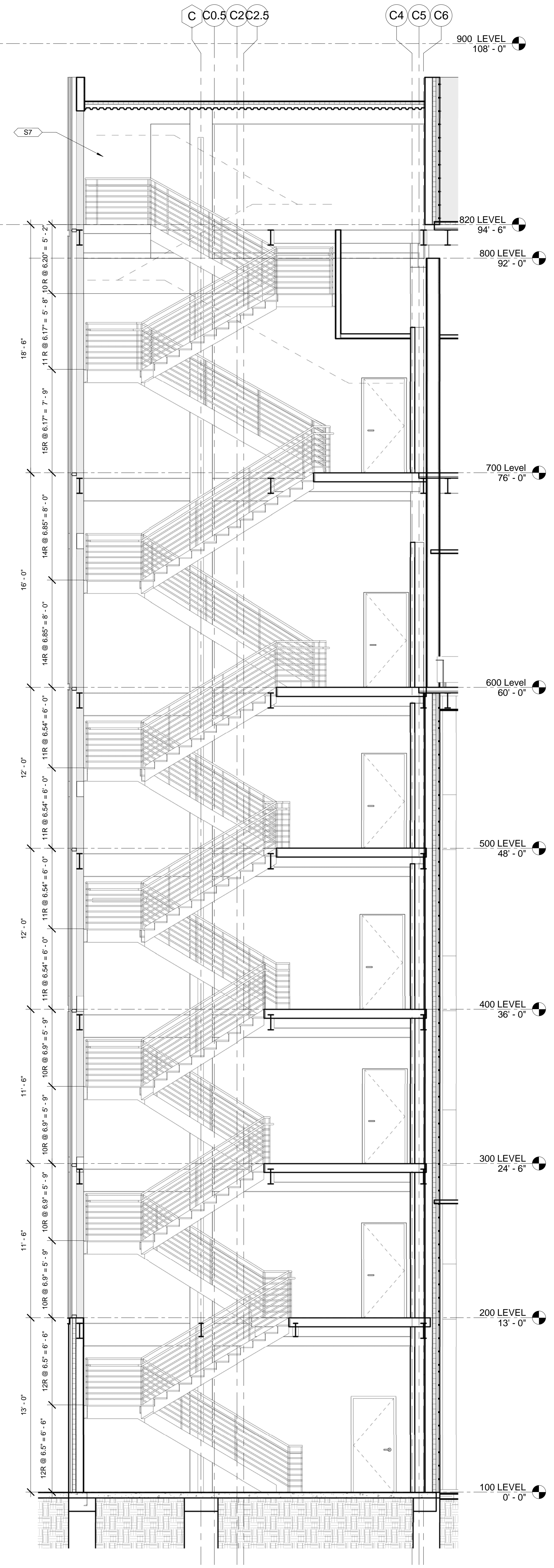
**6 STAIR #2 - 600 LEVEL PLAN**  
A6-4 1/4" = 1'-0" (REF: 1/A2-6)



**7 STAIR #2 - 700 LEVEL PLAN**  
A6-4 1/4" = 1'-0" (REF: 1/A2-7)



**8 STAIR #2 - 800 LEVEL PLAN**  
A6-4 1/4" = 1'-0" (REF: 1/A2-8)



**9 STAIR #2 - SECTION LOOKING NORTH**  
A6-4 1/4" = 1'-0" (REF: 1/A2-1)

1	12.23.2010	SD PRICING SET			
2	01.18.2011	100% SD SET			
3	09.15.2011	100% DD / PRICING SET			
No.	Date	Issue	No.	Date	Issue

Holabird & Root / Holly & Smith LLC expressly disclaims any responsibility arising from any unauthorized use of these plans, drawings and notes. The Owner and Architect assume no responsibility for use of incorrect scale. Drawings are not to be scaled.  
Not published - All rights reserved.

**HOLABIRD & ROOT** | **HOLLY & SMITH LLC**  
140 South Dearborn Avenue | 2302 Magazine Street  
Suite 1200 | New Orleans, LA 70130  
312.357.1771 (tel) | 985.345.5210 (tel)  
312.357.1909 (fax) | www.hollyandsmith.com

Project Number	15248.00
Drawn	Author
Checked	Checker
Proj. Arch./Eng.	Approver



ENLARGED PLANS - STAIR #2  
Sheet Name  
Drawing No. **A6-4**