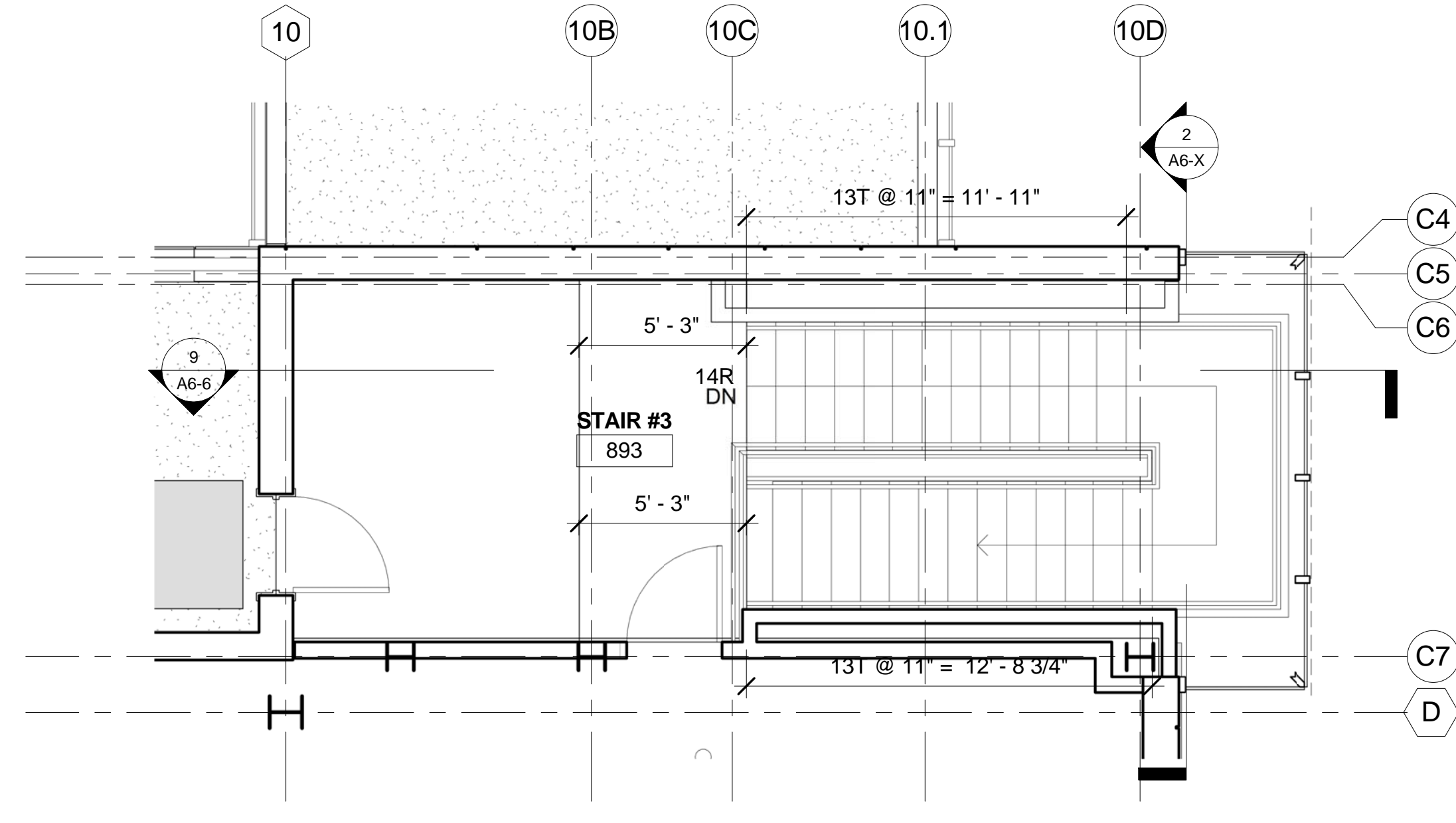
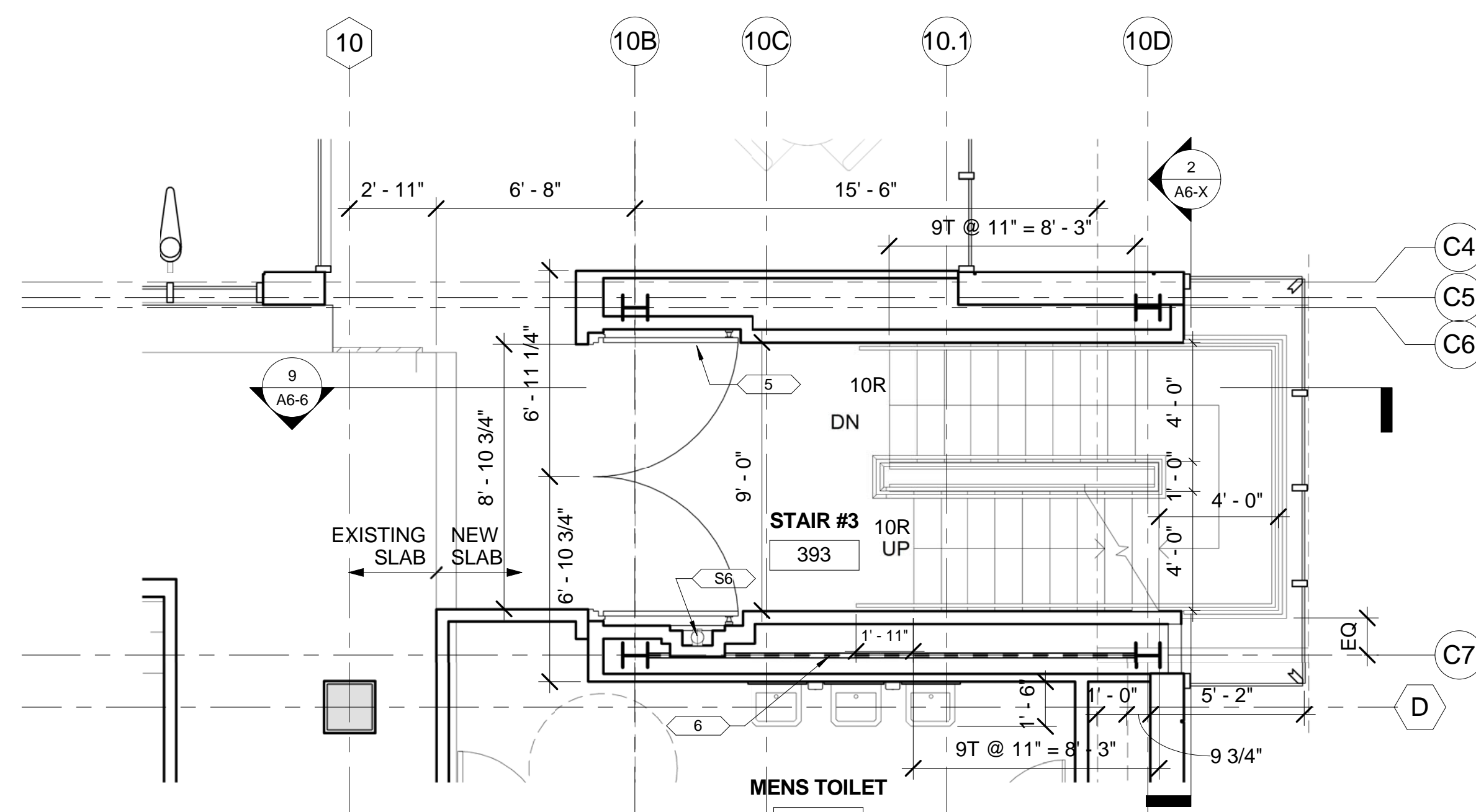


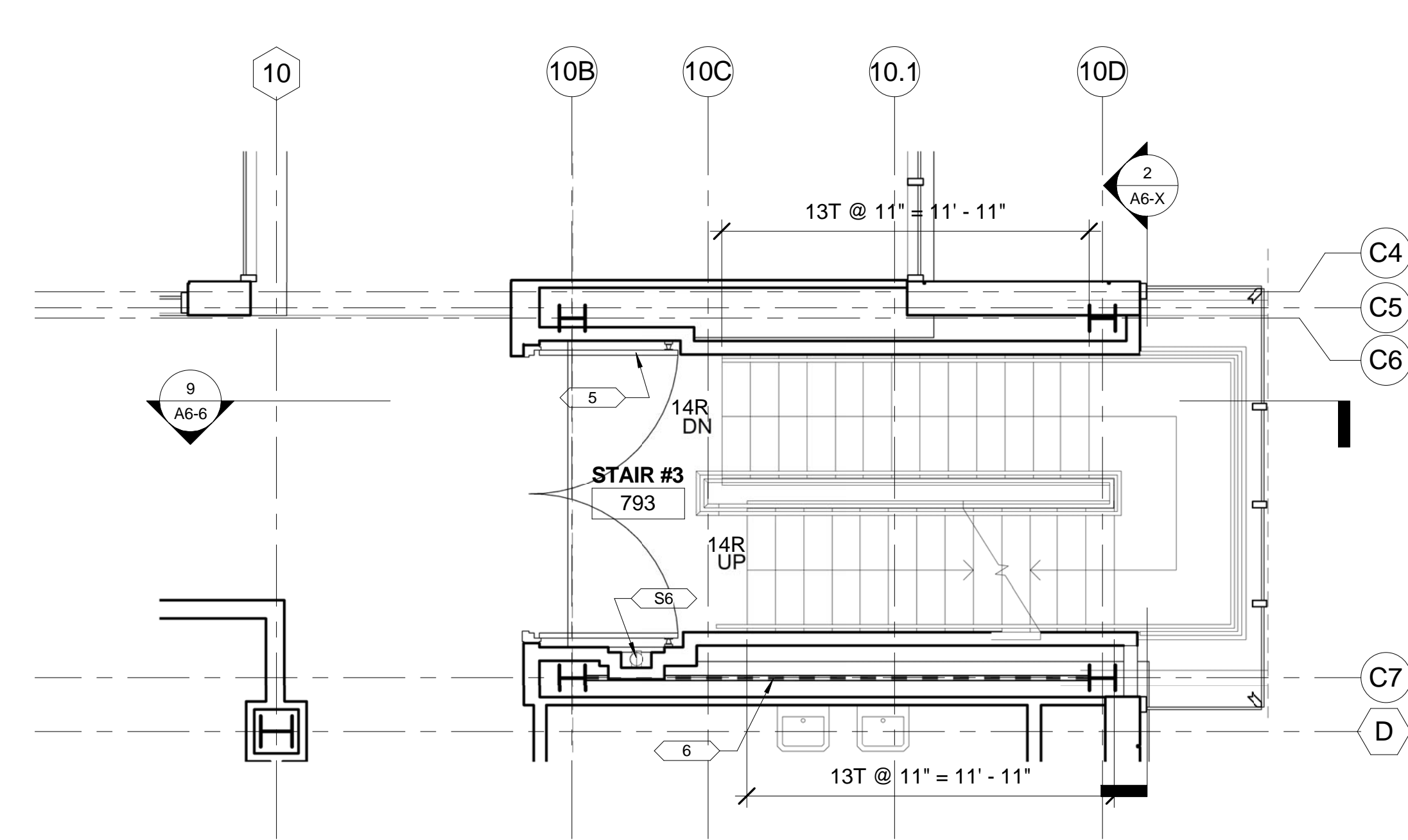
**4 STAIR #3 - 400 LEVEL PLAN**  
A6-6 1/4" = 1'-0" (REF: 1/A2-4)



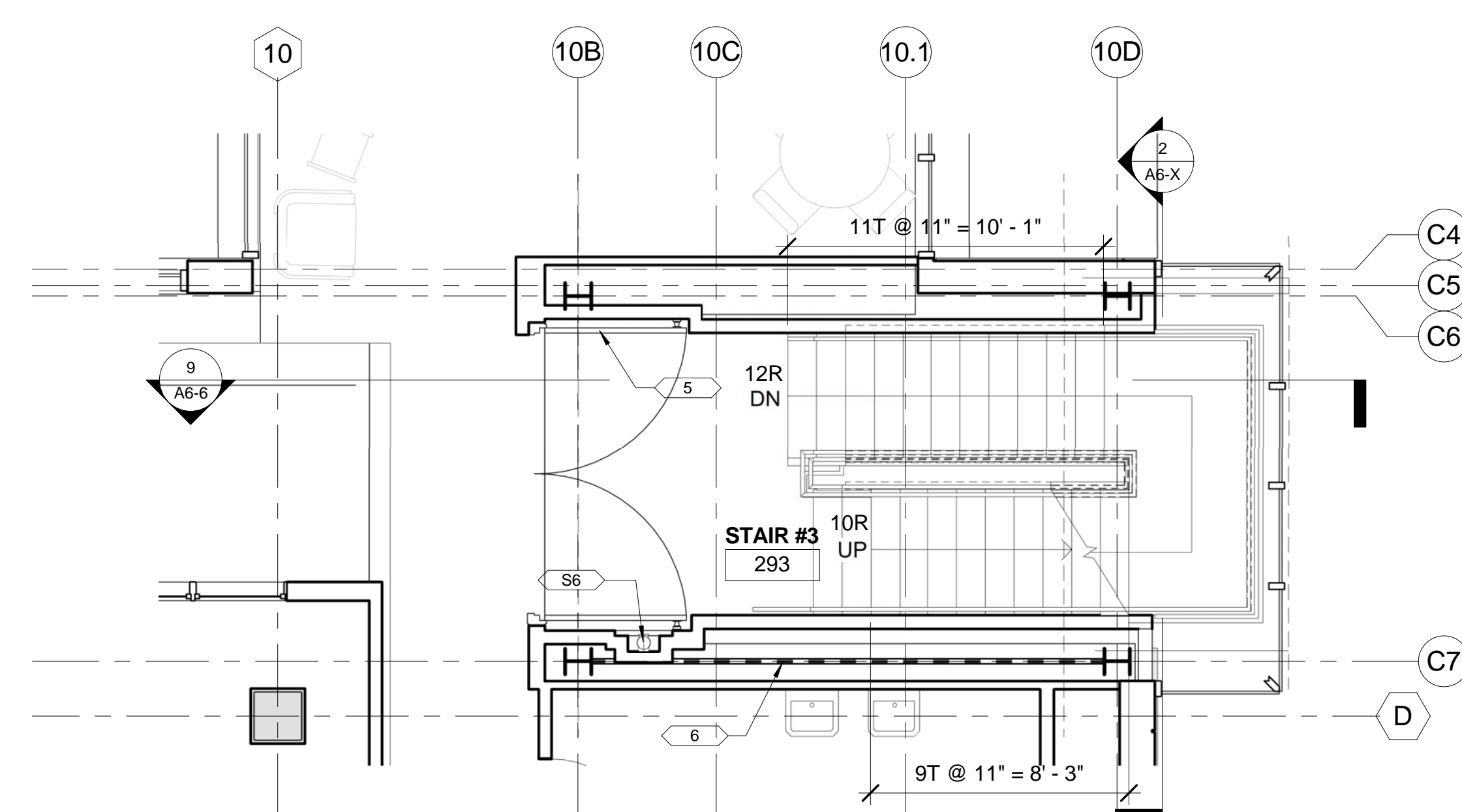
**8 STAIR #3 - 800 LEVEL PLAN**  
A6-6 1/4" = 1'-0" (REF: 1/A2-8)



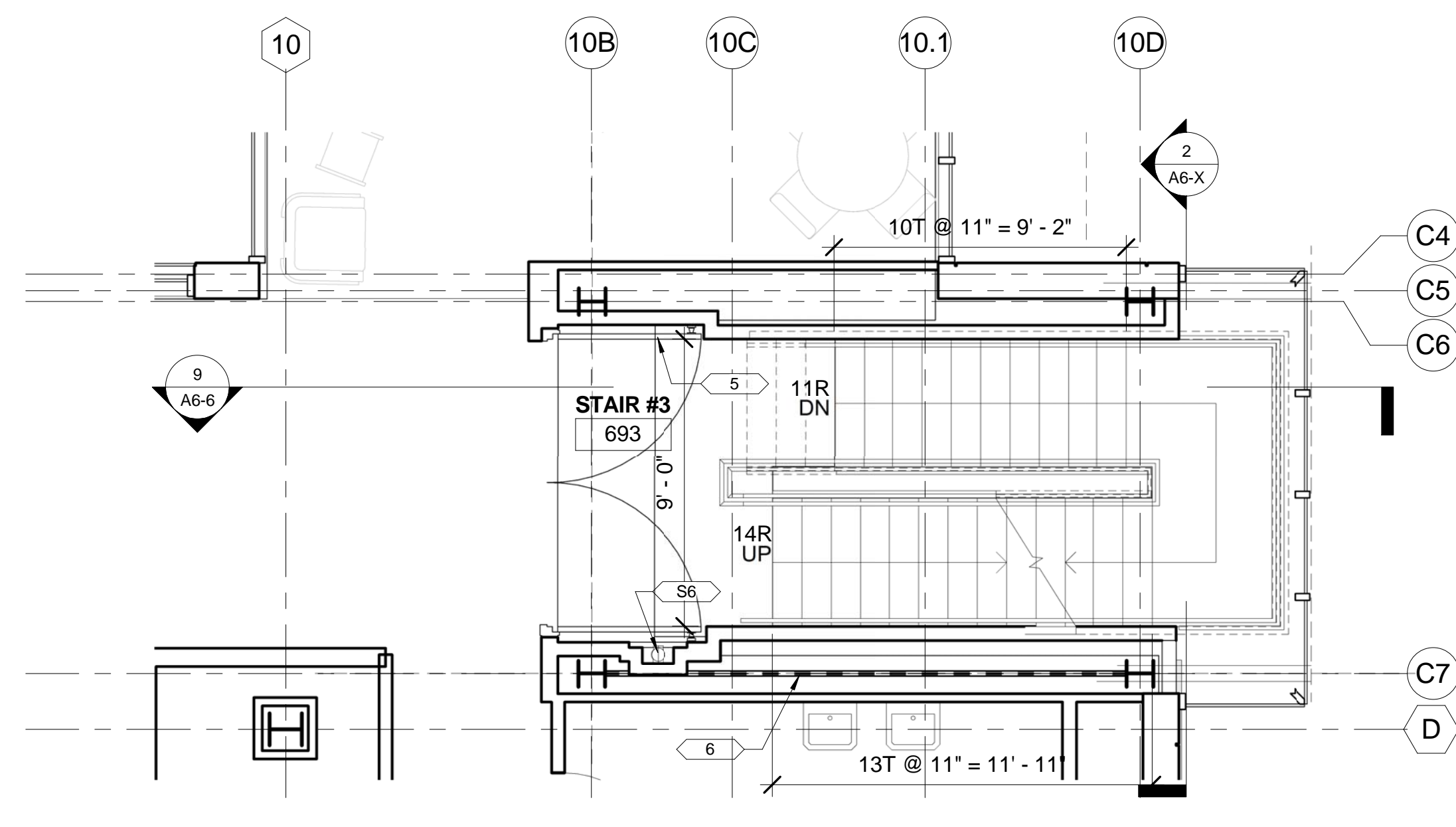
**3 STAIR #3 - 300 LEVEL PLAN**  
A6-6 1/4" = 1'-0" (REF: 1/A2-3)



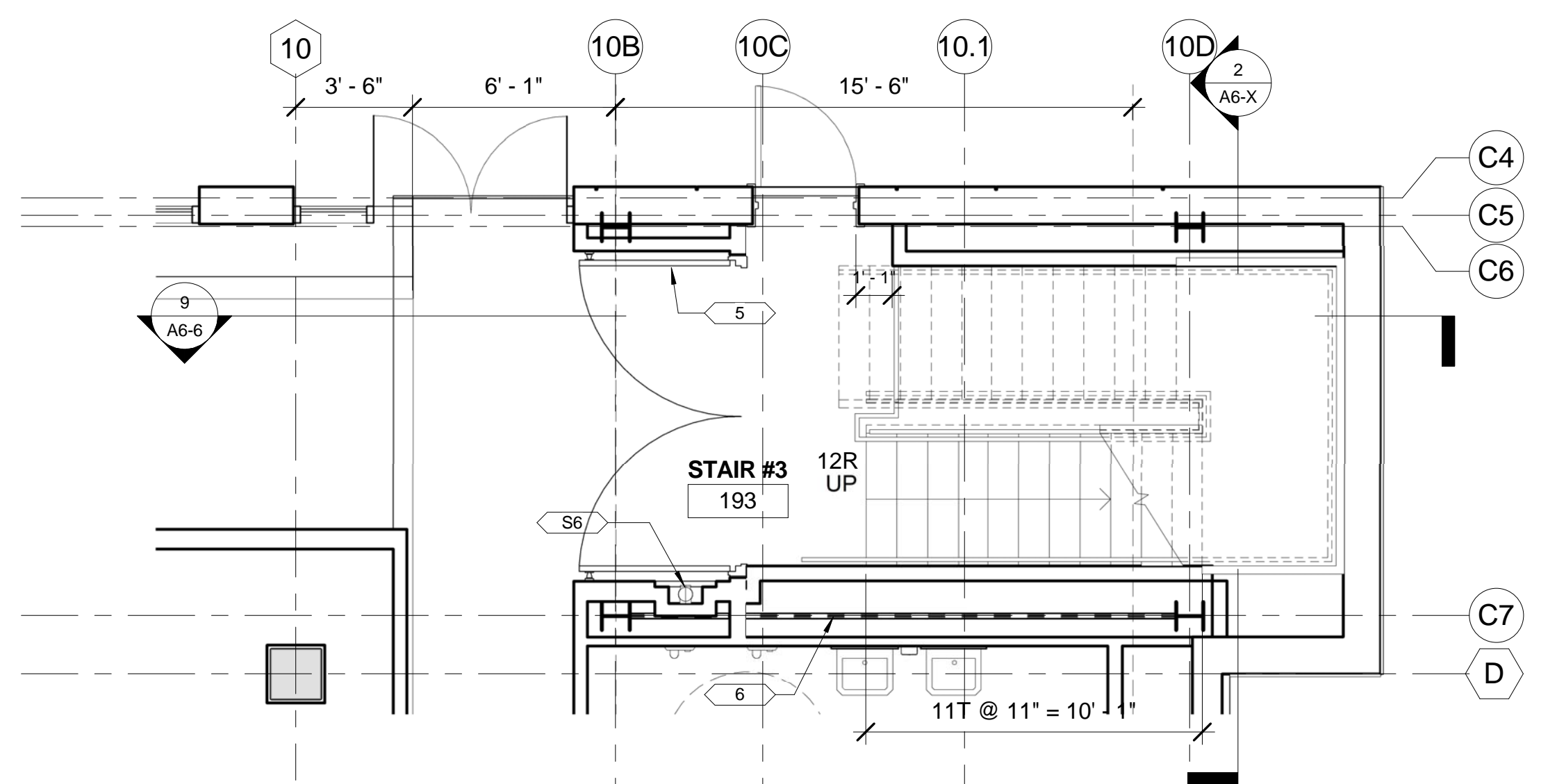
**7 STAIR #3 - 700 LEVEL PLAN**  
A6-6 1/4" = 1'-0" (REF: 1/A2-7)



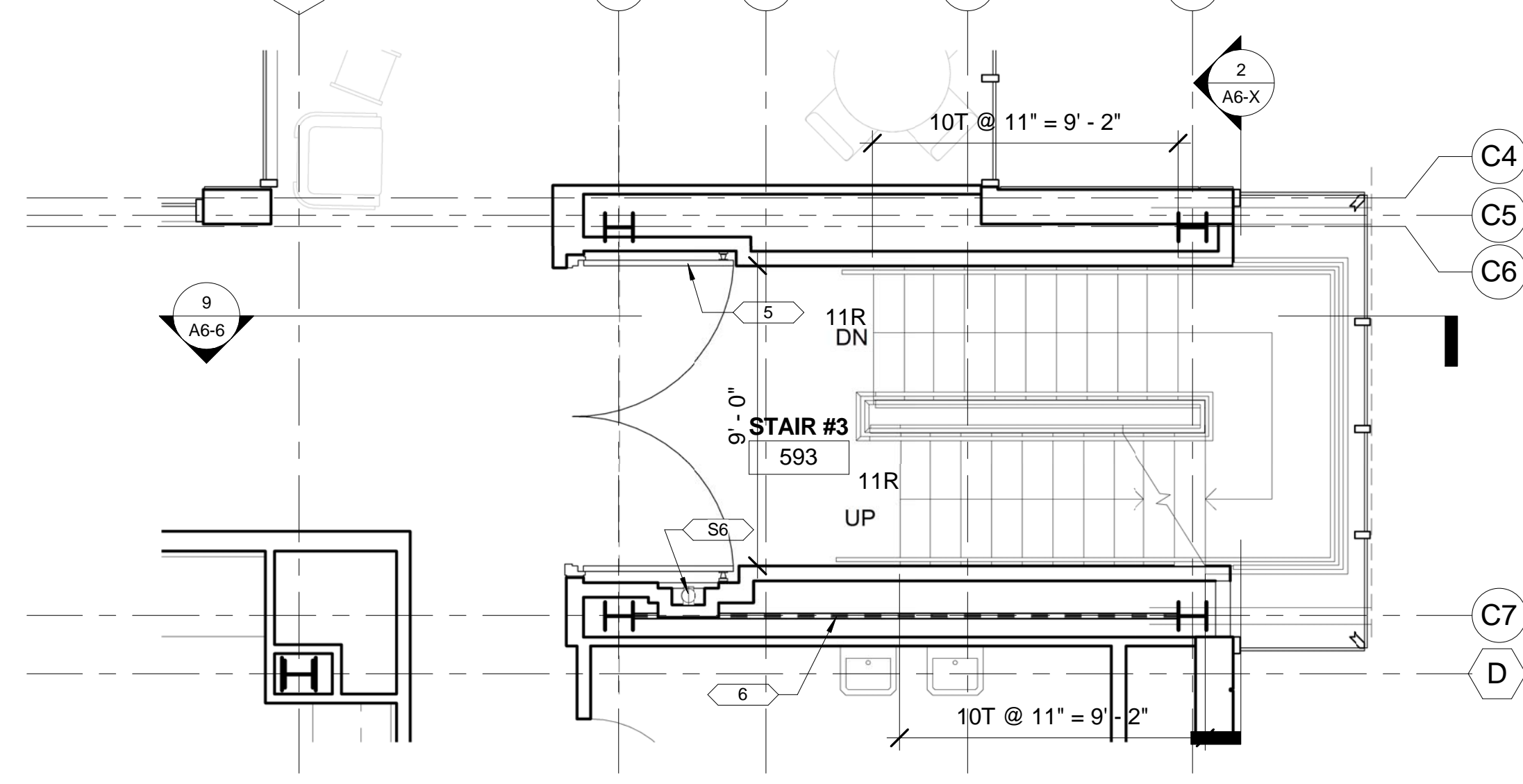
**2 STAIR #3 - 200 LEVEL PLAN**  
A6-6 1/4" = 1'-0" (REF: 1/A2-2)



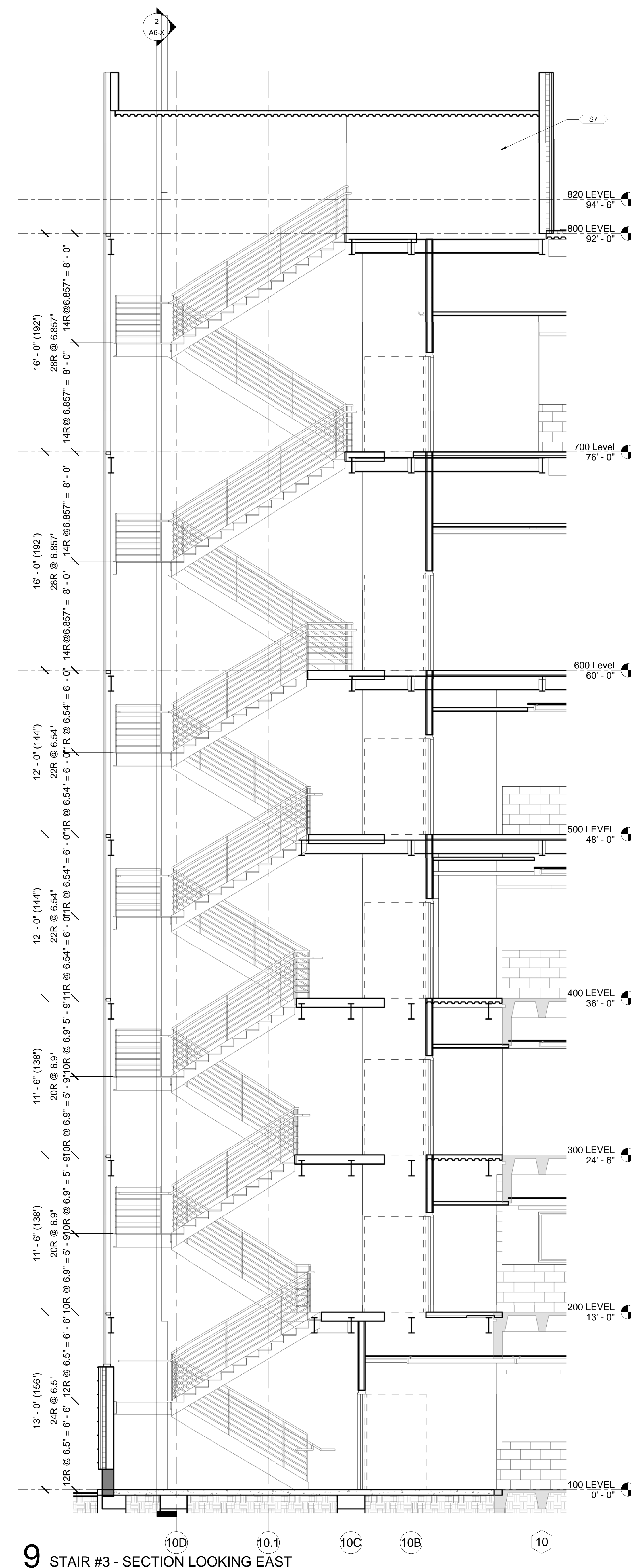
**6 STAIR #3 - 600 LEVEL PLAN**  
A6-6 1/4" = 1'-0" (REF: 1/A2-6)



**1 STAIR #3 - 100 LEVEL PLAN**  
A6-6 1/4" = 1'-0" (REF: 1/A2-1)



**5 STAIR #3 - 500 LEVEL PLAN**  
A6-6 1/4" = 1'-0" (REF: 1/A2-5)



**9 STAIR #3 - SECTION LOOKING EAST**  
A6-6 1/4" = 1'-0" (REF: 1/A2-1)

TOILET ACCESSORIES KEYNOTES	
Key Value	Keynote Text
2	DISPLAY CASE
3	FULL HEIGHT GLASS SLIDING DOORS
4	RAISED FINISHED FLOOR ON FLOOR SLAB
5	FIRE RATED HOLD OPEN DOORS, SEE A7 SERIES
6	CROSS BRACING, SEE STRUCTURAL DRAWINGS
7	SIDE COILING FIRE DOOR W/ EMERGENCY EGRESS
8	FIXED TABLE W/ MODESTY PANEL
9	RECESSED AV CABINET
10	MOVEABLE PODIUM
11	PIVOTING WALL UNIT W/ TACKABLE SURFACE
12	SURFACE MOUNTED COMPACT SHELVING UNIT
13	RAISED RESILIENT HARDBOARD FLOOR ON NEOPRENE PADS (SEE S/A7-2 FOR DETAILS)
14	ACOUSTICAL WALL PANELS
15	GUARDRAIL 42" AFF WITH GLASS INFILL PANELS
C1	BARRIER CEILING ABOVE FINISHED CEILING (SEE 4/A7-2 FOR DETAILS)
C2	EXPOSED STRUCTURAL SLAB/DECK WITH COMBINATION OF ABSORPTION AND REFLECTIVE CLOUDS
S1	GUARDRAIL 42" AFF
S2	HANDRAIL 36" AFF
S3	GUARDRAIL / HANDRAIL
S4	METAL PAN STAIR W/ CONCRETE FILL
S5	CHANNEL STRINGER
S6	RECESSED HOSE VALVE
S7	PROVIDE LADDER & ROOF HATCH ACCESS
T1	36" GRAB BAR
T1A	18" GRAB BAR
T2	42" GRAB BAR
T3	WATER CLOSET
T3A	ADA WATER CLOSET
T4	URINAL
T5	LAVATORY
T6	30"W MIRROR
T7	TOILET PAPER DISPENSER
T11	SOAP DISPENSER
T14	HAND DRYER
T14A	ADA HAND DRYER
T15	DRINKING FOUNTAIN W/ ELEC. WATER COOLER

1	12.23.2010	SD PRICING SET			
2	01.18.2011	100% SD SET			
3	09.15.2011	100% DD / PRICING SET			
No.	Date	Issue	No.	Date	Issue

Holabird & Root / Holly & Smith LLC expressly disclaims any responsibility arising from any unauthorized use of these plans, drawings and notes. The Owner and Architect assume no responsibility for use of incorrect scale. Drawings are not to be scaled.

*This drawing copy may have been reproduced at a size different than originally drawn. The Owner and Architect assume no responsibility for use of incorrect scale. Drawings are not to be scaled.*

No. published - All rights reserved.

**HOLABIRD & ROOT** | **HOLLY & SMITH LLC**

140 South Dearborn Avenue | 2302 Magazine Street  
Suite 1200 | New Orleans, LA 70130

Chicago, IL 60660 | 985.345.5210 (ext)  
312.357.1771 (ext) |  
312.357.1909 (fax)

www.holabird.com | www.hollyandsmith.com

Project Number: 15248.00  
Drawn: C. VANLEER  
Checked: Checker  
Proj. Arch./Eng.: A. WHITE

**MONROE HALL RENOVATION**  
Project Name

ENLARGED PLANS - STAIR #3  
Sheet Name  
Drawing No. **A6-6**