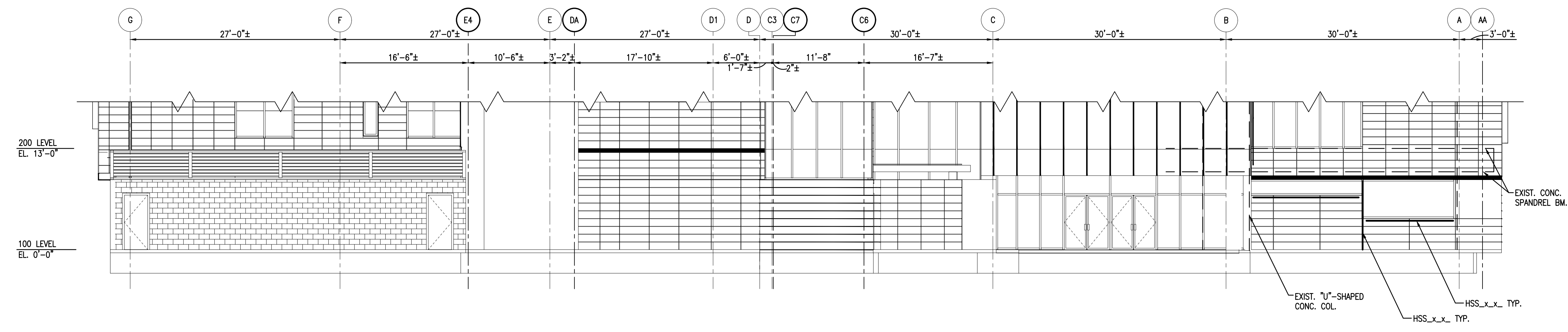
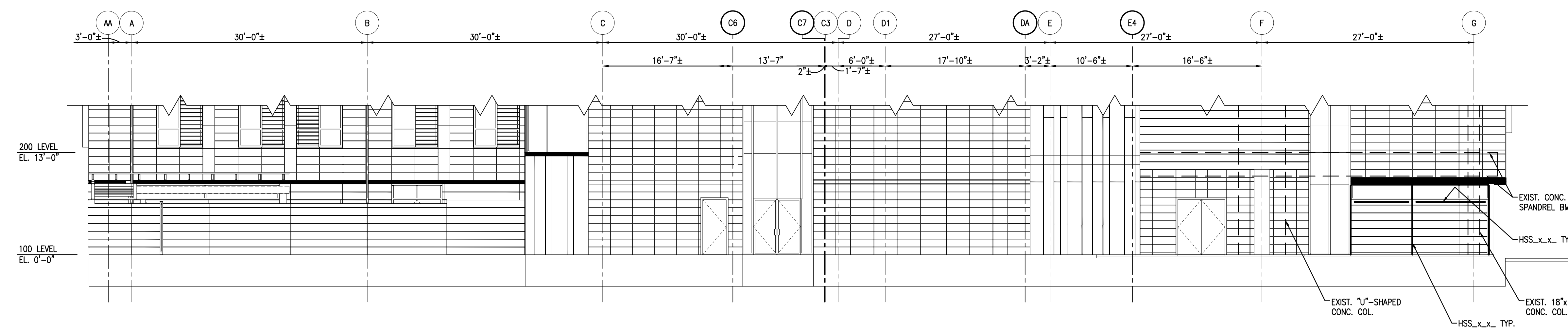


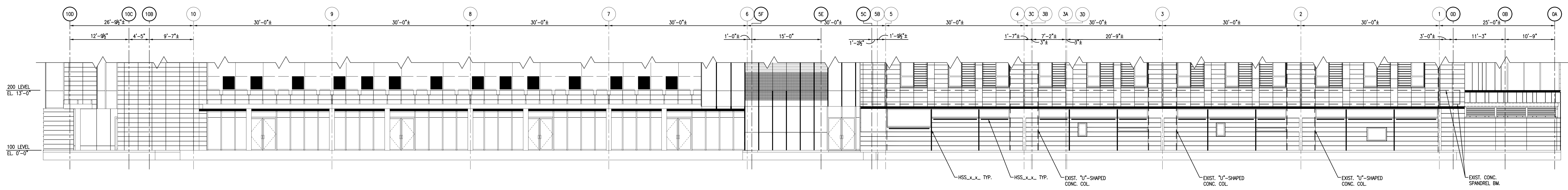
1 ELEVATION-EAST  
S7-0  
1/8"=1'-0"



2 ELEVATION-NORTH  
S7-0  
1/8"=1'-0"



3 ELEVATION-SOUTH  
S7-0  
1/8"=1'-0"



4 ELEVATION-WEST  
S7-0  
1/8"=1'-0"

**PRELIMINARY**  
NOT FOR CONSTRUCTION

1	12.23.10	SD PRICING SET			
2	01.18.11	100% SD SET			
3	05.18.11	LNO Meeting			
4	09.15.11	100% DD/ PRICING			
No.	Date	Issue	No.	Date	Issue

Holabird & Root / Holly & Smith LLC expressly disclaims any responsibility arising from any unauthorized use of these plans, drawings and notes. Any authorization must be in writing.  
This drawing copy may have been reproduced at a size different than originally drawn. The Owner and Architect assume no responsibility for use of incorrect scale. Drawings are not to be scaled.  
Not published - All rights reserved.

**HOLABIRD & ROOT**  
140 South Dearborn Avenue  
Suite 500  
Chicago, IL 60660  
312.357.1771 (tel)  
312.357.1909 (fax)  
www.holabird.com

**HOLLY & SMITH LLC**  
541 Julia Street  
Suite 201  
New Orleans, LA 70130  
504.585.1315 (tel)  
504.585.1316 (fax)  
www.hollyandsmith.com

Project Number	15248.00
Drawn	RAB
Checked	JAS
Proj. Arch./Eng.	JAS



<b>EXTERIOR FRAMING ELEVATIONS</b>	
Sheet Name	
Proj. Name	Monroe Hall Renovation
Drawing No.	<b>S7-0</b>