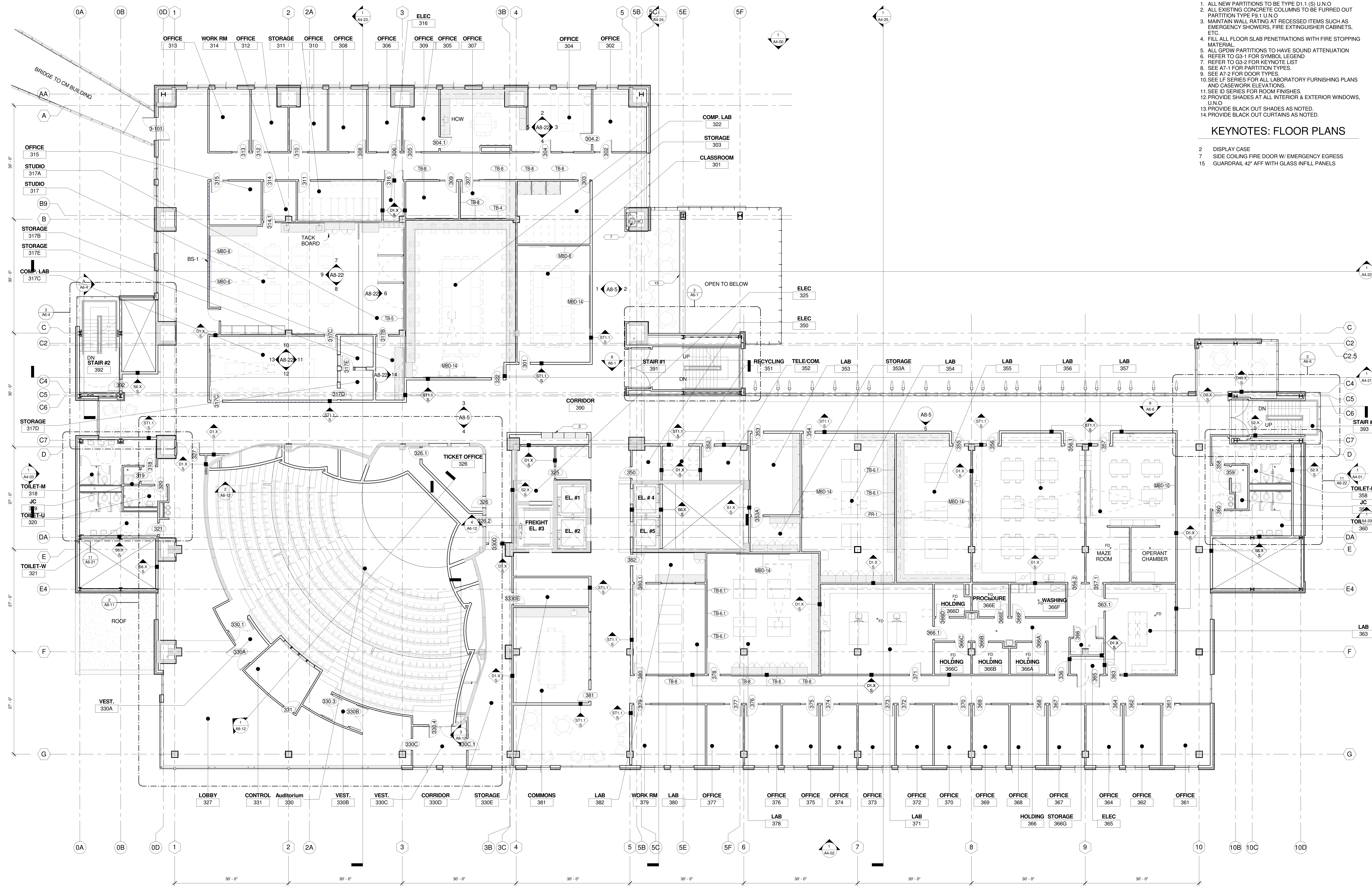


**GENERAL NOTES. FLOOR PLANS**

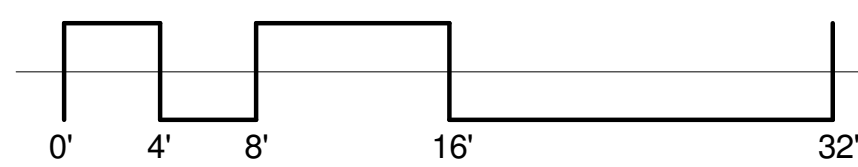
- THESE NOTES APPLY TO SHEETS A2-0 THRU A2-8
1. ALL NEW PARTITIONS TO BE TYPE D1.1 (S) U.N.O.
  2. ALL EXISTING CONCRETE COLUMNS TO BE FURRED OUT MATERIAL.
  3. MAINTAIN WALL RATING AT RECESSED ITEMS SUCH AS EMERGENCY SHOWERS, FIRE EXTINGUISHER CABINETS, ETC.
  4. FILL ALL FLOOR SLAB PENETRATIONS WITH FIRE STOPPING MATERIAL.
  5. ALL GPDW PARTITIONS TO HAVE SOUND ATTENUATION.
  6. REFER TO G3-1 FOR SYMBOL LEGEND.
  7. REFER TO G3-2 FOR KEYNOTE LIST.
  8. SEE A7-1 FOR PARTITION TYPES.
  9. SEE A7-2 FOR DOOR TYPES.
  10. SEE LF SERIES FOR ALL LABORATORY FURNISHING PLANS AND CASEWORK ELEVATIONS.
  11. SEE ID SERIES FOR ROOM FINISHES.
  12. PROVIDE SHADES AT ALL INTERIOR & EXTERIOR WINDOWS, U.N.O.
  13. PROVIDE BLACK OUT SHADES AS NOTED.
  14. PROVIDE BLACK OUT CURTAINS AS NOTED.

**KEYNOTES: FLOOR PLANS**

- 2 DISPLAY CASE
- 7 SIDE COILING FIRE DOOR W/ EMERGENCY EGRESS
- 15 GUARDRAIL 42" AFF WITH GLASS INFILL PANELS



**1 300 Level**  
A2-3 1/8" = 1'-0" (REF: 8 / A6-1)



No.	Date	Issue	No.	Date	Issue
1	12.23.2010	SD PRICING SET			
2	01.18.2011	100% SD SET			
3	09.15.2011	100% DD / PRICING SET			

Holabird & Root / Holly & Smith LLC expressly disclaims any responsibility arising from any unauthorized use of these plans, drawings and notes. Any authorization must be in writing.  
This drawing copy may have been reproduced at a size different than originally drawn. The Owner and Architect assume no responsibility for use of incorrect scale. Drawings are not to be scaled.  
Not published - All rights reserved.

**HOLABIRD & ROOT** | **HOLLY & SMITH LLC**  
140 South Dearborn Avenue | 2302 Magazine Street  
Suite 500 | New Orleans, LA 70130  
Chicago, IL 60660  
312.357.1771 (tel) | 985.345.5210 (tel)  
312.357.1909 (fax) |  
www.holabird.com | www.hollyandsmith.com

Project Number: 15248.00  
Drawn: M. MARTIN / C. VANLEER  
Checked: A. WHITE  
Proj. Arch./Eng.: A. WHITE



**300 LEVEL FLOOR PLAN**  
Sheet Name: **A2-3**  
Drawing No.