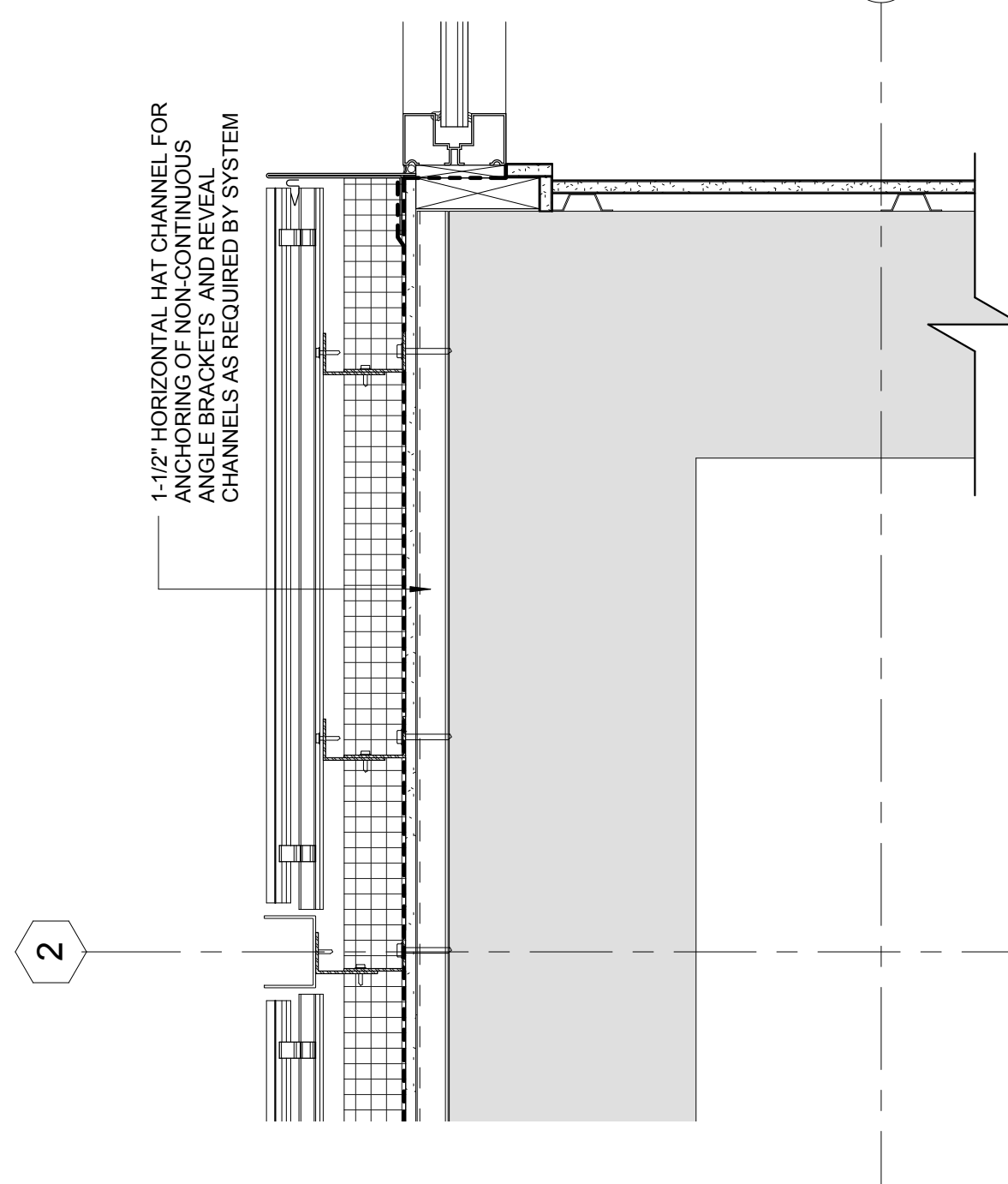
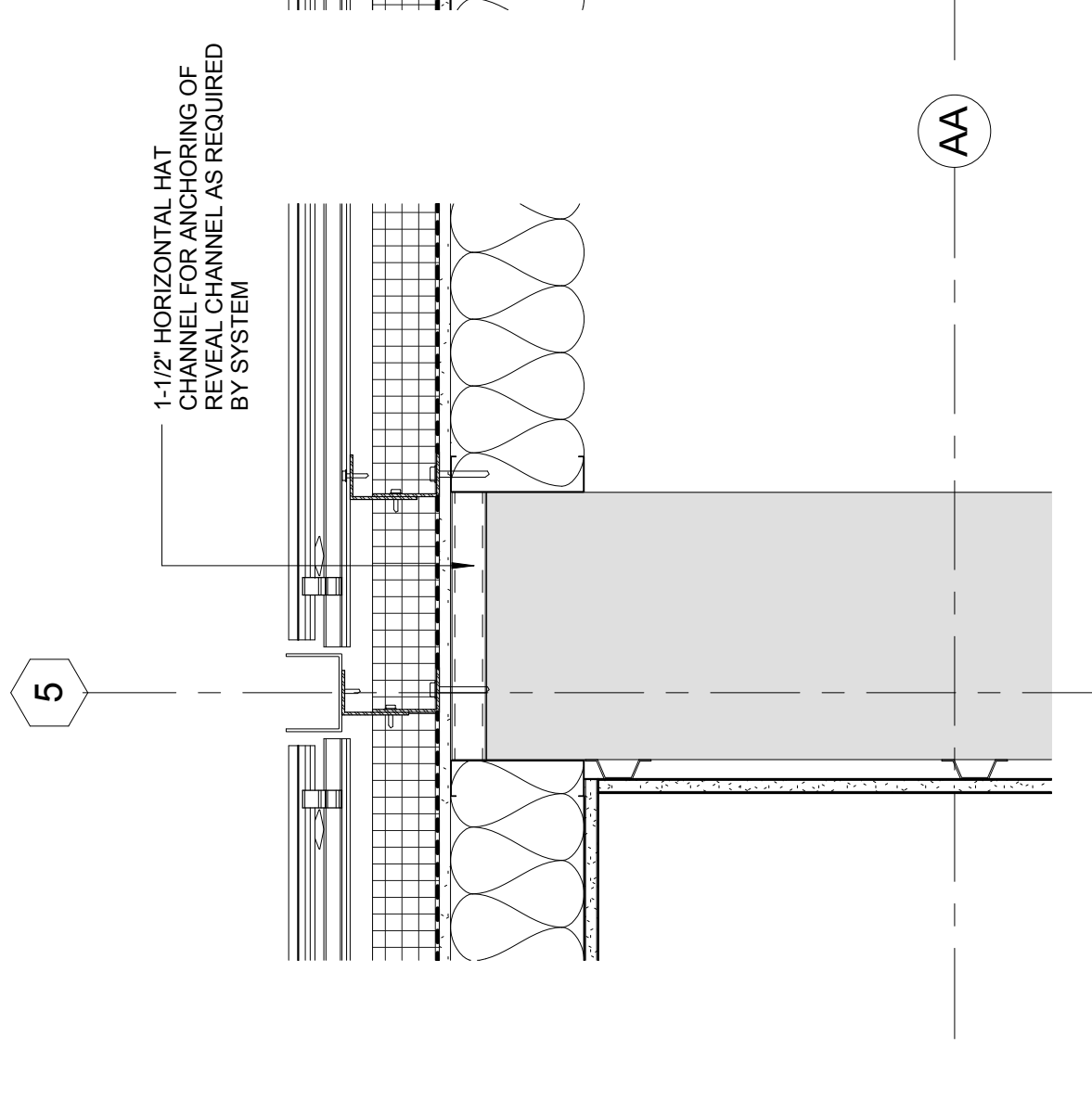


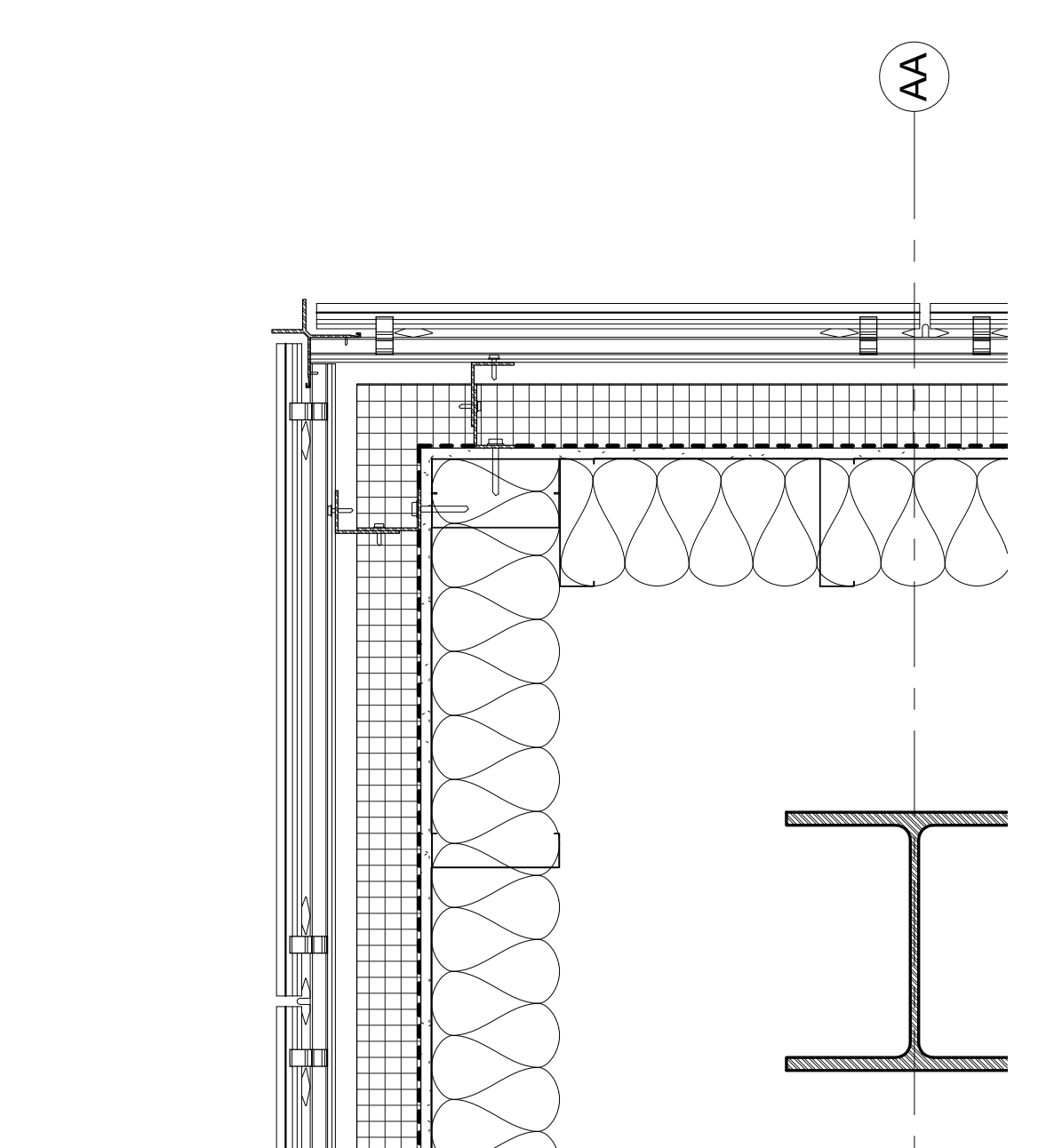
**1** A5-30/1 - PLAN DETAIL - 100 LEVEL  
A5-30 1 1/2" = 1'-0"



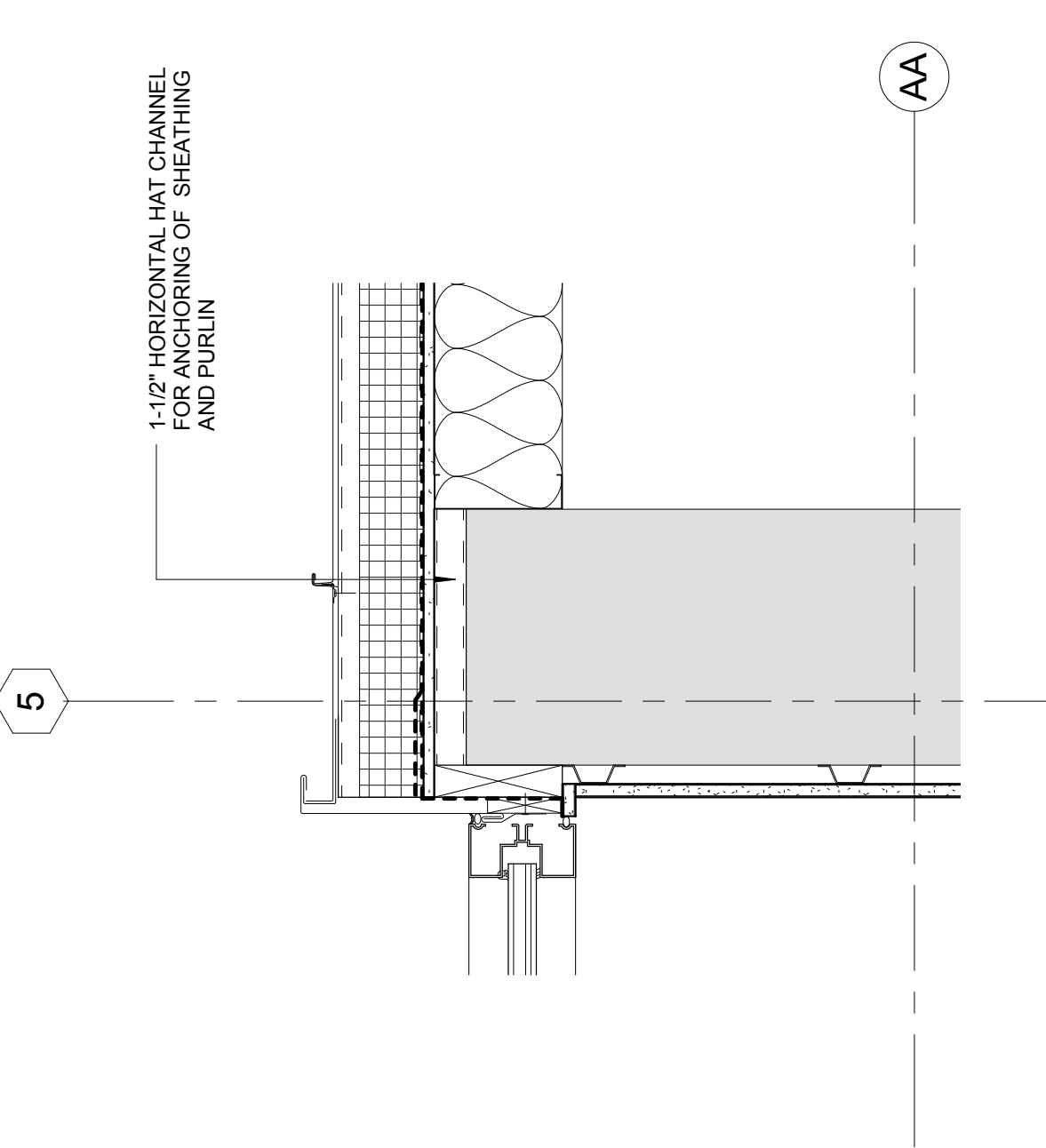
**2** A5-30/2 - PLAN DETAIL  
A5-30 1 1/2" = 1'-0"



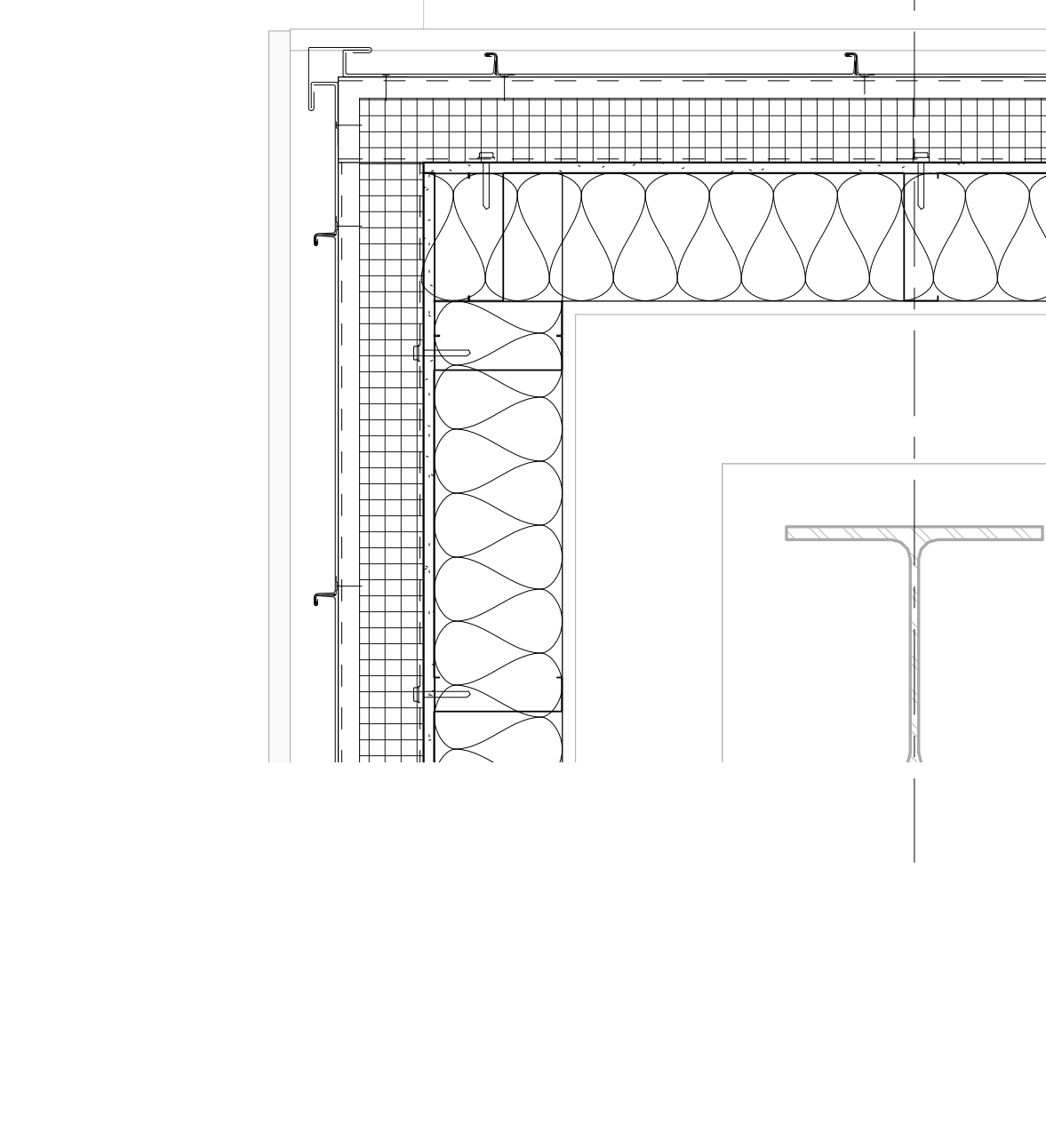
**3** PLAN DETAIL - WEST CORNER (6-A5-30)  
A5-30 1 1/2" = 1'-0"



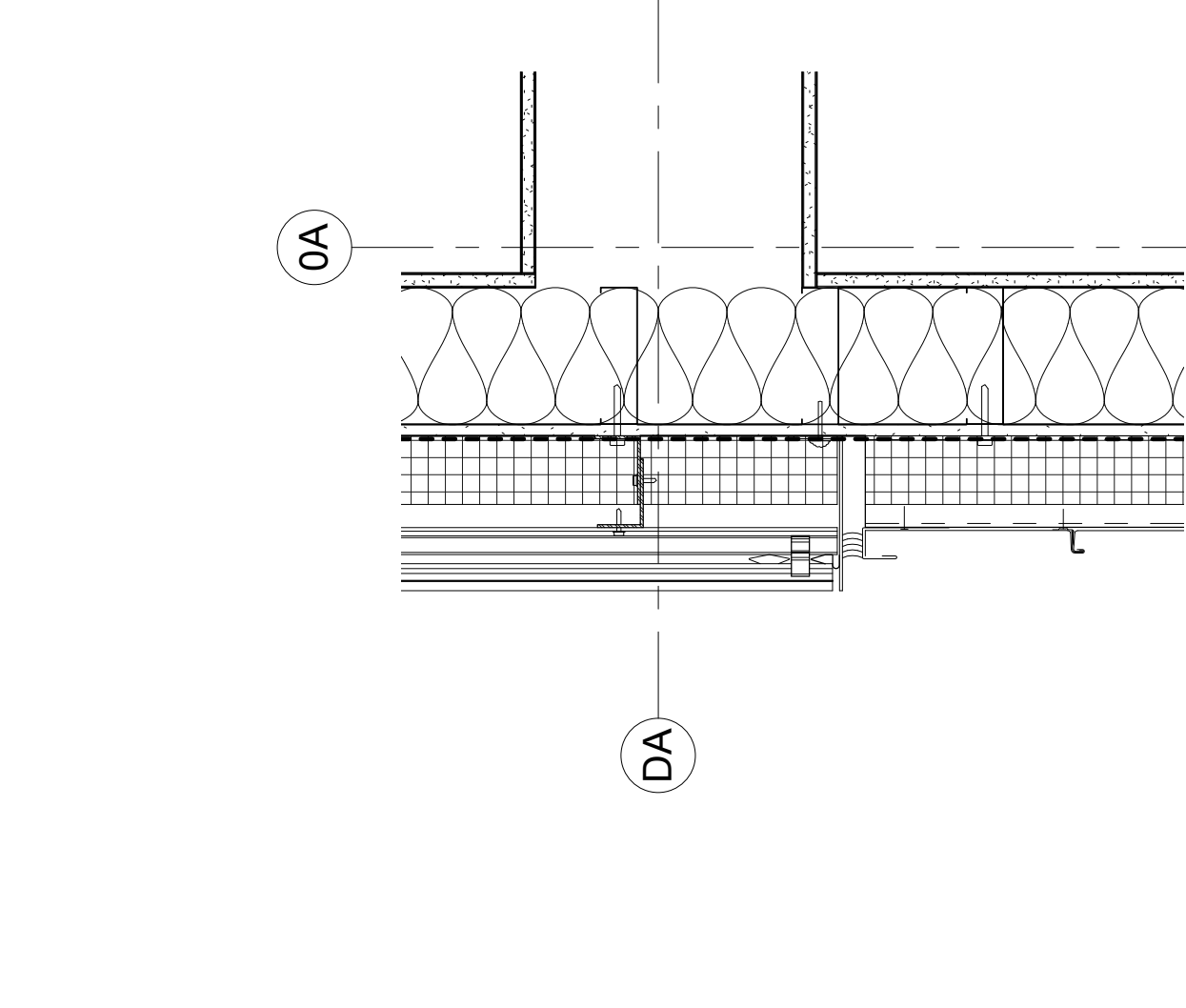
**4** A5-30/04 - PLAN DETAIL  
A5-30 1 1/2" = 1'-0"



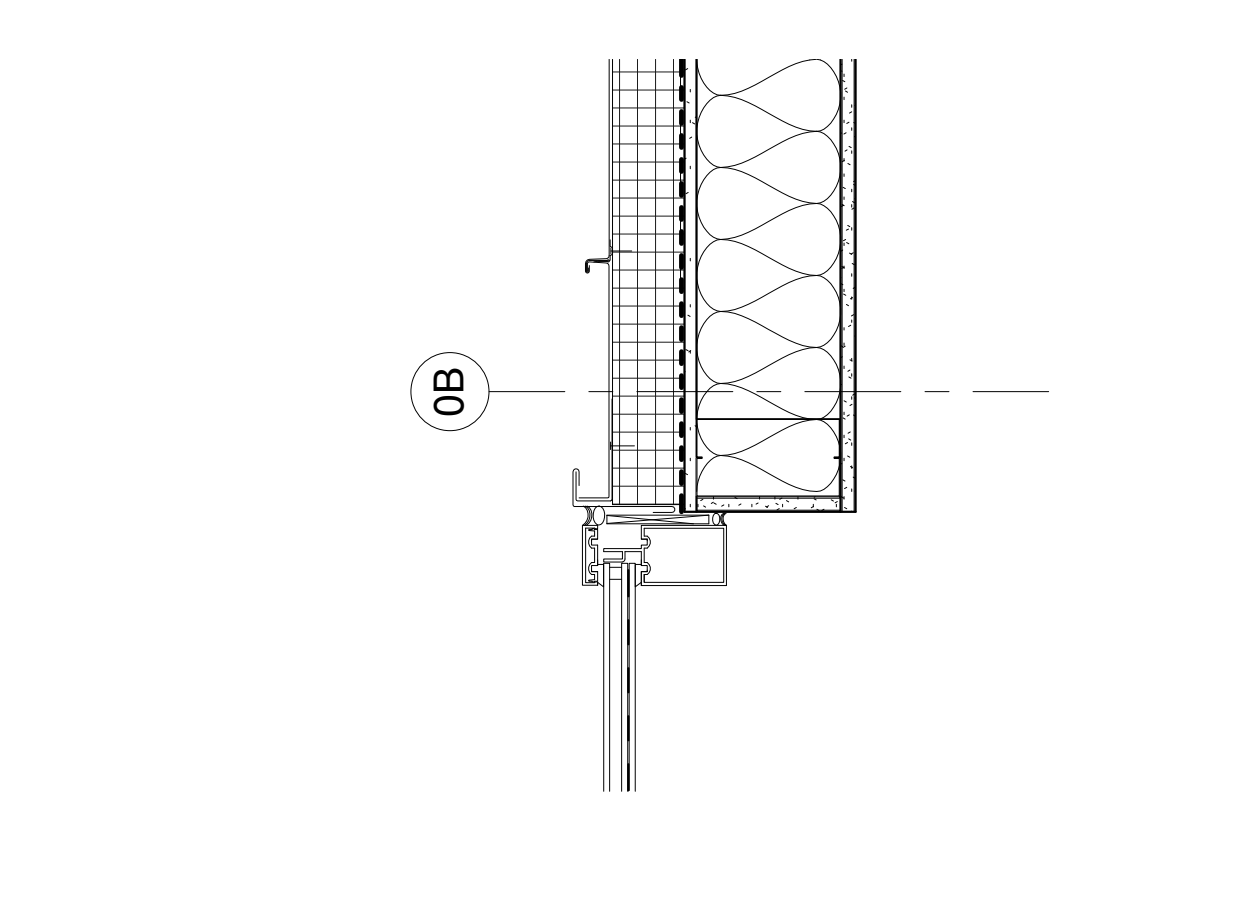
**5** A5-30/5 - PLAN DETAIL - 100 LEVEL  
A5-30 1 1/2" = 1'-0"



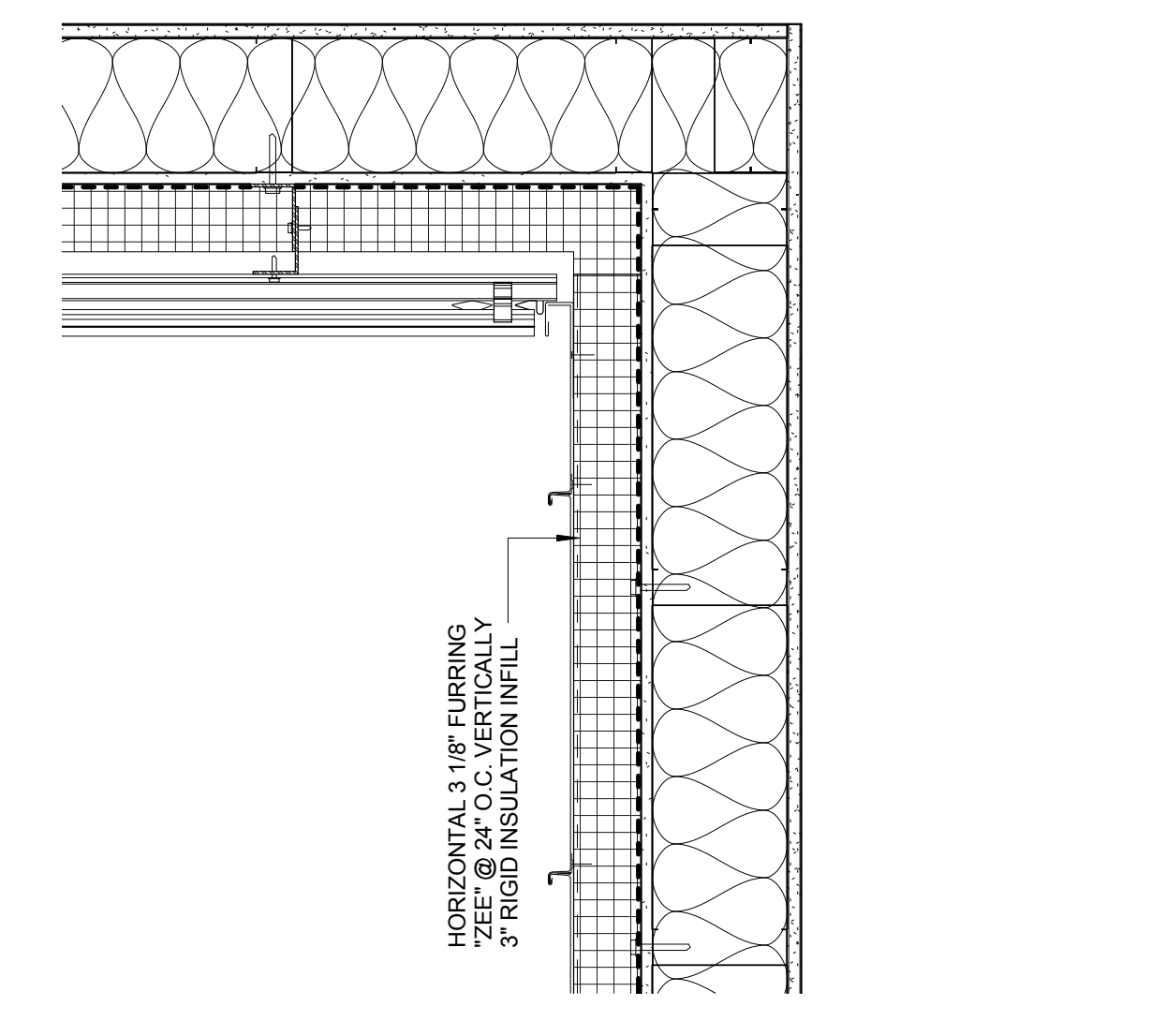
**6** A5-30/06 - PLAN DETAIL - 100 LEVEL  
A5-30 1 1/2" = 1'-0"



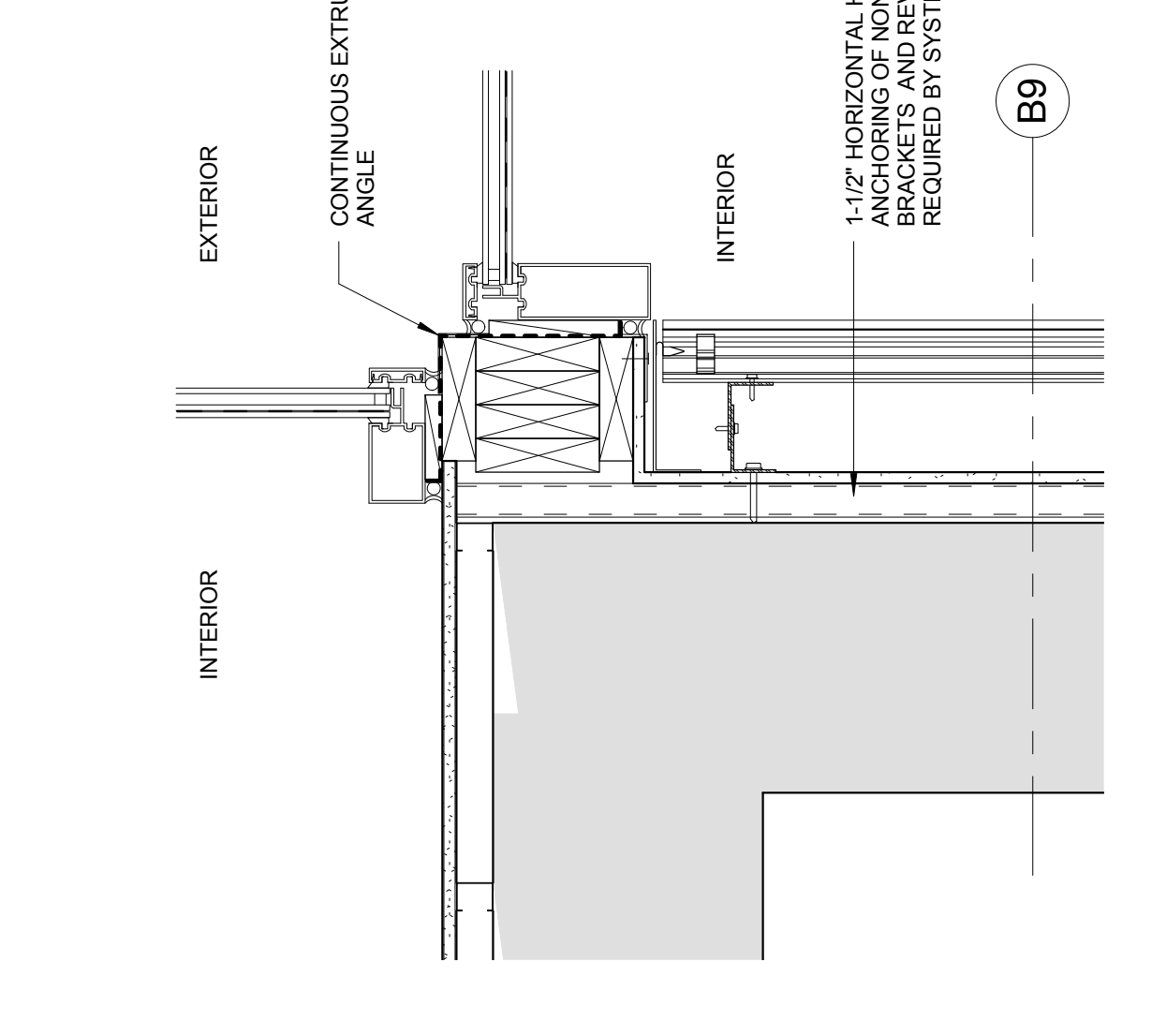
**7** A5-30/7 - PLAN DETAIL  
A5-30 1 1/2" = 1'-0"



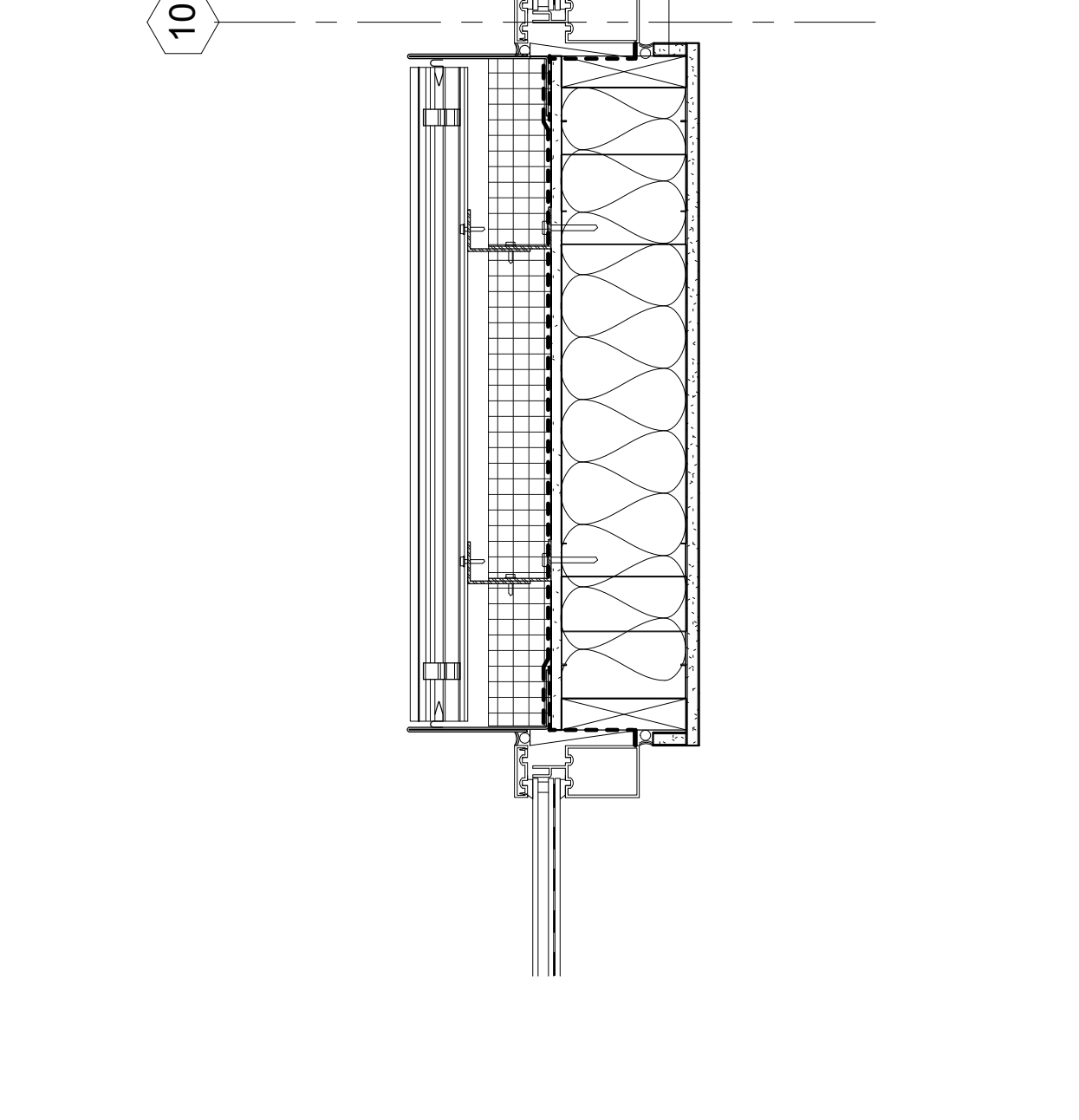
**8** A5-30/8 - PLAN DETAIL  
A5-30 1 1/2" = 1'-0"



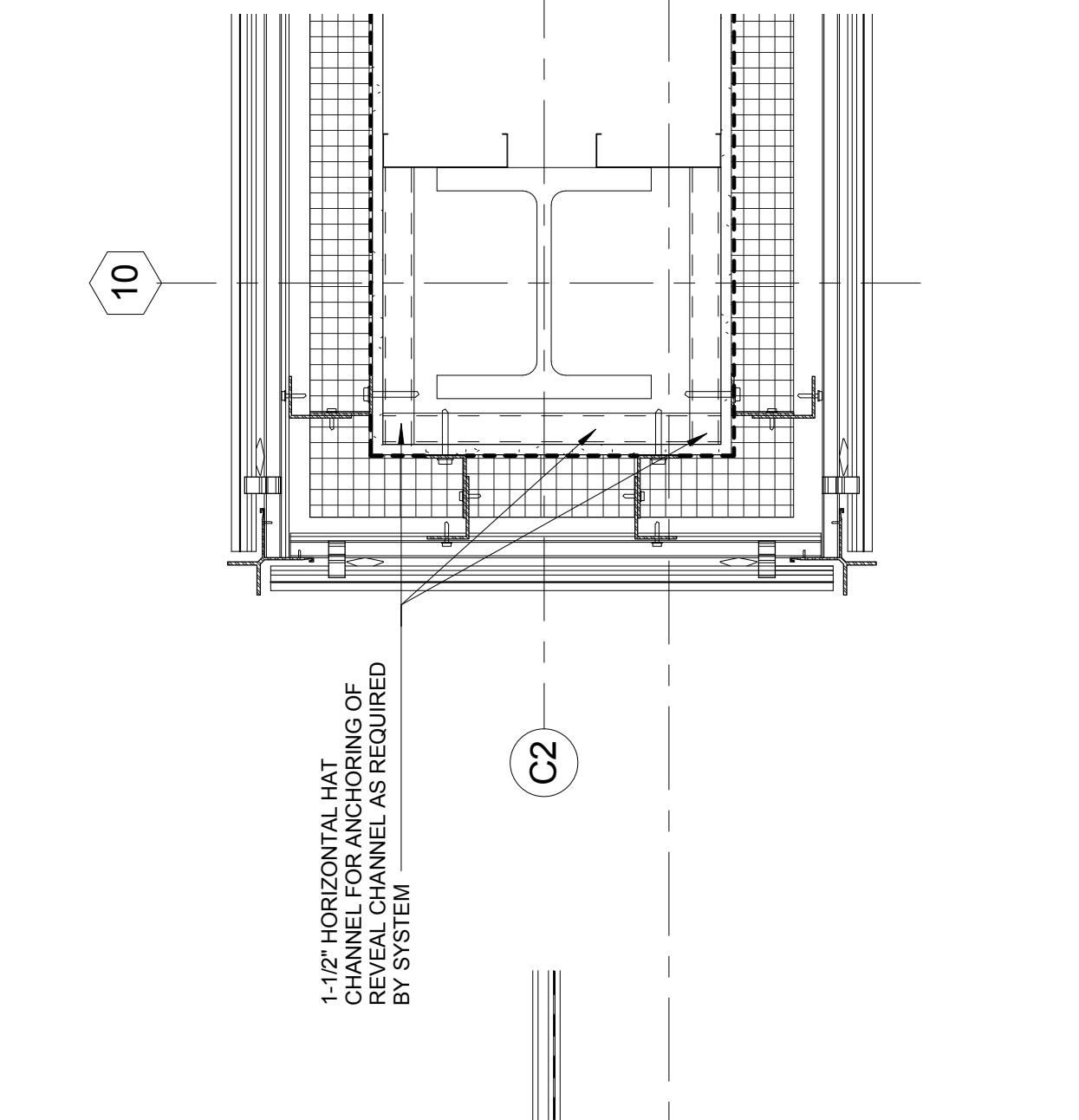
**9** A5-30/9 - PLAN DETAIL  
A5-30 1 1/2" = 1'-0"



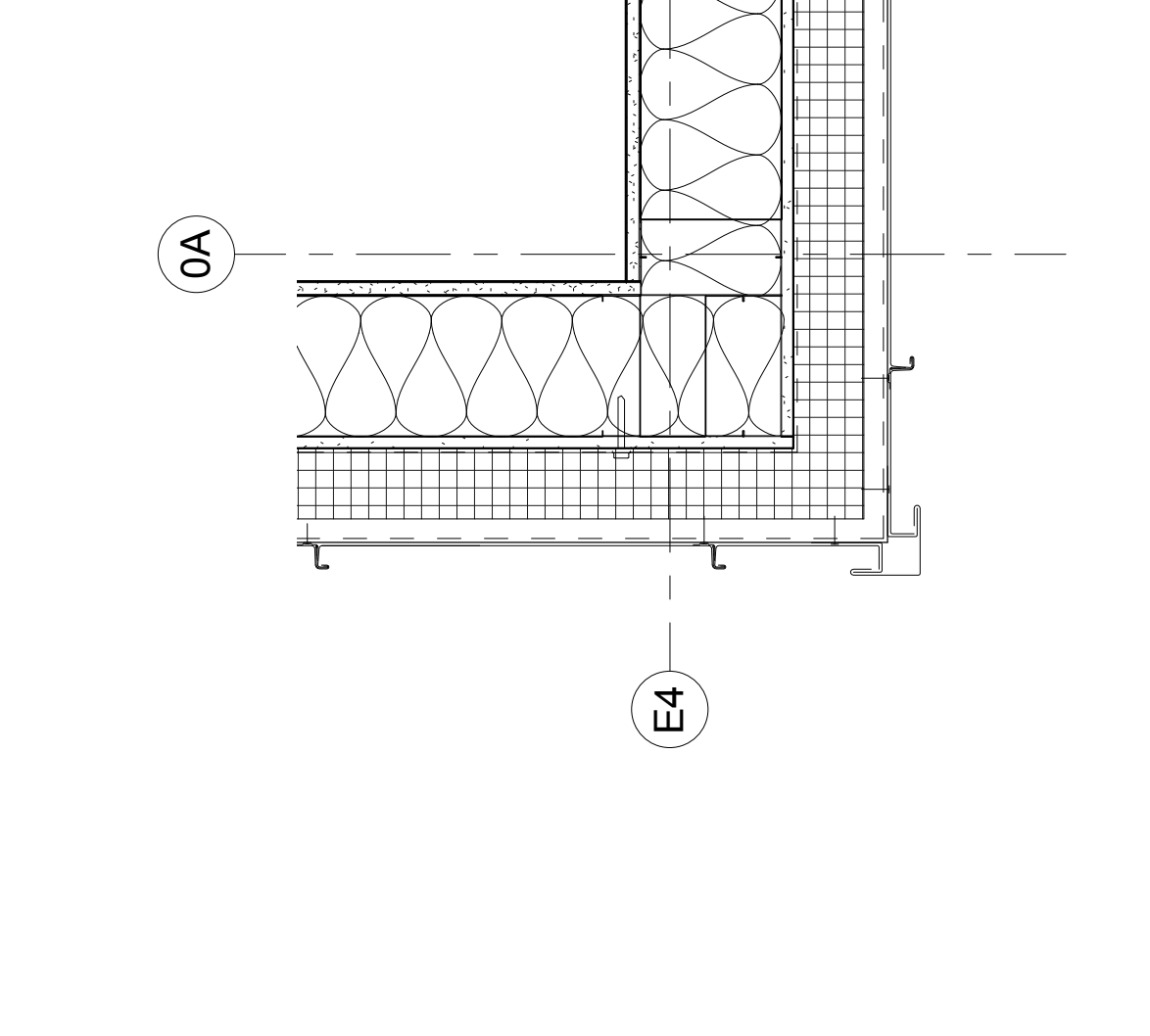
**10** A5-30/10 - PLAN DETAIL  
A5-30 1 1/2" = 1'-0"



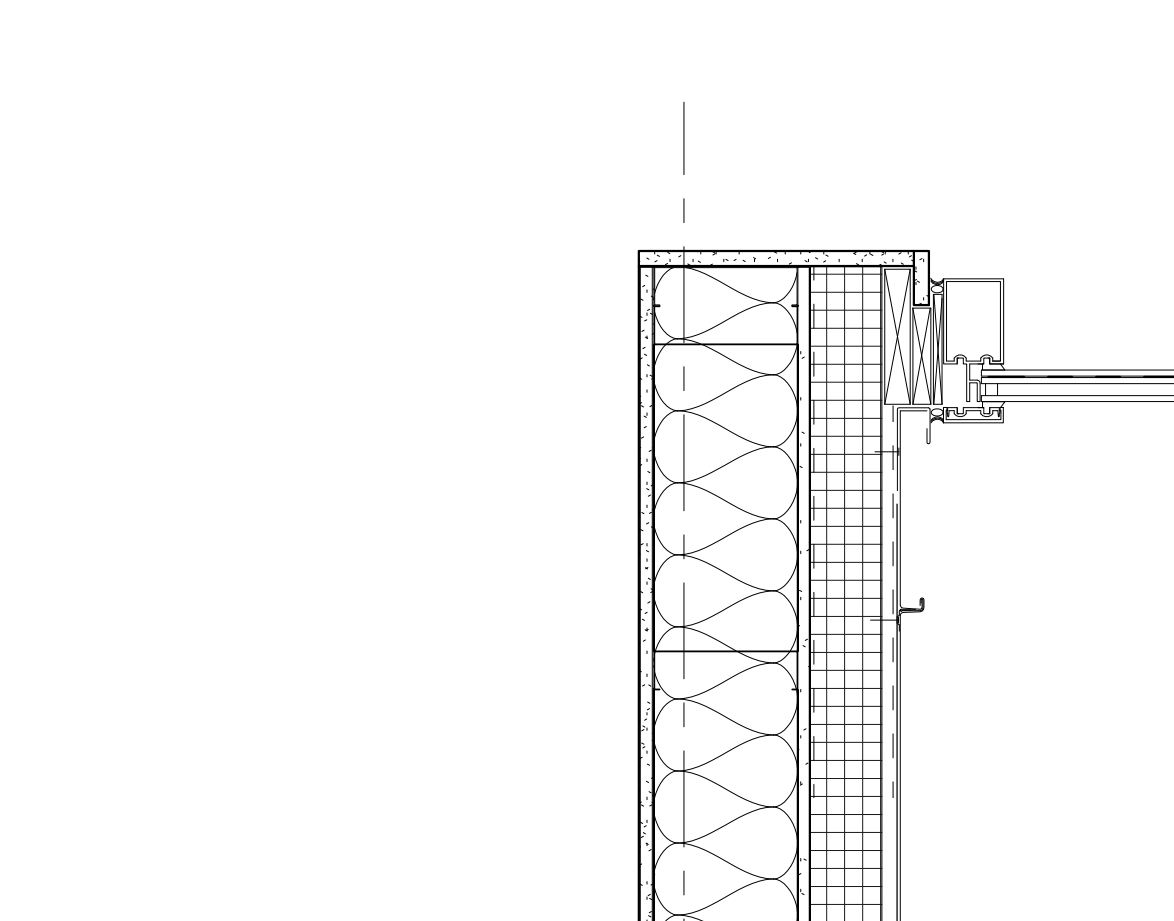
**11** A5-30/11 - PLAN DETAIL - 100 LEVEL  
A5-30 1 1/2" = 1'-0"



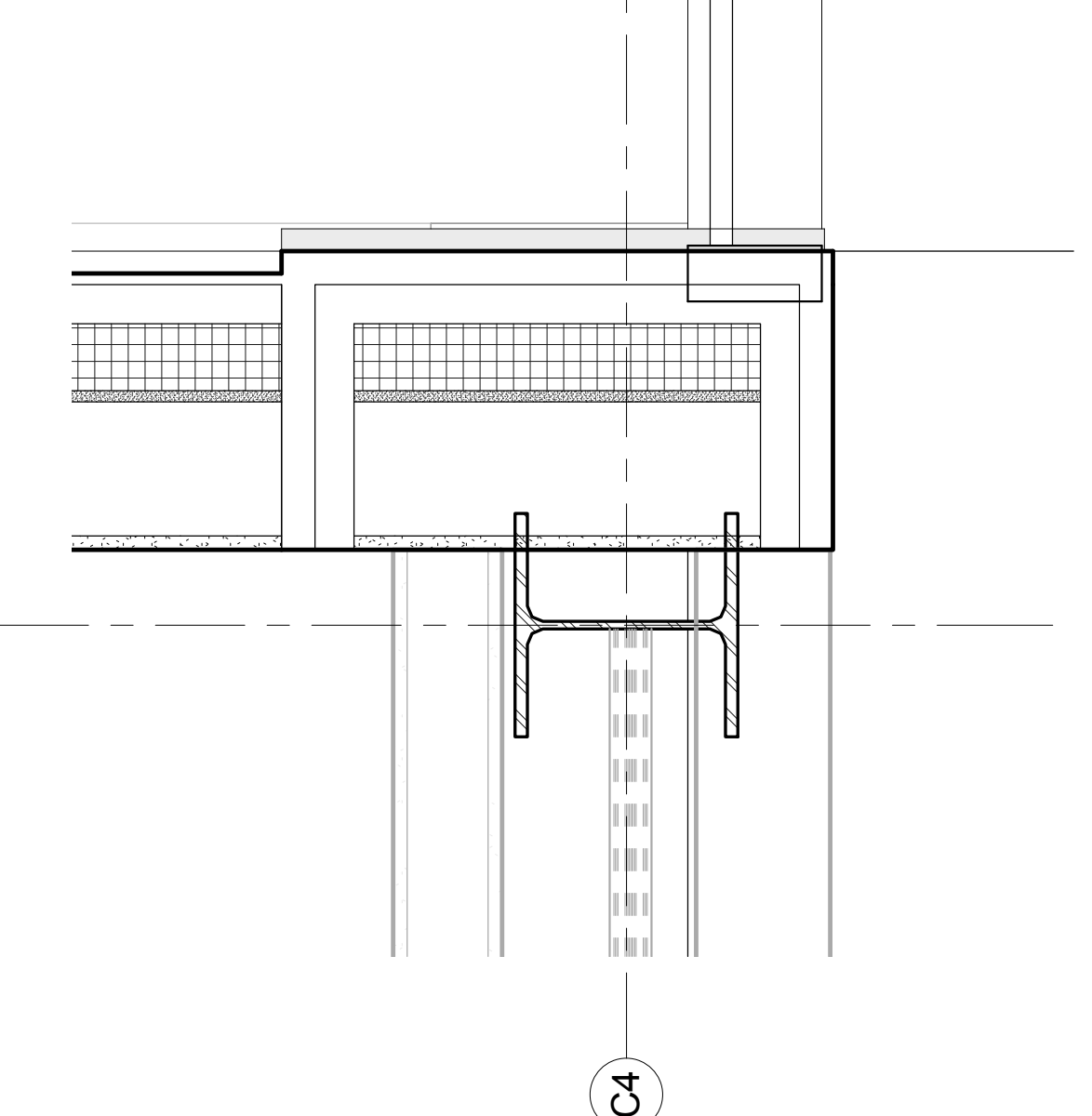
**12** A5-30/12 - PLAN DETAIL - 100 LEVEL  
A5-30 1 1/2" = 1'-0"



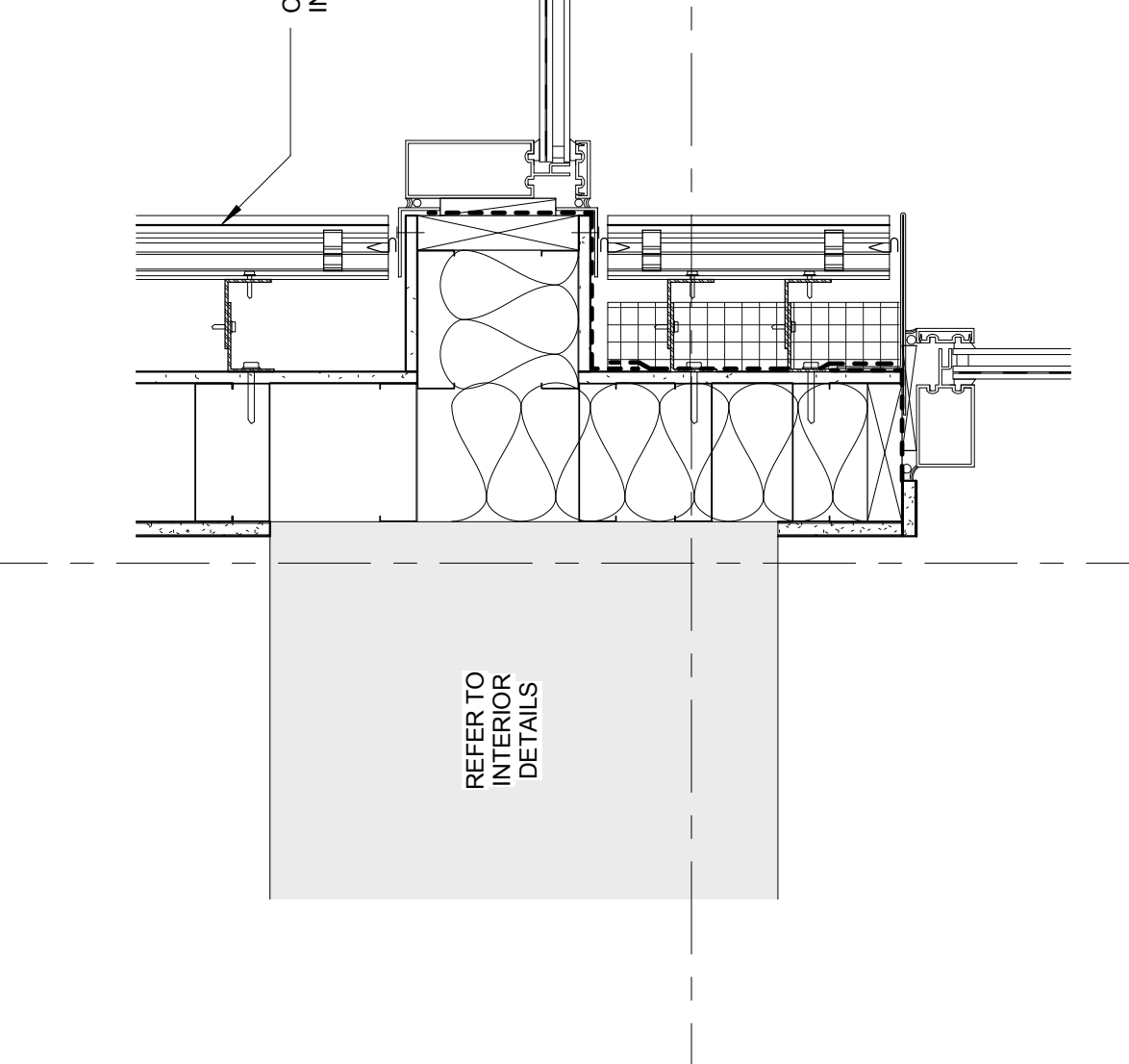
**13** A5-30/13 - PLAN DETAIL  
A5-30 1 1/2" = 1'-0"



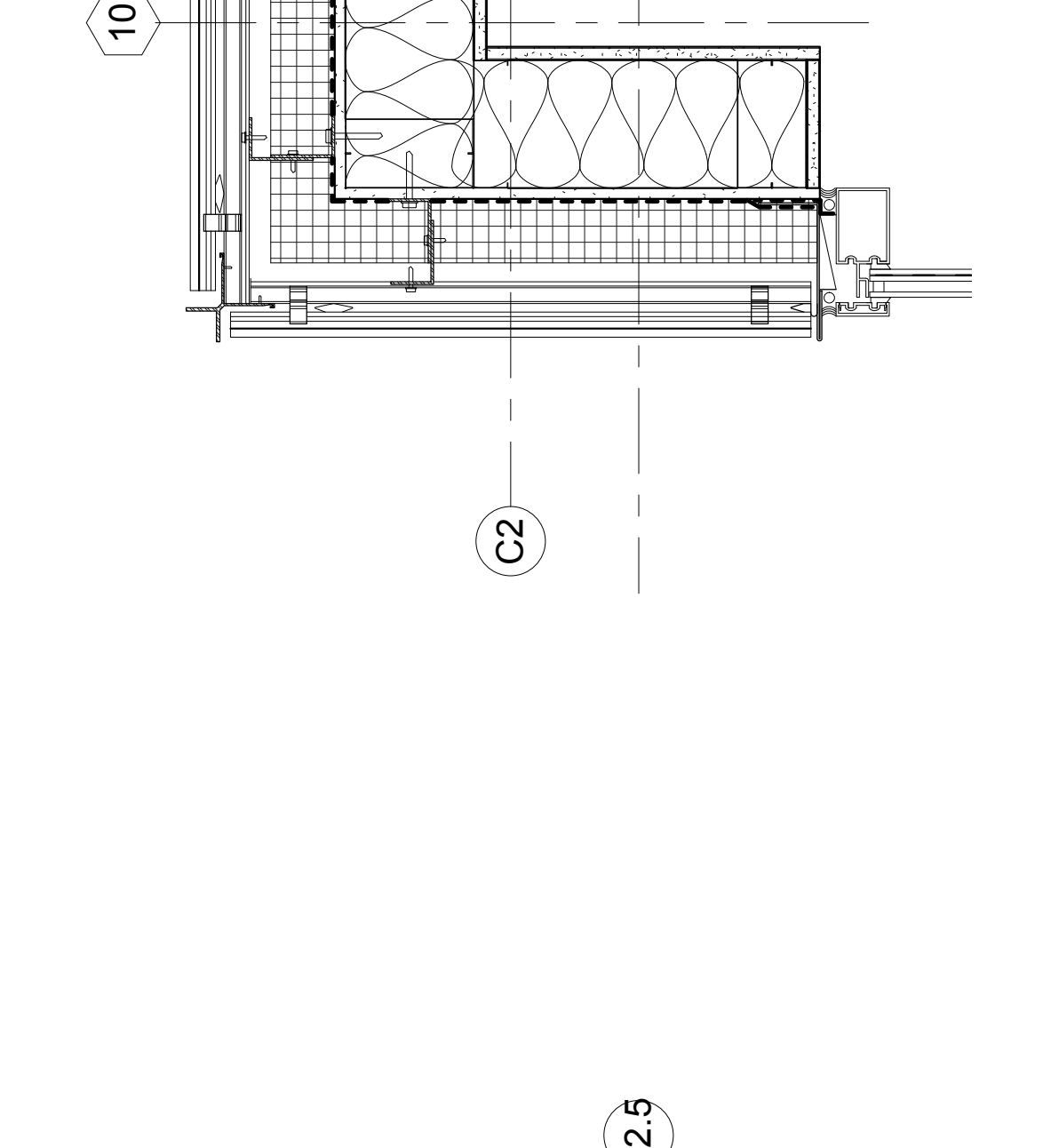
**14** A5-30/14 - PLAN DETAIL  
A5-30 1 1/2" = 1'-0"



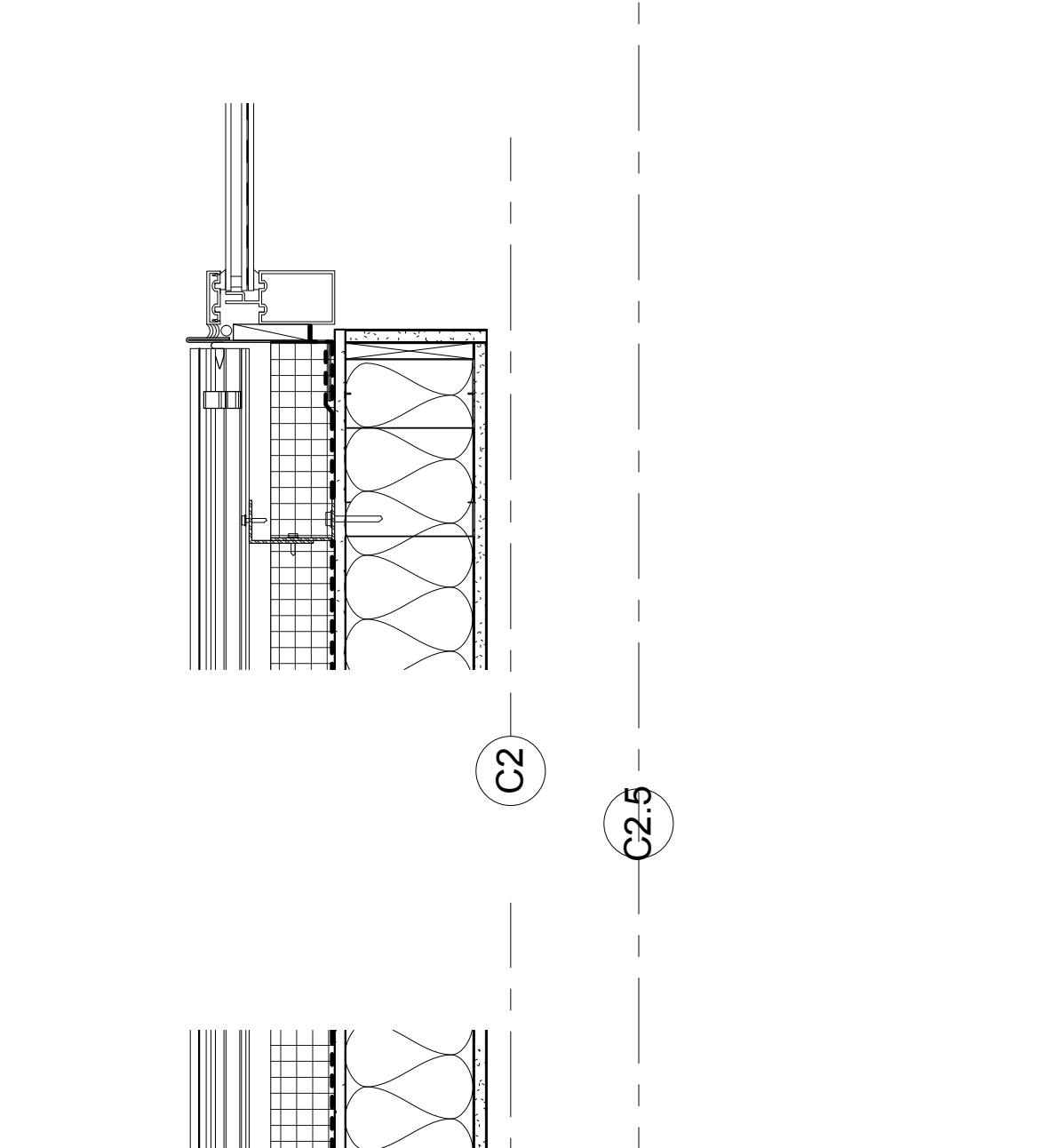
**15** A5-30/15 - PLAN DETAIL - 100 LEVEL  
A5-30 1 1/2" = 1'-0"



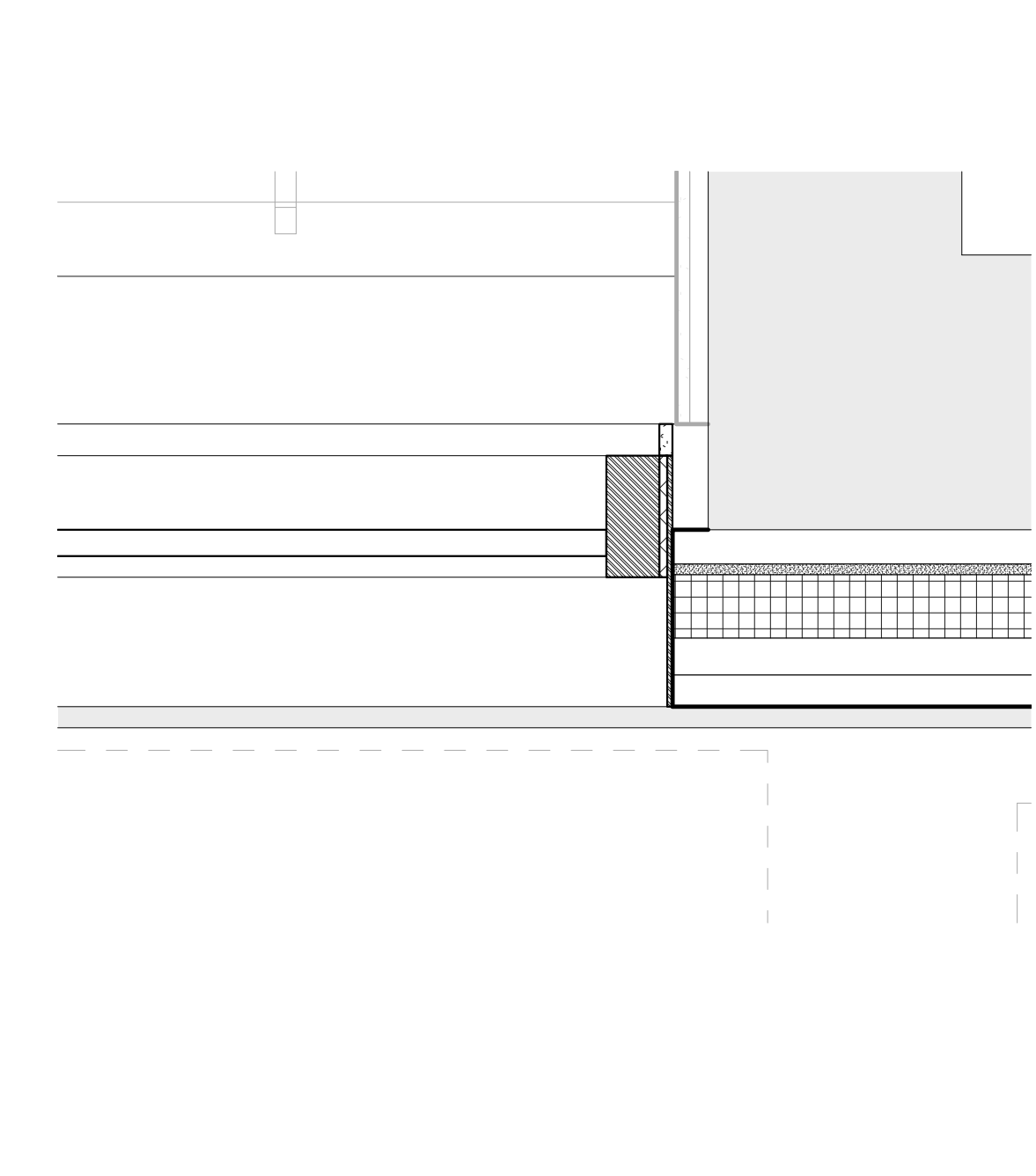
**16** A5-30/16 - PLAN DETAIL  
A5-30 1 1/2" = 1'-0"



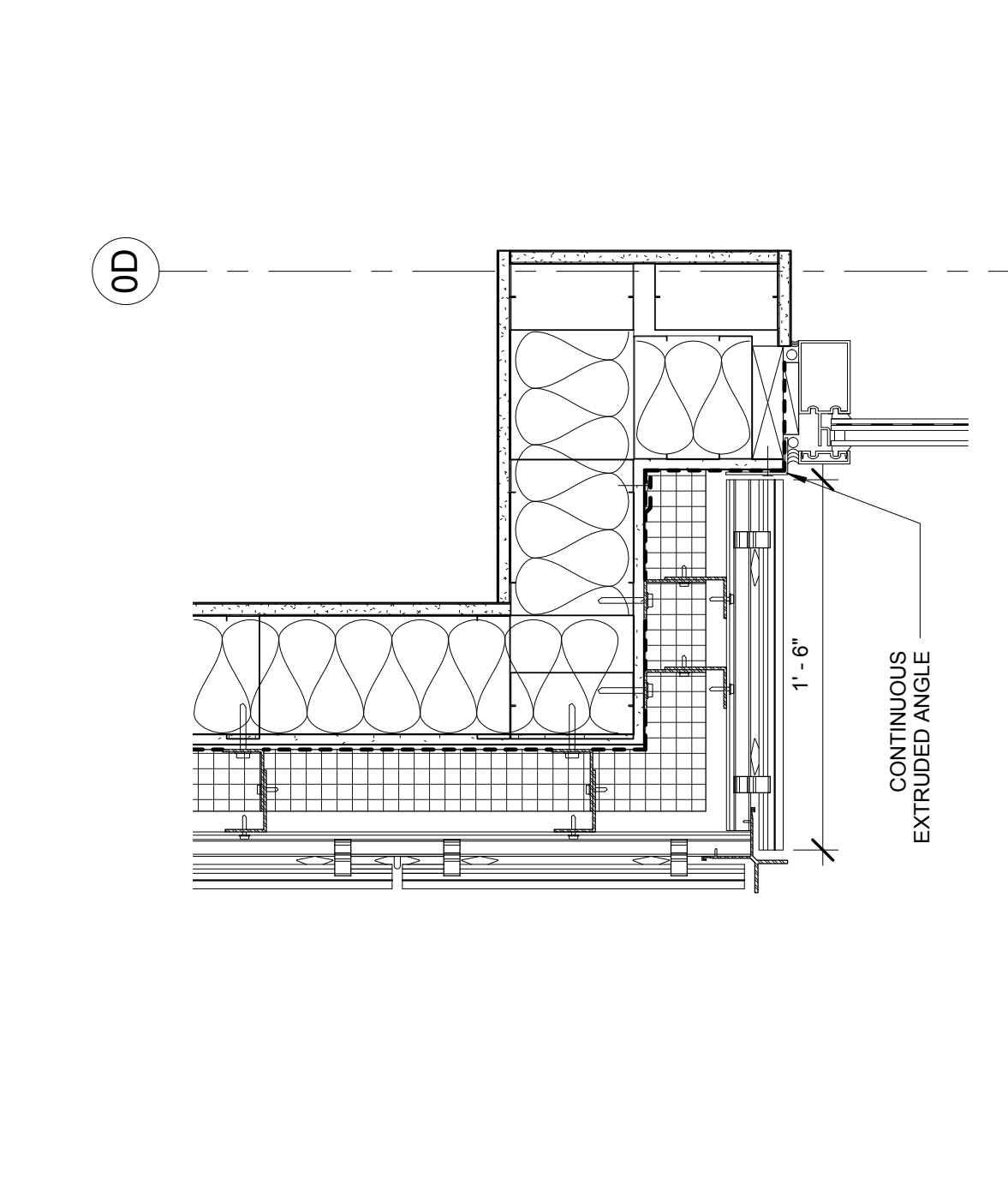
**17** A5-30/17 - PLAN DETAIL  
A5-30 1 1/2" = 1'-0"



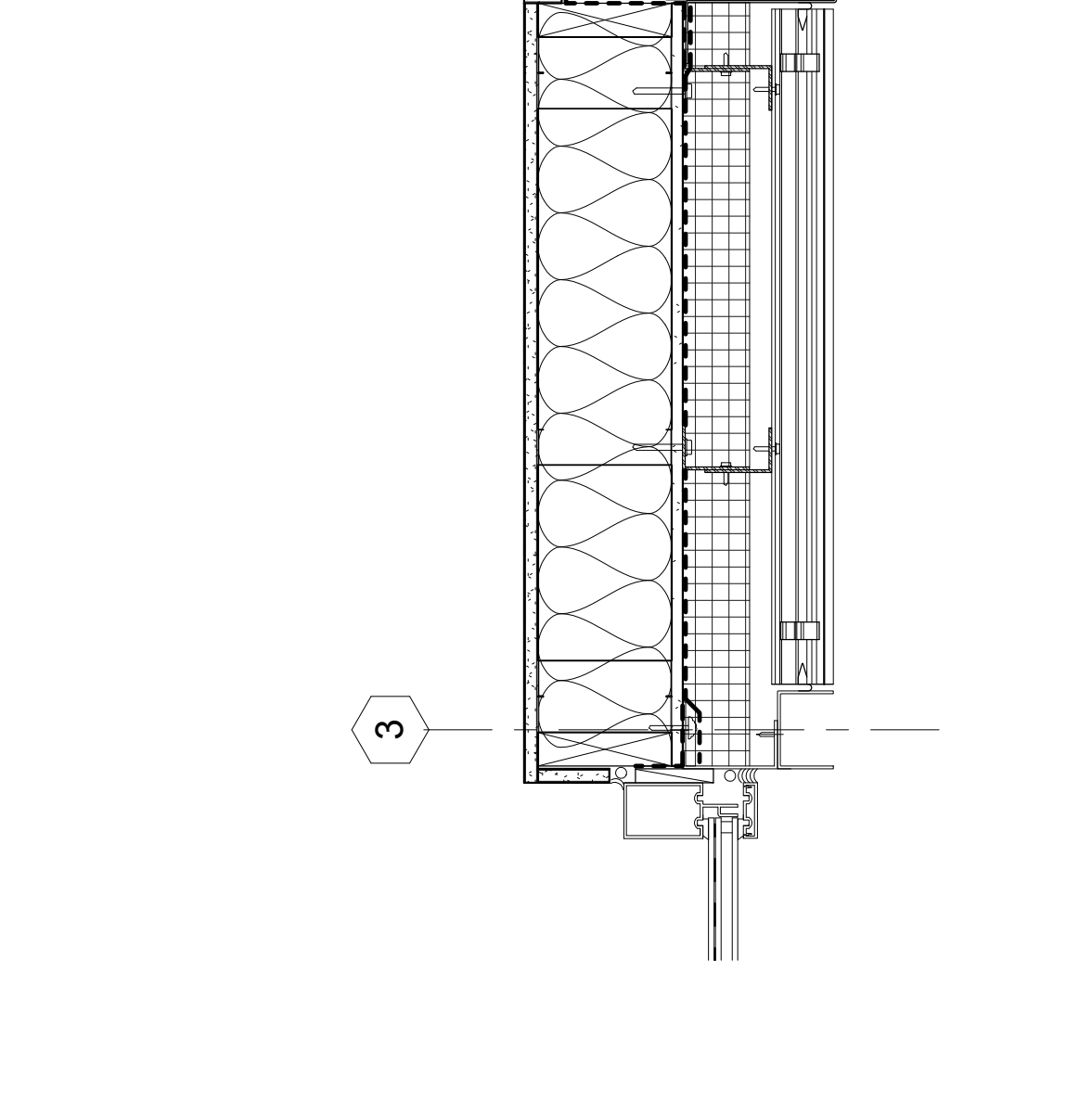
**18** A5-30/18 - PLAN DETAIL  
A5-30 1 1/2" = 1'-0"



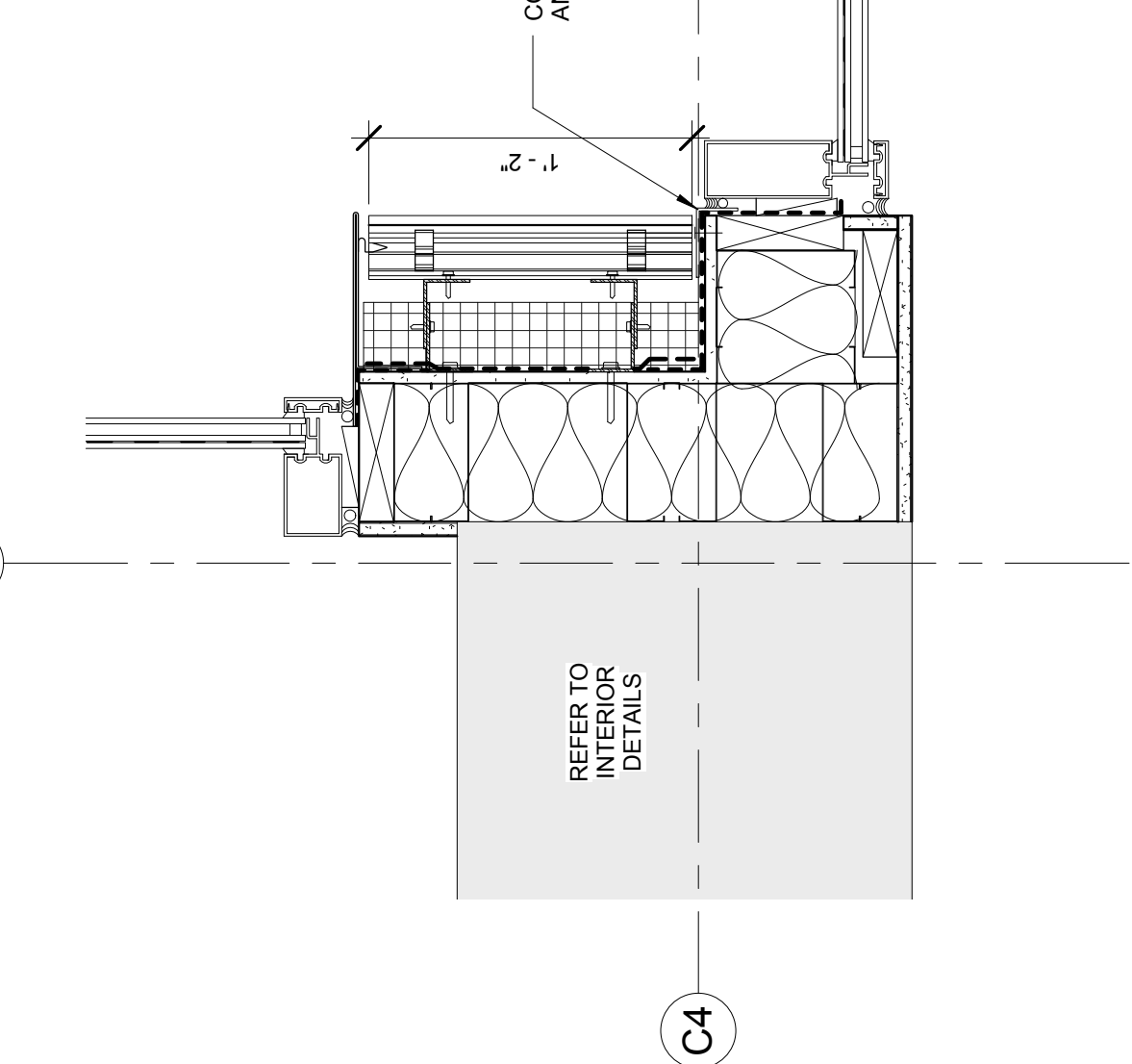
**19** A5-30/19 - PLAN DETAIL - 100 LEVEL  
A5-30 1 1/2" = 1'-0"



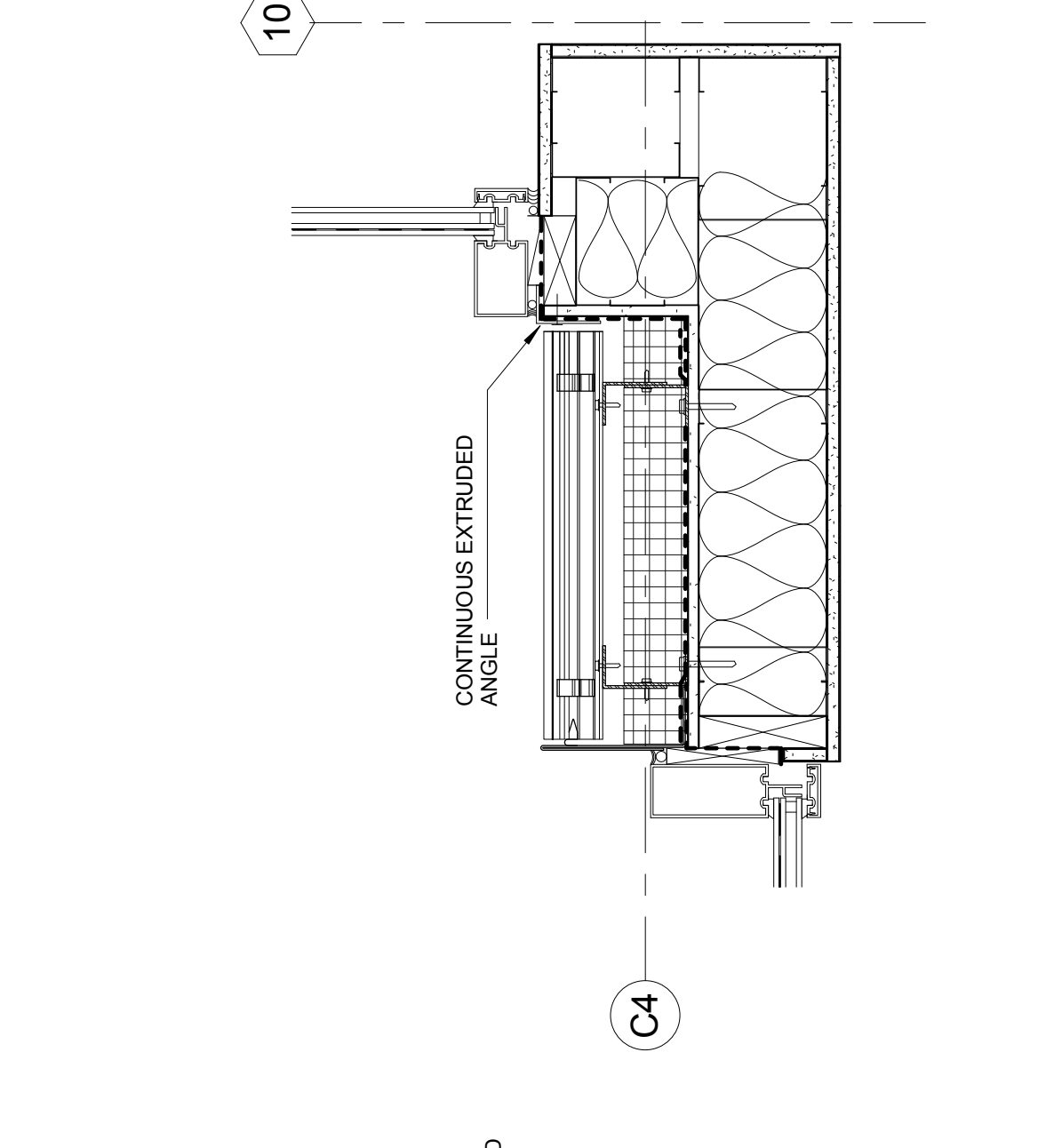
**20** A5-30/20 - PLAN DETAIL  
A5-30 1 1/2" = 1'-0"



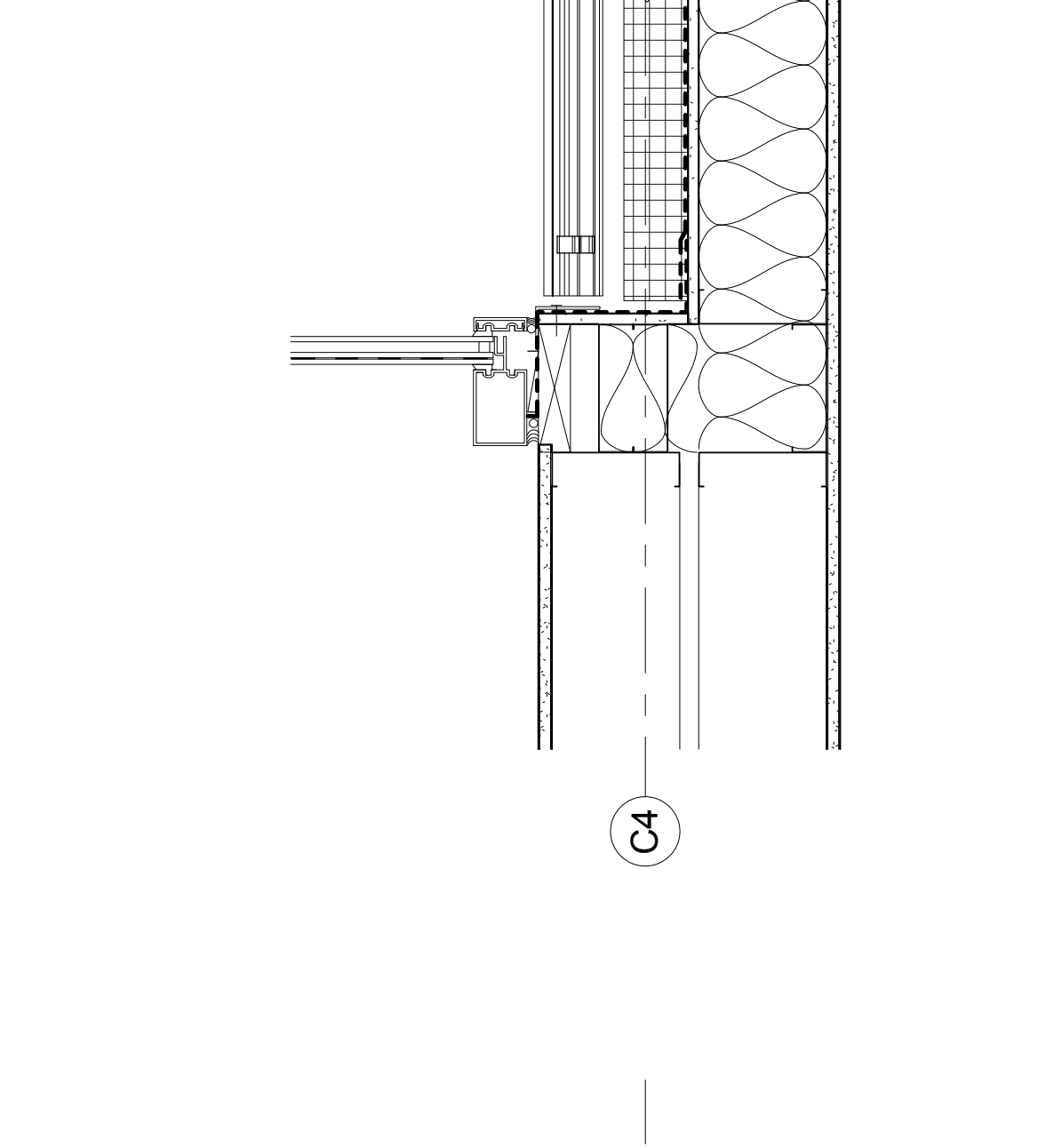
**21** A5-30/21 - PLAN DETAIL  
A5-30 1 1/2" = 1'-0"



**22** A5-30/22 - PLAN DETAIL  
A5-30 1 1/2" = 1'-0"



**23** A5-30/23 - PLAN DETAIL  
A5-30 1 1/2" = 1'-0"



**24** A5-30/24 - PLAN DETAIL  
A5-30 1 1/2" = 1'-0"

SIMILAR TO 2/A5-30?

| No. | Date       | Issue             | No. | Date | Issue |
|-----|------------|-------------------|-----|------|-------|
| 1   | 12.23.10   | SD PRICING SET    |     |      |       |
| 2   | 01.18.11   | 100% SD SET       |     |      |       |
| 3   | 05.18.2011 | LNO Meeting       |     |      |       |
| 4   | 09.15.2011 | 100% DD / PRICING |     |      |       |

Holland & Root, Holly & Smith LLC are hereby excused any errors, omissions and notes. Any authorization must be in writing. The user of these drawings is responsible for the accuracy and completeness of the information provided. The user and contractor assume responsibility for use of incorrect data. Drawings are not to be used for construction. All rights reserved.

**HOLLIBIRD & ROOT**  
30 South Dearborn Avenue  
Chicago, IL 60660  
312.327.1771 (tel)  
312.327.1699 (fax)  
www.hollibird.com

**HOLLY & SMITH LLC**  
2302 Regency Row  
New Orleans, LA 70130  
985.345.5210 (tel)  
985.345.5210 (fax)  
www.hollysmith.com

Project Number 15248.00  
Author NDF  
Checked NDF  
Proj. Arch. Eng. Approver

**LOYOLA UNIVERSITY NEW ORLEANS**  
**MONROE HALL RENOVATION**  
Project Name  
Sheet Name  
Drawing No. **A5**