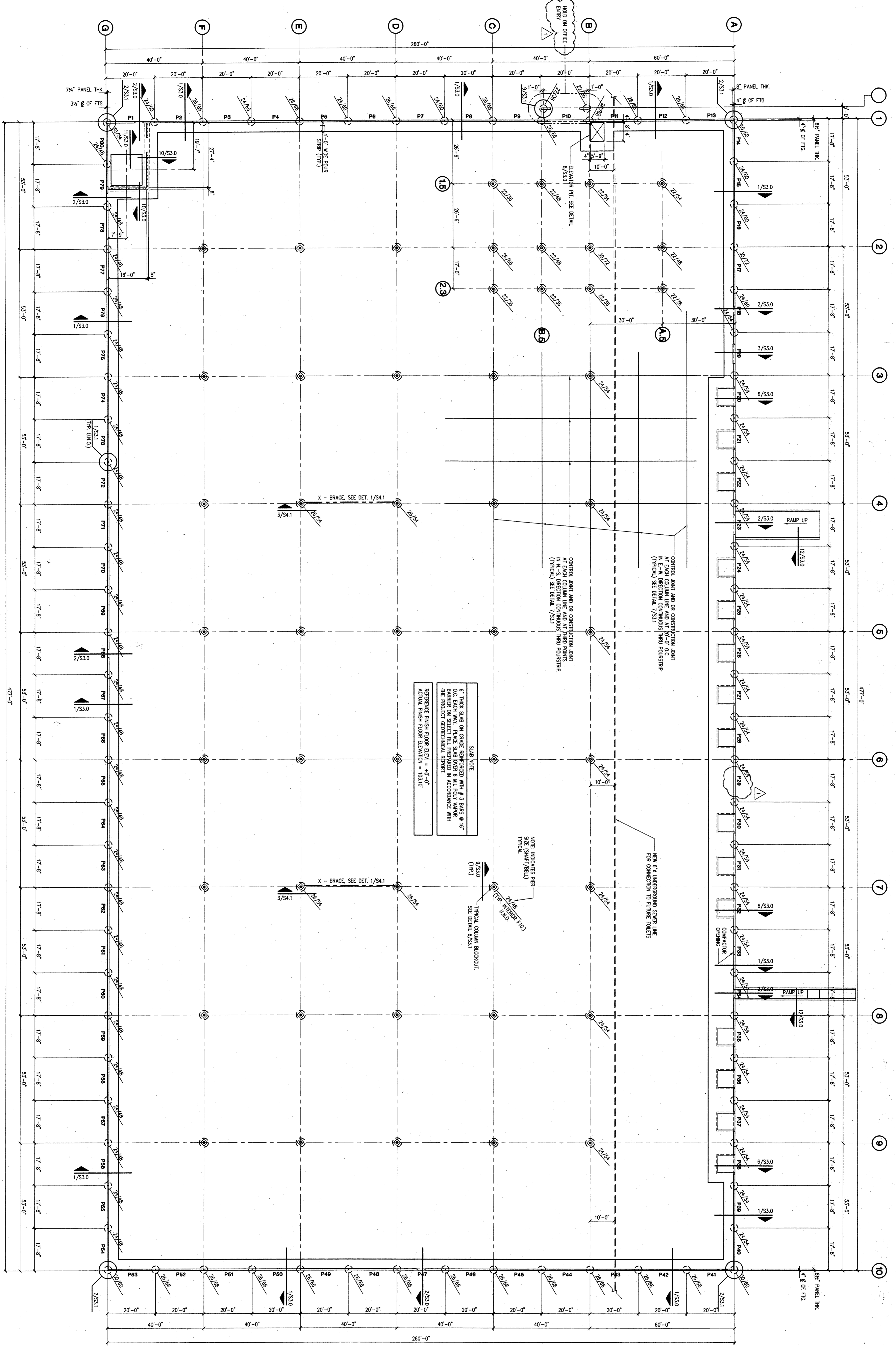


**FOUNDATION PLAN**  
 SCALE: 1/16" = 1'-0"

NOTE: WAREHOUSE FLOOR SLAB SHALL BE FINISHED SPECIFICATION FINISH. FINISH THICKNESS AND LEADERS F.L. = 23'



SAB NOTE:  
 1. THIS SLAB ON GRADE IS REINFORCED WITH 1.3 SIZES OF 18" O.C. BARS WITH 1.3 SIZES OF 18" BARS ON SELECT FIL PREPARED IN ACCORDANCE WITH THE PROJECT GEOTECHNICAL REPORT.  
 2. REFER TO FINISH FLOOR ELEVATION = 42.00'  
 3. ACTUAL FINISH FLOOR ELEVATION = 42.00'

NOTE: INDICATES PERMITS TO BE OBTAINED FOR CONSTRUCTION OF THIS TYPICAL

NEW 6" WAREHOUSE SEWER LINE FOR CONNECTION TO EXISTING TOILETS

CONTROL JOINT AND OR CONSTRUCTION JOINT AT EACH COLUMN LINE AND AT HARD POINTS IN E-W DIRECTION. CONTINUOUS THRU POUNDRS (TYPICAL) SEE DETAIL 7/S3.1

CONTROL JOINT AND OR CONSTRUCTION JOINT AT EACH COLUMN LINE AND AT HARD POINTS IN N-S DIRECTION. CONTINUOUS THRU POUNDRS (TYPICAL) SEE DETAIL 7/S3.1



HAHNES  
 Structural Engineering  
 811 Rock Street  
 Suite 101  
 Houston, Texas 77002  
 713-227-4811  
 713-227-4812 fax

Owens & Minor Medical, Inc.

HRM# 95079  
 Issues / Revisions  
 FOUNDATION PERMIT 22 January 1996  
 ISSUE FOR PERMIT 20 February 1996  
 REVISIONS 14 March 1996

House Reh Burwell Architects