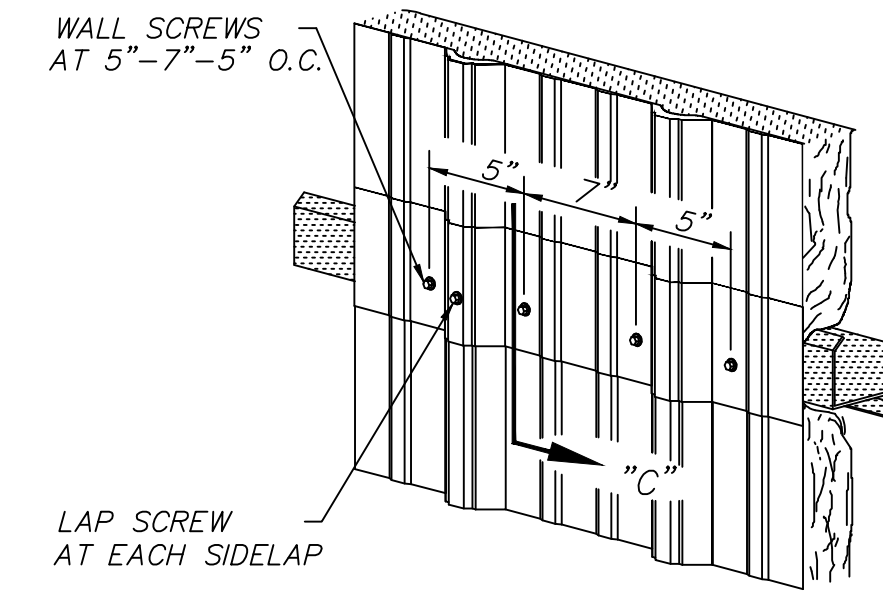
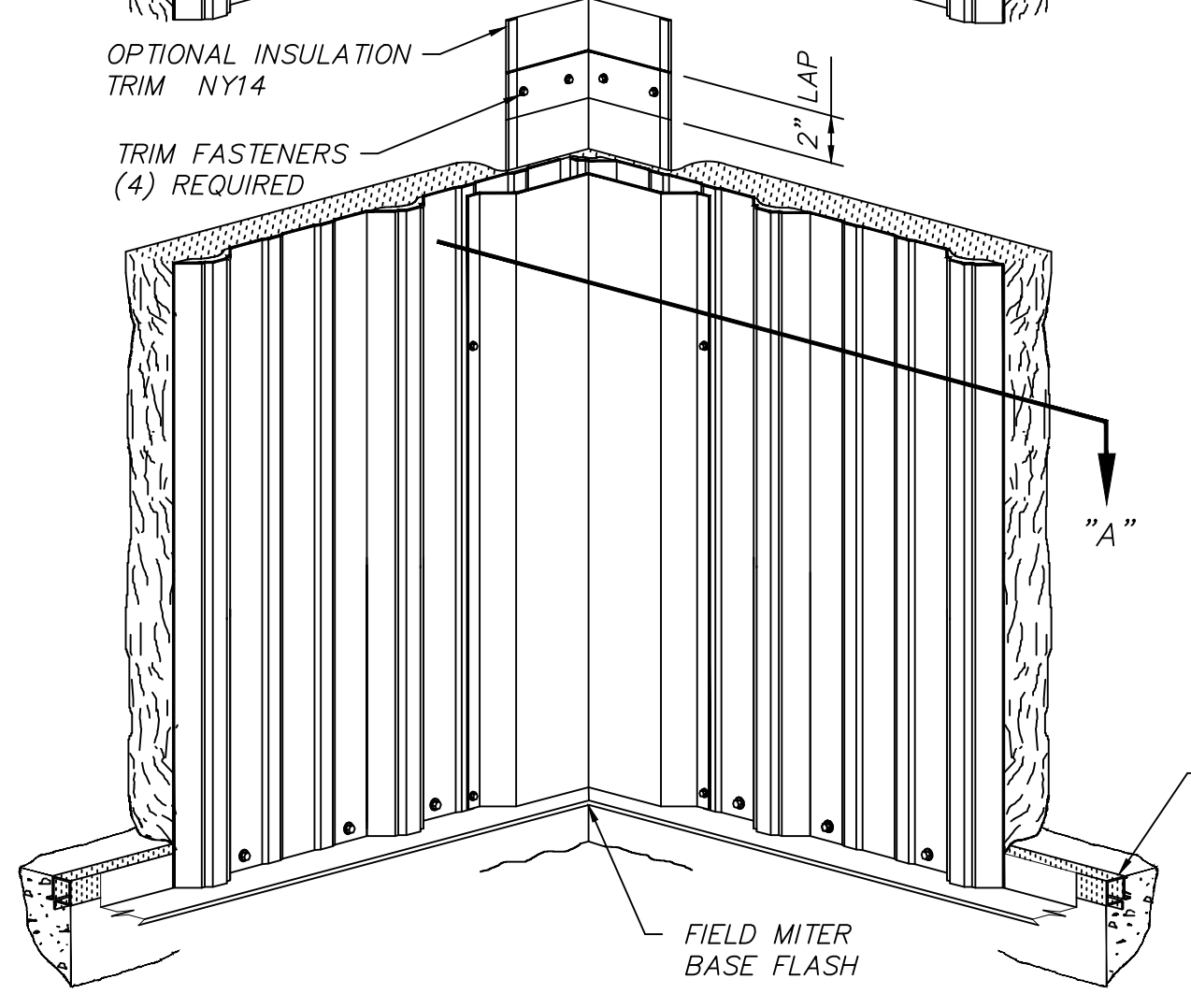
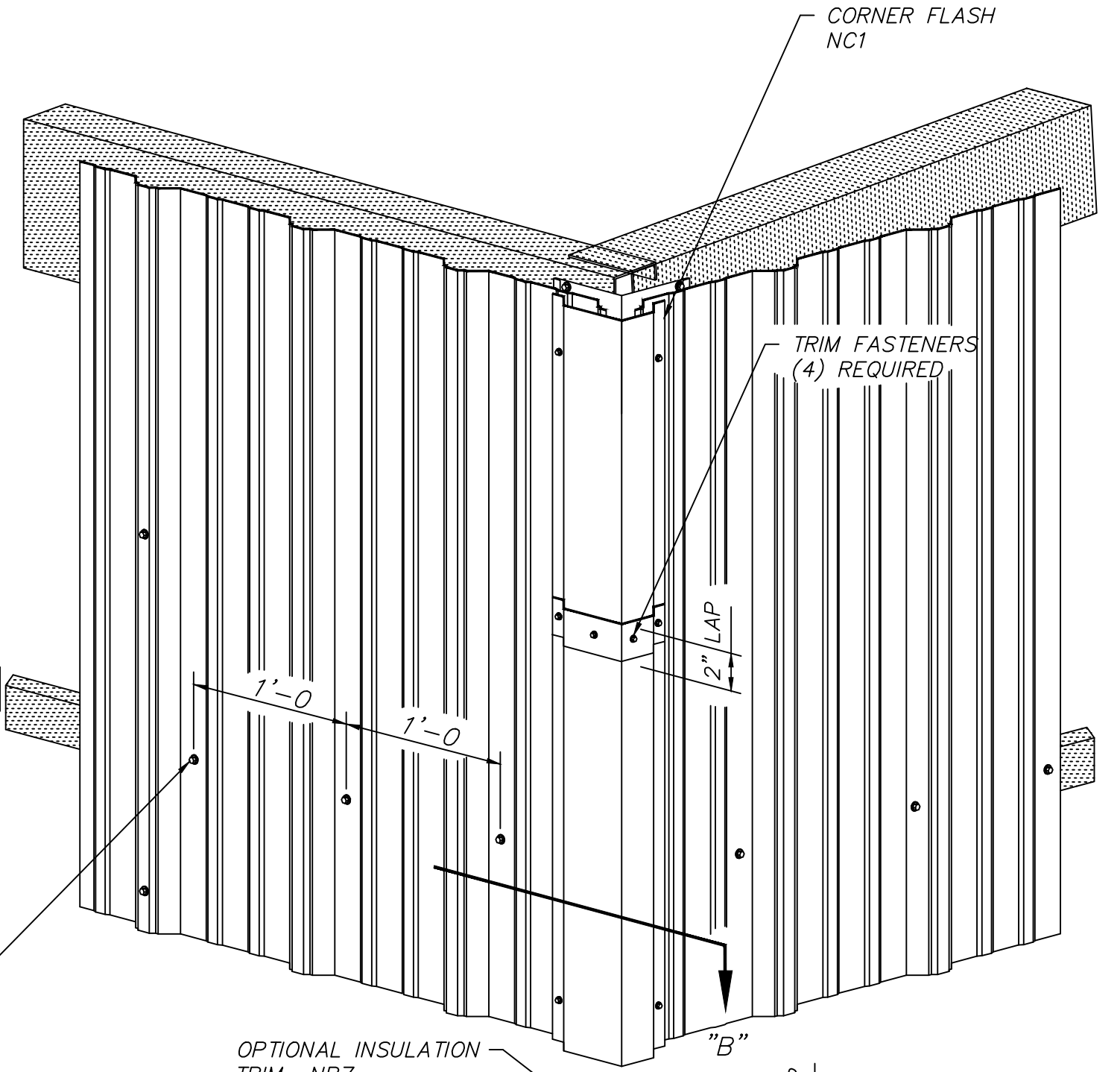


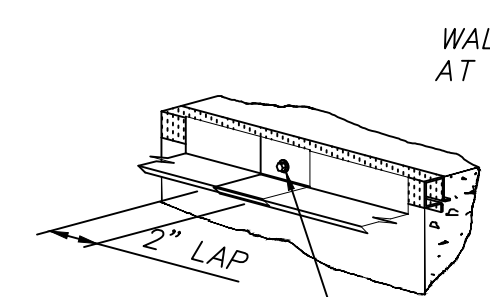
REFER TO ROOF PANEL CONSTRUCTION DRAWINGS FOR SECTIONS AND SCREW PLACEMENT AT EAVE AND GABLE.



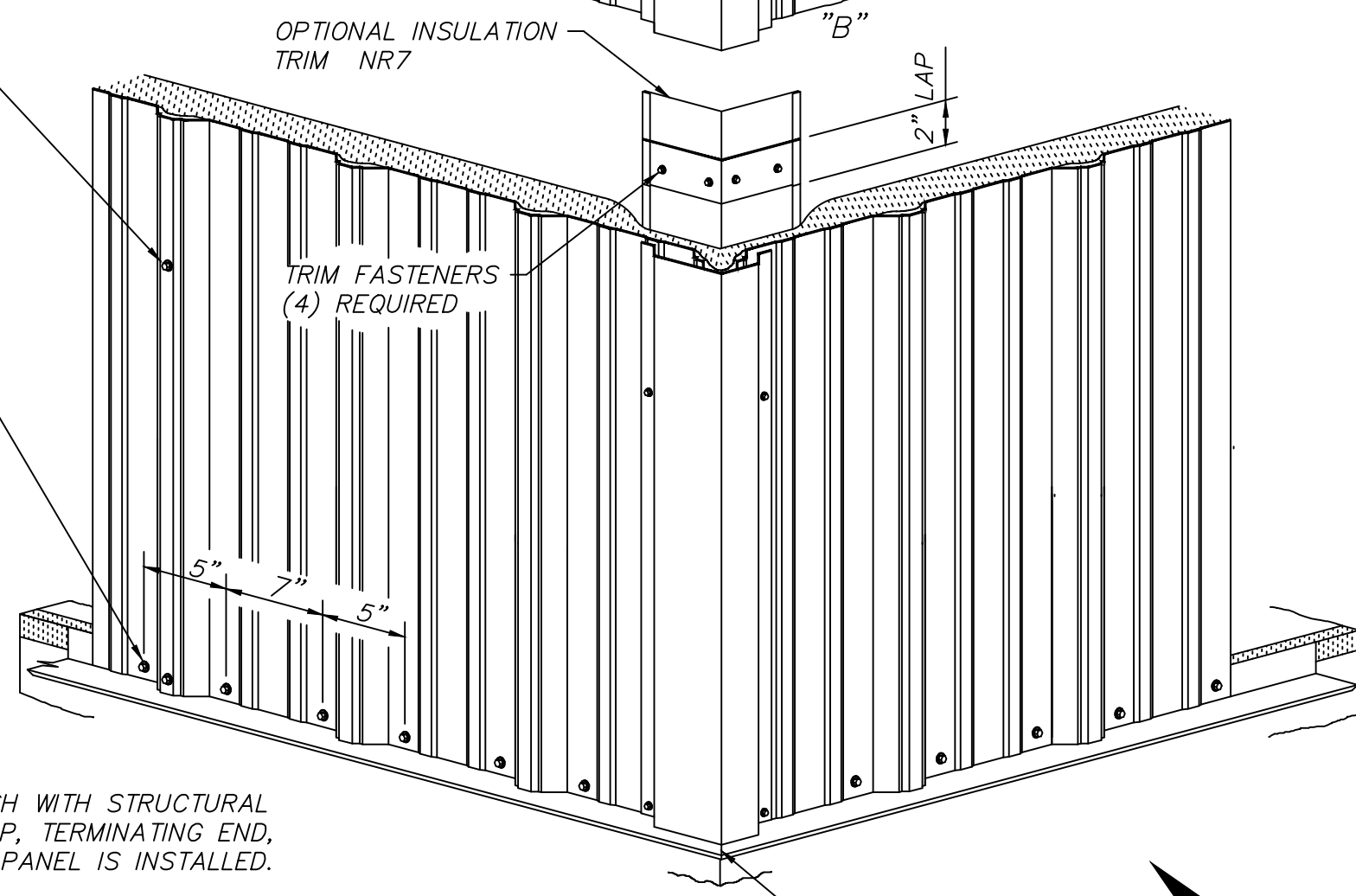
WALL PANEL ENDLAP
(REFER TO ERECTION DRAWINGS)



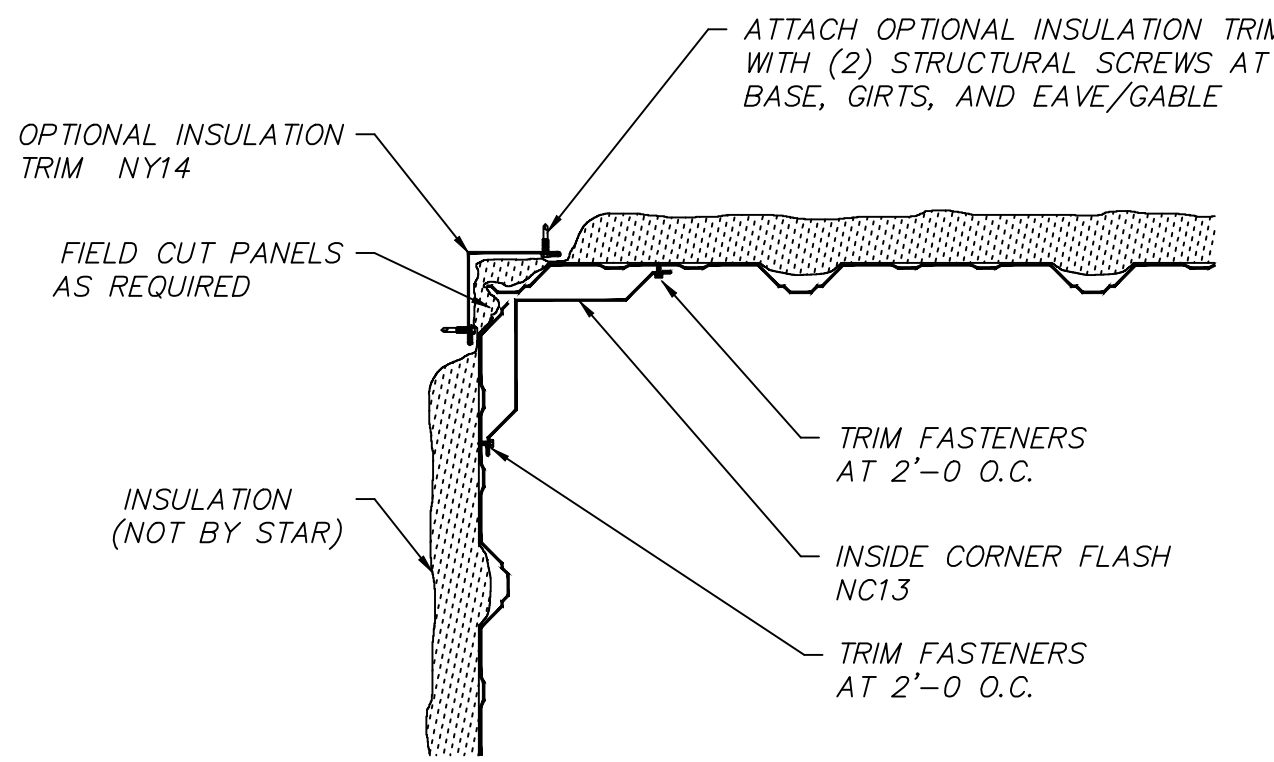
FIELD MITER BASE FLASH



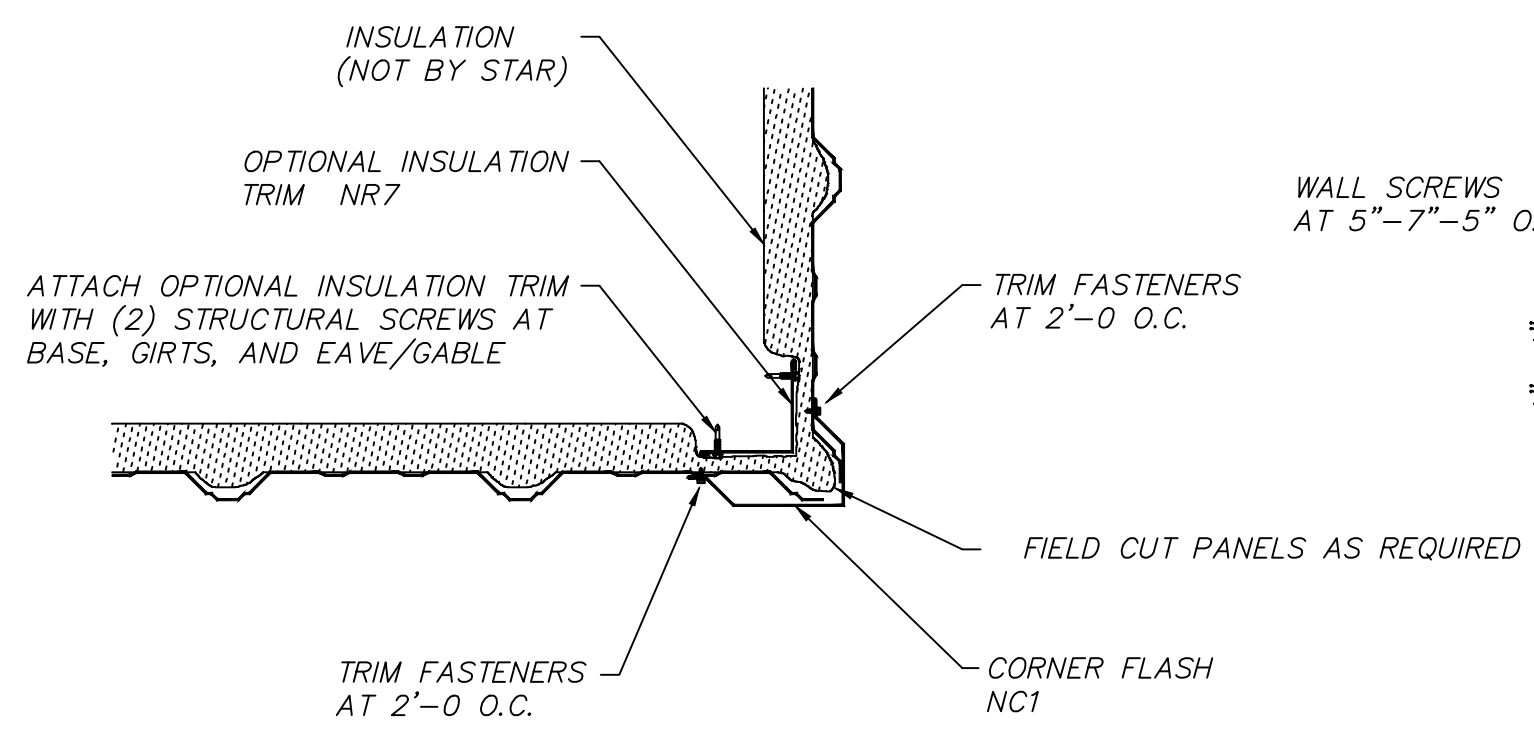
WALL SCREWS AT 5'-7"-5" O.C.



FIELD MITER BASE FLASH

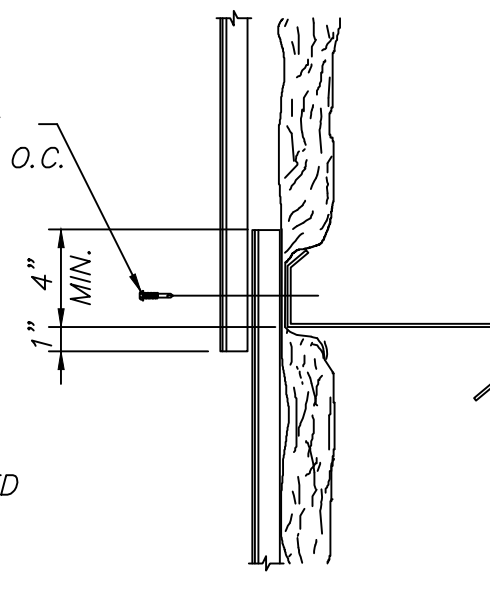


SECTION 'A'

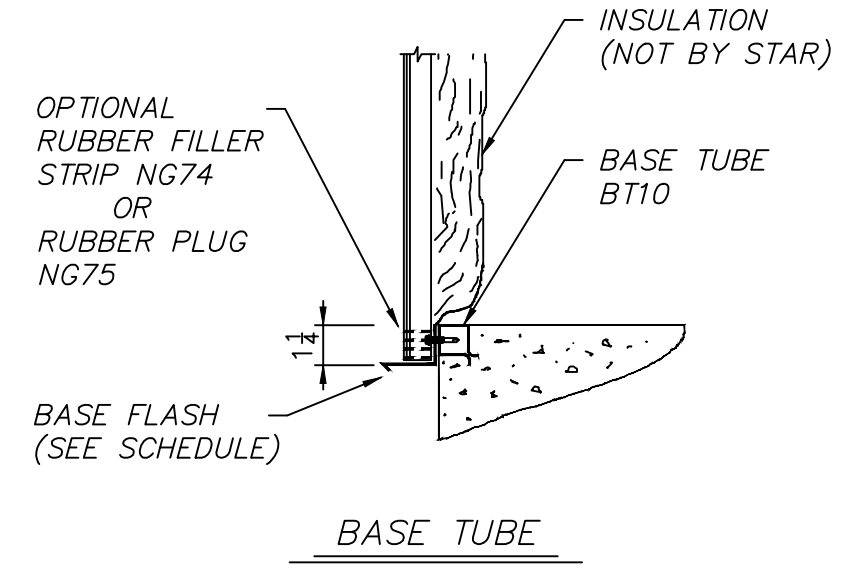


SECTION 'B'

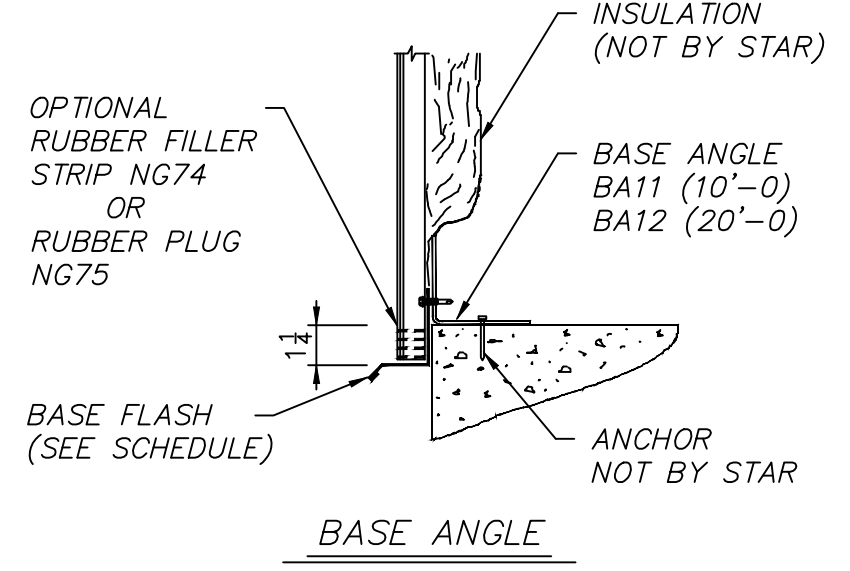
WALL SCREWS AT 5'-7"-5" O.C.



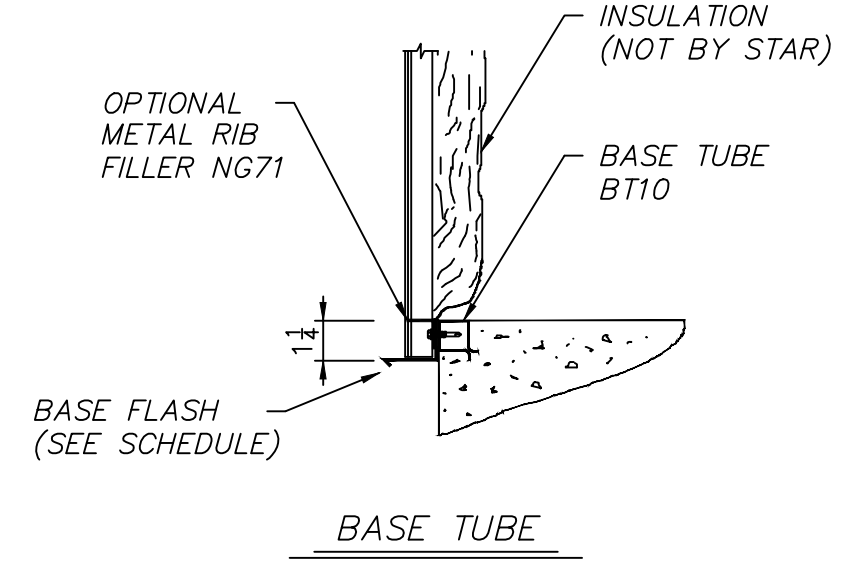
SECTION 'C'



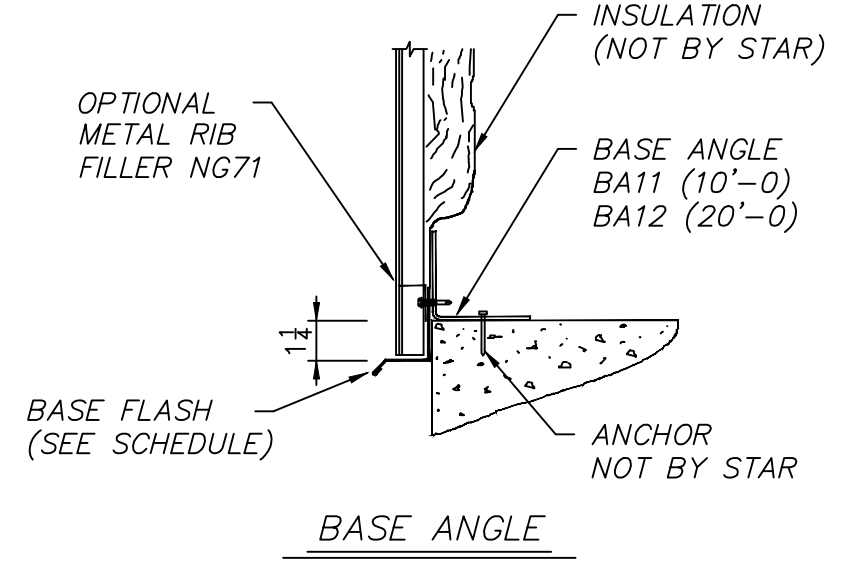
BASE TUBE



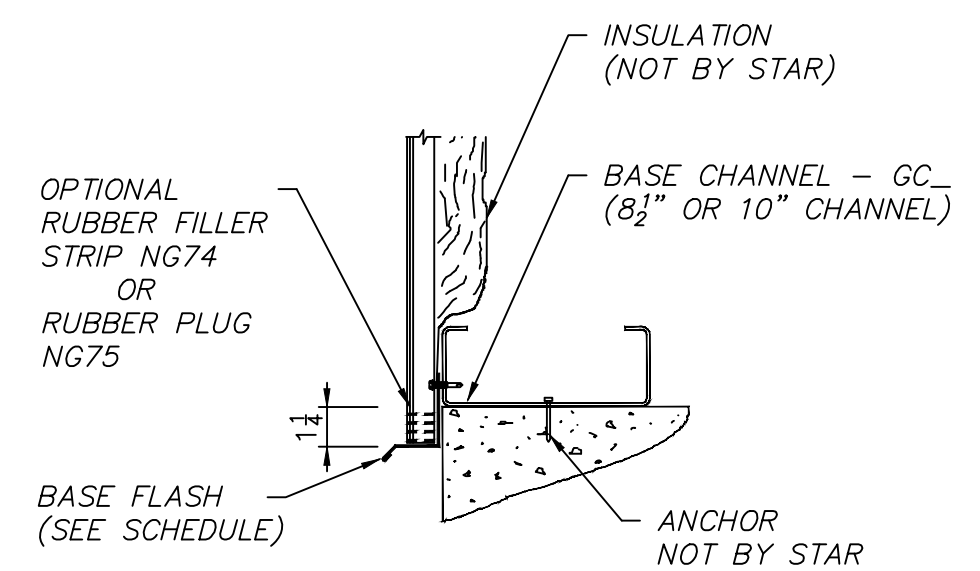
BASE ANGLE



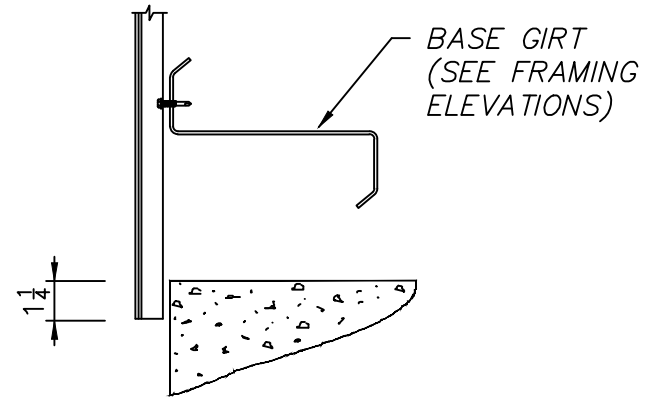
BASE TUBE



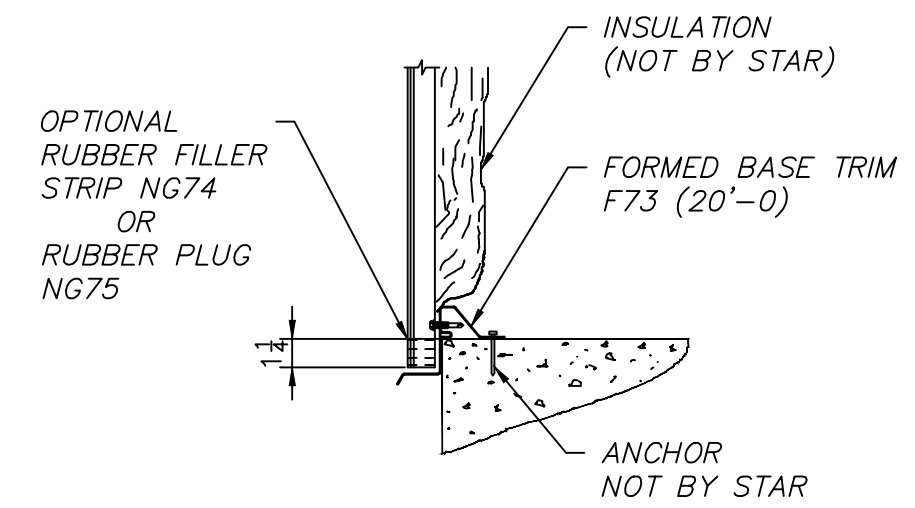
BASE ANGLE



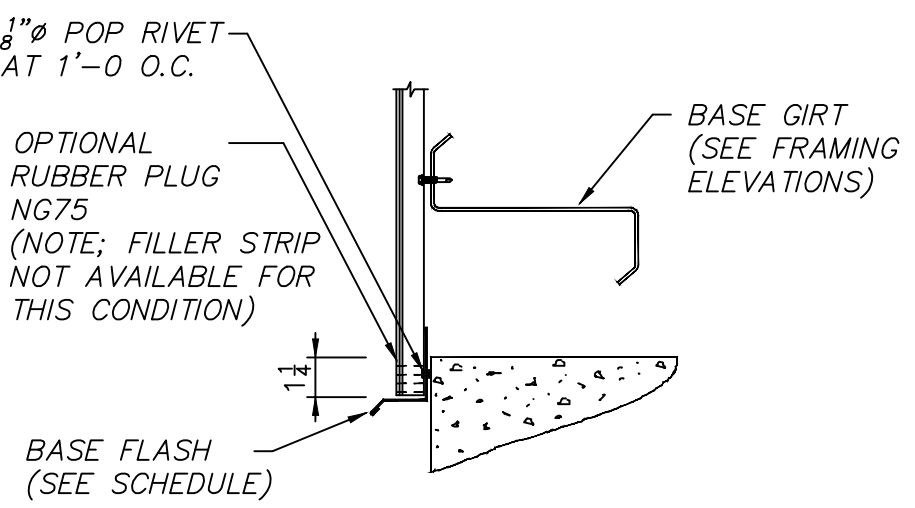
BASE CHANNEL



BASE GIRT



FORMED BASE TRIM



BASE GIRT

BASE FLASH	
NB1	
NB2	
NB3	
NB4	
NB5	

NOTES:

- SIDEWALL PANEL LENGTH IS EQUAL TO NOMINAL EAVE HEIGHT MINUS 1/2"
- ALL BASE FLASH, RUBBER, FOAM OR METAL RIB FILLERS ARE OPTIONAL ITEMS AND MAY OR MAY NOT BE ON JOB FOR INSTALLATION.
- STAR TRIM PARTS ARE PROVIDED IN STANDARD LENGTHS AND MAY REQUIRE FIELD CUTTING TO LENGTH. (NOTE! REMAINDER MAY BE REQUIRED AT A DIFFERENT LOCATION.)

Revision	Date	Description

STAR BUILDING SYSTEMS
An NGI Company

P.O. BOX 94910
OKLAHOMA CITY, OK 73143
(405) 656-2010

Project Name & Location:
PINNACLE CASINO -
MANHATTAN CONSTRUCTION
BATON ROUGE, LA

Customer:
CASEY CIVIL LLC
COMMERCIAL
MANDEVILLE, LA

Drawing Status:
 Preliminary
 For Approval
 For Construction Permit
 For Erector Installation

Scale: NOT TO SCALE

Drawn by:

Checked by:

Project Engineer:

Job Number: 12-B-63841

Sheet Number: R3 of 10

The engineer whose seal appears hereon is an employee for the manufacturer for the materials described herein. Said seal or certification is limited to the products designed and manufactured by manufacturer only. The undersigned engineer is not the overall engineer of record for this project.