

DAMMON
ENGINEERING, INC.

CHIEF ENGINEER
EMMETT
DAMMON, P.E.

CHIEF ARCHITECT
ROBERT
WILTSE

554 OLD SPANISH TRAIL
SLIDELL, LA. 70456
OFFICE: 985-649-5632
FAX: 985-641-5950

WEBSITE:
WWW.DAMMONENGINEERING.COM
EMAIL:
DAMMONENG@BELL.SOUTH.NET

ARCHITECTURE
ENGINEERING
STUDIES
PLANNING
INVESTIGATION
EXPERT WITNESSES

2209 LAPALCO
BLVD.
HARVEY, LA.

REV:

SCALE: AS NOTED

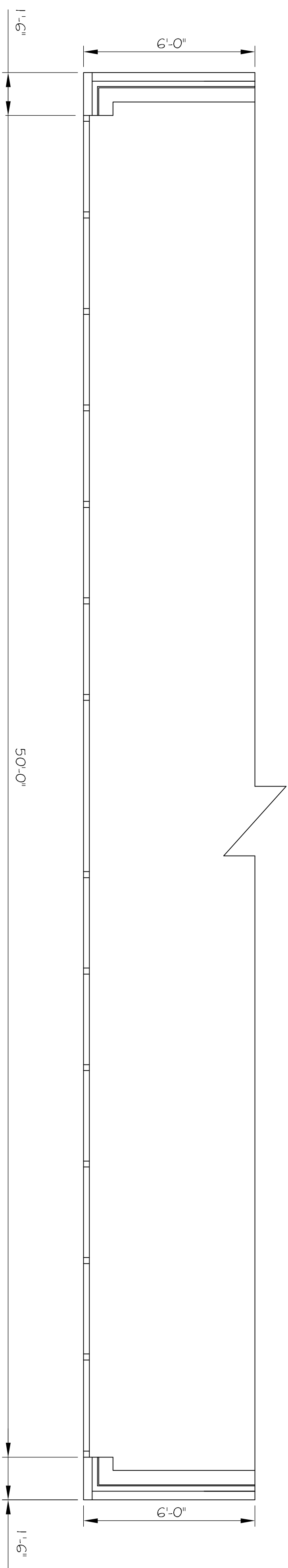
JOB#:

DATE: 12-14-11

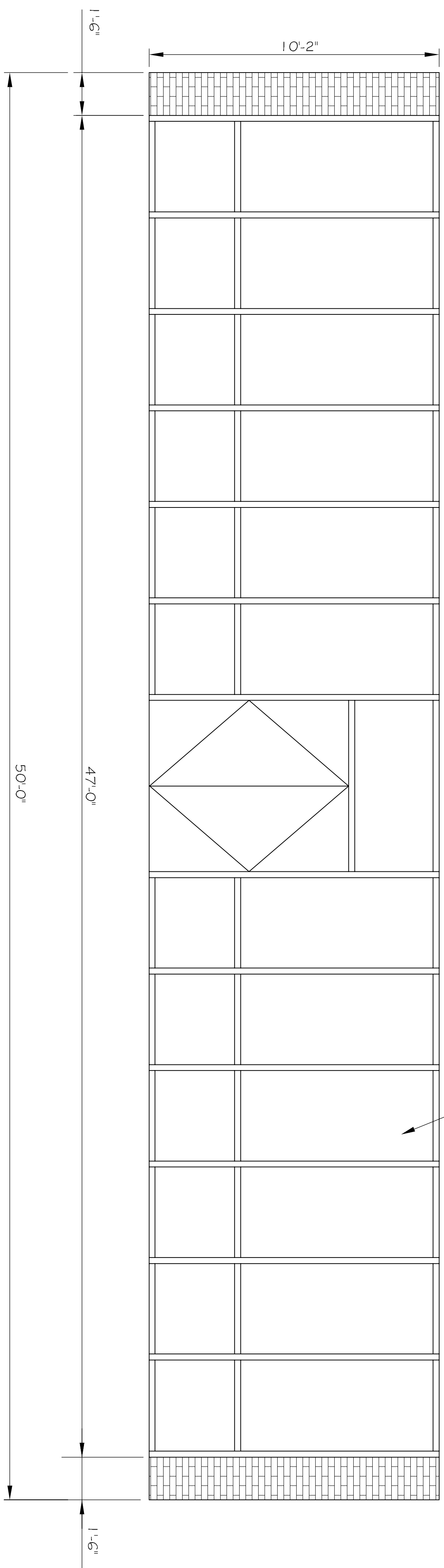
SHEET 1

A-1

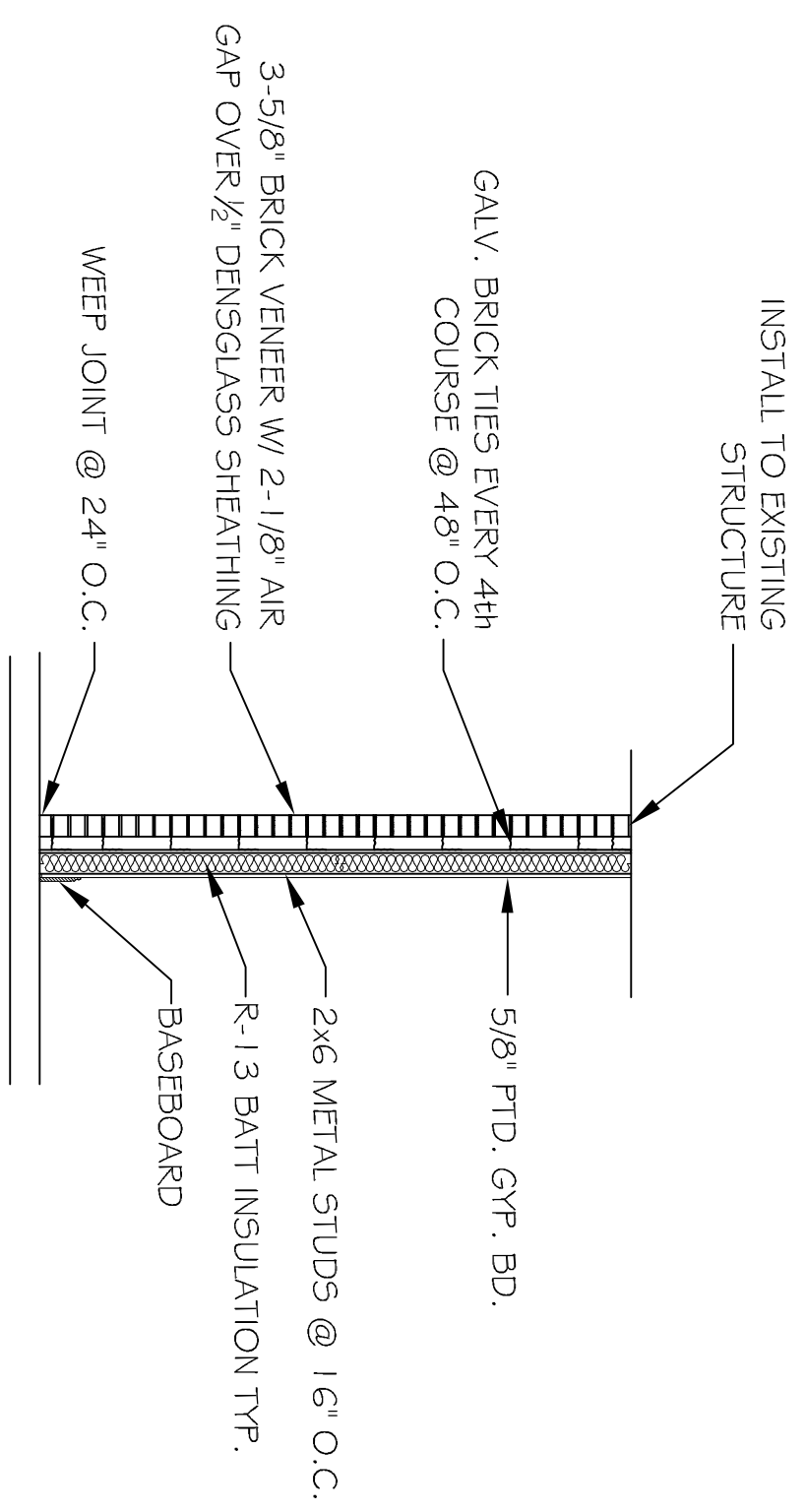
OF 1



PLAN VIEW
SCALE: 3/8" = 1'



PARTIAL FRONT VIEW
SCALE: 3/8" = 1'



TYPICAL WALL SECTION
SCALE: 3/8" = 1'

1609.1.2 Protection of openings. In wind-borne debris regions, glazing in buildings shall be impact resistant or protected with an impact-resistant covering meeting the requirements of an approved impact-resistant standard or ASTM E 1996 and ASTM E 1886 referenced herein as follows:

1. Glazed openings located within 30 feet (9 144 mm) of grade shall meet the requirements of the large missile test of ASTM E 1996.
2. Glazed openings located more than 30 feet (9 144 mm) above grade shall meet the provisions of the small missile test of ASTM E 1996.