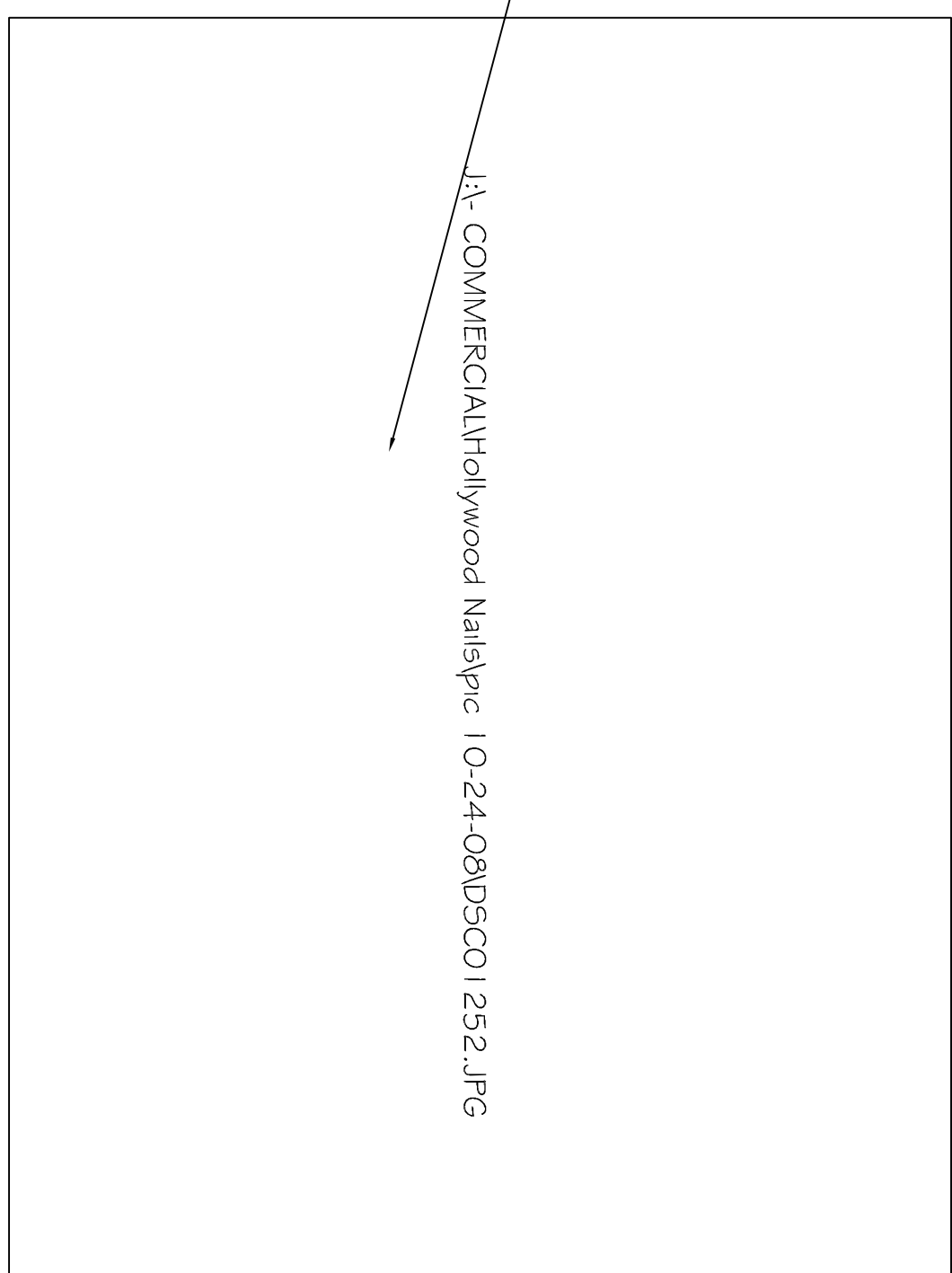


EXHAUST ROOF (3)
TO OUTSIDE OF PARALLEL WALL

PROVIDE MINIMUM 10" SEPARATION FROM ALL FRESH AIR INTAKE @ ADJACENT SUITES. FIELD VERIFY.



PICTURE OF EXISTING DISCONNECT AND WHIPS

HOLLYWOOD NAILS HVAC CALCULATIONS

MON OCT 27 13:57:55 EDT 2008

THE BTUH GAIN FOR 184.5 SQFT OF SOUTHEAST AND SOUTHWEST DOUBLE PANE GLASS = 18450

THE BTUH GAIN FOR 410 SQFT OF WOOD R-13 @ 1/2" Gypsum WALL NUMBER 1 = 943

THE BTUH GAIN FOR 1066 SQFT OF ROOF ONLY 8" - 9.5" R-30; CEILING NUMBER 1 = 34111.2

THE BTUH GAIN FOR 23.5 PEOPLE = 235

THE BTUH GAIN FOR 1066 SQFT OF AREA LIGHTING IN AN NAIL SALON = 3199

THE NAIL SALON SPACE OUTSIDE FRESH AIR = 590 CFM

THE BTUH GAIN FOR OUTSIDE FRESH AIR = 17700

THE TOTAL OUTSIDE FRESH AIR CFM = 590

THIS IS IN ACCORDANCE WITH INTERNATIONAL MECHANICAL CODE 2003, TABLE 403.3

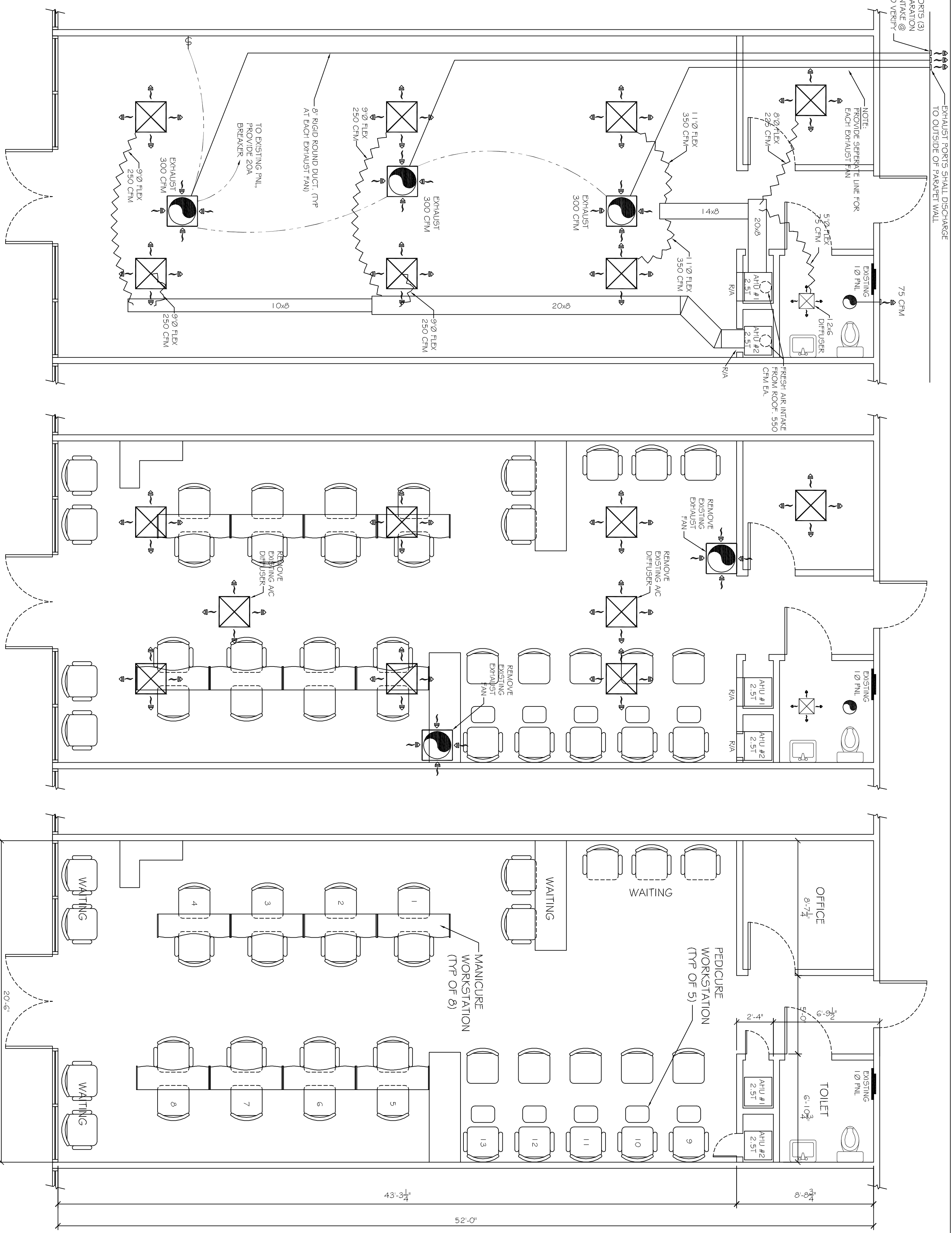
THE TOTAL BTUH GAIN = 40337.2

THE TOTAL TONS OF HVAC NEEDED = 3.661417

- CONTRACTOR NOTES:**
1. PROVIDE SWITCH TO ACTIVATE NEW EXHAUST FANS. HVAC BLOWER MOTORS MUST ENGAGE WHEN EXHAUST FANS ARE RUNNING TO ENSURE PROPER AIR CIRCULATION AND VENTILATION.
 2. NEW EXHAUST FANS AND PARTS OF EXHAUST SYSTEM IN CONTACT WITH EXPLOSIVE OR FLAMMABLE VAPORS, FUMES, OR DUSTS SHALL BE OF NONFERROUS OR NONSPARKING MATERIALS, OR THEIR CASING SHALL BE LINED OR CONSTRUCTED OF SUCH MATERIAL IN ACCORDANCE WITH IMC 2006, SEC 503.2
 3. FIELD VERIFY ALL PARTITION WALLS ARE CONSTRUCTED TIGHT TO ROOF DECK AND SEALED WITH AN APPROVED FIRE CALK.

MECHANICAL NOTES

1. CONCEALED DUCTWORK TO BE UL-181, CLASS 1, FIBERGLASS DUCTBOARD. DUCTS SHALL BE SIZED TO LIMIT MAIN DUCTS TO 1000 CFM & SECONDARY DUCTS TO 800 CFM. TO BE INSTALLED PER SMACNA STANDARDS.
2. EXPOSED DUCTWORK TO BE GALVANIZED SHEET METAL PER SMACNA STANDARDS. LINE WITH NEOPRENE COATED 1.0" x 1.5 POUNDS PER CUBIC FOOT DUCT INSULATION.
3. ROUND FLEXIBLE DUCT TO BE UL-181, CLASS 1, AIR DUCT MATERIALS.
4. DUCT SIZES SHOWN ARE CLEAR INSIDE DIMENSIONS.
5. IN ALL SYSTEMS OVER 2000 CFM AND LESS THAN 15,000 CFM, SMOKE DETECTORS SHALL BE INSTALLED IN ACCORDANCE WITH NFPA 72E IN THE RETURN DUCT DOWNSTREAM OF THE AIR HANDLING UNIT AND ALL FILTERS TO AUTOMATICALLY STOP THE FAN.
6. PROVIDE U.L. LISTED 1.25" FIP PRESTAT IN RETURN AIR OF EACH SYSTEM UNDER 2000 CFM TO SHUT DOWN THE FAN IN THE EVENT OF FIRE.
7. PROVIDE U.L. RATED FIRE DAMPERS WHERE REQUIRED AT ALL DUCT PENETRATIONS OF FIRE-RATED ASSEMBLIES AND WHERE REQUIRED BY CODE, INCLUDING OUTSIDE AIR INTAKES.
8. CONDENSATE DRAINS TO BE PVC PIPE RUN TO PLUMBERS P-TRAP WITHIN FIVE FEET OF AIR HANDLING UNITS.
9. ALL AIR HANDLING SYSTEMS TO BE BALANCED TO ASSURE PROPER AIR FLOWS PER PLANS.
10. ALL THERMOSTATS TO BE AUTOMATIC CHANGEOVER WITH HEAT SWITCH.
11. EXHAUST FAN EQUAL TO BROAD MODEL NO. L300 SERIES OR EQUAL. FAN SHALL BE CONTROLLED BY A SWITCH ON THE WALL AT FRONT OF STORE. PROVIDE BACK DRAFT DAMPER.
12. PROVIDE AND INSTALL WATER PROOF GRILLE VENT IN PROPER ROOF LOCATION FOR PLUMBING FIXTURE EXHAUST.
13. ALL SUPPLY AIR VENTS SHALL BE EQUIPPED WITH AIR CONTROL DAMPERS.
14. LOCATE OUTDOOR UNITS AS SHOWN ON ARCH. DWGS.
15. REFRIGERANT LINES SHALL BE SIZED BY UNIT MANUFACTURER AND INSTALLED ACCORDING TO MANUFACTURER'S INSTRUCTIONS.
16. FRESH AIR SHALL BE SUPPLIED TO EACH AIR HANDLER THROUGH EXTERIOR WALL DUCT SUPPLIED WITH A CONTROL DAMPER.
17. INSTALL FIRE DAMPER WHERE S.A. & R.A. DUCTS PENETRATE 1 HOUR RATED CEILINGS.
18. ALL ELECTRICAL, MECHANICAL, AND PLUMBING PENETRATING FIRE WALLS SHALL BE FIRE CAULKED. PENETRATIONS THROUGH RATED CONSTRUCTION SHALL BE SEALED WITH A MATERIAL CAPABLE OF PREVENTING THE PASSAGE OF FLAMES AND HOT GASES WHEN TESTED IN ACCORDANCE WITH ASTM-E814.
19. MECHANICAL PLANS ARE DRAWN SCHEMATICALLY. CONTRACTOR TO ROUTE DUCT SYSTEMS PER FIELD CONDITIONS.
20. AREA OF REFUGE SHALL BE DESIGNED IN ACCORDANCE WITH NFPA 92A. TO INCLUDE STAIRWELL PRESSURIZATION SYSTEMS, PROVIDE PROPER ACTIVATION AND CONTROL SYSTEMS.



MECHANICAL / ELECTRICAL PLAN
SCALE: 1/4" = 1'-0"

DEMOLITION PLAN
SCALE: 1/4" = 1'-0"

FLOOR PLAN
SCALE: 1/4" = 1'-0"

LEGEND

- INDICATES NEW PRE-INSULATED FLEXIBLE DUCT SIZE PER PLAN MAX LENGTH 14'-0"
- INDICATES NEW SHEET METAL DUCTWORK. SIZES SPECIFICATIONS FOR TYPE OF INSULATION.
- INDICATES NEW CEILING DIFFUSER. CFM AS NOTED - 24 x 24 UNLESS OTHERWISE NOTED.
- EXHAUST FAN
- AC UNIT

FRESH AIR REQUIREMENTS PER IMC 2003, TABLE 403.3

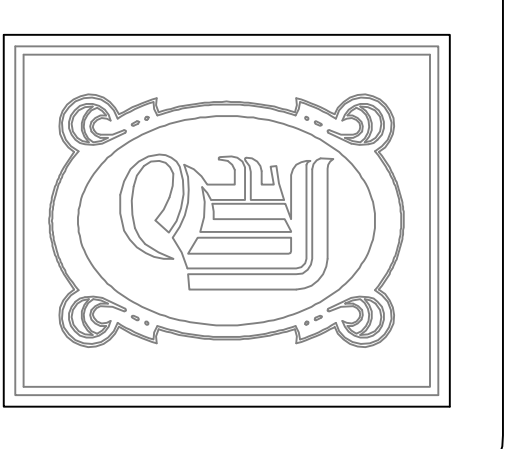
ROOM NAME	SQUARE FEET	CFM O.A.	AC ZONE	TOTAL REQ. O.A.
NAIL SALON	1100	1100	1	1100
TOTAL 1100s.f.				

A/C UNIT SCHEDULE

NO.	TOTAL BTU	CFM	O.A.	ELECTRICAL		COMMENTS
				HEAT (KW)	VOLTAGE	
1	30,000	1000	550	10	240V, 1Ø	18.7
2	30,000	1000	550	10	240V, 1Ø	18.7

AIR BALANCE SCHEDULE

	AHU-1	AHU-2	EF-1	TOILET EF	COMMENTS
OUTSIDE AIR FLOW (CFM)	550	550			
RETURN AIR FLOW (CFM)	450	450			
SUPPLY AIR FLOW (CFM)	1000	1000			
EXHAUST AIR FLOW (CFM)		300		75	
BUILDING PRESSURE (CFM)	+550	+550	-300	-75	
QUANTITIES	1	1	3	1	
TOTAL PRESSURIZATIONS	+550	+550	-900	-75	
REMARKS					
RESULTING BUILDING PRESSURIZATION (CFM) =	+125				



DAMMON ENGINEERING, INC.

CHIEF ENGINEER
EMMETT DAMMON, P.E.

CHIEF ARCHITECT
ROBERT WILTSE

1095 FLORIDA AVENUE
SLIDELL, LA, 70458
OFFICE: 985-649-5632
FAX: 985-641-5950

WEBSITE:
WWW.DAMMONENGINEERING.COM

EMAIL:
DAMMONENG@BELLSouth.NET

HOLLYWOOD NAILS

PAM THUY
1071 ROBERT BOULEVARD
SLIDELL, LA 70458

RENOVATION PLAN

REV: _____

SCALE: AS NOTED

JOB#: _____

DATE: 10-31-08

SHEET 1

M-1

OF 1