

RENOVATION

FOR

HYUNDAI OF SLIDELL

298 E HOWZE BEACH ROAD, SLIDELL, LA 70461

OWNER
MIKE STEDEM
HYUNDAI OF SLIDELL
 298 E HOWZE BEACH ROAD, SLIDELL, LA 70461
 (985) 261-5862

CUSTOMER FOCUSED AREAS										
SHOWROOM VEHICLES	SHOWROOM DISPLAY AREA	SALES / F&I OFFICES AREA	NVD AREA	CUSTOMER LOUNGE AREA	MANAGER OFFICE AREA	SERVICE WRITE-UP AREA	CUSTOMER RESTROOM AREA	PARTS / CASHIER AREA	TOTAL CUSTOMER FOCUSED AREA	TOTAL ADMIN OFFICE AREA
4	2193 SF	1002 SF	553 SF	244 SF	473 SF	280 SF	258 SF	915 SF	5445 SF	1475 SF

USABLE LAND - SALES PARKING									
New Vehicle Display / Storage		Used Vehicle Display / Storage		Sales Customer Parking		Employee Parking & Miscellaneous		TOTALS	
# spaces	320 sqft	# spaces	320 sqft	# spaces	300 sqft	# spaces	375 sqft	# spaces	sqft
14	4480 SF	44	14080 SF	12	3600 SF	17	6375 SF	87	28535 SF

SPACE GUIDELINES - BUILDING		
SITE PROGRAM	REQUIRED	PROPOSED
TOTAL SITE AREA	90,200 SF	110,787 SF
CUSTOMER FOCUS AREA	4,530 SF	5,445 SF
DISPLAY VEHICLES	4	4
GENERAL ADMIN	1,370 SF	1,475 SF
SERVICE DRIVE	1,800 SF	668 SF
SERVICE SHOP	4,200 SF	4,889 SF
SERVICE LIFTS	8	9
PARTS STORAGE	1,400 SF	915 SF
TOTAL BUILDING	13,300 SF	13,500 SF

SPACE GUIDELINES - USABLE LAND					
PROGRAM TYPE	REQUIRED		PROPOSED		#
	SQFT	#	SQFT	#	
SALES CUSTOMER PARKING	4,200	14	3,600	12	
SERVICE SHOP PARKING	14,400	48			
NEW VEHICLE DISPLAY	35,200	110	4,480	14	
USED VEHICLE DISPLAY	14,400	45	14,080	44	
EMPLOYEE PARKING AND MISCELLANEOUS	13,500	36	6,375	17	

CONSTRUCTION DOCUMENT

ISSUE	DATE

A RENOVATION FOR
 HYUNDAI OF SLIDELL

298 EAST HOWZE ROAD
 SLIDELL, LA 70461

75% of Submittal

Date
 31 JANUARY 2022

COVER SHEET

Job No. #

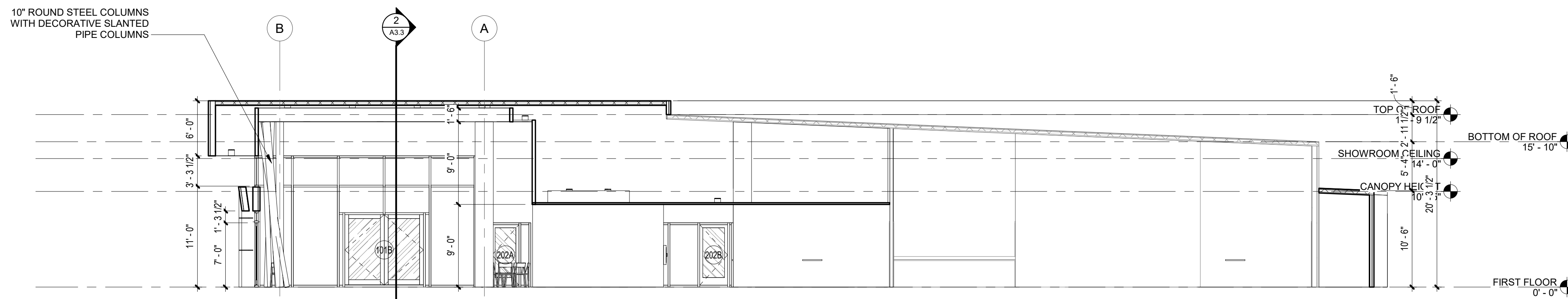
Drawn by
 BDS

Checked by
 KAB

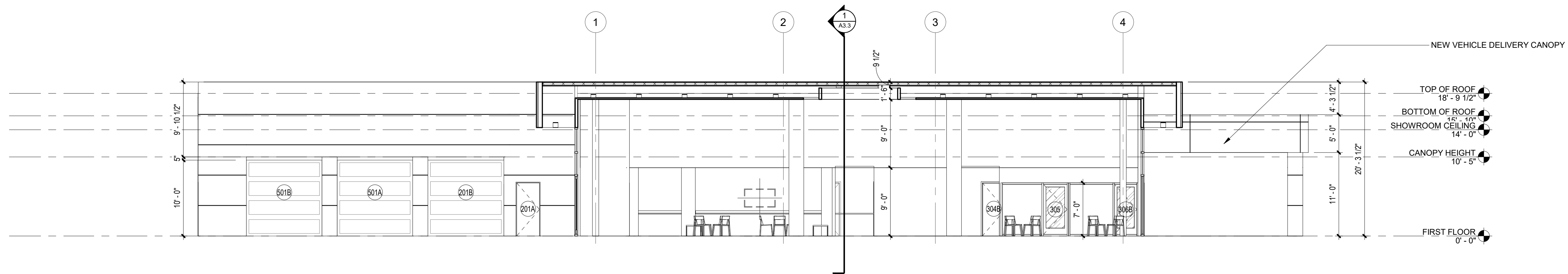
A0.0

Sheet No.

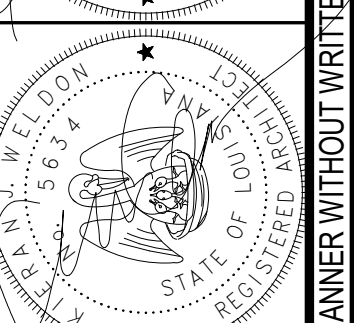
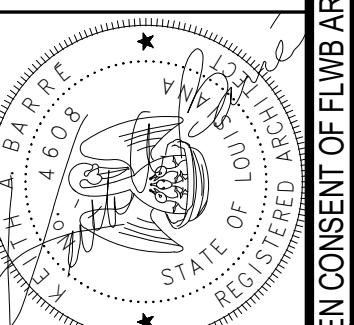
THESE DRAWINGS ARE THE SOLE PROPERTY OF FLWB ARCHITECTS, APC AND ARE ISSUED AS INSTRUMENTS OF SERVICE. THESE DRAWINGS SHALL NOT BE COPIED, REPRODUCED OR USED IN ANY MANNER WITHOUT WRITTEN CONSENT OF FLWB ARCHITECTS, APC.



1 Section 1
A3.3 1/8" = 1'-0"



2 Section 2
A3.3 1/8" = 1'-0"



ISSUE	DATE

A RENOVATION FOR
HYUNDAI OF SLIDELL

298 EAST HOWZE ROAD
SLIDELL, LA 70461

75% of Submittal

Date
31 JANUARY 2022

298 E HOWZE BEACH
ROAD, SLIDELL, LA 70461

BUILDING SECTION

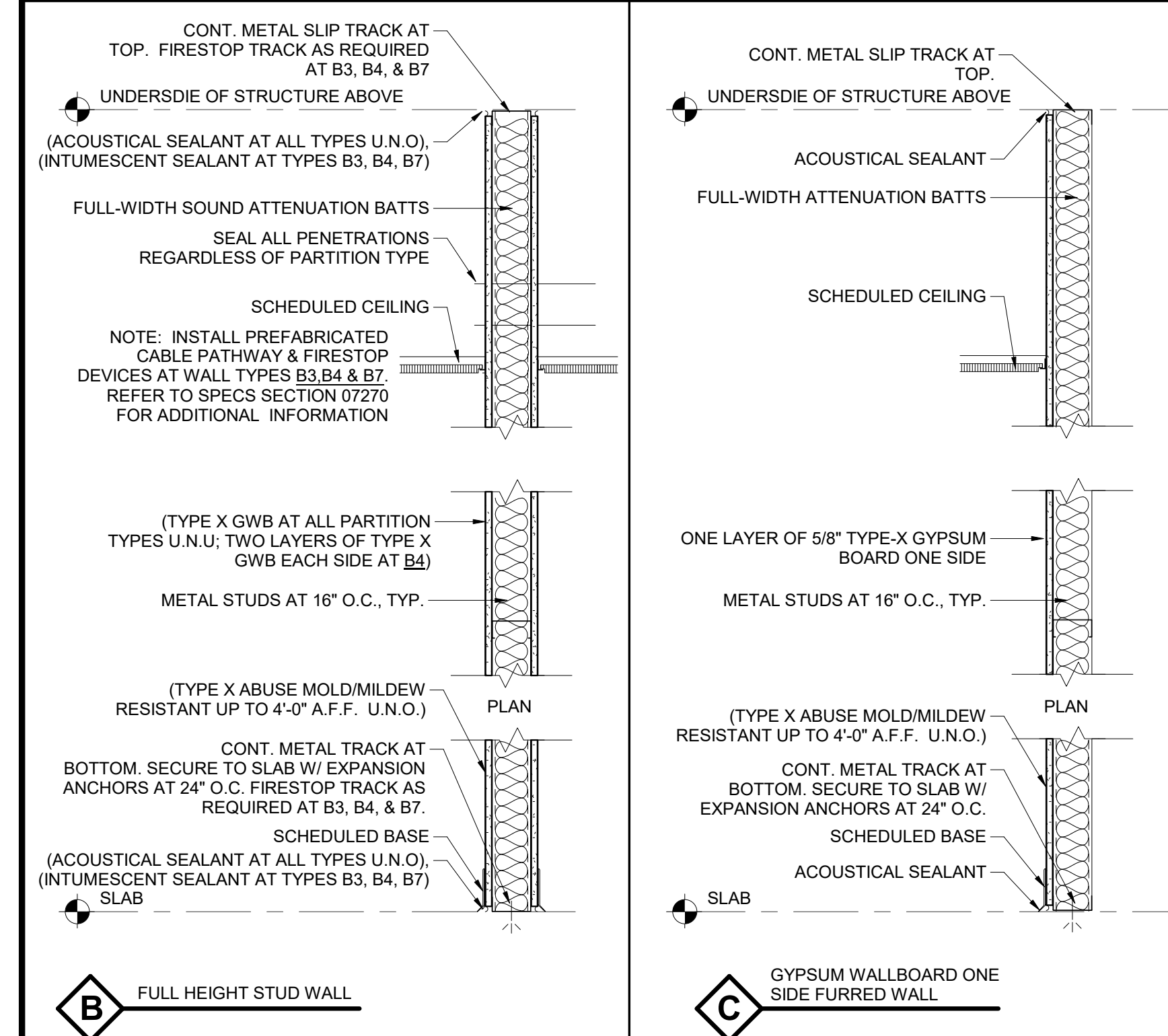
Job No. #

Drawn by Author
Checked by Checker

A3.3
Sheet No.

THESE DRAWINGS ARE THE SOLE PROPERTY OF FLWB ARCHITECTS, APC AND ARE ISSUED AS INSTRUMENTS OF SERVICE. THESE DRAWINGS SHALL NOT BE COPIED, REPRODUCED OR USED IN ANY MANNER WITHOUT WRITTEN CONSENT OF FLWB ARCHITECTS, APC.

WALL PARTITION TYPES



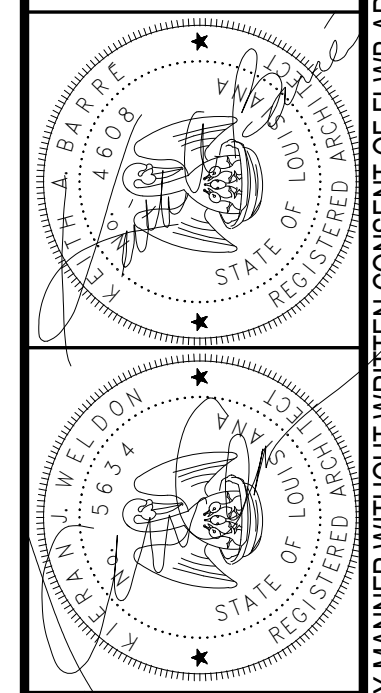
TYPE	DESCRIPTION	FIRE RATING	TEST NO.	DIM.	TYPE	DESCRIPTION	FIRE RATING	TEST NO.	DIM.
B1	3 5/8" METAL STUDS	-	-	4 7/8"	C1	3 5/8" METAL STUDS	--	--	4 1/4"
B2	6" METAL STUDS	-	-	7 1/4"					

ALL PARTITIONS ON FLOOR PLANS ARE TYPE B1 UNLESS NOTED OTHERWISE.

GENERAL PARTITION NOTES:

- PROVIDE MOISTURE RESISTANT DRYWALL ("GREEN BOARD") FOR ALL WALLS ADJACENT TO PLUMBING FIXTURES OR WITHIN WET AREAS. REFER TO PARTITION TYPES FOR ADDITIONAL AREAS.
- ALL STUDS TO BE 16" O.C. UNLESS NOTED OTHERWISE. PROVIDE METAL BRACING BEHIND ALL WALL MOUNTED CABINETS, ACCESSORIES, EQUIPMENT, ETC. ALL STUD SPACINGS SHOWN ARE MAXIMUMS.
- PARTITIONS OTHER THAN SHAFT WALLS:
ALL INTERIOR STUDS SHALL BE 20 GA OR GAUGE AS NECESSARY TO LIMIT DEFLECTION TO A MAXIMUM OF L/240. IF STUD HEIGHT EXCEEDS THAT LISTED IN A.S.T.M. C-754, TABLE 3, PROVIDE DOUBLE (BACK TO BACK) 20 GA STUDS. ALL STUDS IN PARTITIONS RECEIVING CERAMIC TILE FINISH SHALL HAVE A MAXIMUM DEFLECTION OF L/360.
- ALL PARTITIONS TO EXTEND TO UNDERSIDE OF DECK UNLESS NOTED OTHERWISE.
- SEAL ALL PENETRATIONS AT FIRE RATED PARTITIONS WITH U.L. APPROVED MATERIALS TO MAINTAIN FIRE RATING OF WALL ASSEMBLY.
- ALL DIMENSIONS ON PLANS ARE TO FACE OF STUDS UNLESS NOTED OTHERWISE.
- PERIMETER OF ALL PARTITIONS WITH SOUND ATTENUATION BLANKETS SHALL HAVE ACOUSTICAL SEALANT APPLIED ON BOTH SIDES, TOP AND BOTTOM. REFER TO SPECIFICATIONS FOR TYPE OF SEALANT.
- ALL ELECTRICAL PANELS, FIRE EXTINGUISHER CABINETS AND OTHER RECESSED EQUIPMENT LOCATED IN RATED PARTITIONS, SHALL BE INSTALLED IN FIRE RATED CABINETS OR BACKED AND BOXED WITH FIRE RATED GYPSUM WALLBOARD CONSTRUCTION TO MAINTAIN REQUIRED FIRE RATING AND INTEGRITY.
- ALL GYPSUM WALLBOARD PARTITIONS SHALL HAVE CONTROL JOINTS IN ACCORDANCE WITH THE SPECIFICATIONS. COORDINATE LOCATIONS WITH ARCHITECT.
- SEAL ALL PARTITIONS (NEW AND EXISTING) AROUND ALL DUCT, PIPING AND CONDUIT PENETRATIONS.

architecture
 planning
 sustainable design
 consulting
fl+ WB architects
 a professional corporation
 1404 GREENGATE DRIVE, SUITE 101
 COVINGTON, LA 70433
 985-893-4100
 a professional corporation in continuous practice since 1981



ISSUE	DATE

A RENOVATION FOR
 HYUNDAI OF SLIDELL
 298 EAST HOWZE ROAD
 SLIDELL, LA 70461

75% of Submittal

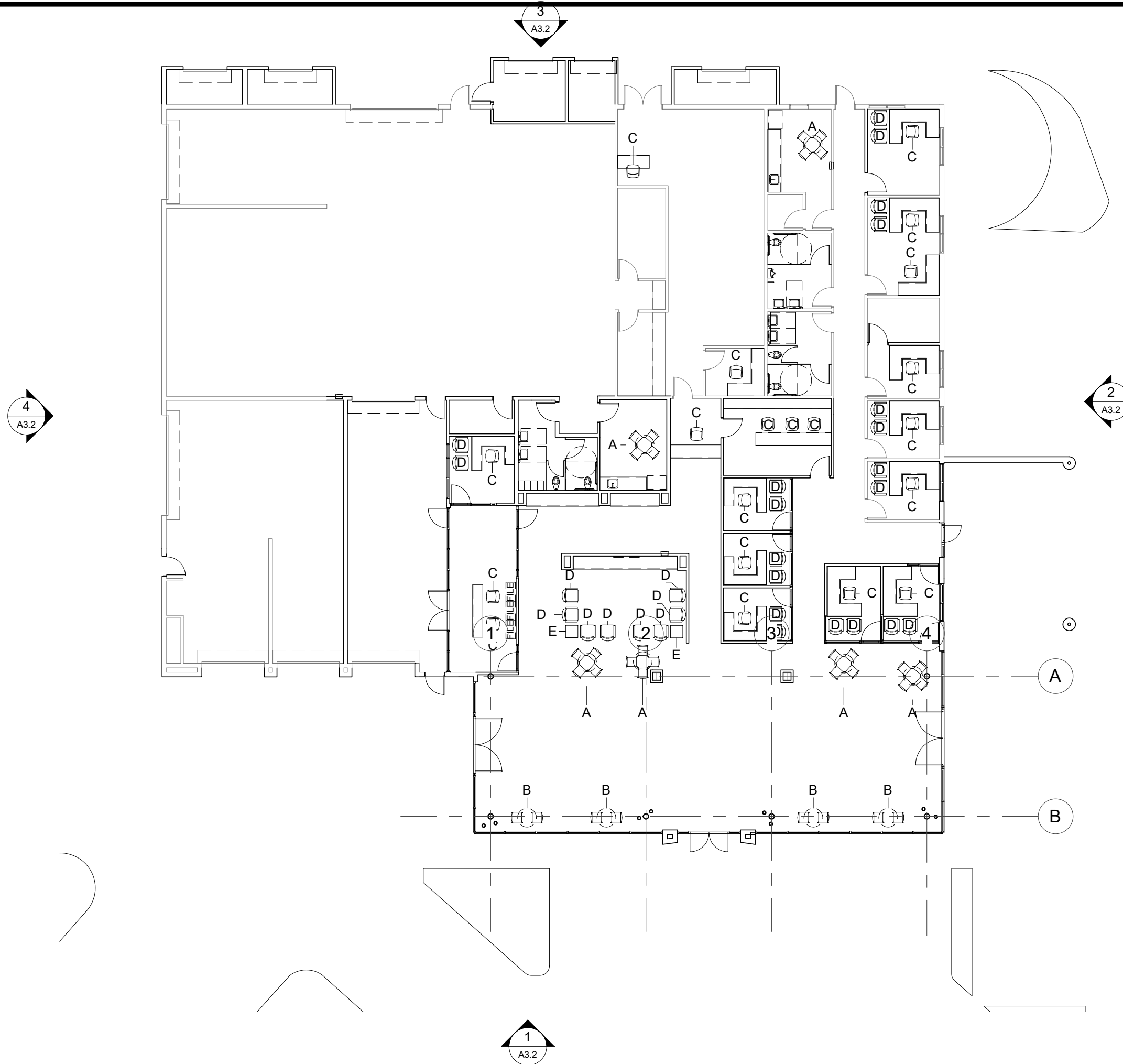
Date
31 JANUARY 2022

298 E HOWZE BEACH ROAD, SLIDELL, LA 70461

WALL PARTITION TYPES

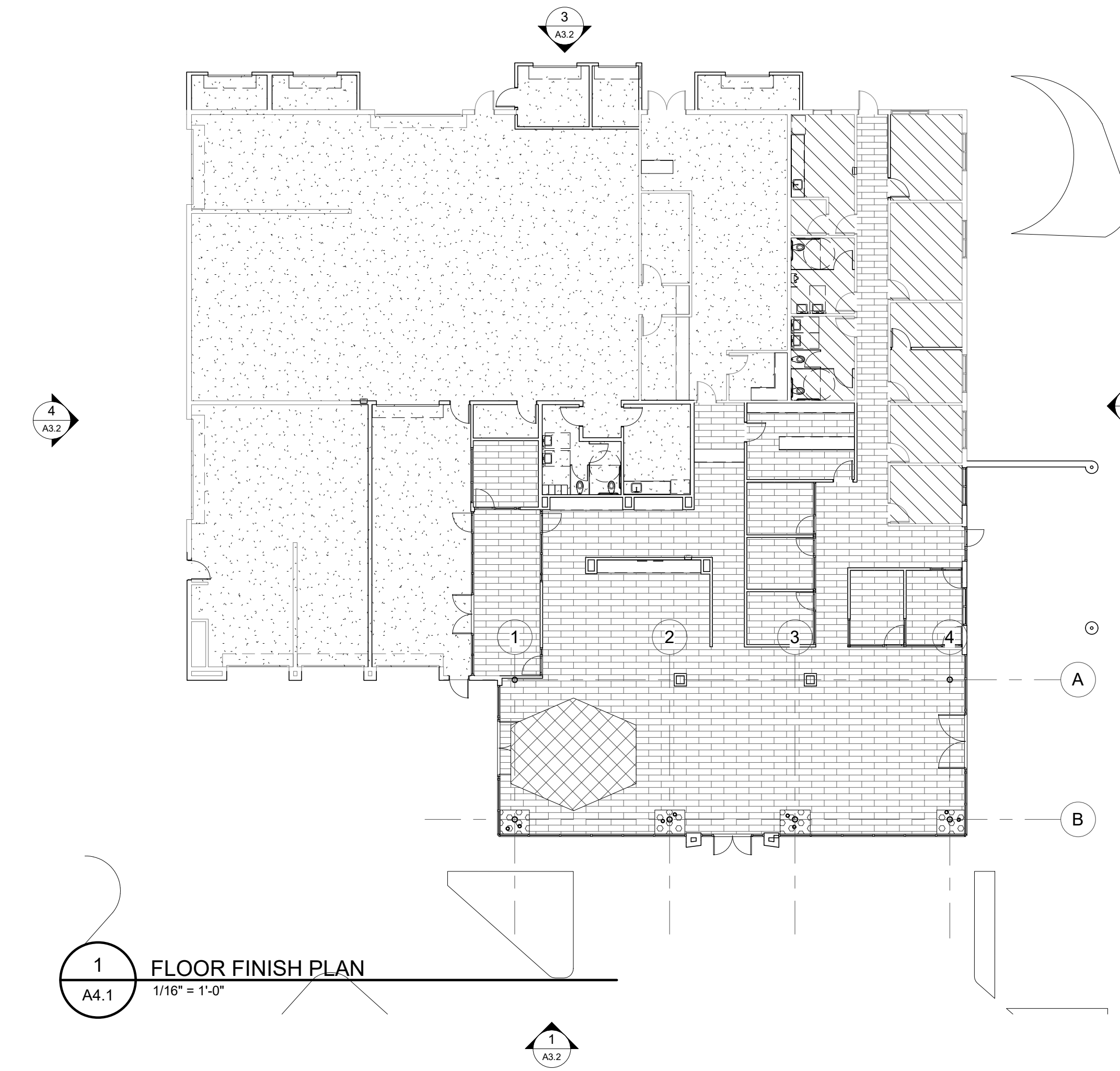
Job No. #
 Drawn by Author
 Checked by Checker

THESE DRAWINGS ARE THE SOLE PROPERTY OF FLWB ARCHITECTS, APC AND ARE ISSUED AS INSTRUMENTS OF SERVICE. THESE DRAWINGS SHALL NOT BE COPIED, REPRODUCED OR USED IN ANY MANNER WITHOUT WRITTEN CONSENT OF FLWB ARCHITECTS, APC.



Furniture Schedule		
Mark	Count	Furniture Type
A	6	x4 Lobby Chair and Table
B	4	x2 Lobby Chair and Table
C	20	Office Chair
D	28	Lounge Chair
E	2	End Table

2 FURNITURE PLAN
A4.1 1/16" = 1'-0"



LEGEND FLOOR PATTERNS PERTAIN TO THIS SHEET ONLY

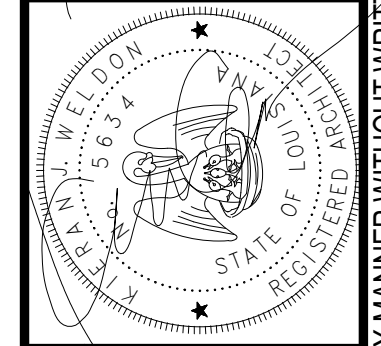
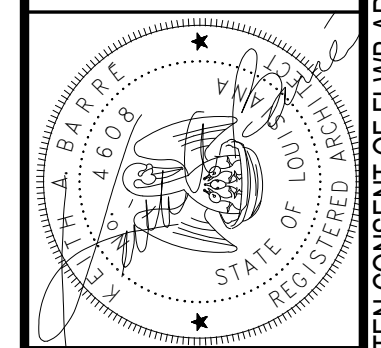
	SC SEALED CONCRETE
	VCT-E EXISTING TILE
	VCT-1 FIELD TILE (SABBIA_N, M302)
	VCT-2 ACCENT TILE (SABBIA_N, M83C)
	RIVER ROCK BASE

1 FLOOR FINISH PLAN
A4.1 1/16" = 1'-0"

architecture
planning
interior design
sustainable design
consulting

fl+ WB architects
a professional corporation incorporated in Louisiana since 1981

1404 GREENGATE DRIVE, SUITE 101
COVINGTON, LA 70433
985-893-4100



ISSUE	DATE

**A RENOVATION FOR
HYUNDAI OF SLIDELL**

298 EAST HOWZE ROAD
SLIDELL, LA 70461

75% of Submittal

Date
31 JANUARY 2022

298 E HOWZE BEACH
ROAD, SLIDELL, LA 70461

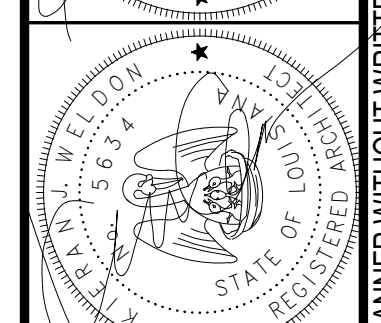
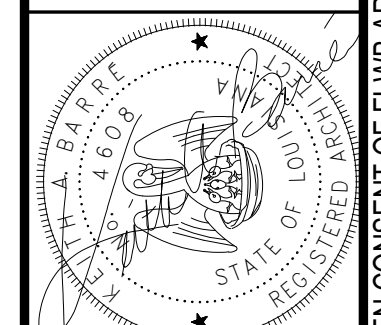
FLOOR FINISH PATTERN AND
FURNITURE PLAN.

Job No. #

Drawn by Author Checked by Checker

A4.1
Sheet No.

THESE DRAWINGS ARE THE SOLE PROPERTY OF FLWB ARCHITECTS, APC AND ARE ISSUED AS INSTRUMENTS OF SERVICE. THESE DRAWINGS SHALL NOT BE COPIED, REPRODUCED OR USED IN ANY MANNER WITHOUT WRITTEN CONSENT OF FLWB ARCHITECTS, APC.



ISSUE	DATE

**A RENOVATION FOR
HYUNDAI OF SLIDELL**

298 EAST HOWZE ROAD
SLIDELL, LA 70461

75% of Submittal

Date
31 JANUARY 2022

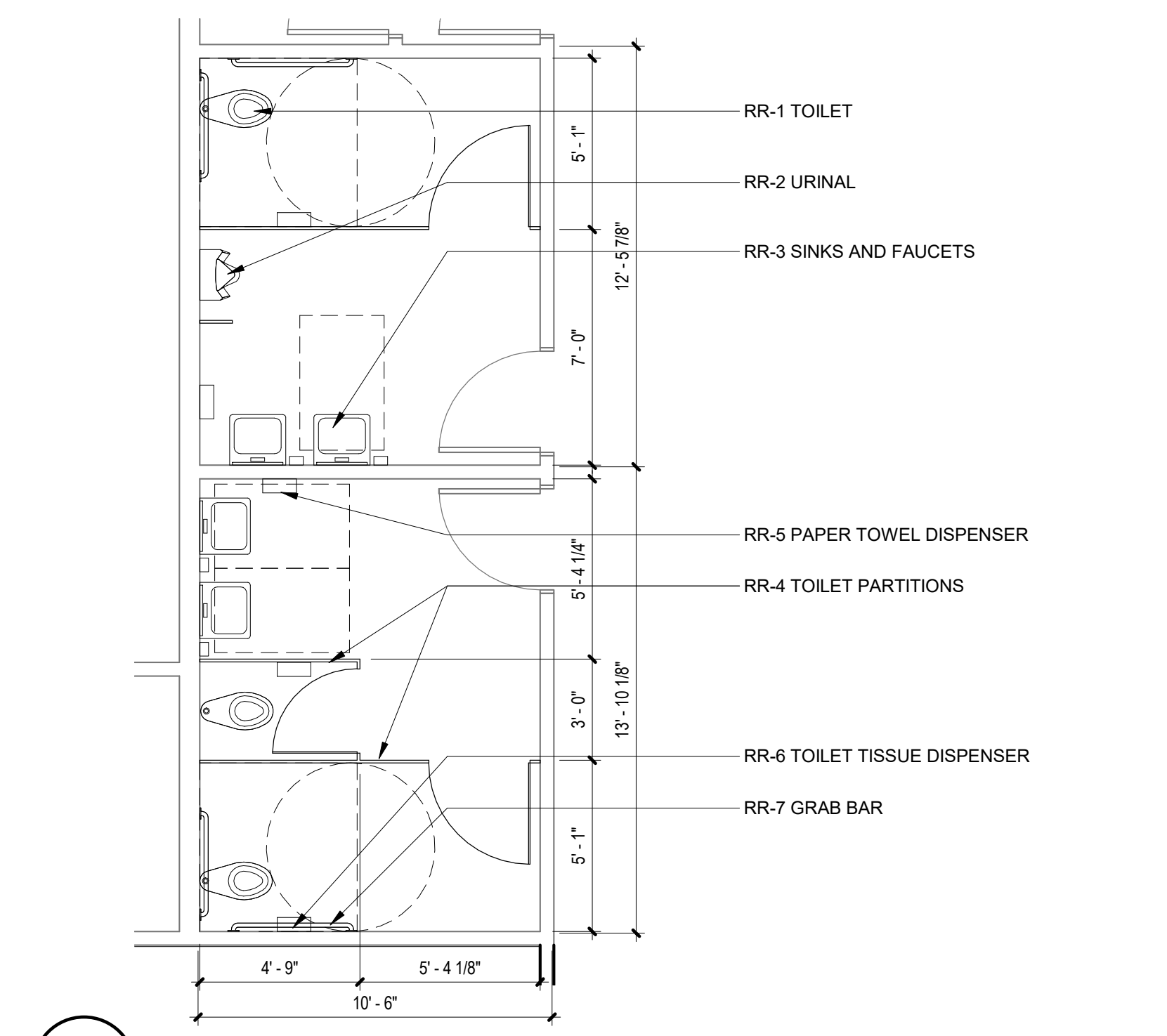
298 E HOWZE BEACH
ROAD, SLIDELL, LA 70461

ENLARGED PLANS

Job No. #
Drawn by Author
Checked by Checker

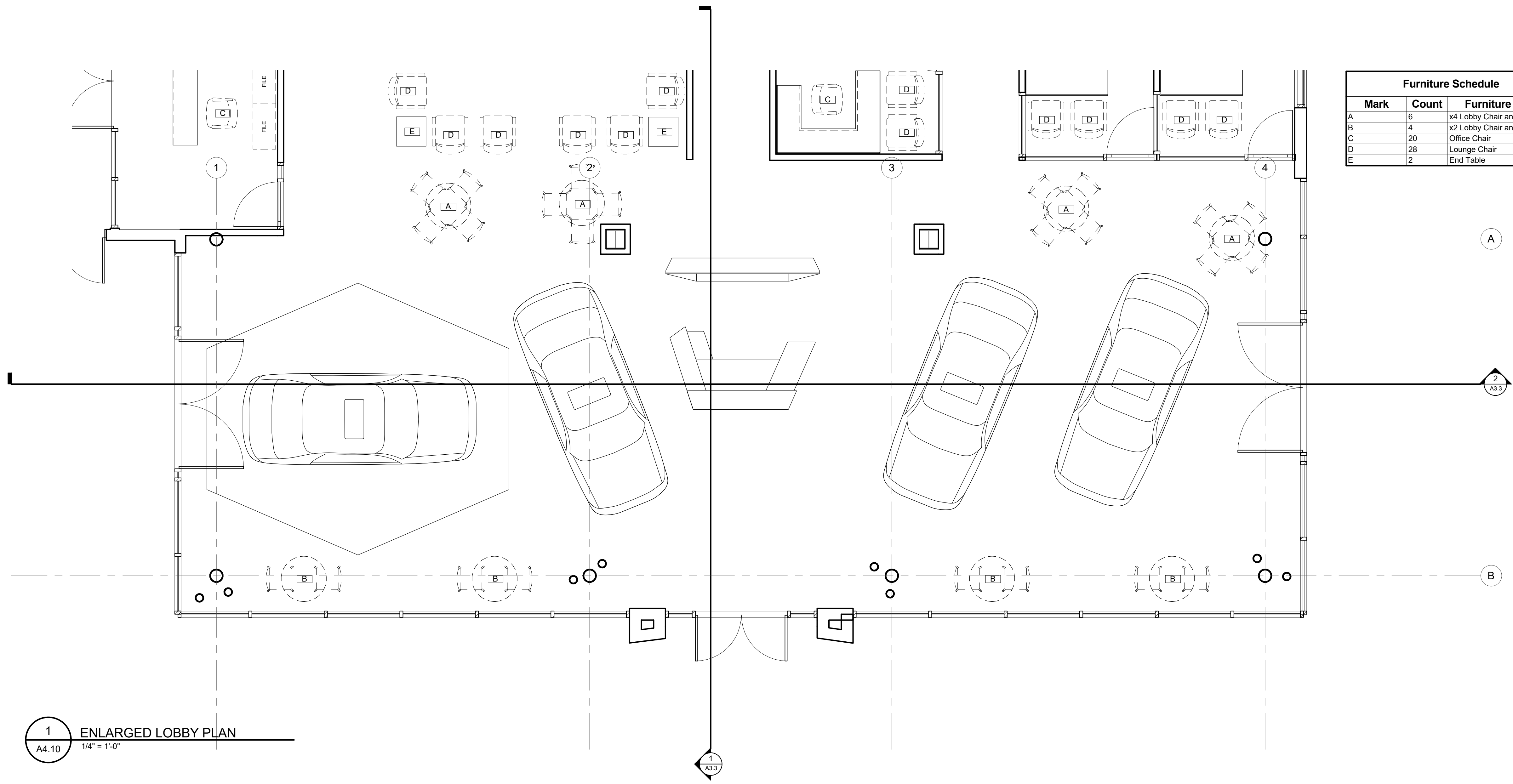
A4.10
Sheet No.

RESTROOM FIXTURE SCHEDULE		
LABEL	RESTROOM FIXTURE	DESCRIPTION
RR-1	TOILET	TOTO #CT705ULN, FLOOR-MOUNTED, COLOR "COTTON" (WHITE)
RR-2	URINAL	TOTO #UT105U, COLOR "COTTON" (WHITE)
RR-3	SINKS AND FAUCETS	ZURN SUNDARA SERIES "SURF" SINK w/ STAINLESS STEEL SHROUD & ZURN SERIO FAUCET/SOAP DISPENSER, CHROME FINISH
RR-4	TOILET PARTITIONS	BRADLEY MILLS SERIES 500 - FLOOR BRACED w/ BRUSHED STAINLESS STEEL FINISH & CHROMED ZAMAC HARDWARE
RR-5	PAPER TOWEL DISPENSER	BOBRICK CONTURA SERIES, RECESSED PAPER TOWEL DISPENSER & WASTE RECEPTACLE, B43944, STAINLESS STEEL FINISH
RR-6	TOILET TISSUE DISPENSER	BOBRICK CONTURA SERIES, SURFACE-MOUNTED MULTI-ROLL TOILET TISSUE DISPENSER, B4298, STAINLESS STEEL FINISH
RR-7	GRAB BAR	BOBRICK TWO-WALL TOILET COMPARTMENT GRAB BAR, B6897, SATIN FINISH



2 ENLARGED RESTROOM PLAN
A4.10 1/4" = 1'-0"

Furniture Schedule		
Mark	Count	Furniture Type
A	6	x4 Lobby Chair and Table
B	4	x2 Lobby Chair and Table
C	20	Office Chair
D	28	Lounge Chair
E	2	End Table

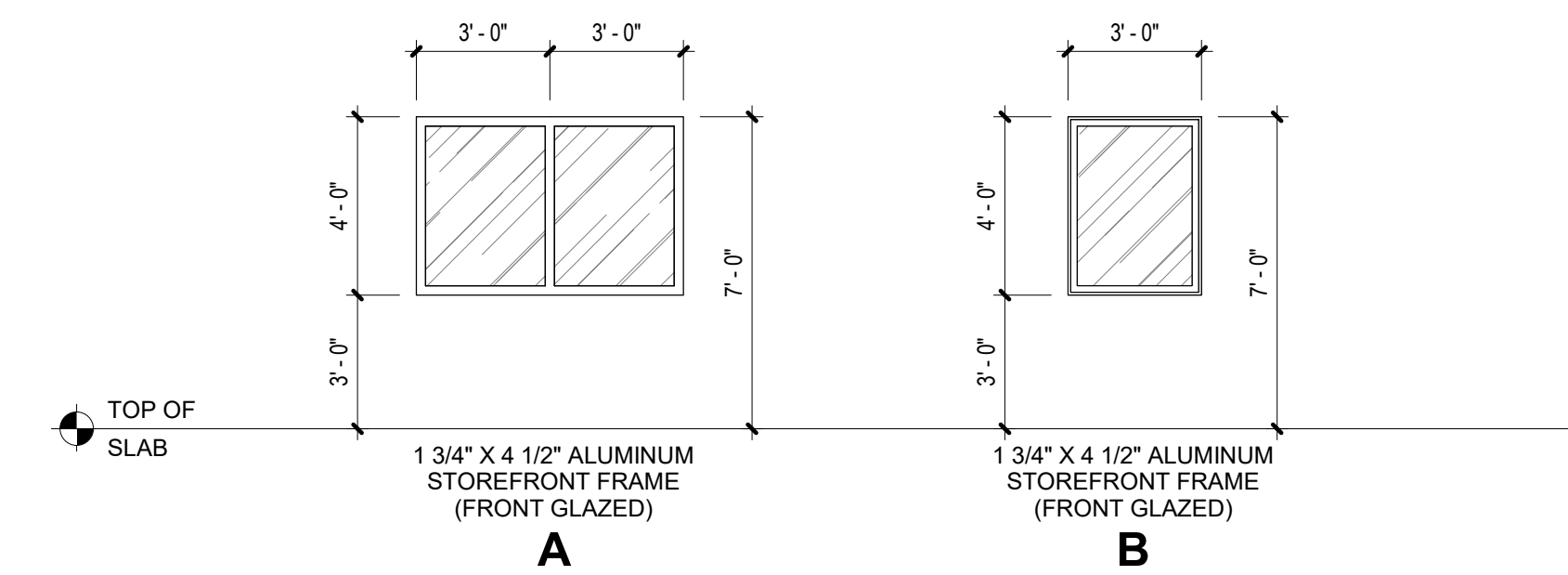


1 ENLARGED LOBBY PLAN
A4.10 1/4" = 1'-0"

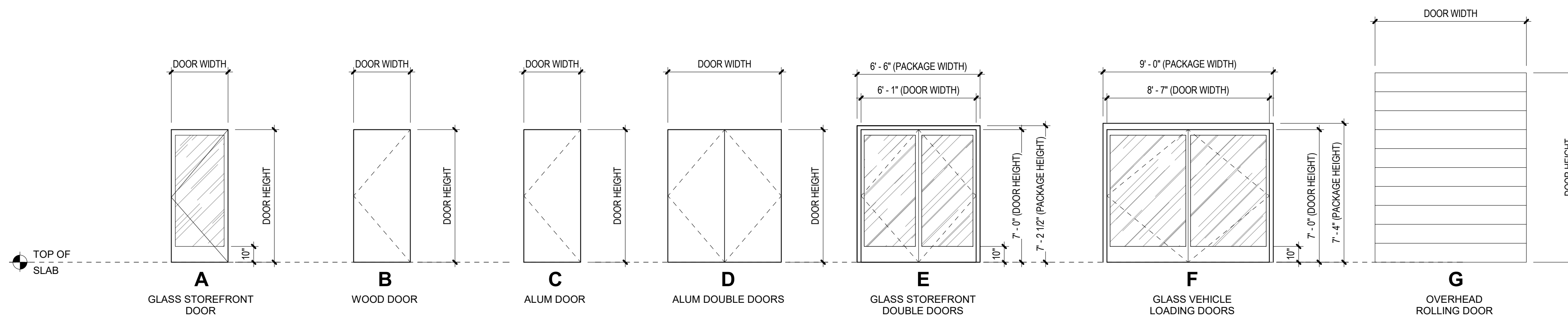
THESE DRAWINGS ARE THE SOLE PROPERTY OF FLWB ARCHITECTS, APC AND ARE ISSUED AS INSTRUMENTS OF SERVICE. THESE DRAWINGS SHALL NOT BE COPIED, REPRODUCED OR USED IN ANY MANNER WITHOUT WRITTEN CONSENT OF FLWB ARCHITECTS, APC.

DOOR SCHEDULE													
MARK	TYPE	MATERIAL	SIZE			HARDWARE SET	FRAME MATERIAL	FRAME TYPE	DETAILS			FIRE RATING	REMARKS/ NOTES
			WIDTH	HEIGHT	THICKNESS				HEAD	JAMB	SILL		
101A	E	GLASS	6'-6"	7'-0"	1 3/4"		ALUM	5	1 3/4"	1 3/4"	1 3/4"		
101B	F	ALUM / GLASS	9'-0"	7'-0"	1 3/4"		ALUM	6	2 1/2"	2 1/2"	2 1/2"		
101C	F	ALUM / GLASS	9'-0"	7'-0"	1 3/4"		ALUM	6	2 1/2"	2 1/2"	2 1/2"		
102	A	GLASS	3'-0"	7'-0"	1 1/2"		ALUM	3	1 3/4"	1 3/4"	1 3/4"		
103	C	ALUM	3'-0"	7'-0"	1 3/4"		ALUM	1	2"	2"	2"		
201A	C	ALUM	3'-0"	7'-0"	1 3/4"		ALUM	1	2"	2"	2"		
201B	G	ALUM	10'-0"	10'-0"	3"		ALUM	4	-	-	-		
201C	C	ALUM	10'-0"	10'-0"	3"		ALUM	4	-	-	-		
201D	C	ALUM	3'-0"	7'-0"	1 3/4"		ALUM	1	2"	2"	2"		
202A	A	GLASS	3'-0"	7'-0"	1 1/2"		ALUM	3	1 3/4"	1 3/4"	1 3/4"		
202B	A	GLASS	3'-0"	7'-0"	1 1/2"		ALUM	3	1 3/4"	1 3/4"	1 3/4"		
202C	A	GLASS	3'-0"	7'-0"	1 1/2"		ALUM	3	1 3/4"	1 3/4"	1 3/4"		
202D	E	GLASS	6'-6"	7'-0"	1 3/4"		ALUM	3	2 1/2"	2 1/2"	2 1/2"		
203	A	GLASS	3'-0"	7'-0"	1 1/2"		ALUM	3	1 3/4"	1 3/4"	1 3/4"		
301	A	GLASS	3'-0"	7'-0"	1 1/2"		ALUM	3	1 3/4"	1 3/4"	1 3/4"		
302	A	GLASS	3'-0"	7'-0"	1 1/2"		ALUM	3	1 3/4"	1 3/4"	1 3/4"		
303	A	GLASS	3'-0"	7'-0"	1 1/2"		ALUM	3	1 3/4"	1 3/4"	1 3/4"		
304A	B	WOOD	3'-0"	7'-0"	1 3/4"		ALUM	1	2"	2"	2"		
304B	B	WOOD	3'-0"	7'-0"	1 3/4"		ALUM	1	2"	2"	2"		
305	A	GLASS	3'-0"	7'-0"	1 1/2"		ALUM	3	1 3/4"	1 3/4"	1 3/4"		
306A	A	GLASS	3'-0"	7'-0"	1 1/2"		ALUM	3	1 3/4"	1 3/4"	1 3/4"		
306B	A	GLASS	3'-0"	7'-0"	1 1/2"		ALUM	3	1 3/4"	1 3/4"	1 3/4"		
307	B	WOOD	3'-0"	7'-0"	1 3/4"		ALUM	1	2"	2"	2"		
308	B	WOOD	3'-0"	7'-0"	1 3/4"		ALUM	1	2"	2"	2"		
309A	B	WOOD	3'-0"	7'-0"	1 3/4"		ALUM	1	2"	2"	2"		
309B	B	WOOD	3'-0"	7'-0"	1 3/4"		ALUM	1	2"	2"	2"		
310	B	WOOD	3'-0"	7'-0"	1 3/4"		ALUM	1	2"	2"	2"		
311	B	WOOD	3'-0"	7'-0"	1 3/4"		ALUM	1	2"	2"	2"		
312	B	WOOD	3'-0"	7'-0"	1 3/4"		ALUM	1	2"	2"	2"		
313A	B	WOOD	3'-0"	7'-0"	1 3/4"		ALUM	1	2"	2"	2"		
313B	B	WOOD	3'-0"	7'-0"	1 3/4"		ALUM	1	2"	2"	2"		
314	B	WOOD	3'-0"	7'-0"	1 3/4"		ALUM	1	2"	2"	2"		
401	B	WOOD	3'-0"	7'-0"	1 3/4"		ALUM	1	2"	2"	2"		
402	B	WOOD	3'-0"	7'-0"	1 3/4"		ALUM	1	2"	2"	2"		
403	B	WOOD	3'-0"	7'-0"	1 3/4"		ALUM	1	2"	2"	2"		
404	D	ALUM	6'-0"	7'-0"	1 3/4"		ALUM	2	2"	2"	2"		
501A	G	ALUM	10'-0"	10'-0"	3"		ALUM	4	-	-	-		
501B	G	ALUM	10'-0"	10'-0"	3"		ALUM	4	-	-	-		
501C	C	ALUM	3'-0"	7'-0"	1 3/4"		ALUM	1	2"	2"	2"		
501D	G	ALUM	16'-0"	10'-0"	3"		ALUM	4	-	-	-		
501E	G	ALUM	14'-0"	10'-0"	3"		ALUM	4	-	-	-		
501F	C	ALUM	3'-0"	7'-0"	1 3/4"		ALUM	1	2"	2"	2"		
502	G	ALUM	12'-0"	10'-0"	3"		ALUM	4	-	-	-		
503	G	ALUM	7'-0"	8'-0"	3"		ALUM	4	-	-	-		
504	G	ALUM	7'-0"	8'-0"	3"		ALUM	4	-	-	-		
505A	G	ALUM	7'-0"	8'-0"	3"		ALUM	4	-	-	-		
505B	C	ALUM	3'-0"	7'-0"	1 3/4"		ALUM	1	2"	2"	2"		
506	G	ALUM	6'-0"	8'-0"	3"		ALUM	4	-	-	-		
507	G	ALUM	7'-0"	8'-0"	3"		ALUM	4	-	-	-		
508	B	WOOD	3'-0"	7'-0"	1 3/4"		ALUM	1	2"	2"	2"		
509	B	WOOD	3'-0"	7'-0"	1 3/4"		ALUM	1	2"	2"	2"		
510	B	WOOD	3'-0"	7'-0"	1 3/4"		ALUM	1	2"	2"	2"		
511	B	WOOD	3'-0"	7'-0"	1 3/4"		ALUM	1	2"	2"	2"		

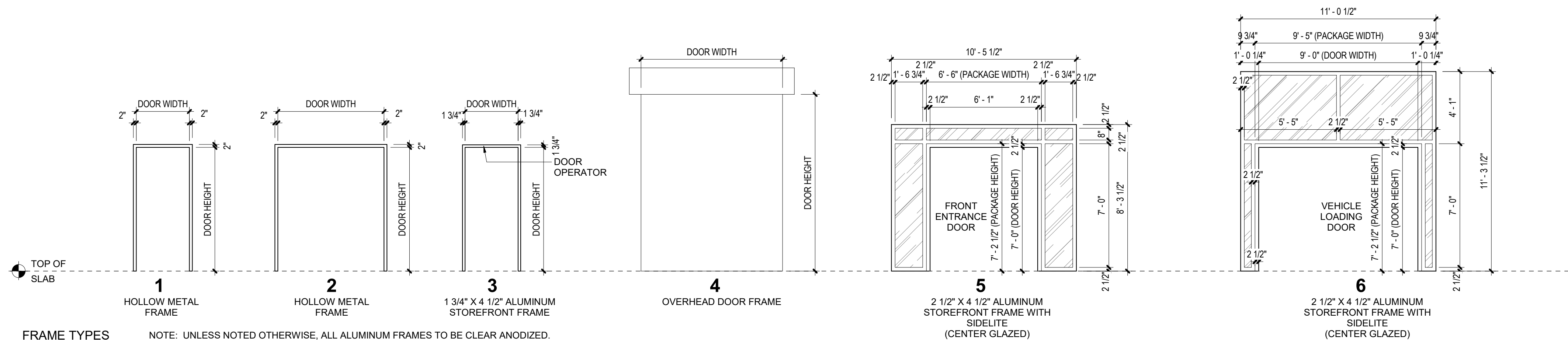
WINDOW SCHEDULE										
MARK	TYPE	MATERIAL	SIZE		DETAILS			HEAD HEIGHT	FIRE RATING	REMARKS
			WIDTH	HEIGHT	HEAD	JAMB	SILL			
306	A	ALUM	6'-0"	4'-0"	2.5"	2.5"	2.5"	7'-0"		
307	A	ALUM	6'-0"	4'-0"	2.5"	2.5"	2.5"	7'-0"		
308	A	ALUM	6'-0"	4'-0"	2.5"	2.5"	2.5"	7'-0"		
309	A	ALUM	6'-0"	4'-0"	2.5"	2.5"	2.5"	7'-0"		
312	A	ALUM	6'-0"	4'-0"	2.5"	2.5"	2.5"	7'-0"		
313	B	ALUM	3'-0"	4'-0"	2.5"	2.5"	2.5"	7'-0"		
314A	A	ALUM	6'-0"	4'-0"	2.5"	2.5"	2.5"	7'-0"		
314B	A	ALUM	6'-0"	4'-0"	2.5"	2.5"	2.5"	7'-0"		



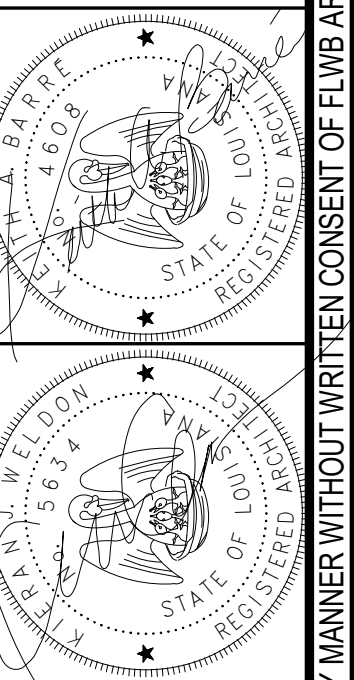
WINDOW TYPES NOTE: UNLESS NOTED OTHERWISE, ALL ALUMINUM FRAMES TO BE CLEAR ANODIZED.
SCALE: 1/4" = 1'-0"



DOOR TYPES NOTE: UNLESS NOTED OTHERWISE, ALL ALUMINUM FRAMES TO BE CLEAR ANODIZED.
SCALE: 1/4" = 1'-0"



FRAME TYPES NOTE: UNLESS NOTED OTHERWISE, ALL ALUMINUM FRAMES TO BE CLEAR ANODIZED.
SCALE: 1/4" = 1'-0"



DATE	
ISSUE	

A RENOVATION FOR
HYUNDAI OF SLIDELL
298 EAST HOWZE ROAD
SLIDELL, LA 70461

75% of Submittal

Date
31 JANUARY 2022
298 E HOWZE BEACH
ROAD, SLIDELL, LA 70461

DOOR SCHEDULES AND
TYPES AND WINDOW
SCHEDULE AND TYPES
JOB NO. #
Drawn by Author Checked by Checker

