

**NOTE:**  
CONTRACTOR TO USE EXTREME CAUTION DURING ALL EXCAVATION AS TO NOT DISTURB ANY REMAINING UNDERGROUND UTILITIES.

- NOTES:**
1. FOR TITLE SHEET AND DRAWING INDEX SEE SHEET 70905F01.
  2. FOR CONCRETE GENERAL NOTES SEE DWG. 70905F01A.

**PLUMBING NOTES:**

1. PROVIDE CATCH BASIN AS PER DETAIL, SEE DWG. 70905F06. COORDINATE FIELD VERIFY DEPTH, PRIOR TO INSTALLATION. ROUTE 4" SCH. 80 PVC SOIL PIPING FROM CATCH BASIN AS SHOWN.
2. SCHEDULE 80 PVC PIPING AS SHOWN.

**LEGEND:**

- DENOTES DRAINAGE FLOW DIRECTION.
- DENOTES PAVING SLOPE DIRECTION.
- 4" S — DENOTES 4" SCH. 80 PVC SOIL PIPING.
- — DENOTES CONTROL POINT.
- — DENOTES CONTROL JOINT. SEE DETAIL DWG. 70905F03.
- D.C.L. — DENOTES DOWELED CONTROL JOINT (Ø WALL)
- L.P.P. — SEE DETAIL DWG. 70905F03.
- H.P.P. — DENOTES HIGH POINT OF PAVING.

**CONCRETE NOTES:**

1. CONCRETE SHALL DEVELOP A MINIMUM COMPRESSIVE STRENGTH OF 4000 PSI. 8" DWS. MINIMUM AGGREGATE SIZE SHALL BE 1-1/2". MAXIMUM SAND SHALL BE 4% (UNLESS NOTED OTHERWISE). AIR CONTENT SHALL BE BETWEEN 4% AND 6%.
2. GRANULAR BASE COURSE SHOULD CONSIST OF CRUSHED STONE COMPLYING WITH THE GRADATION REQUIREMENTS OUTLINED IN LA DOTD SECTION 100303 FOR A SIZE No. 610 MATERIAL.

**NOTE:**  
AN ALTERNATE TO CONCRETE APPROACH RAMP, 10" THICK, 4% SLOPE, MAXIMUM AGGREGATE SIZE SHALL BE 1-1/2". MAXIMUM SAND SHALL BE 4% (UNLESS NOTED OTHERWISE). AIR CONTENT SHALL BE BETWEEN 4% AND 6%.

**NOT FOR CONSTRUCTION**

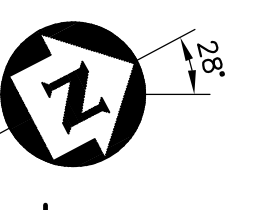
**IESI COVINGTON PICKUP STATION**  
FOUNDATION PLAN  
CIVIL

COVINGTON, LA 6/08



DESIGNED	CJG	DRAWN	DMD	CHECKED	JCA	APPROVED	DLS
ISSUED FOR BID	4/09	REV.	0	DESCRIPTION	REVISIONS	DWG.	REV.
DRAWING NUMBER		70905F01					

**FOUNDATION PLAN**  
SCALE: 3/32"=1'-0"



## CONCRETE GENERAL NOTES

1. **GENERAL**  
THESE NOTES ARE PART OF ALL DRAWINGS THAT REFER TO THEM. IN CASE OF A CONFLICT BETWEEN THE DRAWINGS, THESE NOTES, AND THE JOB SPECIFICATIONS, THE ORDER OF PRIORITY SHALL BE AS FOLLOWS:  
FIRST: THE DRAWINGS  
SECOND: THESE NOTES  
THIRD: THE JOB SPECIFICATIONS
2. **COORDINATES**  
ANY COORDINATES SHOWN ARE FOR REFERENCE ONLY. NEW FOUNDATIONS SHALL BE LOCATED USING "DIMENSIONS FROM EXISTING FACILITIES" AS SHOWN ON DRAWINGS.
3. **REFERENCE SPECIFICATIONS**  
REQUIREMENTS FOR FABRICATION AND PLACING OF REINFORCEMENT AND CONCRETE SHALL BE IN ACCORDANCE WITH THE "SPECIFICATIONS FOR STRUCTURAL CONCRETE ACI-301 (LATEST REVISION), AND OSHA 29 CFR 1926 (LATEST REVISION) – SAFETY STANDARDS FOR STEEL ERECTION; FINAL RULE.
4. **MATERIALS**  
A. CONCRETE SHALL HAVE A MINIMUM 28 DAY COMPRESSIVE STRENGTH OF 3000 PSI.  
B. REINFORCING BARS SHALL BE DEFORMED BARS OF GRADE 60 STEEL CONFORMING TO ASTM A615.  
C. WELDED WIRE FABRIC SHALL CONFORM TO ASTM A185.  
D. ANCHOR BOLT MATERIAL SHALL CONFORM TO ASTM A307 OR ASTM A36.  
E. NUTS FOR ANCHOR BOLTS SHALL BE HEAVY HEX AND SHALL CONFORM TO ASTM A563 GRADE A.  
F. WASHERS FOR ANCHOR BOLTS SHALL BE PLAIN WASHERS CONFORMING TO ASTM F844.  
G. EMBEDDED STEEL SHALL CONFORM TO ASTM A36.  
I. ANCHOR BOLTS, NUTS, WASHERS AND EXPOSED EMBEDDED STEEL SHALL BE HOT DIP GALVANIZED IN ACCORDANCE WITH ASTM A123.
5. **CONCRETE COVER**  
CONCRETE COVER FOR REINFORCING BARS FOR CAST-IN-PLACE CONCRETE SHALL BE AS FOLLOWS, UNLESS SHOWN OTHERWISE ON THE DRAWINGS.  

MINIMUM COVER (INCHES)	2
1) CONCRETE CAST AGAINST AND PERMANENTLY EXPOSED TO EARTH	3
2) CONCRETE EXPOSED TO EARTH OR WEATHER	2
6. **CONCRETE SURFACE FINISHES**  
UNLESS OTHERWISE NOTED ON THE DRAWINGS, CONCRETE SURFACES SHALL BE FINISHED AS FOLLOWS:  
A. FOUNDATIONS  
1) FORMED SURFACES NOT EXPOSED TO VIEW SHALL BE AS FORMED.  
2) FORMED SURFACES EXPOSED TO VIEW SHALL HAVE A SMOOTH, HARD, UNIFORM TEXTURE. FORM MATERIAL WITH RAISED GRAIN, TORN SURFACES, WORN EDGES, PATCHES, DENTS OR OTHER DEFECTS SHALL NOT BE USED.  
B. AREA PAVING  
1) IMMEDIATELY AFTER THE CONCRETE HAS BEEN CONSOLIDATED AND SCREDED, HIGH AND LOW SPOTS SHALL BE ELIMINATED WITH A BULL FLOAT.  
2) AFTER BLEED WATER SHEEN HAS EVAPORATED AND WHEN SLAB SUSTAINS FOOT PRESSURE WITH ONLY A SLIGHT INDENTATION, THE CONCRETE SHALL BE HAND FLOATED WITH WOOD.  
3) AFTER THE CONCRETE HAS BEEN FLOATED TO A SMOOTH SURFACE, IT SHOULD BE BRUSHED WITH A SOFT-BRISTLE BROOM.

7. **GROUTING**  
A. GROUT SHALL BE NONSHRINK CEMENT GROUT (FIVE STAR OR APPROVED EQUAL) EXCEPT FOR ALL PUMPS (FIVE STAR HP EPOXY GROUT OR APPROVED EQUAL) OR OTHERWISE CALLED FOR ON THE DRAWINGS. IN GENERAL, NONSHRINK CEMENT GROUT SHALL BE USED FOR:  
1) UNDER STRUCTURAL COLUMN BASE PLATES.  
2) UNDER STATIC EQUIPMENT.  
B. THE CONCRETE SURFACE TO BE GROUTED SHALL BE CLEAN, SOUND AND ROUGHENED SO THAT THE LARGE AGGREGATE IS EXPOSED. THE CONCRETE SURFACE SHALL ALSO BE SATURATED WITH WATER PRIOR TO RECEIVING GROUT.  
C. PLACEMENT OF ALL GROUT (INCLUDING EPOXY) SHALL BE CONTINUOUS FROM ONE SIDE TO THE OTHER TO AVOID TRAPPING AIR AND TO INSURE MAXIMUM EFFECTIVE BEARING AREA. GROUT HOLES SHALL BE USED AS REQUIRED TO INSURE MAXIMUM EFFECTIVE BEARING AREA.  
D. THE GROUT SHALL BE CURED FOR THREE DAYS IMMEDIATELY FOLLOWING INSTALLATION BY COVERING EXPOSED SURFACES OF GROUT WITH WETTED RAGS OR SEALING WITH POLYETHYLENE SHEETING. IMMEDIATELY PRIOR TO GROUTING AND THROUGHOUT THE CURING PERIOD, ALL SURFACES IN CONTACT WITH THE GROUT SHALL BE BELOW 90°F AND ABOVE 40°F.  
E. GROUT SHALL BE INSTALLED IN ACCORDANCE WITH THE MANUFACTURER'S SPECIFICATIONS.  
F. DOWELS SHALL BE EPOXY GROUTED USING THE "HILTI HIT HY-150 MAX" SYSTEM, OR APPROVED EQUAL. MANUFACTURER'S INSTALLATION PROCEDURES SHALL BE STRICTLY FOLLOWED.
8. **JOINTS**  
A. CONSTRUCTION JOINTS SHALL BE MADE AT THE LOCATIONS AND IN ACCORDANCE WITH THE DETAILS SHOWN ON THE DRAWINGS.  
B. LOCATIONS AND DETAILS OF JOINTS FOR SLABS AT GRADE ARE SHOWN ON THE DRAWINGS. JOINT SPACING FOR SLABS SHALL NOT EXCEED 30FT. SAWED CONTROL JOINTS SHALL BE SAWED WITHIN 12 TO 24 HOURS AFTER PLACING CONCRETE.  
C. EXPANSION JOINTS IN PAVING AND AROUND EQUIPMENT FOUNDATIONS SHALL CONSIST OF 1/2" THICK PREFORMED, NON-EXTRUDING BITUMENOUS JOINT FILLER. JOINT SHALL BE SEALED WITH A 2-COMPONENT POLYURETHANE ELASTOMERIC SEALANT (SIKAFLEX – SC, NS/SL AS MANUFACTURED BY SIKA CORP. OR APPROVED EQUAL). A PREFORMED FOAM BACKER ROD CONFORMING TO ASTM D1056 SHALL BE INSTALLED ABOVE THE JOINT FILLER PRIOR TO PLACING SEALANT.  
D. CONTROL JOINTS IN PAVING SHALL BE SEALED WITH A 2-COMPONENT, FLEXIBLE EPOXY JOINT SEALANT (SIKADUR 51 NS/SL AS MANUFACTURED BY SIKA CORP OR APPROVED EQUAL).
9. **CONCRETE CURING**  
A. BEFORE ANY LOADS ARE APPLIED TO NEW CONCRETE THE CONTRACTOR SHALL CERTIFY THE PROPER CURING OF THE CONCRETE IN FULL ACCORDANCE WITH OSHA 29 CFR 1926 (LATEST VERSION) – "SAFETY STANDARDS FOR STEEL ERECTION;" FINAL RULE.

10. **MISCELLANEOUS**  
A. COORDINATE CONCRETE WORK WITH SEWER, PIPING, ELECTRICAL AND MECHANICAL WORK PRIOR TO PLACING CONCRETE. ALL EMBEDDED ITEMS SHALL BE PROPERLY POSITIONED AND SECURELY HELD IN PLACE PRIOR TO PLACING CONCRETE. FORMING EMBEDDED ITEMS INTO WET CONCRETE IS STRICTLY PROHIBITED.  
B. COLD WEATHER CONCRETING SHALL CONFORM TO ACI 306 (LATEST VERSION).  
C. HOT WEATHER CONCRETING SHALL CONFORM TO ACI 305 (LATEST VERSION).  
D. ALL EXPOSED EDGES OF CONCRETE SHALL HAVE 3/4" CHAMFER.  
E. ANCHOR BOLT SLEEVES SHALL BE SINCO/WILSON (PVC TYPE) OR APPROVED EQUAL UNLESS OTHERWISE NOTED.  
F. CONCRETE ADHESIVE SHALL BE APPLIED TO ALL CONTACT SURFACES BETWEEN NEW AND EXISTING CONCRETE AND TO CONTACT SURFACES BETWEEN ADJACENT POURS OF NEW CONCRETE. CONCRETE ADHESIVE SHALL BE SIKADUR 32, HI-MOD LPL OR APPROVED EQUAL. APPLY IN ACCORDANCE WITH MANUFACTURER'S RECOMMENDATIONS.  
G. EXCEPT AS SHOWN ON DRAWINGS, ALL REBARS SHALL HAVE MINIMUM CLASS B SPLICE LENGTH AS SHOWN BELOW.

**REBAR SPLICE CHART (3000 PSI CONCRETE)**

REBAR SIZE	MIN. SPLICE LENGTH	REBAR SIZE	MIN. SPLICE LENGTH
#3	28"	#8	93"
#4	37"	#9	104"
#5	46"	#10	118"
#6	56"	#11	131"
#7	81"		

**REBAR SPLICE CHART (4000 PSI CONCRETE)**

REBAR SIZE	MIN. SPLICE LENGTH	REBAR SIZE	MIN. SPLICE LENGTH
#3	24"	#8	80"
#4	32"	#9	90"
#5	40"	#10	102"
#6	48"	#11	113"
#7	70"		

11. **EXCAVATION AND FILL**  
A. SOIL FROM EXCAVATION SHALL NOT BE REUSED AS BACKFILL EXCEPT WITH OWNER'S APPROVAL AND IT IS DETERMINED TO BE FREE OF CONTAMINANTS AND MEETS THE REQUIREMENTS OF ITEM B.  
B. ALL FOUNDATION BACKFILL SHALL BE PROVIDED BY THE CONTRACTOR AND INSTALLED AS FOLLOWS:  
1) FILL SHALL BE SANDY CLAY WITH A MAXIMUM LIQUID LIMIT OF 40 AND A MAXIMUM PLASTICITY INDEX OF 18.  
2) FILL SHALL BE PLACED IN UNIFORM LAYERS NOT EXCEEDING 6" LOOSE THICKNESS.  
3) EACH LAYER SHALL BE COMPACTED TO A DRY DENSITY EQUAL TO 95% OF THE DRY DENSITY OBTAINED BY COMPACTION USING METHOD A OF ASTM D698.  
C. EXCAVATION SHALL BE PERFORMED WITH EXTREME CAUTION SO AS NOT TO DISTURB UNDERGROUND PIPING, CONDUITS, ETC.  
D. STANDING WATER IN EXCAVATIONS SHALL BE REMOVED BEFORE POURING CONCRETE. THE CONTRACTOR SHALL MAINTAIN DRAINAGE AWAY FROM FOUNDATIONS BOTH DURING AND AFTER CONSTRUCTION.  
E. CONCRETE SHALL BE PLACED AS SOON AS PRACTICAL AFTER COMPLETION OF EACH SHALLOW FOUNDATION EXCAVATION.  
F. EXISTING PAVING SHALL BE REPLACED IN KIND AFTER ALL NEW FOUNDATIONS ARE IN PLACE.  
G. FINISH GRADING FROM EXISTING GRADES SHALL BE IN A SMOOTH TRANSITION. ALL FINISH GRADING SHALL BE ACCOMPLISHED BY SLOPING TO DRAIN. REMOVE LOW SPOTS TO PREVENT PONDING OR RUN-OFF WATER.

**NOT FOR CONSTRUCTION**

**IESI COVINGTON PICKUP STATION**  
CONCRETE GENERAL NOTES  
CIVIL

COVINGTON, LA

6/08

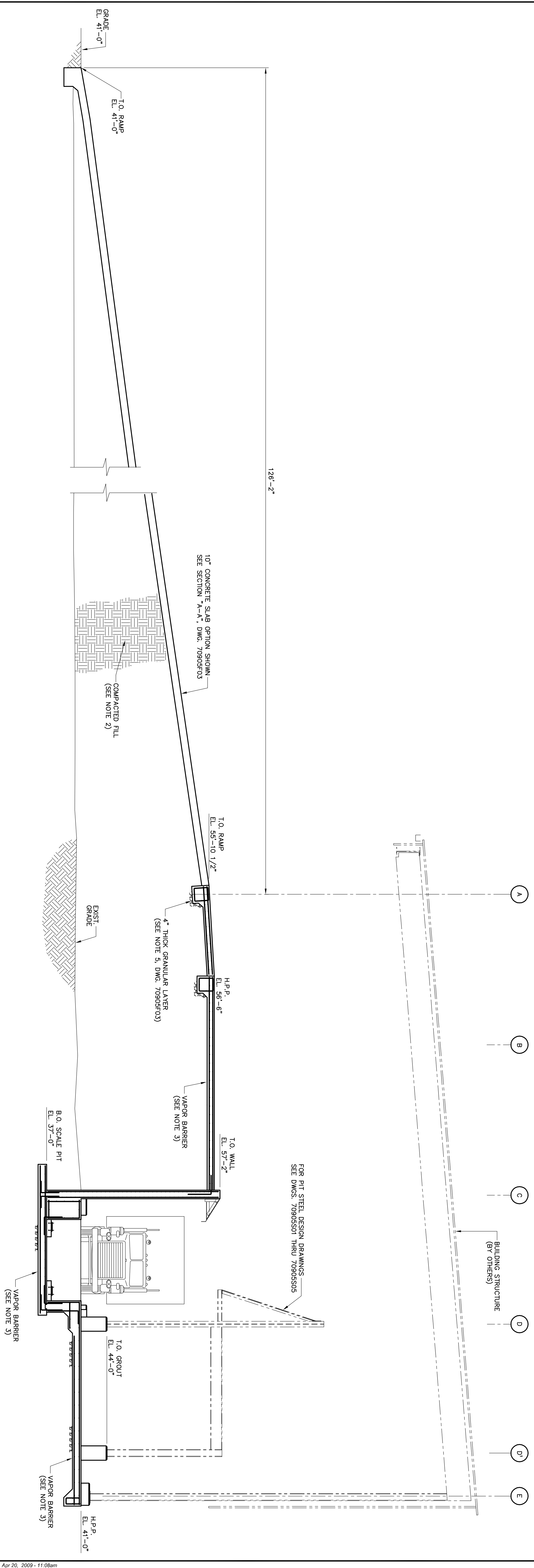


**GRSA-Sigma**  
CONSULTANTS AND ENGINEERS

REV.	DATE	DESCRIPTION	BY
0	4/09	ISSUED FOR BID	DMD

DESIGNED	DRAWN	CHECKED	APPROVED
CLG	DMD	JCA	DLS
DRAWING NUMBER	70905F01A		
REV.	0		

- NOTES:**
- FOR TITLE SHEET AND DRAWING INDEX SEE DRAWING 70905F01.
  - COMPACTED FILL SHALL BE CLAY HAVING A LIQUID LIMIT OF LESS THAN 40 AND PLASTICITY INDEX OF NOT MORE THAN 18. CLAY FILL SHALL BE PLACED IN 6" THICK LOOSE LIFTS AND UNFORMALLY COMPACTED TO AT LEAST 95 PERCENT OF THE STANDARD PROCTOR (ASTM D698) MAXIMUM DRY DENSITY FOR FOUNDATION BEARING AND AT LEAST 90 PERCENT OF STANDARD PROCTOR FOR GENERAL SITE FILL. SEE GEOTECHNICAL REPORT NO. GTL-19321(05-21291) BY GEOTECHNICAL TESTING LABORATORY, INC. DATED JULY 11, 2001 FOR SITE CONDITIONS AND RECOMMENDATIONS.
  - VAPOR BARRIER SHALL BE 6 MIL. POLYETHYLENE WITH JOINTS LAPPED NOT LESS THAN 6".



**TYPICAL SECTION THRU PICKUP STATION**  
SCALE: 3/16"=1'-0"

**NOT FOR CONSTRUCTION**

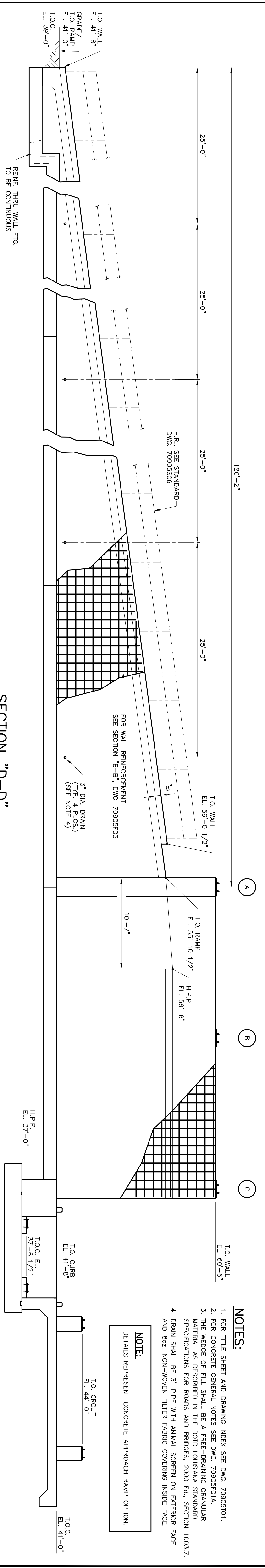
**IESI COVINGTON PICKUP STATION**  
TYPICAL FOUNDATION SECTION  
CIVIL

COVINGTON, LA 6/08

**GRSA-SIGMA**  
CONSULTANTS AND ENGINEERS

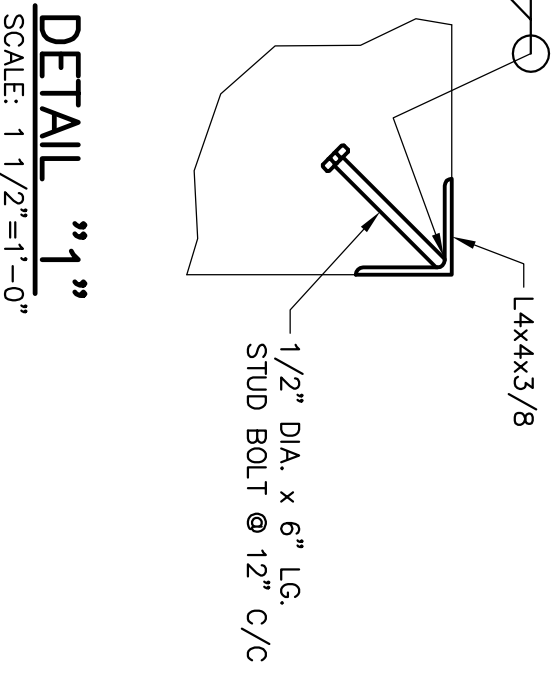
DESIGNED	CJG	DRAWN	DMD	CHECKED	JCA	APPROVED	DLS
REVISED	0	DATE	4/09	ISSUED FOR BID		REVISIONS	
DRAWING NUMBER		70905F02		REV.		0	



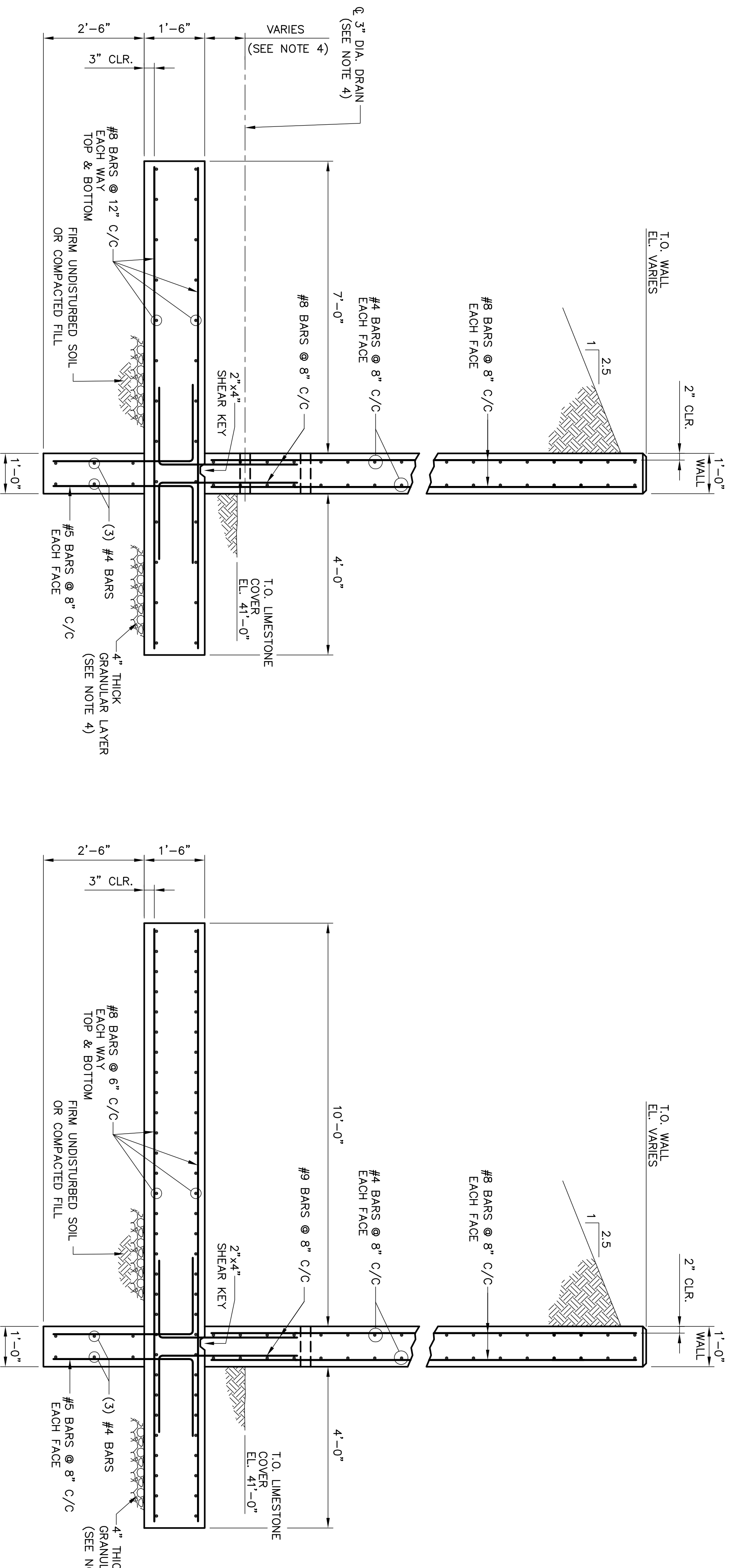


**SECTION "D-D"**  
 SCALE: 3/16"=1'-0"  
 REF. DWG. 70905F01

- NOTES:**
1. FOR TITLE SHEET AND DRAWING INDEX SEE DWG. 70905F01.
  2. FOR CONCRETE GENERAL NOTES SEE DWG. 70905F01A.
  3. THE WEDGE OF FILL SHALL BE A FREE-DRAINING GRANULAR MATERIAL AS DESCRIBED IN THE DOTD LOUISIANA STANDARD SPECIFICATIONS FOR ROADS AND BRIDGES, 2000 Ed., SECTION 1003.7.
  4. DRAIN SHALL BE 3" PIPE WITH ANNUAL SCREEN ON EXTERIOR FACE AND 8022 NON-WOVEN FILTER FABRIC COVERING INSIDE FACE.
- NOTE:**  
 DETAILS REPRESENT CONCRETE APPROACH RAMP OPTION.

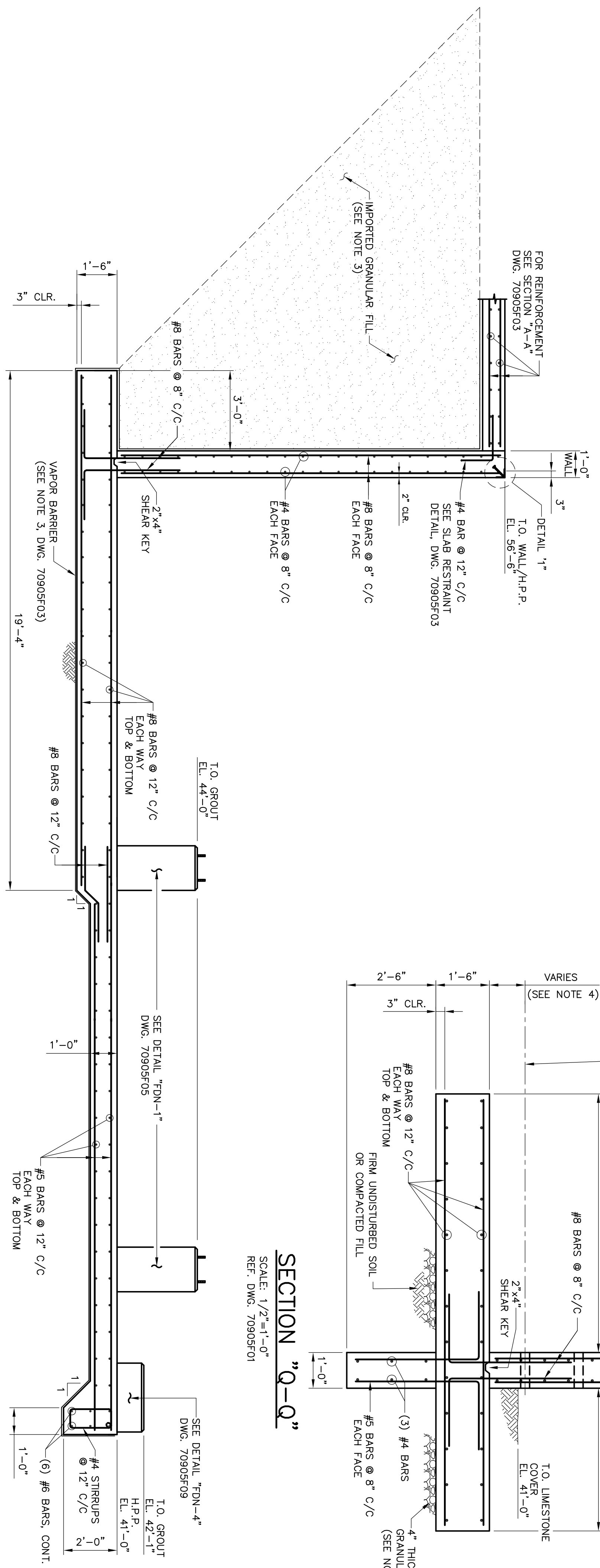


**DETAIL "1-1"**  
 SCALE: 1 1/2"=1'-0"



**SECTION "Q-Q"**  
 SCALE: 1/2"=1'-0"  
 REF. DWG. 70905F01

**SECTION "R-R"**  
 SCALE: 1/2"=1'-0"  
 REF. DWG. 70905F01



**SECTION "E-E"**  
 SCALE: 3/8"=1'-0"  
 REF. DWG. 70905F01

**NOT FOR CONSTRUCTION**

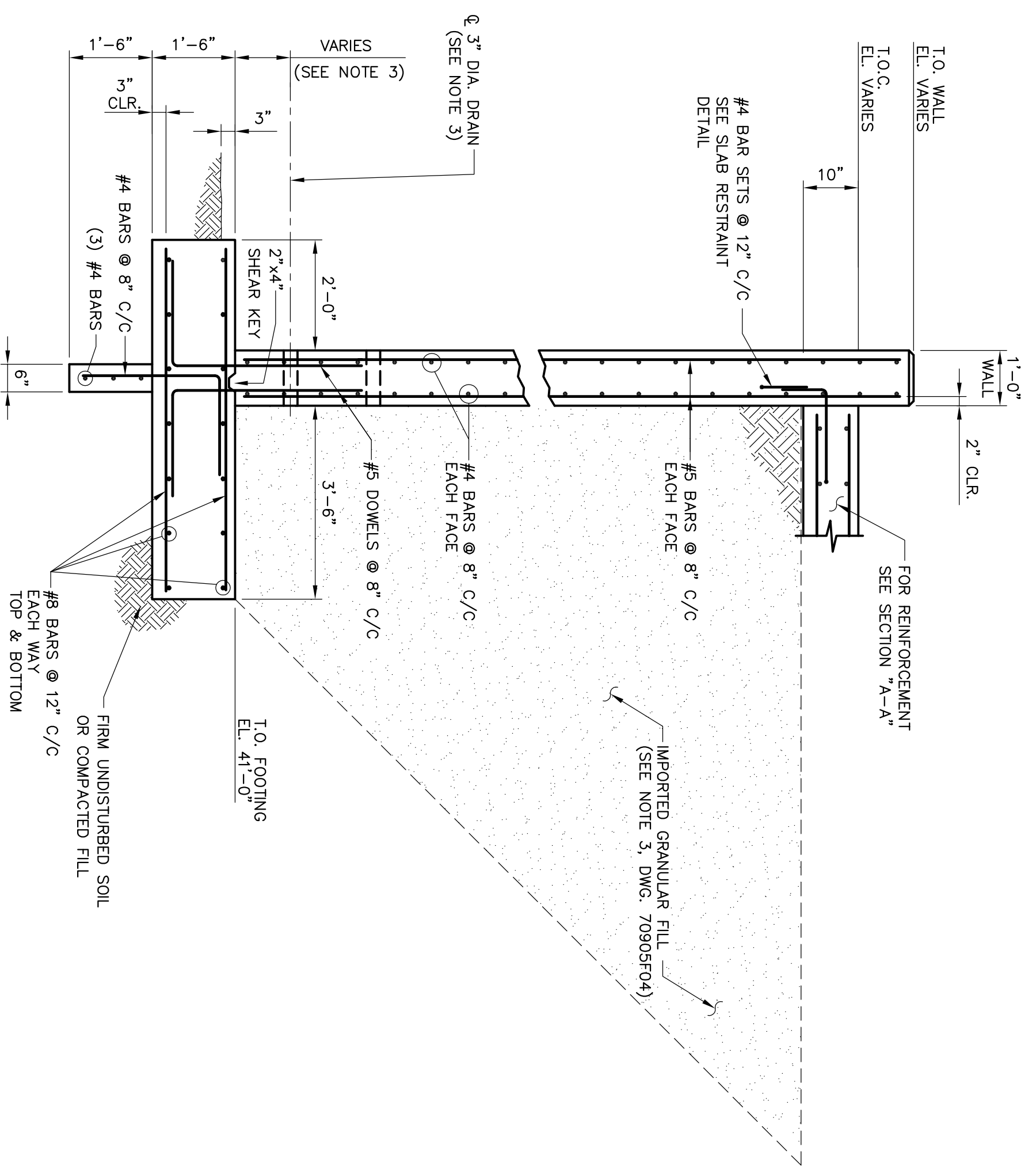
**IESI COVINGTON PICKUP STATION**  
 ELEVATION AND SECTIONS  
 CIVIL

COVINGTON, LA 6/08

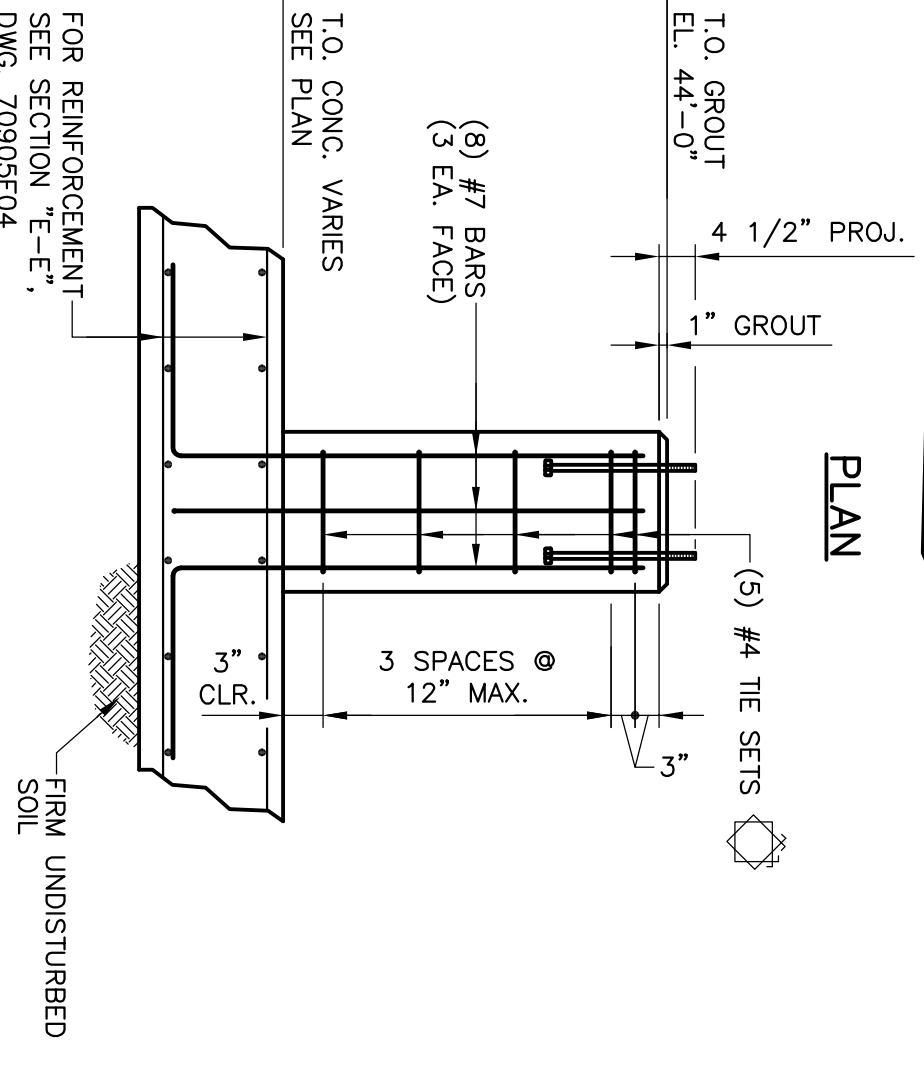
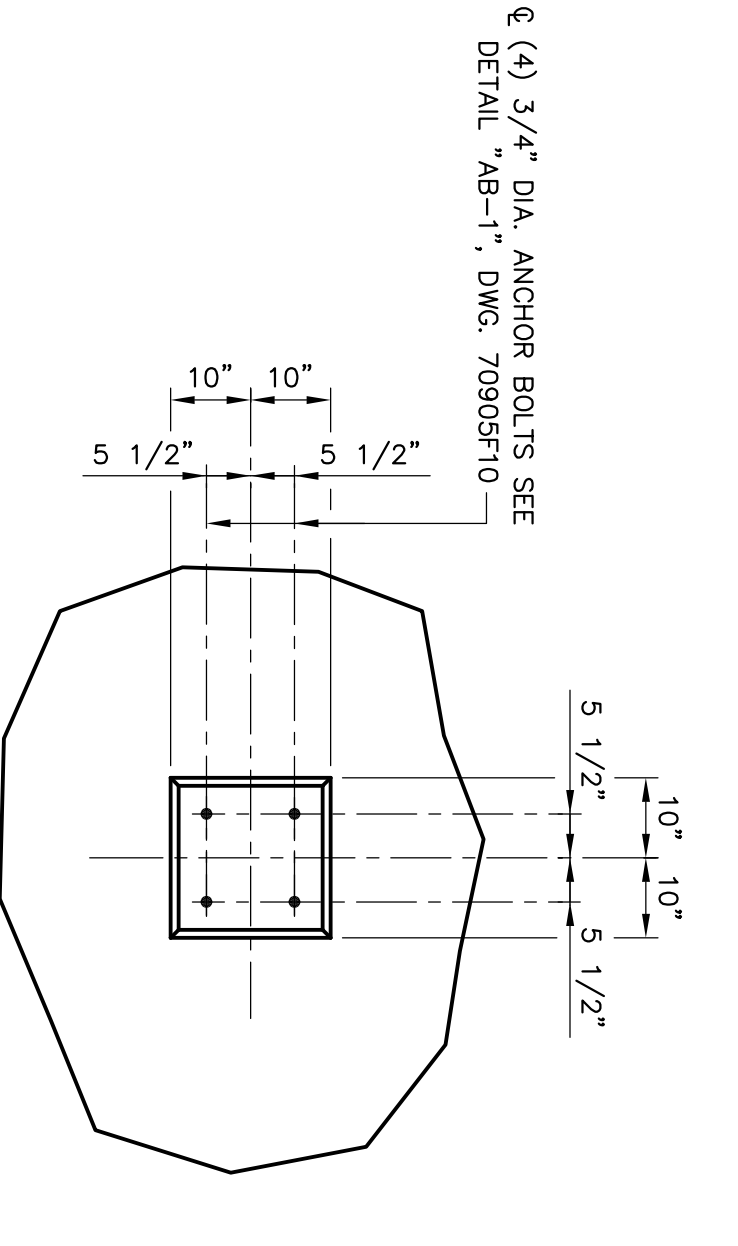
**GRSA-Sigma**  
 CONSULTANTS AND ENGINEERS

DESIGNED	CJG	DRAWN	DMD	CHECKED	JCA	APPROVED	DLS
REV.	DATE	ISSUED FOR BID	DESCRIPTION	REVISIONS			
0	4/09						

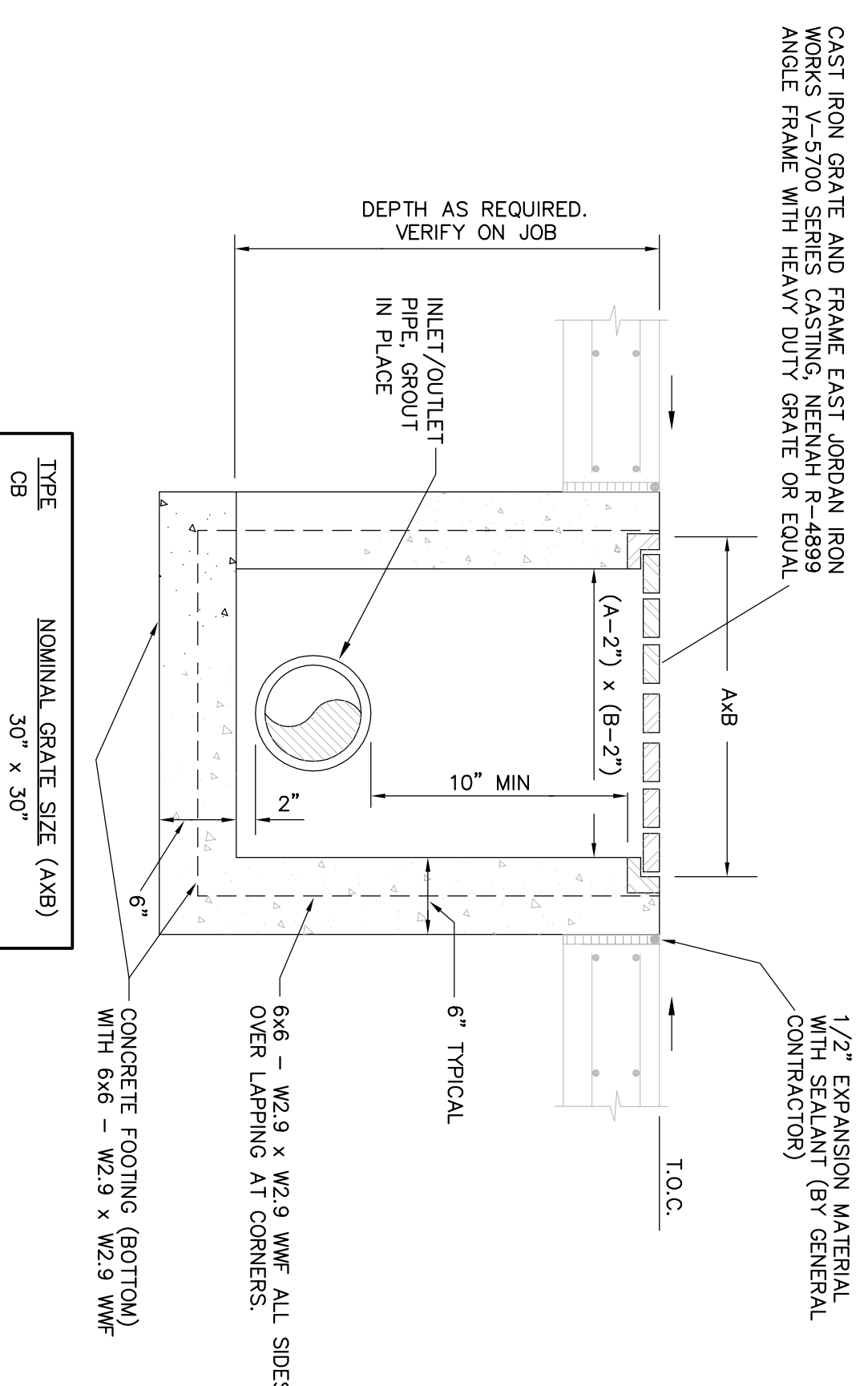
DRAWING NUMBER: 70905F04



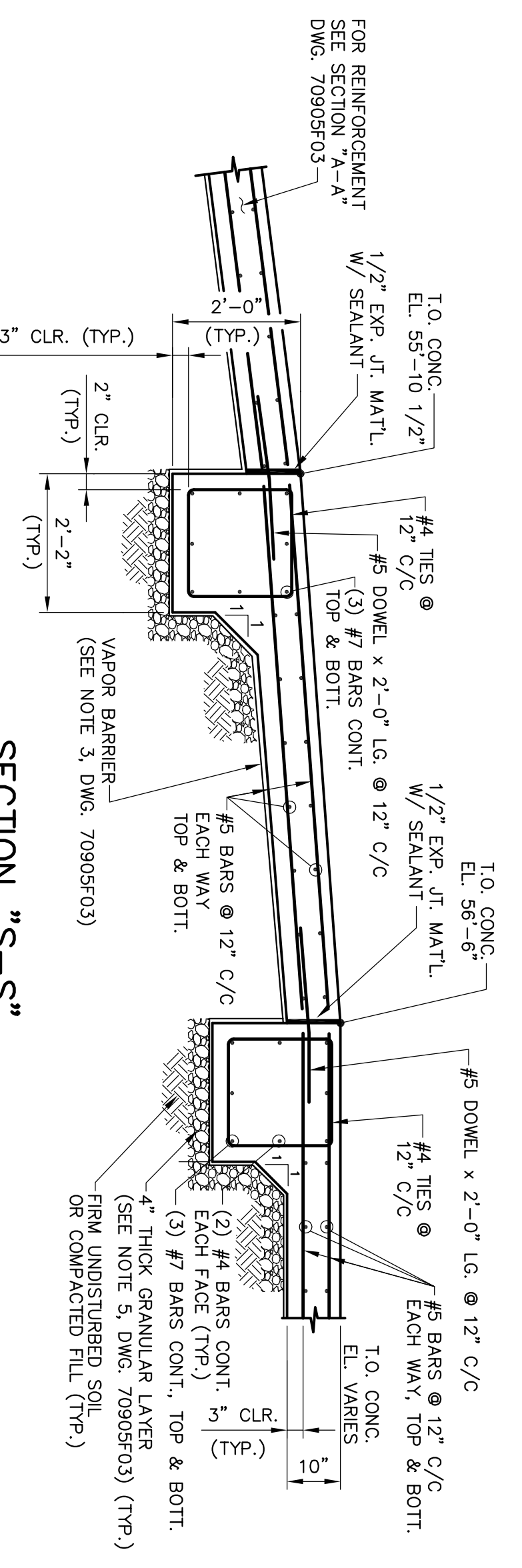
**SECTION "H-H"**  
SCALE: 1/2"=1'-0"  
REF. DWG. 70905F01



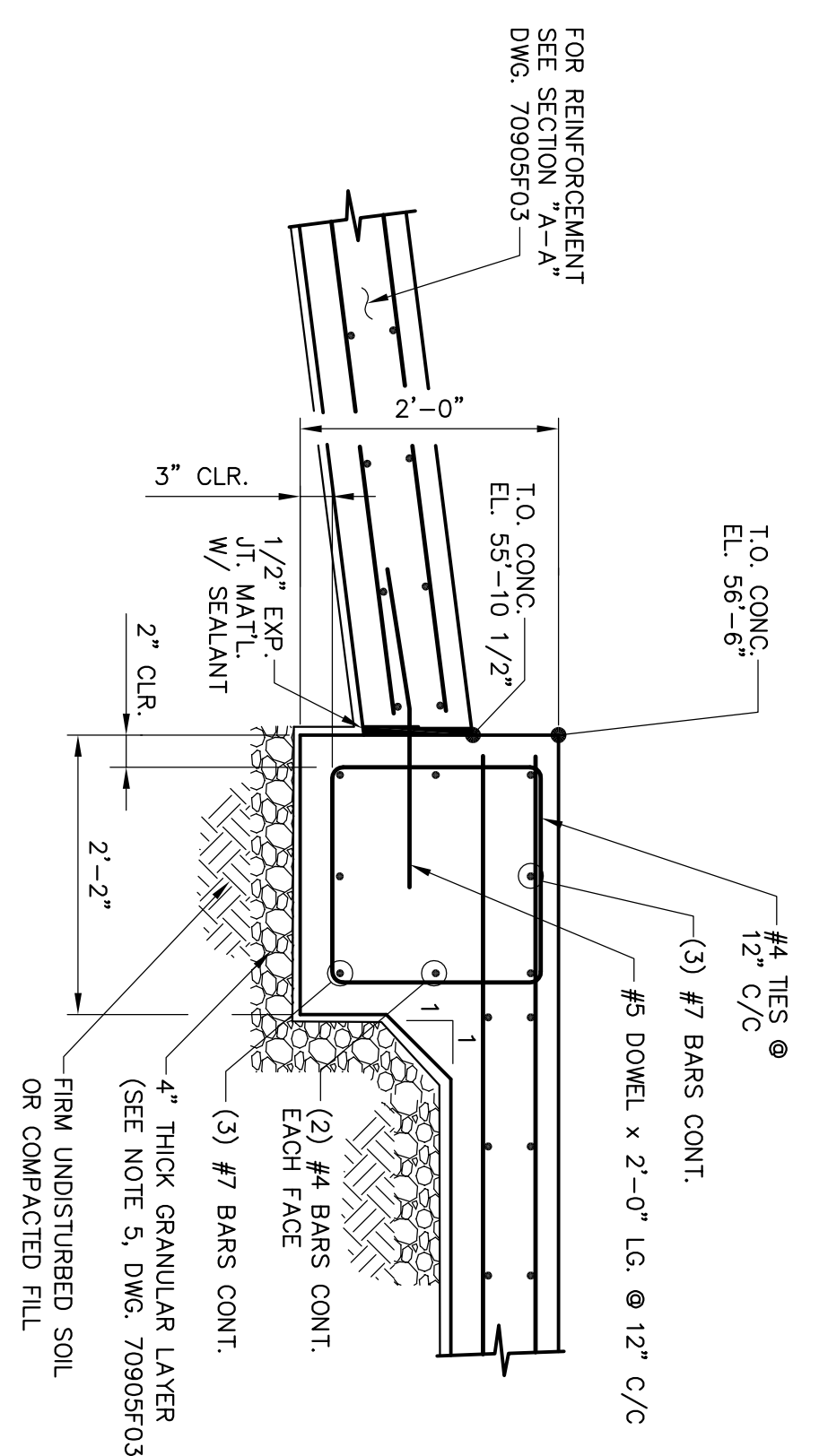
**SECTION "E-E"**  
SCALE: 1/2"=1'-0"  
REF. DWG. 70905F04



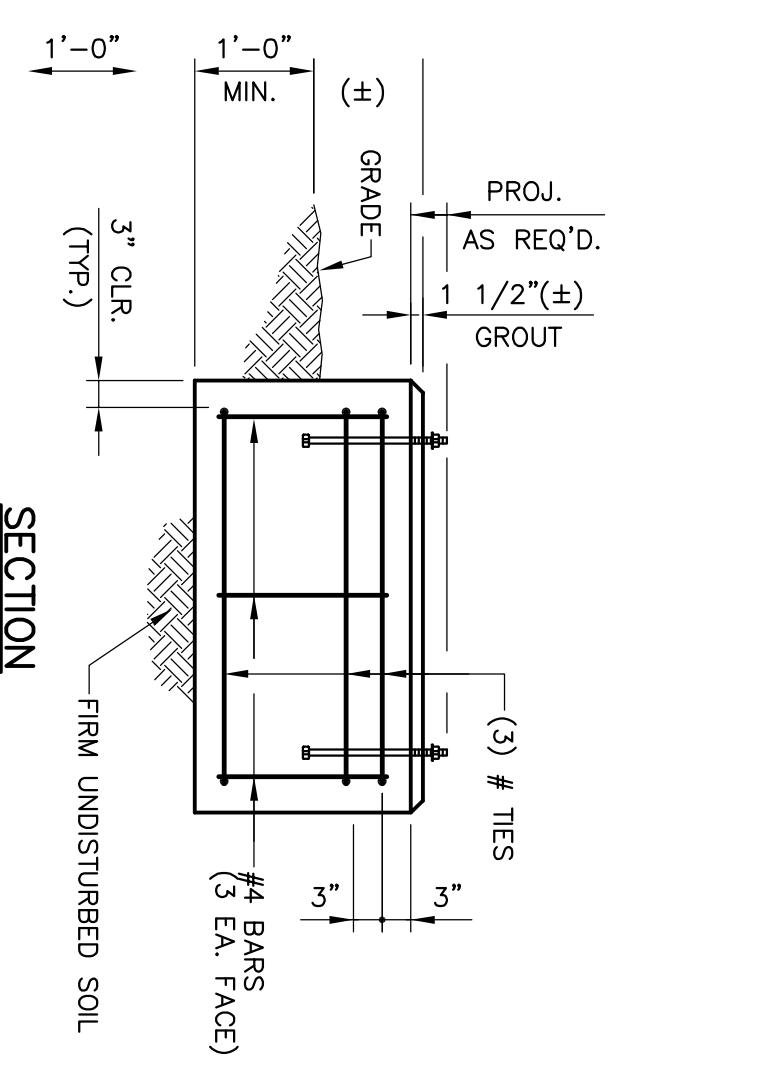
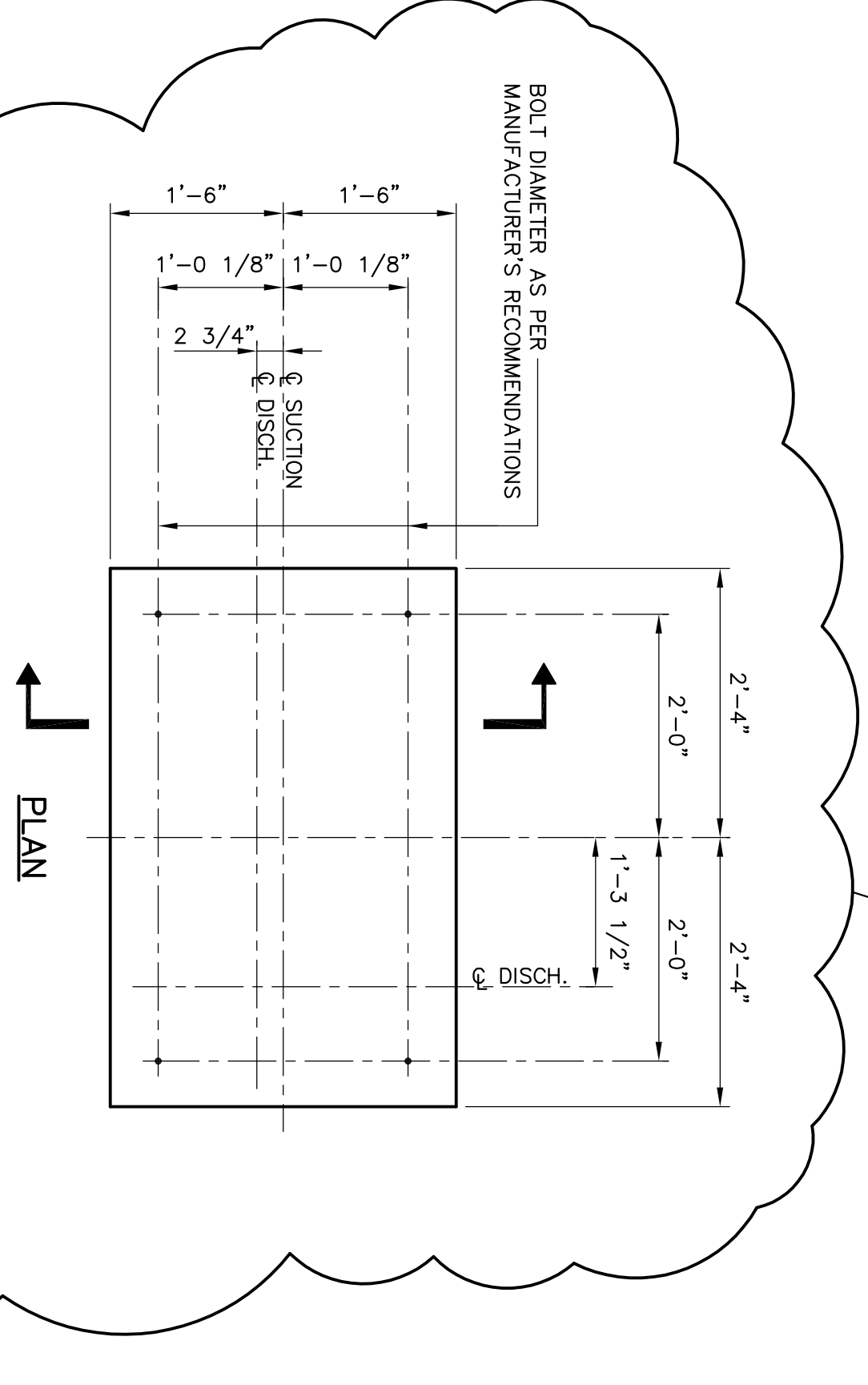
**TYP. CATCH BASIN DETAIL**  
(2 REVD.)  
NOT TO SCALE  
REF. DWG. 70905F01



**SECTION "S-S"**  
SCALE: 1/2"=1'-0"  
REF. DWG. 70905F01



**SECTION "T-T"**  
SCALE: 3/4"=1'-0"  
REF. DWG. 70905F01



**CHOPPER PUMP FDN. DETAIL**  
SCALE: 3/4"=1'-0"  
REF. DWG. MS01 FOR LOC. & ORIENTATION

- NOTES:**
1. FOR TITLE SHEET AND DRAWING INDEX SEE DRAWING 70905T01.
  2. FOR CONCRETE GENERAL NOTES SEE DRAWING 70905F01A.
  3. PUMP SHALL BE 3" PIPE WITH ANIMAL SCREEN ON EXTERIOR FACE AND 8oz. NON-WOVEN FILTER FABRIC COVERING INSIDE FACE.

**NOTE:**  
DETAILS REPRESENT CONCRETE APPROACH RAMP OPTION.

**NOT FOR CONSTRUCTION**

**IESI COVINGTON PICKUP STATION**  
LIFT STATION & MISC. DETAILS  
CIVIL

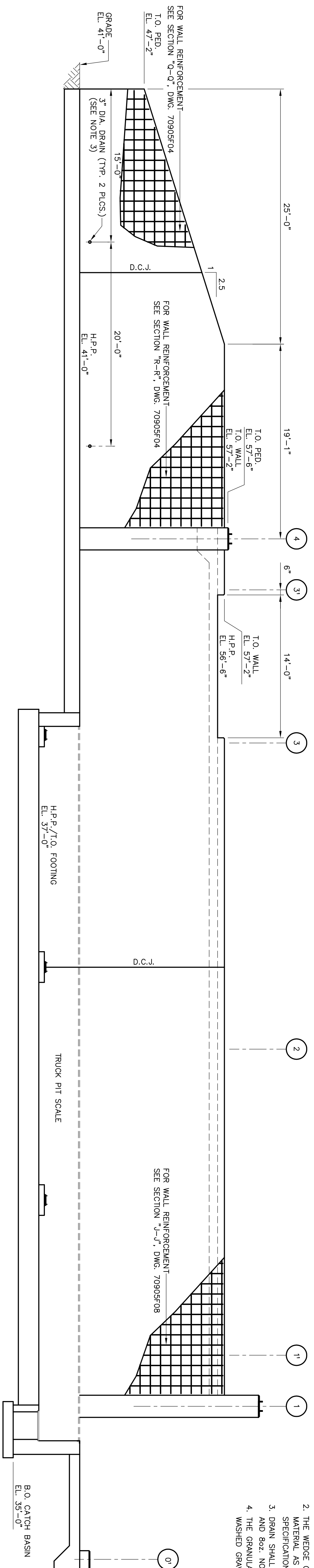
COVINGTON, LA

6/08

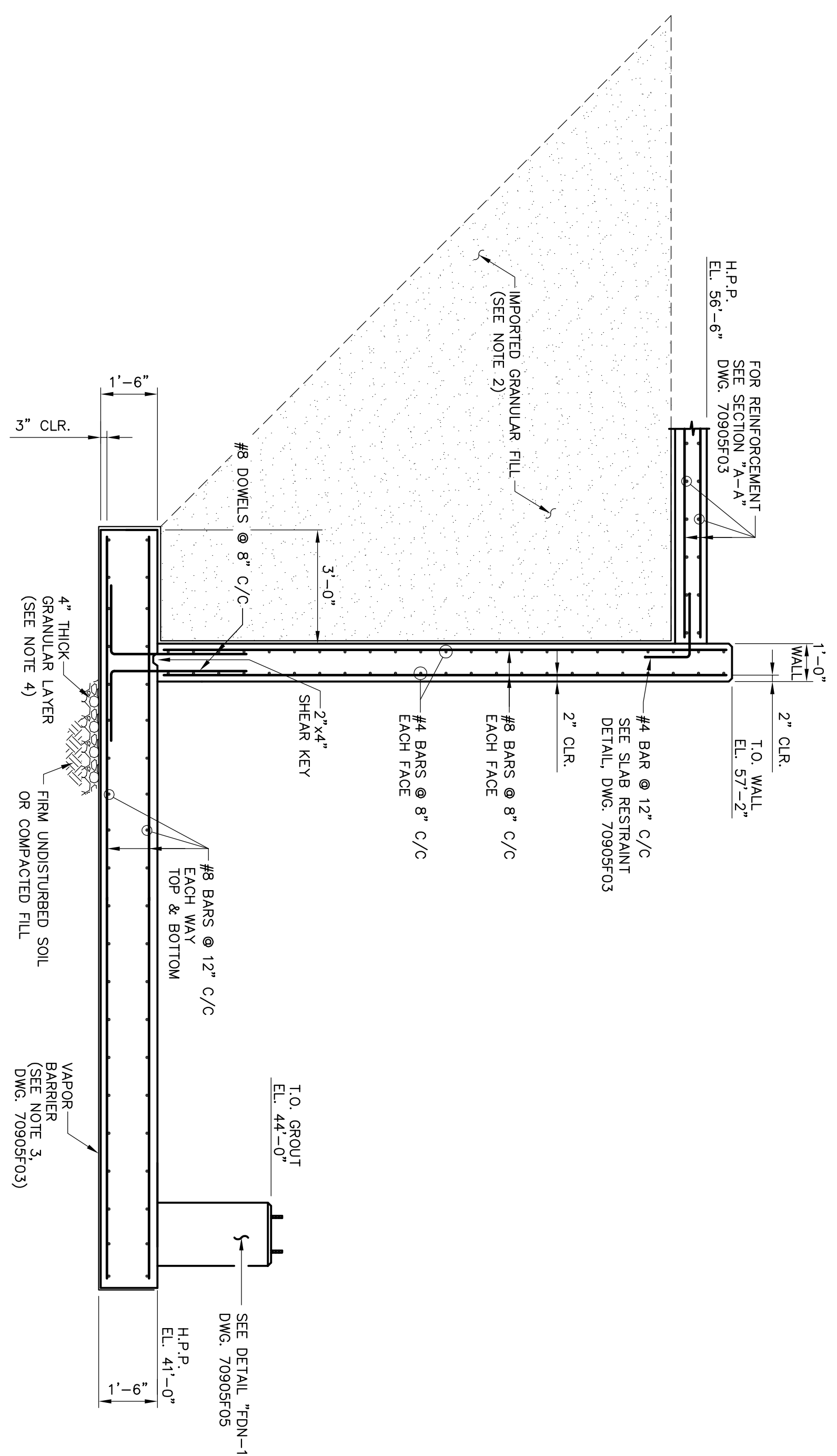


DESIGNED: CJC  
DRAWN: DMD  
CHECKED: JCA  
APPROVED: DLS  
DRAWING NUMBER: 70905F05

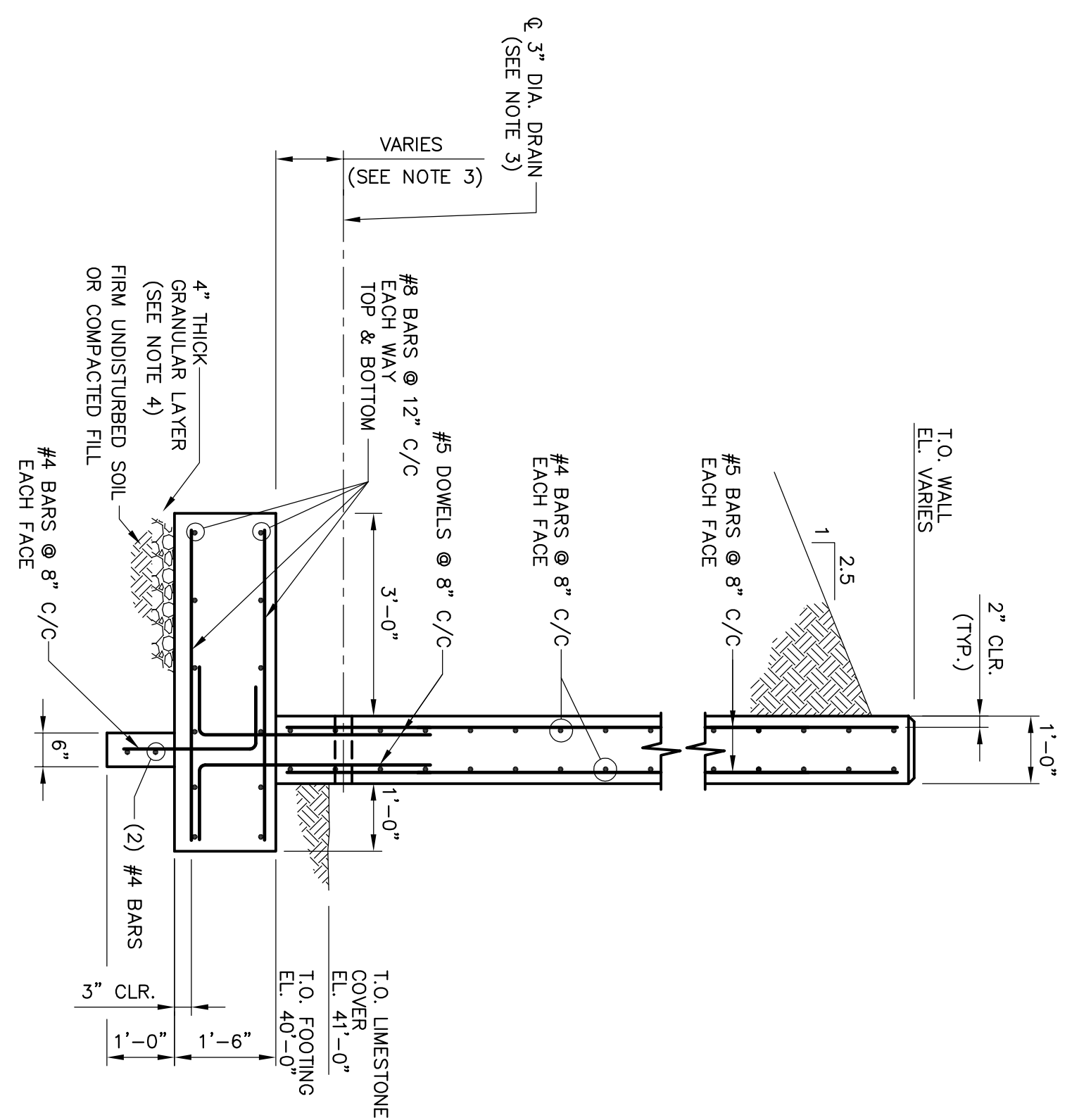
REV.	DATE	DESCRIPTION
0	4/09	ISSUED FOR BID
1	7/11	REVISED



**SECTION "M-M"**  
SCALE: 3/16"=1'-0"  
REF. DWG. 70905F01



**SECTION "K-K"**  
SCALE: 3/8"=1'-0"  
REF. DWG. 70905F01



**SECTION "P-P"**  
SCALE: 1/2"=1'-0"  
REF. DWG. 70905F01

- NOTES:**
1. FOR TITLE SHEET AND DRAWING INDEX SEE DRAWING 70905T01.
  2. THE WEDGE OF FILL SHALL BE A FREE-DRAWING GRANULAR MATERIAL AS DESCRIBED IN THE DOTD LOUISIANA STANDARD SPECIFICATIONS FOR ROADS AND BRIDGES, 2000 ED., SECTION 1003.7.
  3. DRAIN SHALL BE 3" PIPE WITH ANNUAL SCREEN ON EXTERIOR FACE AND 8oz. NON-WOVEN FILTER FABRIC COVERING INSIDE FACE.
  4. THE GRANULAR LAYER SHALL BE 4" THICK UNIFORMLY GRADED WASHED GRAVEL, 3/4" SIZE.

**NOT FOR CONSTRUCTION**

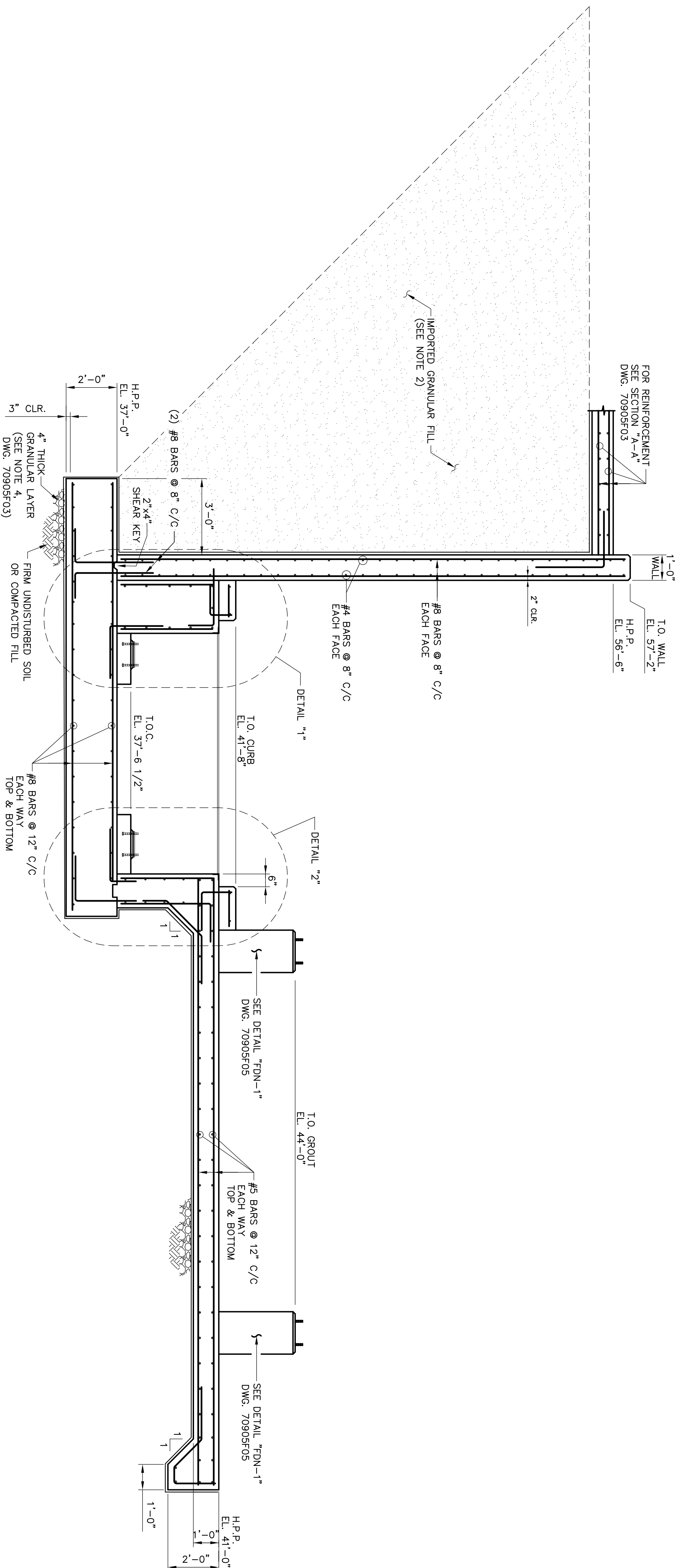
**IESI COVINGTON PICKUP STATION**  
SECTIONS AND DETAILS  
CIVIL

COVINGTON, LA 6/08

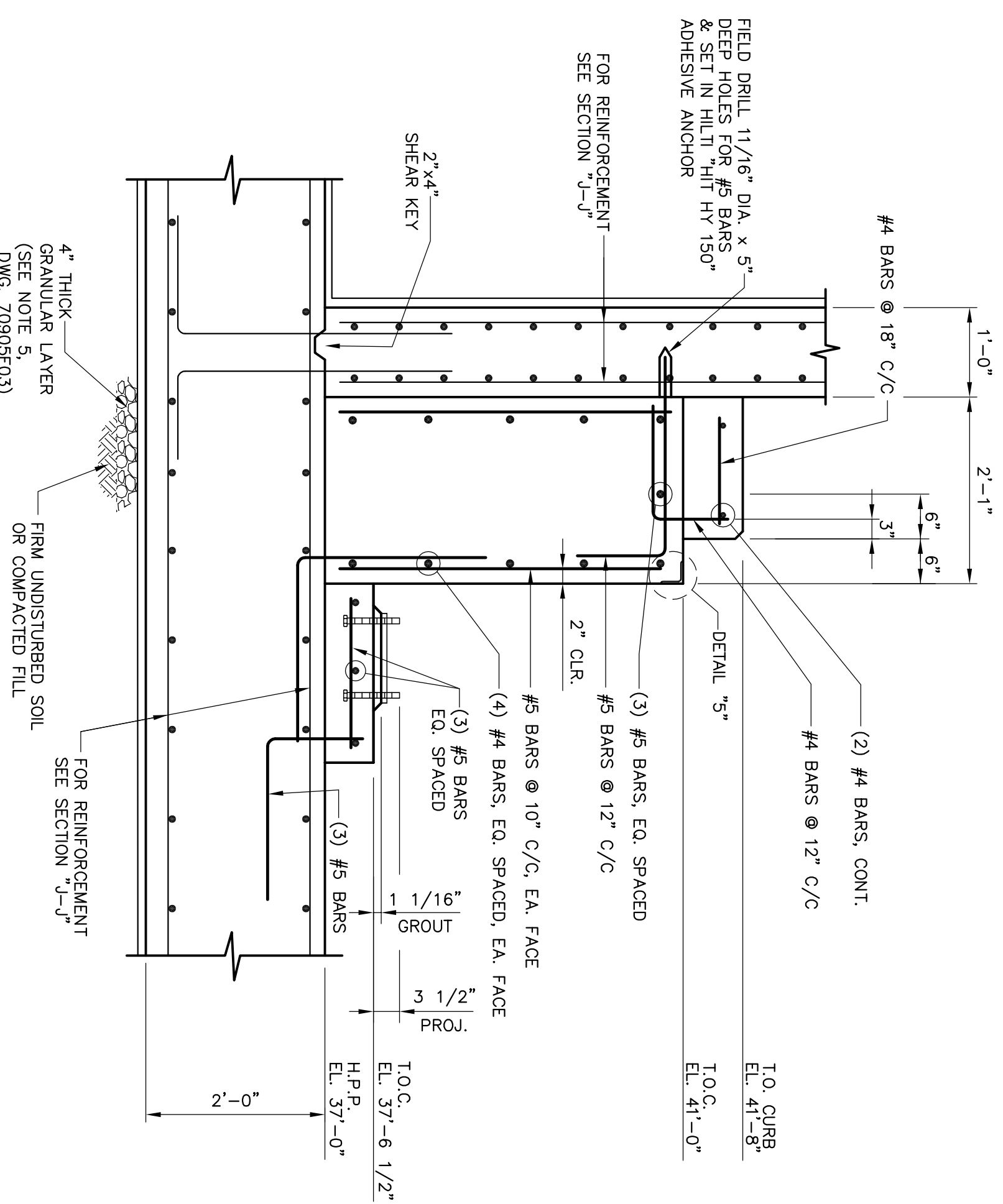


DESIGNED	CJG	DRAWN	DMD	CHECKED	JCA	APPROVED	DLS
ISSUED FOR BID	4/09	REVISIONS	0	4/09	ISSUED FOR BID	DESCRIPTION	REVISIONS
DMD	BY						
DRAWING NUMBER	70905F06	REV.	0				

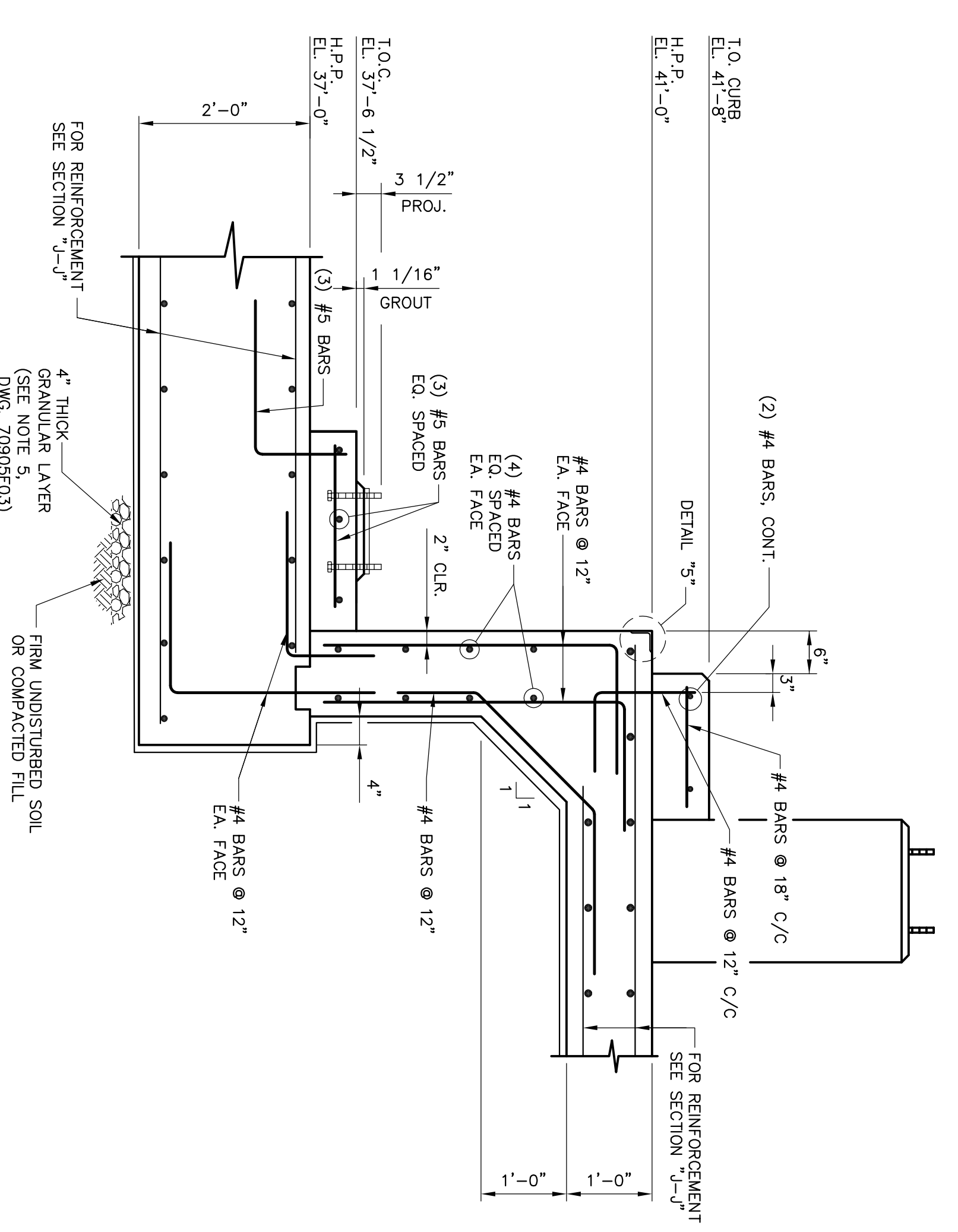




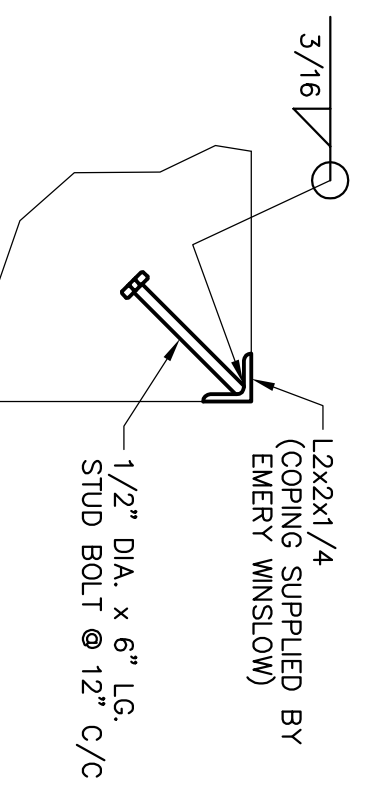
**SECTION "J-J"**  
SCALE: 3/8"=1'-0"  
REF. DWG. 70905F01



**DETAIL "1"**  
SCALE: 3/4"=1'-0"



**DETAIL "2"**  
SCALE: 3/4"=1'-0"



**DETAIL "5"**  
SCALE: 1 1/2"=1'-0"

**NOT FOR CONSTRUCTION**

**IESI COVINGTON PICKUP STATION**  
SECTIONS & DETAILS  
CIVIL

REV.	DATE	ISSUED FOR BID	DESCRIPTION	REVISIONS
0	4/09			

DESIGNED	DRAMA	CHECKED	APPROVED
DRAWN	DMD	JCA	DLS
DRAWING NUMBER	70905F08		
DATE	6/08		



- NOTES:**
1. FOR TITLE SHEET AND DRAWING INDEX SEE SHEET 1-01.
  2. FOR CONCRETE GENERAL NOTES SEE DWG. 70905F01A.





