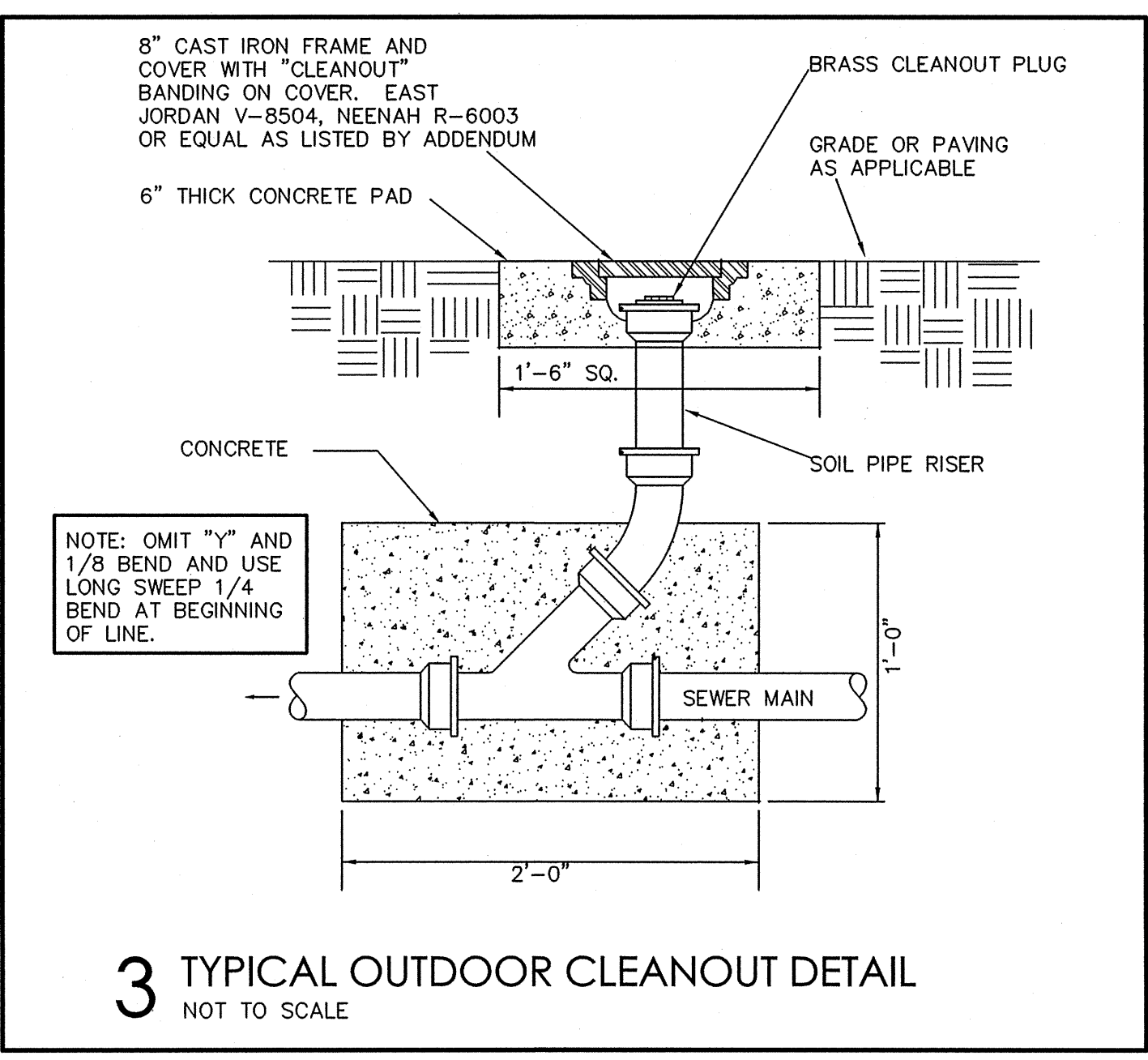


**2 KEYNOTES:**

- ① ROUTE DIFFERENT DISCHARGE PIPING TO DETENTION POND. PROVIDE SCREEN ON END OF DISCHARGE PIPING.
- ② RE: 3M02 AND 5M02 FOR LIFT STATION DETAILS.
- ③ PROVIDE GATE VALVE IN UNDERGROUND BOX.
- ④ WATER WELL SHALL CONSIST OF PUMPS P-3 AND P-4, AS WELL AS 220 GALLON CAPACITY GALVANIZED TANK WITH BASE AND SUPPORT. PUMP P-4 SHALL BE STENNER 45 SERIES SINGLE HEAD ADJUSTABLE OUTPUT.

**1 SITE PLAN**  
SCALE: 1"=40'



**3 TYPICAL OUTDOOR CLEANOUT DETAIL**  
NOT TO SCALE

3-12-08  
 STATE OF LOUISIANA  
 DONALD TODD DRUMMOND  
 REG. NO. 28296  
 REGISTERED PROFESSIONAL ENGINEER  
 IN MECHANICAL ENGINEERING  
 D. J. Drummond

**ISSUED FOR CONSTRUCTION**

DESIGN CONSULTANT  
**domain design**  
 CONSULTANTS AND ENGINEERS

**GRSA-SIGMA**  
 CONSULTANTS AND ENGINEERS

NEW OFFICE/ WAREHOUSE BUILDING FOR  
**IESI WASTE TRANSFER STATION**  
 COVINGTON LA 70435  
 HWY 25

THESE DRAWINGS ARE THE PROPERTY OF DONALD TODD DRUMMOND ARCHITECTURE AND ARE NOT TO BE REPRODUCED IN WHOLE OR IN PART. THEY ARE ONLY TO BE USED FOR THE PROJECT AND SITE SPECIFICALLY IDENTIFIED HEREIN.

SCALES STATED HEREON ARE VALID ON THE ORIGINAL DRAWINGS ONLY. CONTRACTOR SHALL CAREFULLY REVIEW ALL DIMENSIONS AND CONDITIONS SHOWN AND REPORT TO THE ARCHITECT ANY ERRORS, INCONSISTENCIES OR OMISSIONS DISCOVERED.

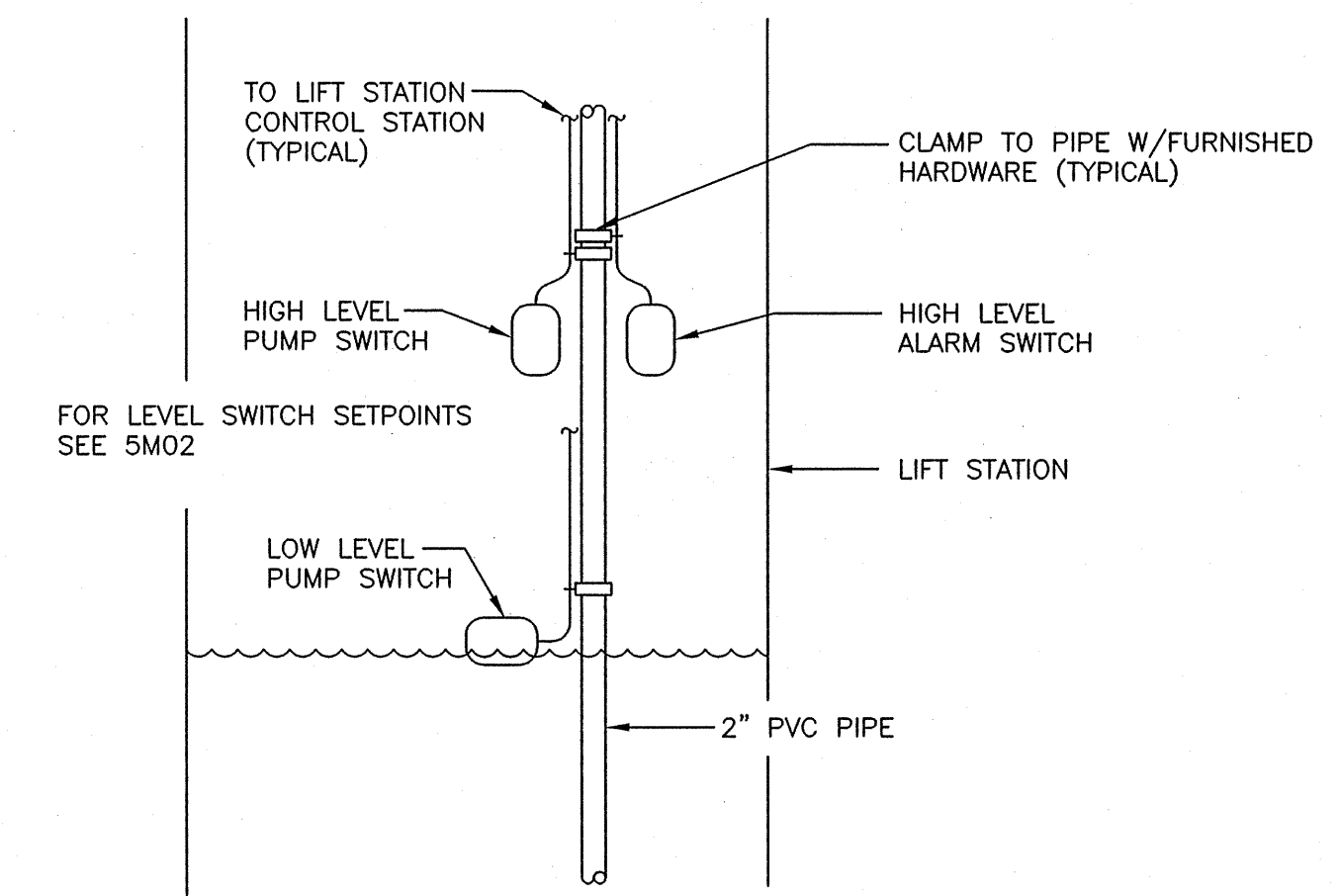
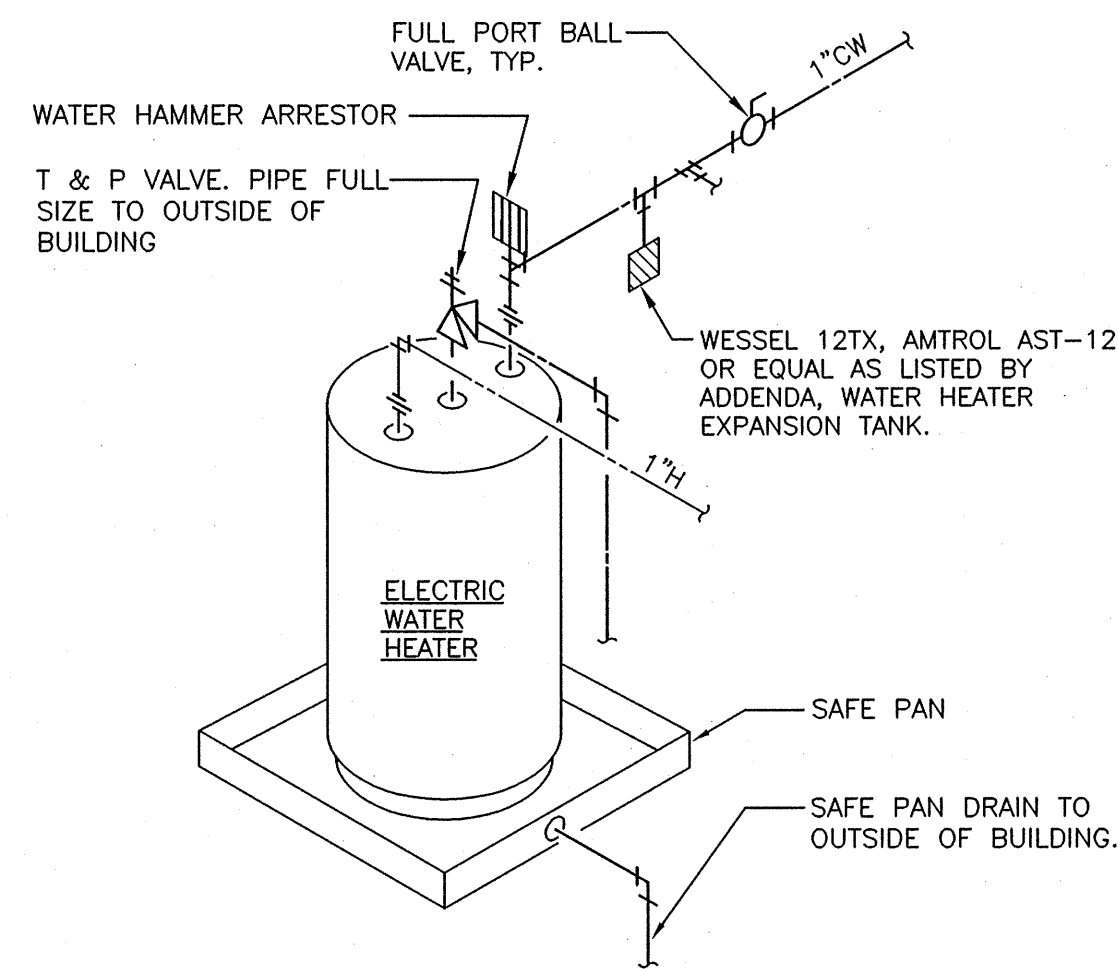
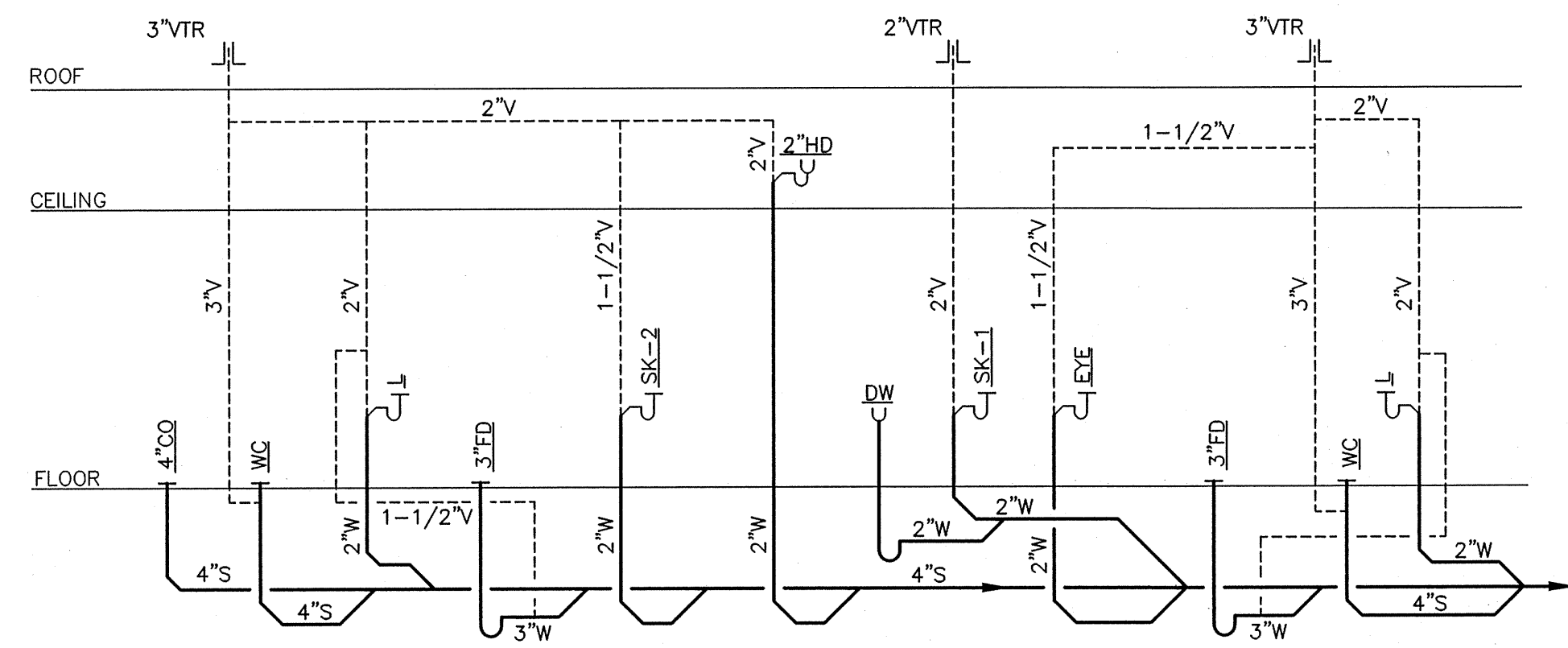
THESE PLANS WERE PREPARED IN THIS OFFICE UNDER OUR PERSONAL SUPERVISION, AND TO THE BEST OF OUR KNOWLEDGE CONFORM WITH STATE AND LOCAL CODES. WE WILL GENERALLY ADMINISTER CONSTRUCTION.

PROJ. #	REVISIONS
007-0033	

DATE  
 12 MAR 2008  
 SHEET

MS01





EW: 50 GALLON STORAGE CAPACITY WITH 4.5 KW, 240V, 1 PHASE ELEMENT.

EW: 50 GALLON STORAGE CAPACITY WITH 4.5 KW, 240V, 1 PHASE ELEMENT.

EW: 50 GALLON STORAGE CAPACITY WITH 4.5 KW, 240V, 1 PHASE ELEMENT.

**1 PLUMBING RISER DIAGRAM**

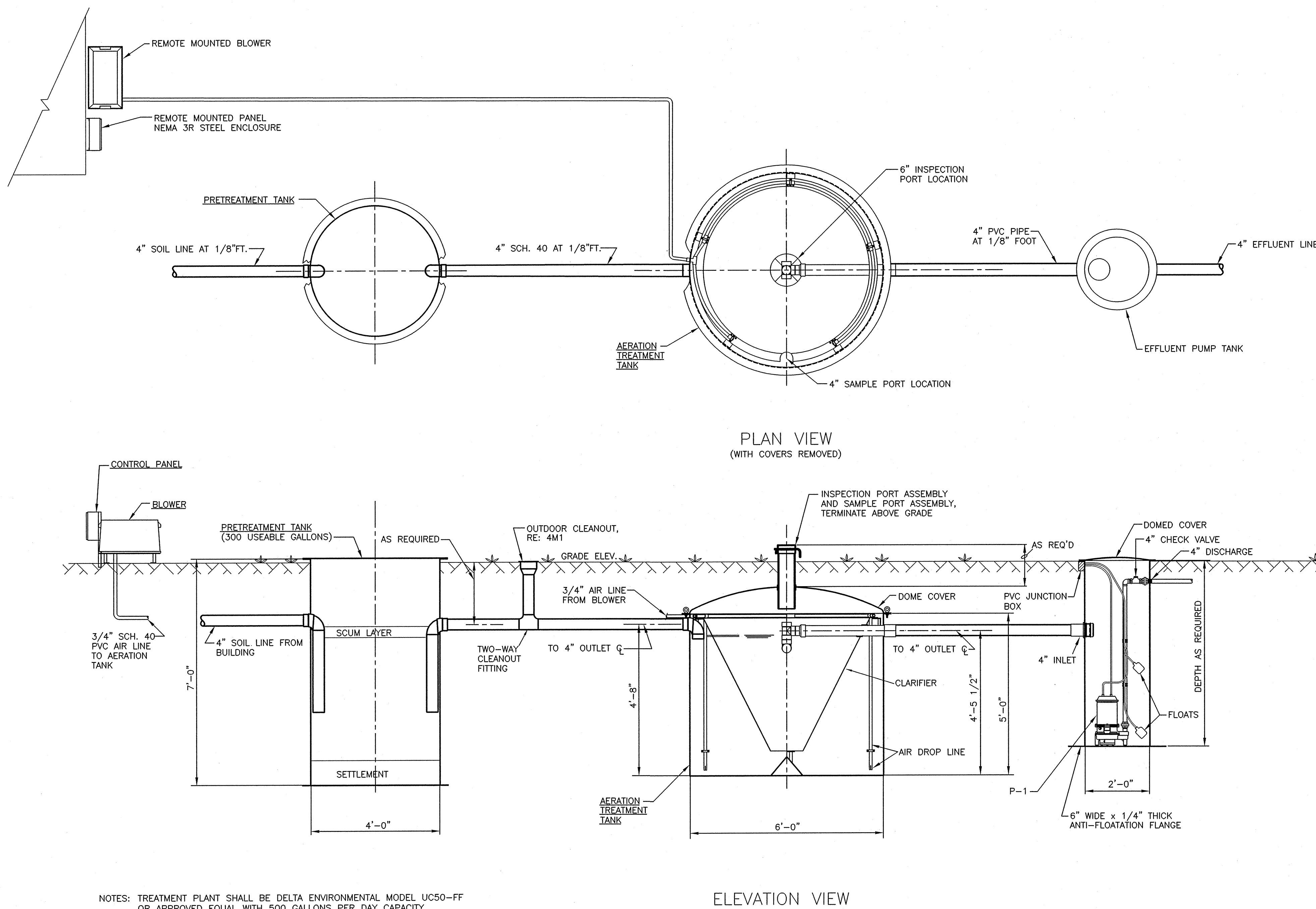
NOT TO SCALE

**2 ELECTRIC WATER HEATER DETAIL**

NOT TO SCALE

**3 LEVEL SWITCH DETAIL**

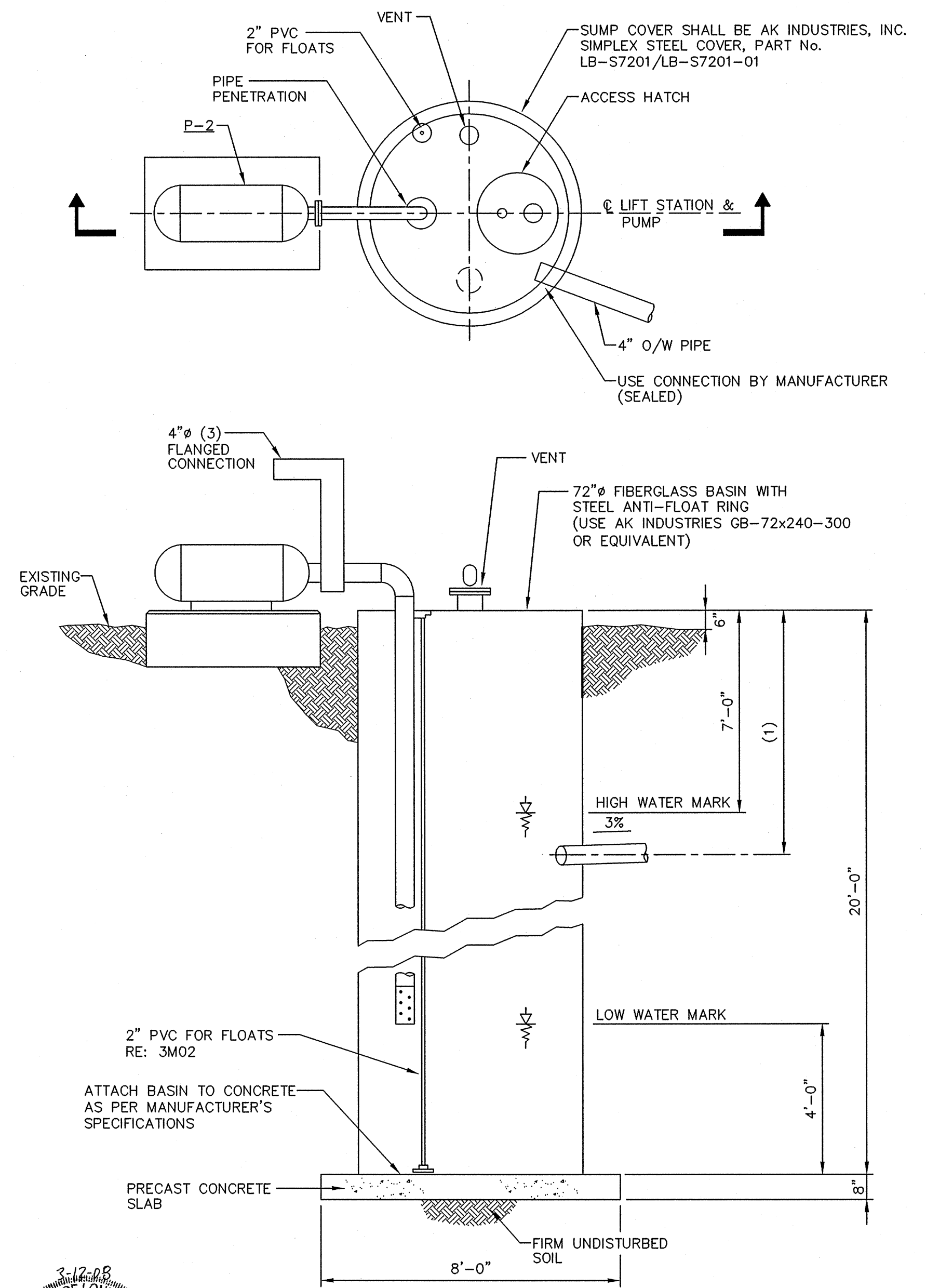
NOT TO SCALE



PLAN VIEW  
(WITH COVERS REMOVED)

ELEVATION VIEW

NOTES: TREATMENT PLANT SHALL BE DELTA ENVIRONMENTAL MODEL UC50-FF OR APPROVED EQUAL WITH 500 GALLONS PER DAY CAPACITY.



- NOTES:
- (1) INLET PIPING. VERIFY DEPTH ON JOB PRIOR TO CONSTRUCTION. TYPICAL OF 2.
  - (2) RE: 1MS01 FOR INLET PIPING.
  - (3) PROVIDE SHUT-OFF VALVE AND 4\"/>

**ISSUED FOR CONSTRUCTION**

**4 SEWAGE TREATMENT PLANT SYSTEM DETAIL**

1/2\"/>

**5 TYPICAL LIFT STATION DETAIL**

NOT TO SCALE

DESIGN CONSULTANT  
**domain design**  
CONSULTANTS AND ENGINEERS

**GRSA-SIGMA**  
CONSULTANTS AND ENGINEERS

NEW OFFICE/ WAREHOUSE BUILDING FOR  
**IESI WASTE TRANSFER STATION**

HWY 25  
COVINGTON LA 70435

PROJ. # C07-0033

REVISIONS

DATE  
12 MAR 2008

SHEET  
M02

CONDENSING UNITS, AIR COOLED												
DESIGNATION	CAPACITY BTUH	SUCTION TEMP DEG. F	AMBIENT AIR TEMP. DEG. F	NO. COMP. AND REFRIG. CIRCUITS	ELECTRICAL DATA				REFRIG LINE SIZES R-22		SEER	REMARKS
					VOLTS	PH.	F.L.A.	RL	RS			
CU	48,000	45	95	1	240	1	20.0	3/8	1 1/8	13	SEE SPECIFICATIONS	

FAN COIL COMBINATION UNITS, DIRECT EXPANSION - ELECTRIC HEAT														
DESIGNATION	SUPPLY CFM	O.A. CFM	EST. EXT S.P. IN. W.G. *	COIL FACE AREA IN. SQ. FT.	COOLING-BTUH-ARI-210 SENS.		FAN MOTOR			HEATING COIL		REMARKS		
					TOTAL	H.P.	VOLTS	PH	K.W. MIN.	K.W. MAX.	VOLTS		PH	
FCU	1800	245	0.4	6.2	32,600	48,000	1/2	240	1	7	10	208	1	SEE SPECS

\* FILTERS ASSUMED PART OF INTERNAL STATIC PRESSURE. UNITS TO HAVE SINGLE POINT ELECTRICAL CONNECTION.

FANS													
DESIGNATION	CFM	S.P. IN. W.G.	FRPM	WHEEL DIA. INCHES	DRIVE	WHEEL TYPE	MAX. SONES	ELECTRICAL DATA			STARTERS		REMARKS
								H.P.	VOLTS	PH	TYPE	LOCATION	
F-1	3600	0.25	1164	21	BELT	PROP	20	1/3	120	1	SW	SHOP	SEE SPECS, [1]

[1] FAN SHALL BE GREENHECK MODEL SBE, OR APPROVED EQUAL, WITH GRAVITY ACTUATED DAMPER.

CEILING DIFFUSERS					
DIFFUSER TYPE	NECK SIZE	MAX DESIGN CFM	CONNECTING DUCT SIZE	MAX. PRESSURE DROP FOR SPIN TAP 25' STRAIGHT FLEXIBLE DUCT AND DIFFUSER COMBINATION	REMARKS
A	6" DIA.	100	6" DIA.	.15	SEE SPECS.
B	8" DIA.	200	8" DIA.	.15	SEE SPECS.
C	10" DIA.	350	10" DIA.	.15	SEE SPECS.
D	12" DIA.	500	12" DIA.	.15	SEE SPECS.
E	14" DIA.	650	14" DIA.	.15	SEE SPECS.

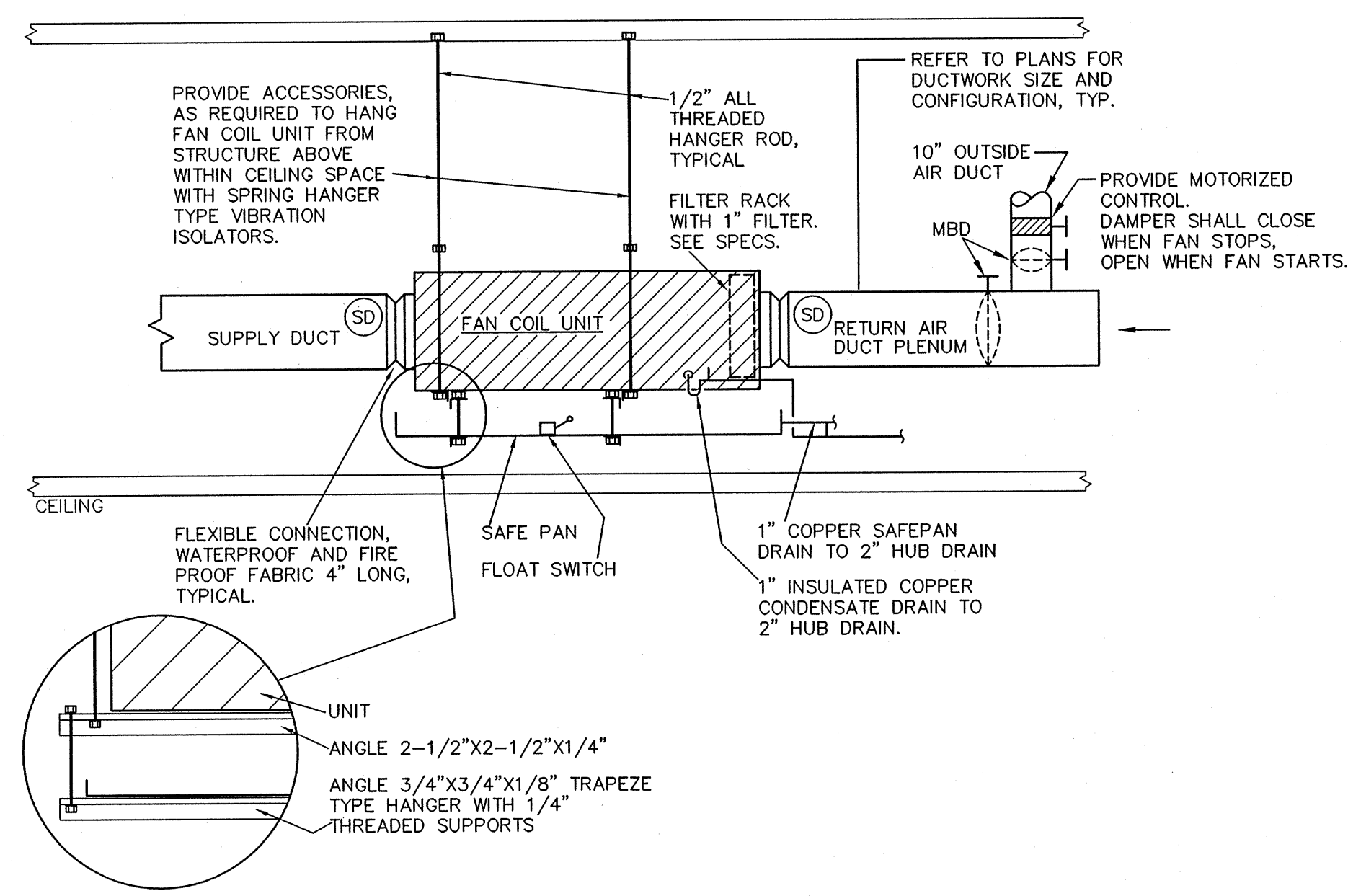
NOTE: SUPPLIERS NOT ABLE TO MEET ANY OF THE ABOVE COMBINATIONS SHALL USE THE NEXT LARGER TYPE SCHEDULED.

VENT - V (SMALL - SQUARE)  
 CEILING MOUNTED RECESSED VENT FOR 80 CFM EXHAUST AT 0.1" S.P., 120 VOLT, 1 PHASE, 1.5 SONES MAXIMUM. SWITCH WITH LIGHTS. NUTONE MODEL QT-80, BROAN MODEL S-90 OR EQUAL AS LISTED IN 'ADDENDA'.

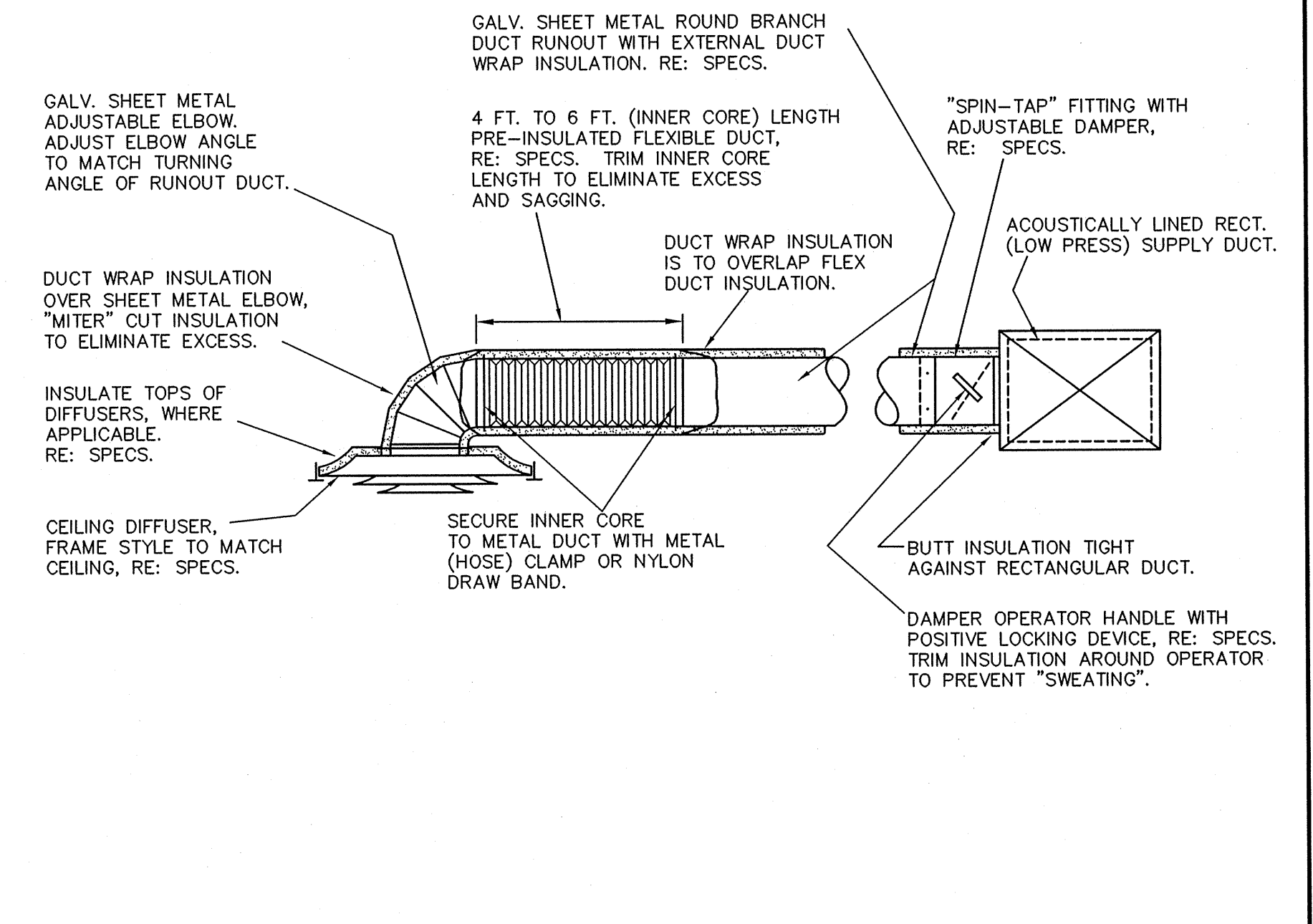
PUMPS										
DESIGNATION	GPM	DISC. HEAD FT. WTR	RPM	TYPE	ELECTRICAL DATA			STARTERS		REMARKS
					H.P.	VOLTS	PH	TYPE	LOCATION	
P-1	20	34	3450	MULTI-VANE VORTEX	1/2	115	1	MAG	CTL PANEL	[1]
P-2	100	20	1750	HORIZONTAL END SUCTION	5	240	3	MAG	LIFT STATION	[2]
P-3	25	130	3450	SUBMERSIBLE	1-1/2	240	1	MAG	WATER WELL	[3]

[1] PUMP SHALL BE FOR SUBMERSIBLE EFFLUENT, SOLIDS HANDLING SERVICE. PUMP SHALL BE BARNES EHV OR APPROVED EQUAL. PUMP SHALL BE CONNECTED TO FLOAT SWITCHES AND CONTROL PANEL OF SEWER TREATMENT PLANT AS PER MANUFACTURER RECOMMENDATIONS.  
 [2] PUMP SHALL BE CHOPPER PUMP, VAUGHN MODEL E3F, OR APPROVED EQUAL.  
 [3] PUMP SHALL BE SUBMERSIBLE GOULDS MODEL 25LS15412 OR APPROVED EQUAL.

**1 MECHANICAL EQUIPMENT SCHEDULES**



**2 HORIZONTAL FAN COIL UNIT DETAIL (TYP.)**  
NOT TO SCALE



**3 ROUND DUCT BRANCH RUNOUT CONNECTION DETAIL**  
NOT TO SCALE

DESIGN CONSULTANT  
**domain design**  
 ARCHITECTURE & INTERIORS  
 1000 PINE BLVD., SUITE 200  
 HOUSTON, TEXAS 77002

**GRSA-SIGMA**  
 CONSULTANTS AND ENGINEERS

NEW OFFICE/ WAREHOUSE BUILDING FOR  
**IESI WASTE TRANSFER STATION**  
 HOUSTON, TX 77043

THESE DRAWINGS ARE THE PROPERTY OF DOMAIN DESIGN ARCHITECTURE AND ARE NOT TO BE REPRODUCED IN WHOLE OR IN PART. THEY ARE ONLY TO BE USED FOR THE PROJECT AND SITE SPECIFICALLY IDENTIFIED HEREIN.  
 SCALES STATED HEREON ARE VALID ON THE ORIGINAL DRAWING ONLY. CONTRACTORS SHALL CAREFULLY REVIEW ALL DIMENSIONS AND CONDITIONS BEFORE AND REPORT TO THE ARCHITECT ANY ERRORS, INCONSISTENCIES, OR OMISSIONS DISCOVERED.  
 THESE PLANS WERE PREPARED IN THIS OFFICE UNDER OUR PERSONAL SUPERVISION AND TO THE BEST OF OUR KNOWLEDGE COMPLY WITH STATE AND LOCAL CODES. WE WILL GENERALLY ADMINISTER CONSTRUCTION.



DATE: 3/08  
**ISSUED FOR CONSTRUCTION**

PROJ. #	REVISIONS
C07-0033	

DATE  
 12 MAR 2008  
 SHEET

M03