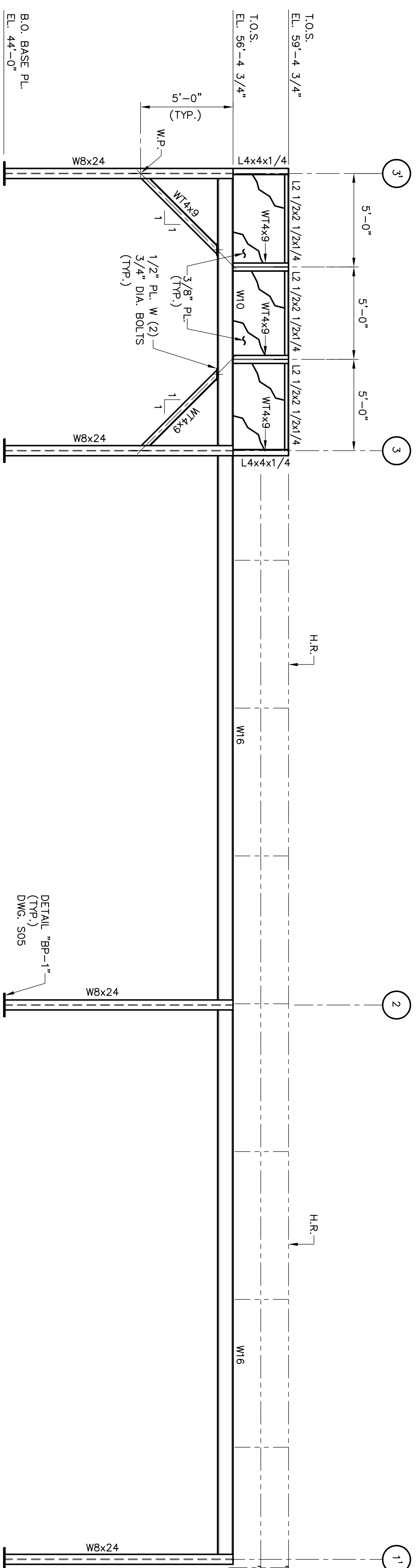


ELEVATION @ COLUMN ROW D

SCALE: 1/4"=1'-0"



ELEVATION @ COLUMN ROW D'

SCALE: 1/4"=1'-0"

NOTES:
1. FOR STEEL GENERAL NOTES SEE DWG. 70905S01.

NOT FOR CONSTRUCTION

IESI COVINGTON PICKUP STATION
ELEVATIONS @ COL. ROWS D & D'
STRUCTURAL

COVINGTON, LA

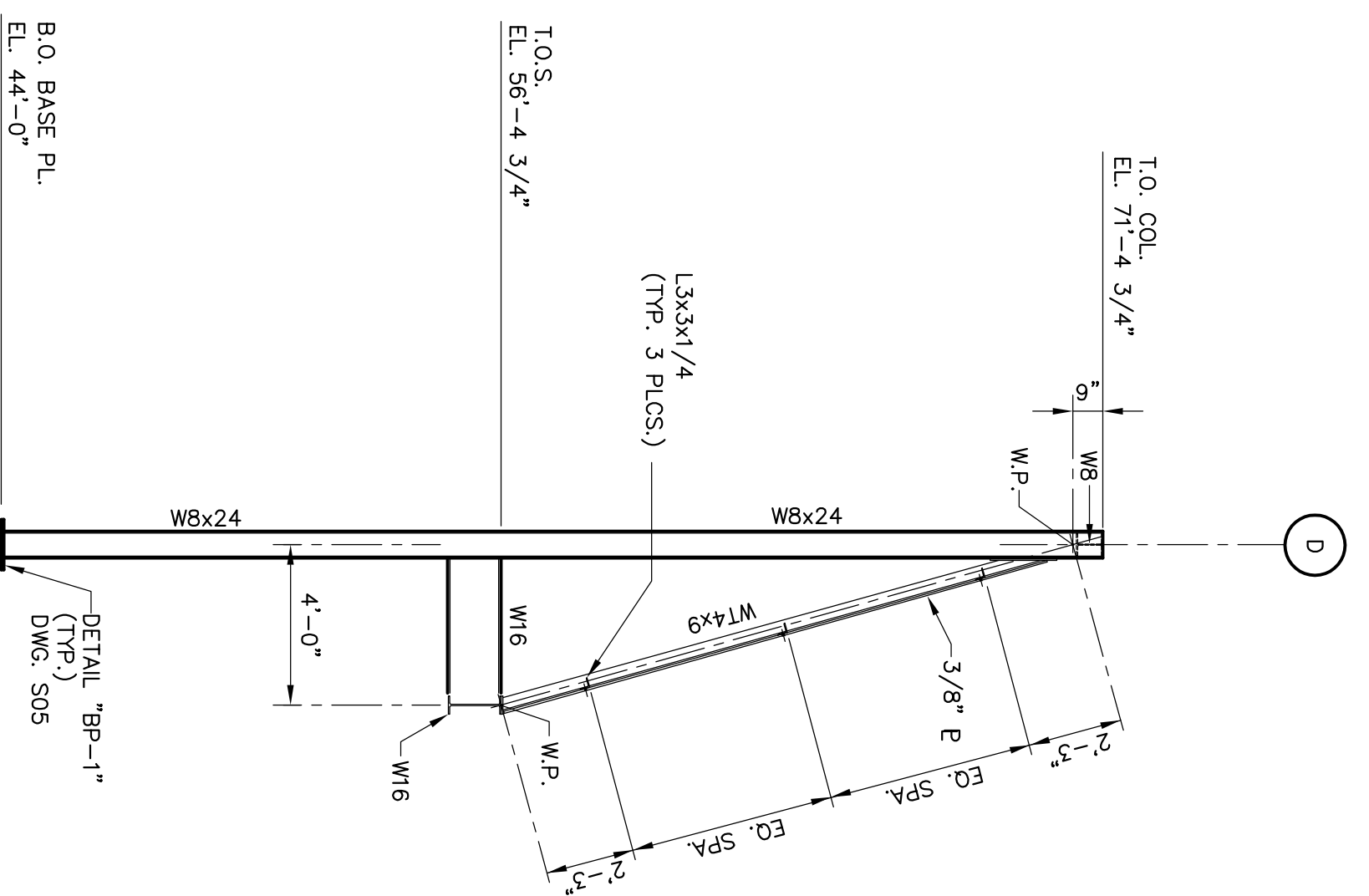
4/08



CONSULTANTS AND ENGINEERS

REV.	DATE	DESCRIPTION	BY
0	4/08	ISSUED FOR BID	DMD
		REVISIONS	

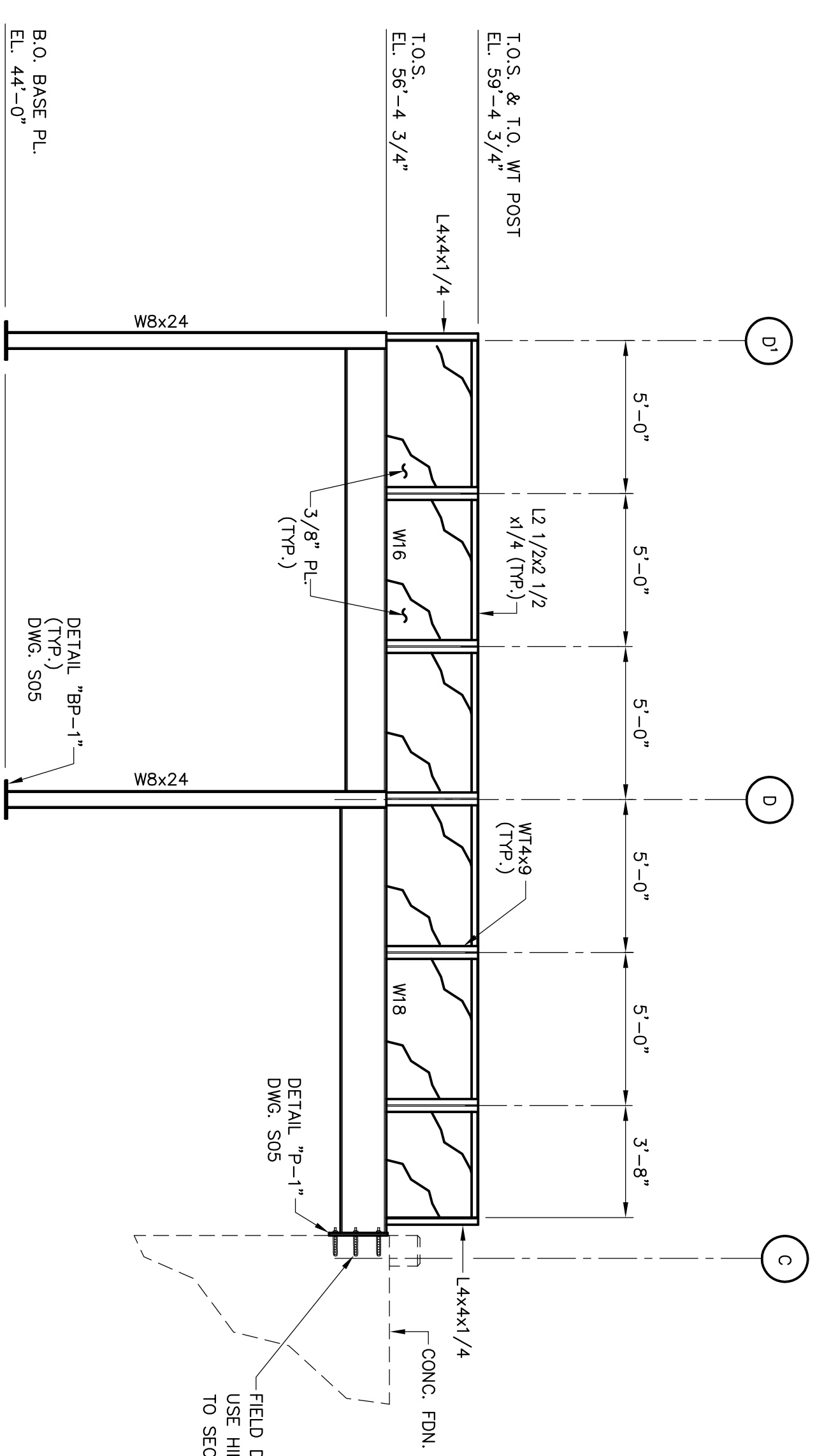
DESIGNED	DRAWN	CHECKED	APPROVED
DMD	DMD	JCA	DLS
DRAWING NUMBER			REV.
70905S02			0



LOOKING SOUTHWEST

ELEVATION @ COLUMN LINE 2'

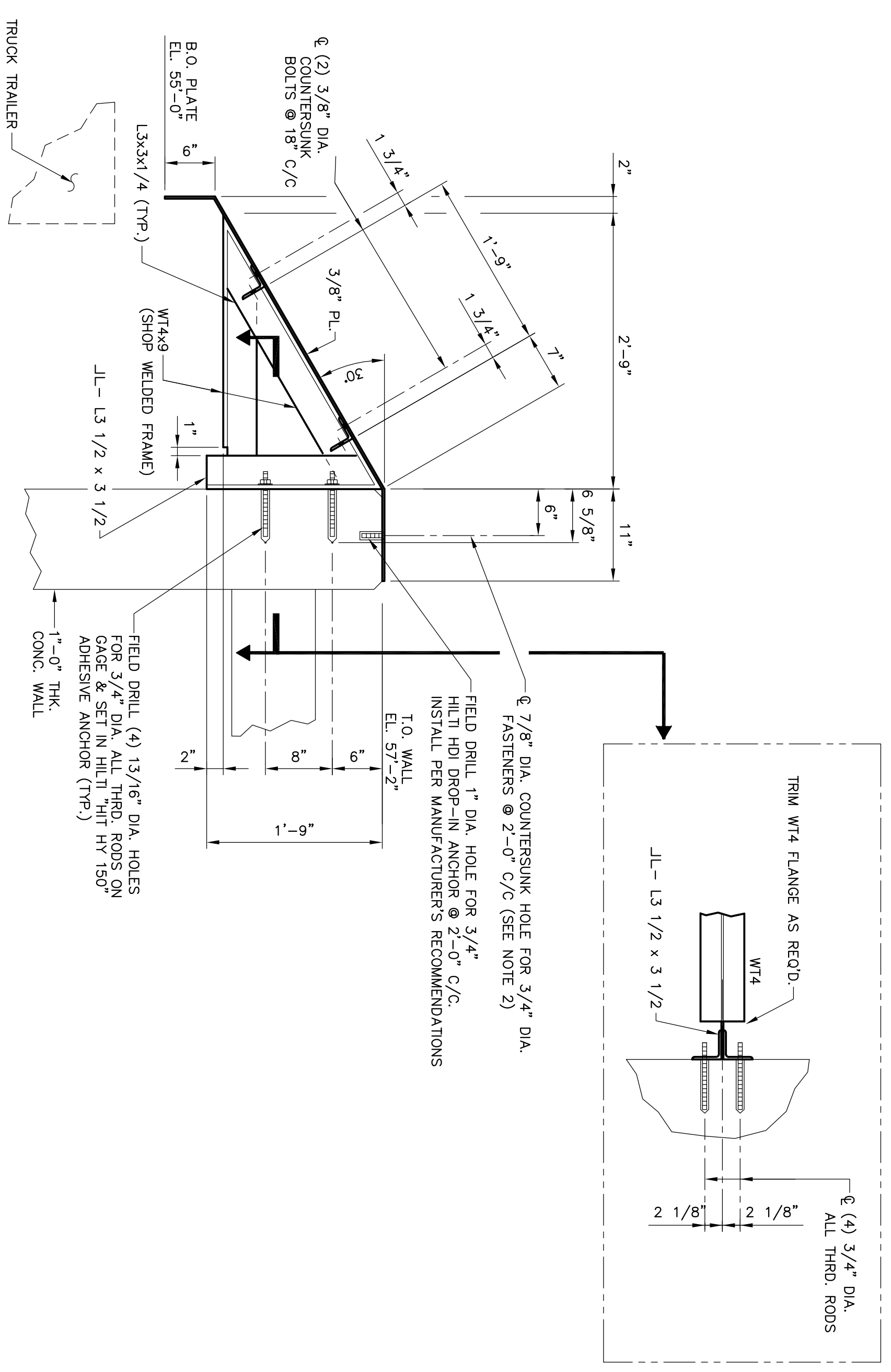
SCALE: 1/4"=1'-0"



LOOKING SOUTHWEST

ELEVATION @ COLUMN LINE 3'

SCALE: 1/4"=1'-0"



SECTION "F-F"

SCALE: 1"=1'-0"
REF: DWG. S01
(TYP. 8 PLCS)

- NOTES:**
1. FOR STEEL GENERAL NOTES SEE DWG. 70905S01.
 2. FASTENERS SHALL BE 3/4" DIA. GALVANIZED FLAT HEAD SLOTTED COUNTERSUNK SCREWS TYPE 1018 CARBON STEEL. PLATE FABRICATOR SHALL DRILL 7/8" DIA. COUNTERSUNK HOLES BEFORE GALVANIZING.

NOT FOR CONSTRUCTION

REV.	DATE	ISSUED FOR	DESCRIPTION	BY
0	4/08	ISSUED FOR BID		DMD

IESI COVINGTON PICKUP STATION

ELEVATIONS @ COL. LINES 2' & 3'
STRUCTURAL

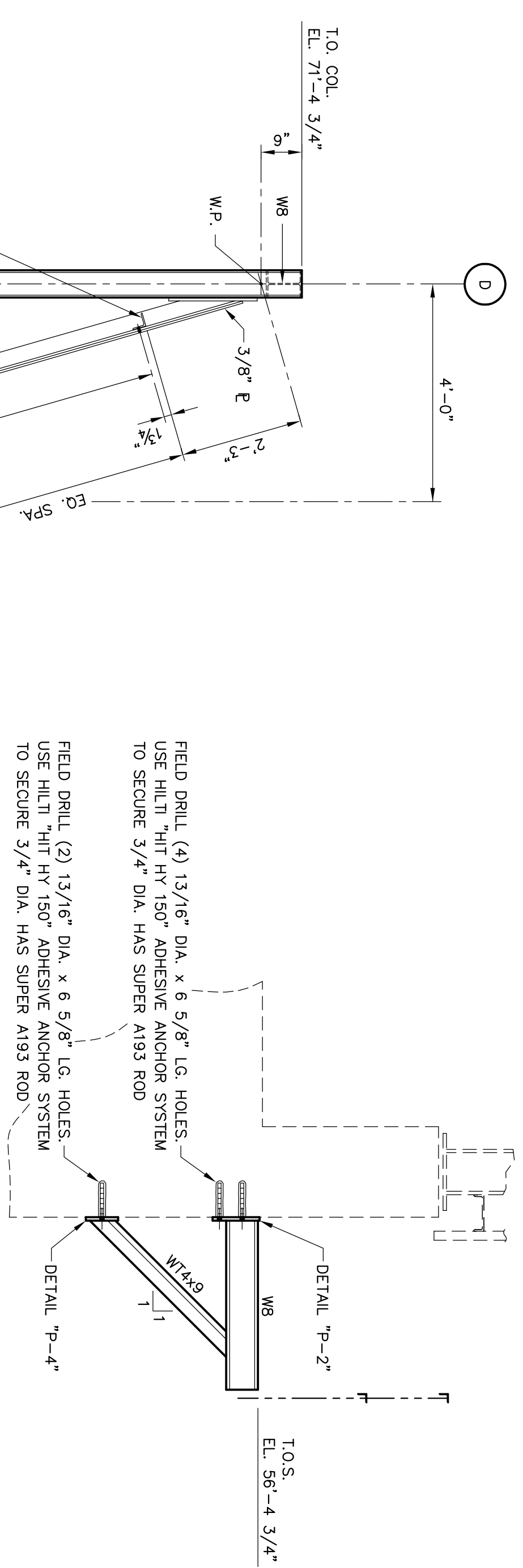
COVINGTON, LA 4/08

GRSA-Sigma
CONSULTANTS AND ENGINEERS

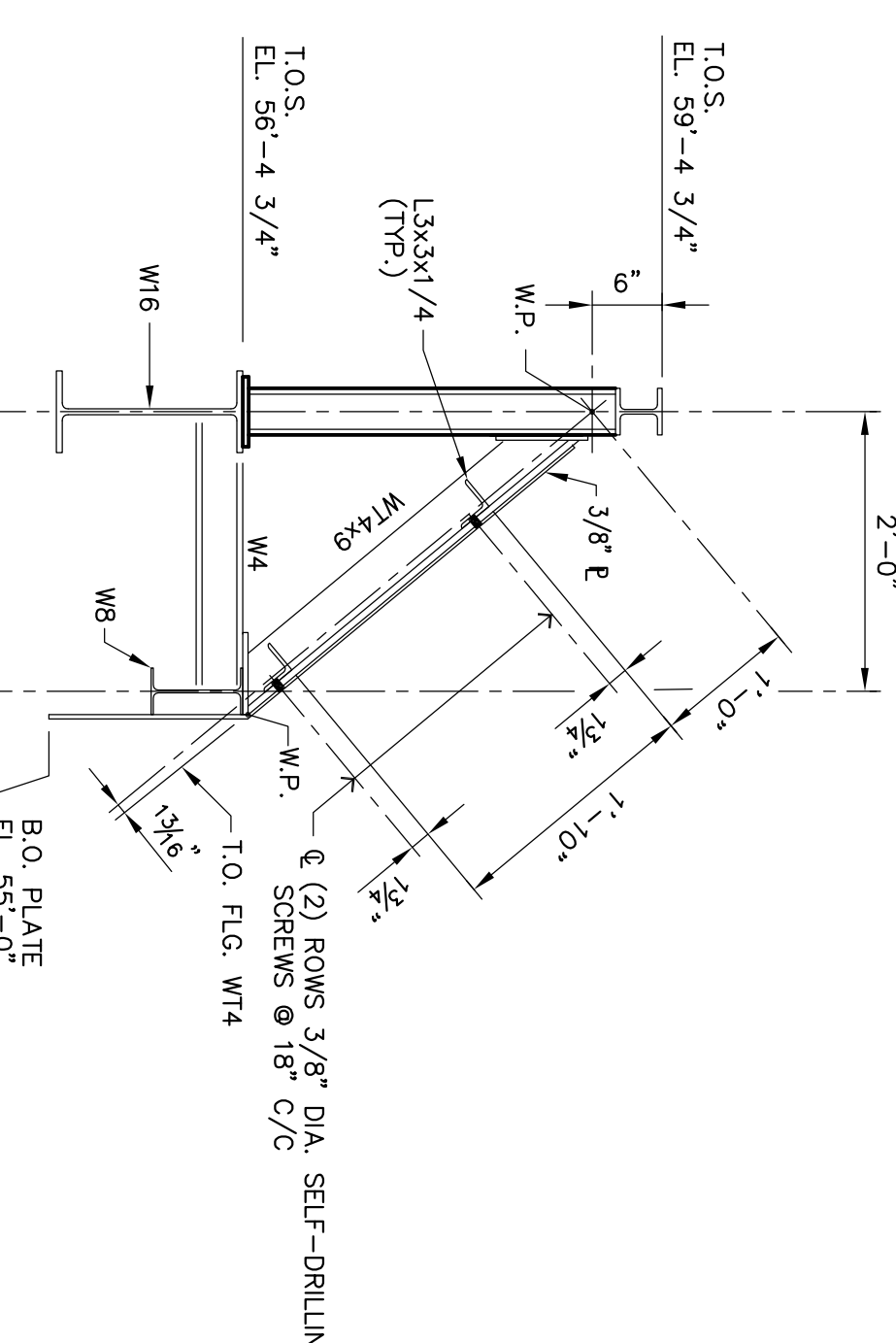
DESIGNED	DMD	DRAWN	DMD	CHECKED	JCA	APPROVED	DLS
DRAWING NUMBER						70905S04	REV.
						0	

NOTES:

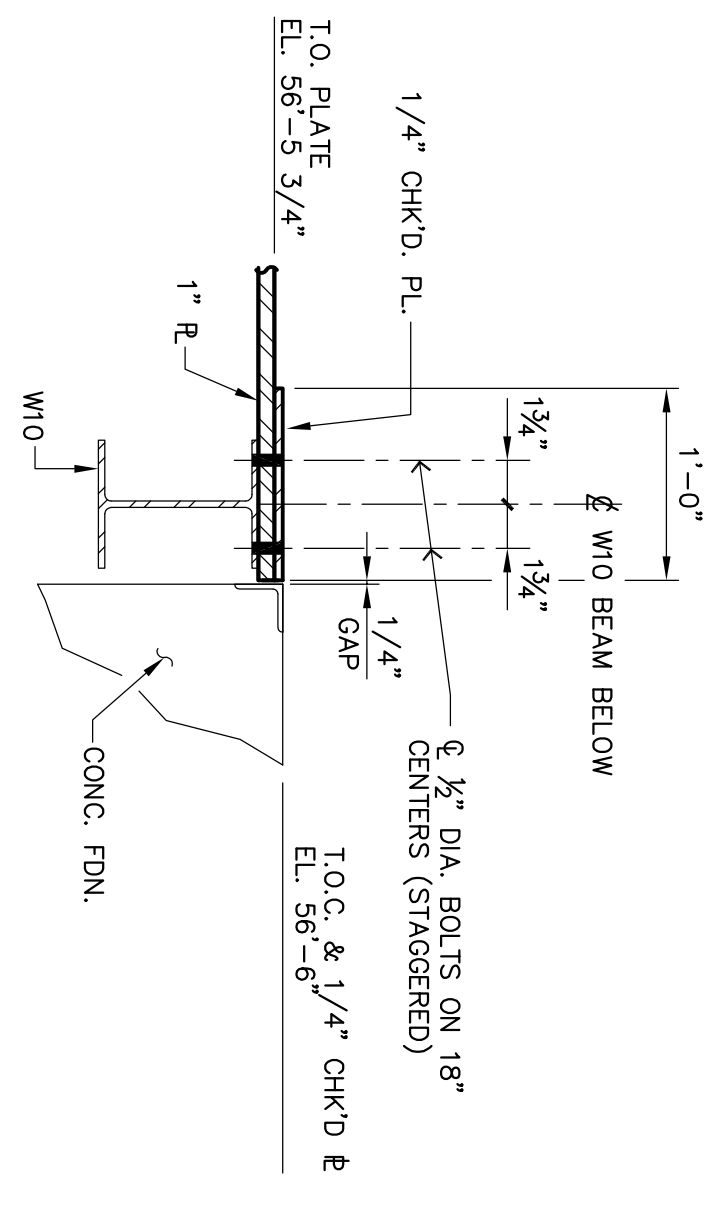
1. FOR STEEL GENERAL NOTES SEE DWG. 70905S01.



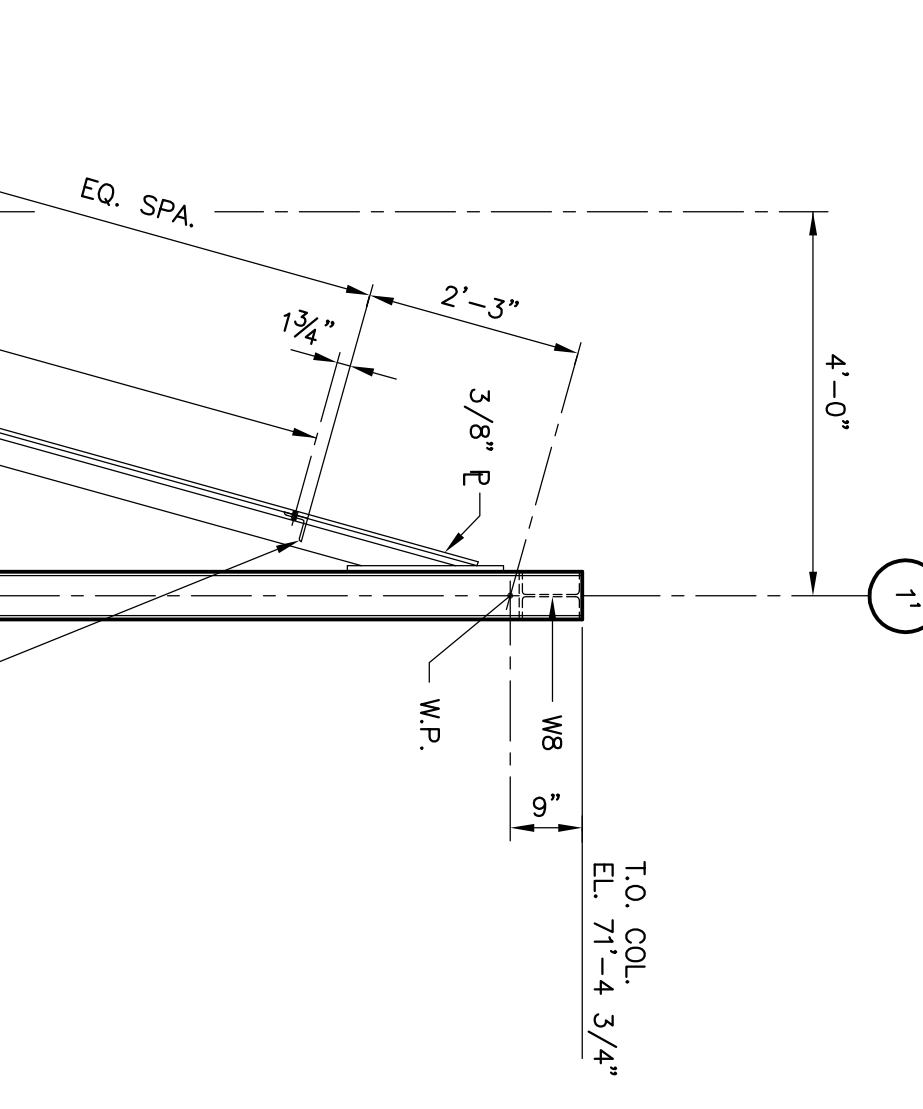
SECTION "A-A"
SCALE: 1/2"=1'-0"
REF. DWG. S01
(TYP. 3 PLCS.)



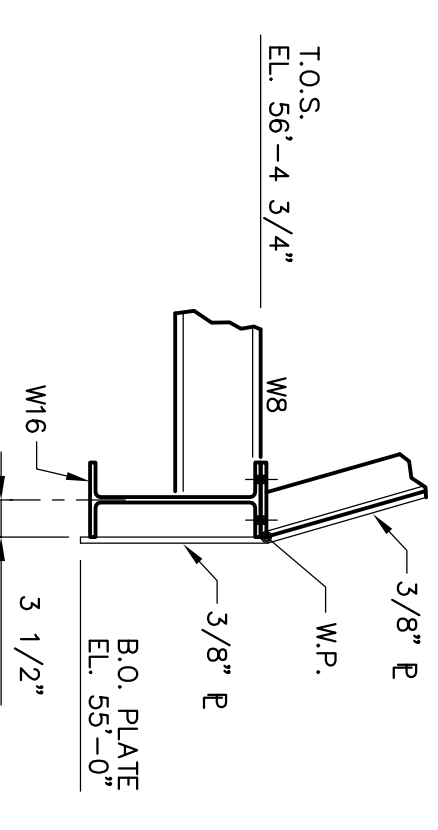
SECTION "B-B"
SCALE: 1/2"=1'-0"
REF. DWG. S01



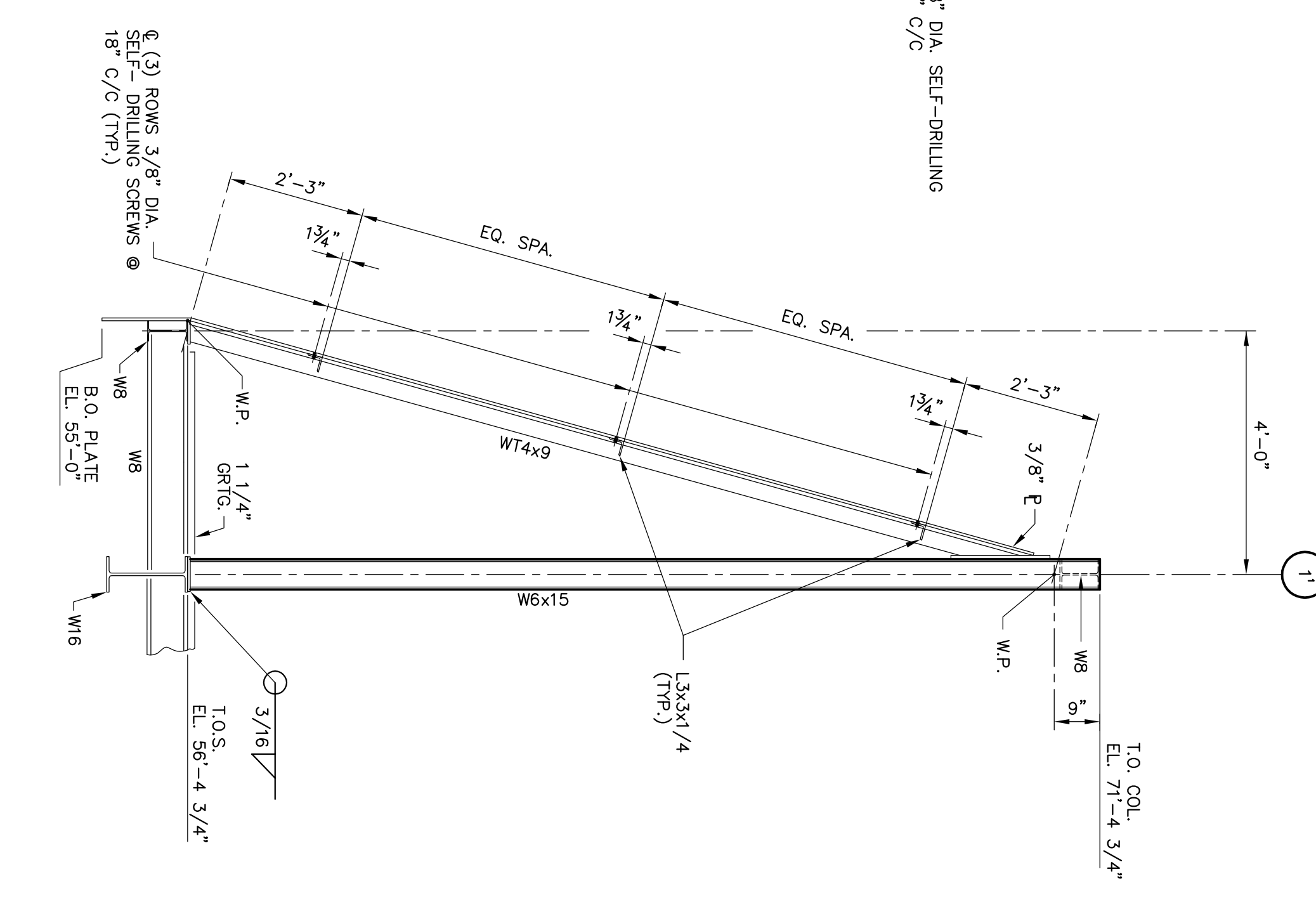
SECTION "C-C"
SCALE: 1"=1'-0"
REF. DWG. S01



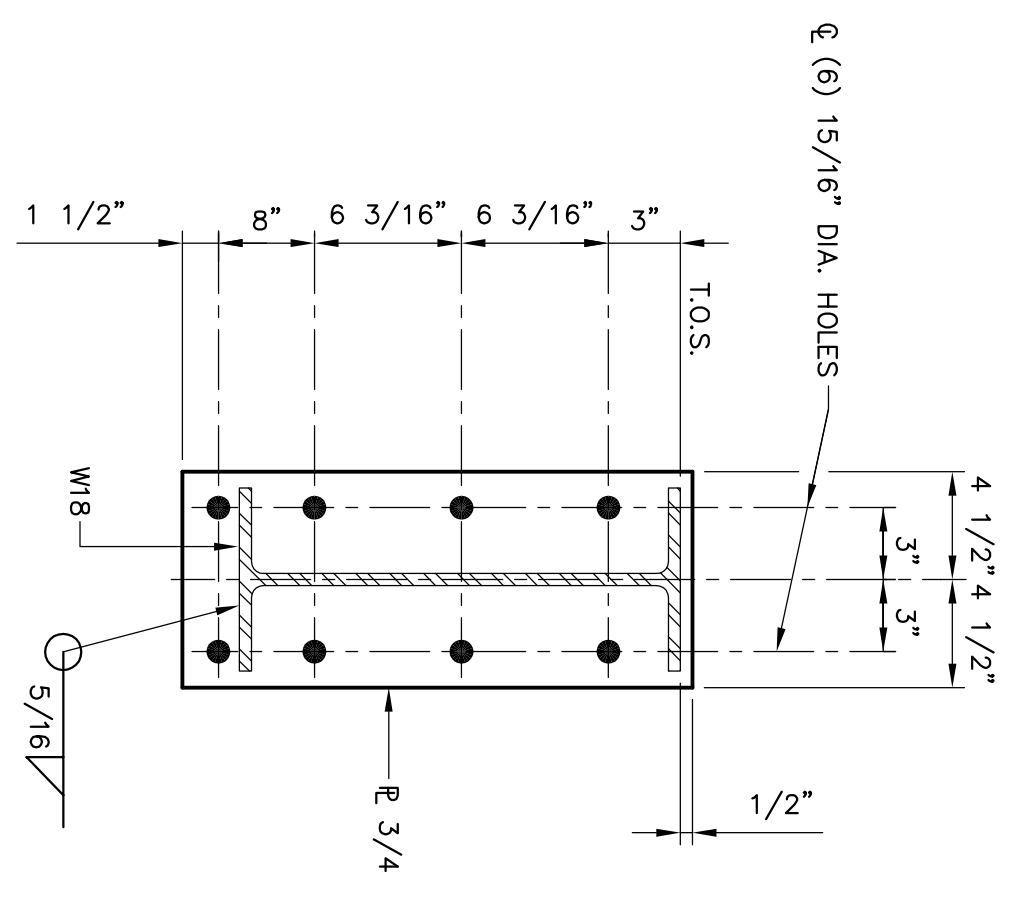
SECTION "D-D"
SCALE: 3/4"=1'-0"
REF. DWG. S01
(TYP. 3 PLCS.)



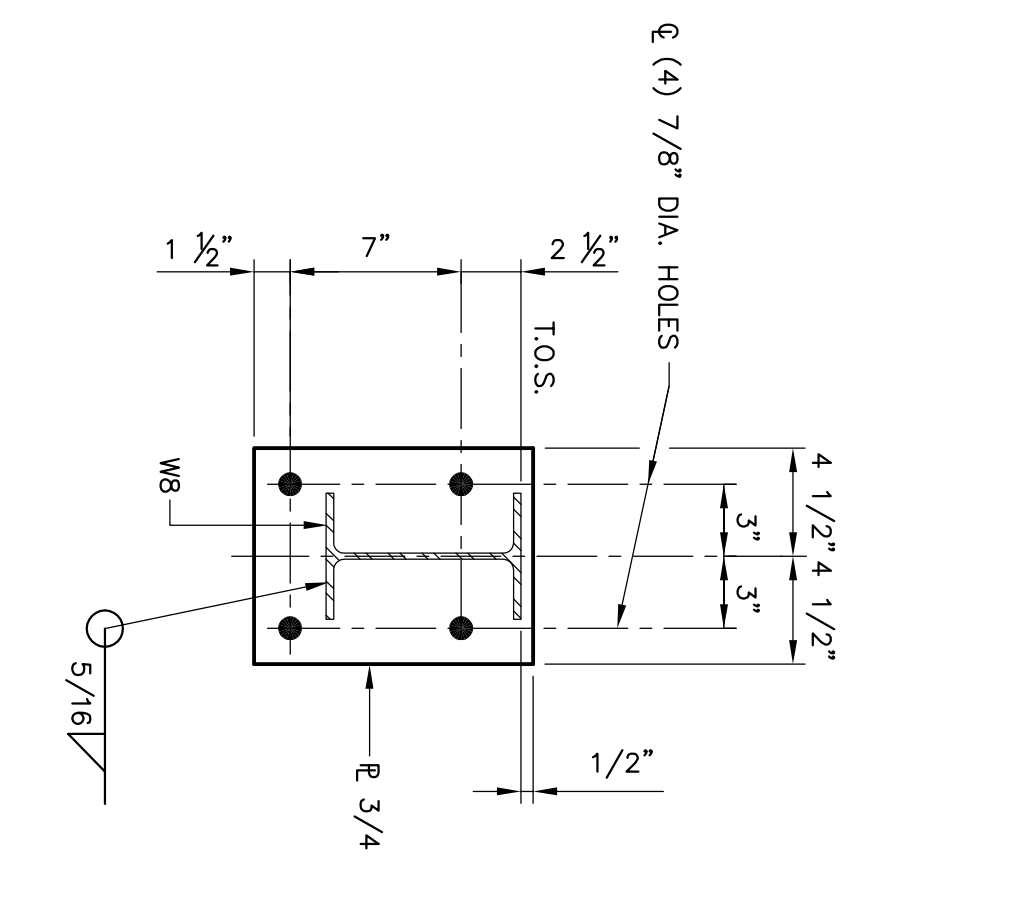
DETAIL "1"
SCALE: 1"=1'-0"
REF. DWG. S01



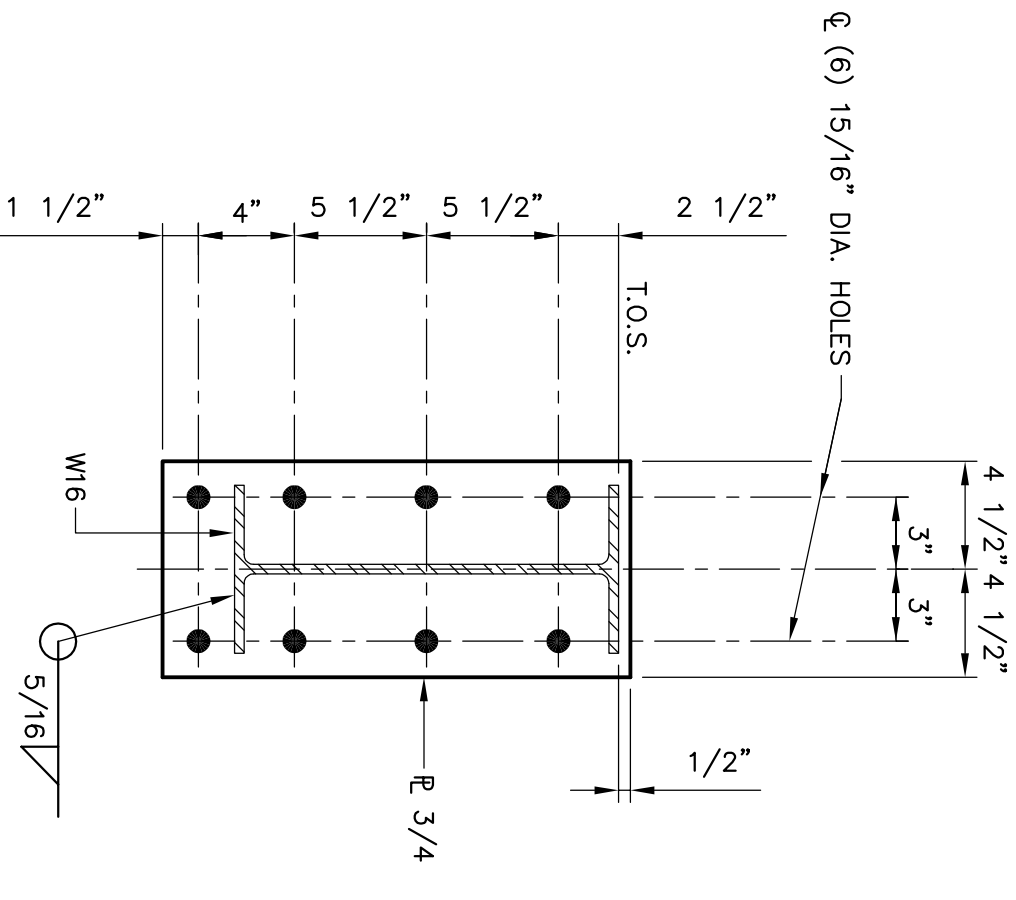
SECTION "E-E"
SCALE: 1/2"=1'-0"
REF. DWG. S01
(TYP. 3 PLCS.)



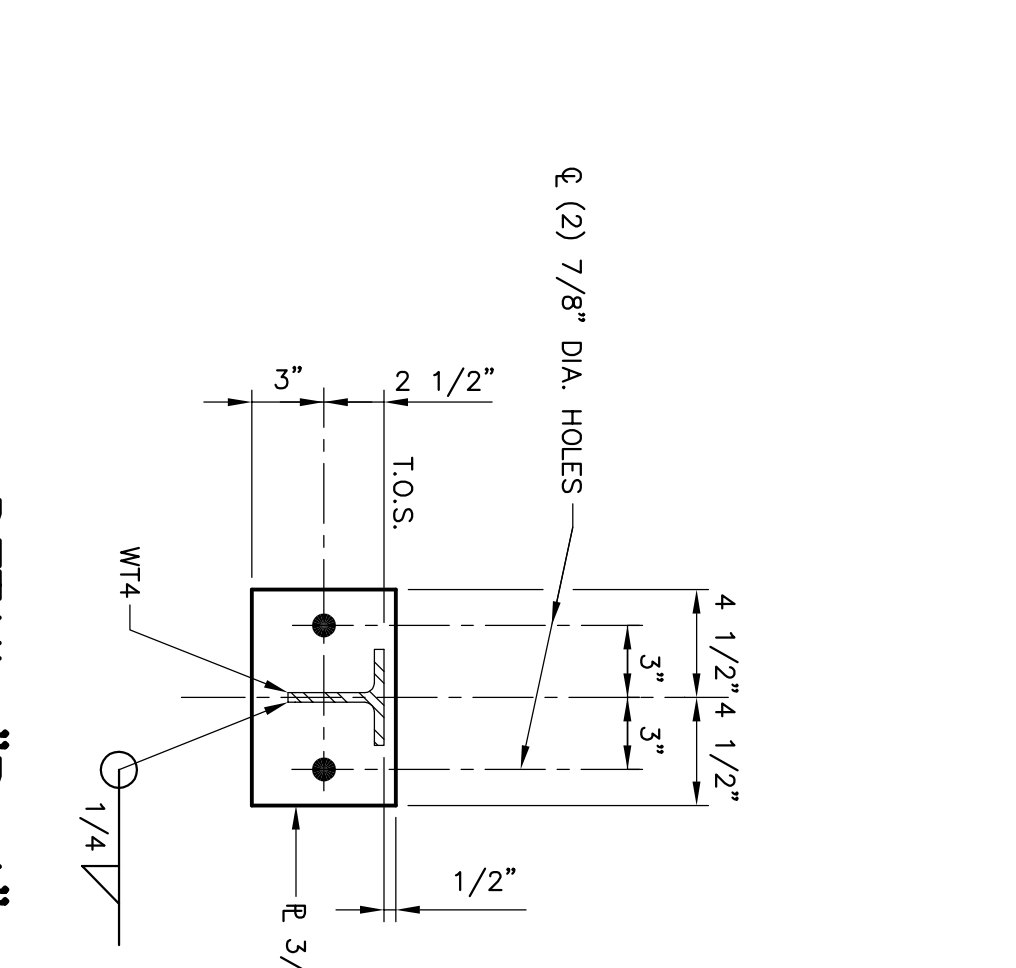
DETAIL "P-1"
SCALE: 1 1/2"=1'-0"
REF. DWG. S01



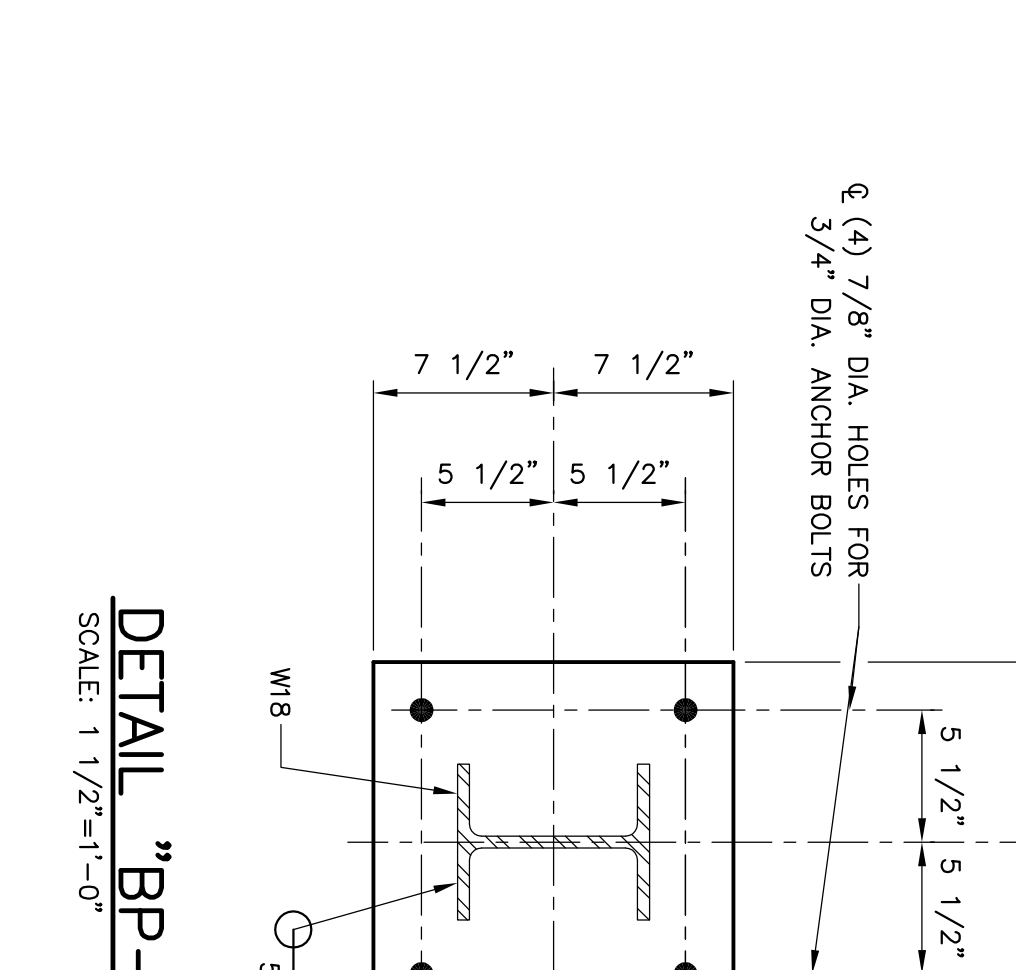
DETAIL "P-2"
SCALE: 1 1/2"=1'-0"
REF. DWG. S01



DETAIL "P-3"
SCALE: 1 1/2"=1'-0"
REF. DWG. S01



DETAIL "P-4"
SCALE: 1 1/2"=1'-0"
REF. DWG. S01



DETAIL "BP-1"
SCALE: 1 1/2"=1'-0"


REV.	DATE	ISSUED FOR	DESCRIPTION	BY
0	04/08	ISSUED FOR BID		DMD

NOT FOR CONSTRUCTION

IESI COVINGTON PICKUP STATION

SECTIONS & DETAILS
STRUCTURAL

COVINGTON, LA 04/08



GRSA-Sigma
CONSULTANTS AND ENGINEERS

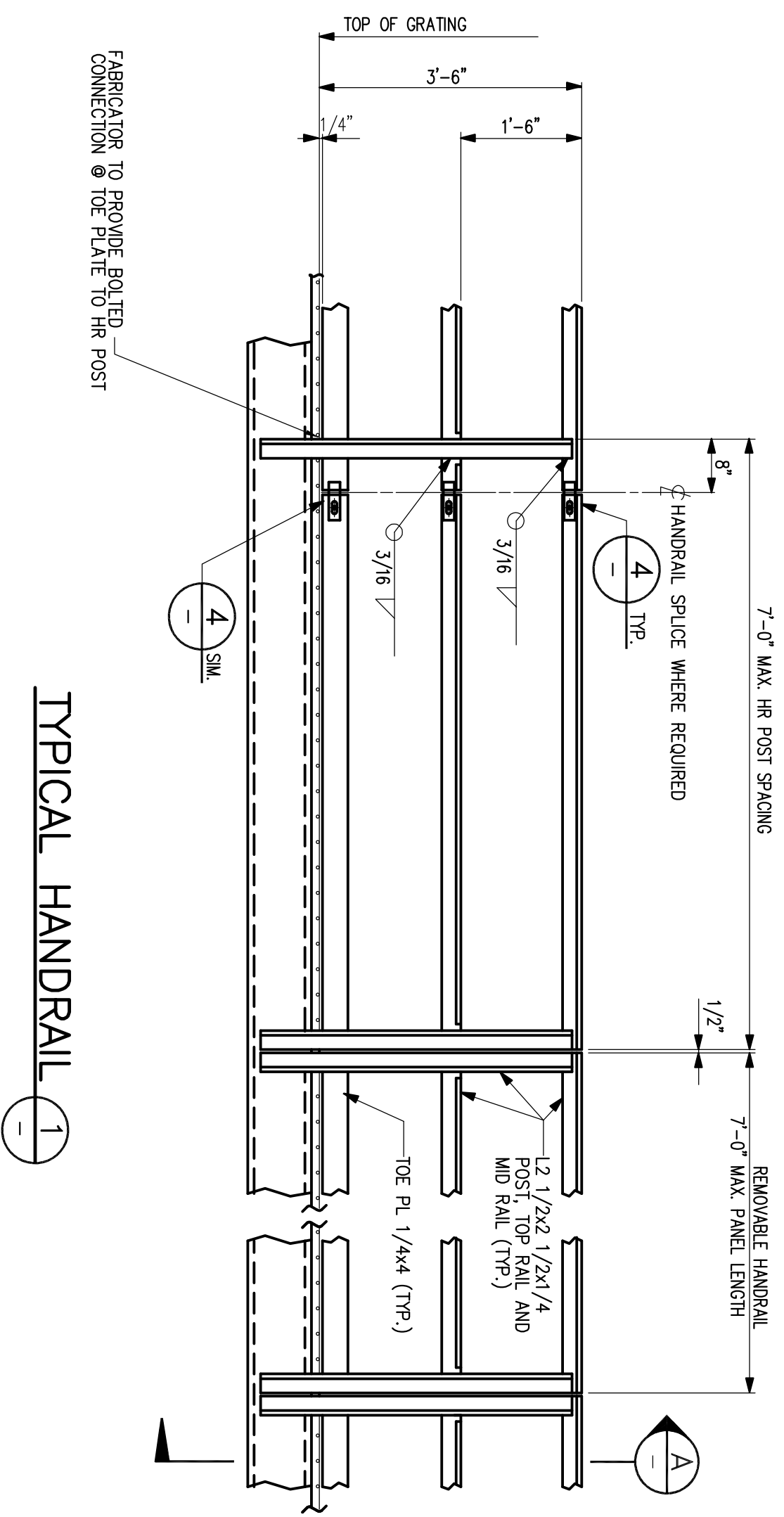
DESIGNED: **DMD**

DRAWN: **DMD**

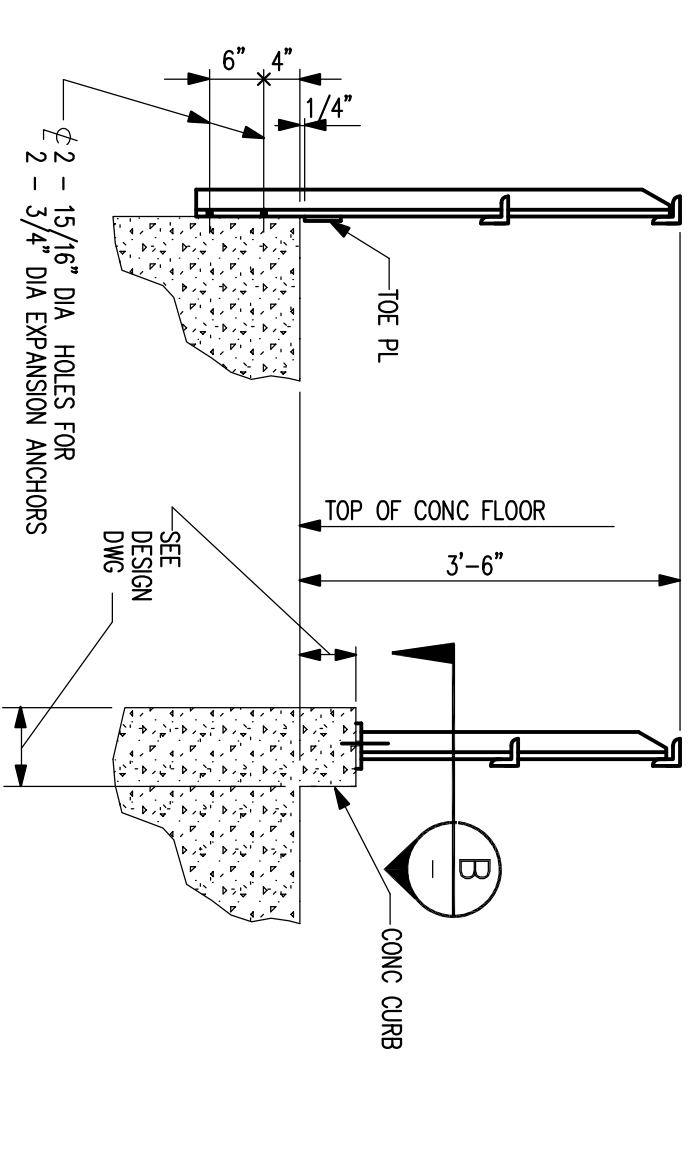
CHECKED: **JCA**

APPROVED: **DLS**

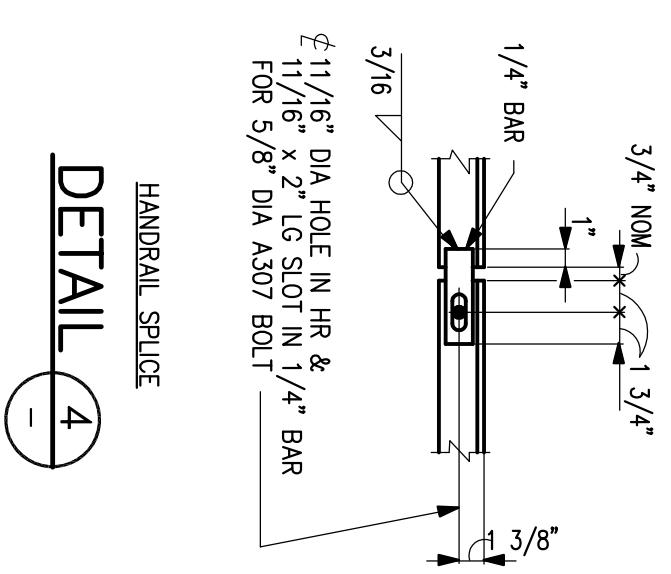
DRAWING NUMBER: **70905S05**



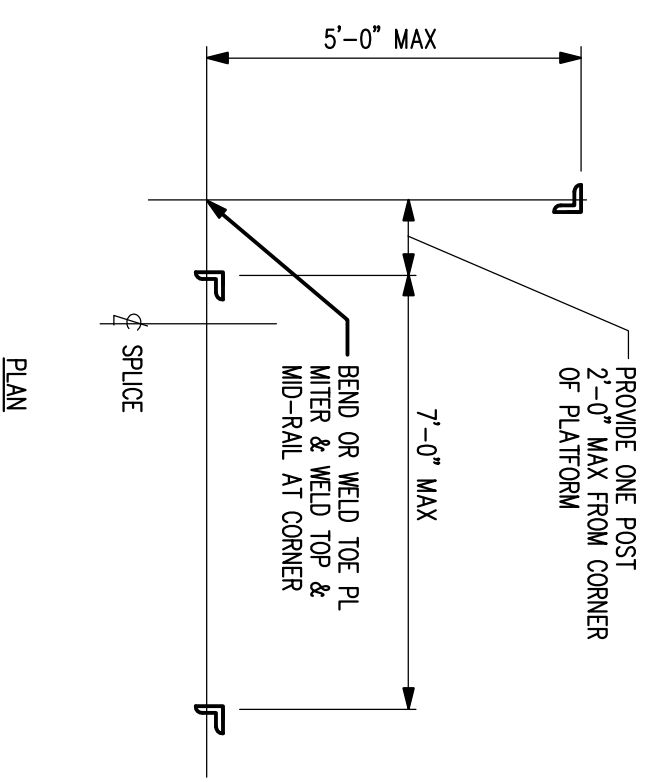
TYPICAL HANDRAIL (1)



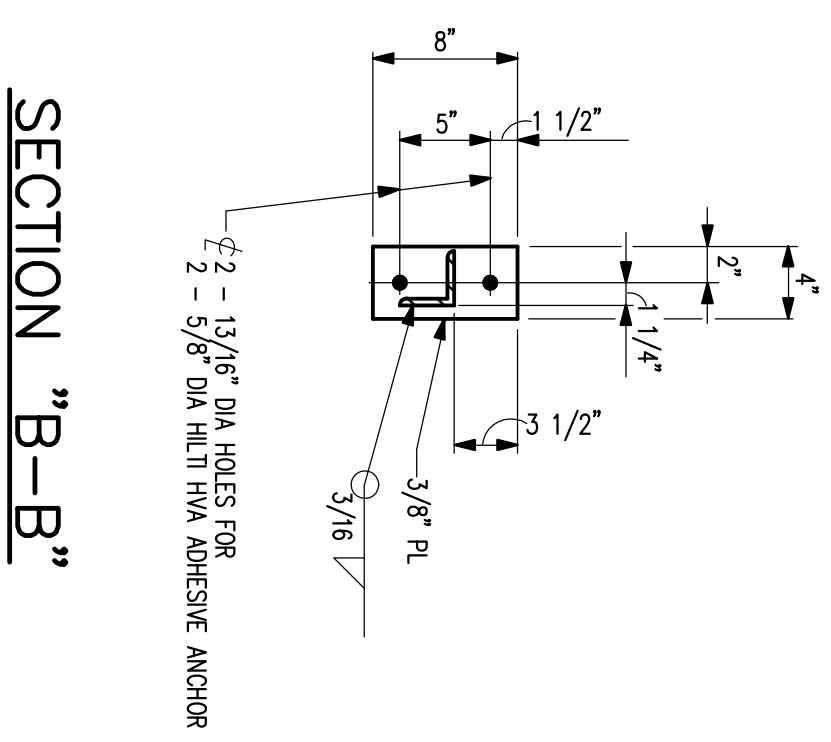
HANDRAIL POST AT CONC. FLOOR (2)
(SAME AS TYP. HANDRAIL EXCEPT AS SHOWN)



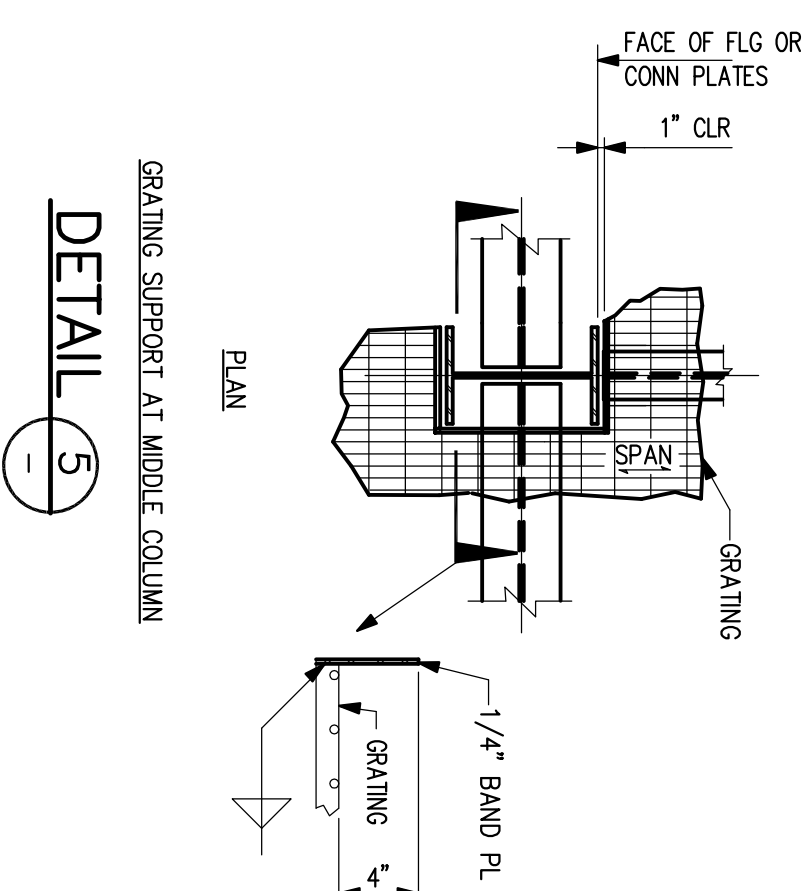
HANDRAIL SPLICE (4)



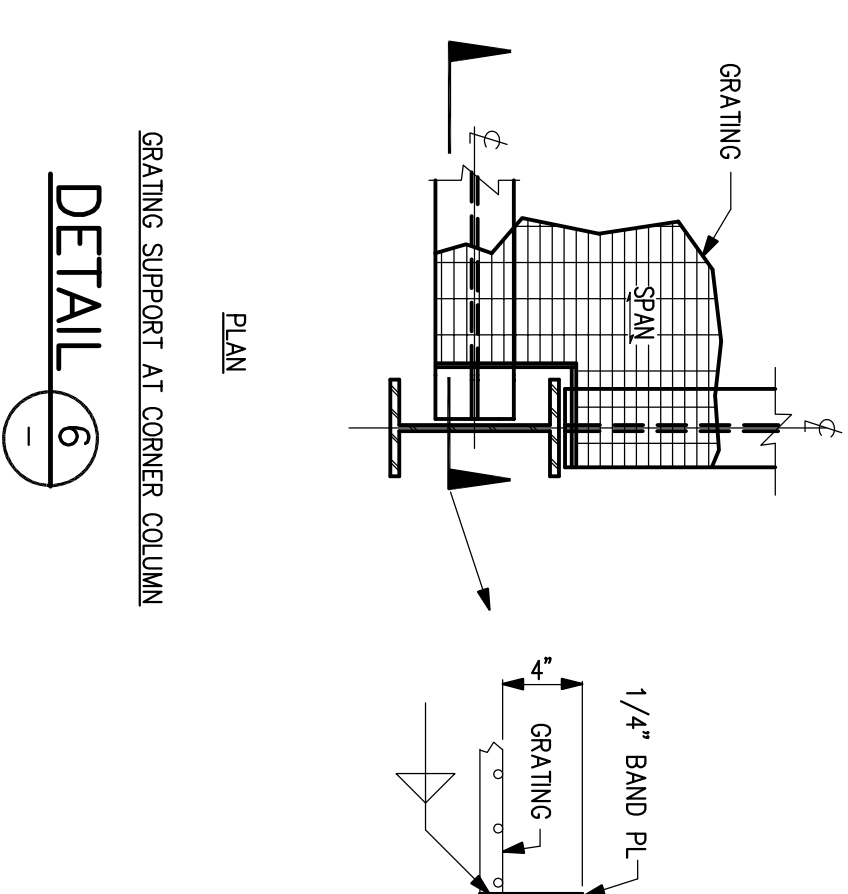
HANDRAIL POST @ CORNER (3)



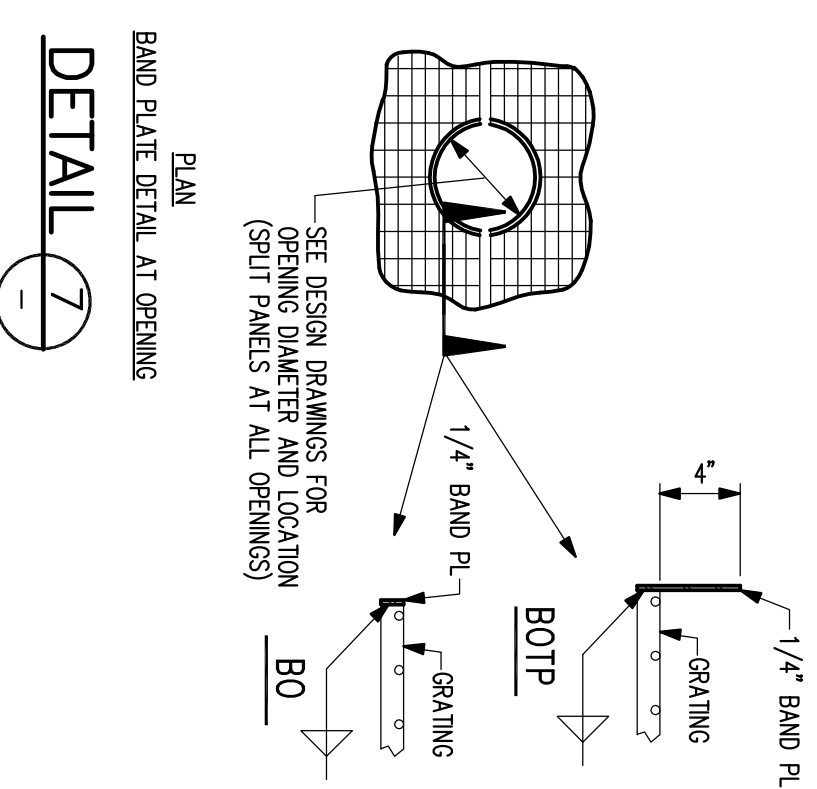
SECTION "B-B"



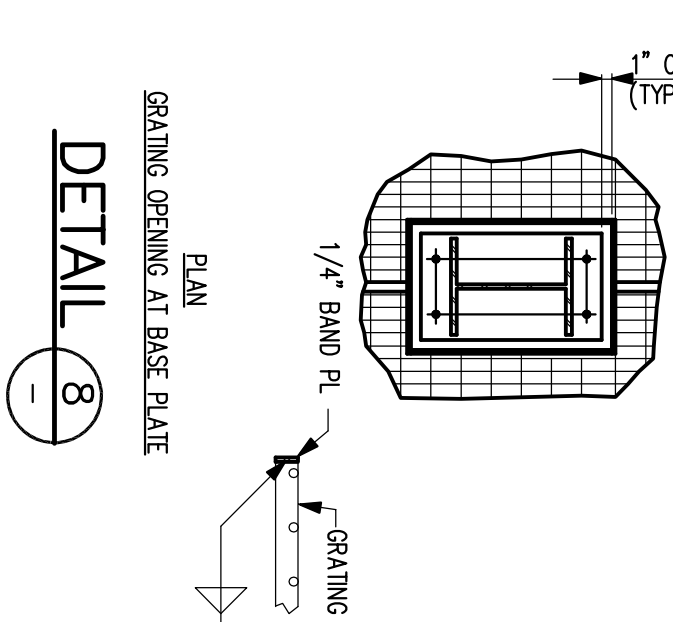
GRATING SUPPORT AT MIDDLE COLUMN (5)



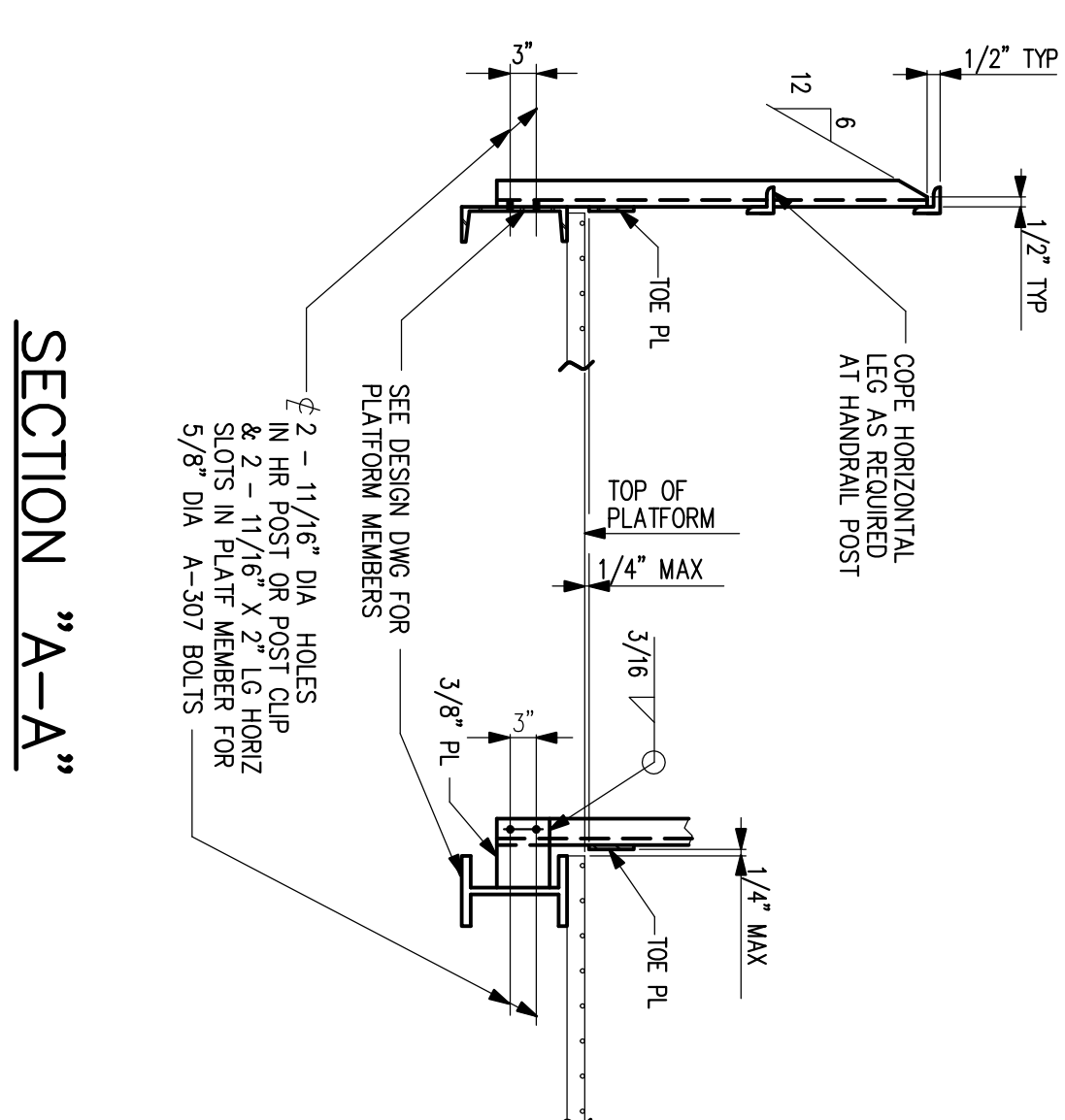
GRATING SUPPORT AT CORNER COLUMN (6)



BAND PLATE DETAIL AT OPENING (7)



GRATING OPENING AT BASE PLATE (8)



SECTION "A-A"

- NOTES:**
1. SEE DESIGN DRAWINGS AND GENERAL NOTES FOR PLATFORM MEMBERS AND DIMENSIONS.
 2. ALL SHARP EDGES AND CORNERS SHALL BE GROUND SMOOTH.
 3. BOLTS FOR HANDRAIL SHALL BE 5/8" DIA. (A307) IN 1 1/8" DIA. HOLES UNLESS NOTED OTHERWISE.
 4. SHIP-WELDED HANDRAIL SECTIONS SHALL NOT EXCEED 20'-0" IN LENGTH.
 5. ALL WELDED CONNECTIONS SHALL BE SEAL WELDED FOR GALVANIZING.
 6. USE AISC MINIMUM FILED WELD SIZE WHEN SIZE IS NOT SHOWN.
 7. EXPANSION ANCHORS SHALL BE 3/4" x 4 3/4" HITTI KWK-BOLT II OR APPROVED EQUAL (UNLESS OTHERWISE NOTED).
 8. THIS STANDARD COVERS GUARDRAILS FOR INDUSTRIAL STRUCTURES MULTI-HANDRAIL FOR BUILDINGS SHALL BE BUILT IN ACCORDANCE WITH NFPA 101, LIFE SAFETY CODE.

NOT FOR CONSTRUCTION

IESI COVINGTON PICKUP STATION

HANDRAIL STANDARD DETAILS
CIVIL/STRUCTURAL

COVINGTON, LA

4/08



GRSA-Sigma
CONSULTANTS AND ENGINEERS

REV.	DATE	DESCRIPTION	DESIGNED BY	CHECKED BY	APPROVED BY
0	04/09	ISSUED FOR BID	CJG	DMD	DLS
		REVISIONS			

DRAWING NUMBER 70905S06