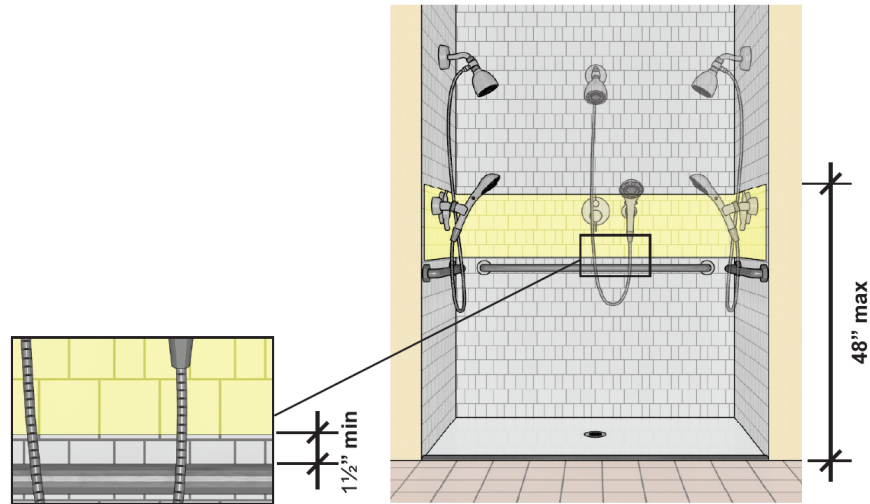


Controls and Enclosures

In a standard roll-in compartment without a seat, the controls, faucet, and shower spray unit can be located on any of the three walls. They must be located above grab bars and within accessible reach range. Shower controls and fittings must be at least 1½" above the grab bar so that they do not impede the bar's gripping surface. Enclosures cannot obstruct controls, faucets, shower spray units or transfer to seats.



Thresholds

Thresholds at roll-in showers must comply with specifications for changes in level to allow access to wheeled mobility aids. While a threshold height up to ½" (if properly beveled) is permitted, trench drains and other designs that allow a flush transition to the shower floor will provide easier access. Shower floors can slope to drains (a 1:48 maximum slope will help control water without impacting accessibility). Where floor drains are provided in bathing rooms, it is important that the slope of the floor not exceed the 1:48 minimum cross slope.

