

DAMMON
ENGINEERING, INC.

CHIEF ENGINEER
EMMETT
DAMMON, P.E.
CHIEF ARCHITECT
ROBERT
WILTSE

1095 FLORIDA AVENUE
SLIDELL, LA, 70458
OFFICE: 985-649-5832
FAX: 985-641-5950

WEBSITE:
WWW.DAMMONENGINEERING.COM
EMAIL:
DAMMONENG@BELLSSOUTH.NET

ARCHITECTURE
ENGINEERING
STUDIES
PLANNING
INVESTIGATION
EXPERT WITNESS

NORTHEAST
GLASS WALL

PORT AUTHORITY
ADMIN. AND
SECURITY COMPLEX
9000 W. ST. BERNARD HWY.
CHALMETTE, LA

FOR
SLIDELL GLASS

REV:

SCALE: 3/8" = 1'

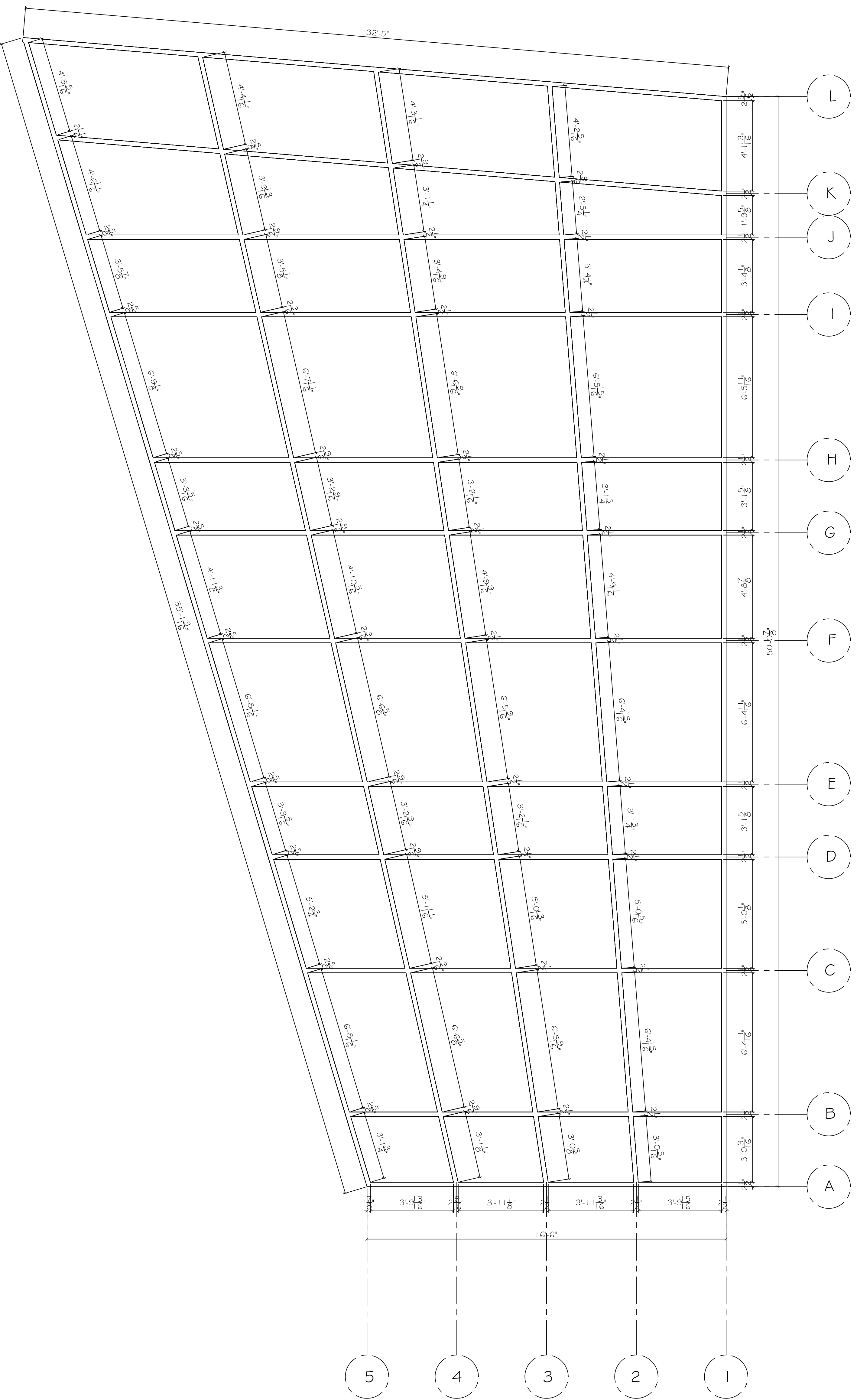
JOB#:

DATE: XX-XX-08

SHEET

S-1

OF



ACTUAL VERTICAL DIMENSIONS