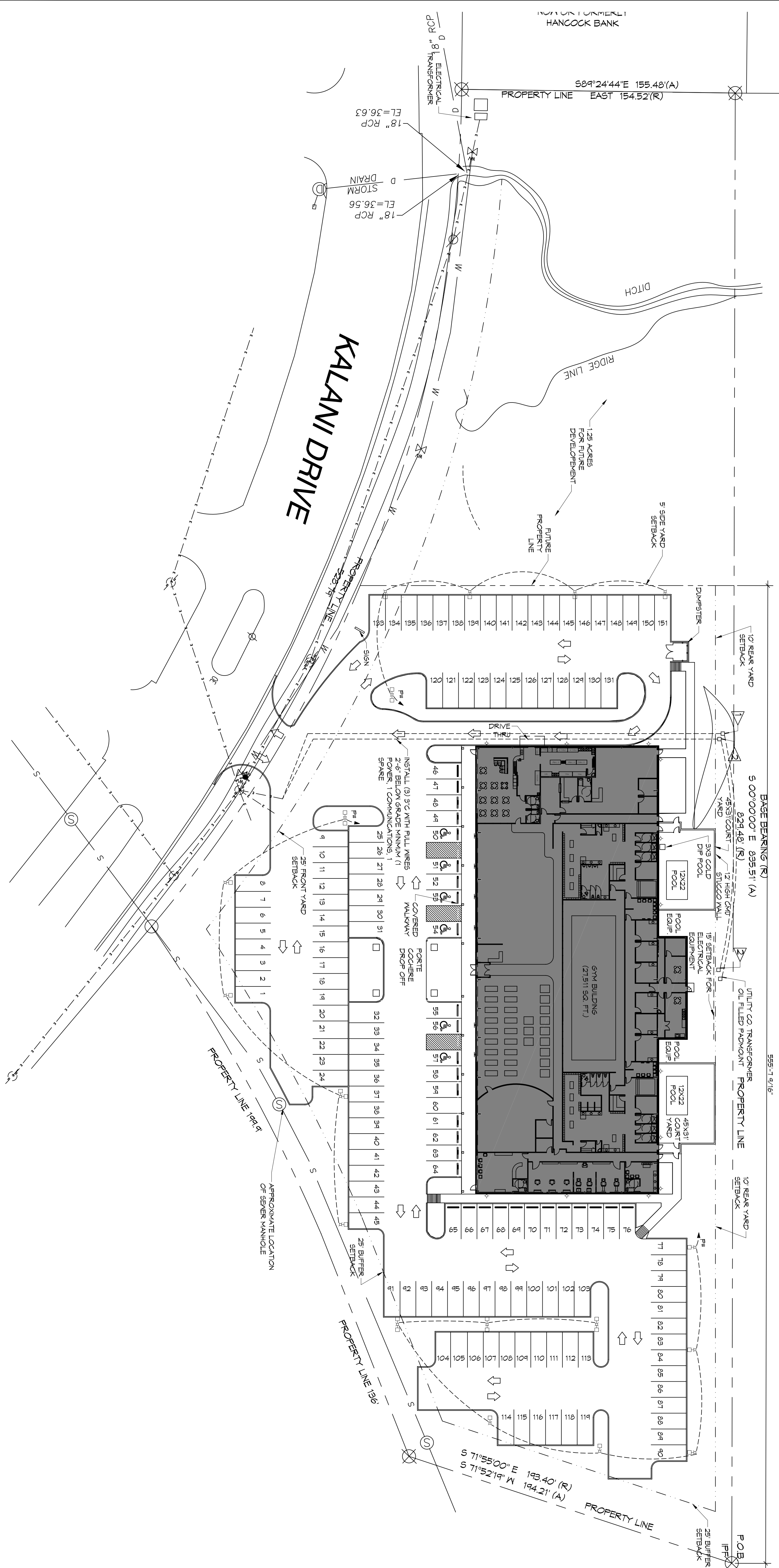


SCALE: 1" = 30'-0"

SITE PLAN



GENERAL NOTES

- 1 POWER JUNCTION BOX 36"x36" CAST POLYMER CONCRETE IN GROUND JUNCTION BOX
 - 2 COMMUNICATION JUNCTION BOX 24"x24" CAST POLYMER CONCRETE IN GROUND JUNCTION BOX
- FIGURES:
- 28POLY MOUNTED LIGHT 4800K, 1800MM TYPE 4 BEAM EATON RECALL #RVL460-D-JNY-FL48T, 15900 LUMENS, 165A
 - MALL MOUNTED LIGHT FIXTURE MALL PACK WITH PHOTOCELL, EATON

DAMMON
ENGINEERING, INC.
LOUISIANA & MISSISSIPPI

Chief Engineer: Brian Mistich, PE
554 Old Spanish Trail
Slidell, LA 70458
www.dammonengineering.com
info@dammonengineering.com
PH: 985.649.5832

REVISIONS		DATE
#	DESCRIPTION	

A NEW FACILITY CALLED
PRESTIGE FITNESS CLUB AND SPA

KALANI DRIVE
HANGCOCK COUNTY, MISSISSIPPI

JOB No: 2304 DATE: JULY 10, 2017

DRAWN BY: CKD CHECKED BY: CKD

For other drawings and specifications, design and materials represented hereby and that remain the property of Dammon Engineering, and no part thereof shall be copied, reproduced, or used in connection with any work or project other than the specific project for which they have been prepared and developed without written consent of Dammon Engineering. Final drawings with their drawings or specifications shall constitute the entire and exclusive evidence of agreement of these conditions.

SHEET TITLE:
SITE PLAN

DRAWING NUMBER:
E100

SHEET NO.
- OF #