

MIN-SPLIT SCHEDULE										
AIR HANDLER					OUTDOOR UNIT					
Tag	Make/Model	Cooling (MBH)	Heating (BTUH)	Remarks	Tag	Make/Model	Rated Capacity (MBH)	Power VAC PH	AMPS	Remarks
MS-1	Daikin FTXR09	9	9,000	1, 2, 3	CU-1	Daikin RMXS48	48	208 1	30	1
MS-2	Daikin FTXR09	9	9,000	1, 2						
MS-3	Daikin FTXR09	9	9,000	1, 2						
MS-4	Daikin FTXR12	12	12,000	1, 2						

NOTES:  
 1 Install per Manufacturer's recommendations  
 2 Provide new filters after commissioning and final acceptance.  
 3 Furnish with condensate pump removal kit and pan "Safe-T" float switch

SPLIT SYSTEM HEAT PUMP SCHEDULE																							
AIR HANDLER										HEAT PUMP													
TAG	AREA SERVED	TRANE AIR HANDLER MODEL NO.	NOMINAL TONS	TOTAL CFM	OA CFM	COOLING				Motor HP	ESP (" WC)	AUX. HEAT KW	POWER			MCA	TAG	TRANE HEAT PUMP MODEL NO.	POWER			RLA	REMARKS
						TMBH	SMBH	EDB	EWB				VAC	PH	Hz				VAC	PH	Hz		
AHU-1	Gym	TWE240B3	20	8700	1270	221.3	151.6	74.1	65.6	5	0.6	14.9	208	3	60	64	CU-1	TWA240B3	Single Point Connection			1, 2, 3, 4	
AHU-2	Physical Therapy	TWE090A3	7.5	2910	460	88.8	61.2	77.2	66.7	1.5	0.4	7.5	208	3	60	37	CU-2	TWA090A3	Single Point Connection			1, 2, 3, 4	
AHU-3	P.J.'s Coffee	TWE090A3	7.5	2700	160	72.7	62.9	79.6	65.6	1.5	0.4	7.5	208	3	60	37	CU-3	TWA090A3	Single Point Connection			1, 2, 3, 4	
AHU-4	Reception	4TWA4060	5	1970	280	58.1	41	77.5	66.7	1/2	0.4	5.7	208	1	60	43	CU-5	4TWA4060	208	3	60	7.1	1, 2, 3, 4

NOTES:  
 1 Cooling capacities to be rated in accordance with AHRI standard 210/290 for ASHRAE standard design weather conditions in New Orleans, LA.  
 2 Provide inlet filter box, time delay relay, condensate overflow switch & programmable 7/24 thermostat with lockable cover.  
 3 Install units in accordance with manufacturer's recommendations.  
 4 Provide new filters after commissioning and final acceptance.

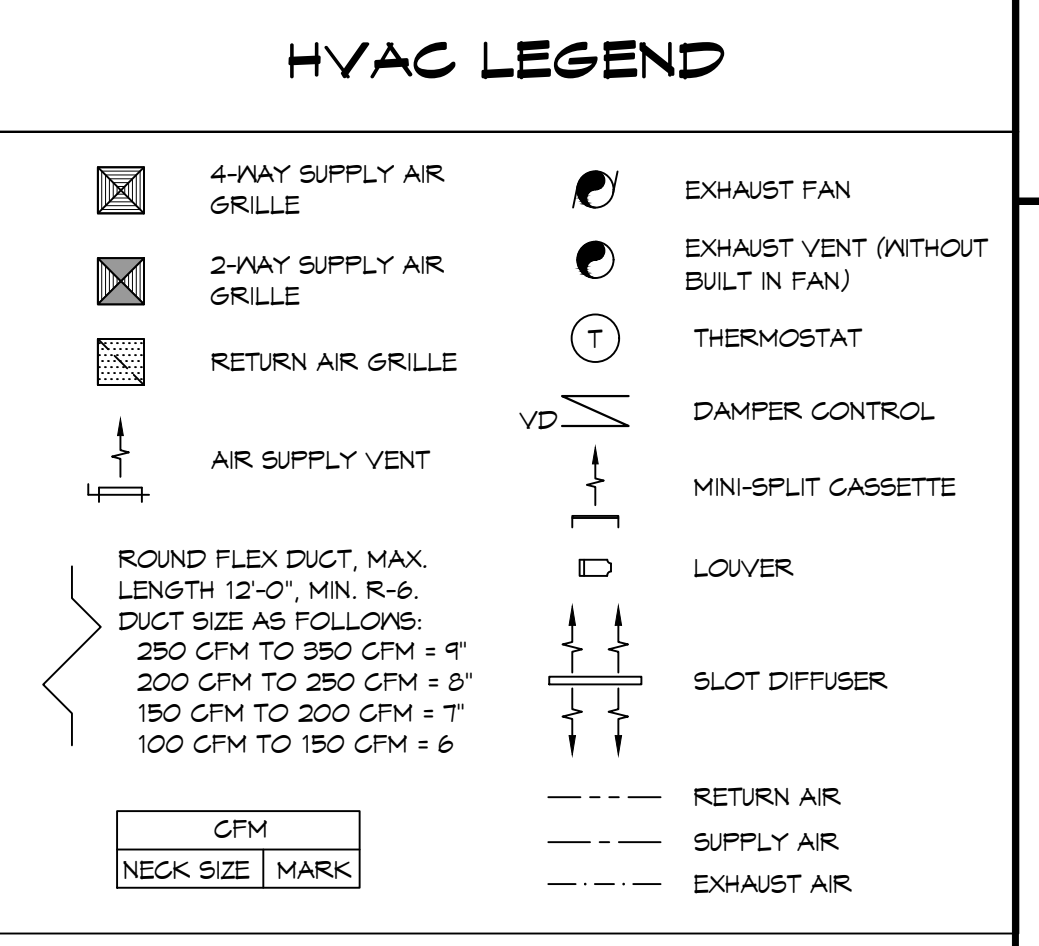
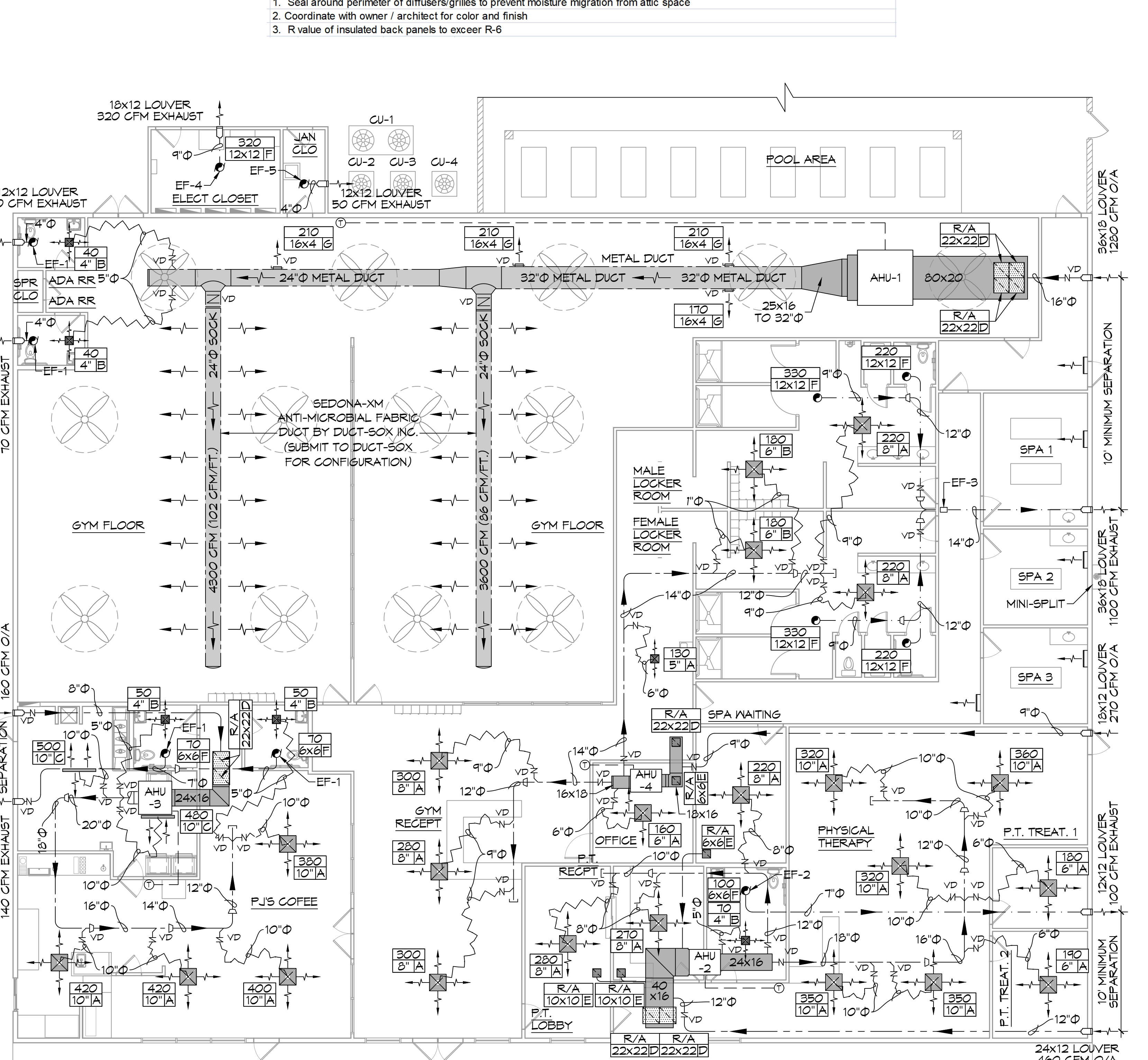
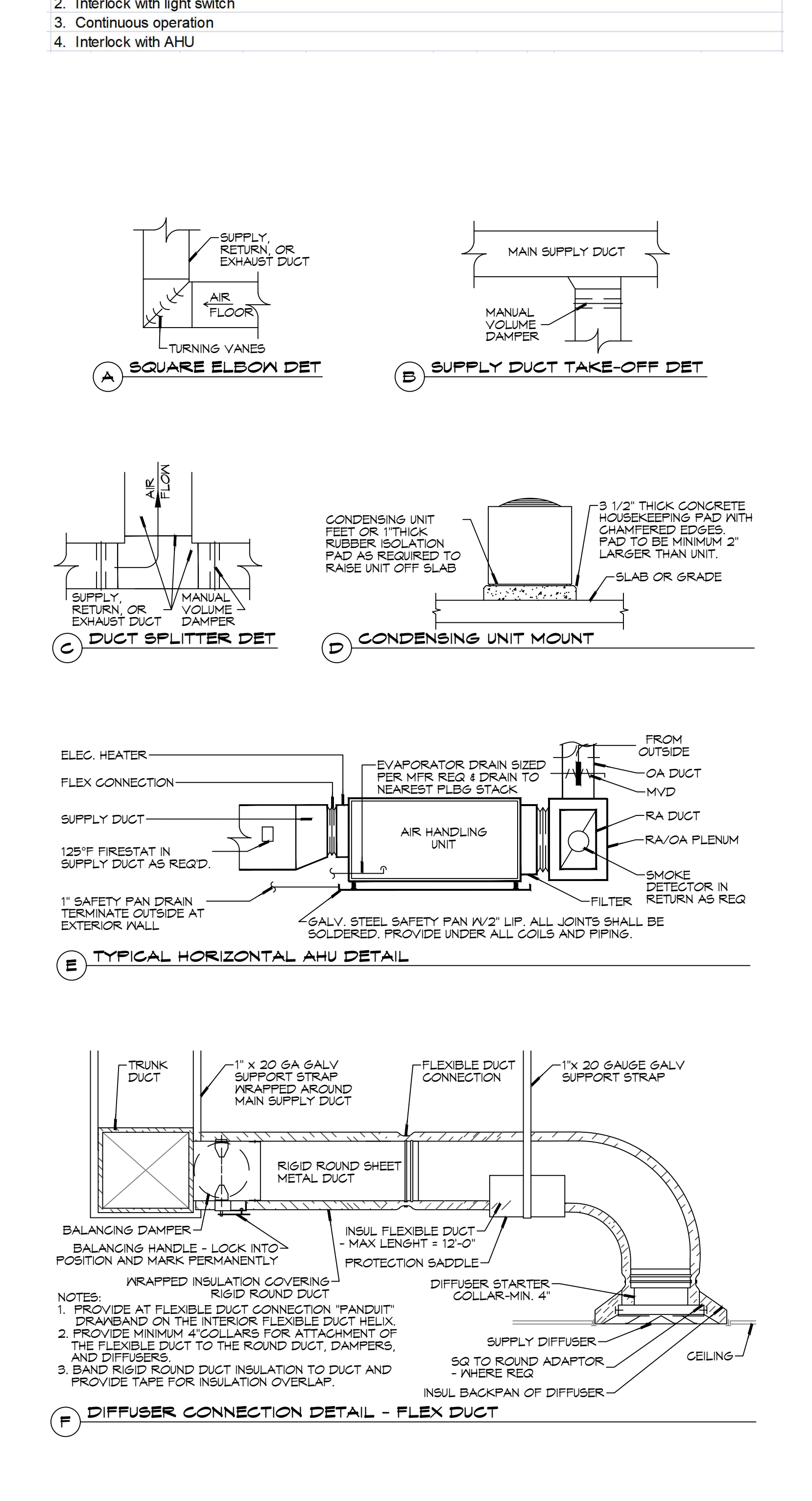
EXHAUST FAN SCHEDULE									
TAG	FAN			POWER			MAKE / MODEL	REMARKS	
	AIRFLOW (CFM)	TSP (" wc)	AMPS	TYPE	VAC	PH			Hz
EF-1	70	0.2	0.4	Ceiling Exhaust	120	1	60	Broan A80	1, 2
EF-2	100	0.2	0.4	Ceiling Exhaust	120	1	60	Broan A110	1, 2
EF-3	1100	0.3	3.6	In-Line Centrifugal	120	1	60	Dayton 2RB87	1, 4
EF-4	320	0.2	4.4	Ceiling Exhaust	120	1	60	Greenheck SP-A710	1, 3
EF-5	50	0.1	0.9	Ceiling Exhaust	120	1	60	Broan 696N	1, 2

NOTES:  
 1. Install per manufacturer's recommendations  
 2. Interlock with light switch  
 3. Continuous operation  
 4. Interlock with AHU

DIFFUSER SCHEDULE				
TAG	SERVICE	NECK SIZE	DESCRIPTION	
A	Supply Air	Ref. Plan	12" x 12" Adjustable Square Cone Diffuser, Price ASCDA w/ Insulated Back Panel	
B	Supply Air	Ref. Plan	12" X 12" Perforated, Ducted Return, Titus PAR	
C	Supply Air	Ref. Plan	4" Adjustable Double Deflection Louver w/ Damper, Price Series 520D	
D	Exhaust	Ref. Plan	24" X 24" Perforated, Ducted Return, Titus PAR	

Notes:  
 1. Seal around perimeter of diffusers/grilles to prevent moisture migration from attic space  
 2. Coordinate with owner / architect for color and finish  
 3. R value of insulated back panels to exceed R-6

- ### HVAC NOTES
- CONCEALED DUCTWORK TO BE GALVANIZED SHEET METAL WRAPPED WITH FIBROUS GLASS DUCT WRAP WITH FSK VAPOR BARRIER, MIN R-6. INSTALLED PER SMACNA STANDARDS. DUCT WORK IMMEDIATELY DOWNSTREAM FROM RTU SHALL BE LINED FOR SOUND ATTENUATION.
  - EXPOSED DUCTWORK TO BE GALVANIZED SHEET METAL LINED WITH FIBROUS GLASS DUCT LINER, MIN R-6. INSTALLED PER SMACNA STANDARDS.
  - ROUND FLEXIBLE DUCT TO BE UL-181, CLASS 1, AIR DUCT MATERIALS.
  - DUCT SIZES SHOWN ARE CLEAR INSIDE DIMENSIONS.
  - IN ALL SYSTEMS OVER 2000 CFM AND LESS THAN 15,000 CFM, SMOKE DETECTORS SHALL BE INSTALLED IN ACCORDANCE WITH NFPA 72E IN THE RETURN DUCT DOWNSTREAM OF THE AIR HANDLING UNIT AND ALL FILTERS TO AUTOMATICALLY STOP THE FAN.
  - PROVIDE UL LISTED 125°F FIRESTAT IN RETURN AIR OF EACH SYSTEM UNDER 2000 CFM TO SHUT DOWN THE FAN IN THE EVENT OF FIRE.
  - PROVIDE UL RATED FIRE DAMPERS WHERE REQUIRED AT ALL DUCT PENETRATIONS OF FIRE RATED ASSEMBLIES AND WHERE REQUIRED BY CODE, INCLUDING OUTSIDE AIR INTAKES AND EXHAUST FANS.
  - CONDENSATE DRAINS TO BE PVC PIPE RUN TO PLUMBERS P-TRAP WITHIN FIVE FEET OF AIR HANDLING UNITS.
  - ALL AIR HANDLING SYSTEMS TO BE BALANCED TO ASSURE PROPER AIR FLOWS PER FANS.
  - ALL THERMOSTATS TO BE AUTOMATIC CHANGEOVER WITH HEAT SWITCH.
  - EXHAUST FAN SHALL BE CONTROLLED BY A SWITCH ON THE WALL IN THE SAME LOCATION AS LIGHT SWITCH(S). PROVIDE BACK DRAFT DAMPER.
  - PROVIDE AND INSTALL WATER PROOF GRILLE VENT IN PROPER ROOF LOCATION FOR PLUMBING FIXTURE EXHAUST.
  - ALL SUPPLY AIR VENTS SHALL BE EQUIPPED WITH AIR CONTROL DAMPERS AT THE REGISTER.
  - LOCATE OUTDOOR UNITS AS SHOWN ON ARCHITECTURAL DRAWINGS.
  - REFRIGERANT LINES SHALL BE SIZED BY UNIT MANUFACTURER AND INSTALLED ACCORDING TO MANUFACTURER'S INSTRUCTIONS.
  - FRESH AIR SHALL BE SUPPLIED TO EACH AIR HANDLER THROUGH EXTERIOR WALL DUCT SUPPLIED WITH A CONTROL DAMPER.
  - ALL ELECTRICAL, MECHANICAL, AND PLUMBING PENETRATING FIRE WALLS SHALL BE FIRE CAULKED. (PENETRATIONS THROUGH RATED CONSTRUCTION SHALL BE SEALED WITH A MATERIAL CAPABLE OF PREVENTING THE PASSAGE OF FLAMES AND HOT GASES WHEN TESTED IN ACCORDANCE WITH ASTM-E8-14).
  - ALL MECHANICAL SYMBOLS ARE DRAWN DIAGRAMMATICALLY. CONTRACTOR TO VERIFY WITH OWNER LOCATIONS OF VENTS, DAMPERS, REGISTERS, ETC.
  - FLEXIBLE DUCTWORK LENGTH NOT TO EXCEED 12'-0". SUPPORT FLEX DUCT TO PREVENT SAGGING.
  - REFER TO REFLECTED CEILING PLAN FOR FINAL GRILLE AND DIFFUSER LOCATIONS AND COORDINATE AS REQUIRED.
  - FINAL LOCATION OF TEMPERATURE CONTROLS TO BE COORDINATED WITH OWNER AT JOB SITE.
  - PROVIDE AND INSTALL SMOKE DETECTORS AS APPROVED BY LOCAL AHJ'S. PLACE NEAR R/A AND S/A OPENINGS OF AHU AND PROVIDE, WITH ACCESS PANEL, WIRING BY ELECTRICAL CONTRACTOR.
  - FRESH AIR INTAKES ARE REQUIRED TO HAVE MOTORIZED OR GRAVITY DAMPERS TO SHUT OFF WHEN SYSTEM IS NOT RUNNING.
  - PROVIDE BIRD SCREENS AT ALL EXTERIOR MECHANICAL PENETRATIONS.
  - COORDINATE WALL MOUNTED THERMOSTAT LOCATIONS WITH ALL OWNER FURNISHED ITEMS EITHER WALL MOUNTED OR FLOOR MOUNTED AGAINST PARTITIONS. REFER TO ARCHITECTURAL DRAWINGS.
  - SEE ROOF PLAN FOR ALL ROOF PENETRATIONS.
  - PROVIDE MIN 18 GA GALVANIZED SHEET METAL TO BLANK-OFF GABLE VENTS WHERE INTAKE/EXHAUST DUCTS OCCUR.



TYPICAL DETAILS  
 SCALE: N.T.S.

MECHANICAL PLAN  
 SCALE: 1/8" = 1'-0"

**DAMMON ENGINEERING, INC.**  
 LOUISIANA & MISSISSIPPI  
 Chief Engineer: Brian Mitchell, PE  
 554 Old Spanish Trail  
 Slidell, LA 70498  
 www.dammonengineering.com  
 info@dammonengineering.com  
 PH: 985-649-5832

NEW ATHLETIC CLUB  
 PRESTIGE FITNESS CLUB AND SPA

SHEET TITLE:  
 MECHANICAL PLAN

DRAWING NUMBER:  
 M101

SHEET No: 14 of