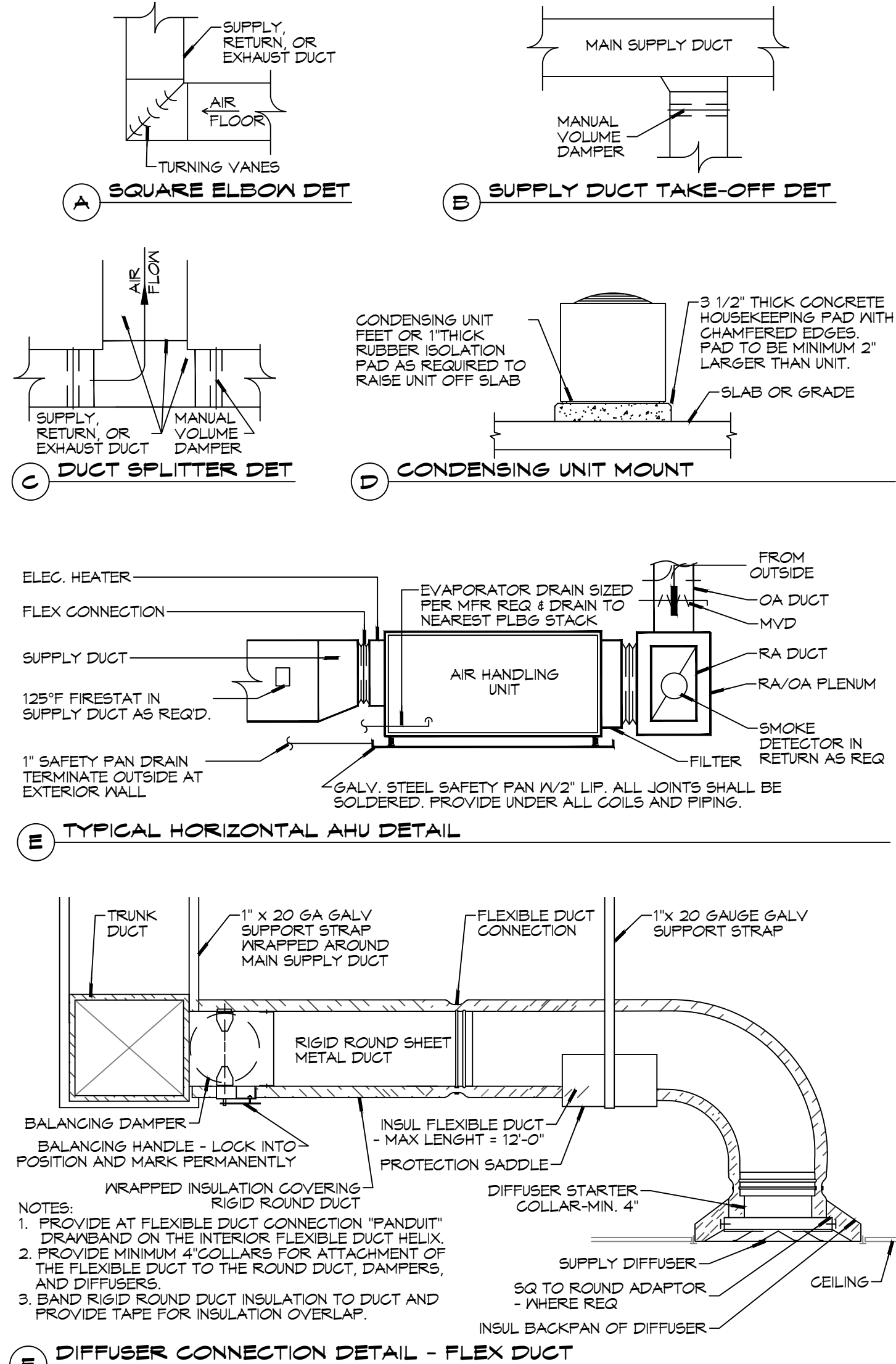


EXHAUST FAN SCHEDULE									
TAG	FAN			POWER			MAKE / MODEL	REMARKS	
	AIRFLOW (CFM)	TSP ("wc)	AMPS	VAC	PH	HZ			
EF-1	70	0.2	0.4	Ceiling Exhaust	120	1	60	Broan A80	1, 2

1. Install per manufacturer's recommendations
2. Interlock with light switch

DIFFUSER SCHEDULE				
TAG	SERVICE	NECK SIZE	DESCRIPTION	
A	SUPPLY AIR	REF. PLAN	24"x 24"	FIXED PATTERN PLAQUE, TITUS "OMNI" WITH DAMPER
B	SUPPLY AIR	REF. PLAN	12"x 12"	FIXED PATTERN PLAQUE, TITUS "OMNI" WITH DAMPER
C	SUPPLY AIR	REF. PLAN	24" x 2	SLOT LINEAR DIFFUSER, TITUS FL-10 WITH PLENUM & DAMPER
D				NOT USED
E				NOT USED
F	EXHAUST	REF. PLAN	12" X 12"	EGGCRATE, TITUS SERIES 50 WITH DAMPER

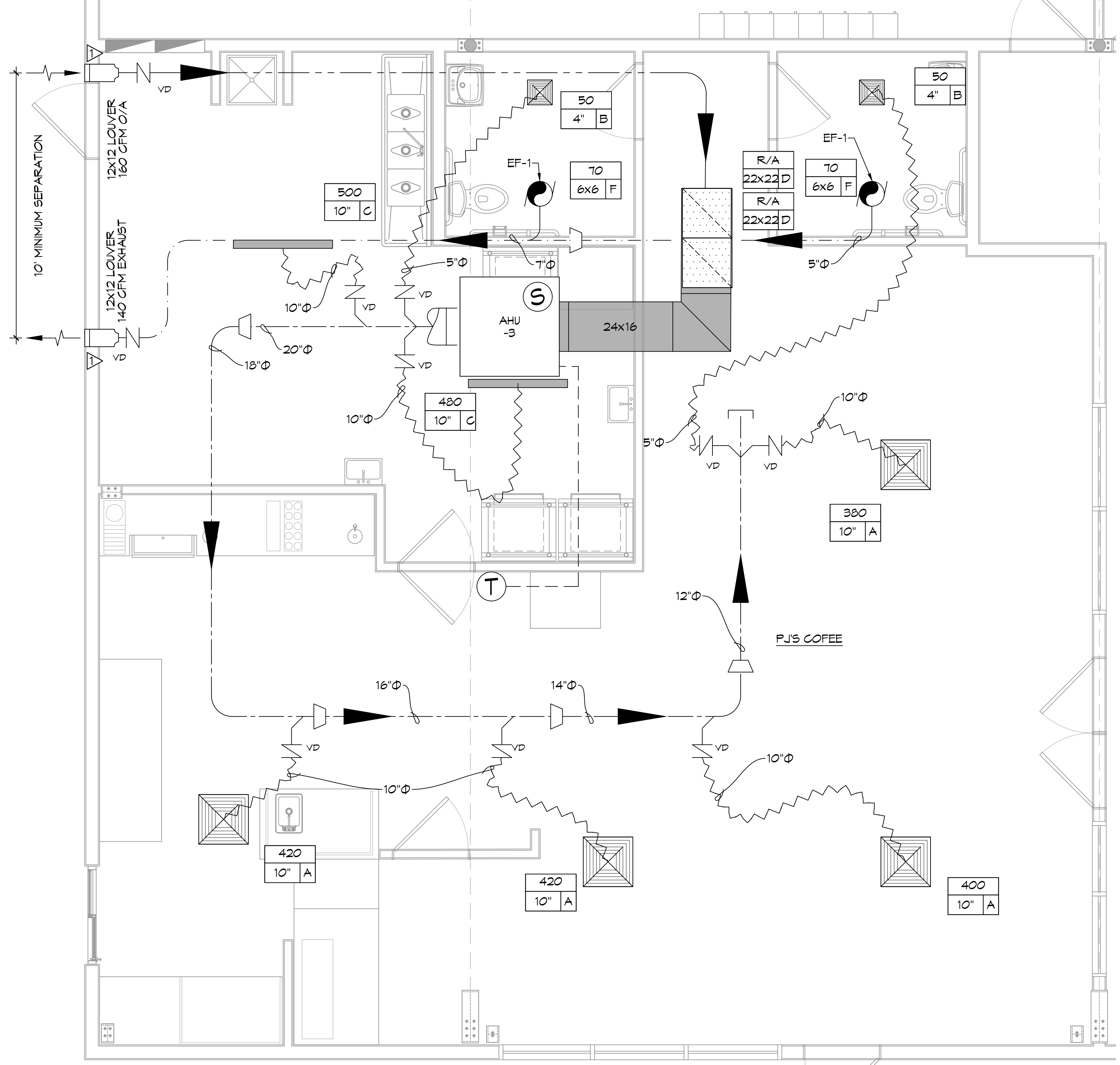
1. COORDINATE WITH OWNER FOR COLORS AND FINISH



TYPICAL DETAILS
SCALE: N.T.S.

SPLIT SYSTEM HEAT PUMP SCHEDULE																						
TAG	AREA SERVED	TRANE AIR HANDLER MODEL NO.	NOMINAL TONS	TOTAL CFM	OA CFM	COOLING				Motor HP	ESP (" WC)	AUX. HEAT KW	POWER			MCA	HEAT PUMP			RLA	REMARKS	
						TMBH	SMBH	EDB	EWB				VAC	PH	Hz		TAG	TRANE HEAT PUMP MODEL NO.	POWER			
																			VAC			PH
AHU-3	P.J.'s Coffee	TWE090A3	7.5	2700	160	72.7	62.9	79.6	65.6	1.5	0.4	7.5	208	3	60	37	CU-3	TWA090A3	Single Point Connection		1, 2, 3, 4	

- NOTES:
1. Cooling capacities to be rated in accordance with AHRI standard 210/290 for ASHRAE standard design weather conditions in New Orleans, LA.
 2. Provide inlet filter box, time delay relay, condensate overflow switch & programmable 7/24 thermostat with lockable cover.
 3. Install units in accordance with manufacturer's recommendations.
 4. Provide new filters after commissioning and final acceptance.

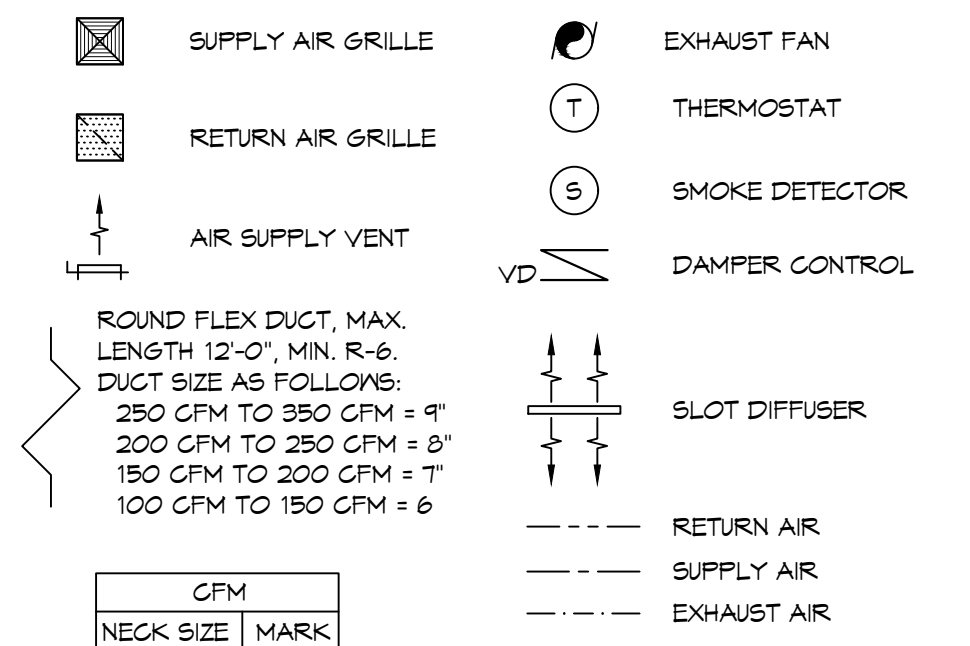


MECHANICAL PLAN
SCALE: 3/8" = 1'-0"

HVAC NOTES

1. CONCEALED DUCTWORK TO BE GALVANIZED SHEET METAL WRAPPED WITH FIBROUS GLASS DUCT WRAP WITH FSK VAPOR BARRIER, MIN R-6. INSTALLED PER SMACNA STANDARDS. DUCT WORK IMMEDIATELY DOWNSTREAM FROM RTU SHALL BE LINED FOR SOUND ATTENUATION.
2. EXPOSED DUCTWORK TO BE GALVANIZED SHEET METAL LINED WITH FIBROUS GLASS DUCT LINER, MIN R-6. INSTALLED PER SMACNA STANDARDS.
3. ROUND FLEXIBLE DUCT TO BE UL-181, CLASS 1, AIR DUCT MATERIALS.
4. DUCT SIZES SHOWN ARE CLEAR INSIDE DIMENSIONS.
5. IN ALL SYSTEMS OVER 2000 CFM AND LESS THAN 15,000 CFM, SMOKE DETECTORS SHALL BE INSTALLED IN ACCORDANCE WITH NFPA 72E IN THE RETURN DUCT DOWNSTREAM OF THE AIR HANDLING UNIT AND ALL FILTERS TO AUTOMATICALLY STOP THE FAN.
6. PROVIDE UL LISTED 125°F FIRESTAT IN RETURN AIR OF EACH SYSTEM UNDER 2000 CFM TO SHUT DOWN THE FAN IN THE EVENT OF FIRE.
7. PROVIDE UL RATED FIRE DAMPERS WHERE REQUIRED AT ALL DUCT PENETRATIONS OF FIRE-RATED ASSEMBLIES AND WHERE REQUIRED BY CODE, INCLUDING OUTSIDE AIR INTAKES AND EXHAUST FANS.
8. CONDENSATE DRAINS TO BE PVC PIPE RUN TO PLUMBERS P-TRAP WITHIN FIVE FEET OF AIR HANDLING UNITS.
9. ALL AIR HANDLING SYSTEMS TO BE BALANCED TO ASSURE PROPER AIR FLOWS PER PLANS.
10. ALL THERMOSTATS TO BE AUTOMATIC CHANGEOVER WITH HEAT SWITCH.
11. EXHAUST FAN SHALL BE CONTROLLED BY A SWITCH ON THE WALL IN THE SAME LOCATION AS LIGHT SWITCH(S). PROVIDE BACK DRAFT DAMPER.
12. PROVIDE AND INSTALL WATER PROOF GRILLE VENT IN PROPER ROOF LOCATION FOR PLUMBING FIXTURE EXHAUST.
13. ALL SUPPLY AIR VENTS SHALL BE EQUIPPED WITH AIR CONTROL DAMPERS AT THE REGISTER.
14. LOCATE OUTDOOR UNITS AS SHOWN ON ARCHITECTURAL DRAWINGS.
15. REFRIGERANT LINES SHALL BE SIZED BY UNIT MANUFACTURER AND INSTALLED ACCORDING TO MANUFACTURER'S INSTRUCTIONS.
16. FRESH AIR SHALL BE SUPPLIED TO EACH AIR HANDLER THROUGH EXTERIOR WALL DUCT SUPPLIED WITH A CONTROL DAMPER.
17. ALL ELECTRICAL, MECHANICAL, AND PLUMBING PENETRATING FIRE WALLS SHALL BE FIRE CAULKED. PENETRATIONS THROUGH RATED CONSTRUCTION SHALL BE SEALED WITH A MATERIAL CAPABLE OF PREVENTING THE PASSAGE OF FLAMES AND HOT GASES WHEN TESTED IN ACCORDANCE WITH ASTM-E8-14).
18. ALL MECHANICAL SYMBOLS ARE DRAWN DIAGRAMMATICALLY. CONTRACTOR TO VERIFY WITH OWNER LOCATIONS OF VENTS, DAMPERS, REGISTERS, ETC.
19. FLEXIBLE DUCTWORK LENGTH NOT TO EXCEED 12'-0". SUPPORT FLEX DUCT TO PREVENT SAGGING.
20. REFER TO REFLECTED CEILING PLAN FOR FINAL GRILLE AND DIFFUSER LOCATIONS AND COORDINATE AS REQUIRED.
21. FINAL LOCATION OF TEMPERATURE CONTROLS TO BE COORDINATED WITH OWNER AT JOB SITE.
22. PROVIDE AND INSTALL SMOKE DETECTORS AS APPROVED BY LOCAL AHJ'S. PLACE NEAR R/A AND S/A OPENINGS OF AHU AND PROVIDE, WITH ACCESS PANEL, WIRING BY ELECTRICAL CONTRACTOR.
23. FRESH AIR INTAKES ARE REQUIRED TO HAVE MOTORIZED OR GRAVITY DAMPERS TO SHUT OFF WHEN SYSTEM IS NOT RUNNING.
24. PROVIDE BIRD SCREENS AT ALL EXTERIOR MECHANICAL PENETRATIONS.
25. COORDINATE WALL MOUNTED THERMOSTAT LOCATIONS WITH ALL OWNER FURNISHED ITEMS EITHER WALL MOUNTED OR FLOOR MOUNTED AGAINST PARTITIONS. REFER TO ARCHITECTURAL DRAWINGS.
26. SEE ROOF PLAN FOR ALL ROOF PENETRATIONS.
27. PROVIDE MIN 18 GA GALVANIZED SHEET METAL TO BLANK-OFF GABLE VENTS WHERE INTAKE/EXHAUST DUCTS OCCUR.

HVAC LEGEND



NOTES

1. RUSKIN HZ100 OR EQUAL EXTREME PERFORMANCE 6063T6 ALUMINUM LOUVER WITH SCREEN (AMCA 540 / 550)

DAMMON ENGINEERING, INC.
LOUISIANA & MISSISSIPPI
Chief Engineer: Brian Missetch, PE
554 Old Spanish Trail
Slidell, LA 70458
www.dammonengineering.com
info@dammonengineering.com
PH: 985-649-5832

REVISIONS	DATE	DESCRIPTION

Missing or in
File: ..\..\Bri
Sheet: 1

NEW ATHLETIC CLUB
P.J.'S COFFEE
4422 KALANI DRIVE
HANGCOCK COUNTY, MISSISSIPPI
JOB No: 02/24/2022
DRAWN BY: CKD
CHECKED BY: BAK
SHEET TITLE:
MECHANICAL PLAN
DRAWING NUMBER:
M101
SHEET No: 6 of 11