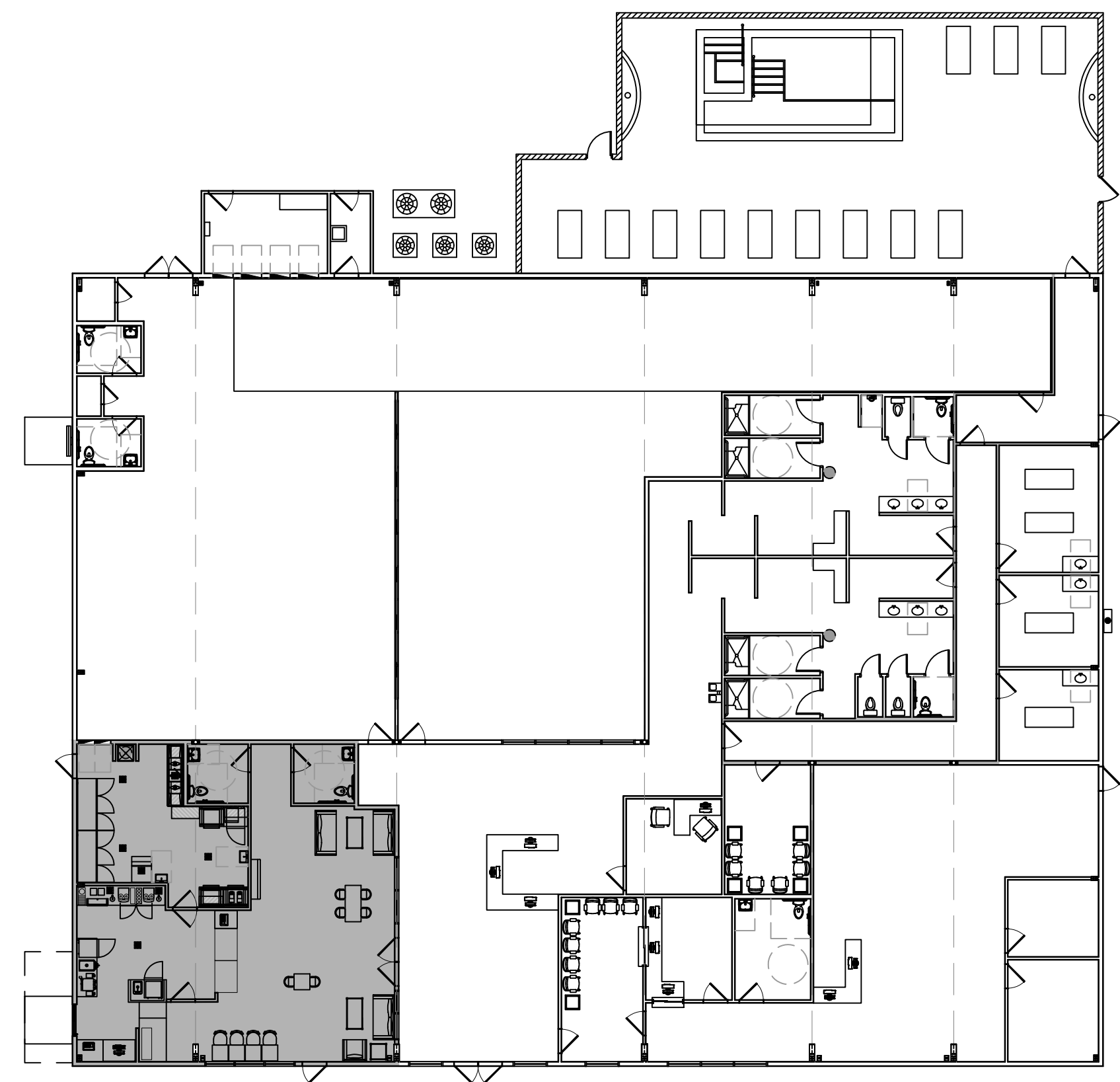


FILE NAME: \\s:\projects\2022\2022-0001 - PJ's Coffee - 2022.dwg DATE: 04/27/2022 11:14:14



PJ'S COFFEE BUILD-OUT WITHIN  
PRESTIGE FITNESS AND SPA

SHEET INDEX	
SHEET #	SHEET TITLE
G001	GENERAL PROJECT AND BUILDING CODE INFORMATION
A101	FLOOR PLAN
A102	REFLECTED CEILING PLAN
A103	INTERIOR ELEVATION PLAN
A104	INTERIOR ELEVATION DETAILS
A105	FINISH FLOOR PLAN
P101	PLUMBING PLAN
M101	MECHANICAL PLAN
E101	POWER PLAN
E102	LIGHTING PLAN
E103	POWER PANEL

- GENERAL NOTES**
- ALL MATERIALS AND WORK, INCIDENTAL TO THE CONSTRUCTION OF THIS PROJECT, SHALL CONFORM TO ALL GOVERNING CODES, AND REGULATIONS OF AGENCIES IN AUTHORITY.
  - CONTRACTOR SHALL PROVIDE ALL PUBLIC PROTECTIONS NECESSARY AS REQUIRED BY LAW.
  - DO NOT SCALE DRAWINGS.** CONSULT WITH THE OWNER AND ENGINEER REGARDING ANY ITEMS IN THE CONTRACT DOCUMENTS THAT REQUIRE CLARIFICATION.
  - TRASH SHALL BE REMOVED FROM THE SITE NOT LESS THAN TWICE MONTHLY.
  - THE GENERAL CONTRACTOR SHALL VERIFY EXISTING CONDITIONS PRIOR TO COMMENCING WORK AND REPORT ANY AND ALL DISCREPANCIES TO THE ENGINEER.
  - CONTRACTOR VEHICLES AND EQUIPMENT NECESSARY FOR CONSTRUCTION MAY BE PARKED ON THE SITE. OTHER VEHICLES PARKED ON THE SITE REQUIRE THE OWNER'S PERMISSION.
  - NAMING A CERTAIN BRAND, MAKE OR MANUFACTURER IS TO DESIGNATE THE GENERAL STYLE, TYPE, CHARACTER AND QUALITY STANDARD OF THE PRODUCT DESIRED. SUBSTITUTION REQUESTS MUST BE APPROVED BY THE OWNER.
  - ALL MATERIALS/EQUIPMENT SHALL BE INSTALLED PER MANUFACTURER'S RECOMMENDATIONS. WORK NOT CONSISTENT WITH MANUFACTURER'S RECOMMENDATIONS WILL BE REJECTED BY OWNER/ENGINEER.

**DAMMON**  
ENGINEERING, INC.  
LOUISIANA & MISSISSIPPI

www.dammonengineering.com  
info@dammonengineering.com  
554 Old Spanish Trail  
Bossier, LA 70608  
PH: 985-649-5832

#	DESCRIPTION	DATE

SEAL:

NEW ATHLETIC CLUB

P J ' S C O F F E E

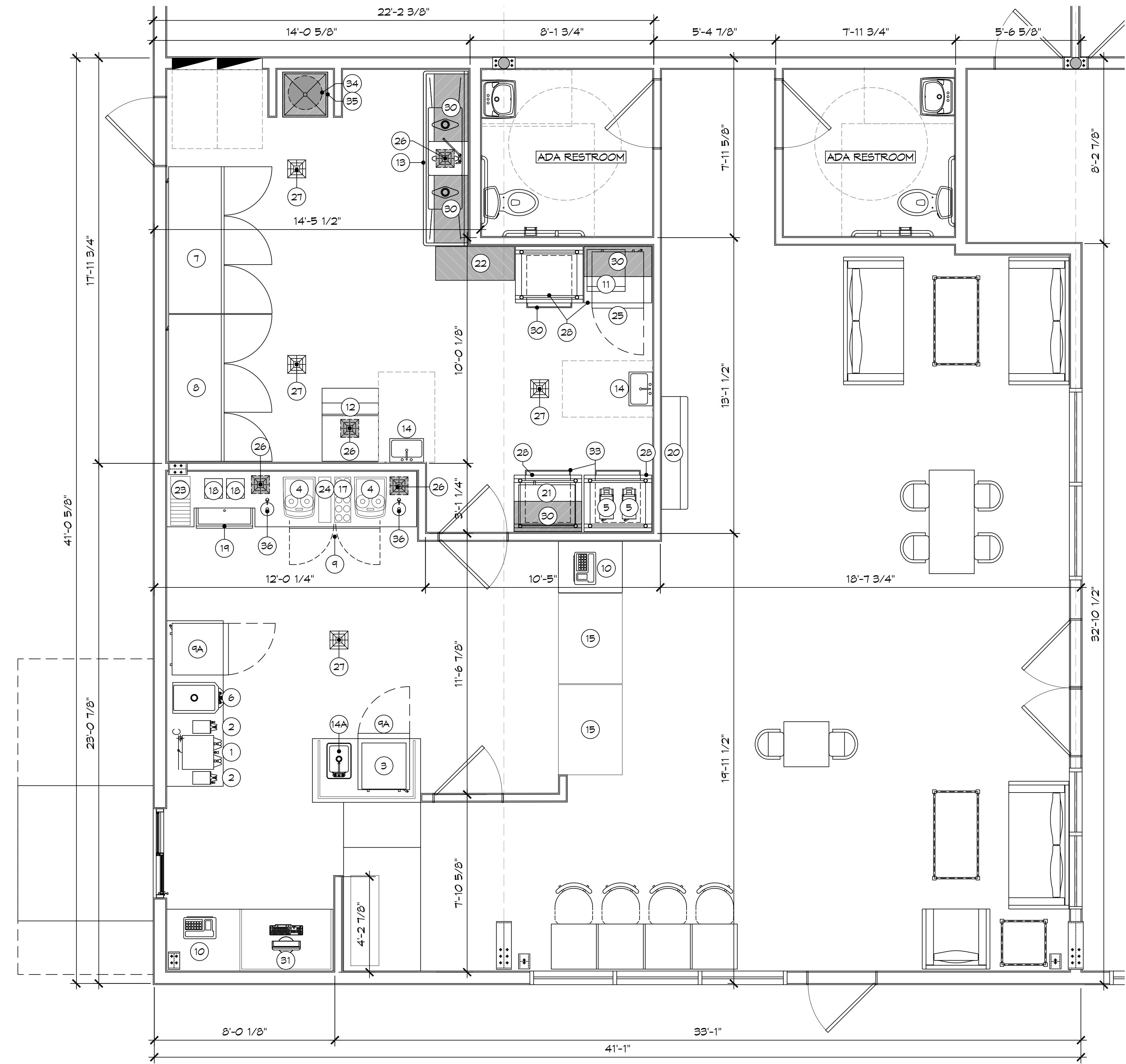
4422 KALANI DRIVE  
HANGCOCK COUNTY, MISSISSIPPI  
JOB No:      DATE: 04/27/2022  
DRAWN BY:      CHECKED BY:      EAM

SHEET TITLE:  
GENERAL INFORMATION SHEET

DRAWING NUMBER:  
G101

SHEET No: 1 of 11

FILE NAME: A:\Projects\2PJ's Coffee Shop\2PJ's Coffee Shop.dwg DATE: 04/27/2022 10:52:43 AM



**2PJ'S FLOOR PLAN**  
SCALE: 3/8" = 1'-0"

EQUIPMENT LIST		
ITEM No.	ITEM DESCRIPTION	NOTES
1	TWIN COFFEE BREWER	
2	SATELLITE WARMER STAND	
3	MERRY CHEF MICROWAVE OVEN	
4	ESPRESSO/CAPPUCCINO MACHINE	
5	COFFEE GRINDER	
6	GRANITA FROZEN DRINK MACHINE	
7	REACH-IN REFRIGERATOR	
8	REACH-IN FREEZER	
9	UNDERCOUNTER REFRIGERATOR	
10	P.O.S. SYSTEM	BY OWNER
11	VENTLESS FRYER (BEIGNET MACHINE)	
12	ICE MACHINE W/ BIN & FILTER	
13	THREE COMPARTMENT SINK 93" L.	
14	HAND SINK W/ FAUCET	
14A	DROP-IN SINK	
15	SELF-SERVE MERCHANDISER 48"L.	
16	SINGLE ROW SYRUP RACK	
17	SYRUP RACK-LARGE	BY OWNER
18	BLENDER	
19	ICE BIN	
20	RETAIL MERCHANDISE CASE 60"L. x 8'H.	SEE 7/A501
21	CONVECTION OVEN - HALF SIZE	
22	WIRE SHELVING	
23	BLENDER CONTAINER RINSER	
24	ROW OF CUPS	
25	UNDERCOUNTER FREEZER	
26	HUB DRAIN	SEE PLUMBING
27	FLOOR DRAIN	SEE PLUMBING
28	MOBILE WORKTABLE, 36"	
29	MOBILE WORK TABLE, 24"	
30	WALL SHELF, 36"	
31		
32	WATER FILTRATION SYSTEM	
33		
34	35GAL WATER HEATER ABOVE MOP SINK	SEE PLUMBING
35	MOP SINK W/ FAUCET	SEE PLUMBING
36	DIPPER WELL W/ FAUCET	
37	UNDER COUNTER SLIM JIM - TRASH CAN	
38	PICK UP/DROP OFF AREA	

**DAMMON ENGINEERING, INC.**  
LOUISIANA & MISSISSIPPI  
www.dammonengineering.com  
info@dammonengineering.com  
Chief Engineer: Brian A. Misch, PE  
554 Old Spanish Trail  
Slidell, LA 70468  
PH: 985.649.9332

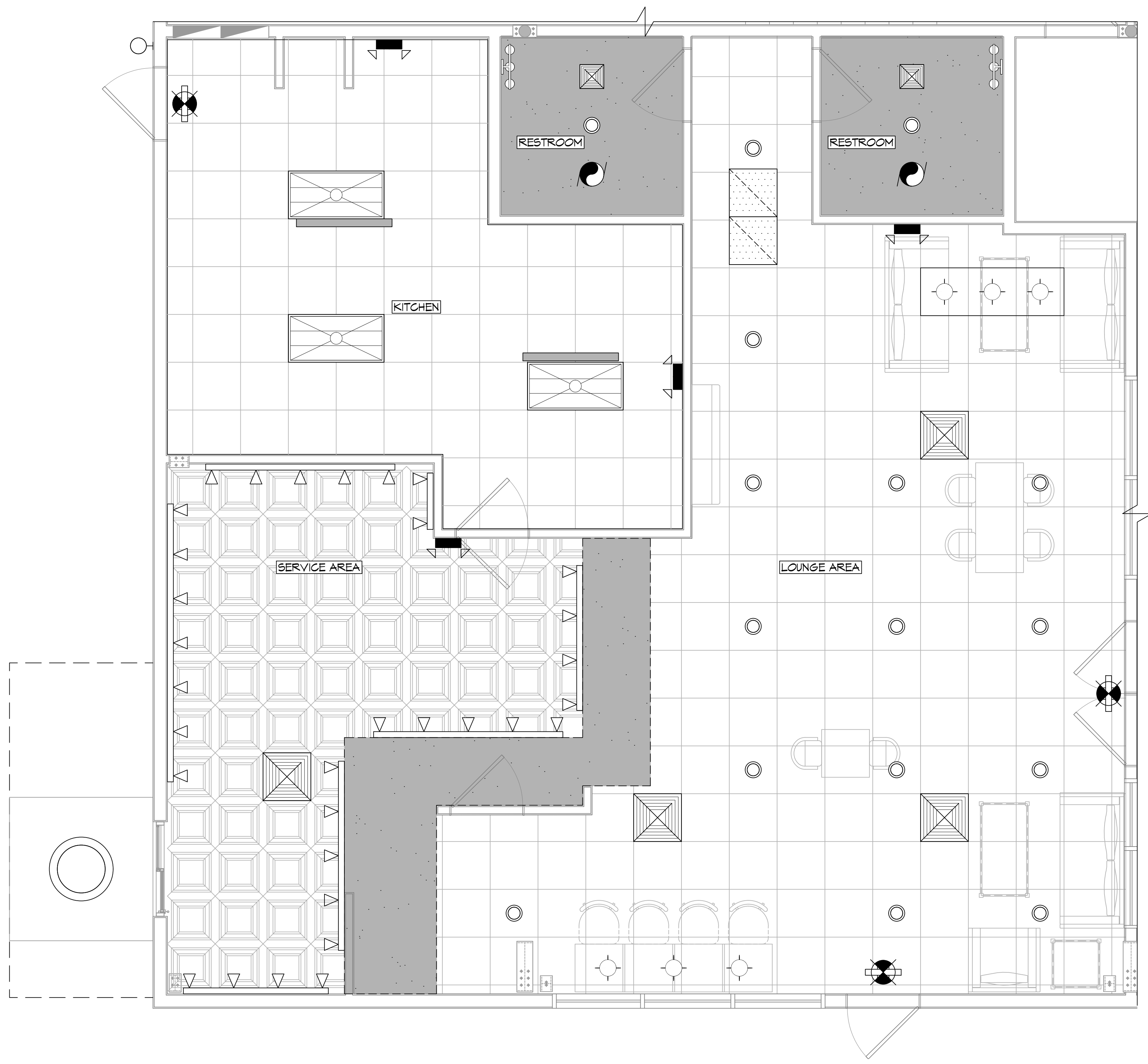
REVISIONS	DATE	DESCRIPTION



NEW ATHLETIC CLUB  
**P J'S COFFEE**  
4422 KALANI DRIVE  
HANGCOCK COUNTY, MISSISSIPPI  
JOB No: DATE: 04/27/2022  
DRAWN BY: BAW  
CHECKED BY: CKD

SHEET TITLE:  
FLOOR PLAN  
DRAWING NUMBER:  
**A101**  
SHEET No: 2 of 11

P:\Projects\2022\A102 - PJ's Coffee\A102 - PJ's Coffee.dwg, 04/27/2022, 11:13:11 AM, 1:1, Command: Plot, Plotter: HP DesignJet 500, Plot Style: HP-DesignJet500.ctb, Date: 04/27/2022, Time: 11:13:11 AM, User: bdammon



**PJ'S REFLECTED CEILING PLAN**  
SCALE: 3/8" = 1'-0"

**RCP NOTES**

1. ALL CEILING HEIGHTS INDICATED ON PLANS ARE FROM TOP OF FINISH FLOOR TO UNDERSIDE OF FINISH CEILING UNLESS OTHERWISE NOTED.
2. REFER TO PARTITION TYPES FOR WALL/PARTITION ASSEMBLY AND INFORMATION.
3. SEE SHEET E101 FOR LIGHT FIXTURE TYPES. SEE MECHANICAL DRAWINGS FOR DIFFUSER AND GRILLE TYPES.
4. PROVIDE ADEQUATE CLEARANCES FOR DUCTS AND RELATED APPURTENANT ITEMS NECESSARY TO MAINTAIN THE SPECIFIED CEILING HEIGHT ABOVE THE FINISH FLOOR FOR LIGHT FIXTURES.
5. PROVIDE HANGER AND SAFETY WIRE FOR LIGHT FIXTURES, SPEAKERS, AND AIR SUPPLY/RETURN DIFFUSERS (AS REQUIRED).
6. ALL ELEMENTS SUSPENDED FROM THE DECK THAT OVERHANGS A PEDESTRIAN WAY SHALL BE A MINIMUM OF 80 INCHES ABOVE THE WALKING SURFACE AS MEASURED FROM THE BOTTOM OF THE OBSTRUCTION.

**CEILING SCHEDULE**

ROOM NAME	CLNG HT	TYPE
PJ'S LOUNGE	10'-0"	2X2 TILE
PJ'S KITCHEN	10'-0"	2X2 HD BLACK TILE
PJ'S SERVICE	8'-0"	GYP SOFFIT
PJ'S RR	8'-0"	GYP BOARD

**RCP LEGEND**

SYM	DESCRIPTION
	2X2' SUSPENDED ACOUSTICAL CEILING TILE
	2X2' HEAVY DUTY BLACK CEILING TILE
	FUR DOWN CEILING
	GYPSON BOARD CEILING
	GYPSON SOFFIT
	HVAC RETURN AIR GRILL
	HVAC SUPPLY AIR DIFFUSER
	EXHAUST FAN
	EXIT LIGHT
	EMERGENCY WALL LIGHT
	LED FLUORESCENT LIGHT FIXTURE
	MIRROR LIGHT
	RECESSED LIGHT
	EXTERIOR LIGHT
	DECORATIVE PENDENT LIGHT
	TRACK LIGHT
	WALL SCONCE

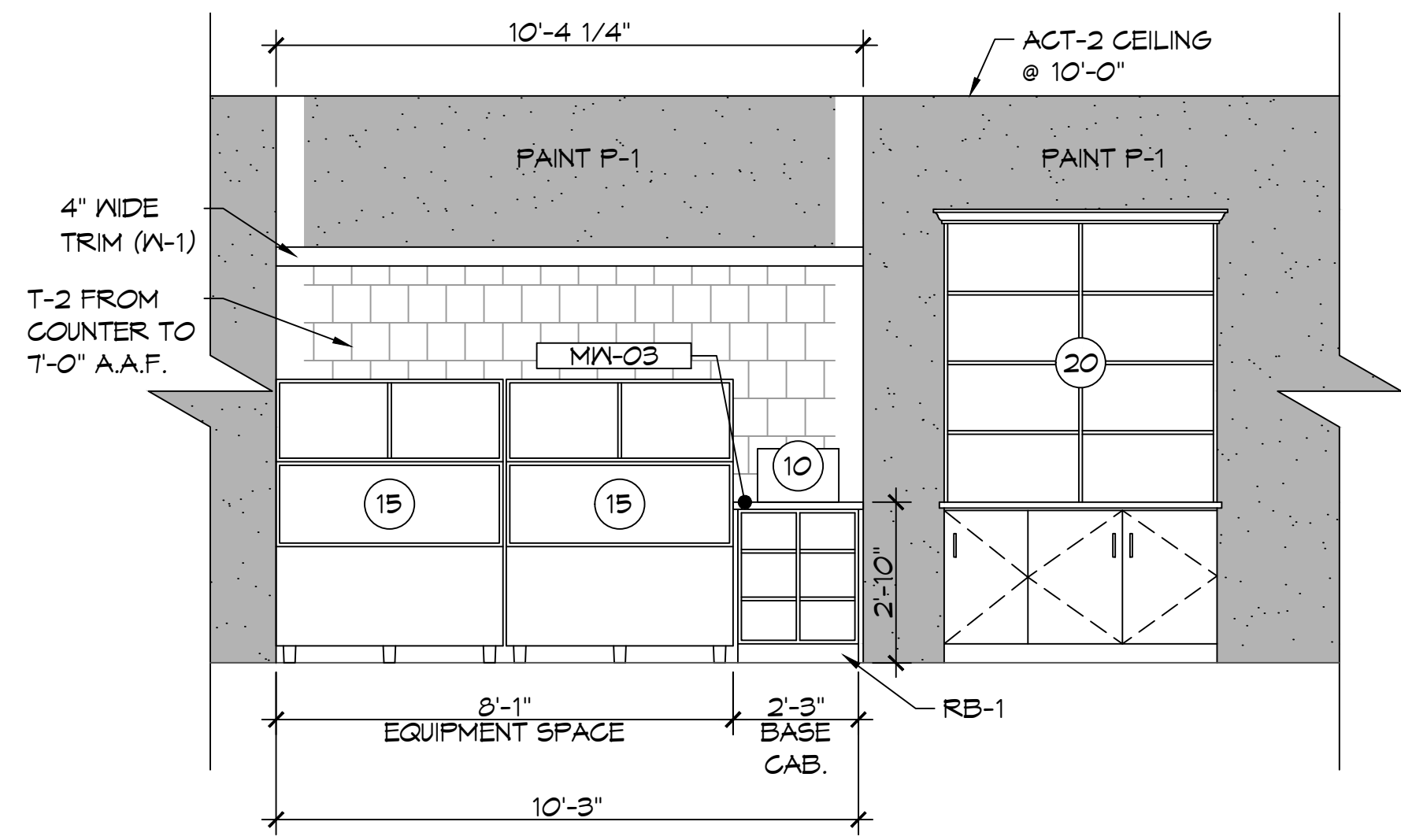
**DAMMON ENGINEERING, INC.**  
 LOUISIANA & MISSISSIPPI  
 www.dammonengineering.com  
 info@dammonengineering.com  
 554 Old Spanish Trail  
 Slidell, LA 70488  
 PH: 985.649.5832

REVISIONS	DATE
#	DESCRIPTION

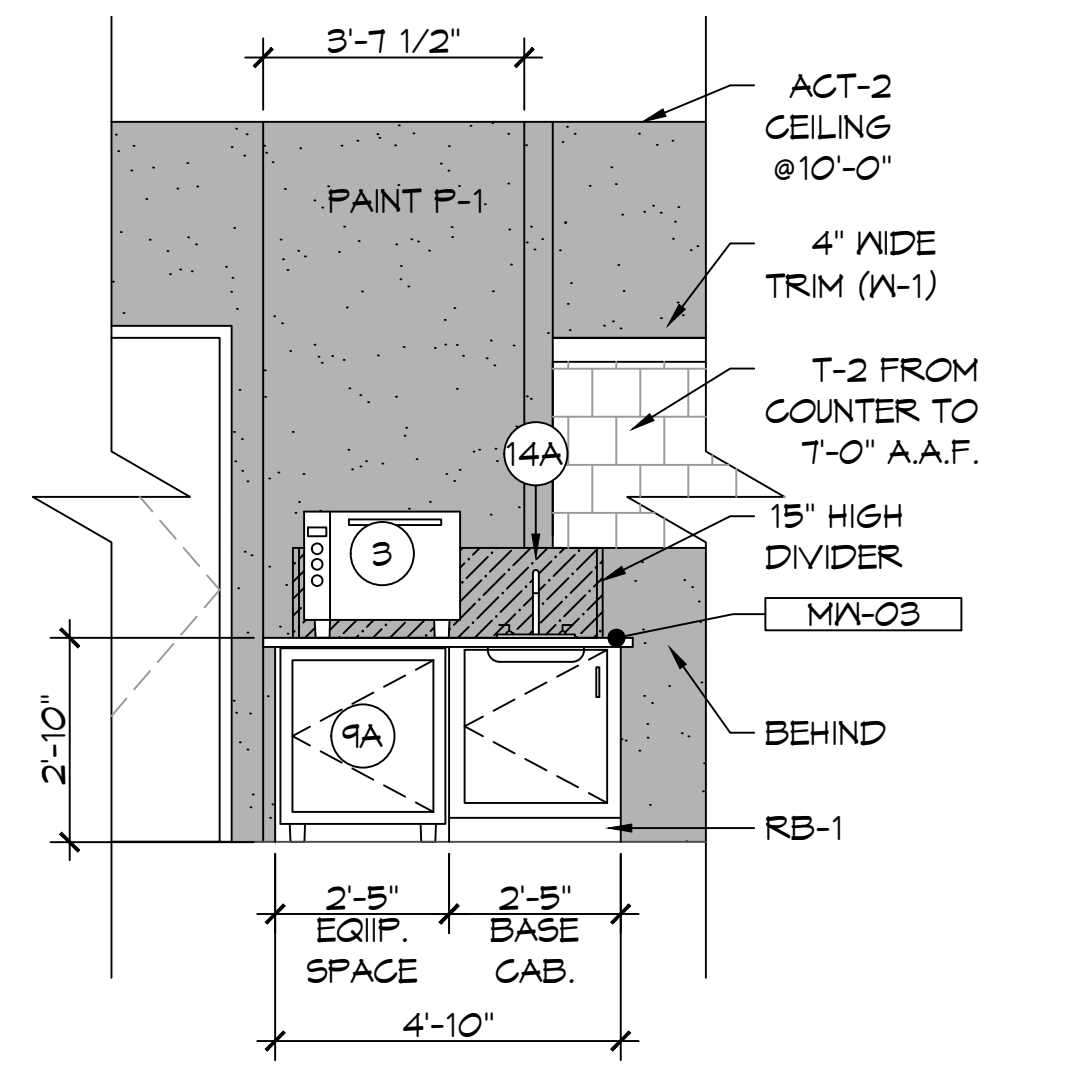


NEW ATHLETIC CLUB  
**PJ'S COFFEE**  
 4425 KALANI DRIVE  
 HANCOCK COUNTY, MISSISSIPPI  
 JOB No: BAKY  
 DATE: 04/27/2022  
 DRAWN BY: CKD  
 CHECKED BY:

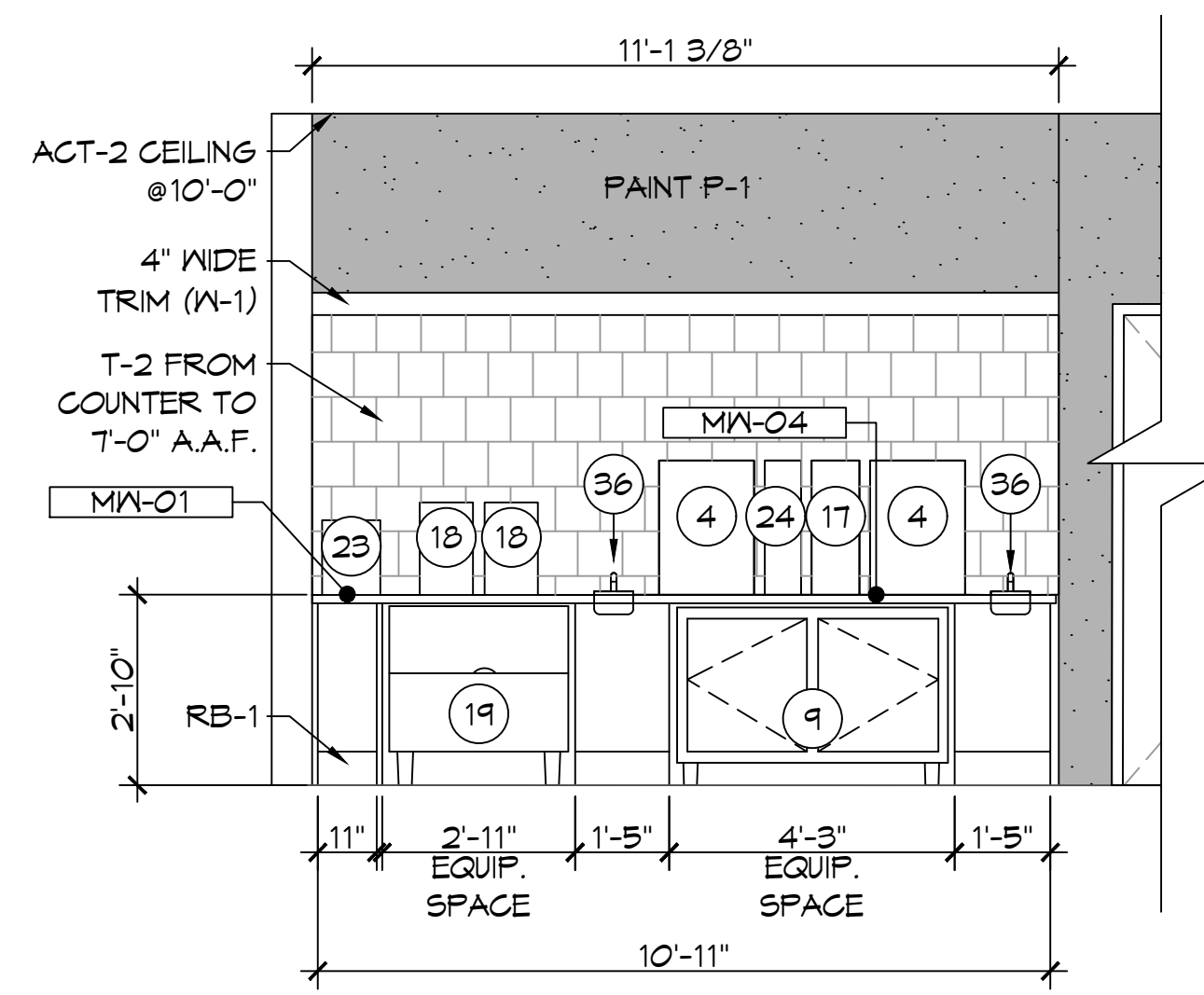
SHEET TITLE:  
 REFLECTED CEILING PLAN  
 DRAWING NUMBER:  
**A102**  
 SHEET No: 3 of 11



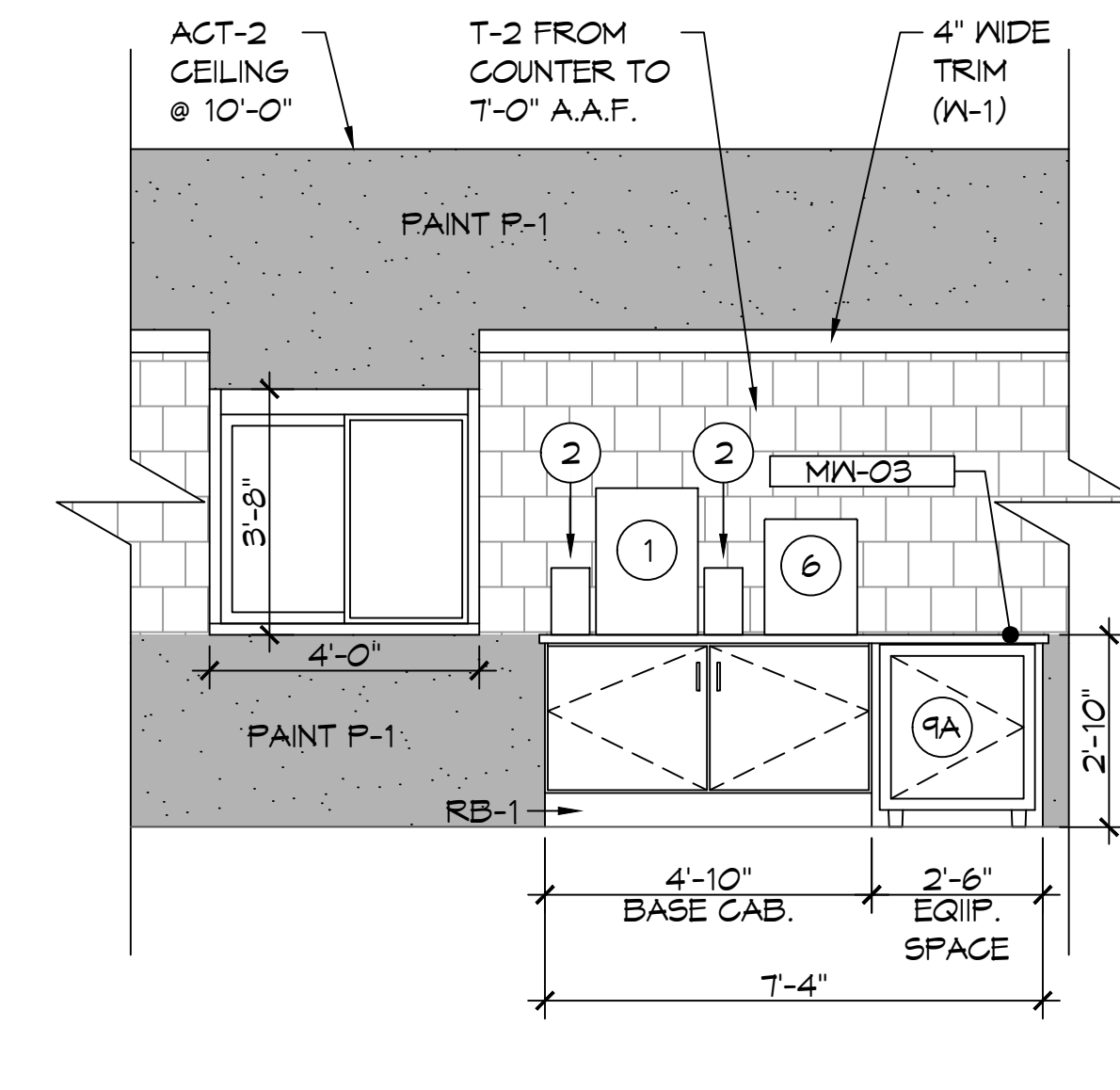
**A INTERIOR SECTION**  
 A107 | A107 SCALE: 3/8" = 1'-0"



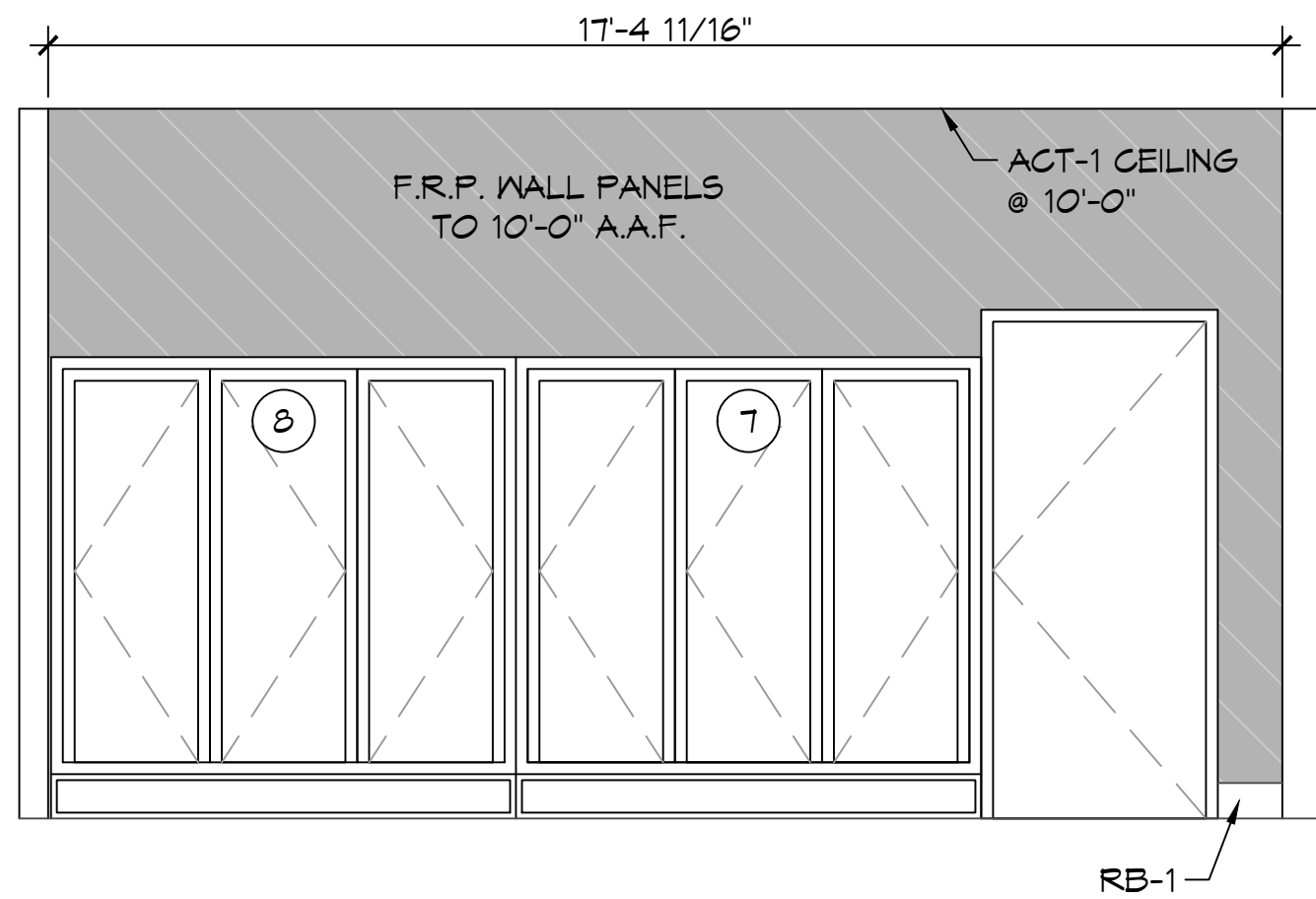
**B INTERIOR SECTION**  
 A107 | A107 SCALE: 3/8" = 1'-0"



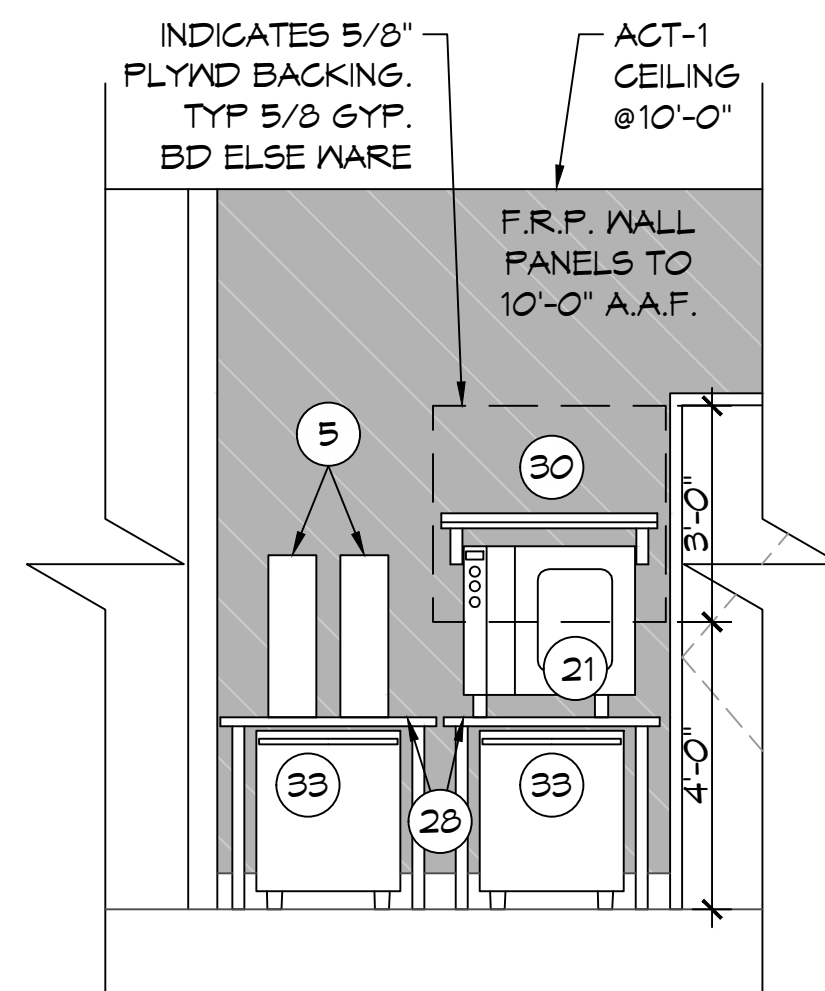
**C INTERIOR SECTION**  
 A107 | A107 SCALE: 3/8" = 1'-0"



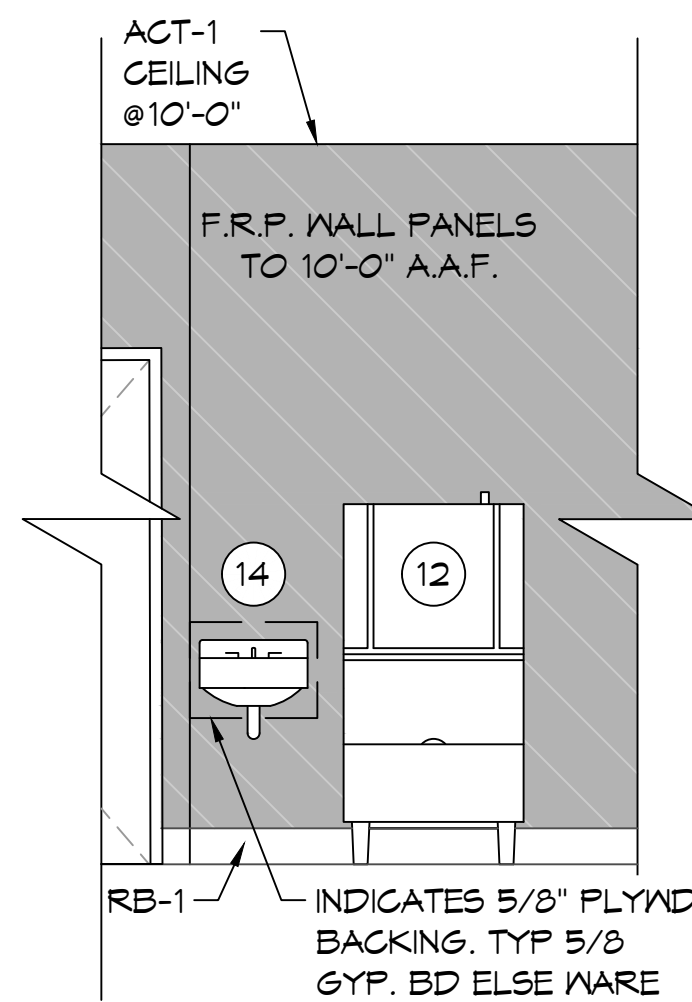
**D INTERIOR SECTION**  
 A107 | A107 SCALE: 3/8" = 1'-0"



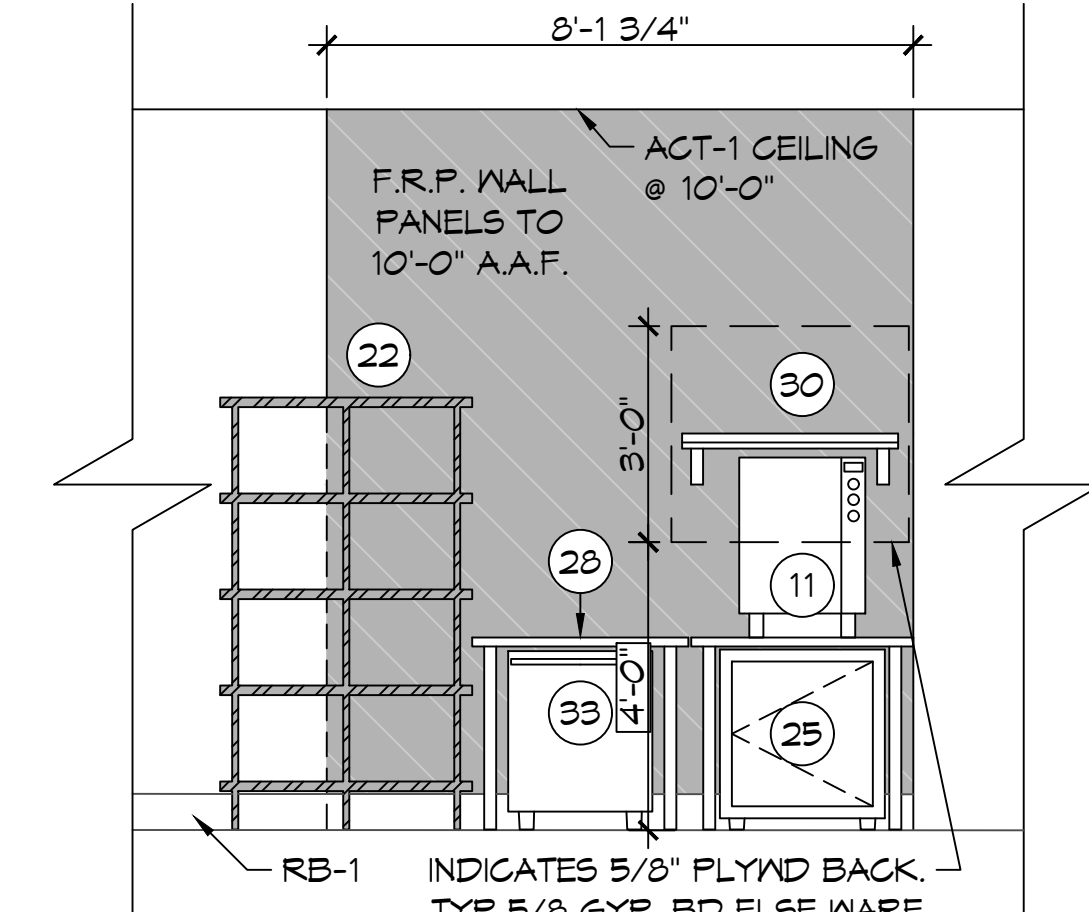
**E INTERIOR SECTION**  
 A107 | A107 SCALE: 3/8" = 1'-0"



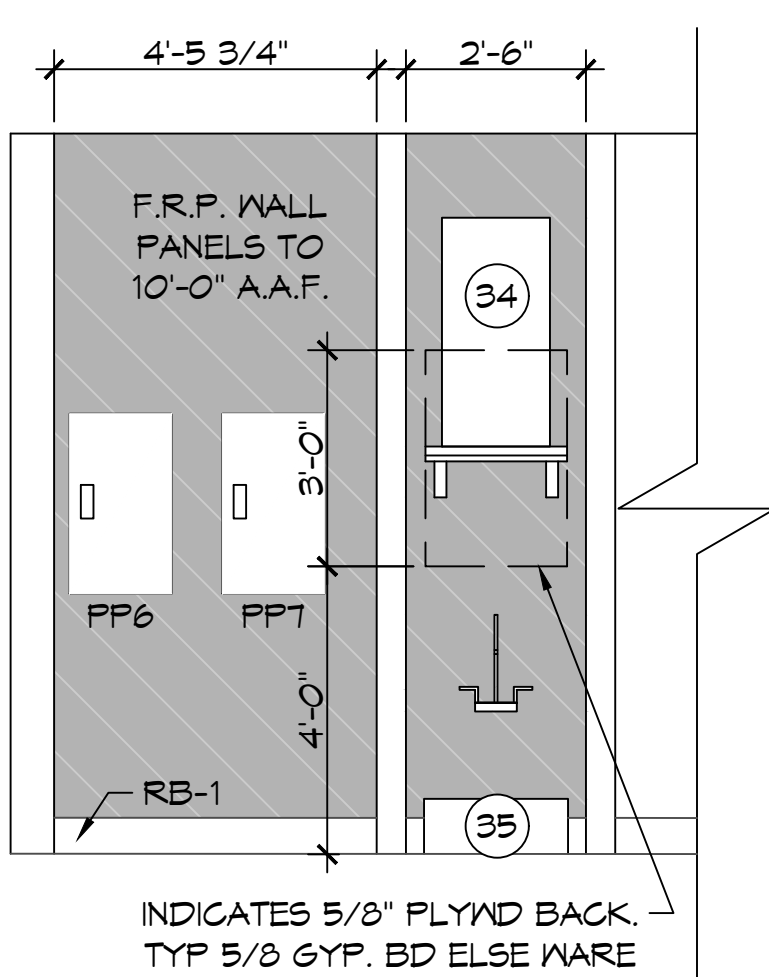
**F INTERIOR SECTION**  
 A107 | A107 SCALE: 3/8" = 1'-0"



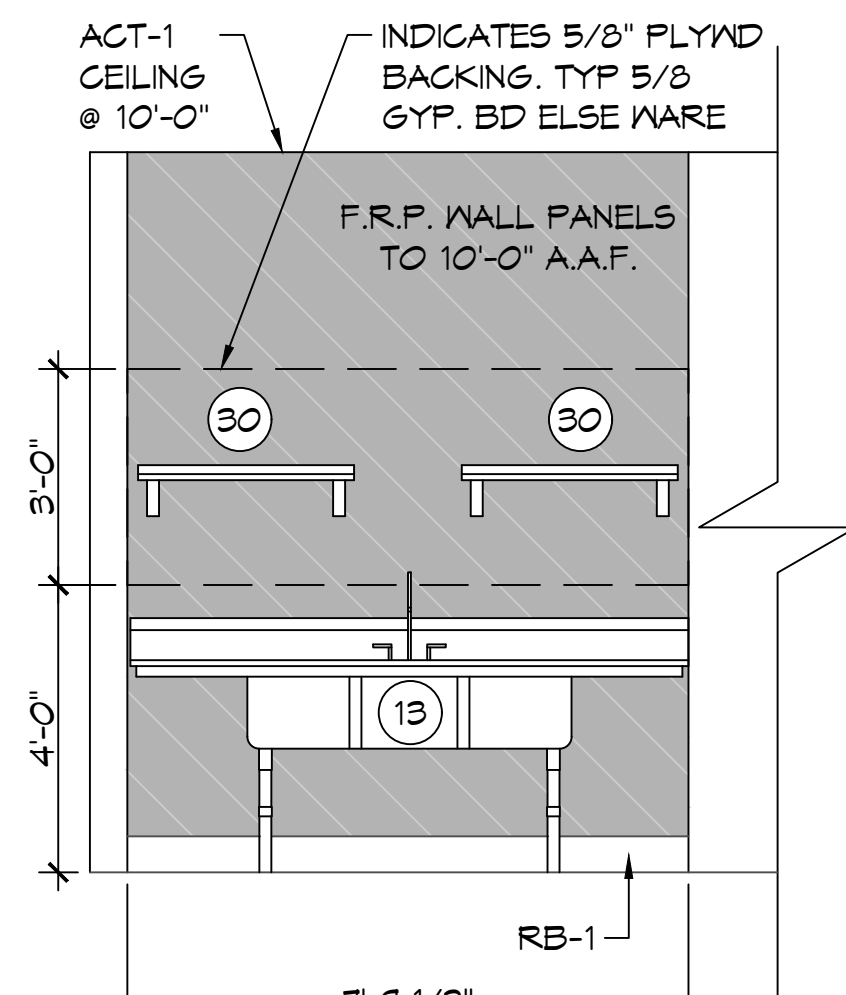
**G INTERIOR SECTION**  
 A107 | A107 SCALE: 3/8" = 1'-0"



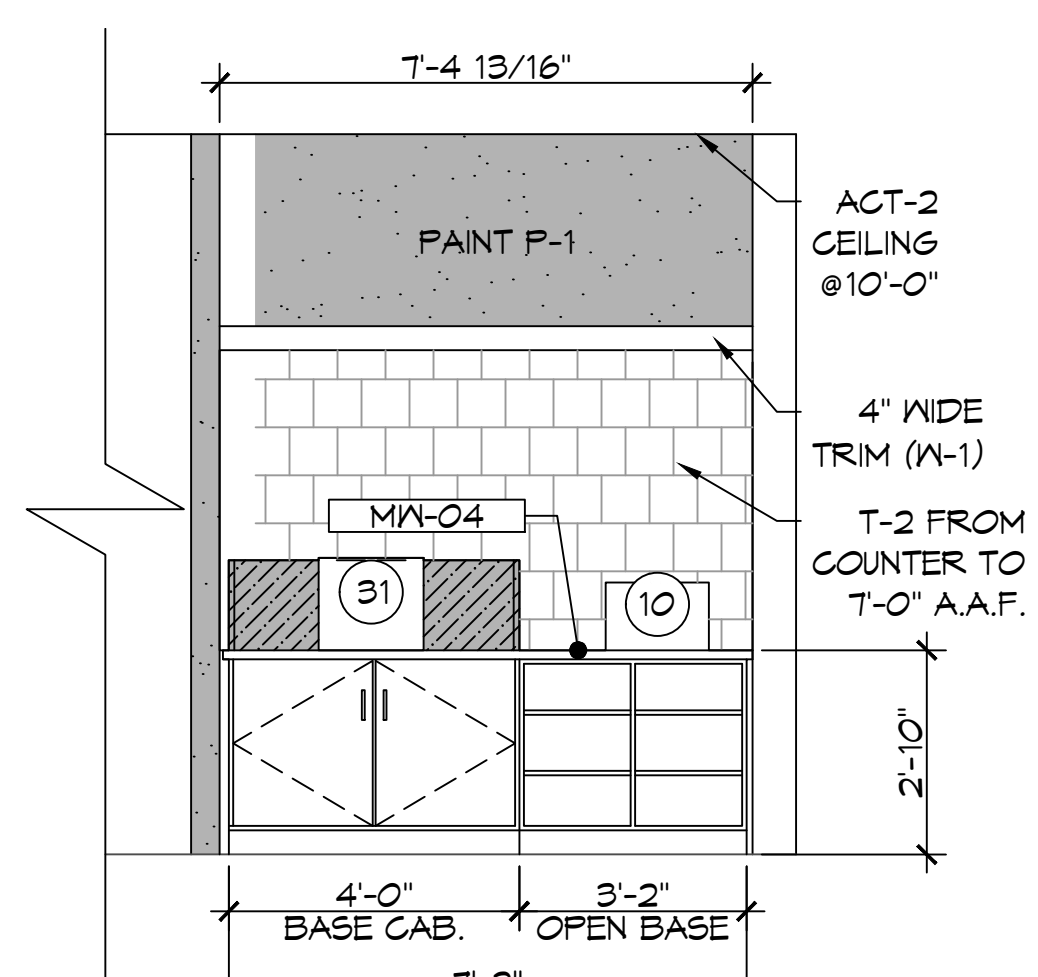
**H INTERIOR SECTION**  
 A107 | A107 SCALE: 3/8" = 1'-0"



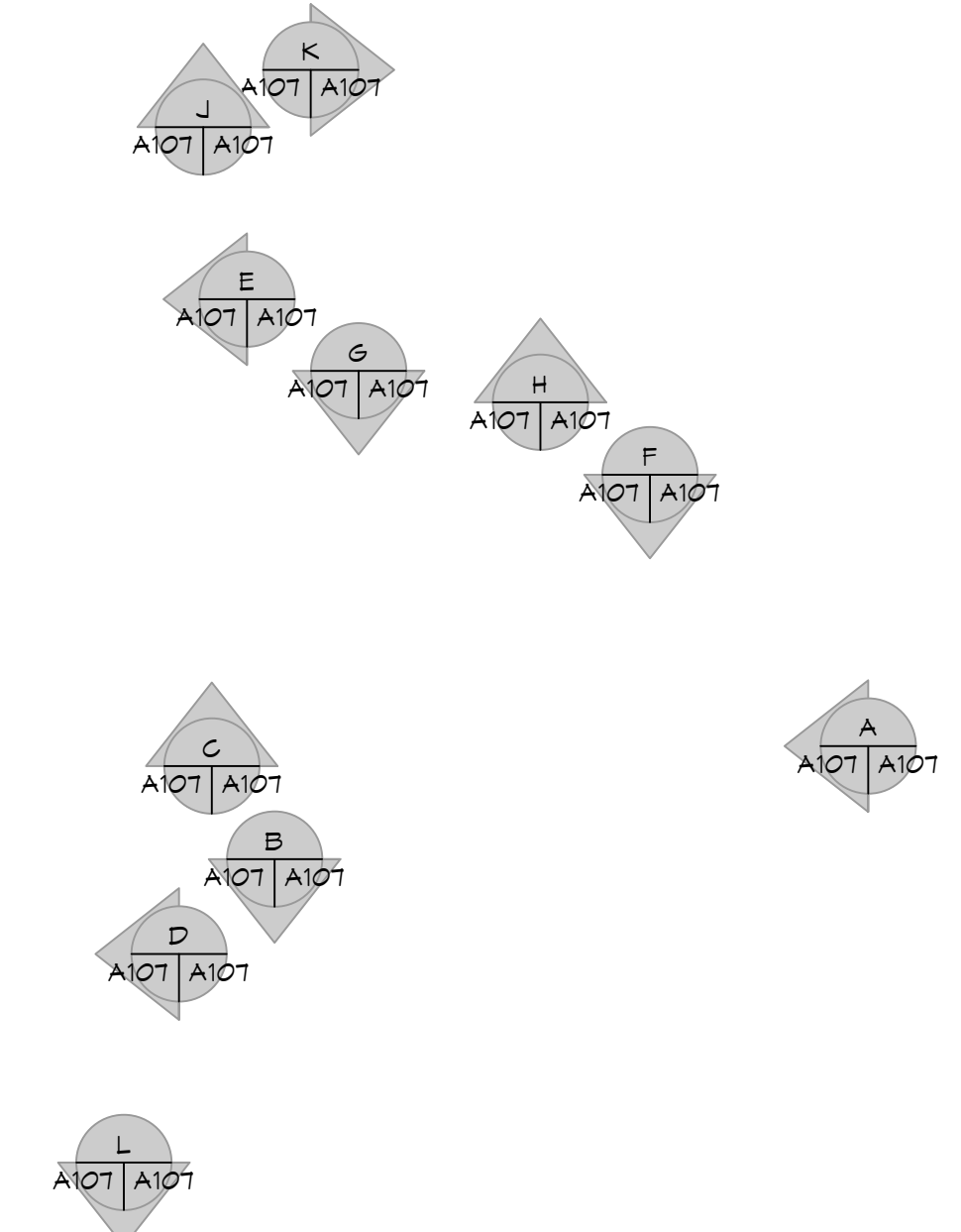
**J INTERIOR SECTION**  
 A107 | A107 SCALE: 3/8" = 1'-0"



**K INTERIOR SECTION**  
 A107 | A107 SCALE: 3/8" = 1'-0"



**L INTERIOR SECTION**  
 A107 | A107 SCALE: 3/8" = 1'-0"



**KEY PLAN**  
 SCALE: 1/8" = 1'-0"

**DAMMON ENGINEERING, INC.**  
 LOUISIANA & MISSISSIPPI  
 Chief Engineer: Brian Watch, PE  
 554 Old Spanish Trail  
 Slidell, LA 70468  
 www.dammonengineering.com  
 info@dammonengineering.com  
 PH: 985.649.9532

REVISIONS	DATE	DESCRIPTION



NEW ATHLETIC CLUB  
**P J S C O F F E E**  
 SHEET TITLE:  
 PJS INTERIOR ELEVATIONS  
 DRAWING NUMBER:  
**A103**  
 SHEET No: 4 of 11  
 DATE: 04/21/2023  
 DRAWN BY: TNT  
 CHECKED BY: TNT







EXHAUST FAN SCHEDULE									
TAG	FAN			POWER			MAKE / MODEL	REMARKS	
	AIRFLOW (CFM)	TSP ("wc)	AMPS	VAC	PH	HZ			
EF-1	70	0.2	0.4	Ceiling Exhaust	120	1	60	Broan A80	1, 2

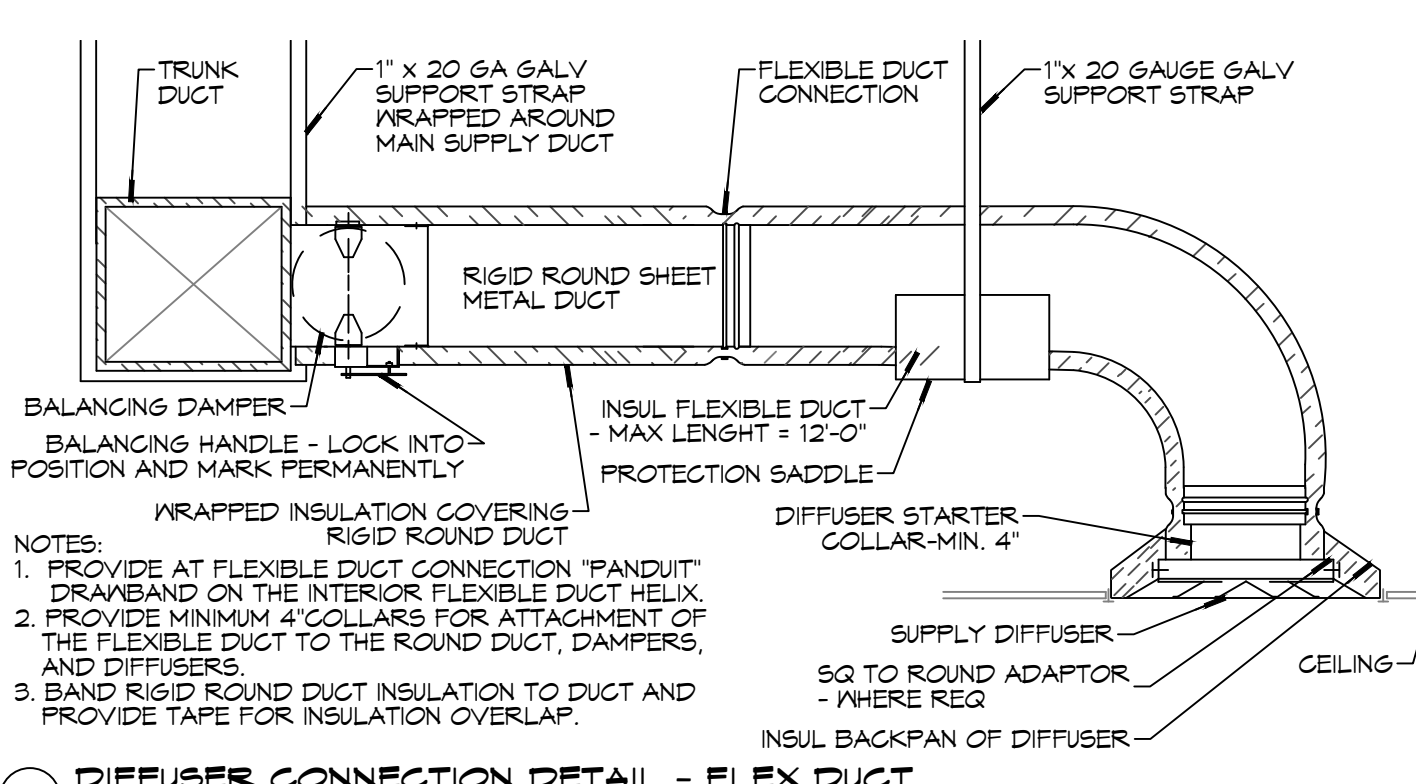
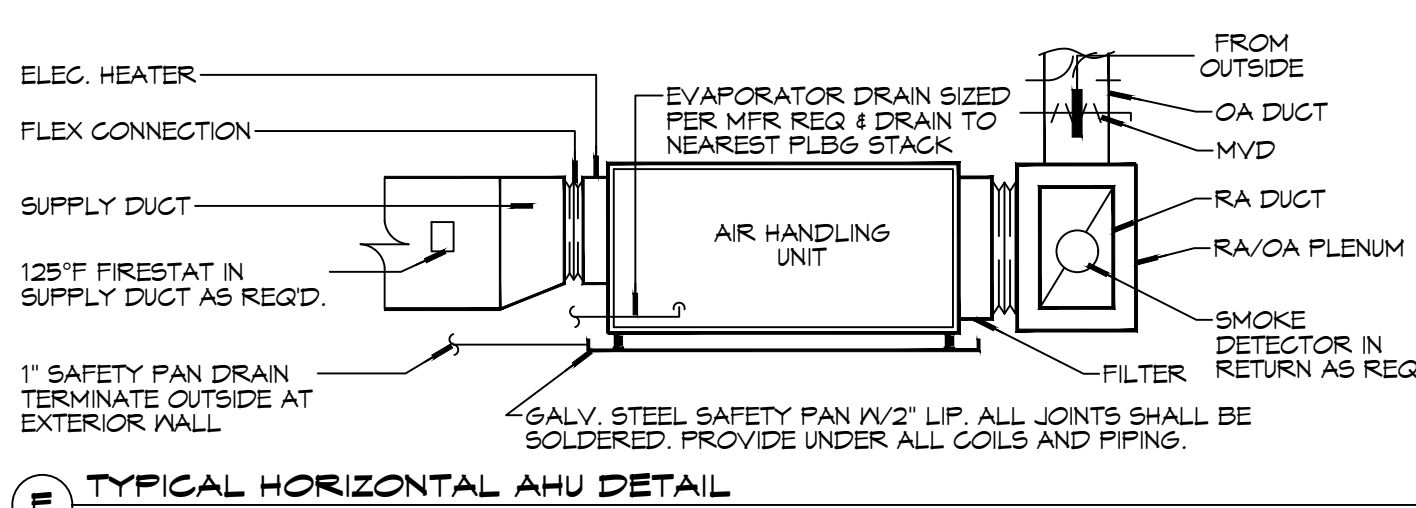
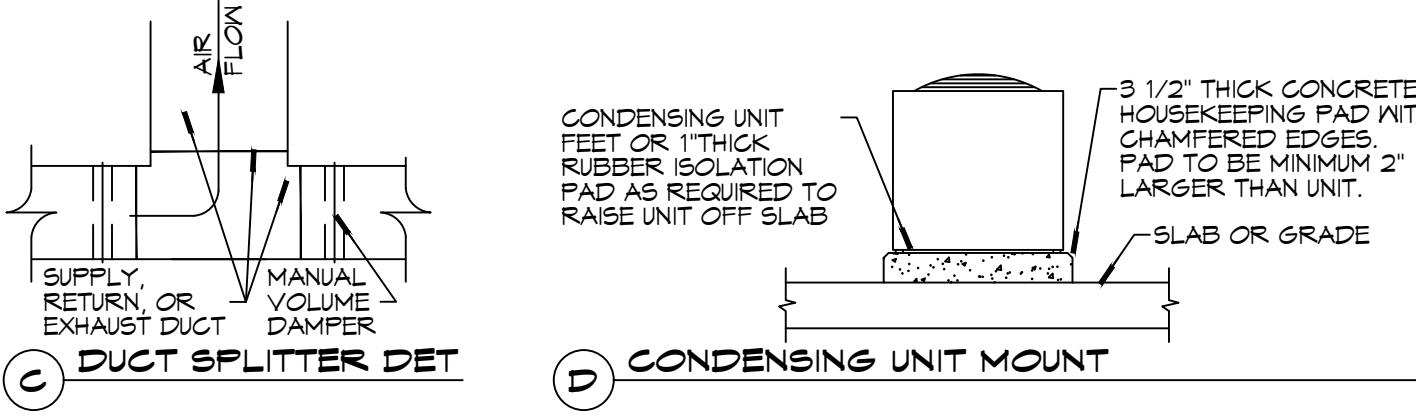
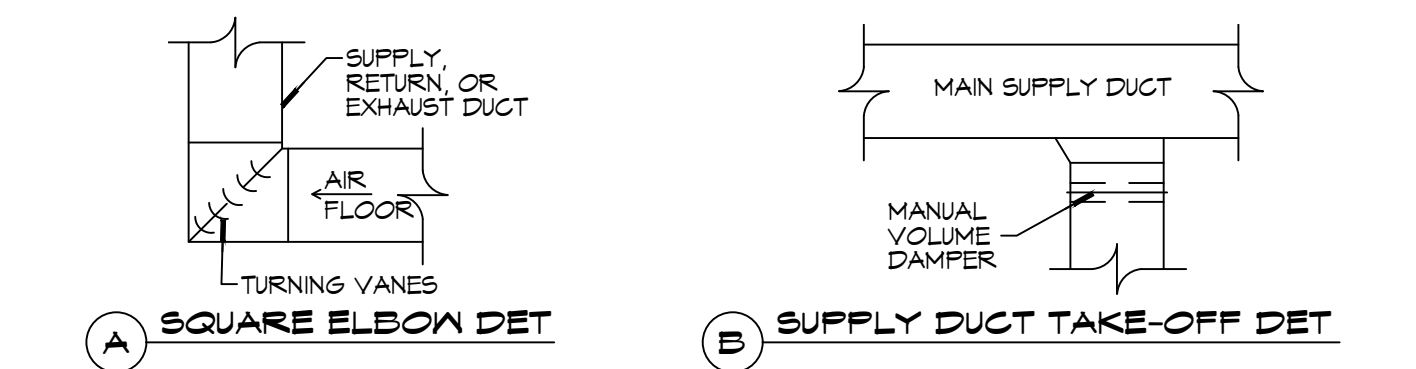
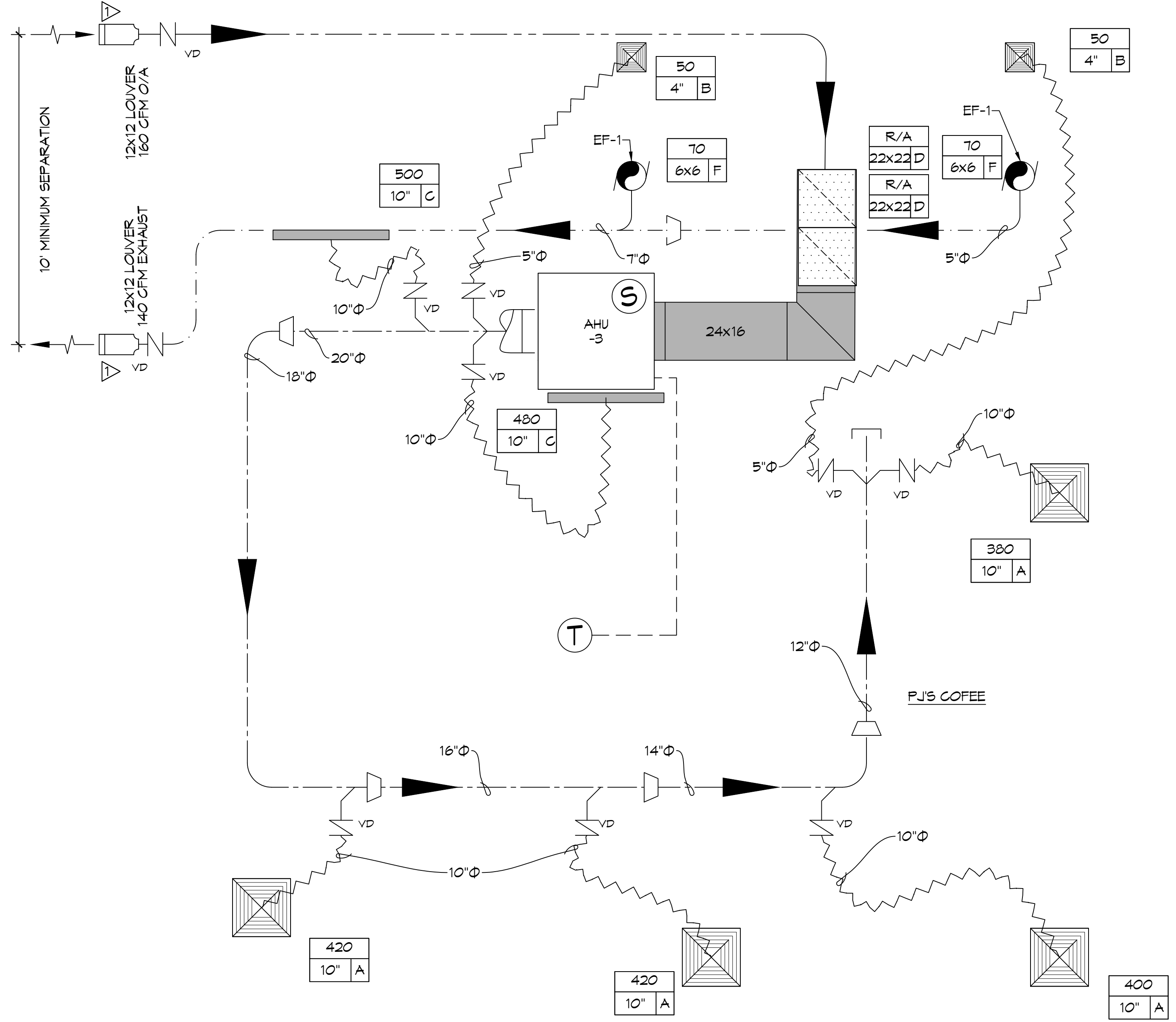
1. Install per manufacturer's recommendations
2. Interlock with light switch

DIFFUSER SCHEDULE				
TAG	SERVICE	NECK SIZE	DESCRIPTION	
A	SUPPLY AIR	REF. PLAN	24"x 24"	FIXED PATTERN PLAQUE, TITUS "OMNI" WITH DAMPER
B	SUPPLY AIR	REF. PLAN	12"x 12"	FIXED PATTERN PLAQUE, TITUS "OMNI" WITH DAMPER
C	SUPPLY AIR	REF. PLAN	24" x 2	SLOT LINEAR DIFFUSER, TITUS FL-10 WITH PLENUM & DAMPER
D				NOT USED
E				NOT USED
F	EXHAUST	REF. PLAN	12" X 12"	EGGCRATE, TITUS SERIES 50 WITH DAMPER

1. COORDINATE WITH OWNER FOR COLORS AND FINISH

SPLIT SYSTEM HEAT PUMP SCHEDULE																							
AIR HANDLER												HEAT PUMP											
TAG	AREA SERVED	TRANE AIR HANDLER MODEL NO.	NOMINAL TONS	TOTAL CFM	OA CFM	COOLING				Motor HP	ESP (" WC)	AUX. HEAT KW	POWER			MCA	TAG	TRANE HEAT PUMP MODEL NO.	POWER			RLA	REMARKS
						TMBH	SMBH	EDB	EWB				VAC	PH	Hz				VAC	PH	Hz		
AHU-3	P.J.'s Coffee	TWE090A3	7.5	2700	160	72.7	62.9	79.6	65.6	1.5	0.4	7.5	208	3	60	37	CU-3	TWA090A3	Single Point Connection			1, 2, 3, 4	

- NOTES:
1. Cooling capacities to be rated in accordance with AHRI standard 210/290 for ASHRAE standard design weather conditions in New Orleans, LA.
  2. Provide inlet filter box, time delay relay, condensate overflow switch & programmable 7/24 thermostat with lockable cover.
  3. Install units in accordance with manufacturer's recommendations.
  4. Provide new filters after commissioning and final acceptance.



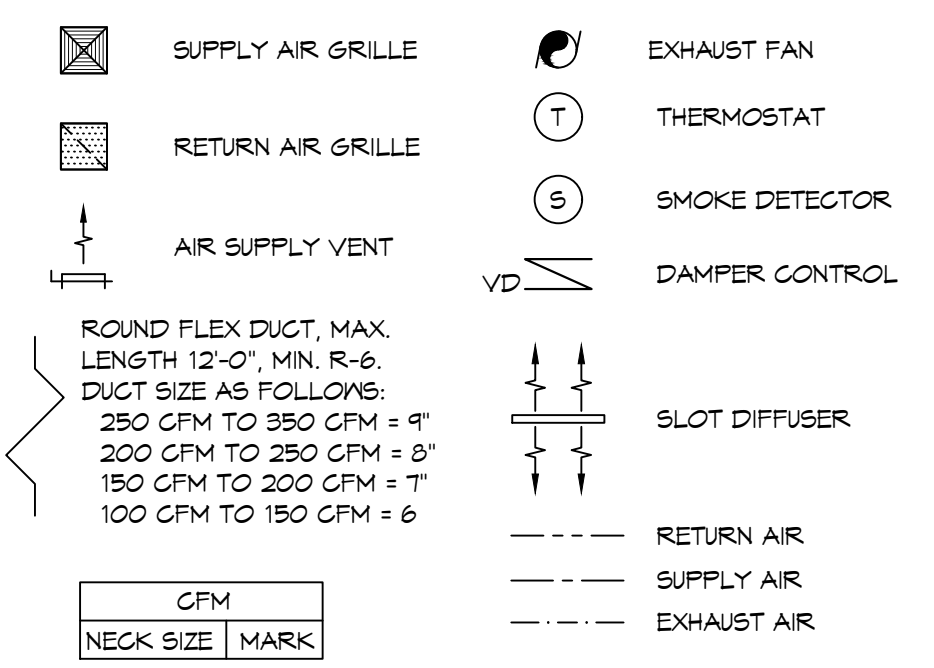
**TYPICAL DETAILS**  
SCALE: N.T.S.

**MECHANICAL PLAN**  
SCALE: 3/8" = 1'-0"

**HVAC NOTES**

1. CONCEALED DUCTWORK TO BE GALVANIZED SHEET METAL WRAPPED WITH FIBROUS GLASS DUCT WRAP WITH FSK VAPOR BARRIER, MIN R-6. INSTALLED PER SMACNA STANDARDS. DUCT WORK IMMEDIATELY DOWNSTREAM FROM RTU SHALL BE LINED FOR SOUND ATTENUATION.
2. EXPOSED DUCTWORK TO BE GALVANIZED SHEET METAL LINED WITH FIBROUS GLASS DUCT LINER, MIN R-6. INSTALLED PER SMACNA STANDARDS.
3. ROUND FLEXIBLE DUCT TO BE UL-181, CLASS 1, AIR DUCT MATERIALS.
4. DUCT SIZES SHOWN ARE CLEAR INSIDE DIMENSIONS.
5. IN ALL SYSTEMS OVER 2000 CFM AND LESS THAN 15,000 CFM, SMOKE DETECTORS SHALL BE INSTALLED IN ACCORDANCE WITH NFPA 72E IN THE RETURN DUCT DOWNSTREAM OF THE AIR HANDLING UNIT AND ALL FILTERS TO AUTOMATICALLY STOP THE FAN.
6. PROVIDE UL LISTED 125°F FIRESTAT IN RETURN AIR OF EACH SYSTEM UNDER 2000 CFM TO SHUT DOWN THE FAN IN THE EVENT OF FIRE.
7. PROVIDE UL RATED FIRE DAMPERS WHERE REQUIRED AT ALL DUCT PENETRATIONS OF FIRE-RATED ASSEMBLIES AND WHERE REQUIRED BY CODE, INCLUDING OUTSIDE AIR INTAKES AND EXHAUST FANS.
8. CONDENSATE DRAINS TO BE PVC PIPE RUN TO PLUMBERS P-TRAP WITHIN FIVE FEET OF AIR HANDLING UNITS.
9. ALL AIR HANDLING SYSTEMS TO BE BALANCED TO ASSURE PROPER AIR FLOWS PER PLANS.
10. ALL THERMOSTATS TO BE AUTOMATIC CHANGEOVER WITH HEAT SWITCH.
11. EXHAUST FAN SHALL BE CONTROLLED BY A SWITCH ON THE WALL IN THE SAME LOCATION AS LIGHT SWITCH(S). PROVIDE BACK DRAFT DAMPER.
12. PROVIDE AND INSTALL WATER PROOF GRILLE VENT IN PROPER ROOF LOCATION FOR PLUMBING FIXTURE EXHAUST.
13. ALL SUPPLY AIR VENTS SHALL BE EQUIPPED WITH AIR CONTROL DAMPERS AT THE REGISTER.
14. LOCATE OUTDOOR UNITS AS SHOWN ON ARCHITECTURAL DRAWINGS.
15. REFRIGERANT LINES SHALL BE SIZED BY UNIT MANUFACTURER AND INSTALLED ACCORDING TO MANUFACTURER'S INSTRUCTIONS.
16. FRESH AIR SHALL BE SUPPLIED TO EACH AIR HANDLER THROUGH EXTERIOR WALL DUCT SUPPLIED WITH A CONTROL DAMPER.
17. ALL ELECTRICAL, MECHANICAL, AND PLUMBING PENETRATING FIRE WALLS SHALL BE FIRE CAULKED. PENETRATIONS THROUGH RATED CONSTRUCTION SHALL BE SEALED WITH A MATERIAL CAPABLE OF PREVENTING THE PASSAGE OF FLAMES AND HOT GASES WHEN TESTED IN ACCORDANCE WITH ASTM-E8-14).
18. ALL MECHANICAL SYMBOLS ARE DRAWN DIAGRAMMATICALLY. CONTRACTOR TO VERIFY WITH OWNER LOCATIONS OF VENTS, DAMPERS, REGISTERS, ETC.
19. FLEXIBLE DUCTWORK LENGTH NOT TO EXCEED 12'-0". SUPPORT FLEX DUCT TO PREVENT SAGGING.
20. REFER TO REFLECTED CEILING PLAN FOR FINAL GRILLE AND DIFFUSER LOCATIONS AND COORDINATE AS REQUIRED.
21. FINAL LOCATION OF TEMPERATURE CONTROLS TO BE COORDINATED WITH OWNER AT JOB SITE.
22. PROVIDE AND INSTALL SMOKE DETECTORS AS APPROVED BY LOCAL AHJ'S. PLACE NEAR R/A AND S/A OPENINGS OF AHU AND PROVIDE, WITH ACCESS PANEL, WIRING BY ELECTRICAL CONTRACTOR.
23. FRESH AIR INTAKES ARE REQUIRED TO HAVE MOTORIZED OR GRAVITY DAMPERS TO SHUT OFF WHEN SYSTEM IS NOT RUNNING.
24. PROVIDE BIRD SCREENS AT ALL EXTERIOR MECHANICAL PENETRATIONS.
25. COORDINATE WALL MOUNTED THERMOSTAT LOCATIONS WITH ALL OWNER FURNISHED ITEMS EITHER WALL MOUNTED OR FLOOR MOUNTED AGAINST PARTITIONS. REFER TO ARCHITECTURAL DRAWINGS.
26. SEE ROOF PLAN FOR ALL ROOF PENETRATIONS.
27. PROVIDE MIN 18 GA GALVANIZED SHEET METAL TO BLANK-OFF GABLE VENTS WHERE INTAKE/EXHAUST DUCTS OCCUR.

**HVAC LEGEND**



**NOTES**

1. RUSKIN HZ100 OR EQUAL EXTREME PERFORMANCE 6063T6 ALUMINUM LOUVER WITH SCREEN (AMCA 540 / 550)

**DAMMON ENGINEERING, INC.**  
LOUISIANA & MISSISSIPPI  
Chief Engineer: Brian A. Mitech, PE  
554 Old Spanish Trail  
Slidell, LA 70458  
www.dammonengineering.com  
info@dammonengineering.com  
PH: 985-649-5832

#	DESCRIPTION	DATE

SEAL:

**NEW ATHLETIC CLUB**  
**P.J.'S COFFEE**

DATE: 04/27/2022  
JOB No: 4422 KALANI DRIVE HANGCOCK COUNTY, MISSISSIPPI  
DRAWN BY: CKD  
CHECKED BY: BAK

SHEET TITLE: MECHANICAL PLAN  
DRAWING NUMBER:  
**M101**  
SHEET No: 6 of 11





