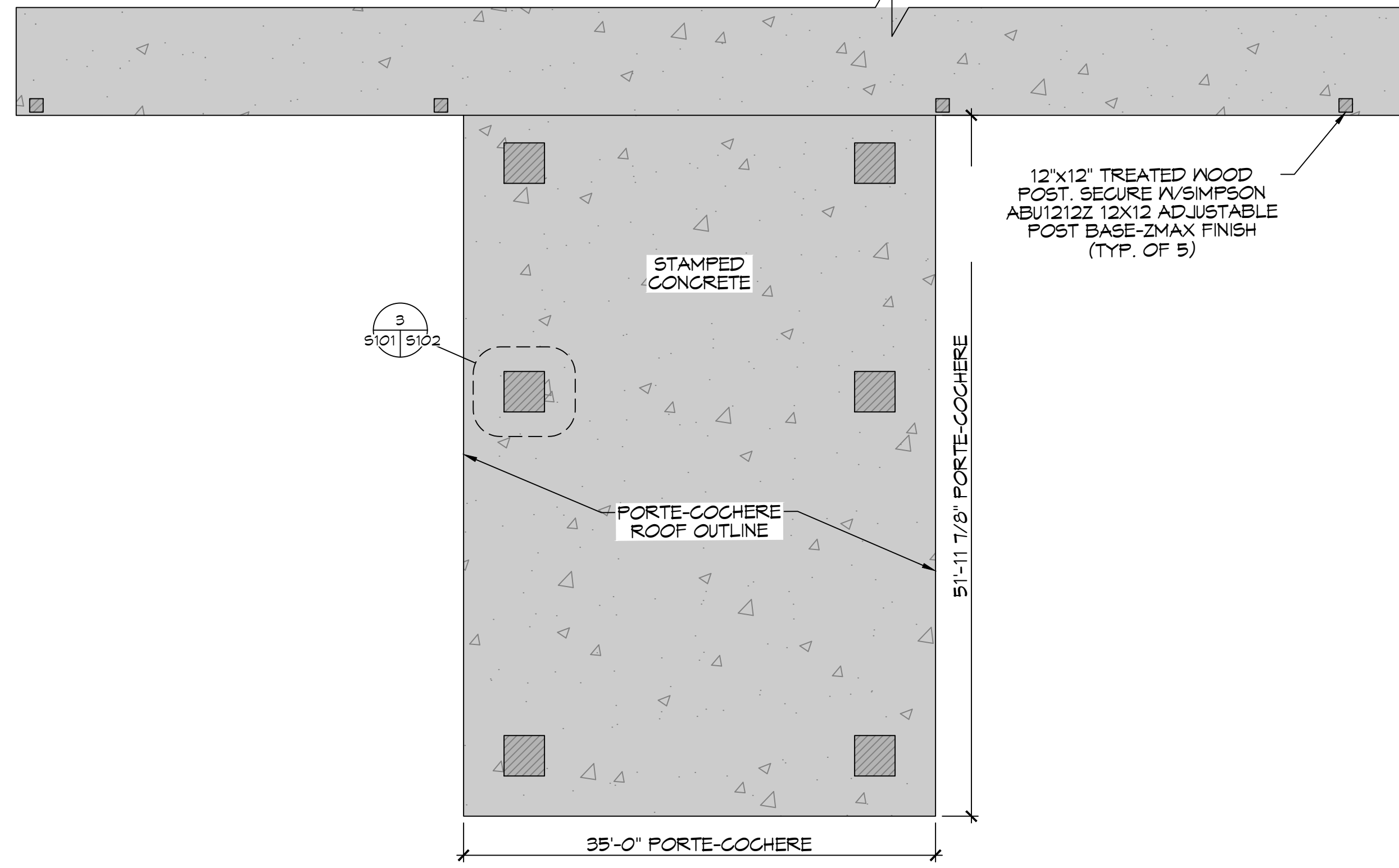


PLS. NOTE: ALL DIMENSIONS UNLESS OTHERWISE SPECIFIED ARE IN FEET AND INCHES. DIMENSIONS TO FACE UNLESS OTHERWISE SPECIFIED.



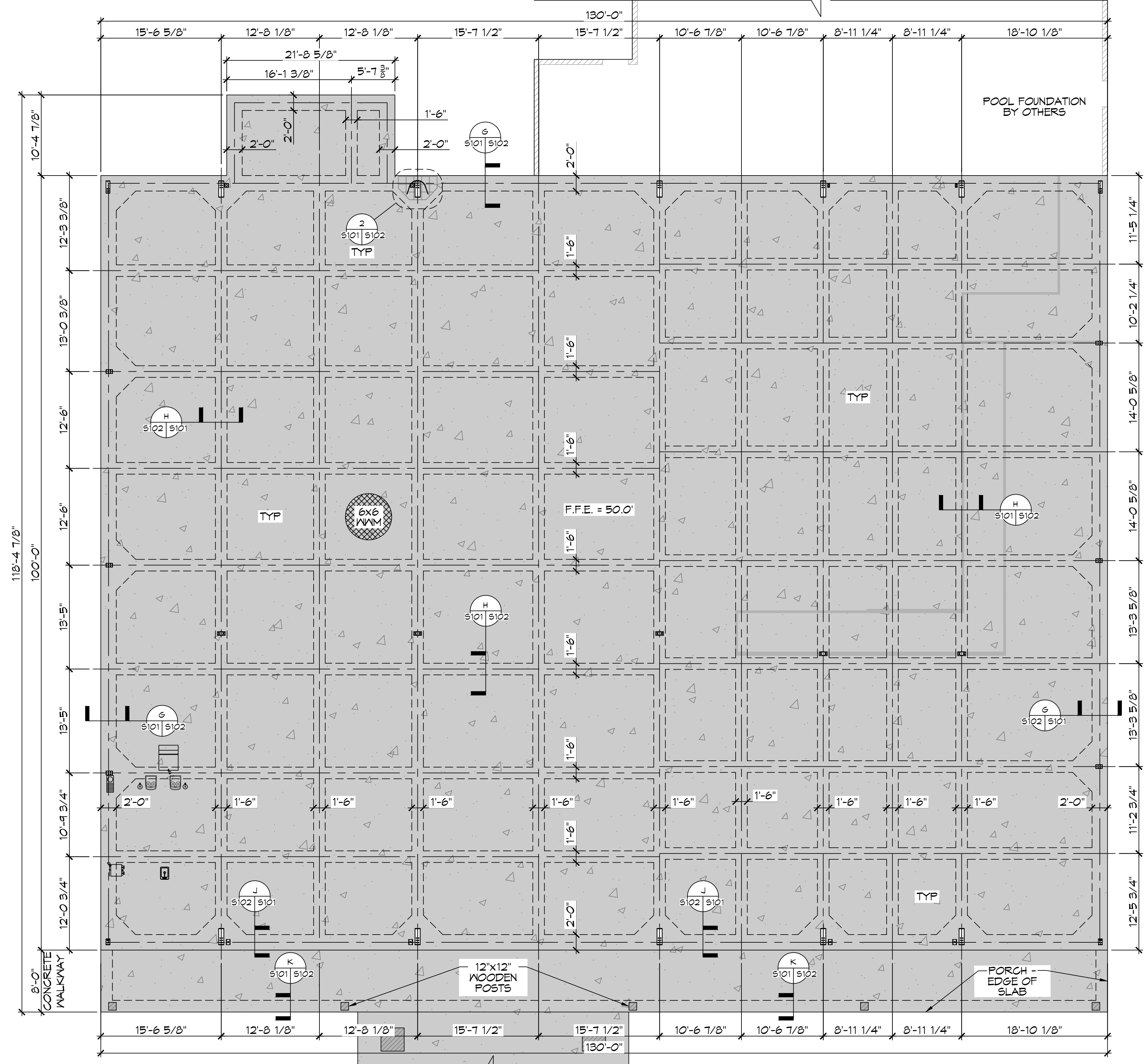
22 PORTE COCHERE FOUNDATION PLAN
SCALE: 1/8"=1'-0"

SITE NOTE

1. THE SITE AND FOUNDATION WAS DESIGNED BASED ON A GEOTECHNICAL REPORT GENERATED BY STRATUM ENGINEERING, LLC, OCTOBER 23, 2017. ALL SITE PREPARATION AND FOUNDATION CONSTRUCTION SHALL FOLLOW THE RECOMMENDATIONS IN THE GEOTECHNICAL REPORT.

REFERENCE NOTE

1. PRIOR TO CONSTRUCTION VERIFY WITH THE METAL BUILDING MANUFACTURER FOR COLUMN LOCATION.



23 FOUNDATION PLAN
SCALE: 1/8"=1'-0"

DAMMON ENGINEERING, INC.
LOUISIANA & MISSISSIPPI

Field Engineer: Brian Mistich, PE
5640 Old Country Road
Slidell, LA 70488
www.dammonengineering.com
info@dammon.com
PH: 985.649.5833

#	DESCRIPTION	REVISIONS	DATE



**NEW ATHLETIC CLUB
PRESTIGE FITNESS
CLUB AND SPA**

4422 KALANI DRIVE
HANGCOCK COUNTY, MISSISSIPPI

JOB No: 06-24-2022
DATE: 06-24-2022
DRAWN BY: BAY
CHECKED BY: C&D

SHEET TITLE:
FOUNDATION PLAN

DRAWING NUMBER:

S101

SHEET No: 9 of 22