

THESE DRAWINGS WERE PREVIOUSLY SIGNED AND SEALED ON FEBRUARY 19, 2010 BY SHAWN J. FRANKE P.E. LOUISIANA REG. NO. 28077

**THE SAENGER THEATRE RENEWAL PROJECT**  
142 North Rampart Street  
New Orleans, LA

Client  
Saenger Theatre Redevelopment Company  
200 West Loop South, Suite 1040  
Houston, TX 77027

Architect  
**MARTINEZ+JOHNSON** ARCHITECTURE  
1412 Eye St., NW  
Washington, DC 20005  
202.333.4480

Structural Engineer  
Shawn J. Franke, P.E.  
549 Helmer Road  
San Antonio, TX 78232  
210.979.7900

Theatre Consultant  
Schuler Shook  
123 Third Street North #210  
Minneapolis, MN 55401  
612.339.5958

Acoustical Engineer  
Akustiks  
93 North Main Street South  
Newark, CT 06584  
202.299.1904

MEP Engineer  
JBA Consulting Engineers, Inc.  
3525 N. Causeway Blvd., Suite 500  
Metairie, LA 70002  
202.393.1199

Civil Engineer  
Linfield, Hunter, & Junius, Inc.  
3608 18TH Street Suite 200  
Metairie, LA 70002  
504.833.5300

Architectural Historian  
EHT Traceries, Inc.  
1121 Fifth Street NW  
Washington, DC 20001  
202.393.1199

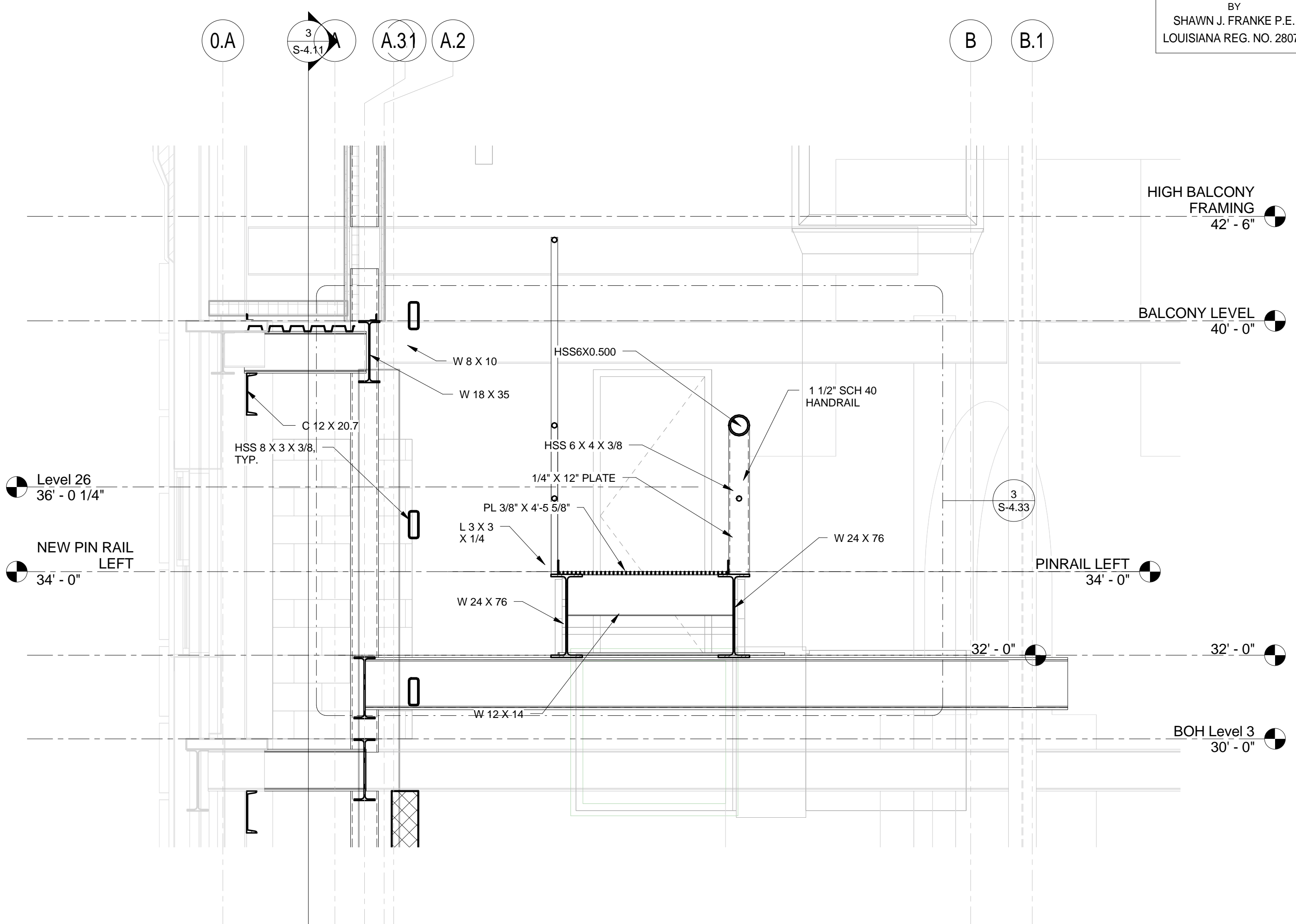
THESE DRAWINGS, SPECIFICATIONS, AND OTHER DOCUMENTS (COLLECTIVELY, THE "DOCUMENTS") INCLUDING WITHOUT LIMITATION ELECTRONIC VERSIONS THEREOF AND THE IDEAS, DESIGNS, AND ARRANGEMENTS REPRESENTED THEREBY ARE AND SHALL REMAIN THE PROPERTY OF MARTINEZ & JOHNSON ARCHITECTURE P.C. AS DEFINED BY APPLICABLE CONTRACTUAL AGREEMENTS (THE "AGREEMENTS") AND AS PROTECTED BY THE COPYRIGHT STATUTES OF THE UNITED STATES. USE OF THE DOCUMENTS SHALL BE STRICTLY LIMITED TO THE PROJECT FOR WHICH THEY WERE PREPARED AND DEVELOPED. NO PART OF THE DOCUMENTS SHALL BE COPIED, DISCLOSED TO OTHERS, OR USED IN CONNECTION WITH ANY OTHER WORK OR PROJECT, OR BY ANY OTHER PERSONS FOR ANY PURPOSES, OTHER THAN THE COMPLETION OF THE PROJECT WITHOUT THE SPECIFIC WRITTEN AUTHORIZATION OF MARTINEZ & JOHNSON ARCHITECTURE P.C. THE DOWNLOADING, SPREADING, OR VIEWING OF ELECTRONIC VERSIONS OF THE DOCUMENTS OR VISUAL CONTACT WITH ANY PRINTED FORM THEREOF SHALL CONSTITUTE CONCLUSIVE EVIDENCE OF ACCEPTANCE OF THESE RESTRICTIONS.

7502

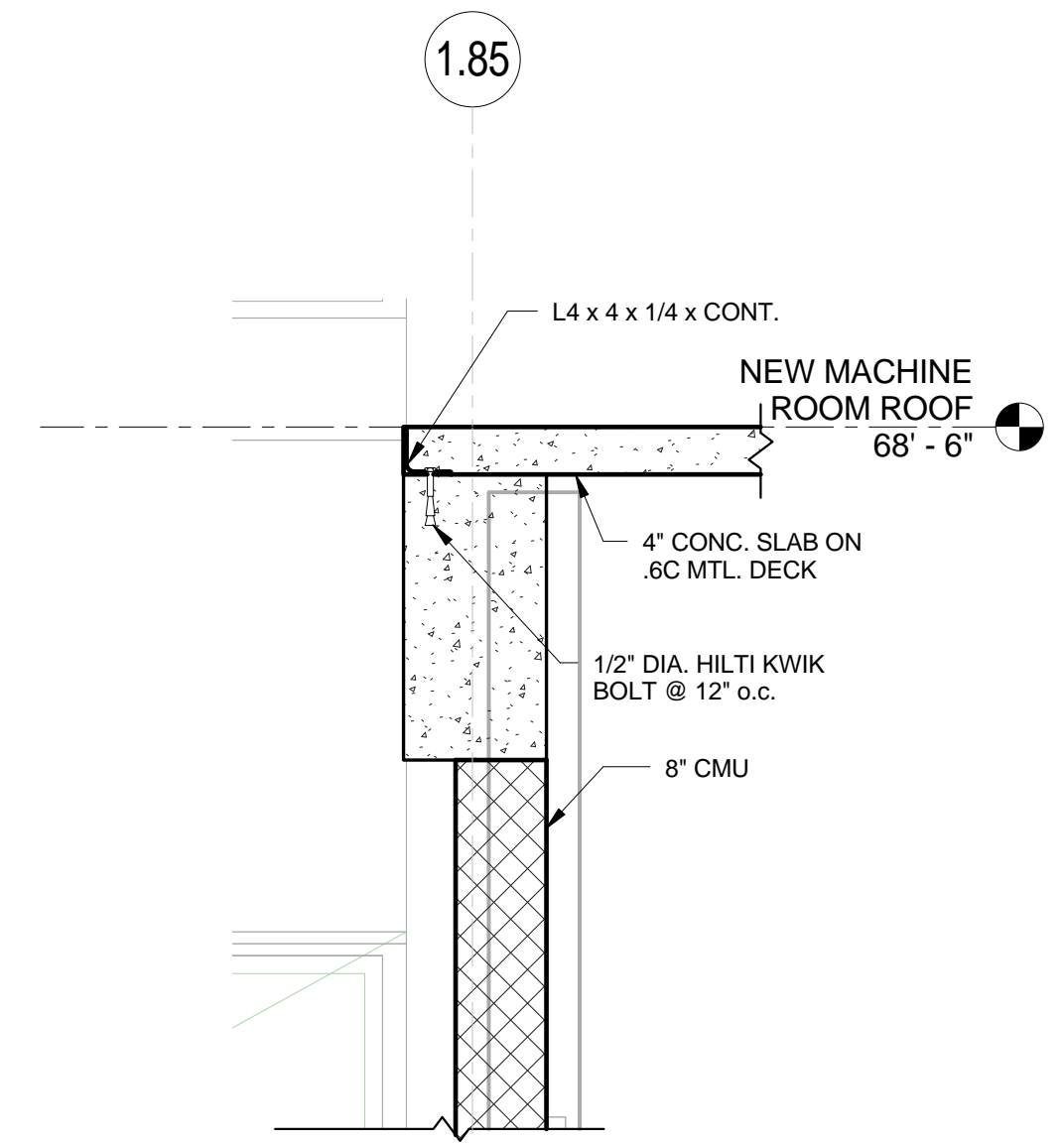
DATE:	No.:	REVISION:
02.19.10		PERMIT SET
04.02.10		GMP
11.11.10		CONTRACT SET

SHEET TITLE:  
**SECTIONS**

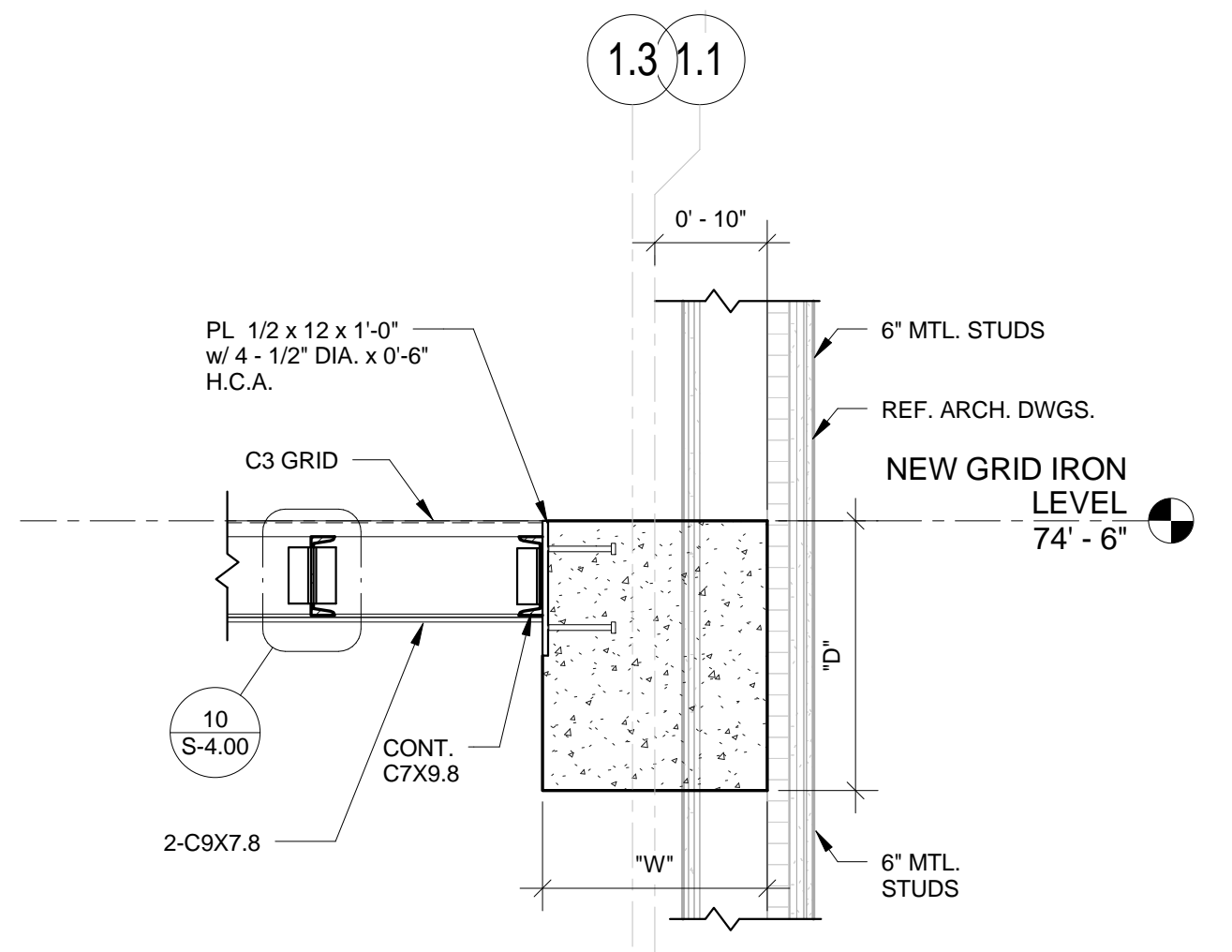
**S-4.26**



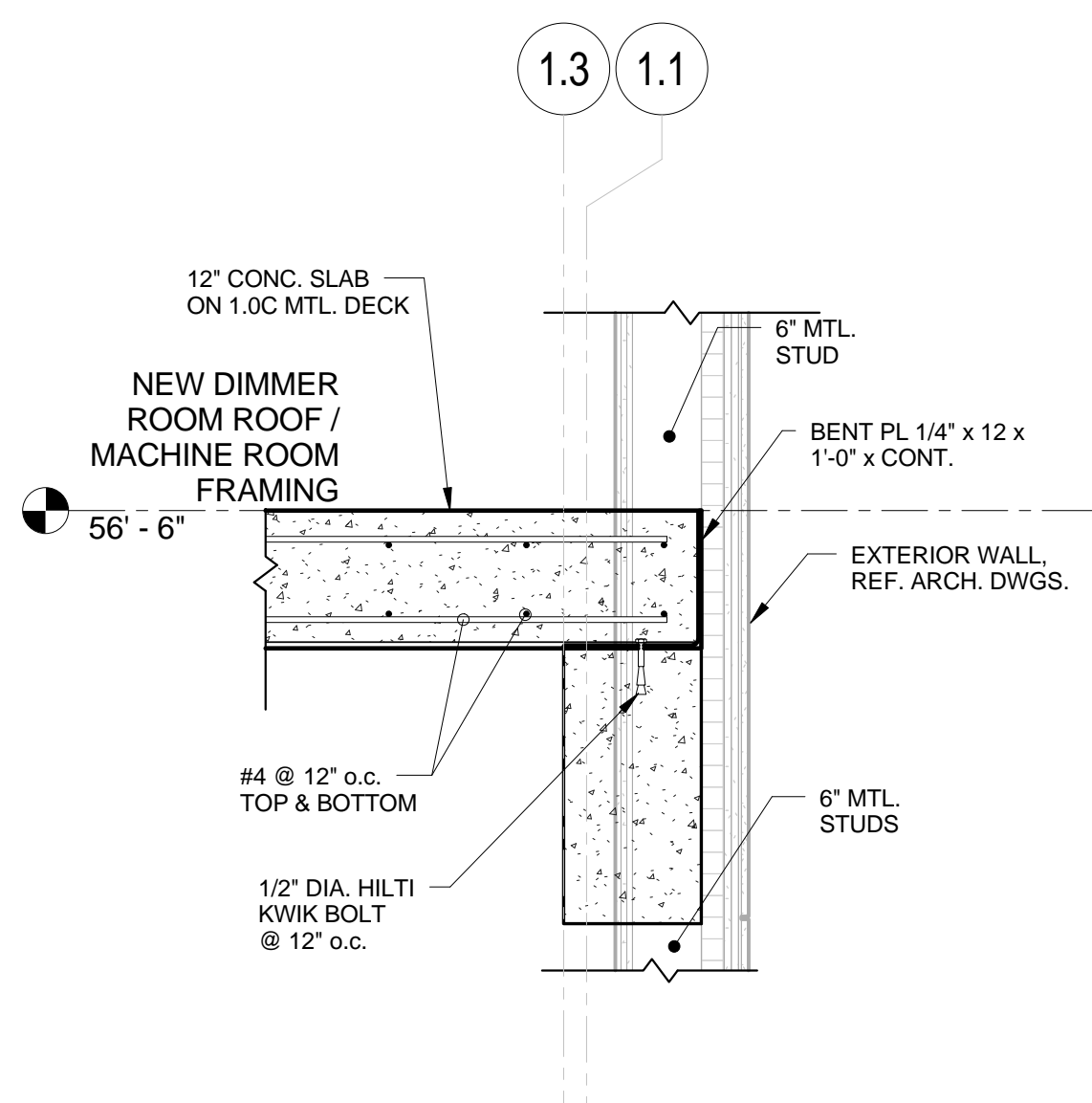
**1** DETAIL  
1/2" = 1'-0"



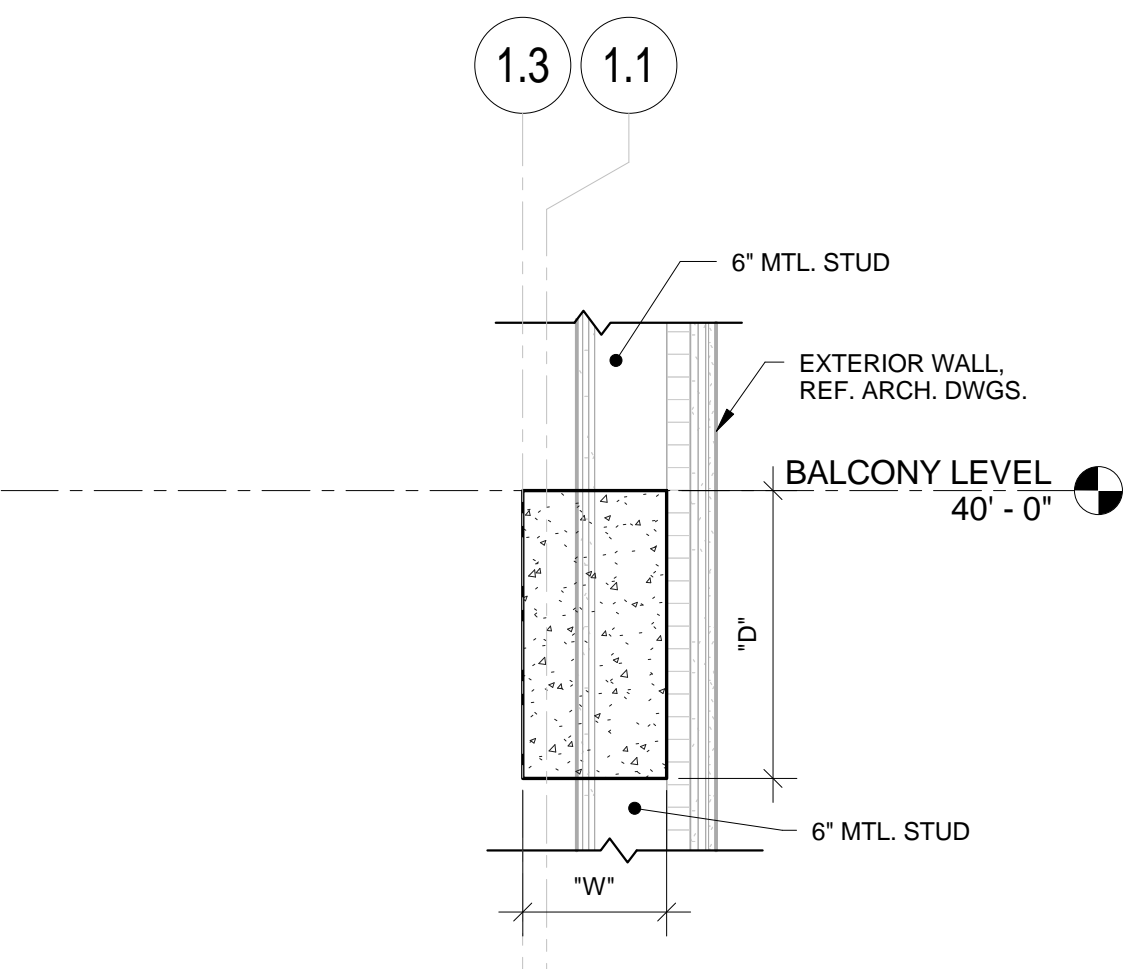
**5** DETAIL  
3/4" = 1'-0"



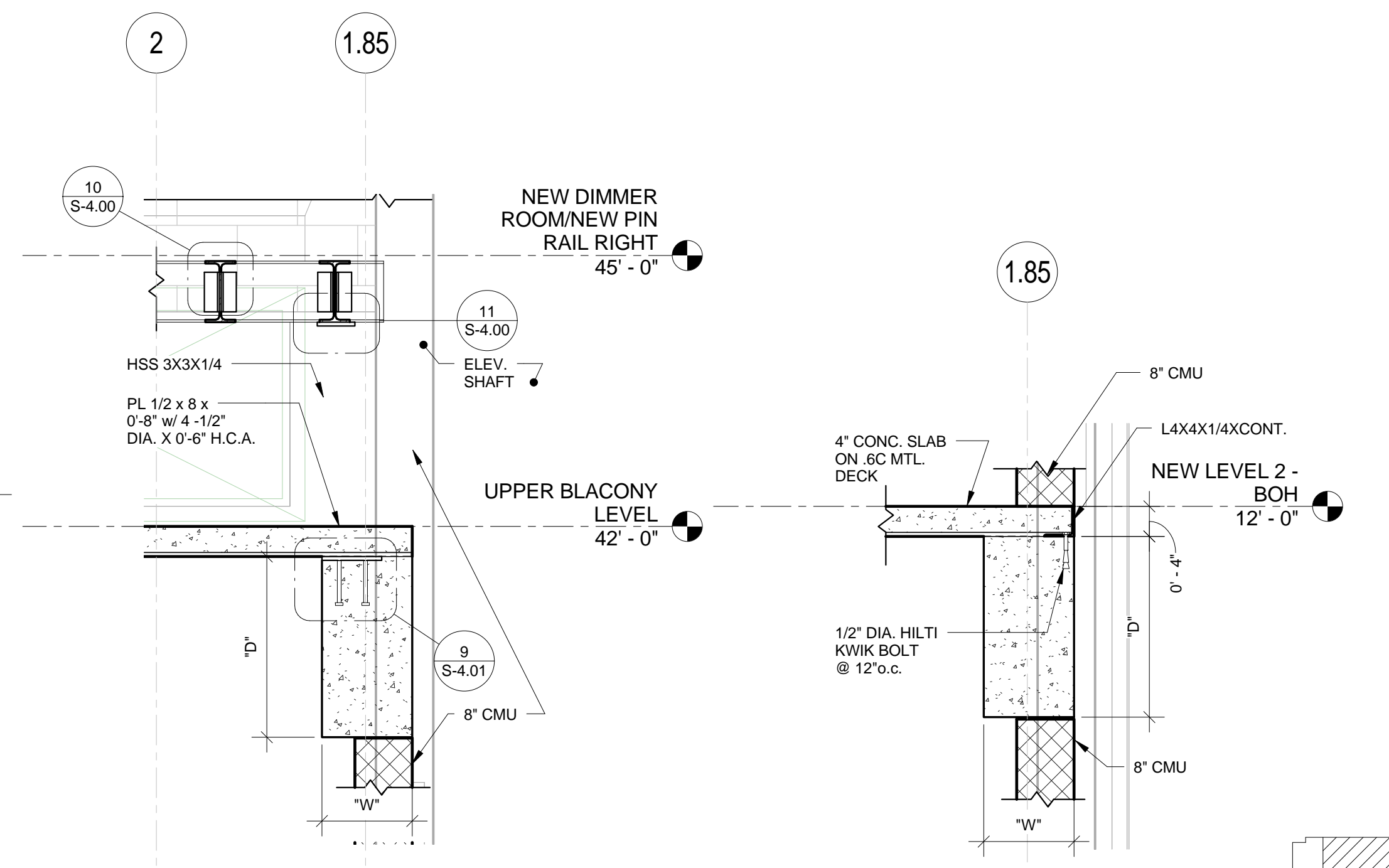
**6** DETAIL  
3/4" = 1'-0"



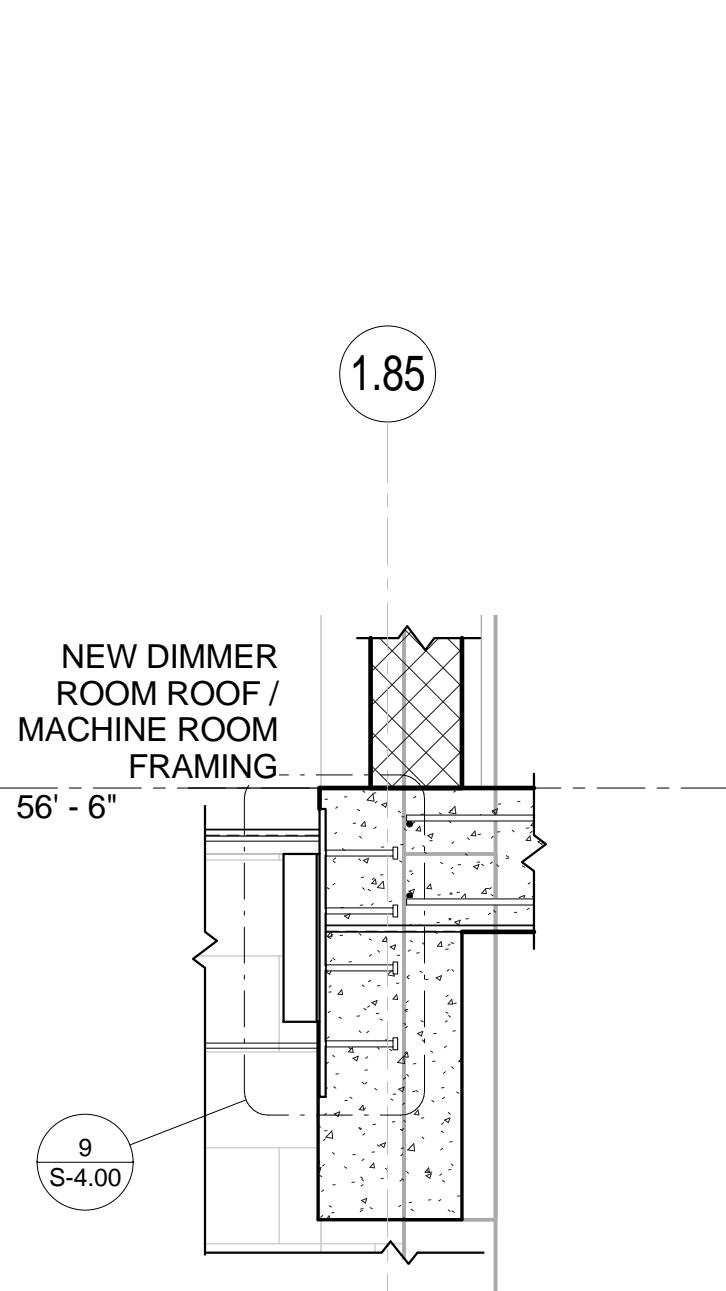
**8** DETAIL  
3/4" = 1'-0"



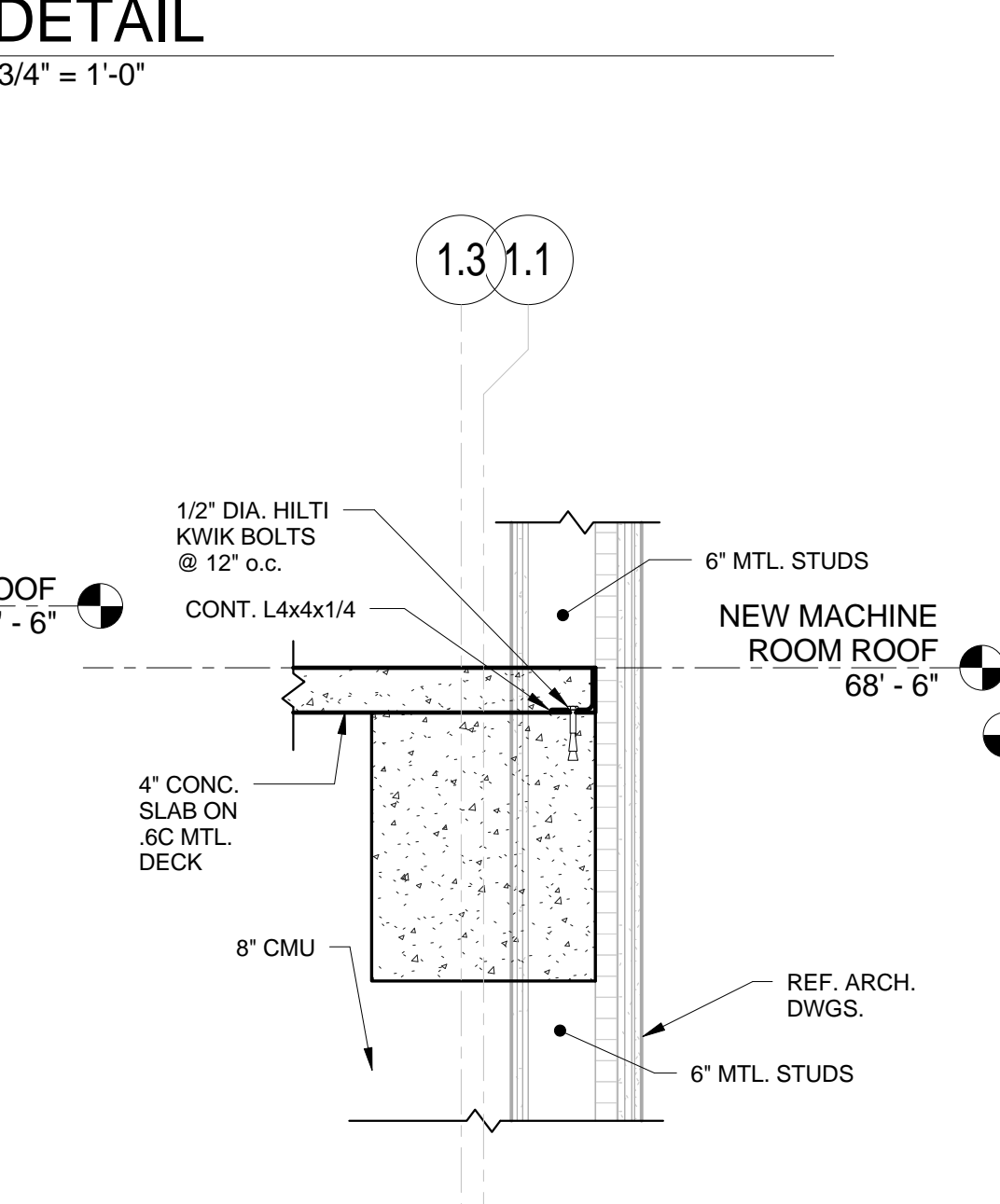
**9** DETAIL  
3/4" = 1'-0"



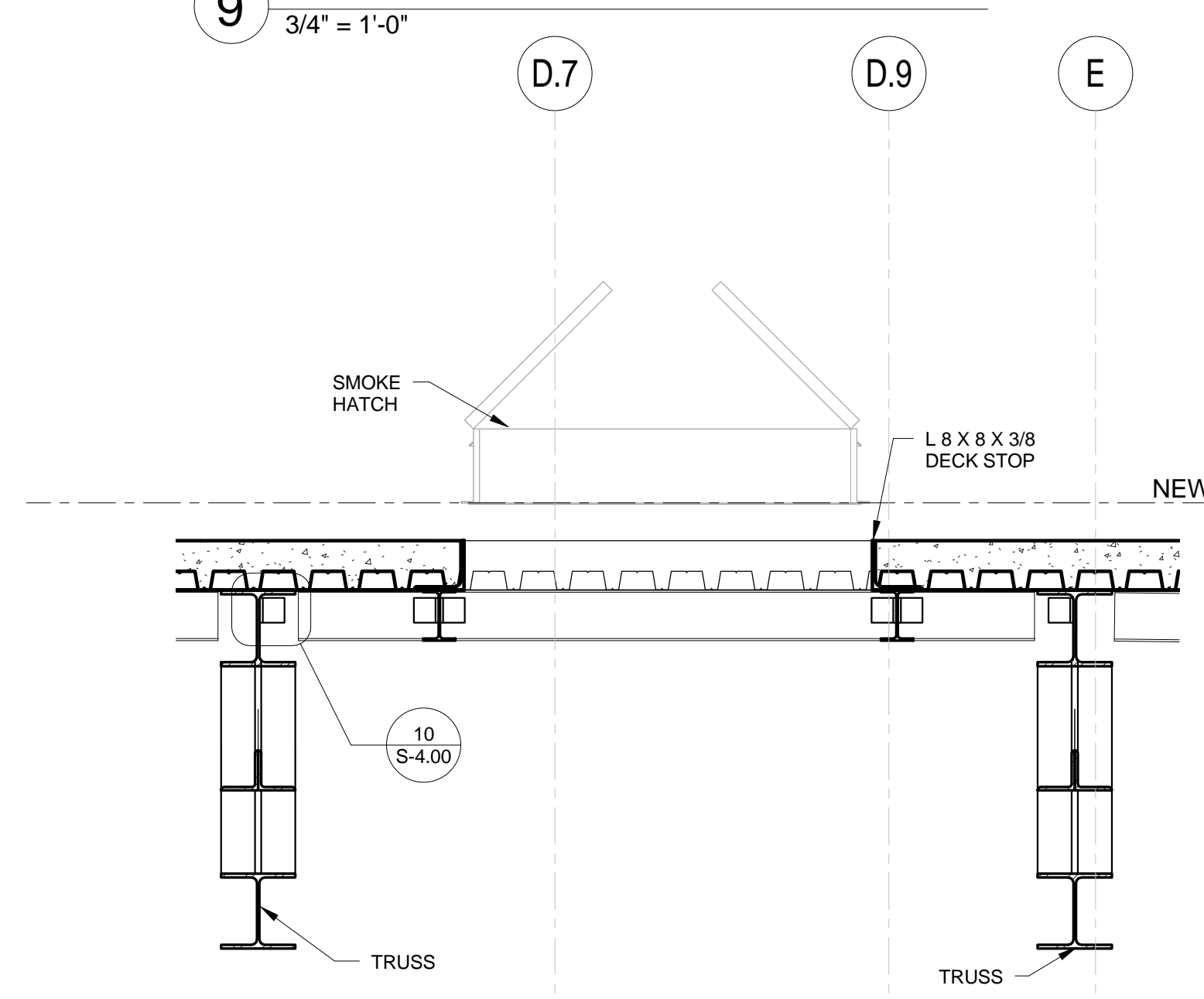
**2** DETAIL  
3/4" = 1'-0"



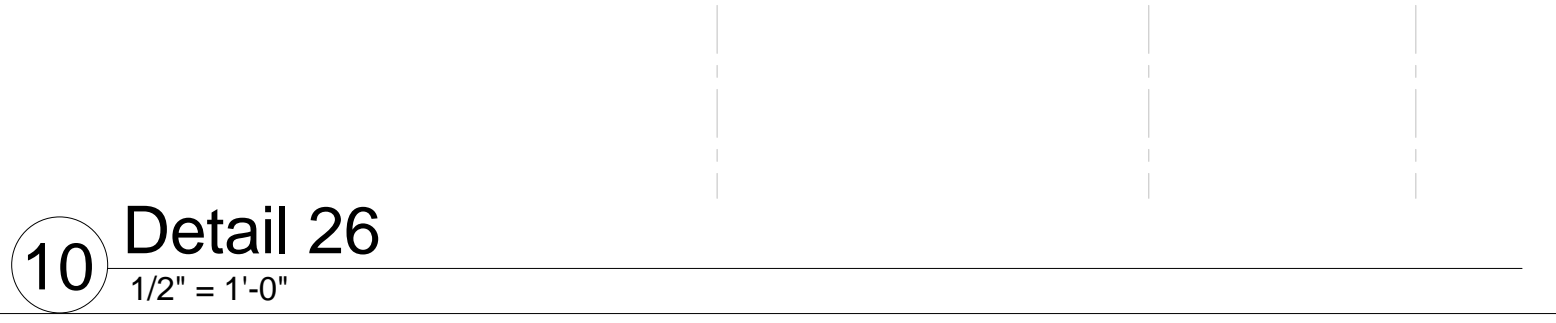
**3** DETAIL  
3/4" = 1'-0"



**4** DETAIL  
3/4" = 1'-0"



**7** DETAIL  
3/4" = 1'-0"



**10** Detail 26  
1/2" = 1'-0"

SECTIONS As indicated

ISSUED FOR PERMIT