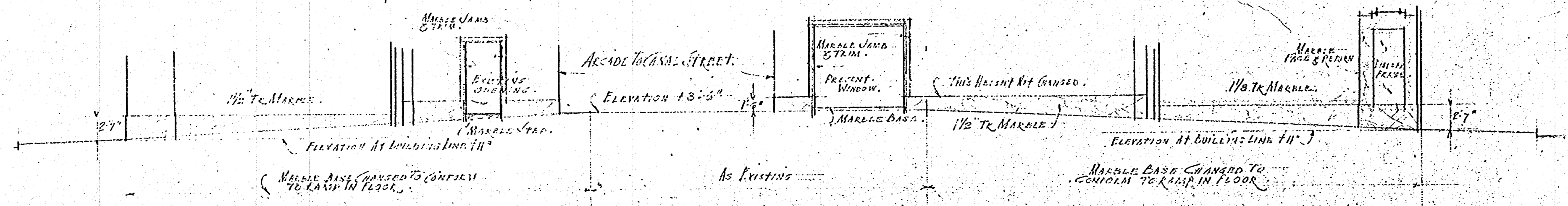
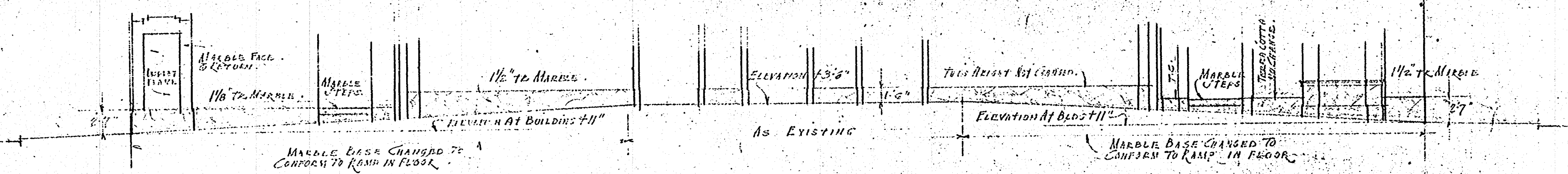


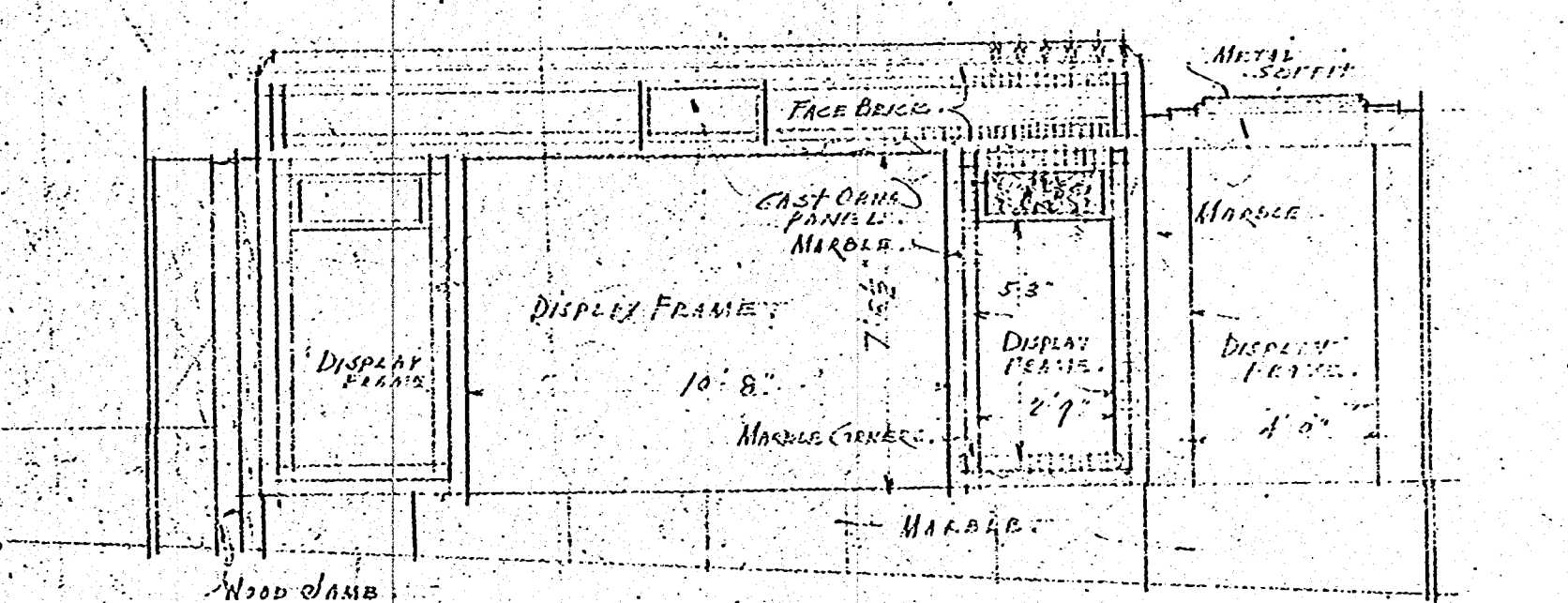
DETAIL OF SARATOGA ST. ENTRANCE  
SCALE 1/4" = 1'-0"



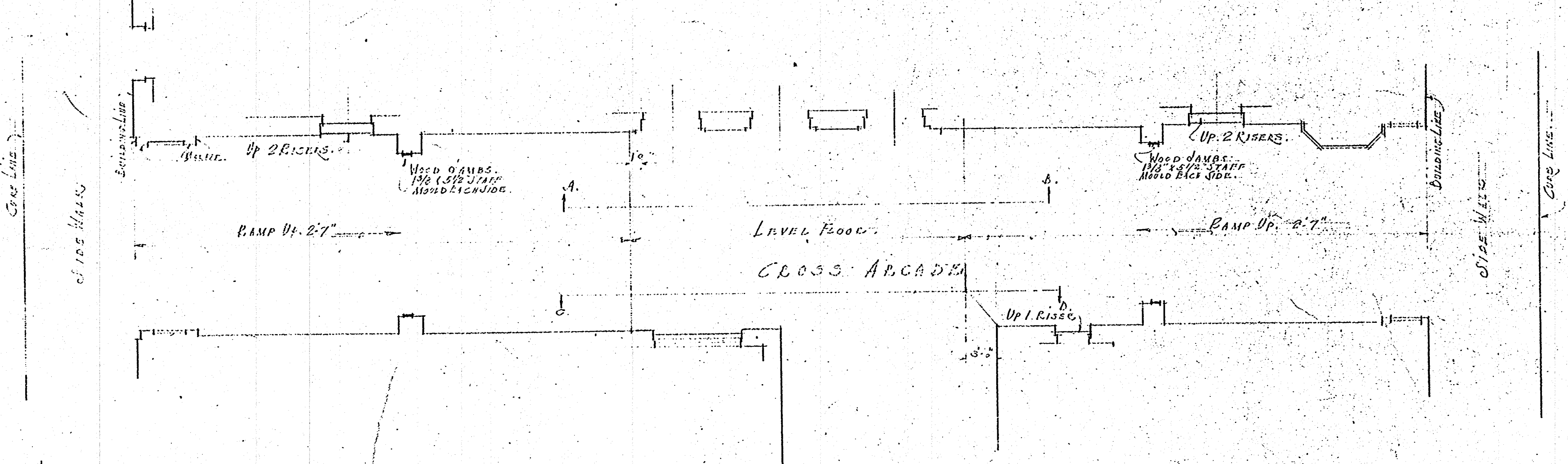
ELEVATION ON LINE C. D.  
SCALE 1/8" = 1'-0"



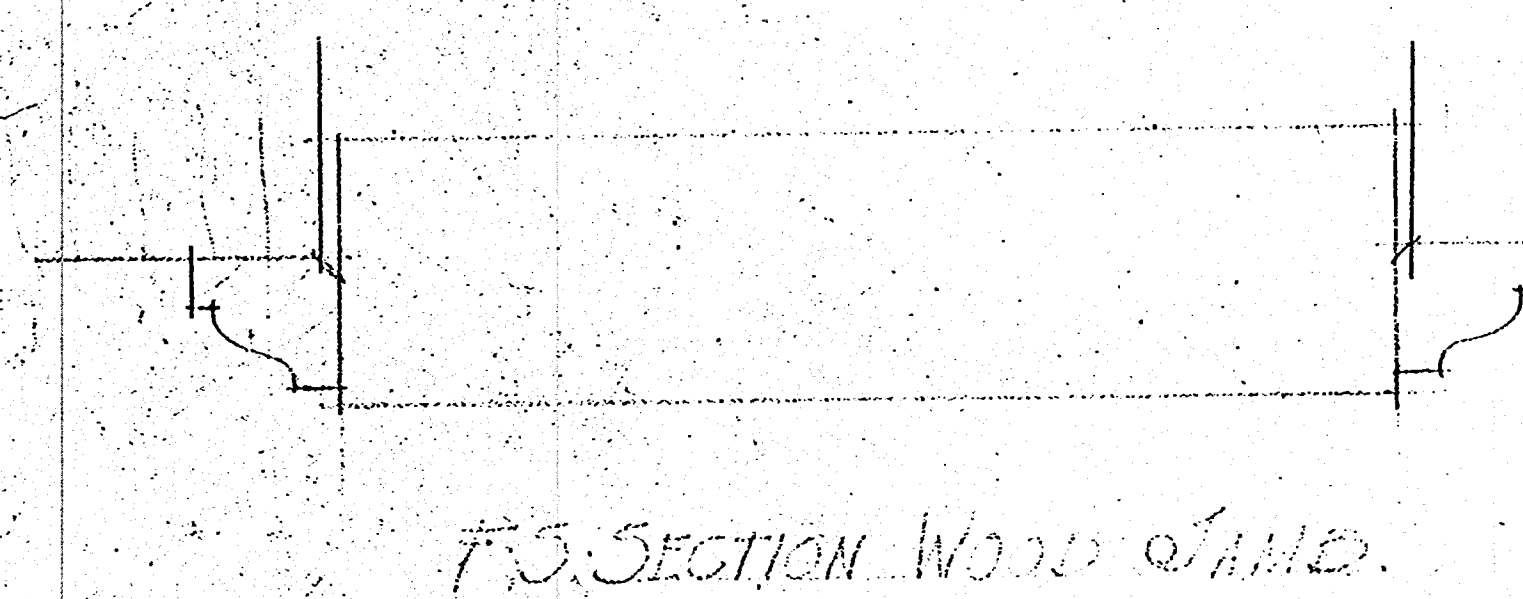
ELEVATION ON LINE A. D.  
SCALE 1/8" = 1'-0"



DETAIL OF SARATOGA ST. ENTRANCE  
SCALE 1/4" = 1'-0"



FLOOR PLAN OF CROSS ARCADE  
SCALE 1/8" = 1'-0"



T.S. SECTION WOOD JAMB

CANAL STREET TRAMP  
FOR  
SARATOGA ST. ENTRANCE  
CATH. B. PARISH, NEW ORLEANS, LA.

REVISED JUNE 9 1925	ERILE WEIL ARCHITECTS WHITNEY CENTRAL BUILDING NEW ORLEANS, LA.	PLAN SHEET 10	DATE JUN 9 1925
------------------------	---	---------------------	--------------------