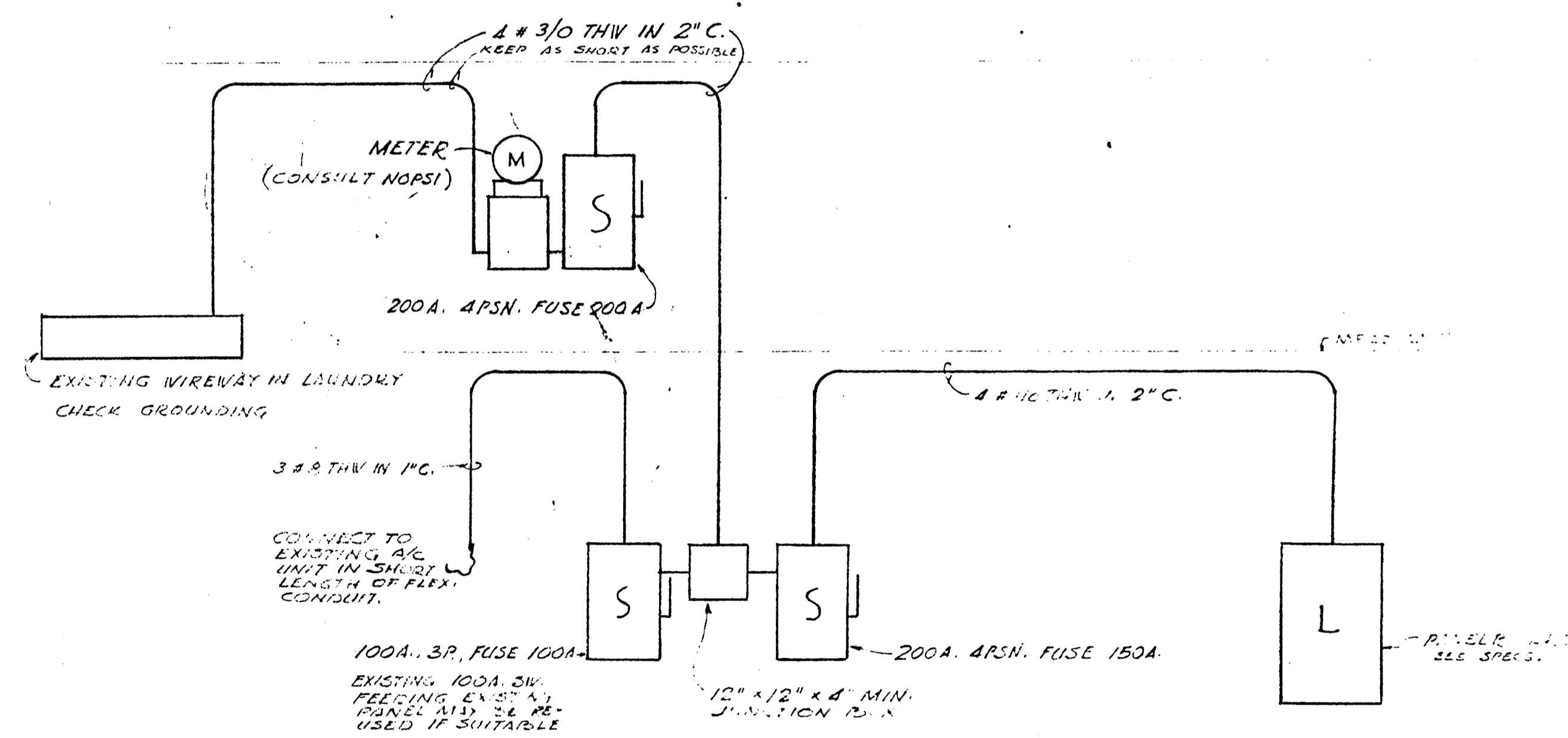


# ELECTRICAL SPECIFICATIONS

1. VISIT SITE BEFORE BIDDING NOTE ALL EXISTING CONDITIONS.
2. CONSULT POWER CO. ON SERVICE AND METERING. PAY ALL ASSESSMENTS.
3. OBTAIN ALL NECESSARY PERMITS AND CERTIFICATES OF INSPECTION PAY ALL FEES. DELIVER ALL CERTIFICATES TO ARCHITECT.
4. CONSULT TELEPHONE CO. ON THEIR REQUIREMENTS. MAKE PROVISIONS FOR THEIR INSTALLATION.
5. FOLLOW THE NATIONAL ELECTRICAL CODE, STATE AND LOCAL CODES. ALL MATERIALS SHALL HAVE UL LABEL.
6. INSTALL ALL WIRING IN CONDUIT.
7. USE ONLY COPPER CONDUCTORS, #12TH MINIMUM SIZE, STRANDED ABOVE #10.
8. REMOVE ALL EXISTING SERVICE & FEEDER CONDUITS AND METERS. REMOVE ALL EXISTING WIRING IN SALES AREA. REUSE EXISTING BRANCH CIRCUIT WIRING IN STOCK AREA, EXCEPT WHERE IT DOES NOT COMPLY WITH CODES. GROUND EXISTING CIRCUITS TO NEW PANEL, PROVIDE CIRCUIT BREAKERS OF THE PROPER RATING TO HANDLE EXISTING CIRCUITS. SERVICE AND METERING AS SHOWN ON DRAWINGS.
9. CONNECT ALL MOTORS AND MOTOR CONTROL DEVICES AND HEATERS FURNISHED BY MICH. SUB. FURNISH AND INSTALL FLEXIBLE LAMP MOTOR STARTERS (THERMAL TRIP SWITCHES). FURNISH AND INSTALL ALL NECESSARY SAFETY SWITCH DISCONNECTS AND FUSEBOX OR EQUIV. FUSES. ALL SAFETY SWITCHES HEAVY DUTY. MAKE FINAL CONNECTIONS TO MOTORS IN 1'-0" LENGTH (PREFERABLY 3" SPLICE) OF FLEX CONDUIT.
10. FOR TELEPHONES, RUN 3/4" CONDUIT FROM EACH OUTLET CONCEALED IN WALL TO EXIST. AND FINISHING ABOVE CLG. LEAD. PULL WIRE IN CONDUIT.
11. ALL FLUORESCENT BALLASTS SHALL BE HIGH P.F. EFL-C.B.M. APPROVED CLASS 'P', SHALL RATED A, ALL FLUORESCENT BALLASTS WITH 'E' TYPE.
12. WIRING DEVICES SHALL BE SPECIFICATION GRADE AS FOLLOWS:  
WALL SWITCHES - 20A., 277V. A.C., HUBBELL 1221 OR EQUAL.  
THERMAL-TRIP SWITCHES - ALLEN BRADLEY FORM 51 OR 52 AS APPLICABLE, # 600TOX4 OR 600TOX5 AS APPLICABLE OR EQUAL.  
RECEPTACLES - 15/20A., 125 V., DUPLEX, HUBBELL 5362 OR EQUAL.  
SPECIAL RECEPTACLE FOR CASH REGISTER: ISOLATED GROUND, FURNISHED BY TENANT. CONNECT ON CLEAN CKT. FOR DEVICE PLATES USE 302 NON MAGNETIC STAINLESS STEEL, HUBBELL 93000 SERIES OR EQUAL.  
MOUNT SWITCHES 50" UP OR AS DIRECTED  
MOUNT RECEPTACLES 18" UP OR AS DIRECTED
13. TIME SWITCHES - 2-POLE, 35A. PER POLE, ASTRONOMIC DIAL FOR 30° N. LATITUDE. TORK T200Z OR EQUAL SET TRIPPERS AS DIRECTED.
14. LIGHTING TRACK: 2-CIRCUIT, 20A., LIGHTOLIER LYTESPAN OR EQUAL WITH ALL NECESSARY JUNCTION BOXES, CLOSURES, CONNECTORS AND ACCESSORIES. FIXTURE F-3 MUST BE COMPATIBLE WITH TRACK FURNISHED.
15. PANELBOARD: C.B. TYPE, BOLTED BUSES & BREAKERS, PLATED BUSES, SURF. MTD., 120/208 V., 3-PHASE, 4-WIRE, 225 A. MAIN BUSES, M.L.O., MIN. C.B. I.C. 10000A., 27 1-POLE 20A BRANCHES INCLUDING 8 SPARES, ONE 2-POLE 40A. BR. (# 29) & ONE 3-POLE 70A. BR. (# 28). CONNECT EXISTING CKTS. IN OFFICE & STOCK RM TO SPARES. REMOVE EXISTING PNLs., TIME SWITCHES & ACCESSORIES.
16. SUBMIT PROPOSED SUBSTITUTIONS TO ARCHITECT IN WRITING AT LEAST 6 DAYS BEFORE BIDDING. SUBMIT ALL LIGHTING FIXTURES, WIRING DEVICES, TIME SWITCHES AND PANELBOARDS TO ARCHITECT FOR FINAL REVIEW BEFORE PURCHASING. 5 COPIES MIN. WILL BE REQUIRED.
17. LEAVE PREMISES CLEAN.
18. GUARANTEE NEW MATERIALS AND WORKMANSHIP FOR ONE YEAR AFTER FINAL ACCEPTANCE.



ONE-LINE FEEDER DIAGRAM

NO SCALE