

**THE SAENGER
THEATRE RENEWAL
PROJECT**

142 North Rampart Street
New Orleans, LA

Client
Saenger Theatre Redevelopment Company
200 West Loop South, Suite
1040 Houston TX 77027

Architect
**MARTINEZ+JOHNSON
ARCHITECTURE**

1412 Eye St., NW
Washington, DC 20005
202.333.4480

Structural Engineer
Shawn J. Franke, P.E.
549 Helmer Road San
Antonio TX 78232
210.979.7900

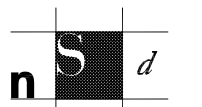
Theatre Consultant
Schuler Shook
123 Third Street North #210
Minneapolis, MN 55401
612.338.9989

Acoustical Engineer
Akustiks
93 North Main Street South
Norwalk, CT 06854
202.299.1904

MEP Engineer
JBA Consulting Engineers, Inc.
3525 N. Causeway Blvd., Suite
500 Metairie, LA 70002
504.830.0139

Civil Engineer
Linfield, Hunter, & Junius, Inc.
3608 18th Street Suite 200
Metairie, LA 70002
504.835.8300

Architectural Historian
EHT Traceries, Inc.
1121 Fifth Street NW
Washington, DC 20001
202.393.1199



Next Step Design
FOODSERVICE CONSULTANTS
1116 West Street, Suite C
Annapolis, MD 21401
410.263.1200

THESE DRAWINGS, SPECIFICATIONS AND OTHER DOCUMENTS (COLLECTIVELY, "THE DOCUMENTS") INCLUDING WITHOUT LIMITATION ELECTRONIC VERSIONS THEREOF AND THE IDEAS, DESIGNS AND ARRANGEMENTS REPRESENTED THEREBY ARE AND SHALL REMAIN THE PROPERTY OF MARTINEZ & JOHNSON ARCHITECTURE, P.C. AS DEFINED BY APPLICABLE CONTRACTUAL AGREEMENTS ("THE AGREEMENTS") AND AS PROTECTED BY THE COPYRIGHT STATUTES OF THE UNITED STATES. USE OF THE DOCUMENTS SHALL BE STRICTLY LIMITED TO THE PROJECT FOR WHICH THEY WERE PREPARED AND DEVELOPED ("THE PROJECT") PER THE TERMS OF THE AGREEMENTS. NO PART OF THE DOCUMENTS SHALL BE COPIED, DISCLOSED TO OTHERS, OR USED IN CONNECTION WITH ANY OTHER WORK OR PROJECT, OR BY ANY OTHER PERSONS FOR ANY PURPOSES, OTHER THAN THE COMPLETION OF THE PROJECT, WITHOUT THE SPECIFIC WRITTEN AUTHORIZATION OF MARTINEZ & JOHNSON ARCHITECTURE, P.C. THE DOWNLOADING, OPENING, OR VIEWING OF ELECTRONIC VERSIONS OF THE DOCUMENTS OR VISUAL CONTACT WITH ANY PRINTED FORM THEREOF SHALL CONSTITUTE CONCLUSIVE EVIDENCE OF ACCEPTANCE OF THESE RESTRICTIONS.

7502

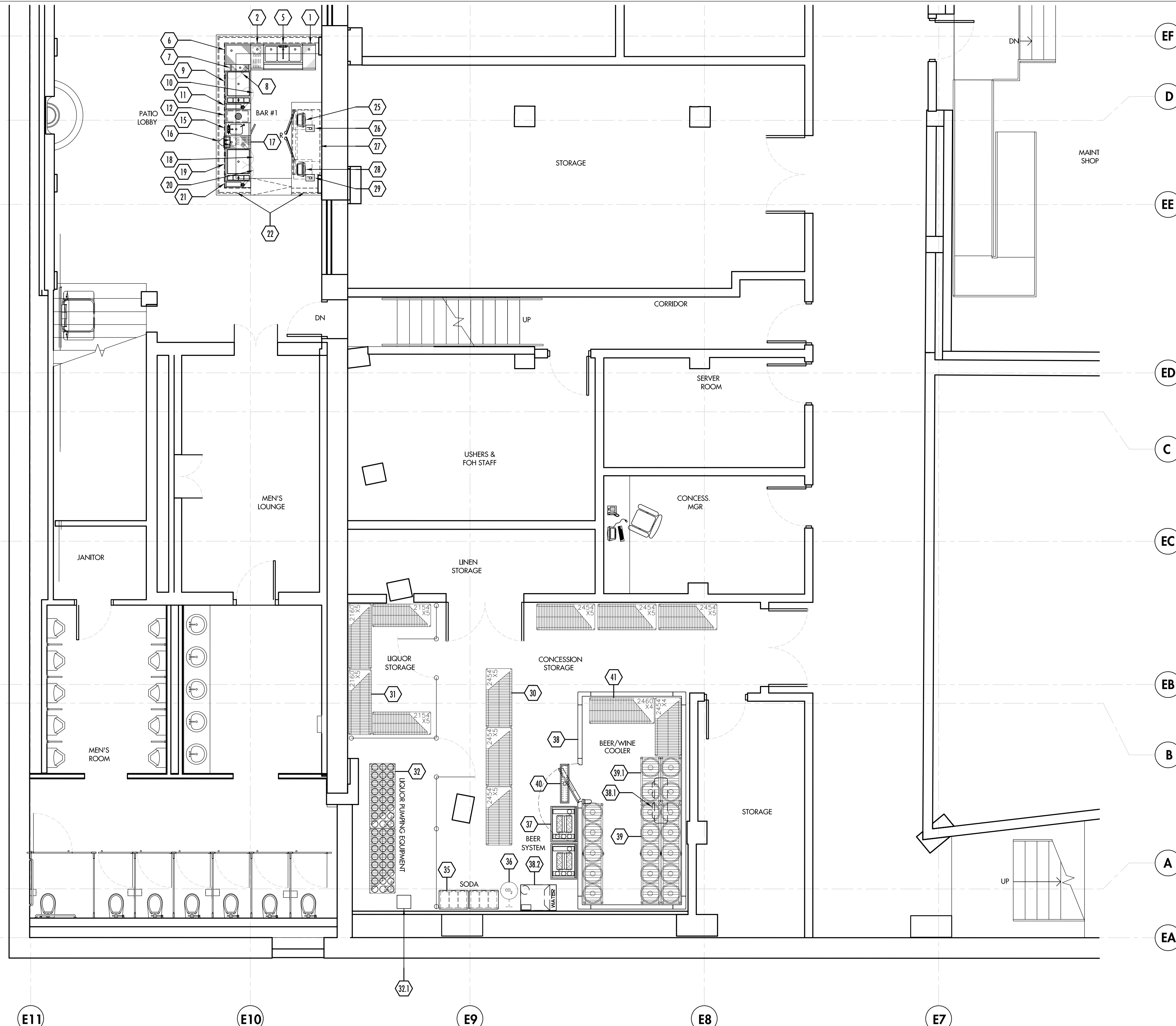
DATE: No.: ISSUE:

| | | |
|----------|---|------------------|
| 02.19.10 | 1 | PERMIT SET |
| 04.02.10 | 2 | GMP CONTRACT SET |
| 11.11.10 | - | CONTRACT SET |

DATE: No.: REVISION:

SHEET TITLE:
FOODSERVICE -
BASEMENT EQUIPMENT
PLAN

FS-1



G.C. NOTES

- GENERAL CONTRACTOR TO COORDINATE W/ K.E.C. ON ALL MILLWORK, CRITICAL DIMENSIONS, DELIVERY OF EQUIPMENT & TIME SCHEDULE.
- GENERAL CONTRACTOR WILL REINFORCE ALL WALLS BEHIND WALL-MOUNTED EQUIPMENT. (SEE SPECIAL CONDITIONS PLAN)
- PLUMBER WILL COMPLETELY INSTALL ALL HAND SINKS, FLOOR TROUGHS, DISPOSERS, & FAUCETS (AS PROVIDED BY THE KEC).
- REFER TO ARCHITECTURAL DRAWINGS FOR FINISH SCHEDULE AND MILLWORK DETAILS.
- ALL ROUGH-INS AND FINAL CONNECTIONS WILL BE DONE BY GENERAL CONTRACTOR, EXCEPT WHERE NOTED.
- GENERAL CONTRACTOR TO PREVIEW SPECIAL CONDITIONS PLAN (FS-SC) FOR ADDITIONAL G.C RELATED SCOPE OF WORK SUCH AS, BEER/SODA CONDUITS, WALL BACKINGS, SLAB WORK & MILLWORK CUT-OUTS.
- GENERAL CONTRACTOR TO READ ALL NOTES AND REVIEW ALL FOODSERVICE PLANS FOR COMPLETE SCOPE OF WORK.

K.E.C. NOTES

- REFER TO ARCHITECTURAL DRAWINGS FOR FINISH SCHEDULE AND MILLWORK DETAILS.
- FOOD SERVICE EQUIPMENT WILL BE SUPPLIED BY THE OWNER'S KITCHEN EQUIPMENT CONTRACTOR (K.E.C.), EXCEPT AS NOTED.
- THE OWNER'S KITCHEN EQUIPMENT CONTRACTOR (K.E.C.) WILL BE RESPONSIBLE FOR THE RECEIVING, STORAGE, DELIVERY TO SITE, UN-CRATING, ASSEMBLY, SETTING IN PLACE, LEVELING, AND SEALING OF ALL EQUIPMENT THAT THEY SUPPLY.
- ALL ROUGH-INS AND FINAL CONNECTIONS BY GENERAL CONTRACTOR, EXCEPT WHERE NOTED.
- K.E.C. TO ASSIST IN FIELD VERIFICATION OF ALL ROUGH-INS AND CRITICAL DIMENSIONS.
- K.E.C. TO HANG & INSTALL ALL WALL MOUNTED SHELVING. USE STAINLESS STEEL TRUSS HEAD HARDWARE ONLY.
- K.E.C. TO PROVIDE MINIMUM 1 YEAR PARTS AND SERVICE WARRANTY FOR REFRIGERATION, COOKING, AND MECHANICAL EQUIPMENT.
- K.E.C. TO HANG EXHAUST HOODS ONLY, AND PROVIDE ANY PERMITS REQUIRED.
- K.E.C. TO PROVIDE FULLY OPERATIONAL FIRE SYSTEM AND OBTAIN ALL APPROVALS.
- K.E.C. TO PROVIDE FINAL START-UP OF ALL REFRIGERATION, RUN REQUIRED REFRIGERANT LINES AND HANG COILS.
- K.E.C. REFRIGERATION CONTRACTOR IS RESPONSIBLE FOR ALL PERMITS RELATED TO WALK-IN COOLERS & REFRIGERATION SYSTEMS AS REQUIRED BY LOCAL JURISDICTION.
- K.E.C. TO PROVIDE ALL GAS PRESSURE REGULATORS FOR EQUIPMENT REQUIRED BY MANUFACTURER. COORDINATE ALL INSTALLATIONS W/ PLUMBING CONTRACTOR AS PER LOCAL CODES.
- K.E.C. - FOR COMPLETE SPECIFICATIONS AND MODEL NUMBERS, THESE PLANS MUST BE BID WITH FOOD SERVICE SPECIFICATIONS BOOK.

COPYRIGHT
UNAUTHORIZED USE OF THE FOODSERVICE DESIGNS, DETAILS, AutoCAD® BLOCKS, AND SPECIFICATIONS CONTAINED IN THESE DOCUMENTS IS STRICTLY PROHIBITED. NSD, INC. MAINTAINS OWNERSHIP OF SAME. THIS PROHIBITION EXTENDS FROM PRINTED MATERIAL TO ANY ELECTRONIC VERSION OF THE SAME. NO USE, OTHER THAN THAT FOR WHICH IT IS INTENDED, IS STRICTLY PROHIBITED WITHOUT WRITTEN PERMISSION FROM NEXT STEP DESIGN, INC. ALL RIGHTS RESERVED.

BASEMENT EQUIPMENT PLAN

SCALE 1/4" = 1'-0"

FOODSERVICE - BASEMENT EQUIPMENT PLAN

1/4" = 1'-0"

1