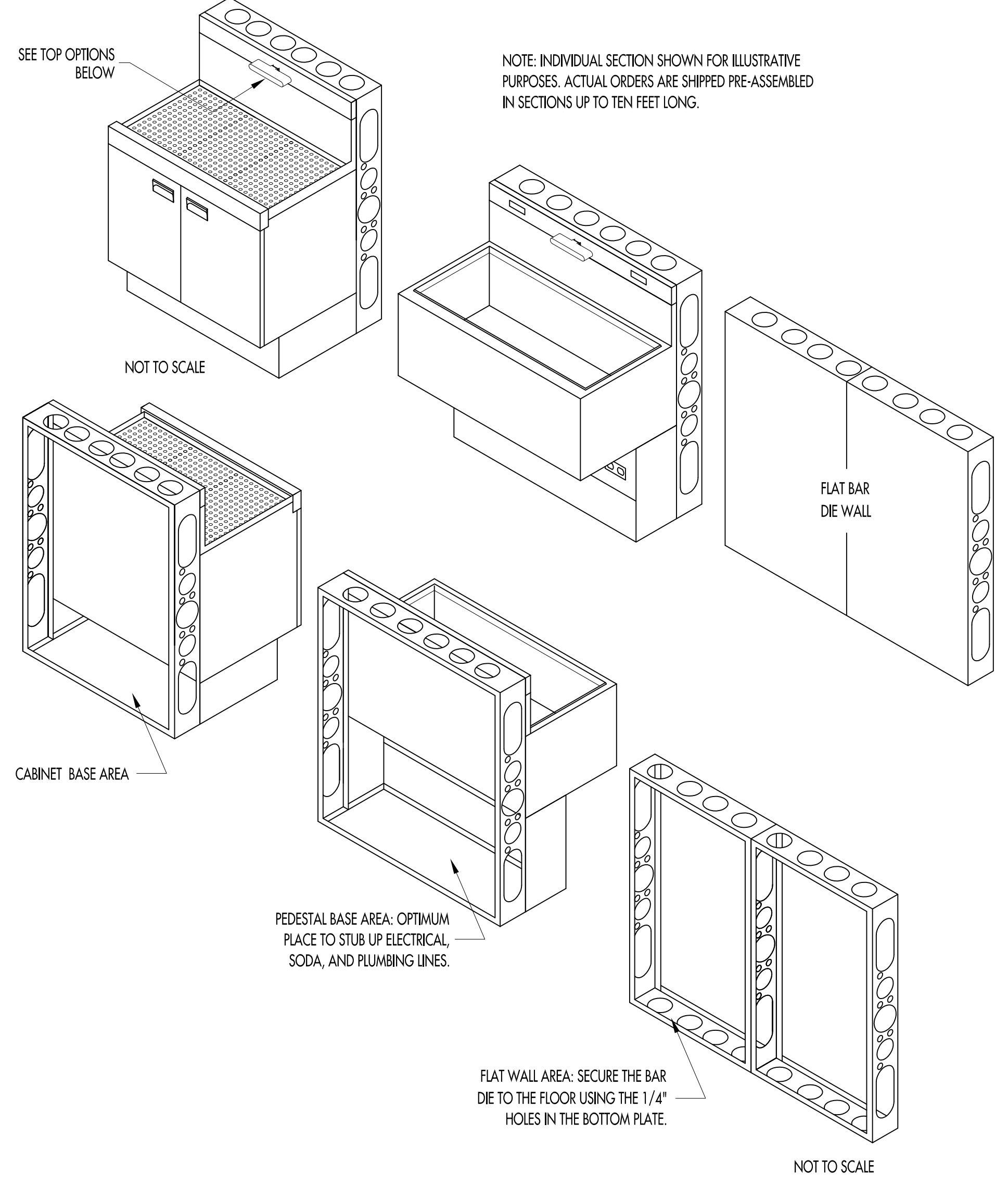
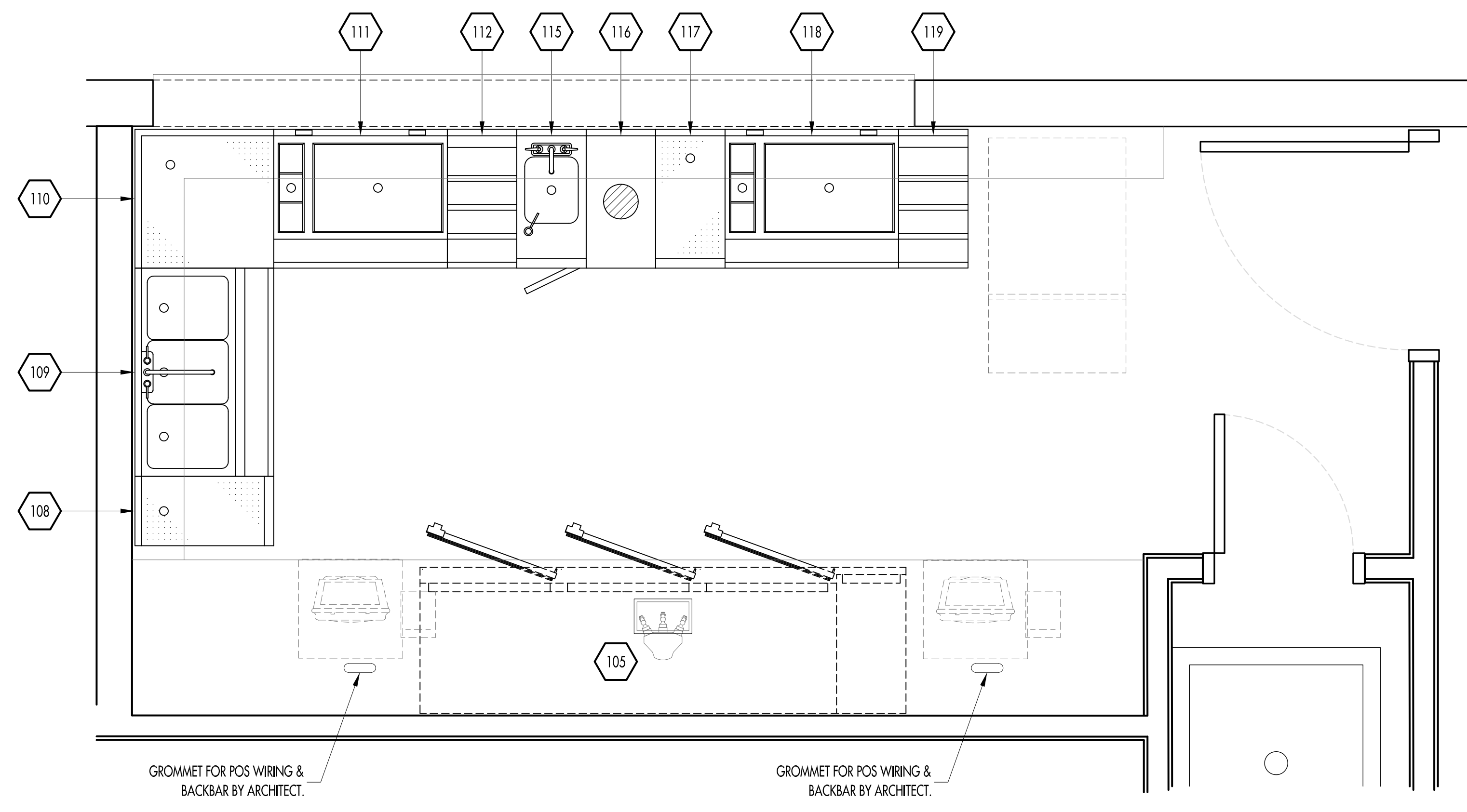


EQUIPMENT SCHEDULE			
Item No	Qty	Model Number	Equipment Remarks
105	1	8884-L1-SSH(LLL)	MODIFIED TO ACCEPT TWO (2) KEGS BEHIND RIGHT DOORS
108	1	D8CB-12-LD	
109	1	TSA-36-S	(1) SSR-36
110	1	IFC-24/24	
111	1	CBA-30L3	(1) SSR-30 (1) SSR-30 ** NO COLD PLATE **
112	1	LDA-12S	
115	1	DHSB-12	(1) TR (1) 03000483 STRAINER ** RIGHT DOOR **
116	1	DWB-12	(1) 03000497
117	1	D8CB-12-LD	
118	1	CBA-30L3	(1) SSR-30 (1) SSR-30 ** NO COLD PLATE **
119	1	LDA-12S	



**NOTES**

DUPLEX OUTLETS ARE POSITIONED 12" A.F.F. TO THE CENTER OF THE OUTLET. IT IS THE CUSTOMER'S RESPONSIBILITY TO VERIFY THE HEIGHT, SIZE, AND LOCATION OF ANY AND ALL DUPLEX OUTLETS PRIOR TO FABRICATION, MAKING SURE THEY MEET LOCAL BUILDING AND ELECTRICAL CODES. GLASTENDER MUST BE NOTIFIED OF ANY DEVIATIONS FROM STANDARD. GLASTENDER IS NOT RESPONSIBLE FOR ANY MODIFICATIONS REQUIRED IN THE FIELD.

THERE ARE THREE TYPES OF MODULAR BAR DIE: FLAT WALL, PEDESTAL BASE, AND CABINET BASE. ROUGH-IN SPACE VARIES WITH THE TYPE OF BASE. FLAT WALL SECTIONS OCCUR WHERE THERE IS NO EQUIPMENT OR WHERE THE EQUIPMENT IS REMOVABLE (GLASSWASHERS, COOLERS, MUG FROSTERS, ETC.). PEDESTAL BASES ARE THE MOST COMMON SINCE THEY ARE USED FOR STANDARD UNDERBAR THAT IS NORMALLY ON 16" LEGS. CABINET STYLE UNDERBAR EQUIPMENT, TYPICALLY ON 7" LEGS, WILL RECEIVE A CABINET STYLE BASE.

MODULAR BAR DIE ORDERS INCLUDE AN INSTALLATION "FOOT PRINT" WHICH SHOWS THE DIMENSIONS OF THE BAR DIE AS IT TOUCHES THE FLOOR. THE FOOT PRINT DRAWING IS USED AS A REFERENCE IN THE FIELD FOR PLACEMENT OF SODA, BEER, PLUMBING, AND ELECTRICAL ROUGH-INS PRIOR TO DELIVERY OF THE EQUIPMENT.

**CONFIGURATION**

NL = NO LEGS  
 NS = NO SIDE  
 CS = CUP SIDE  
 HS = HALF SIDE  
 FS = FULL SIDE  
 TE = TALL END  
 AS = AS SIDE  
 AD = AD SIDE  
 BN = B SIDE  
 BS = BS SIDE

**ELECTRICAL LEGEND**

DL = DUPLEX RECEPTICLE, 16" AFF  
 DH = DUPLEX RECEPTICLE, 39" AFF & HORIZONTAL  
 L = TASK LIGHTS

## ORCHESTRA LEVEL BAR/CONSSIONS BAR EQUIPMENT DETAILS

SCALE 3/4" = 1'-0"

**Glas tender**  
 GLASTENDER, INC.  
 5400 NORTH MICHIGAN  
 SAGINAW, MI 48604-9780  
 PH 989.752.4275  
 FAX 989.752.4444

Project Name: SAENGER THEATRE  
 Drawn By: D. HOTZ  
 Drawing Number: B10464500

**COPYRIGHT**  
 UNAUTHORIZED USE OF THE FOODSERVICE DESIGNS, DETAILS, AutoCAD® BLOCKS, AND SPECIFICATIONS CONTAINED IN THESE DOCUMENTS IS STRICTLY PROHIBITED. NSD, INC. MAINTAINS OWNERSHIP OF SAME. THIS PROHIBITION EXTENDS FROM PRINTED MATERIAL TO ANY ELECTRONIC VERSION OF THE SAME. NO USE, OTHER THAN THAT FOR WHICH IT IS INTENDED, IS STRICTLY PROHIBITED WITHOUT WRITTEN PERMISSION FROM NEXT STEP DESIGN, INC. ALL RIGHTS RESERVED.



## THE SAENGER THEATRE RENEWAL PROJECT

142 North Rampart Street  
 New Orleans, LA

Client  
 Saenger Theatre Redevelopment Company  
 200 West Loop South, Suite  
 1040 Houston TX 77027

Architect  
**MARTINEZ+JOHNSON**  
 ARCHITECTURE  
 1412 Eye St., NW  
 Washington, DC 20005  
 202.333.4480

Structural Engineer  
 Shawn J. Franke, P.E.  
 549 Helmer Road San  
 Antonio TX 78232  
 210.979.7900

Theatre Consultant  
 Schuler Shook  
 123 Third Street North #210  
 Minneapolis, MN 55401  
 612.338.9998

Acoustical Engineer  
 Akustiks  
 93 North Main Street South  
 Norwalk, CT 06854  
 202.299.1904

MEP Engineer  
 JBA Consulting Engineers, Inc.  
 3525 N. Causeway Blvd., Suite  
 500 Metairie, LA 70002  
 504.830.0139

Civil Engineer  
 Linfield, Hunter, & Junius, Inc.  
 3608 18th Street Suite 200  
 Metairie, LA 70002  
 504.833.8300

Architectural Historian  
 EHT Traceries, Inc.  
 1121 Fifth Street NW  
 Washington, DC 20001  
 202.393.1199

**Next Step Design**  
 FOODSERVICE CONSULTANTS  
 1118 West Street, Suite C  
 Annapolis, MD 21401  
 410.263.1200

THESE DRAWINGS, SPECIFICATIONS AND OTHER DOCUMENTS (COLLECTIVELY, THE "DOCUMENTS") INCLUDING WITHOUT LIMITATION ELECTRONIC VERSIONS THEREOF AND THE IDEAS, DESIGNS AND ARRANGEMENTS REPRESENTED THEREBY, ARE AND SHALL REMAIN THE PROPERTY OF MARTINEZ & JOHNSON ARCHITECTURE P.C. AS DEFINED BY APPLICABLE CONTRACTUAL AGREEMENTS ("THE AGREEMENTS") AND AS PROTECTED BY THE COPYRIGHT STATUTES OF THE UNITED STATES. USE OF THE DOCUMENTS SHALL BE STRICTLY LIMITED TO THE PROJECT FOR WHICH THEY WERE PREPARED AND DEVELOPED ("THE PROJECT") PER THE TERMS OF THE AGREEMENTS. NO PART OF THE DOCUMENTS SHALL BE COPIED, DISCLOSED TO OTHERS, OR USED IN CONNECTION WITH ANY OTHER WORK OR PROJECT, OR BY ANY OTHER PERSONS FOR ANY PURPOSES, OTHER THAN THE COMPLETION OF THE PROJECT, WITHOUT THE SPECIFIC WRITTEN AUTHORIZATION OF MARTINEZ & JOHNSON ARCHITECTURE P.C. THE DOWNLOADING, OPENING, OR VIEWING OF ELECTRONIC VERSIONS OF THE DOCUMENTS OR VISUAL CONTACT WITH ANY PRINTED FORM THEREOF SHALL CONSTITUTE CONCLUSIVE EVIDENCE OF ACCEPTANCE OF THESE RESTRICTIONS.

7502

DATE:	No.:	ISSUE:
02.19.10	1	PERMIT SET
04.02.10	2	GMP CONTRACT SET
11.11.10	-	CONTRACT SET

DATE:	No.:	REVISION:

SHEET TITLE:  
**FOODSERVICE BAR EQUIPMENT DETAILS**

## FS-BAR2